

## **Electronic Supporting Information**

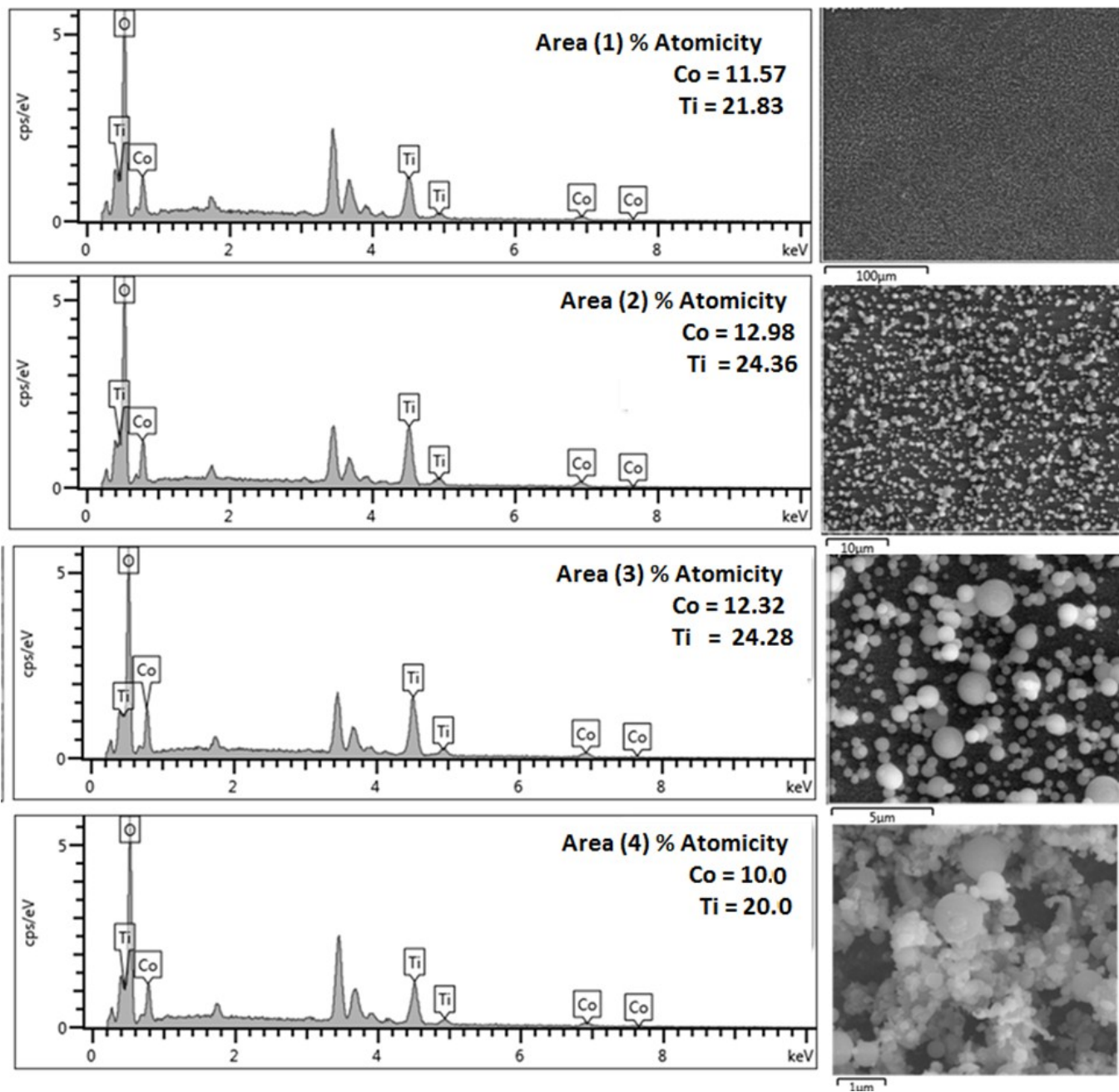
### **Fabrication of CoTiO<sub>3</sub>-TiO<sub>2</sub> composite Films from Heterobimetallic Single Source Precursor for Electrochemical Sensing of Dopamine**

Muhammad Ali Ehsan, Rabia Naeem, Hamid Khaledi, Manzar Sohail, Abbas Hakeem Saeed,  
Muhammad Mazhar

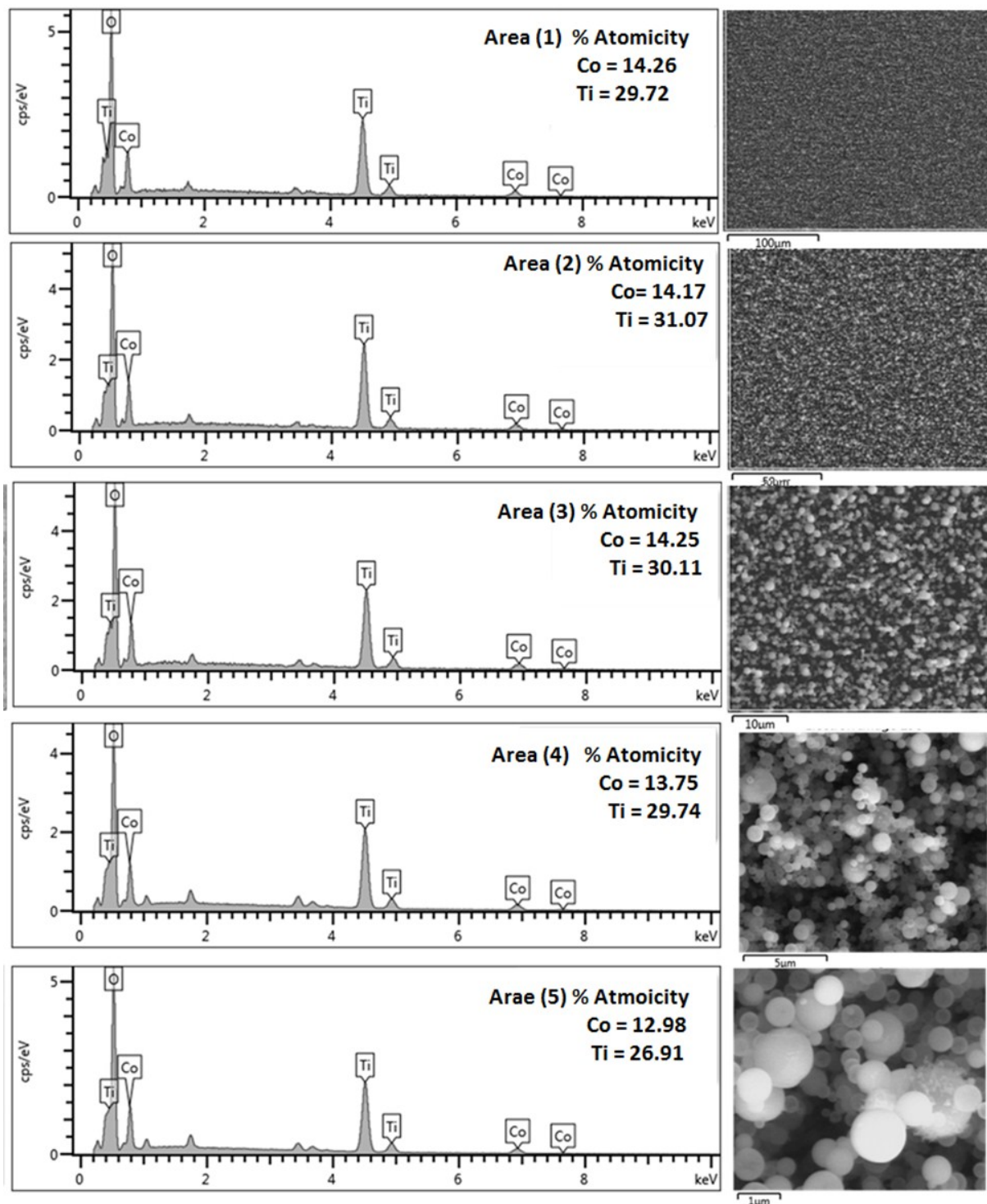
#### **List of Information**

#### **Page No.**

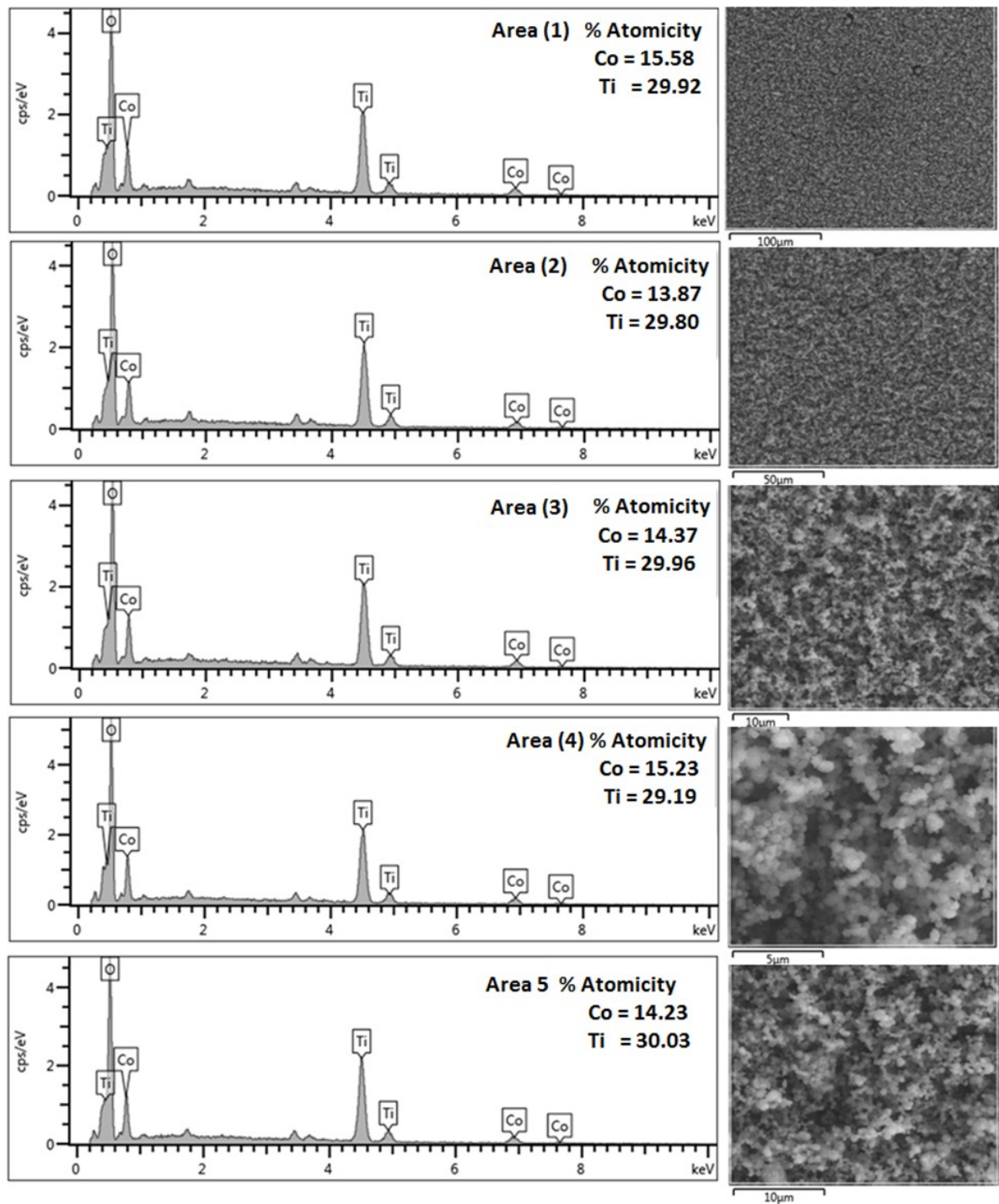
- |  |     |
|--|-----|
| 1. EDX spectra of CoTiO <sub>3</sub> -TiO <sub>2</sub> composite films | 2-4 |
| 2. EDX Elemental map   | 5-6 |
| 3. CV plot   | 7   |



**SI Figure 1a:** EDX spectra recorded from different areas of  $\text{CoTiO}_3\text{-TiO}_2$  composite oxide film deposited from precursor (1) at 500 °C.

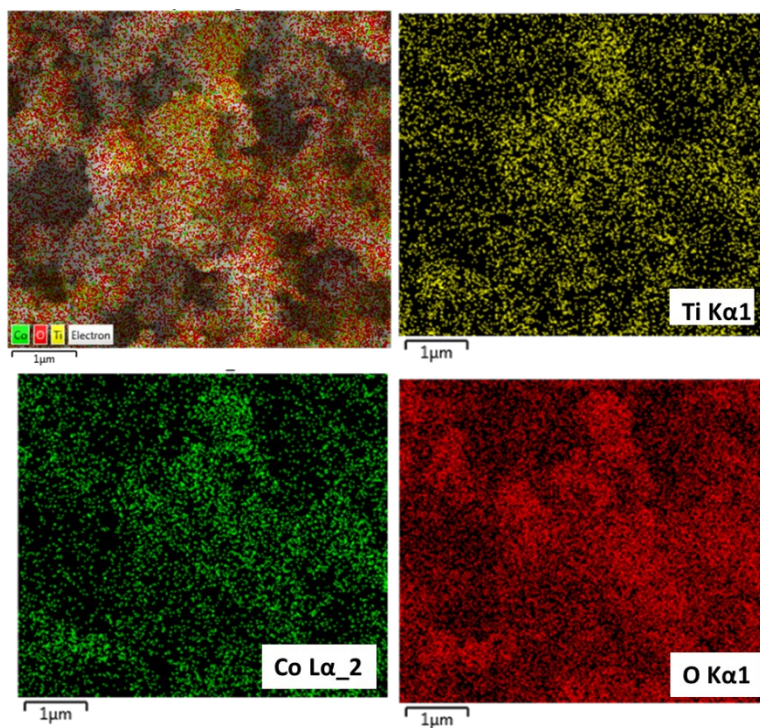


**SI Figure 1b:** EDX spectra recorded from different areas of  $\text{CoTiO}_3\text{-TiO}_2$  composite oxide film deposited from precursor (1) at 550 °C.

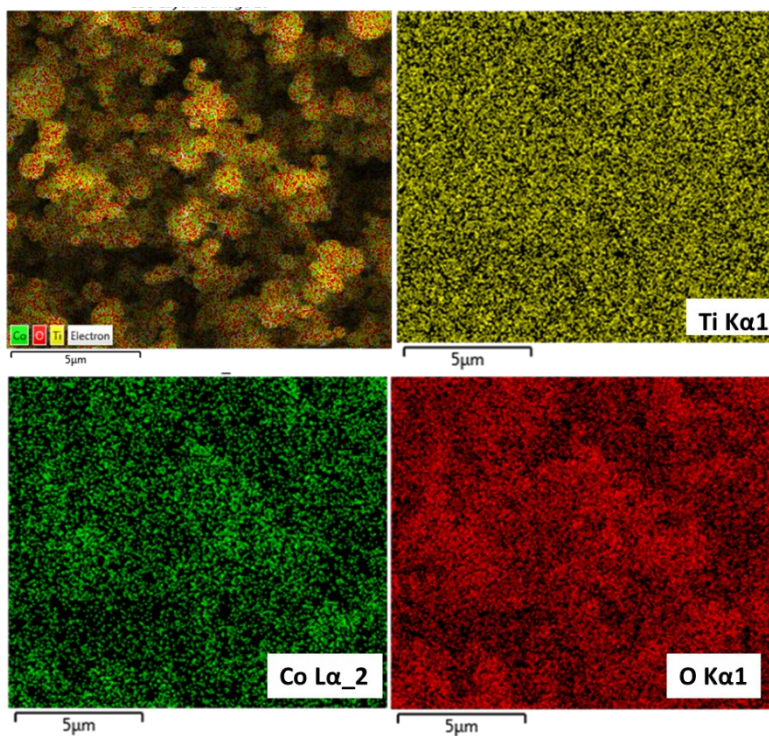


**SI Figure 1c:** EDX spectra recorded from different areas of  $\text{CoTiO}_3\text{-TiO}_2$  composite oxide film deposited from precursor (1) at 600 °C.

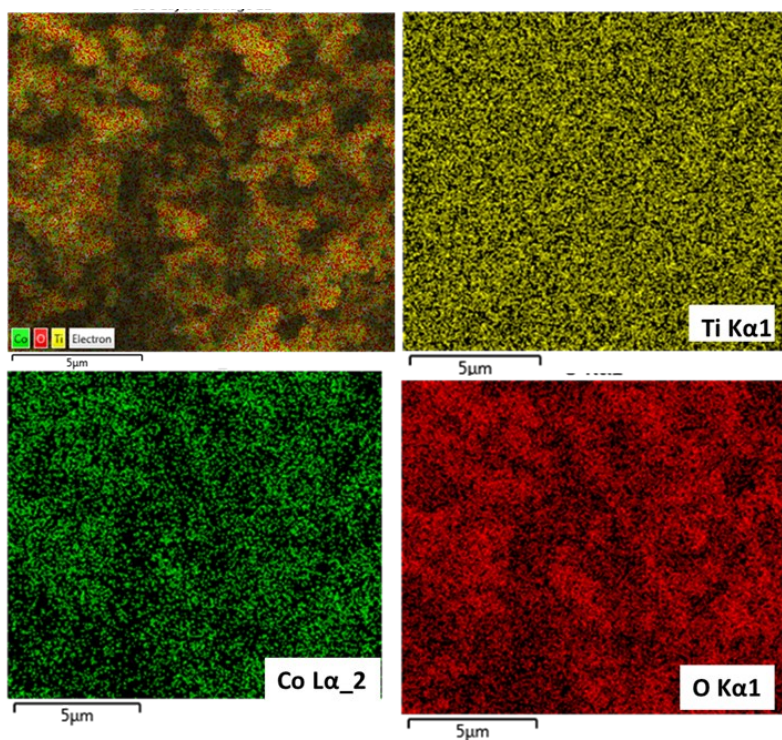




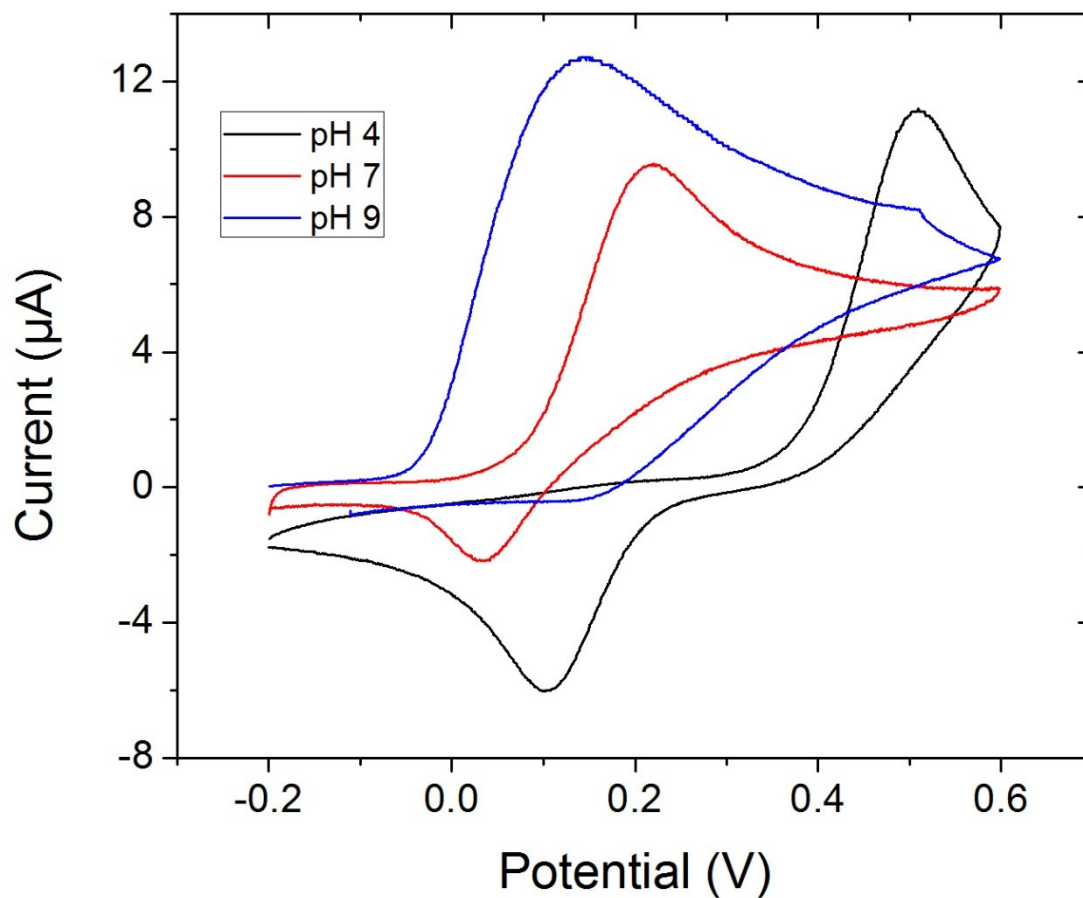
**SI. Figure 2a:** EDX Elemental map showing the distribution of Co, Ti and O atoms in  $\text{CoTiO}_3\text{-TiO}_2$  composite film deposited from precursor (1) at 500 °C



**SI. Figure 2b:** EDX Elemental map showing the distribution of Co, Ti and O atoms in  $\text{CoTiO}_3\text{-TiO}_2$  composite film deposited from precursor (1) at 550 °C



**SI. Figure 2c:** EDX Elemental map showing the distribution of Co, Ti and O atoms in CoTiO<sub>3</sub>-TiO<sub>2</sub> composite thin film deposited from precursor (1) at 600 °C.



**SI. Figure 3:** Cyclic voltammograms recorded for the  $\text{CoTiO}_3\text{-TiO}_2$  electrode at different pHs in the presence of  $10 \mu\text{M}$  DA in  $0.1 \text{ M}$  PBS.