

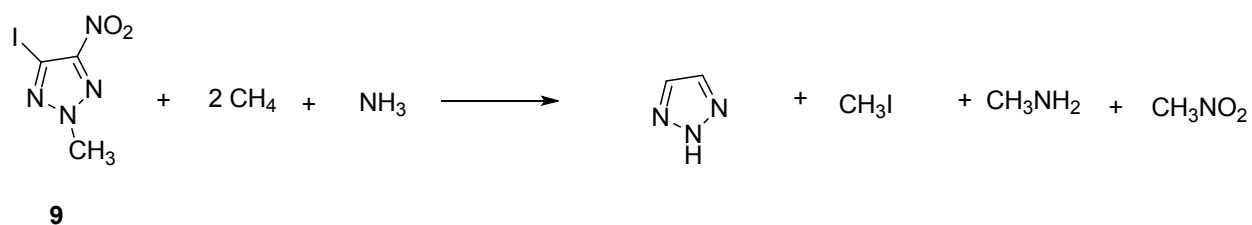
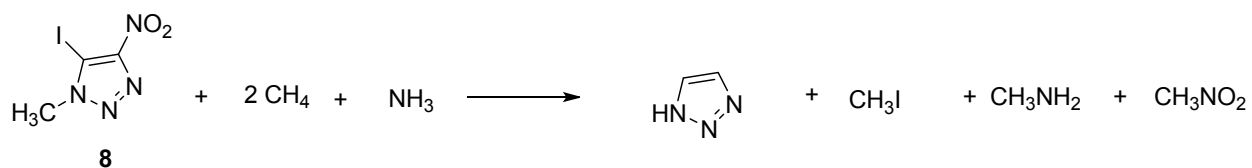
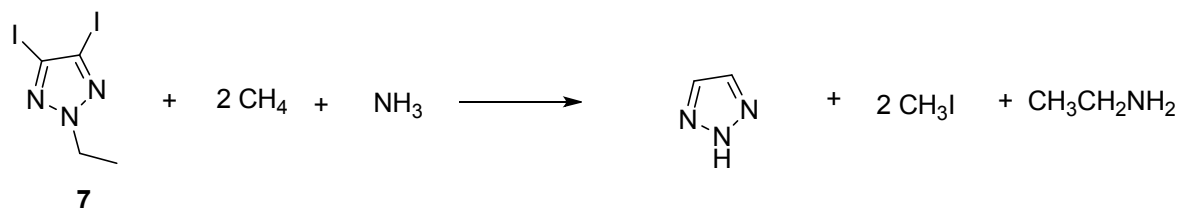
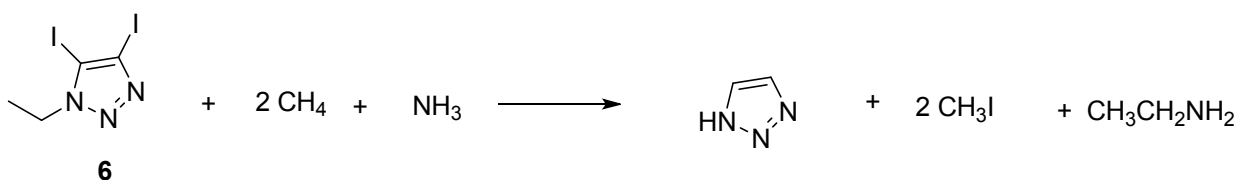
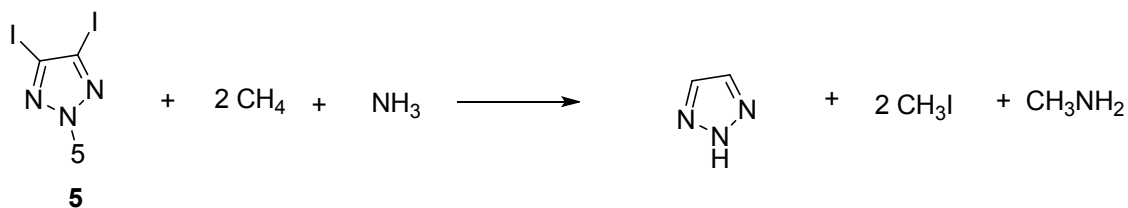
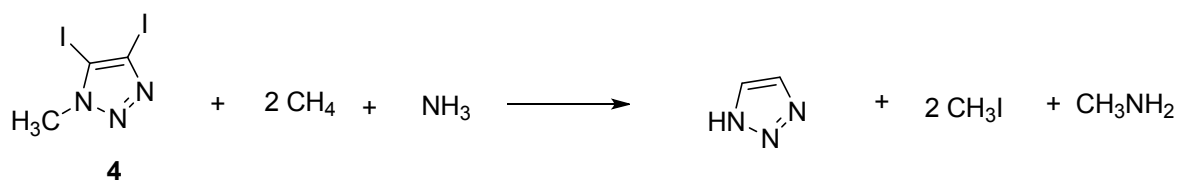
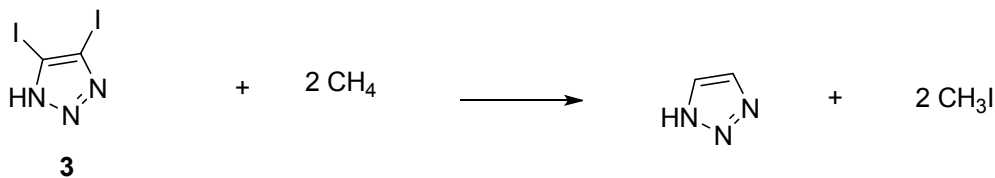
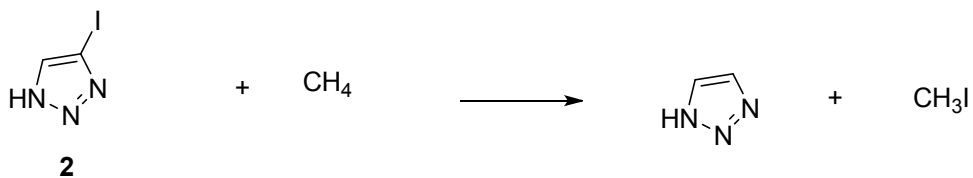
Electronic Supplementary Information

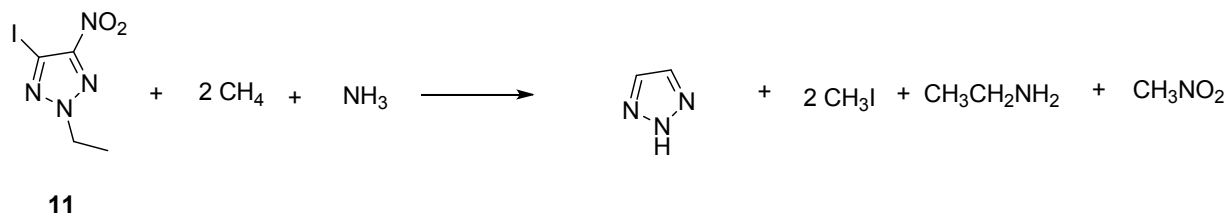
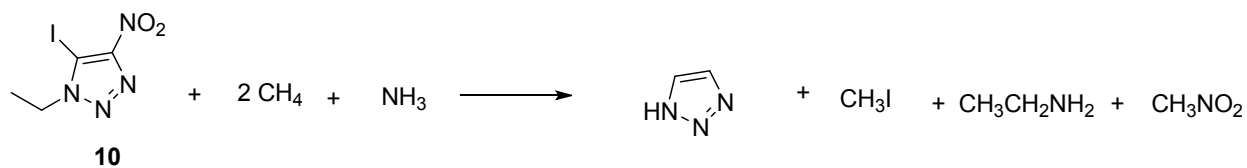
Mono- and Diiodo-1,2,3-Triazoles and Their Mono Nitro Derivatives

Deepak Chand, Chunlin He, James P. Hooper, Lauren A. Mitchell, Damon A. Parrish, and Jean'ne M. Shreeve*

Table of Contents:

Content	Page
Isodesmic reactions	S2
Table S1 – Crystallographic Data	S3
Spectral data of 2 – 11	S5





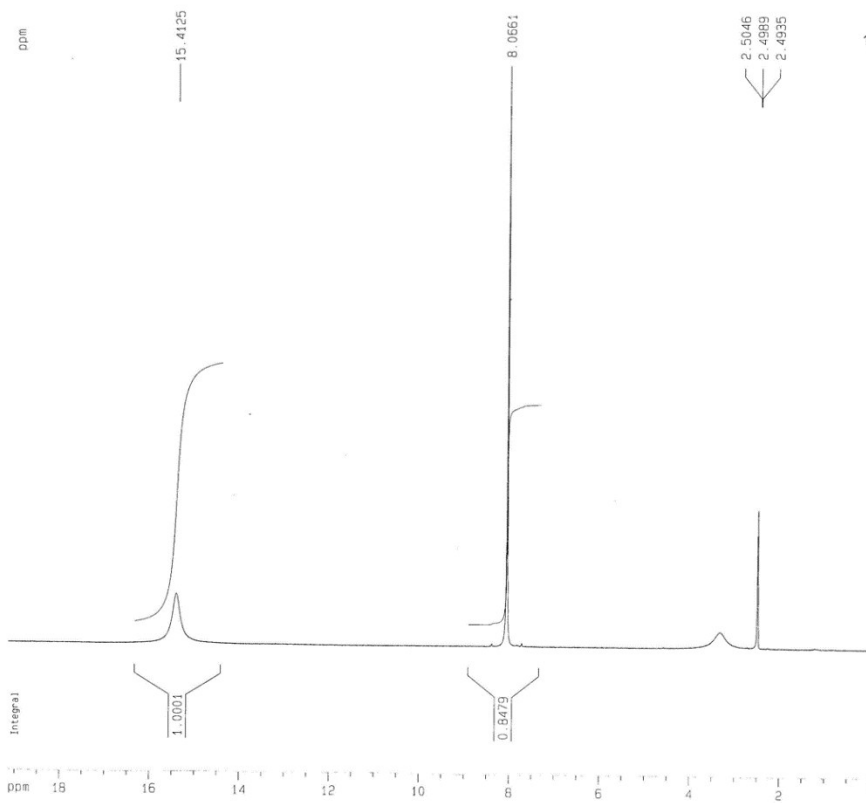
Scheme S1: Isodesmic reactions

Table S1: Crystallographic data for compounds 5, 6, 8 and 10.

Compound	5	6	8	10
Formula	C ₃ H ₃ I ₂ N ₃	C ₄ H ₅ I ₂ N ₃	C ₃ H ₃ IN ₄ O ₂	C ₄ H ₅ IN ₄ O ₂
CCDC number	1446302	1446304	1446331	1446333
<i>M_w</i>	334.88	348.91	253.99	268.02
Crystal size [mm ³]	0.399 x 0.206 x 0.018	0.316 x 0.115 x 0.104	0.223 x 0.150 x 0.037	0.174 x 0.077 x 0.014
Crystal system	Orthorhombic	Triclinic	Triclinic	Triclinic
Space group	Pmn2 ₁	P-1	P-1	P-1
<i>a</i> [Å]	11.4559(8)	7.274(3)	7.0649(12)	6.9327(11)
<i>b</i> [Å]	4.1982(3)	7.508(3)	7.2001(12)	7.2485(11)
<i>c</i> [Å]	7.7048(5)	7.980(3)	70.362(5)	8.5638(12)
<i>α</i> [°]	90	84.239(4)	64.462(5)	77.511(5)
<i>β</i> [°]	90	83.370(5)	64.462(5)	67.263(4)°
<i>γ</i> [°]	90	68.174(4)	86.027(5)	83.499(5)°
<i>V</i> [Å ³]	370.56(4)	401.1(3)	339.95(10)	387.30(10)
<i>Z</i>	2	2	2	2

T [K]	150(2)	150(2)	150(2)	150(2)
ρ_{calcd} [Mg m ⁻³]	3.001	2.889	2.481	2.298
μ [mm ⁻¹]	8.396	7.763	4.654	4.091
$F(000)$	296	312	236	252
θ [°]	3.186 to 27.485	2.928 to 30.405	3.016 to 25.507	2.626 to 30.413
Index ranges	-14<= h <=14	-9<= h <=10	-8<= h <=8	-9<= h <=9
	-5<= k <=5	-10<= k <=10	-8<= k <=8	-9<= k <=10
	-9<= l <=10	-0<= l <=11	-9<= l <=9	-12<= l <=12
Reflections collected	3581	2117	2656	4209
Independent reflections (R_{int})	838 [$R_{\text{int}} = 0.0397$]	2117	1247 [$R_{\text{int}} = 0.0342$]	2103 [$R_{\text{int}} = 0.0276$]
Data/restraints/parameters	838 / 1 / 41	2117 / 0 / 84	1247 / 0 / 92	2103 / 0 / 101
GOF on F^2	1.088	1.165	1.065	1.049
R_1 ($I > 2\delta(I)$) ^a	0.0186	0.0308	0.0312	0.0283
wR_2 ($I > 2\delta(I)$) ^b	0.0452	0.0808	0.0762	0.0648
R_1 (all data)	0.0187	0.0344	0.0341	0.0351
wR_2 (all data)	0.0453	0.0831	0.0788	0.0675
Largest diff. peak and hole [e. Å ⁻³]	0.816 and -0.716	1.489 and -1.117	1.083 and -1.189	1.243 and -1.382

$$^a R_1 = \sum ||F_0| - |F_c|| / \sum |F_0| \quad ^b R_2 = [\sum w(F_0^2 - F_c^2)^2 / \sum w(F_0^2)^2]^{1/2}$$



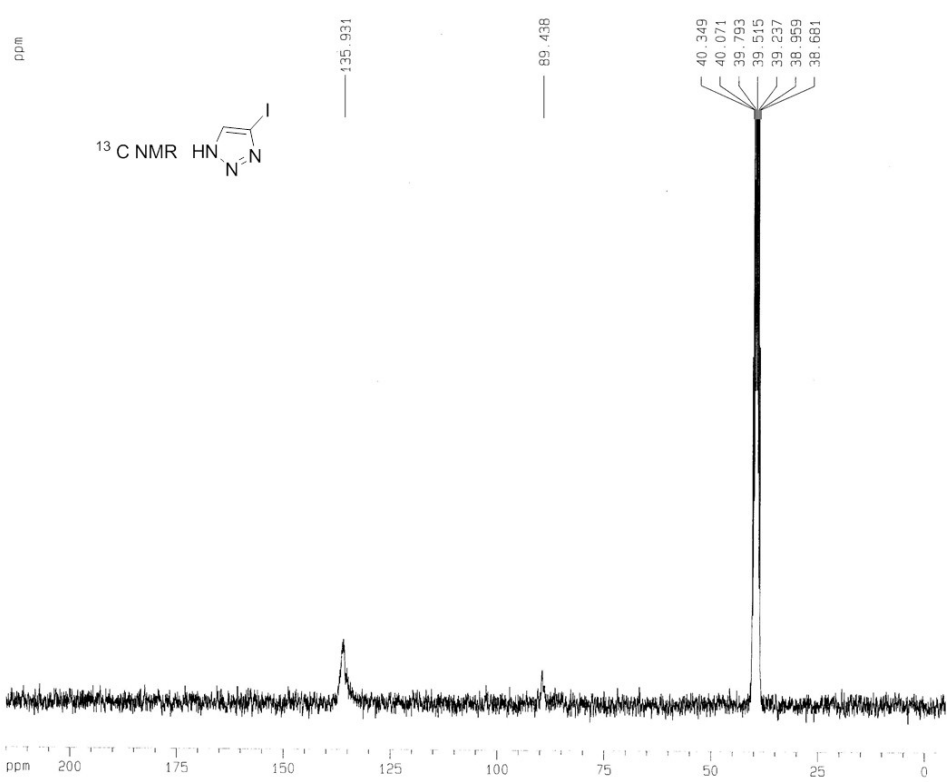
Current Data Parameters
 NAME dpkqnp1H
 EXPNO 1755
 PROCNO 1

F2 - Acquisition Parameters
 Date_ 20150829
 Time 10.03
 INSTRUM spect
 PROBHD 5 mm QNP 1H/13
 PULPROG zg
 TD 32768
 SOLVENT Acetone
 NS 8
 DS 0
 SWH 7267.442 Hz
 FIDRES 0.221785 Hz
 AQ 2.2544885 sec
 RG 512
 DW 68.800 usec
 DE 6.00 usec
 TE 300.0 K
 D1 1.0000000 sec

***** CHANNEL f1 *****
 NUC1 1H
 P1 3.00 usec
 PL1 -4.00 dB
 SF01 300.1323664 MHz

F2 - Processing parameters
 SI 32768
 SF 300.1300028 MHz
 WDW EM
 SSB 0
 LB 0.30 Hz
 GB 0
 PC 1.00

ID NMR plot parameters
 CX 20.00 cm
 CY 12.50 cm
 F1P 19.143 ppm
 F1 9745.42 Hz
 F2P -0.067 ppm
 F2 -20.02 Hz
 PPMCM 0.96049 ppm/cm
 HZCM 268.27206 Hz/cm



Current Data Parameters
 NAME dpkqnp13C
 EXPNO 1681
 PROCNO 1

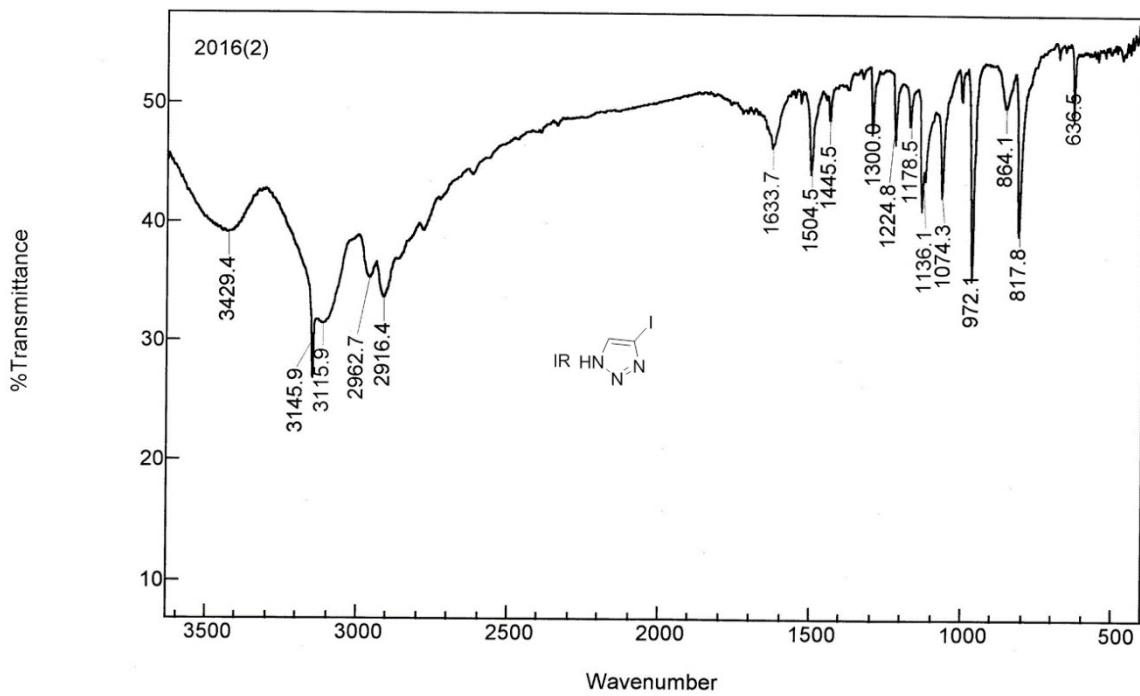
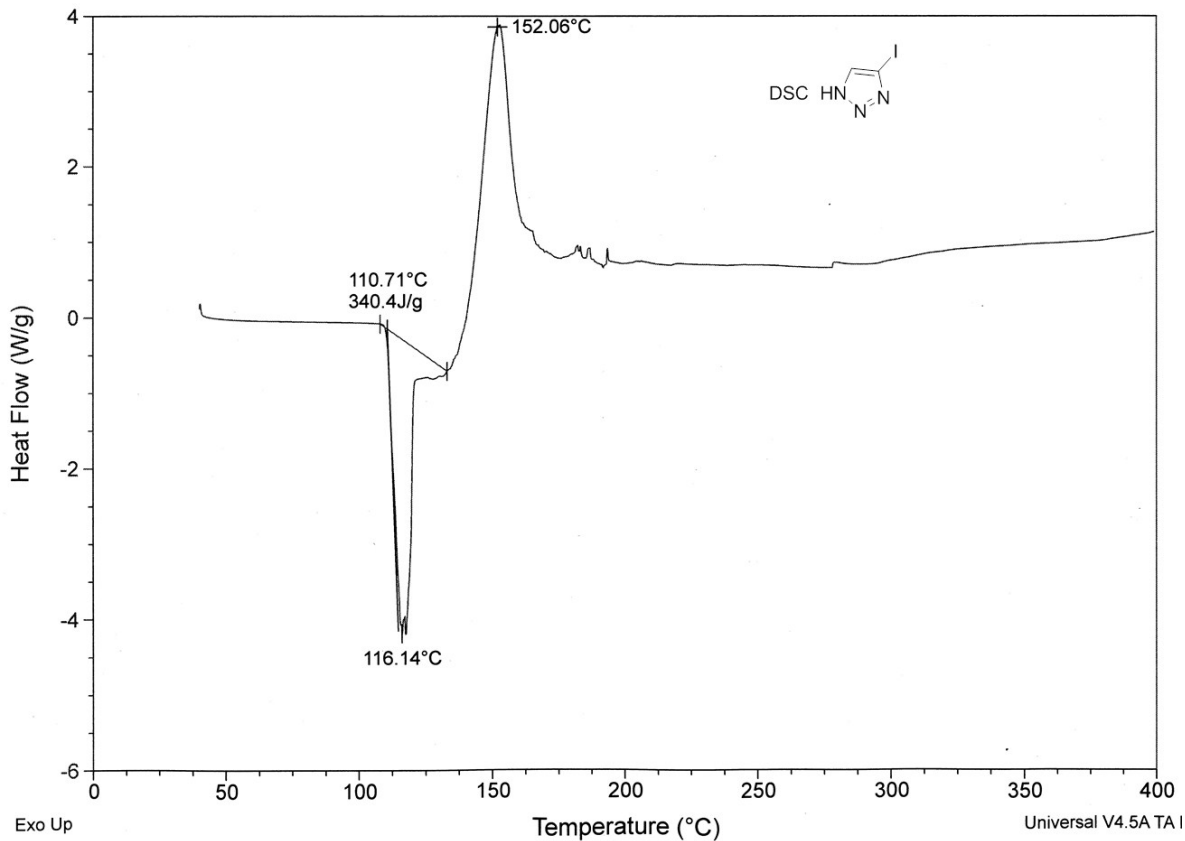
F2 - Acquisition Parameters
 Date_ 20150829
 Time 10.07
 INSTRUM spect
 PROBHD 5 mm QNP 1H/13
 PULPROG zgpg30
 TD 32768
 SOLVENT CDCl3
 NS 2975
 DS 0
 SWH 17985.611 Hz
 FIDRES 0.548877 Hz
 AQ 0.9110004 sec
 RG 16390.4
 DW 27.800 usec
 DE 6.00 usec
 TE 300.0 K
 D1 1.0000000 sec
 d11 0.0300000 sec
 d12 0.0000200 sec

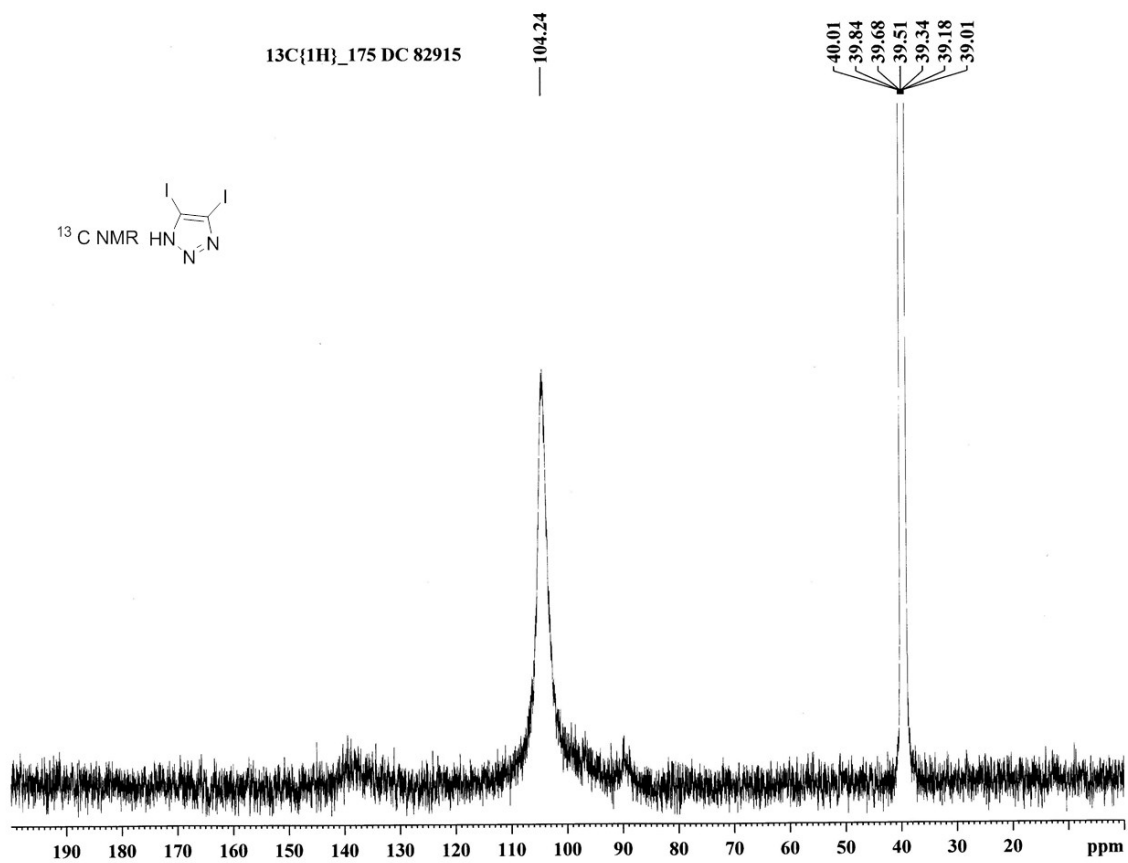
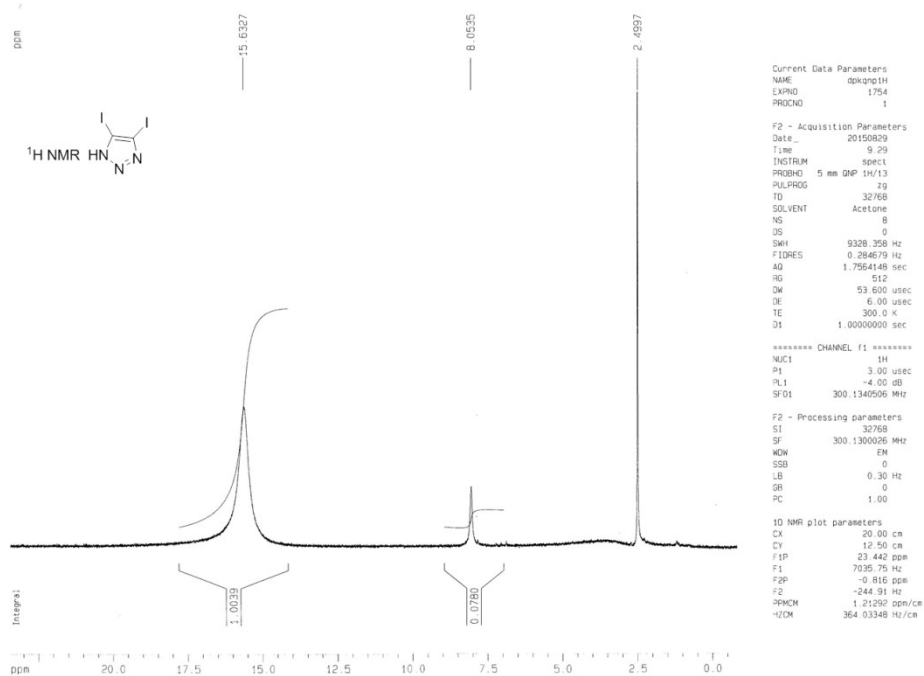
***** CHANNEL f1 *****
 NUC1 13C
 P1 4.00 usec
 PL1 -5.00 dB
 SF01 75.4752953 MHz

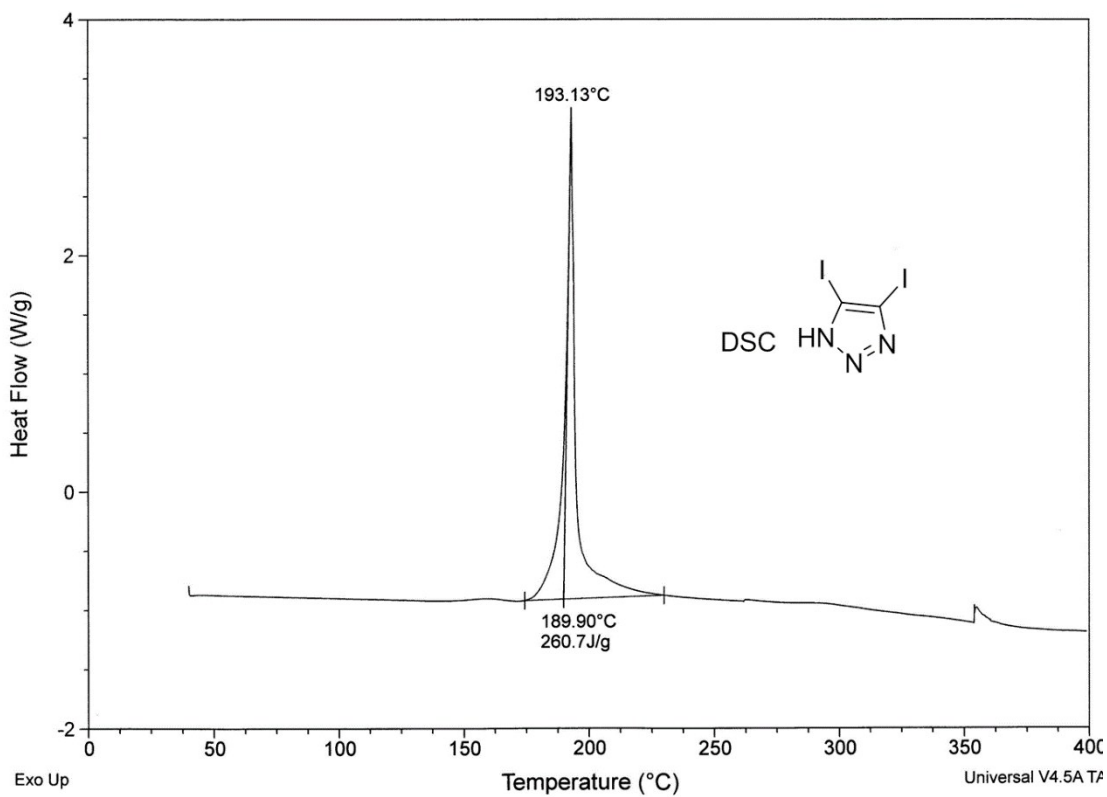
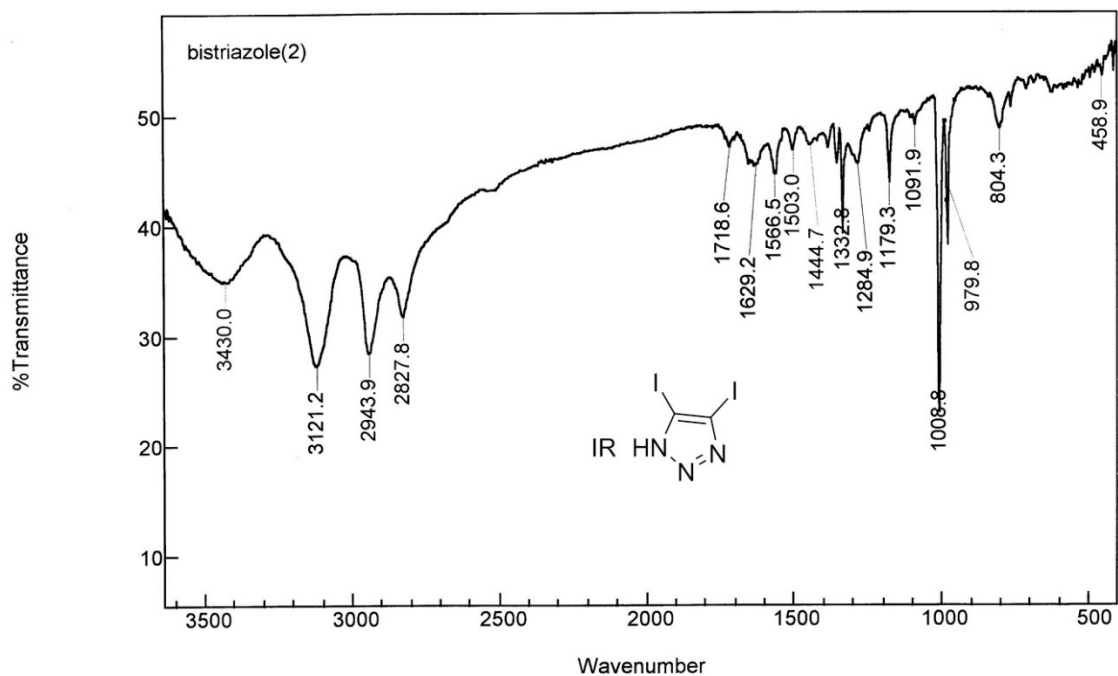
***** CHANNEL f2 *****
 CPDPRG2 waltz16
 NUC2 1H
 PCPD2 100.00 usec
 PL2 120.00 dB
 PL12 17.00 dB
 PL13 17.00 dB
 SF02 300.1312005 MHz

F2 - Processing parameters
 SI 32768
 SF 75.4677886 MHz
 WDW EM
 SSB 0
 LB 3.00 Hz
 GB 0
 PC 1.40

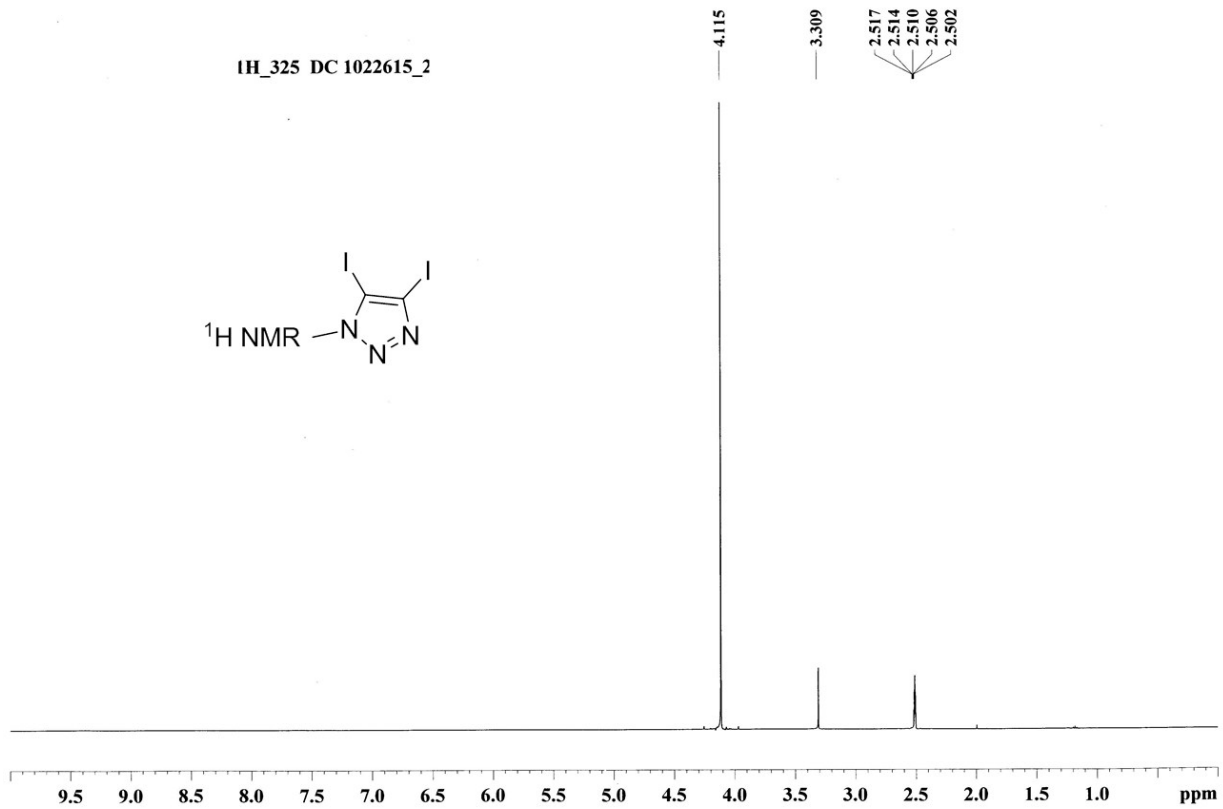
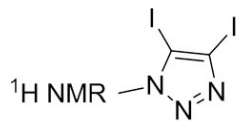
ID NMR plot parameters
 CX 20.00 cm
 CY 50.00 cm
 F1P 215.000 ppm
 F1 16225.58 Hz
 F2P -5.000 ppm
 F2 -373.34 Hz
 PPMCM 11.00000 ppm/cm
 HZCM 830.14563 Hz/cm



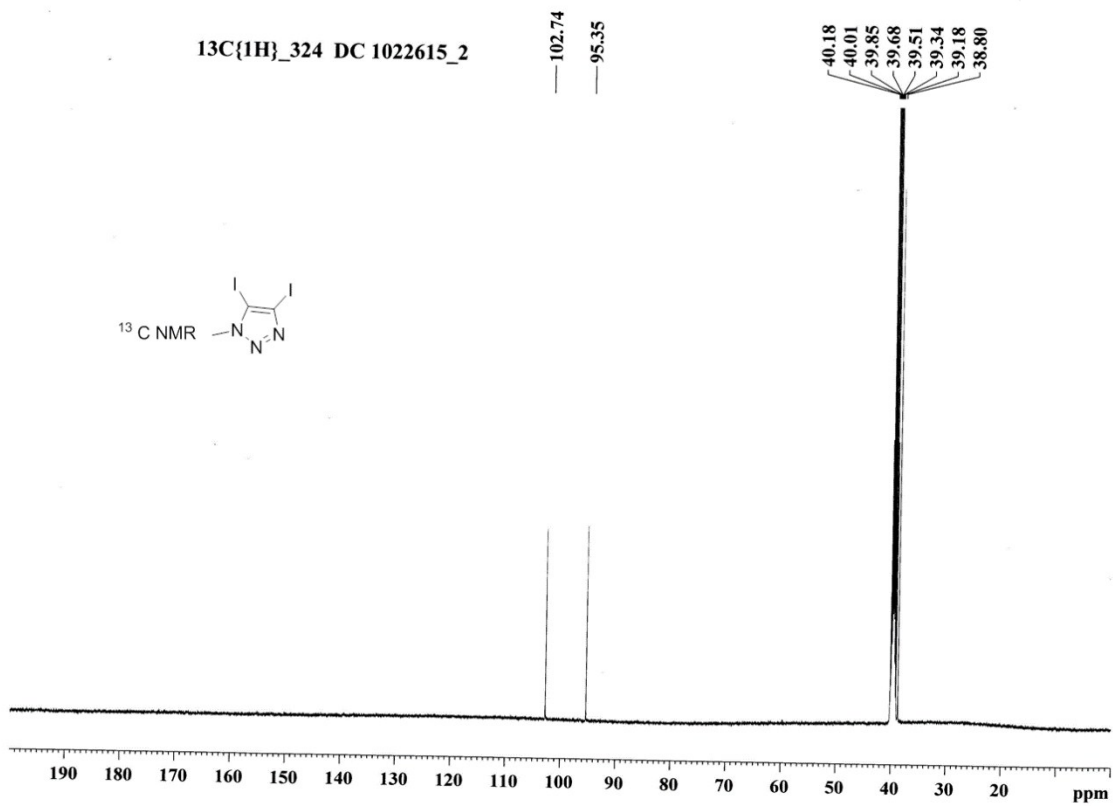
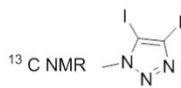


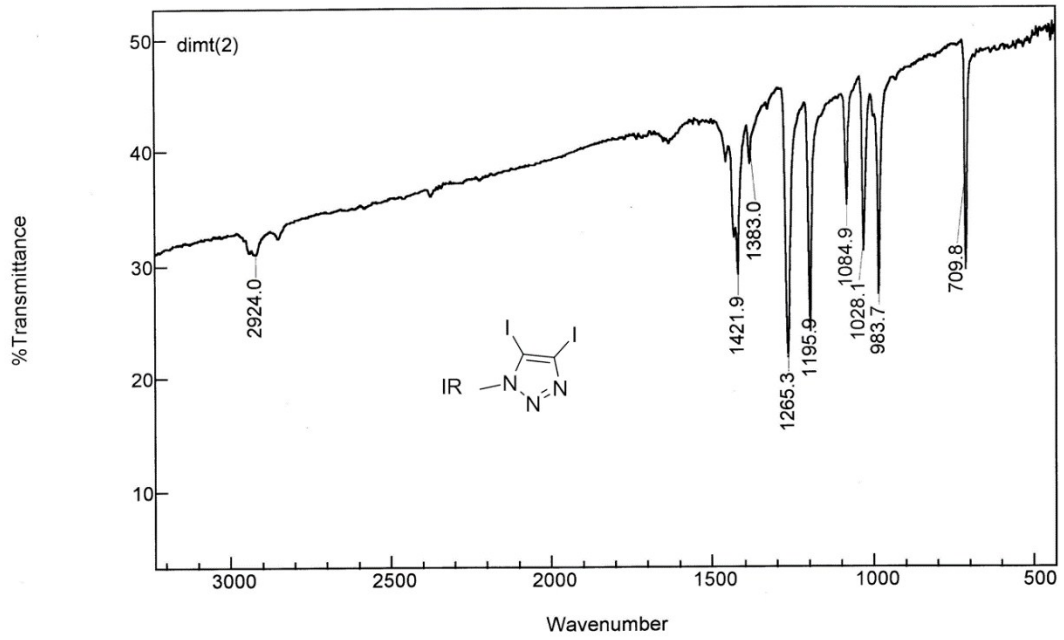
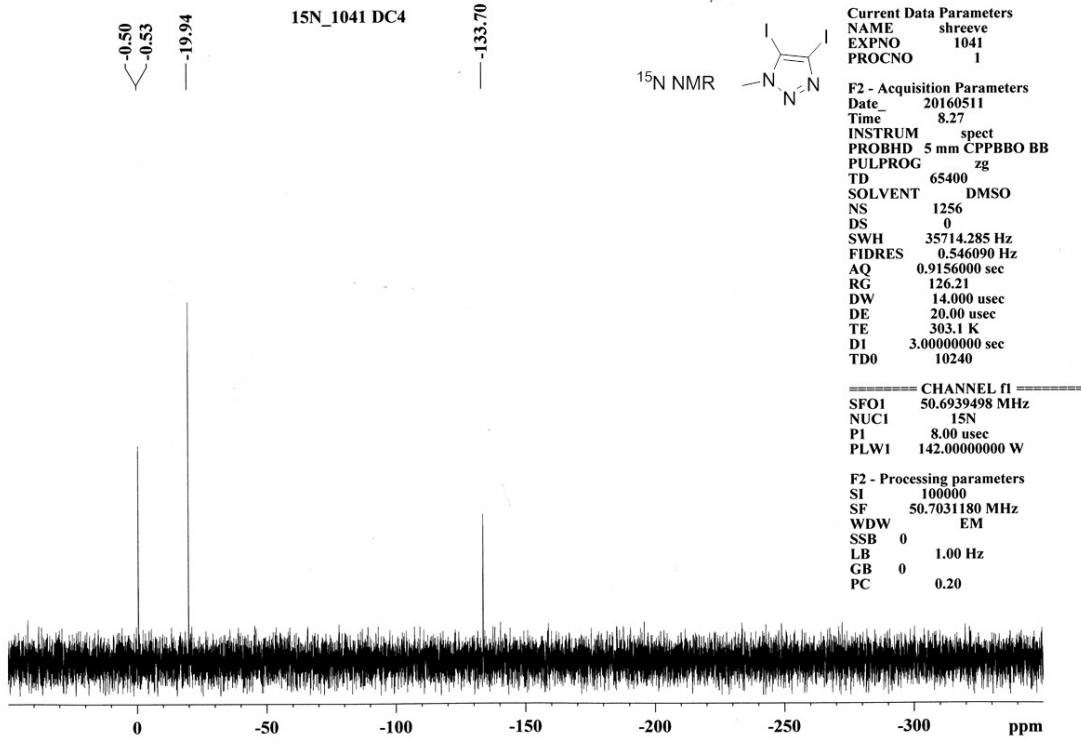


¹H_325 DC 1022615_2



¹³C{¹H}_324 DC 1022615_2

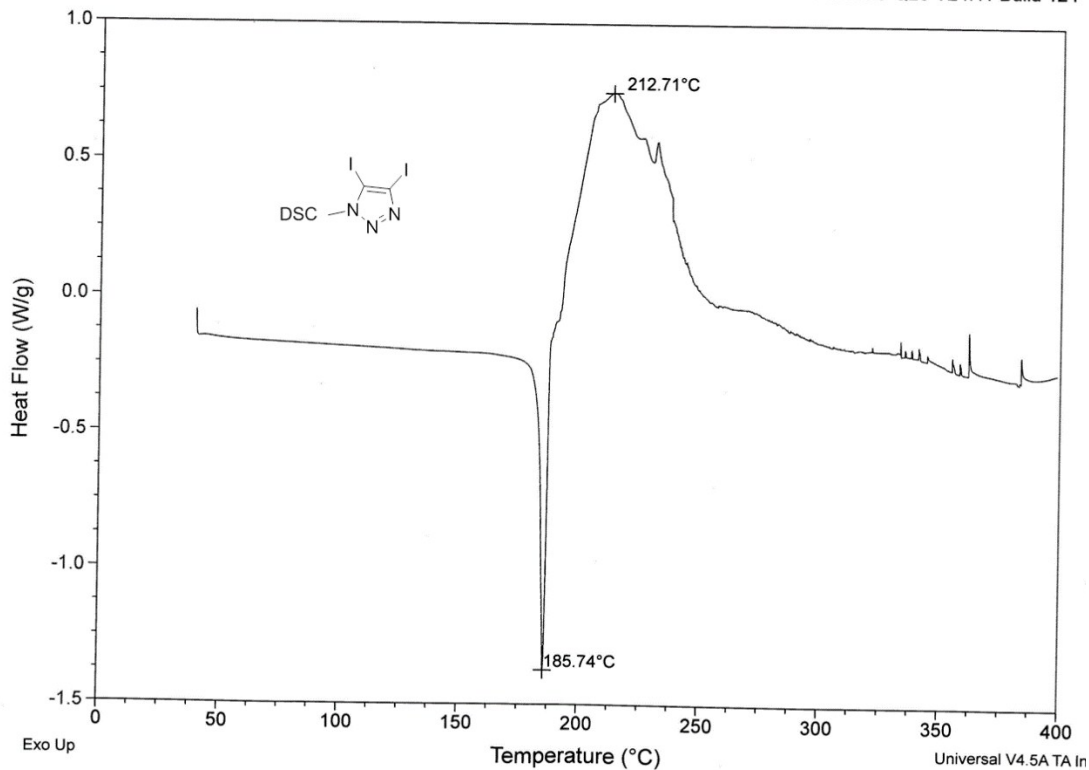




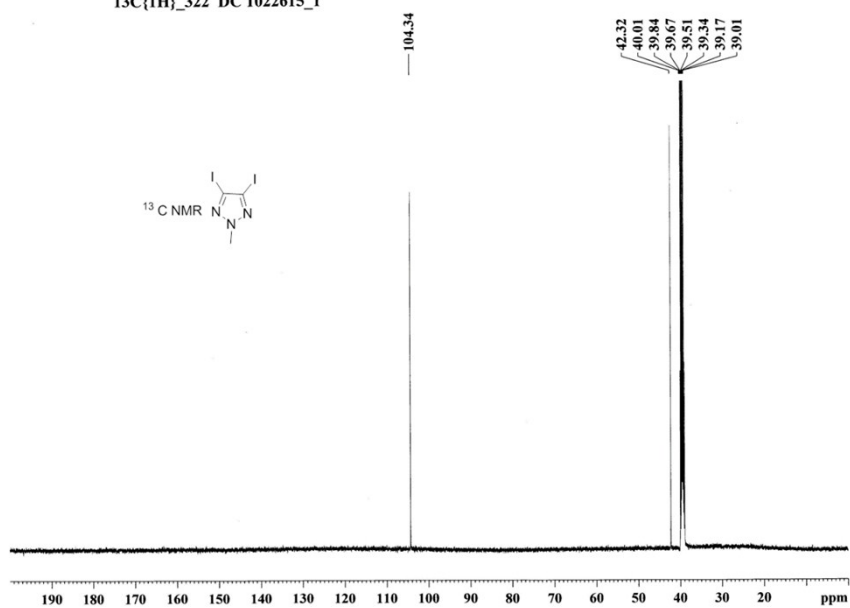
Sample: diiodomethyltriazole-b
Size: 1.2000 mg
Method: Ramp

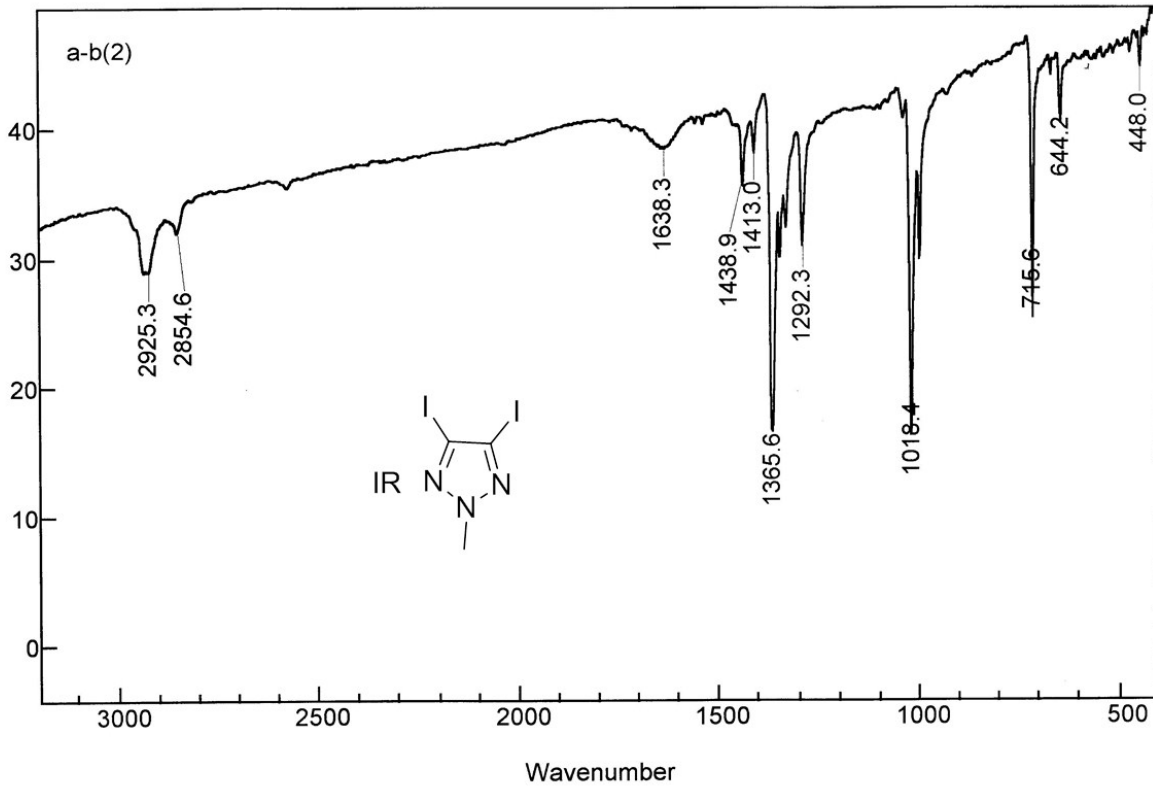
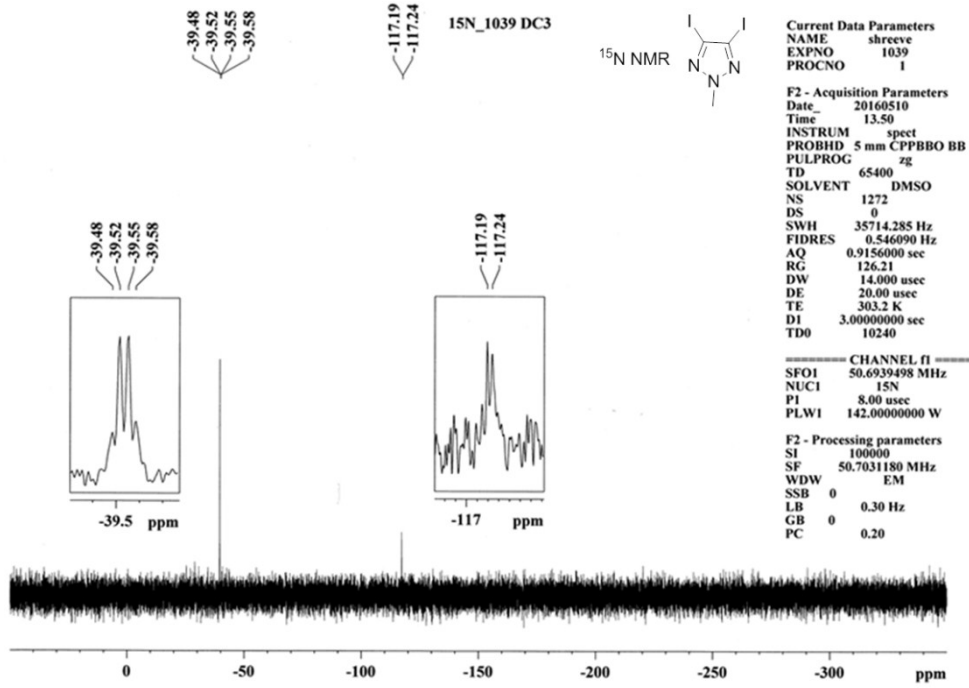
DSC

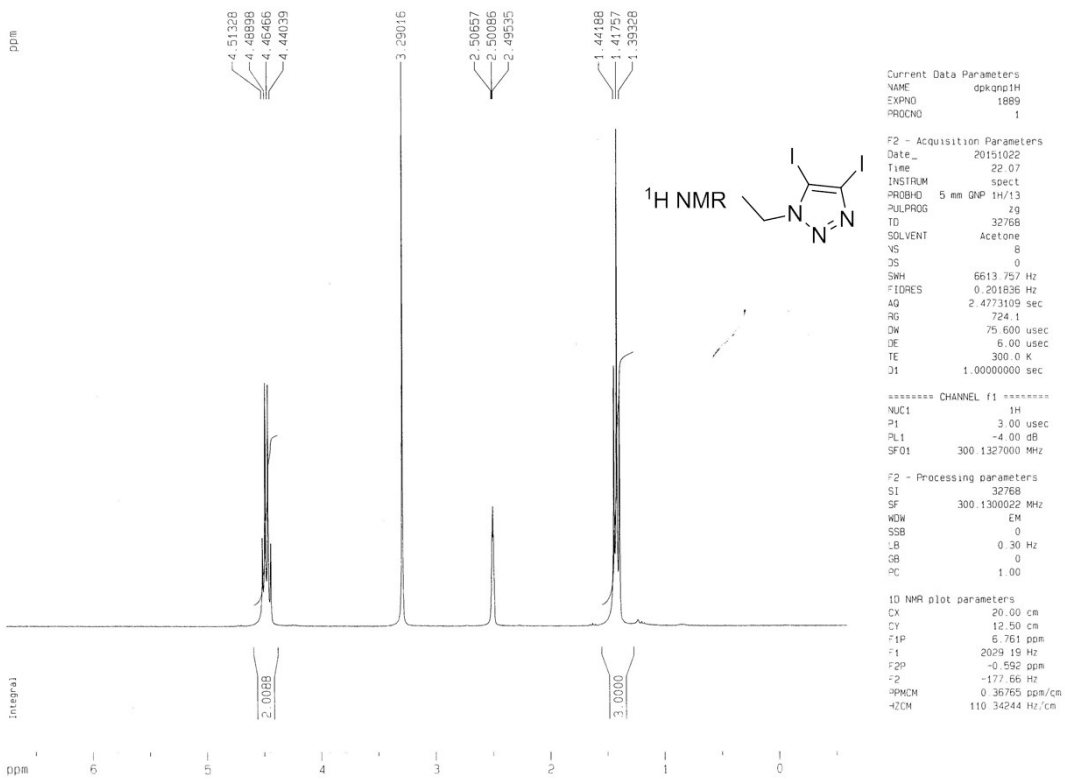
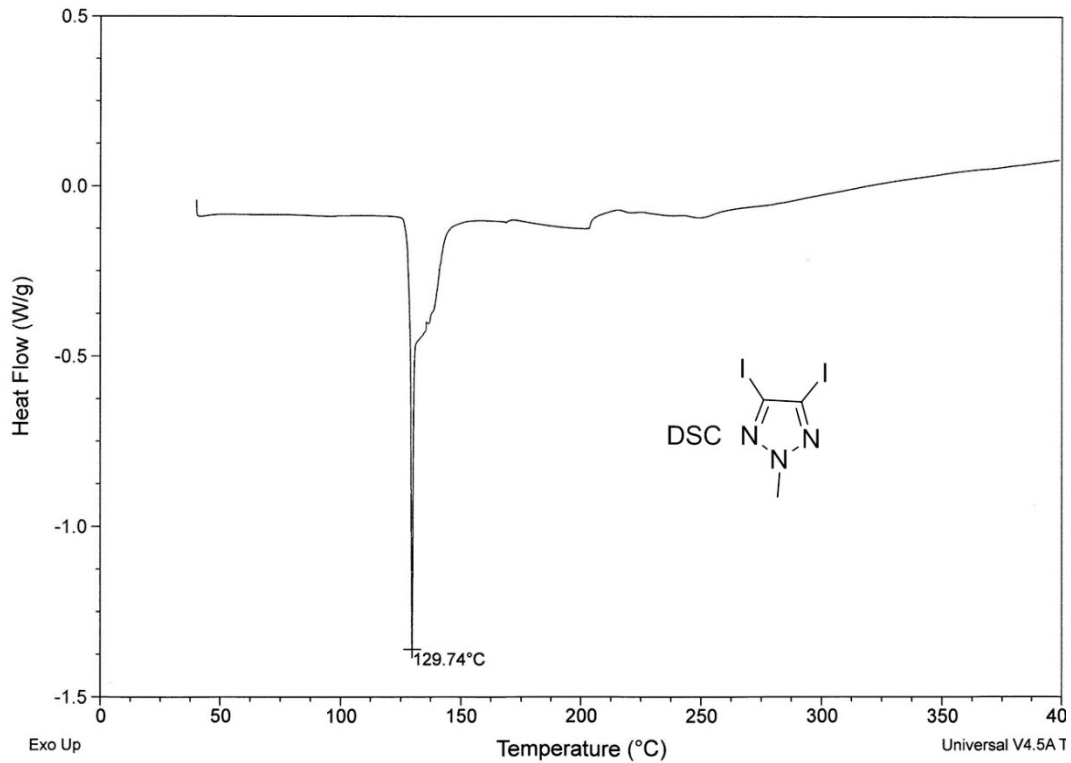
File: C:\...Deepak\diiodomethyltriazole-b
Operator: dc
Run Date: 26-Oct-2015 14:24
Instrument: DSC Q20 V24.11 Build 124

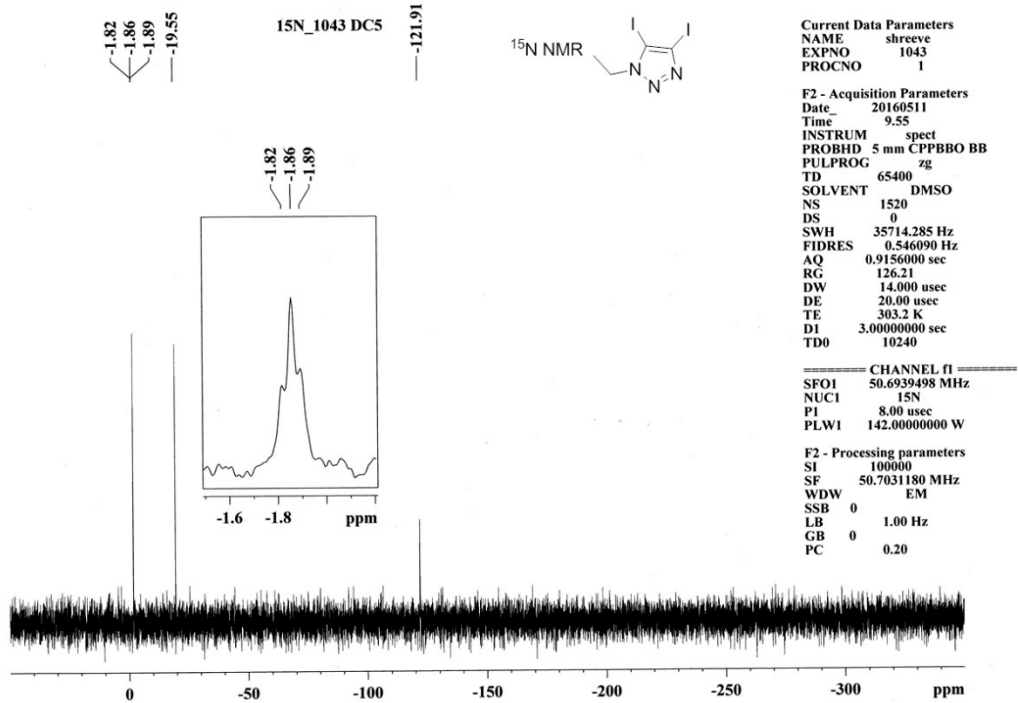
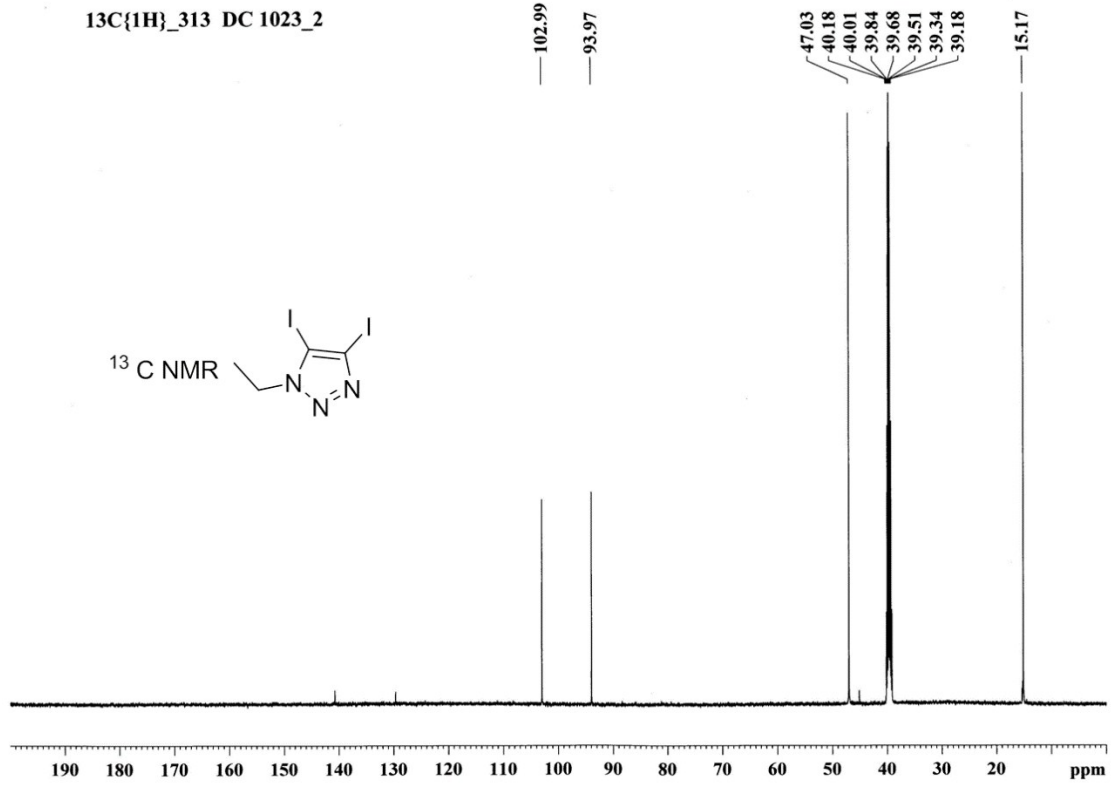


¹³C{¹H}_322 DC 1022615_1

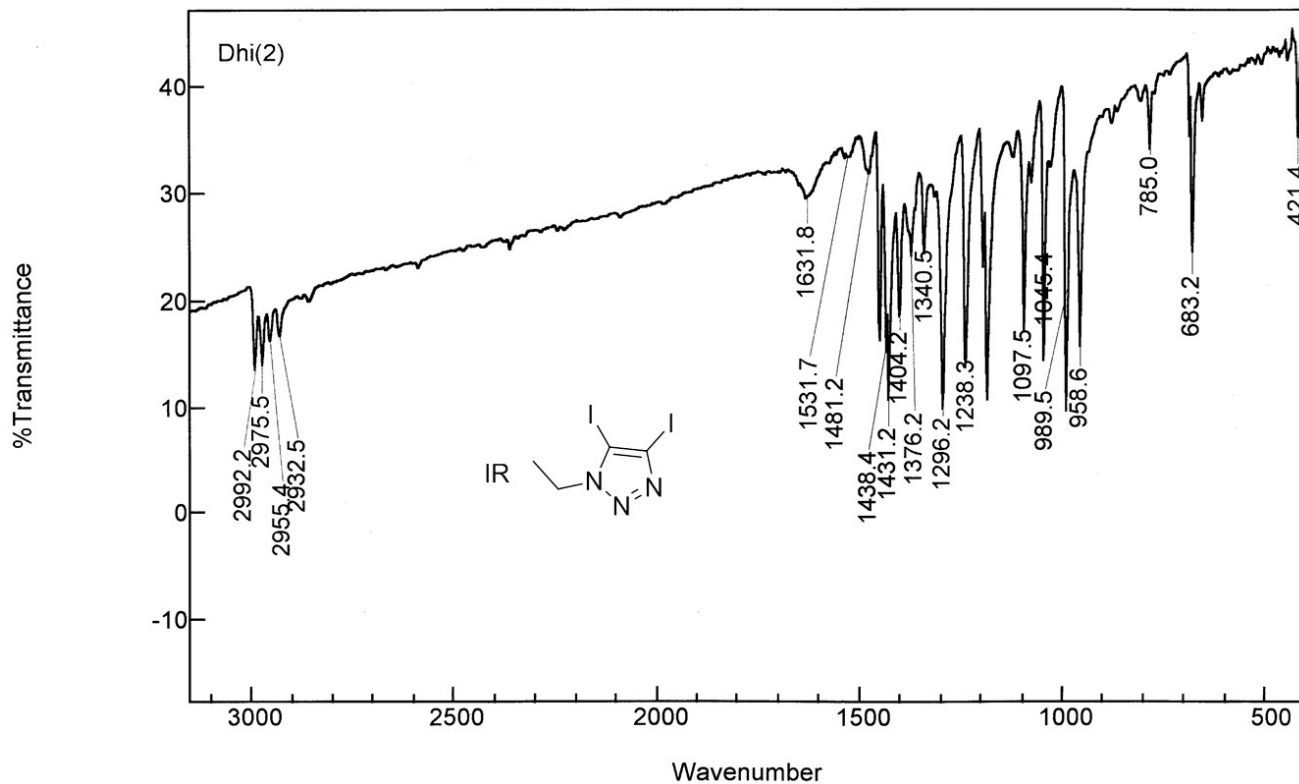








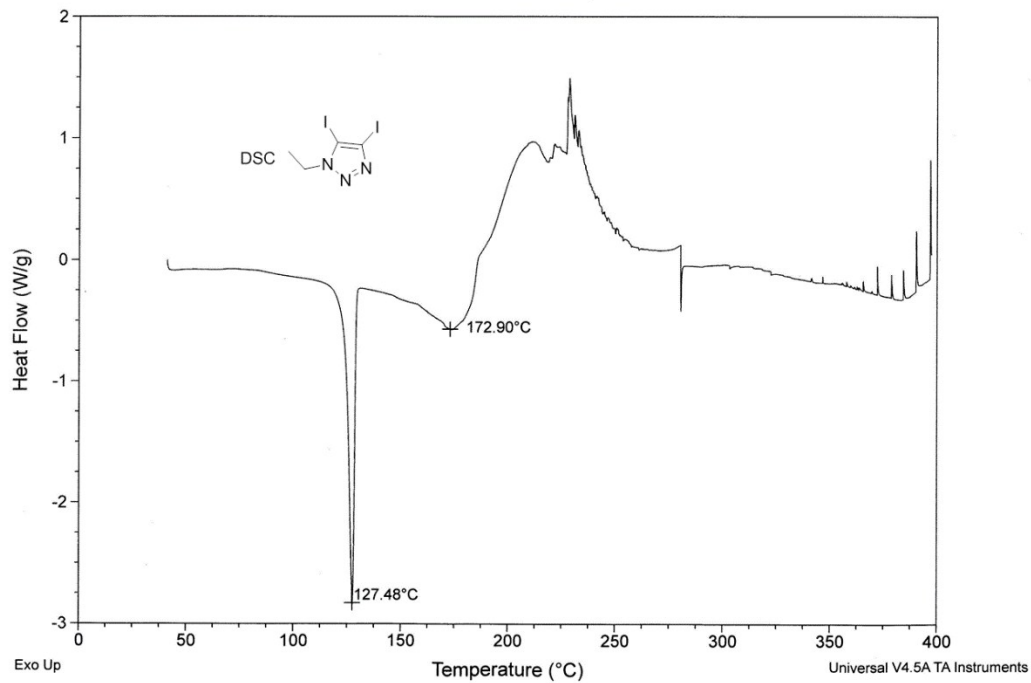
Bio-Rad Merlin

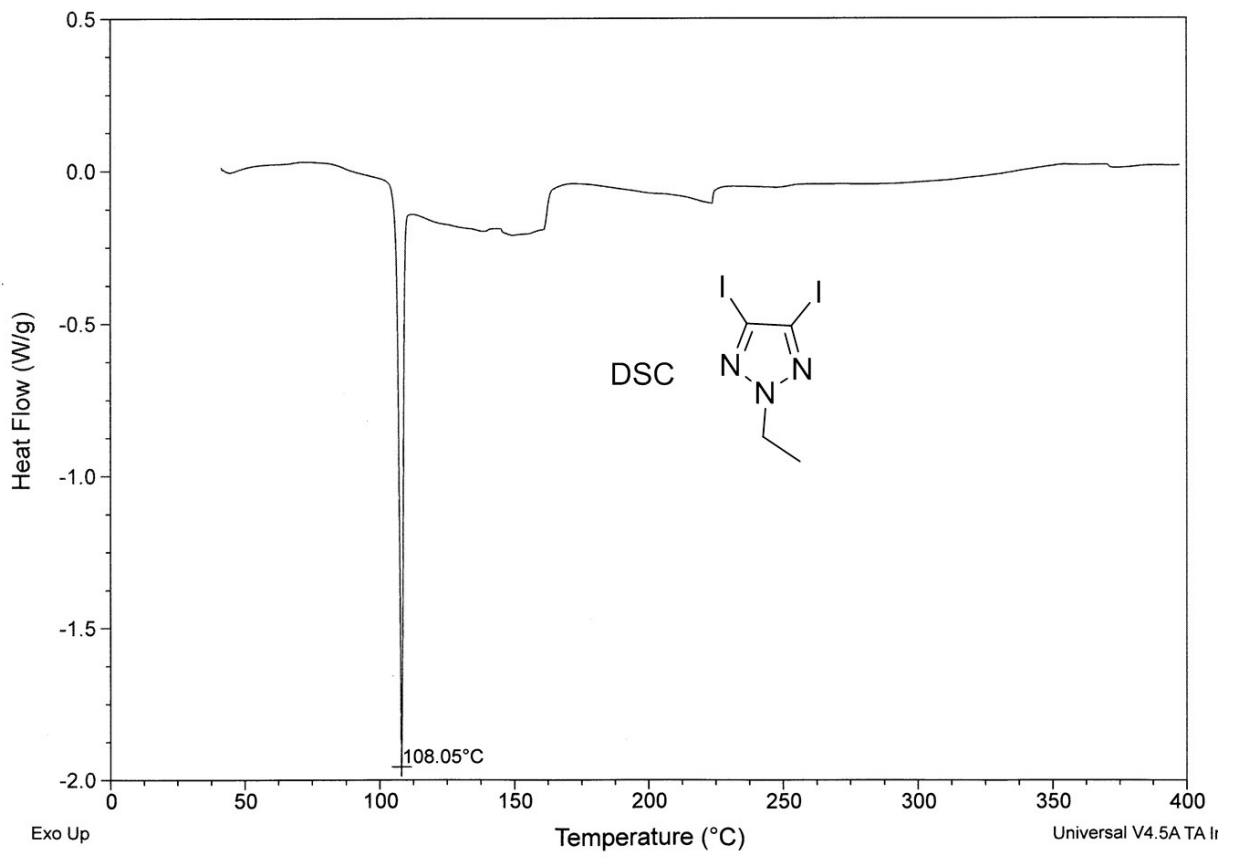
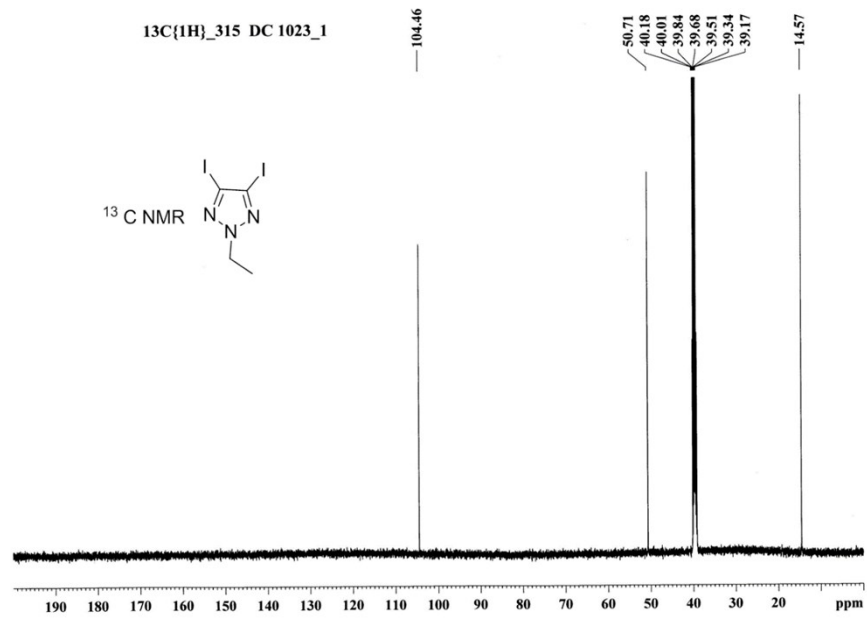


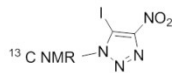
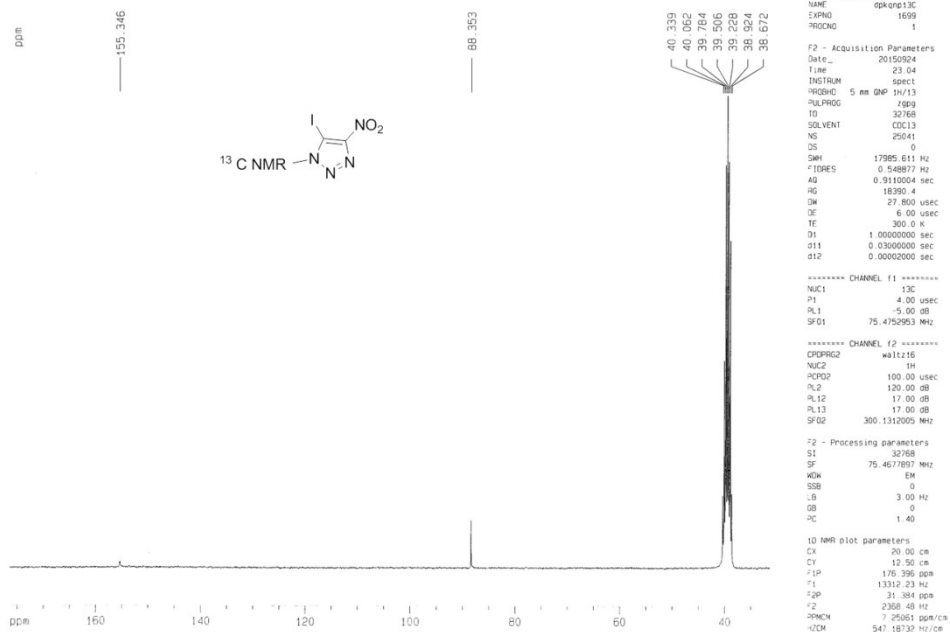
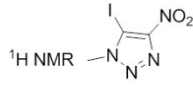
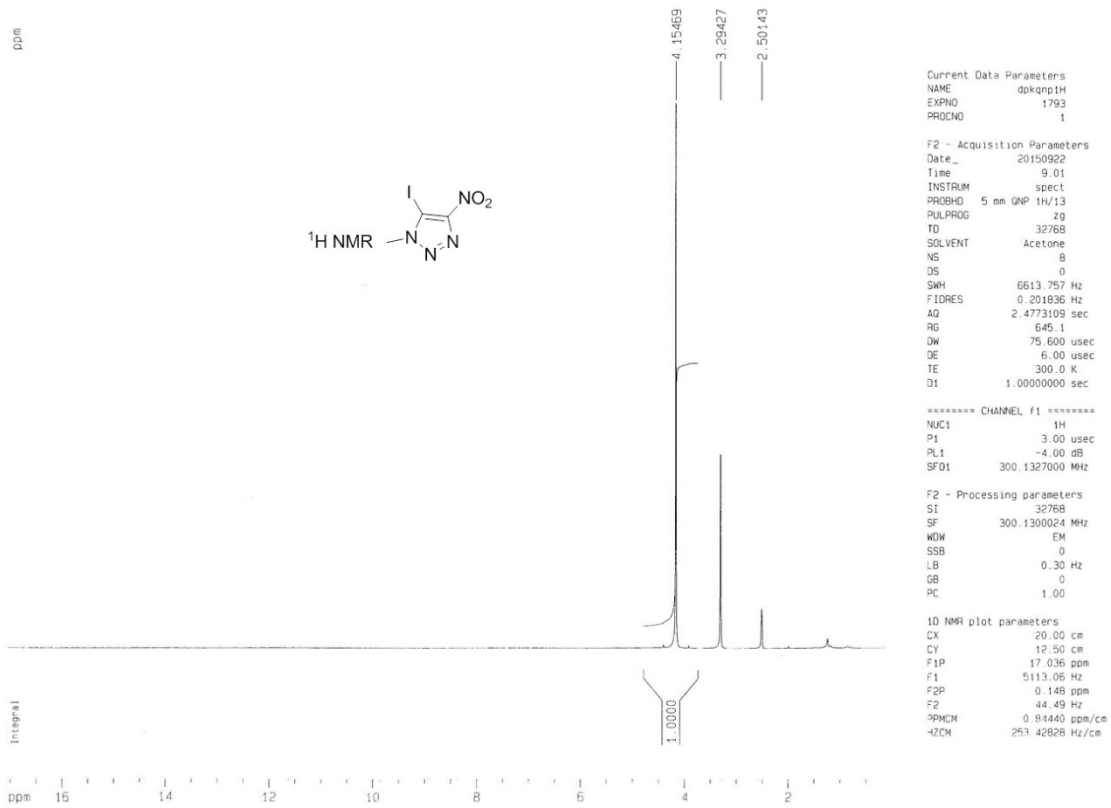
Sample: DC
 Size: 1.0000 mg
 Method: Ramp

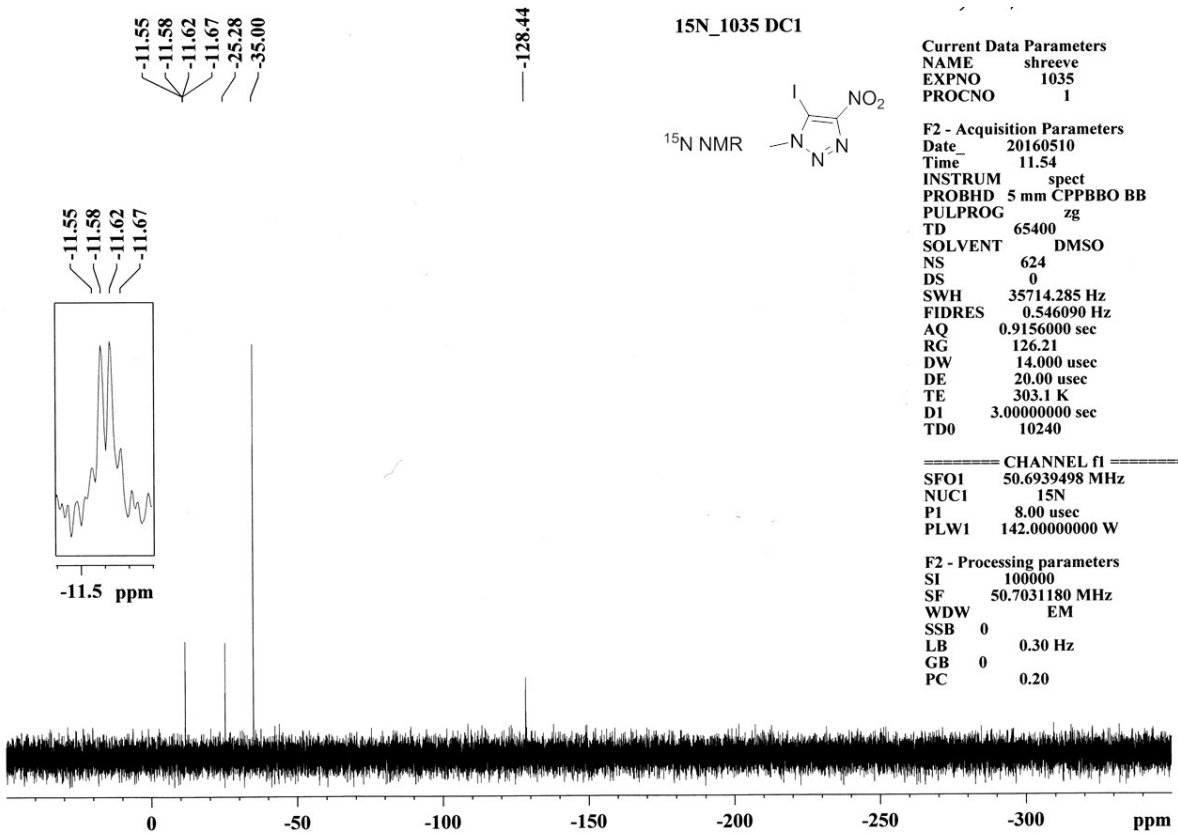
DSC

File: C:\TA\Data\DSC\Deepak\DC.001
 Operator: DC
 Run Date: 23-Oct-2015 09:39
 Instrument: DSC Q20 V24.11 Build 124

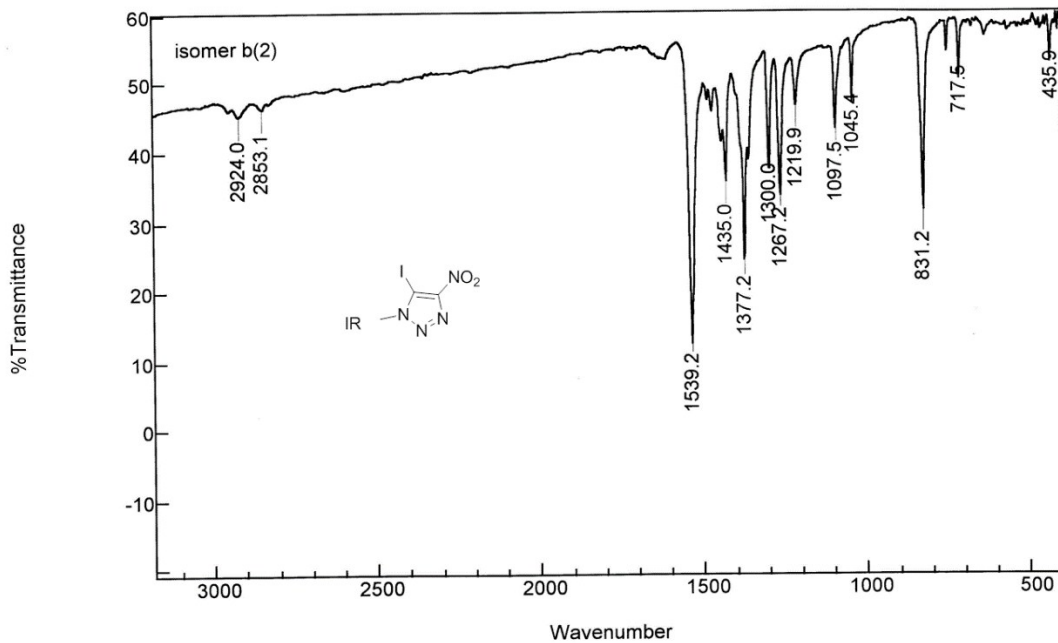


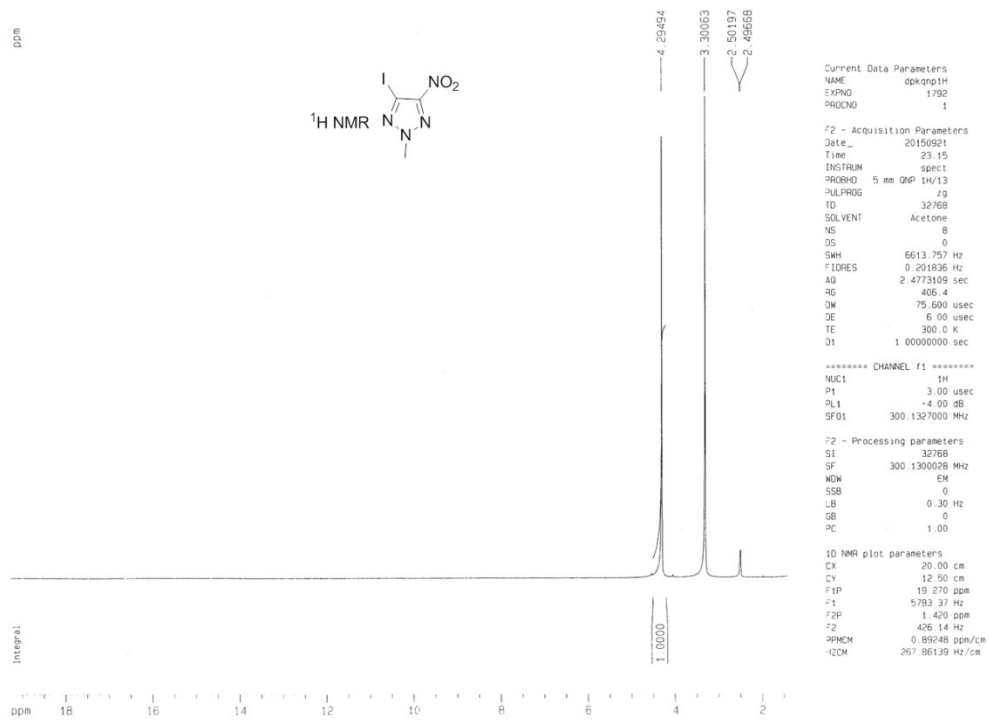
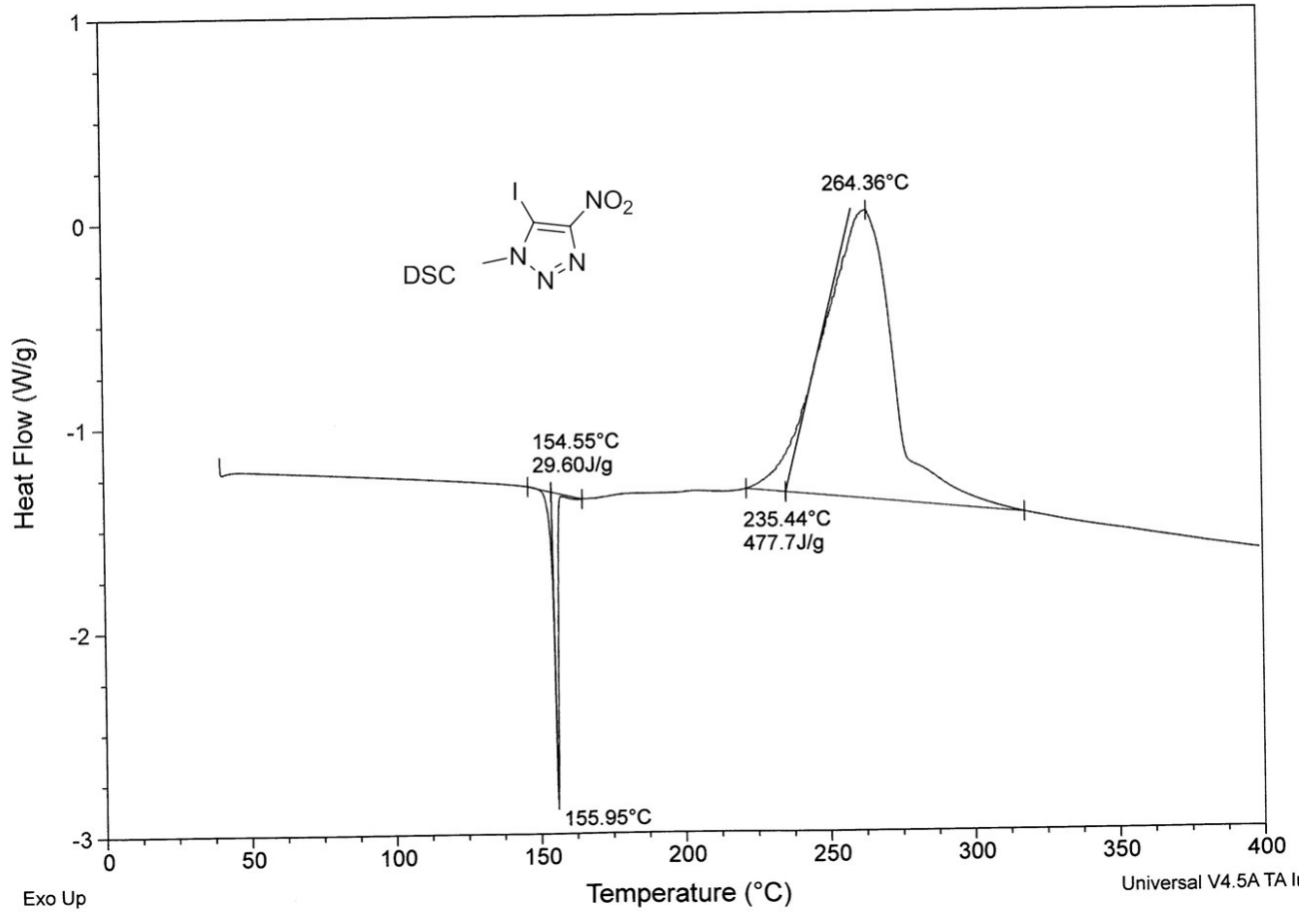


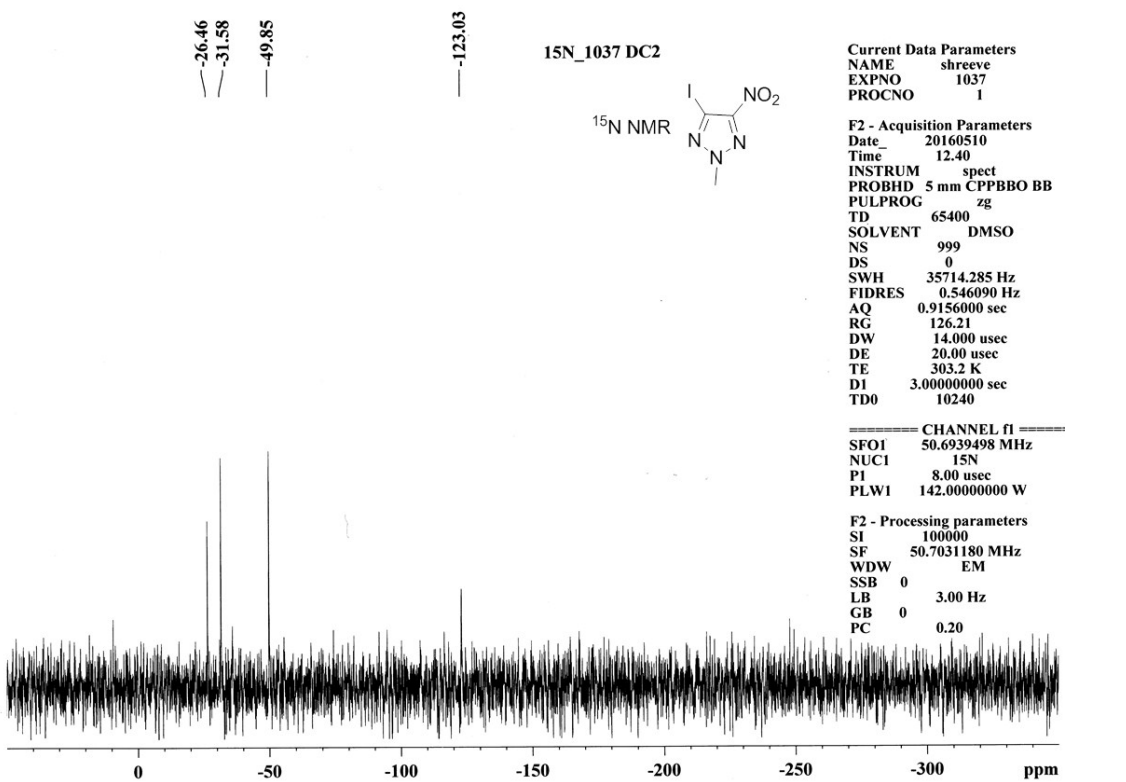
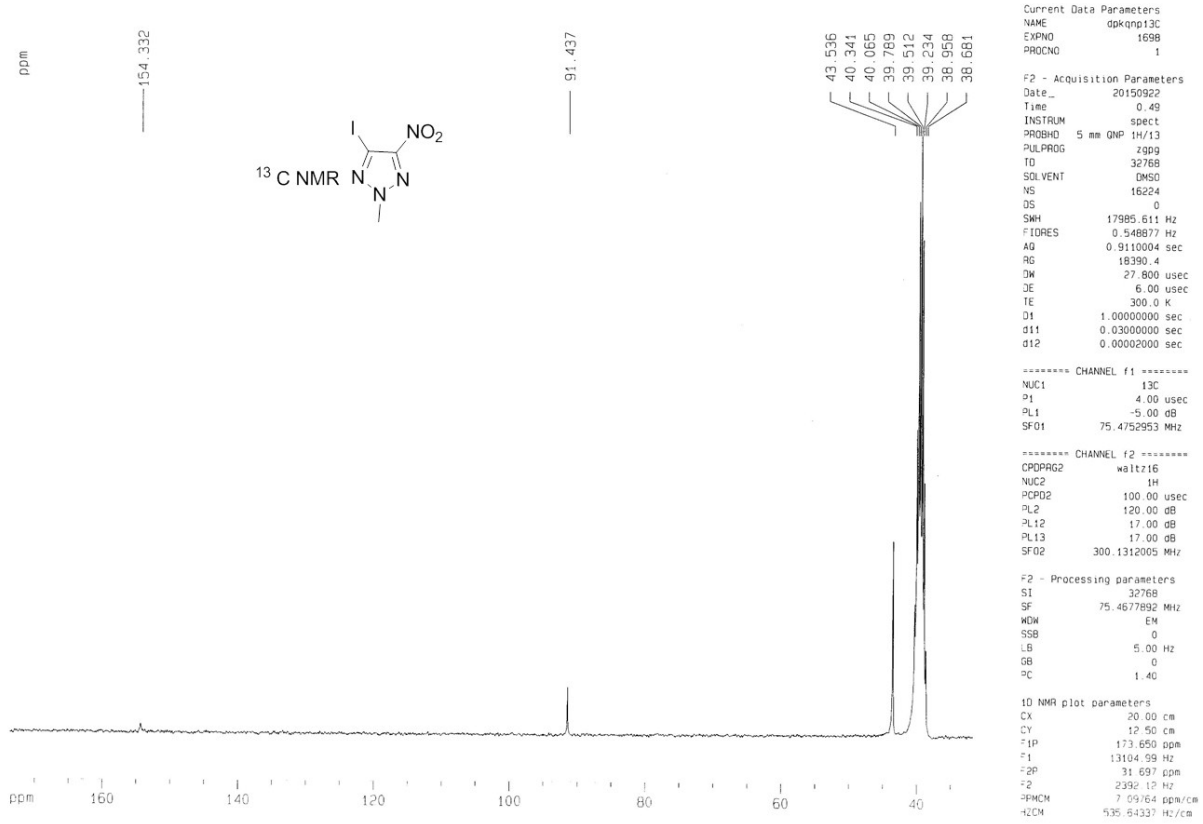


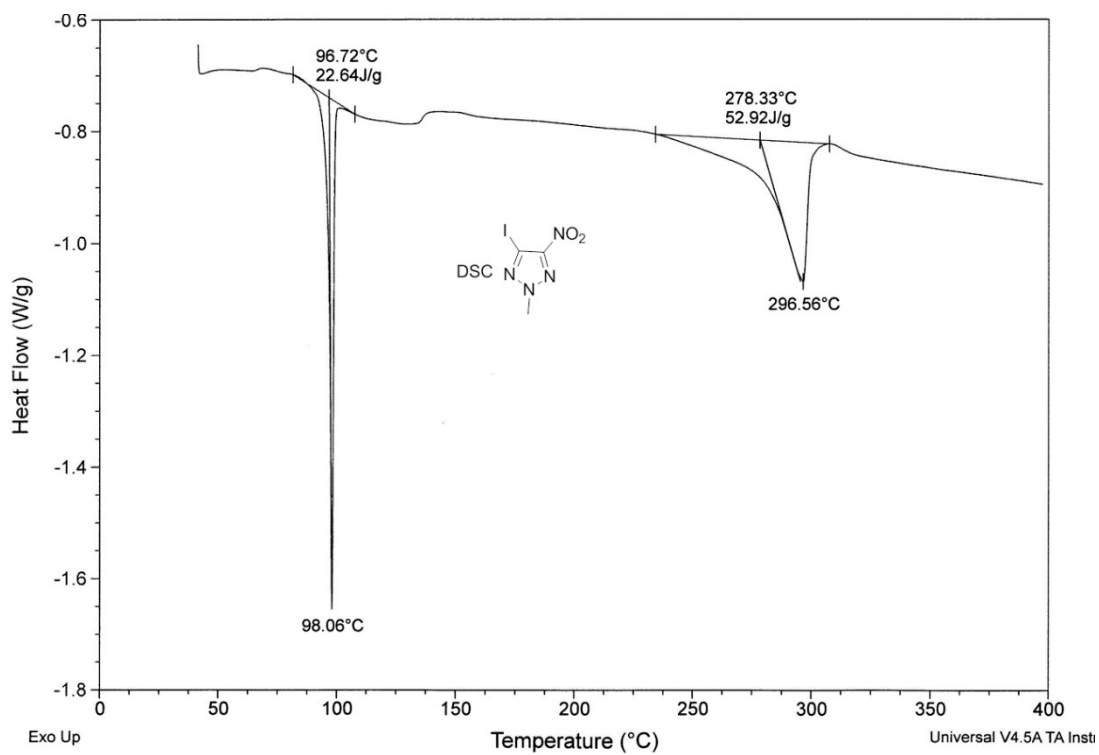
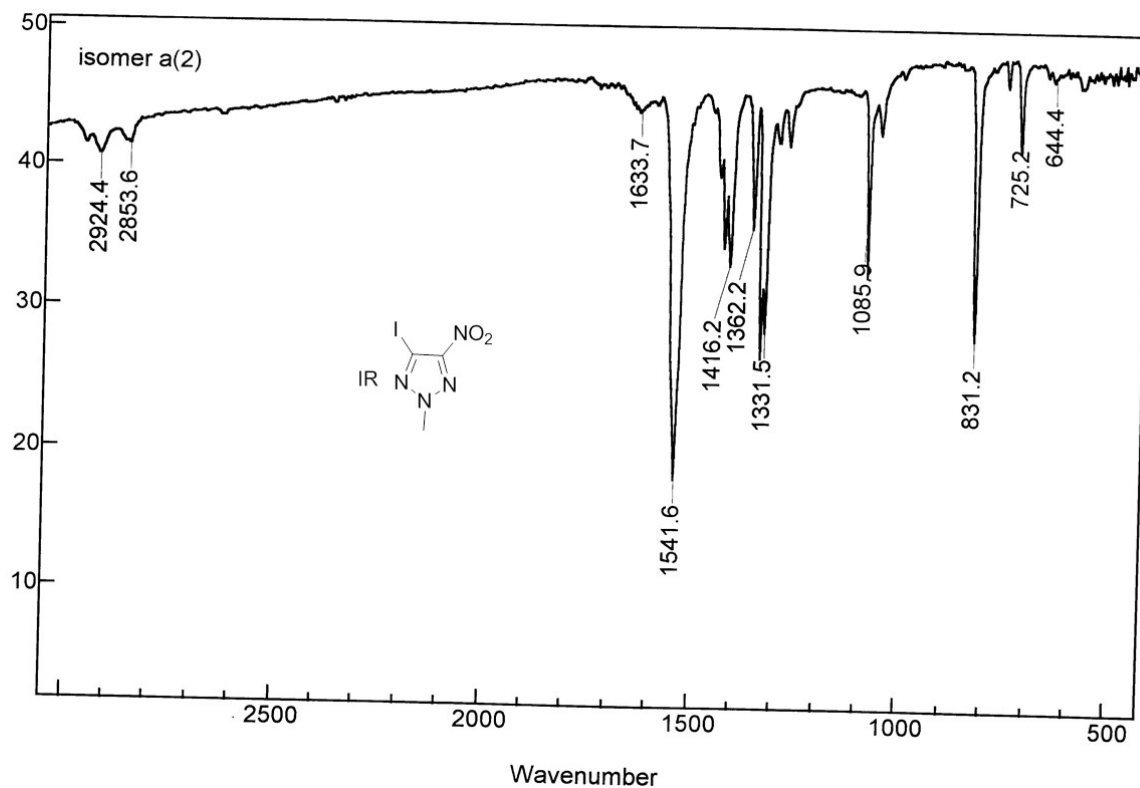


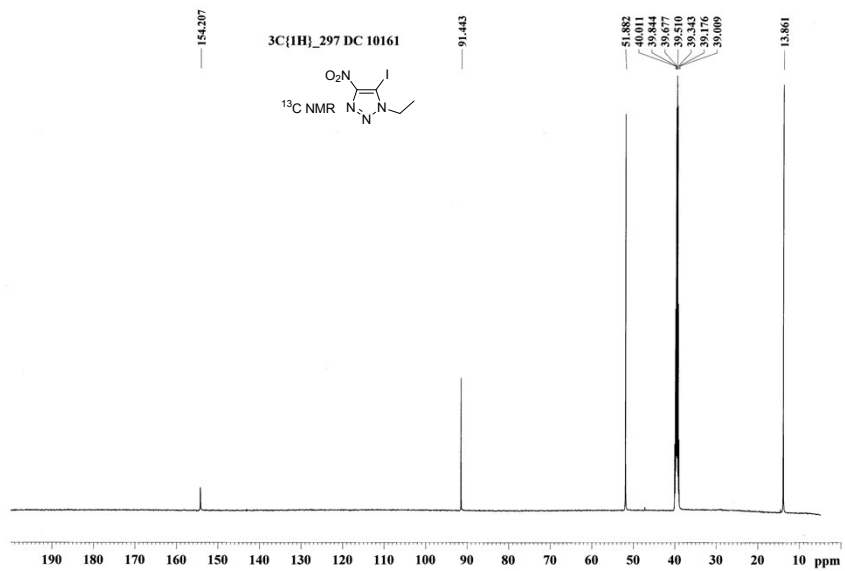
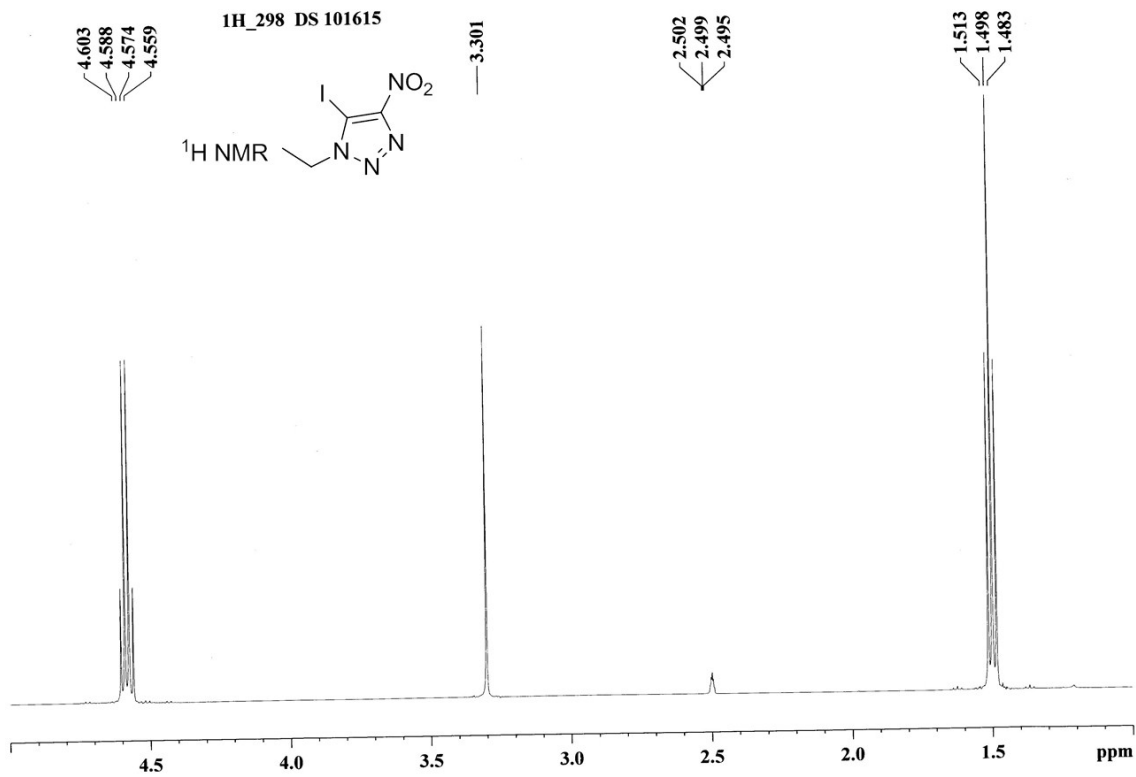
Bio-Rad Merlin

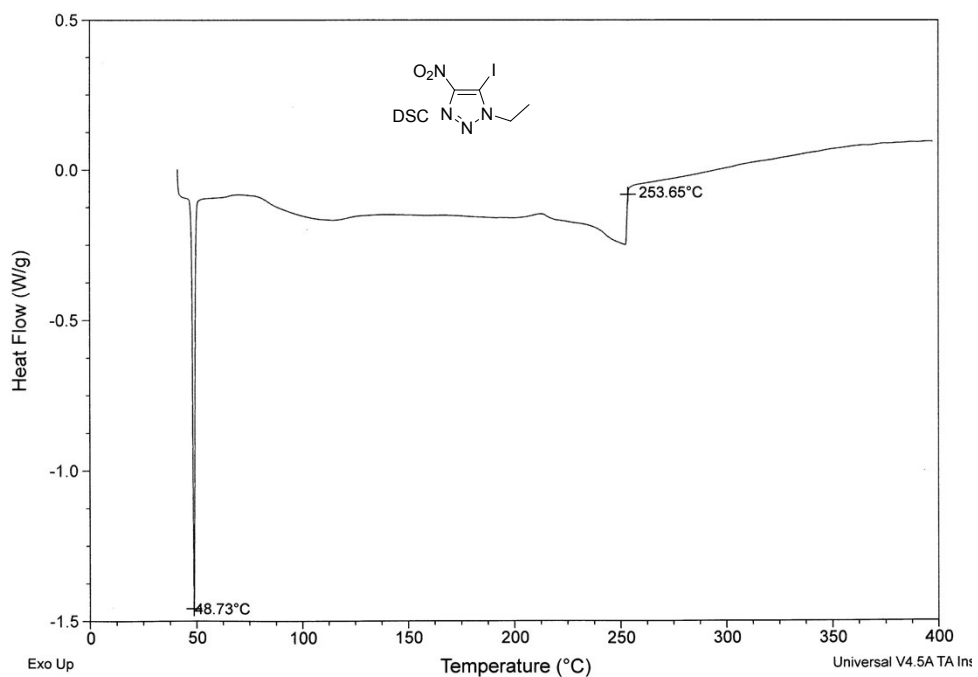
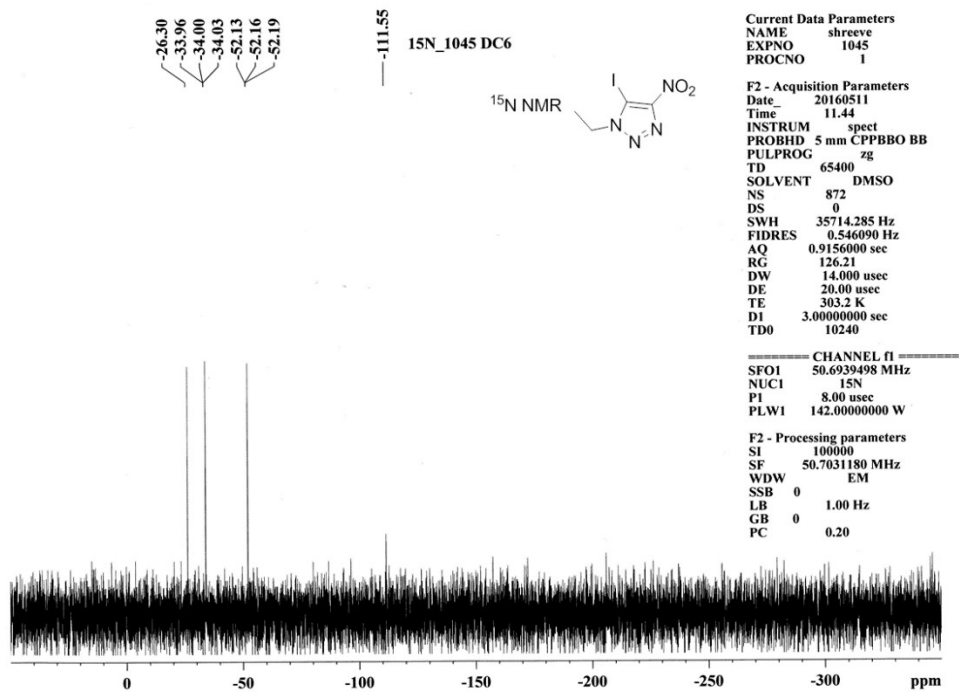


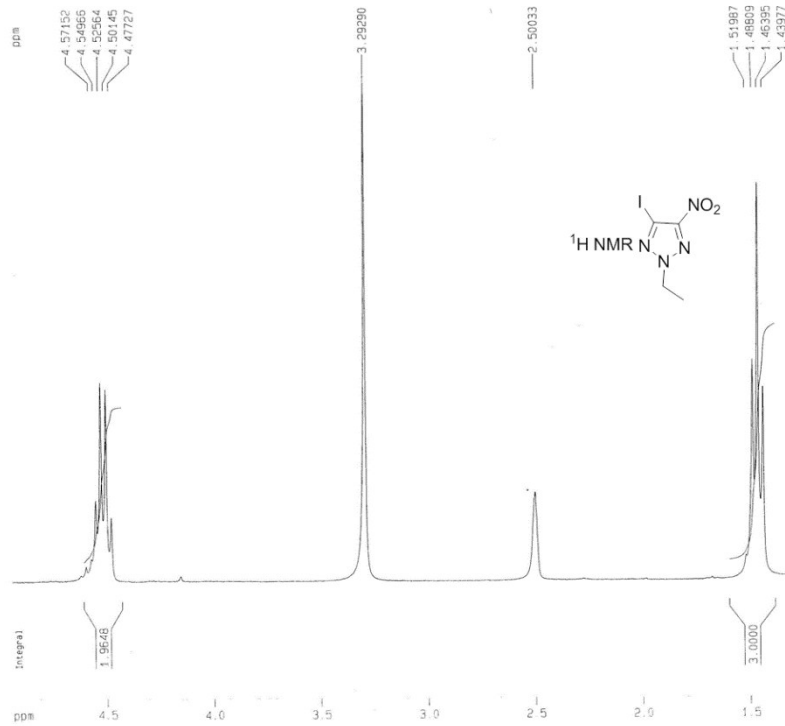












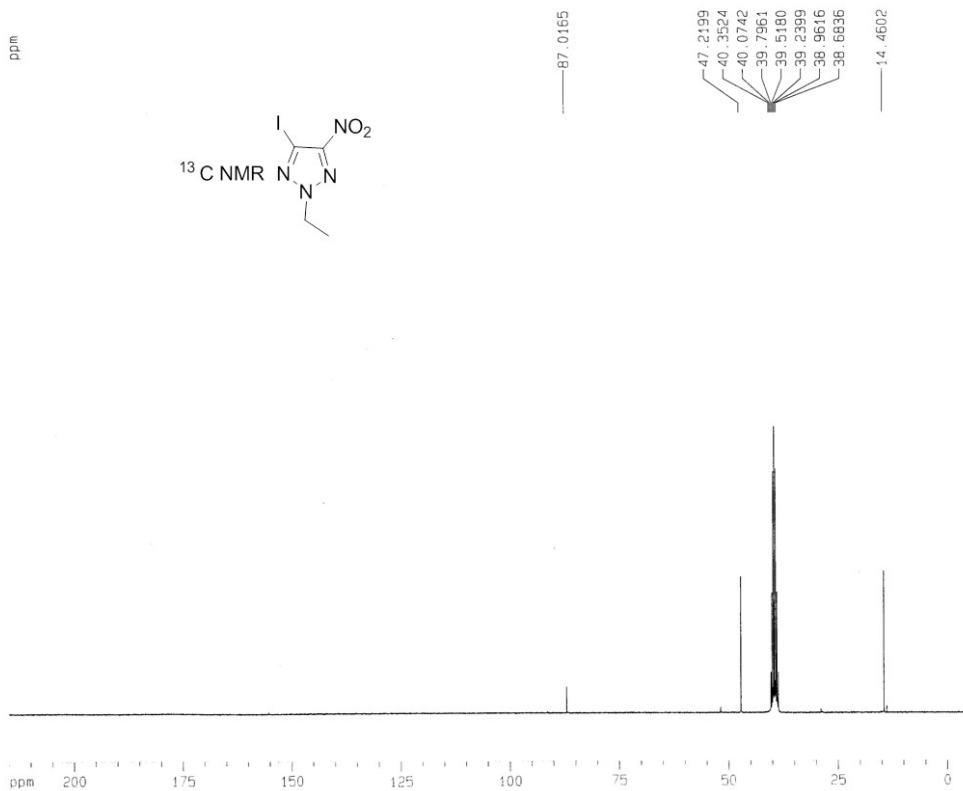
Current Data Parameters
 NAME dpknp1H
 EXPNO 1805
 PROCNO 1

F2 - Acquisition Parameters
 Date_ 20151015
 Time 21.51
 INSTRUM spect
 PROBHD 5 mm QNP 1H/13
 PULPROG zg
 TD 32768
 SOLVENT Acetone
 NS 8
 DS 0
 SWH 6613.757 Hz
 FIDRES 0.201836 Hz
 AQ 2.4773109 sec
 RG 574.7
 DW 75.600 usec
 DE 6.00 usec
 TE 300.0 K
 D1 1.0000000 sec

===== CHANNEL f1 =====
 NUC1 1H
 P1 3.00 usec
 PL1 -4.00 dB
 SF01 300.1327000 MHz

F2 - Processing parameters
 SI 32768
 SF 300.1300024 MHz
 WDW EM
 SSB 0
 LB 0.30 Hz
 GB 0
 PC 1.00

1D NMR plot parameters
 CX 20.00 cm
 CY 12.50 cm
 F1P 4.942 ppm
 F1 1483.30 Hz
 F2P 1.291 ppm
 F2 387.46 Hz
 GPCMC 0.16256 ppm/cm
 GZCM 54.79194 Hz/cm



Current Data Parameters
 NAME dpknp13C
 EXPNO 1708
 PROCNO 1

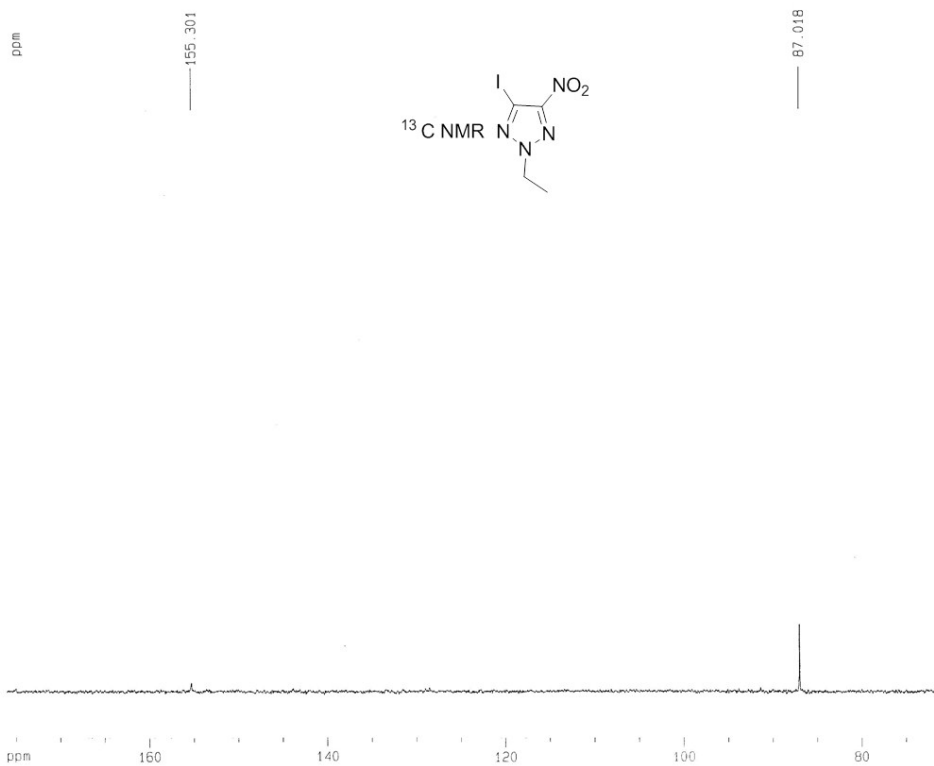
F2 - Acquisition Parameters
 Date_ 20151019
 Time 22.47
 INSTRUM spect
 PROBHD 5 mm QNP 1H/13
 PULPROG zgpg
 TD 32768
 SOLVENT CDCl3
 NS 24253
 DS 0
 SWH 17985.611 Hz
 FIDRES 0.548877 Hz
 AQ 0.9110004 sec
 RG 18390.4
 DW 27.800 usec
 DE 6.00 usec
 TE 300.0 K
 D1 1.0000000 sec
 d11 0.0300000 sec
 d12 0.0002000 sec

===== CHANNEL f1 =====
 NUC1 13C
 P1 4.00 usec
 PL1 -5.00 dB
 SF01 75.4752953 MHz

===== CHANNEL f2 =====
 CPDPRG2 waltz16
 NUC2 1H
 PCPD2 100.00 usec
 PL2 120.00 dB
 PL12 17.00 dB
 PL13 17.00 dB
 SF02 300.1312005 MHz

F2 - Processing parameters
 SI 32768
 SF 75.4677892 MHz
 WDW EM
 SSB 0
 LB 0.50 Hz
 GB 0
 PC 1.40

1D NMR plot parameters
 CX 20.00 cm
 CY 6.00 cm
 F1P 215.000 ppm
 F1 16225.58 Hz
 F2P -5.000 ppm
 F2 -377.34 Hz
 GPCMC 11.09000 ppm/cm
 GZCM 830.14563 Hz/cm



Current Data Parameters
 NAME dpknp13C
 EXPNO 1708
 PROCNO 1

F2 - Acquisition Parameters
 Date_ 20151019
 Time 22.47
 INSTRUM spect
 PROBHD 5 mm QNP 1H/13
 PULPROG zgpg30
 ID 32768
 SOLVENT CDCl3
 NS 24253
 DS 0
 SWH 17985.611 Hz
 FIDRES 0.548877 Hz
 AQ 0.9110004 sec
 RG 18390.4
 OW 27.800 usec
 OE 6.00 usec
 TE 300.0 K
 D1 1.00000000 sec
 d11 0.03000000 sec
 d12 0.00000000 sec

***** CHANNEL f1 *****
 NUC1 13C
 P1 4.00 usec
 PL1 -5.00 dB
 SFO1 75.4752953 MHz

***** CHANNEL f2 *****
 CPDPRG2 waltz16
 NUC2 1H
 PCPD2 100.00 usec
 PL2 120.00 dB
 PL12 17.00 dB
 PL13 17.00 dB
 SFO2 300.1312005 MHz

F2 - Processing parameters
 SI 32768
 SF 75.4677892 MHz
 WDW EM
 SSB 0
 LB 3.00 Hz
 GB 0
 PC 1.40

ID NMR plot parameters
 CX 20.00 cm
 CY 25.00 cm
 FAP 176.097 ppm
 F1 13289.69 Hz
 F2 11.162 ppm
 F2 5370.48 Hz
 PRMCM 5.24675 ppm/cm
 HZCM 395.96051 Hz/cm

