

Supporting Information

Dinuclear Cyclometalated Platinum(II) Complexes Containing Deep Blue Fluorescence Chromophore: Synthesis, Photophysics and Application in Single Dopant White PLEDs

Youming Zhang ^a, Haigang Jiang ^a, Yu Liu ^{a*}, Kaifeng Zhou ^b, Yafei Wang ^a,

Hua Tan^a, Shijian Su ^{b*} and Weiguo Zhu ^{a*}

*^a College of Chemistry, Key Lab of Environment-Friendly Chemistry and Application
in Ministry of Education, Xiangtan University, Xiangtan 411105, China*

*^b State Key Laboratory of Luminescent Materials and Devices (South China University
of Technology) and Institute of Polymer Optoelectronic Materials and Devices, South
China University of Technology, Guangzhou, P. R. China*

Email addresses:

(Y. L) liuyu03b@126.com,

(S. S) mssjsu@scut.edu.cn,

(W. Z) zhuwg18@126.com

Contents

Figure S1. PL spectra of DPy(TPA)-C₆DBCzC₆-DFPt(pic) in different concentrations at room temperature (from 5×10⁻⁷ M to 3.2×10⁻⁵ M).

Figure S2. Cyclic voltammograms of C₆DBCzC₆-DFPt(pic) and DPy(TPA)-C₆DBCzC₆-DFPt(pic) films on platinum electrode in acetonitrile solution containing 0.1 mol/L Bu₄NPF₆ at a scan rate of 100 mV/s by using ferrocene as an internal standard.

Figure S3. ¹H NMR spectra of compound **2** and C₆DBCzC₆-DFPt(pic) in CDCl₃, respectively.

Figure S4. ¹H NMR spectra of compound **7** and DPy(TPA)-C₆DBCzC₆-DFPt(pic) in CDCl₃, respectively.

Figure S5. MALDI-TOF mass spectra of C₆DBCzC₆-DFPt(pic) and DPy(TPA)-C₆DBCzC₆-DFPt(pic), respectively.

Figure S1.

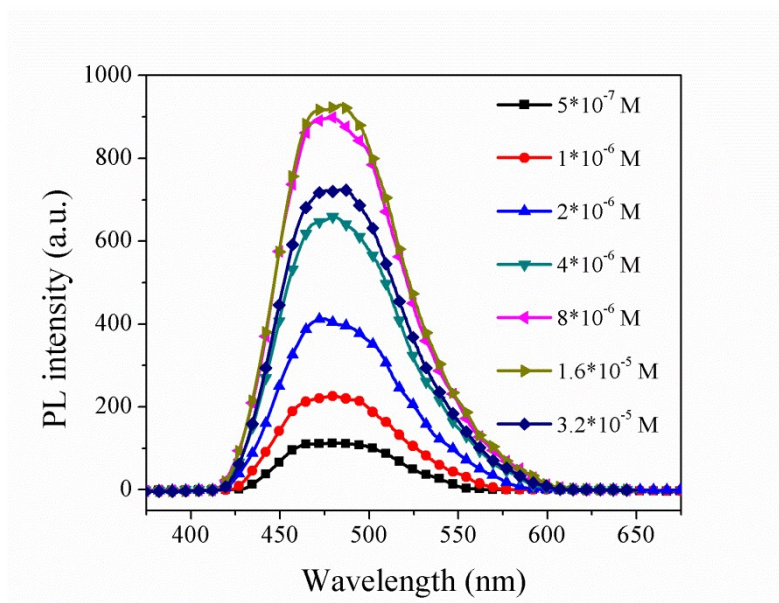


Figure S2.

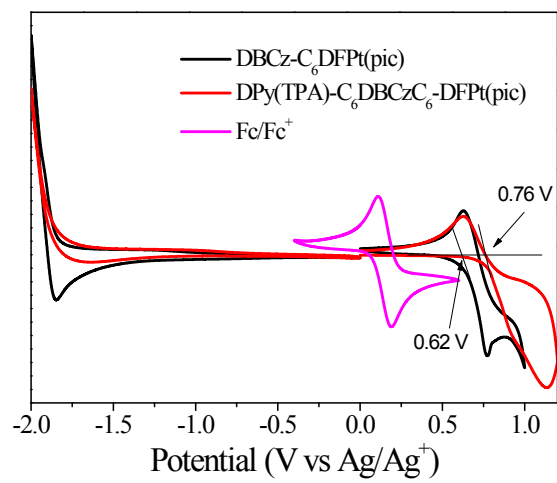


Figure S3.

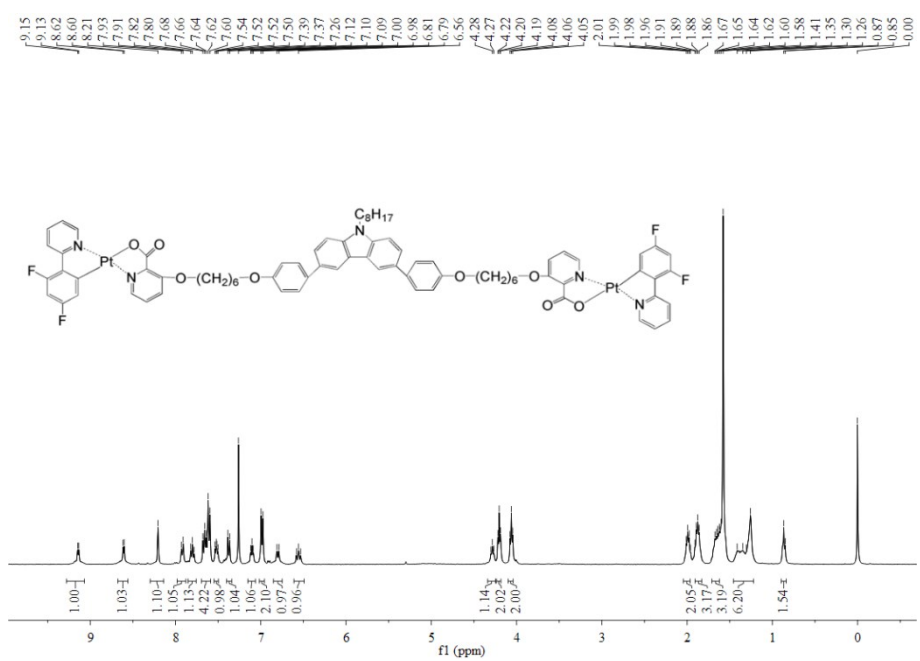
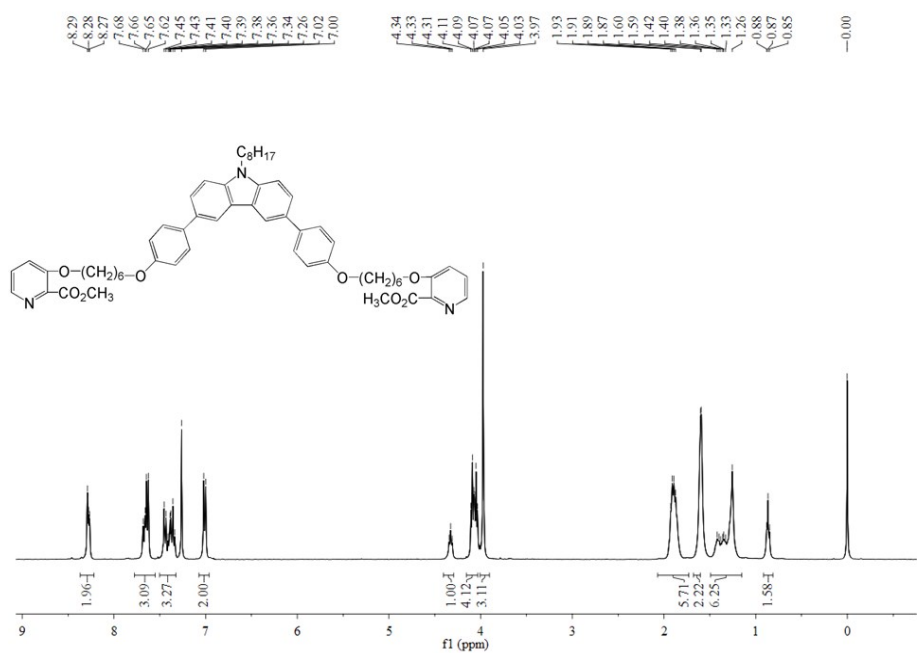


Figure S4

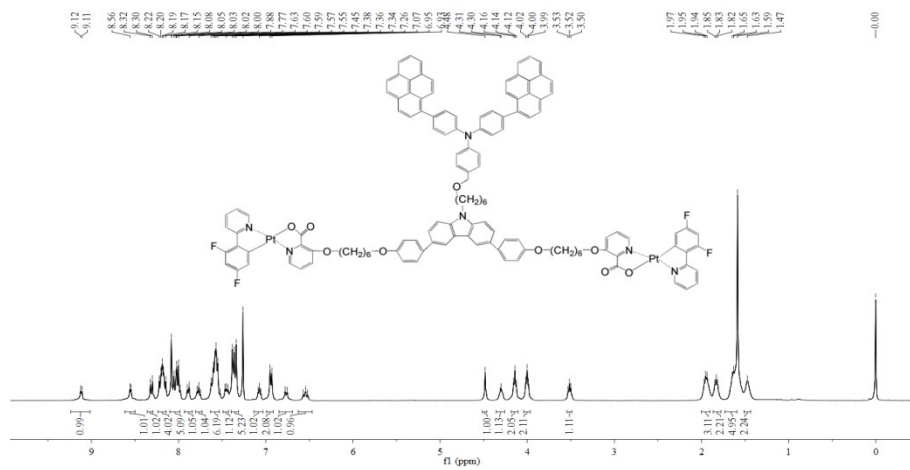
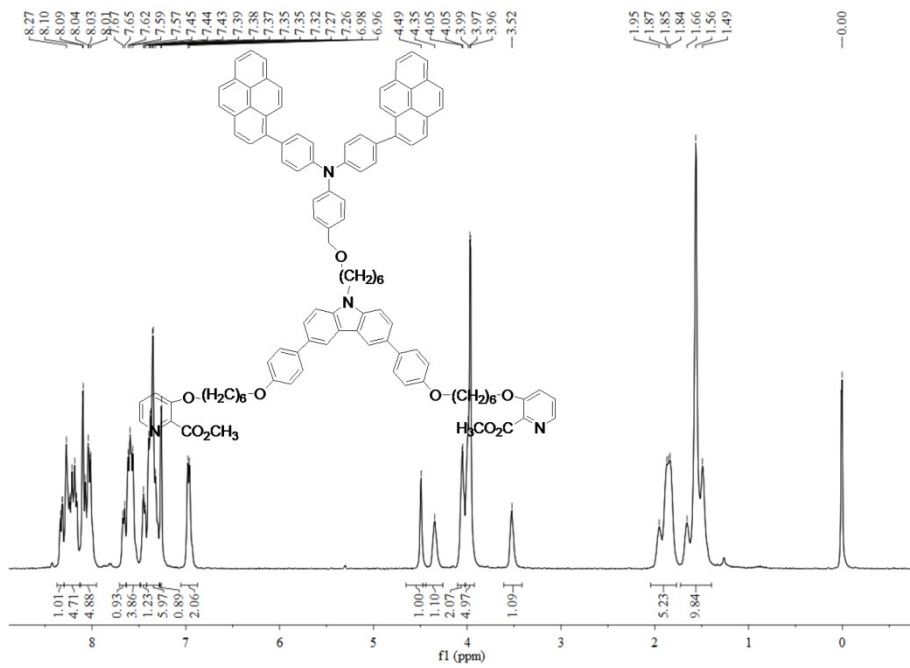


Figure S5.

