

Electronic Supplementary Information (ESI)

Stabilized lithium-ion battery anode performance by calcium-bridging of the two dimensional siloxene layers

Haruo Imagawa* and Hiroshi Itahara

Toyota Central Research and Development Labs., Inc.
41-1 Yokomichi, Nagakute, Aichi, 480-1192 (Japan)
E-mail: imagawa@mosk.tytlabs.co.jp

1. X-ray diffraction (XRD) data of Ca-siloxenes (Fig. S1)

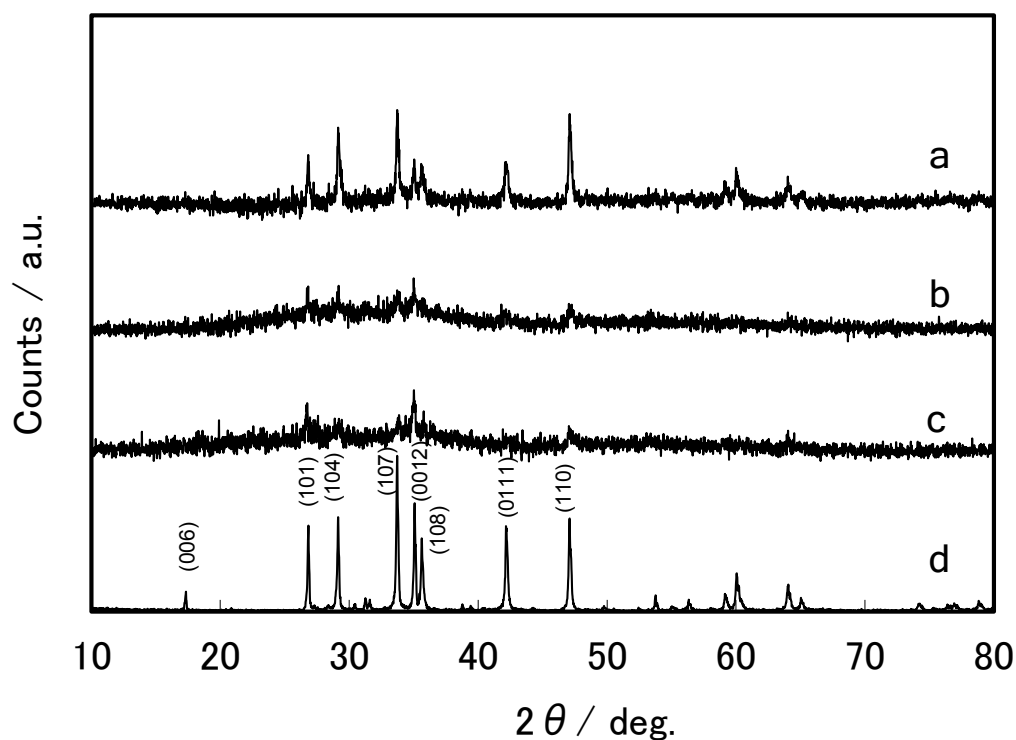


Fig. S1. XRD patterns of (a) CS2.5, (b) CS1.25, (c) CS0.25, and (d) CaSi₂.

2. N₂ adsorption desorption isotherm of CS2.5(Fig. S2)

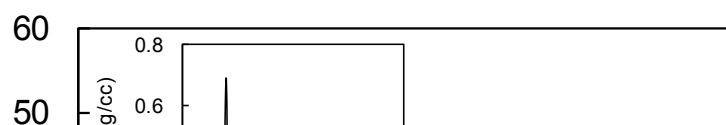


Fig. S2. N₂ adsorption-desorption isotherm of CS2.5. Inset: pore size distribution.