

Supporting information for

# Extremely bulky copper(I) complexes of [HB(3,5-{1-naphthyl}<sub>2</sub>pz)<sub>3</sub>]<sup>-</sup> and [HB(3,5-{2-naphthyl}<sub>2</sub>pz)<sub>3</sub>]<sup>-</sup> and their self-assembly on graphene.

Thomas F. van Dijkman,<sup>a</sup> Hans M. de Bruijn,<sup>a</sup> Tobias G. Brevé,<sup>a</sup> Bob van Meijeren,<sup>a</sup> Maxime A. Siegler<sup>b</sup> and Elisabeth Bouwman<sup>a\*</sup>

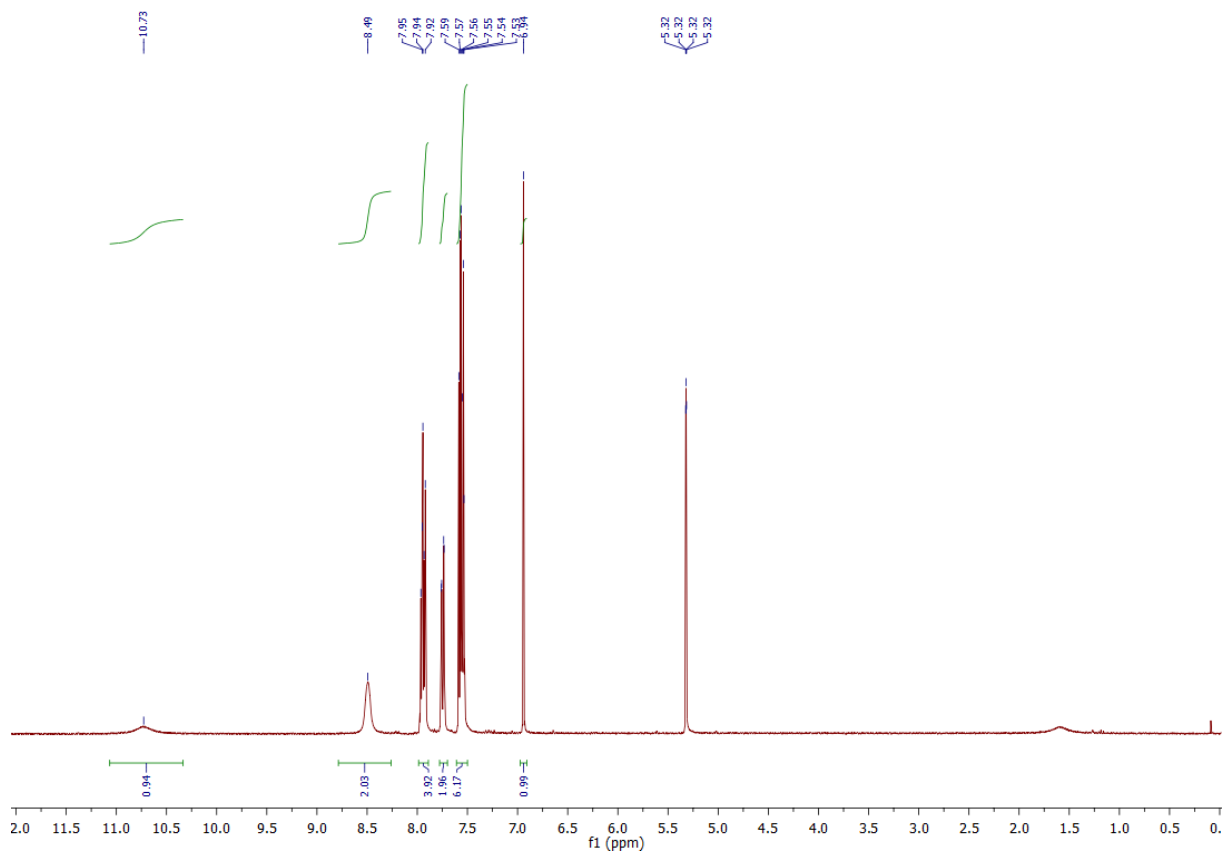
*a*, Leiden Institute of Chemistry, Leiden University, P.O. Box 9502, 2300 RA, Leiden, the Netherlands.

*b*, Department of Chemistry, Johns Hopkins University, MD 21218, Baltimore, USA.

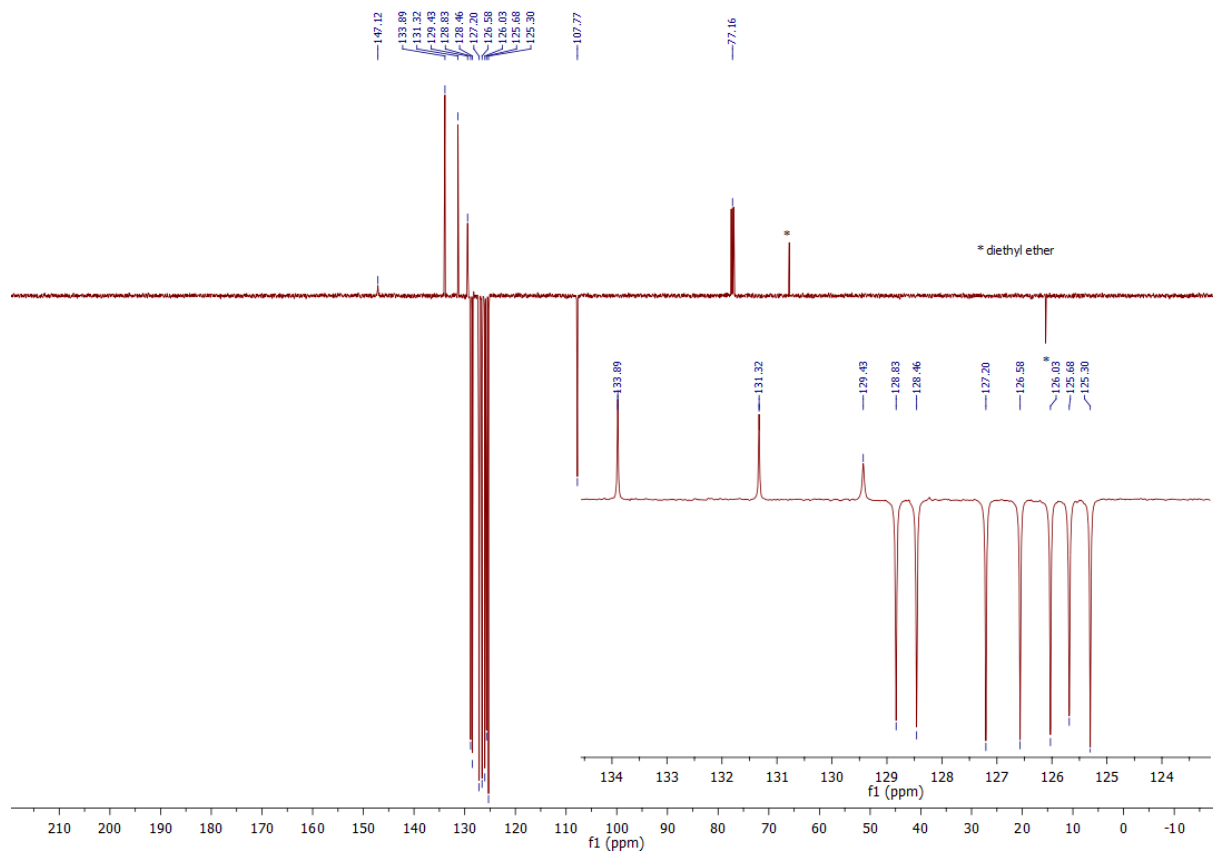
## NMR Spectra

<sup>1</sup> H – HPz <sup>(1Nt)2</sup> in CD <sub>2</sub> Cl <sub>2</sub> .....	2
<sup>13</sup> C – HPz <sup>(1Nt)2</sup> in CDCl <sub>3</sub> .....	2
<sup>1</sup> H – HPz <sup>(2Nt)2</sup> in DMSO- <i>d</i> <sub>6</sub> .....	3
<sup>13</sup> C – HPz <sup>(2Nt)2</sup> in DMSO- <i>d</i> <sub>6</sub> .....	3
<sup>1</sup> H – KTP <sup>(1Nt)2</sup> •DMPU in CD <sub>2</sub> Cl <sub>2</sub> .....	4
<sup>13</sup> C – KTP <sup>(1Nt)2</sup> in CD <sub>2</sub> Cl <sub>2</sub> .....	4
<sup>1</sup> H – NaTp <sup>(2Nt)2</sup> •DMPU in CD <sub>2</sub> Cl <sub>2</sub> .....	5
<sup>13</sup> C – NaTp <sup>(2Nt)2</sup> •DMPU in CD <sub>2</sub> Cl <sub>2</sub> .....	5
<sup>1</sup> H – [Cu(Tp <sup>(1Nt)2</sup> )CO] in C <sub>6</sub> D <sub>6</sub> .....	6
<sup>13</sup> C – [Cu(Tp <sup>(1Nt)2</sup> )CO] in C <sub>6</sub> D <sub>6</sub> .....	6
<sup>1</sup> H – [Cu(Tp <sup>(2Nt)2</sup> )CO] in CD <sub>2</sub> Cl <sub>2</sub> .....	7
<sup>13</sup> C – [Cu(Tp <sup>(2Nt)2</sup> )CO] in C <sub>6</sub> D <sub>6</sub> .....	7
<sup>1</sup> H – [Cu(Tp <sup>(1Nt)2</sup> )C <sub>2</sub> H <sub>4</sub> ] in C <sub>6</sub> D <sub>6</sub> at 343K .....	8
<sup>13</sup> C – [Cu(Tp <sup>(1Nt)2</sup> )C <sub>2</sub> H <sub>4</sub> ] in C <sub>6</sub> D <sub>6</sub> at 343 K .....	8
<sup>1</sup> H – [Cu(Tp <sup>(2Nt)2</sup> )C <sub>2</sub> H <sub>4</sub> ] in C <sub>6</sub> D <sub>6</sub> .....	9
<sup>13</sup> C – [Cu(Tp <sup>(2Nt)2</sup> )C <sub>2</sub> H <sub>4</sub> ] in C <sub>6</sub> D <sub>6</sub> .....	9

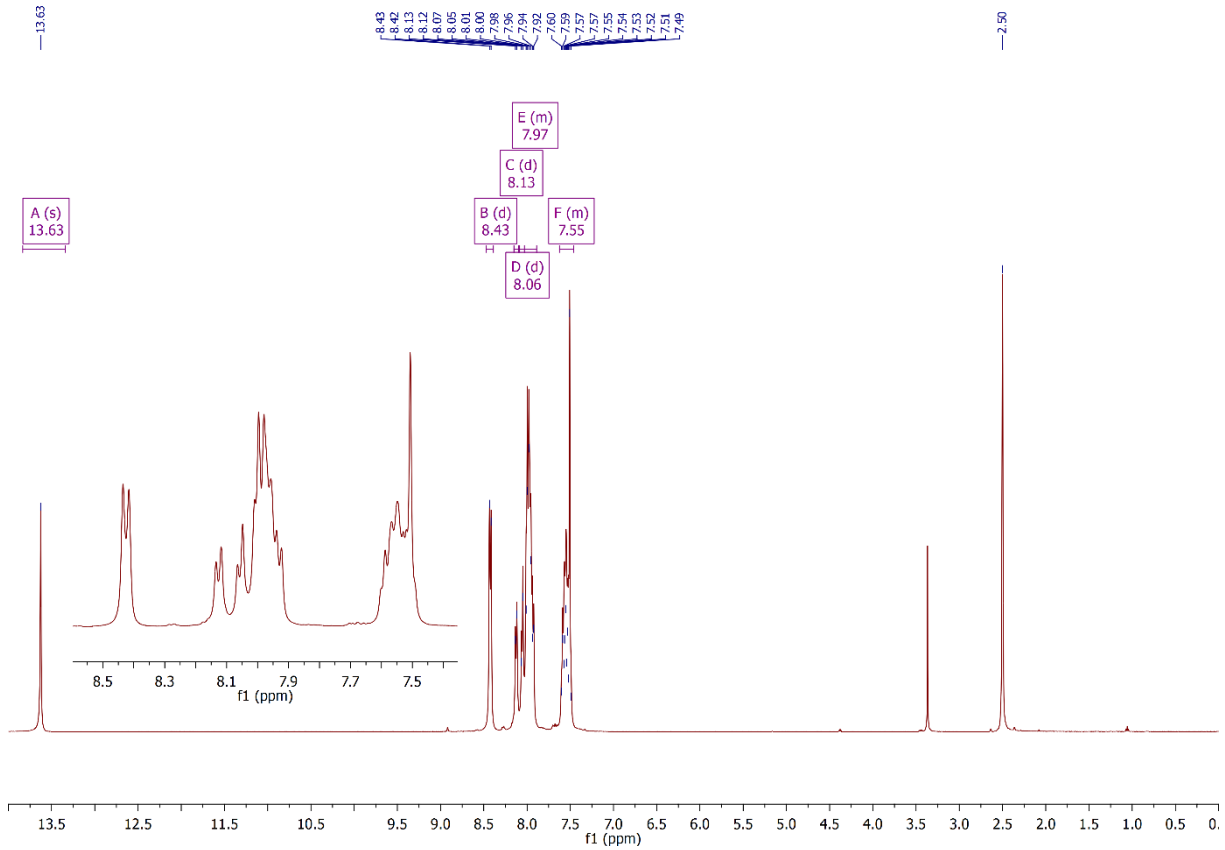
$^1\text{H} - \text{HPz}^{(1\text{Nt})2}$  in  $\text{CD}_2\text{Cl}_2$



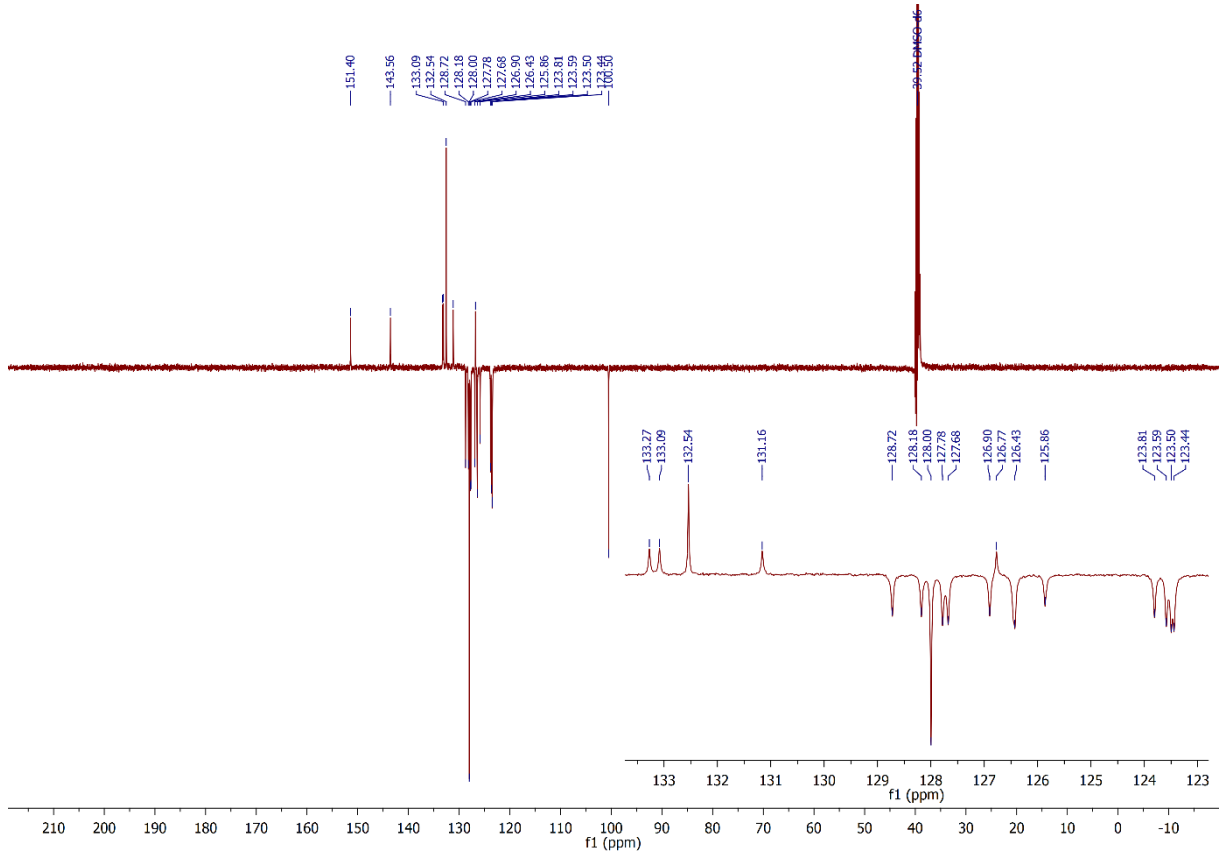
$^{13}\text{C} - \text{HPz}^{(1\text{Nt})2}$  in  $\text{CDCl}_3$



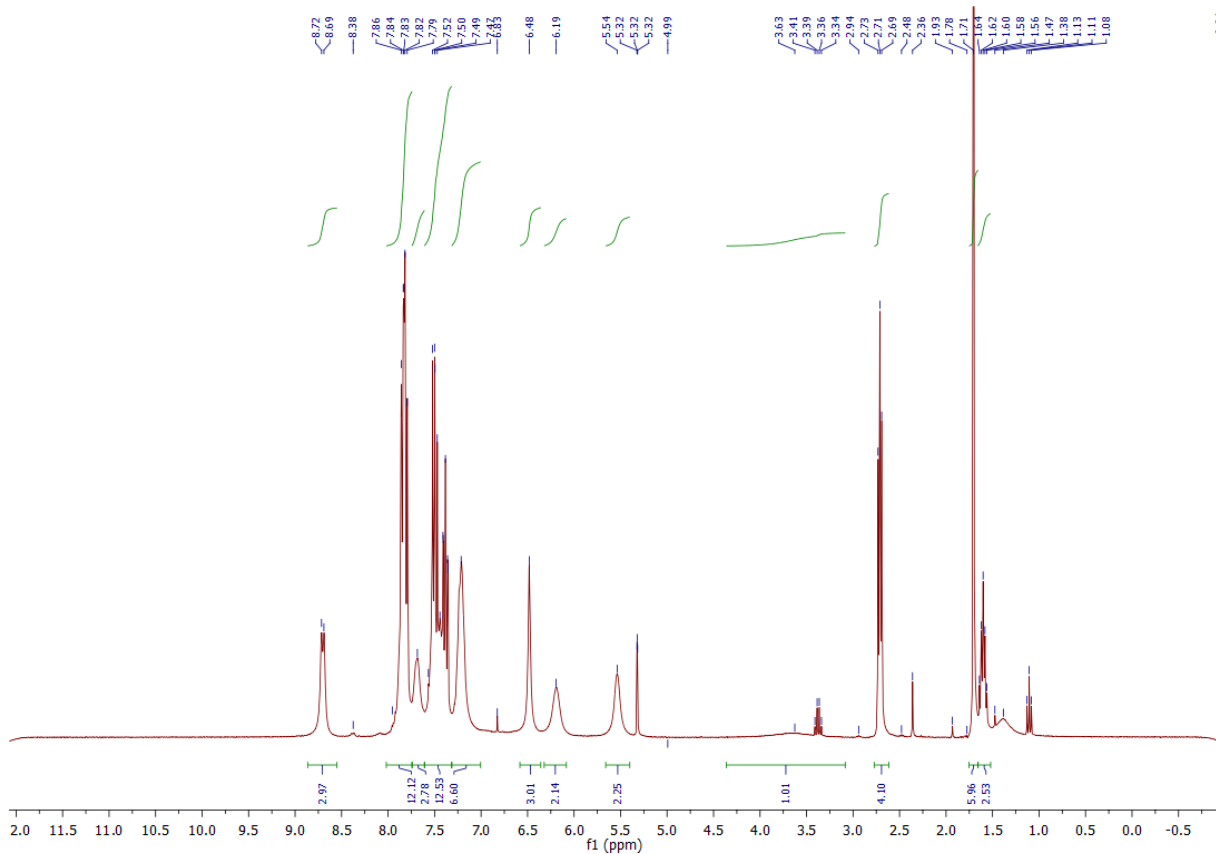
$^1\text{H} - \text{HPz}^{(2\text{Nt})2}$  in  $\text{DMSO-}d_6$



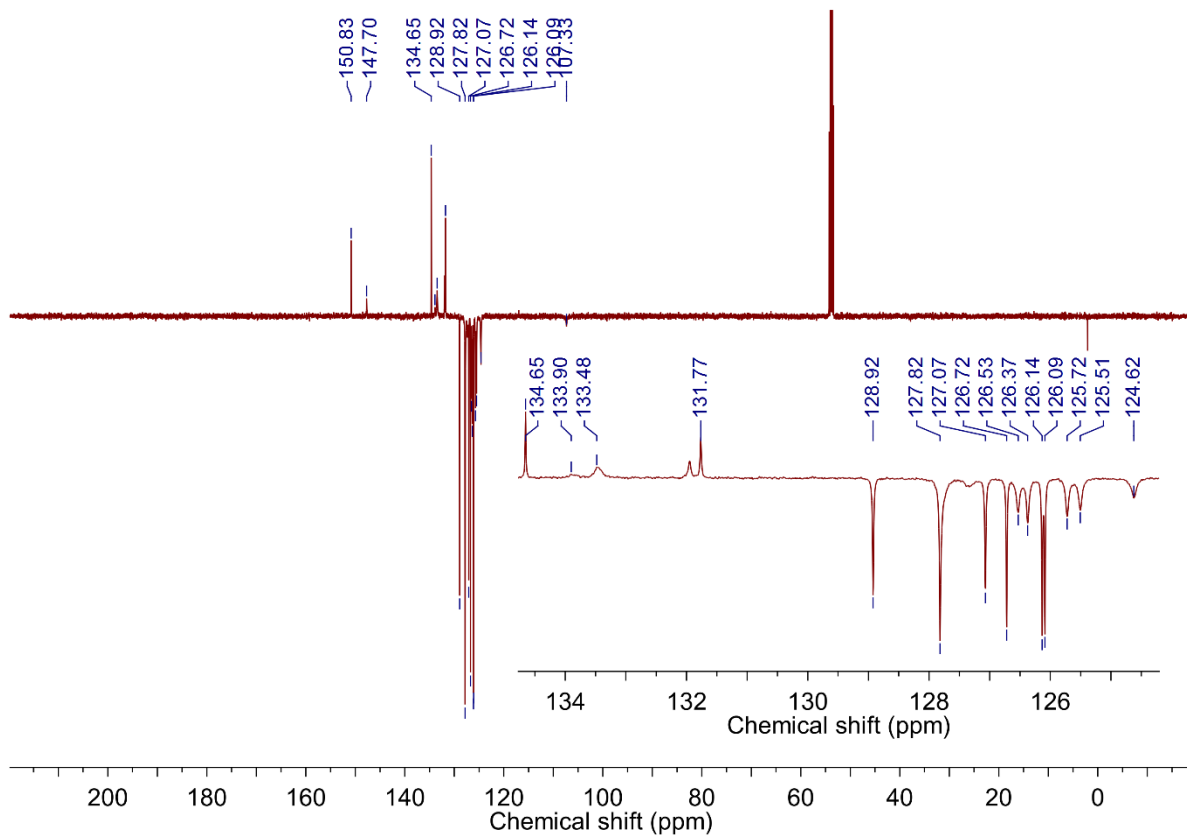
$^{13}\text{C} - \text{HPz}^{(2\text{Nt})2}$  in  $\text{DMSO-}d_6$



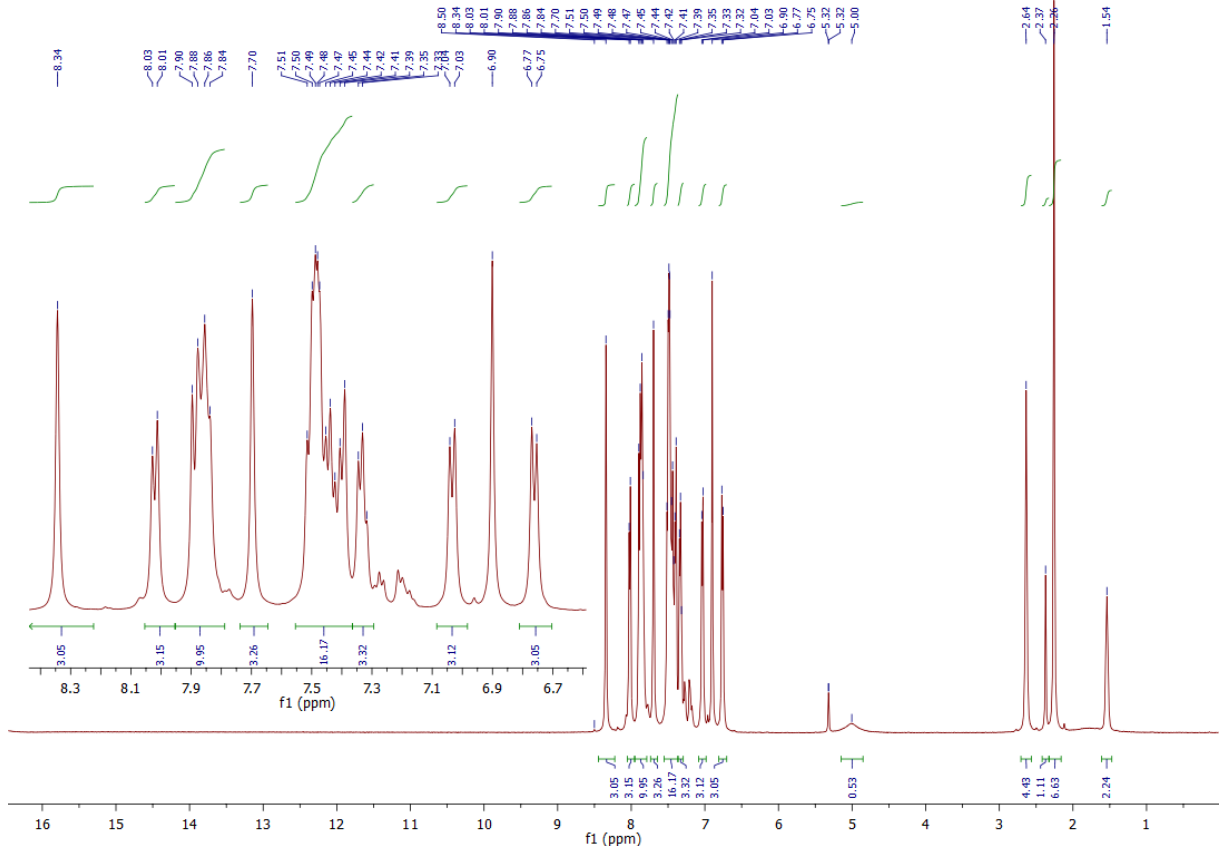
$^1\text{H} - \text{KTP}^{(1\text{Nt})2} \cdot \text{DMPU}$  in  $\text{CD}_2\text{Cl}_2$



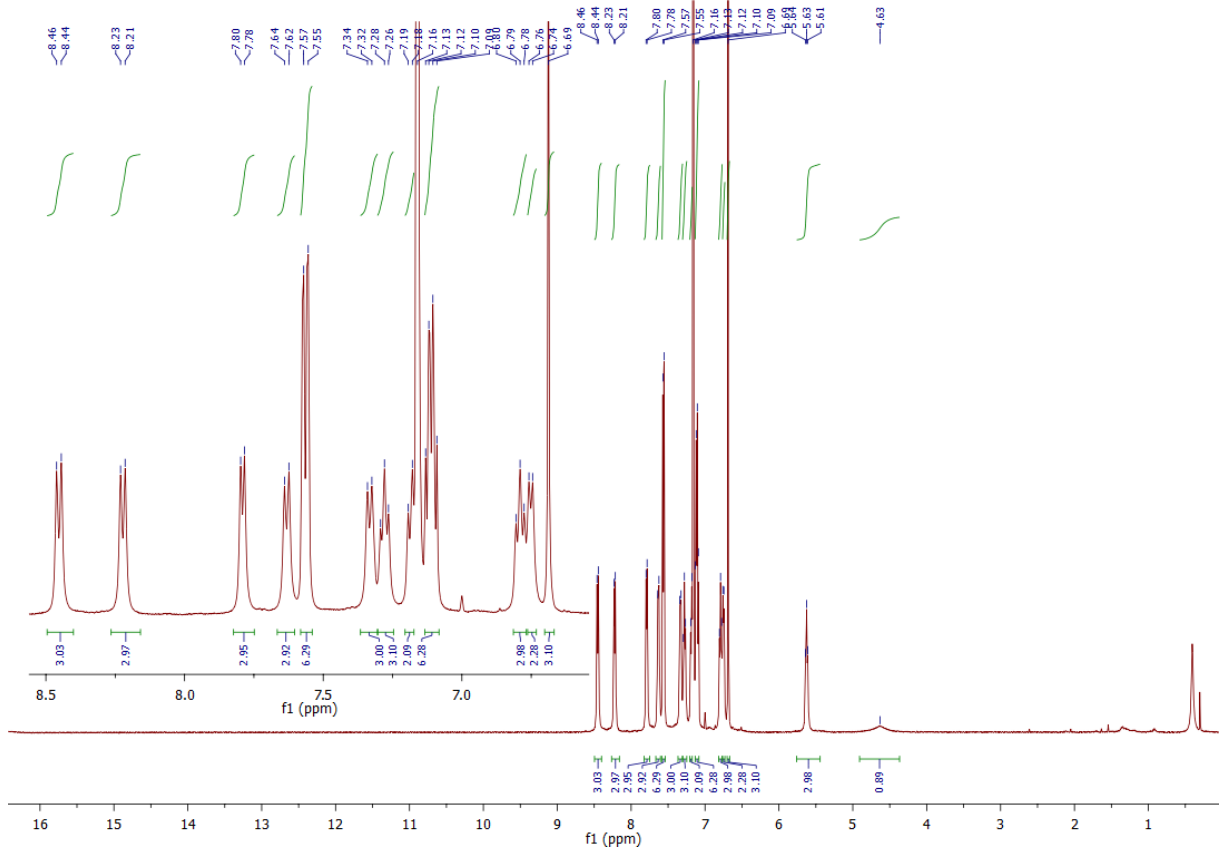
$^{13}\text{C} - \text{KTP}^{(1\text{Nt})2}$  in  $\text{CD}_2\text{Cl}_2$



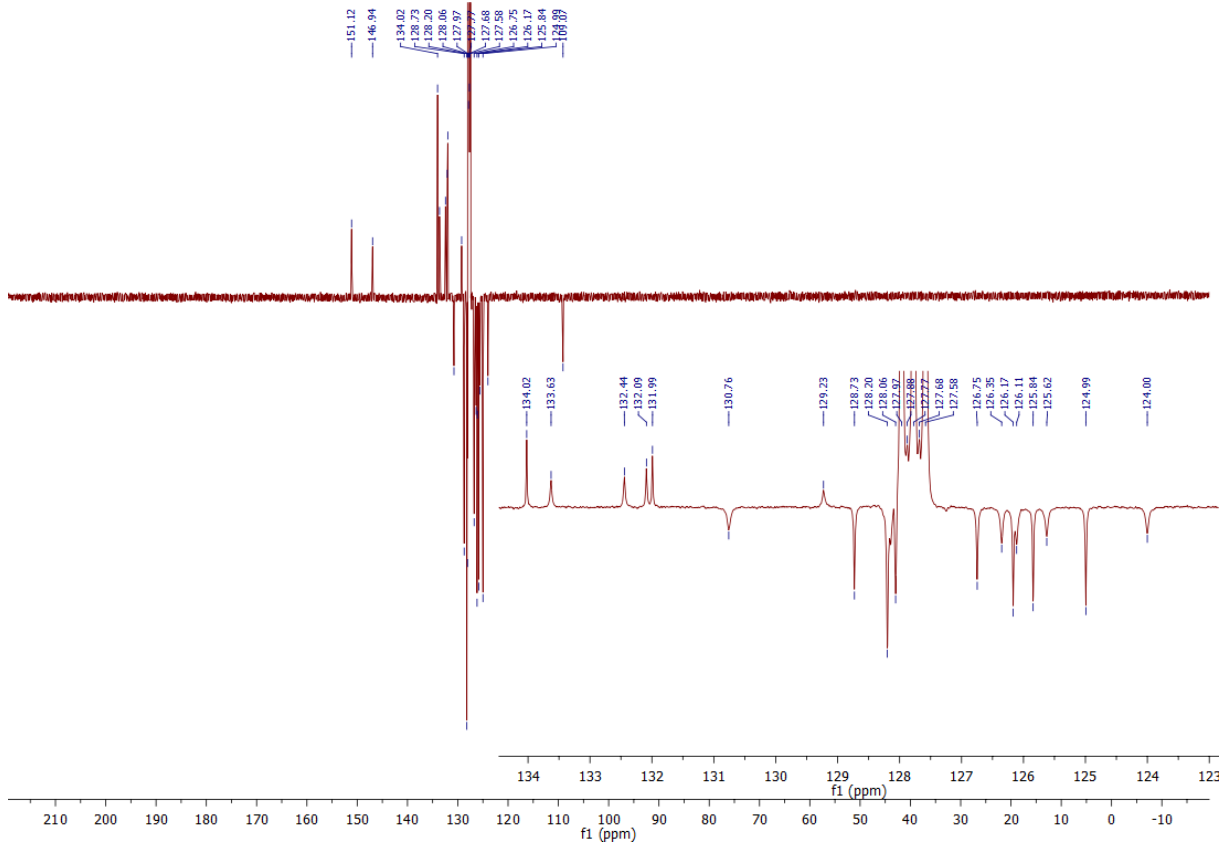
$^1\text{H} - \text{NaTp}^{(2\text{Nt})_2} \cdot \text{DMPU}$  in  $\text{CD}_2\text{Cl}_2$



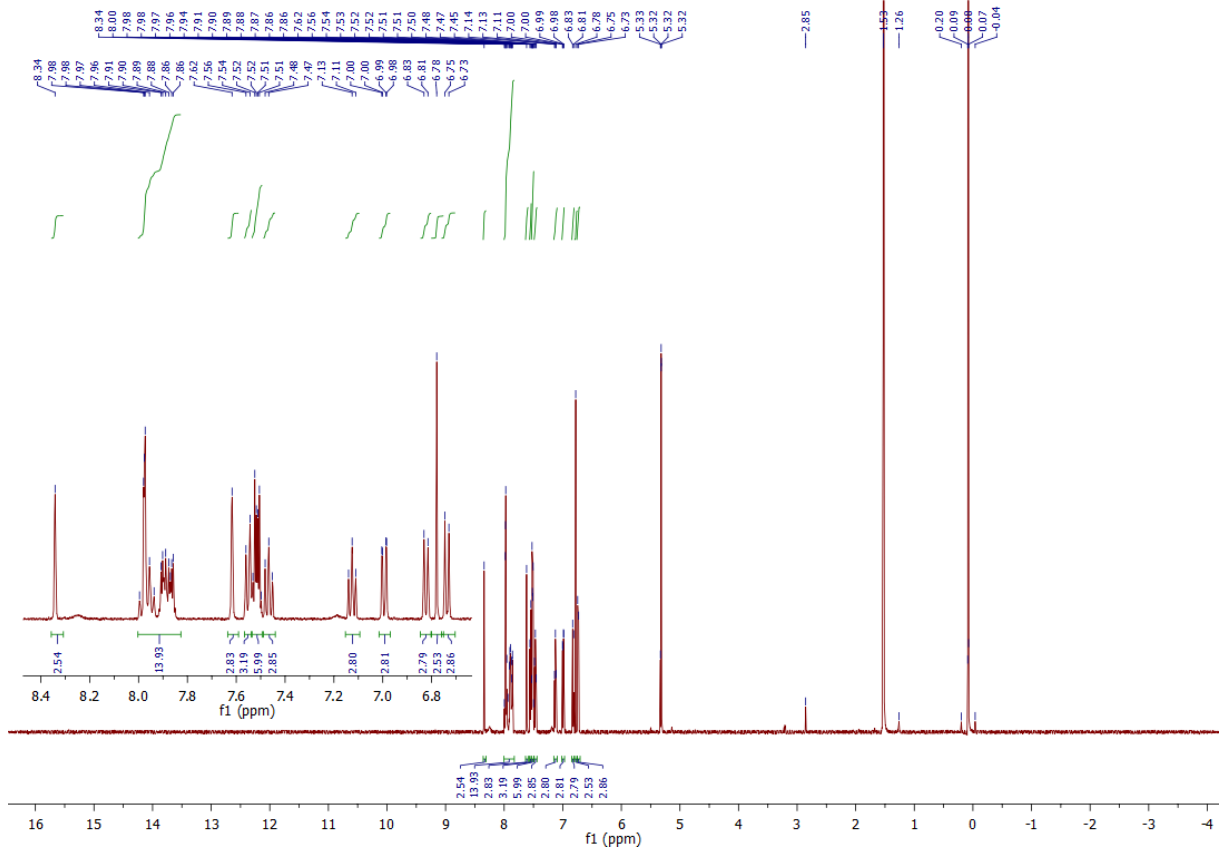
$^1\text{H} - [\text{Cu}(\text{Tp}^{(1\text{Nt})2})\text{CO}]$  in  $\text{C}_6\text{D}_6$



$^{13}\text{C} - [\text{Cu}(\text{Tp}^{(1\text{Nt})2})\text{CO}]$  in  $\text{C}_6\text{D}_6$



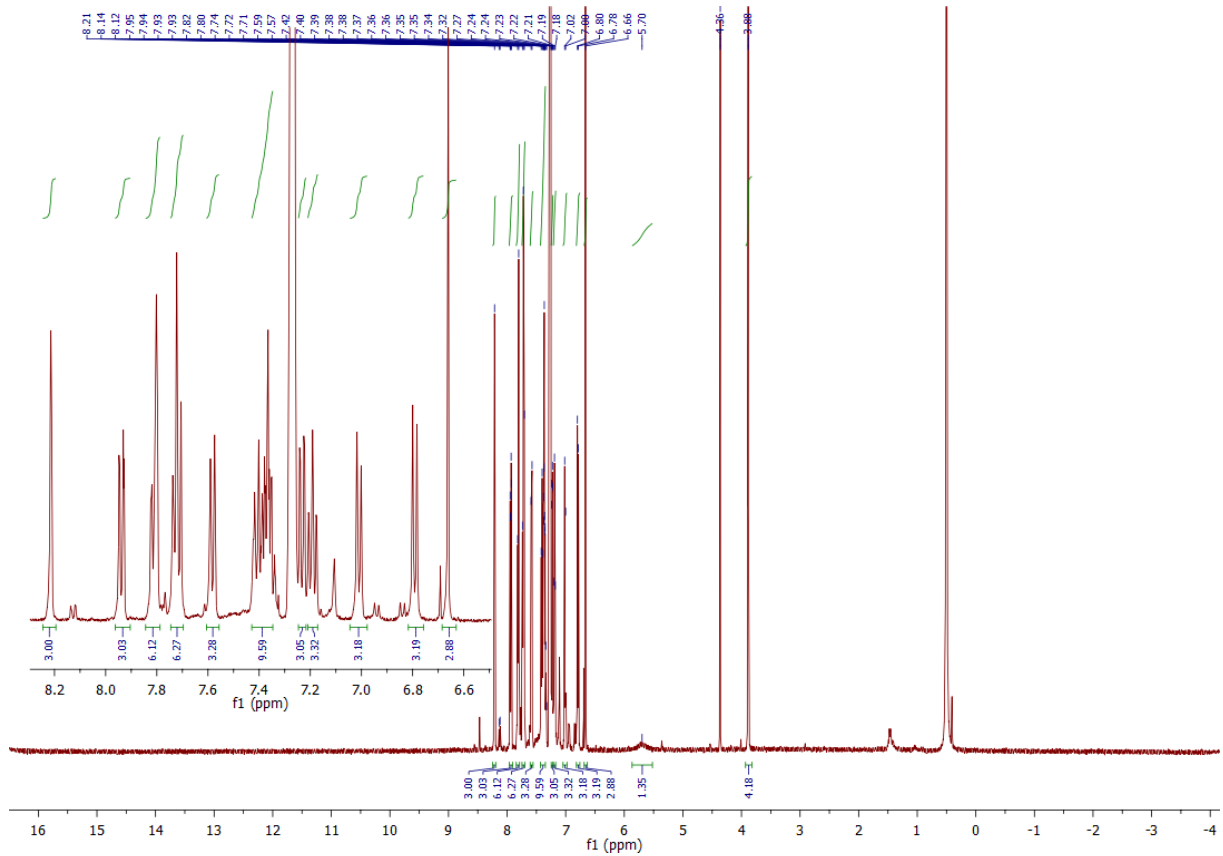
$^1\text{H} - [\text{Cu}(\text{Tp}^{(2\text{Nt})2})\text{CO}]$  in  $\text{CD}_2\text{Cl}_2$







$^1\text{H} - [\text{Cu}(\text{Tp}^{(2\text{Nt})2})\text{C}_2\text{H}_4]$  in  $\text{C}_6\text{D}_6$



$^{13}\text{C} - [\text{Cu}(\text{Tp}^{(2\text{Nt})2})\text{C}_2\text{H}_4]$  in  $\text{C}_6\text{D}_6$

