

Supporting Information

Application of the CANARY Event Detection Software for Real-Time Performance

Monitoring of Decentralized Water Reuse Systems

Aaron Leow, Jonathan Burkhardt, William E. Platten III, Brian Zimmerman, Nichole E.

Brinkman*, Anne Turner, Regan Murray, George Sorial and Jay Garland

*Corresponding author phone: (513)569-7315; email: brinkman.nichole@epa.gov. Current address: 26 W. Martin Luther King Dr. MS 587 Cincinnati, Ohio 45268.

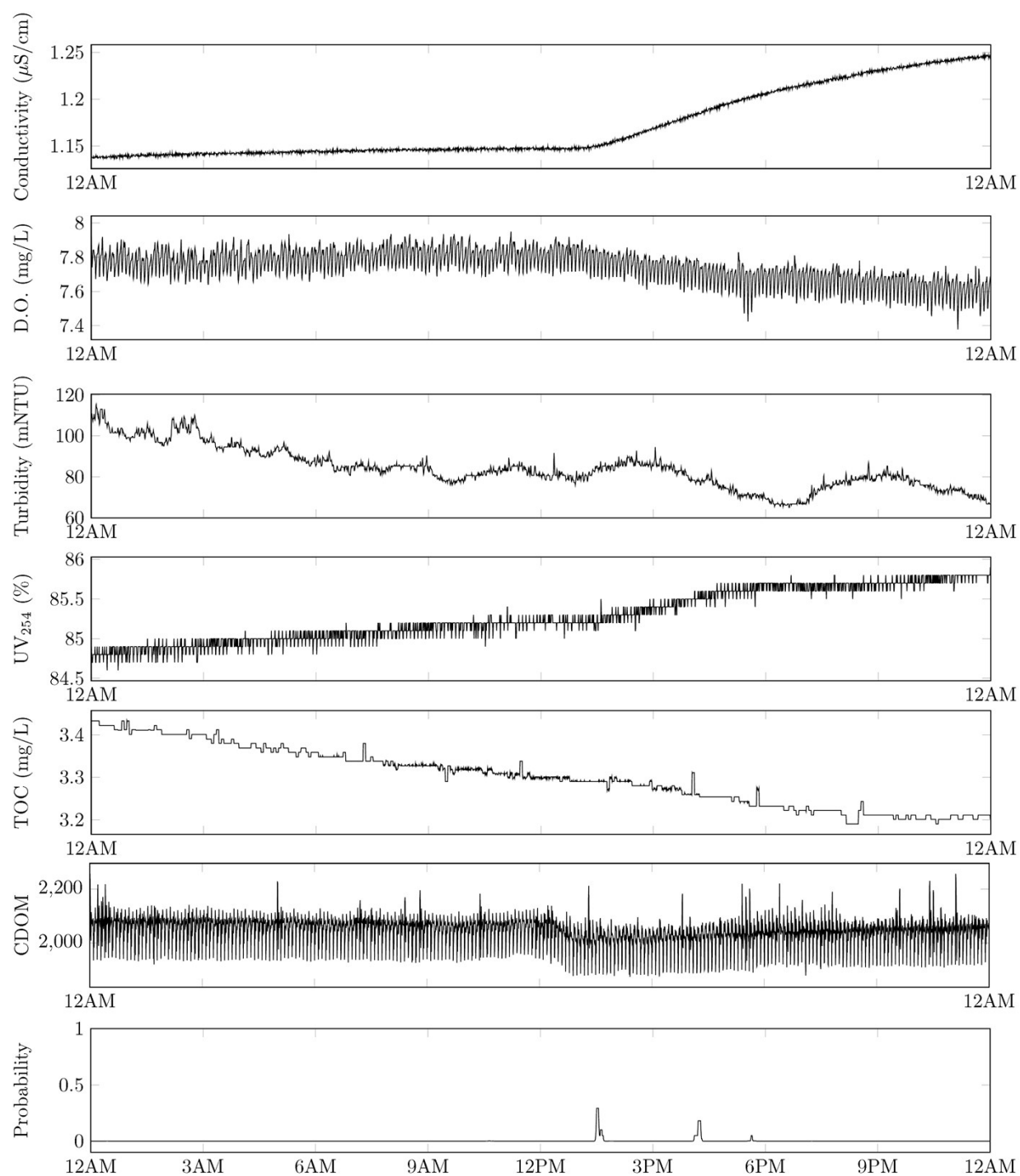


Figure S1. Sensor response and CANARY assessment during natural operating conditions without any alarms.

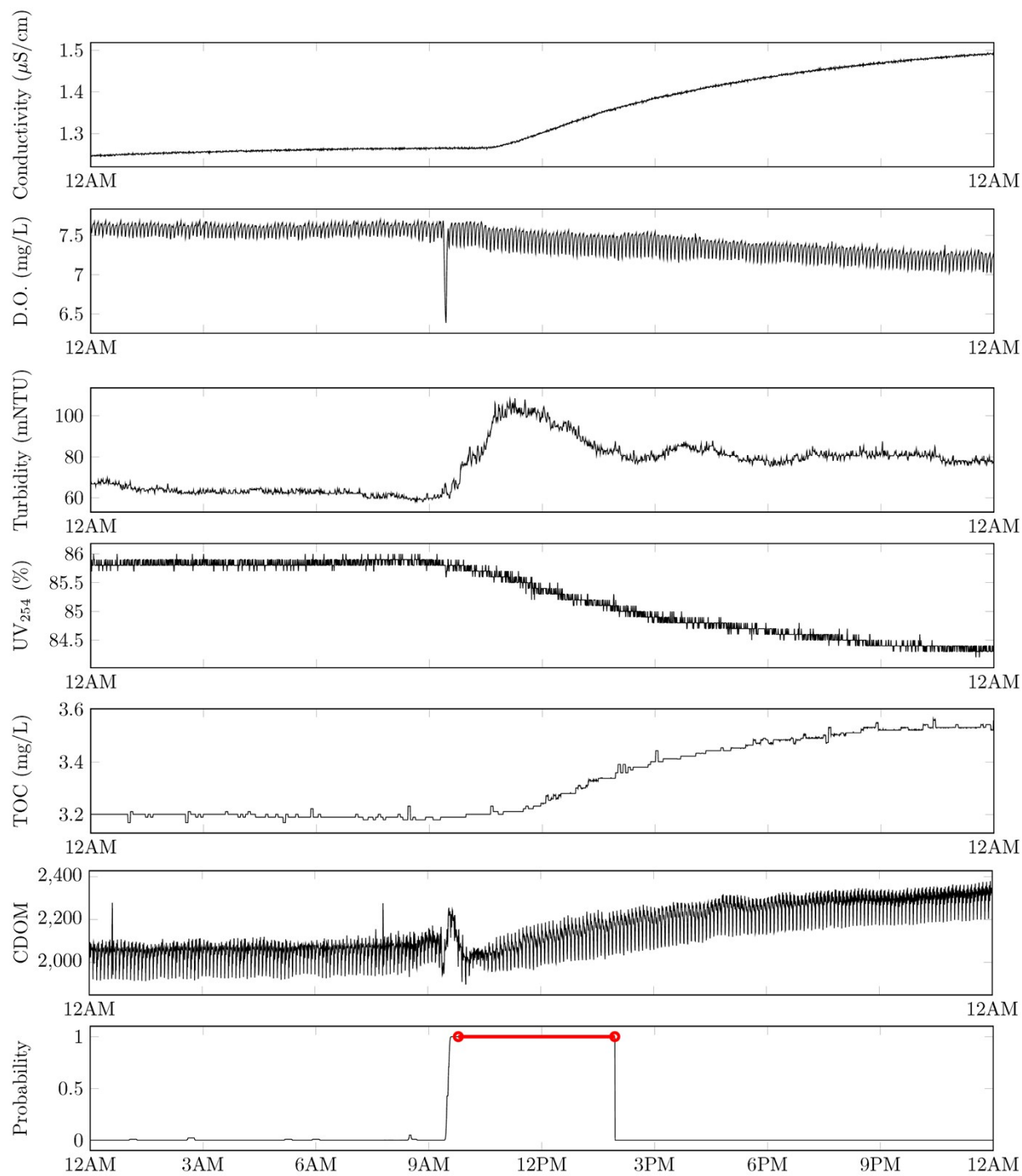


Figure S2. Sensor response and CANARY assessment during natural operating conditions with an alarm due to a feed composition change (30% increase in the influent COD).