

Supplementary Information for

**Selective co-production of acetate and methane from wastewater during
mesophilic anaerobic fermentation under acidic pH conditions**

Xin-Rong Pan^{1,2,3}, Yun-Kun Wang^{1,2}, Wen-Wei Li^{1,2,*}, Yan-Shan Wang^{1,2}, Xu
Wang^{1,2}, Yun Cheng^{1,2}, Yi-Kun Geng^{1,2}, Chen-Xuan Li^{1,2}, Paul K.S. Lam^{2,3}, Han-
Qing Yu^{1,2,*}

¹CAS Key Laboratory of Urban Pollutant Conversion, Department of Chemistry,
University of Science and Technology of China, Hefei, China

²USTC-CityU joint Advanced Research Center, Suzhou, China

³State Key Laboratory in Marine Pollution, Department of Biology and Chemistry,
City University of Hong Kong, Hong Kong SAR, China

***Corresponding authors:**

Prof. Wen-Wei Li, Fax: +86 551 63601592, E-mail: wwli@ustc.edu.cn;

Prof. Han-Qing Yu, Fax: +86 551 63601592, E-mail: hqyu@ustc.edu.cn

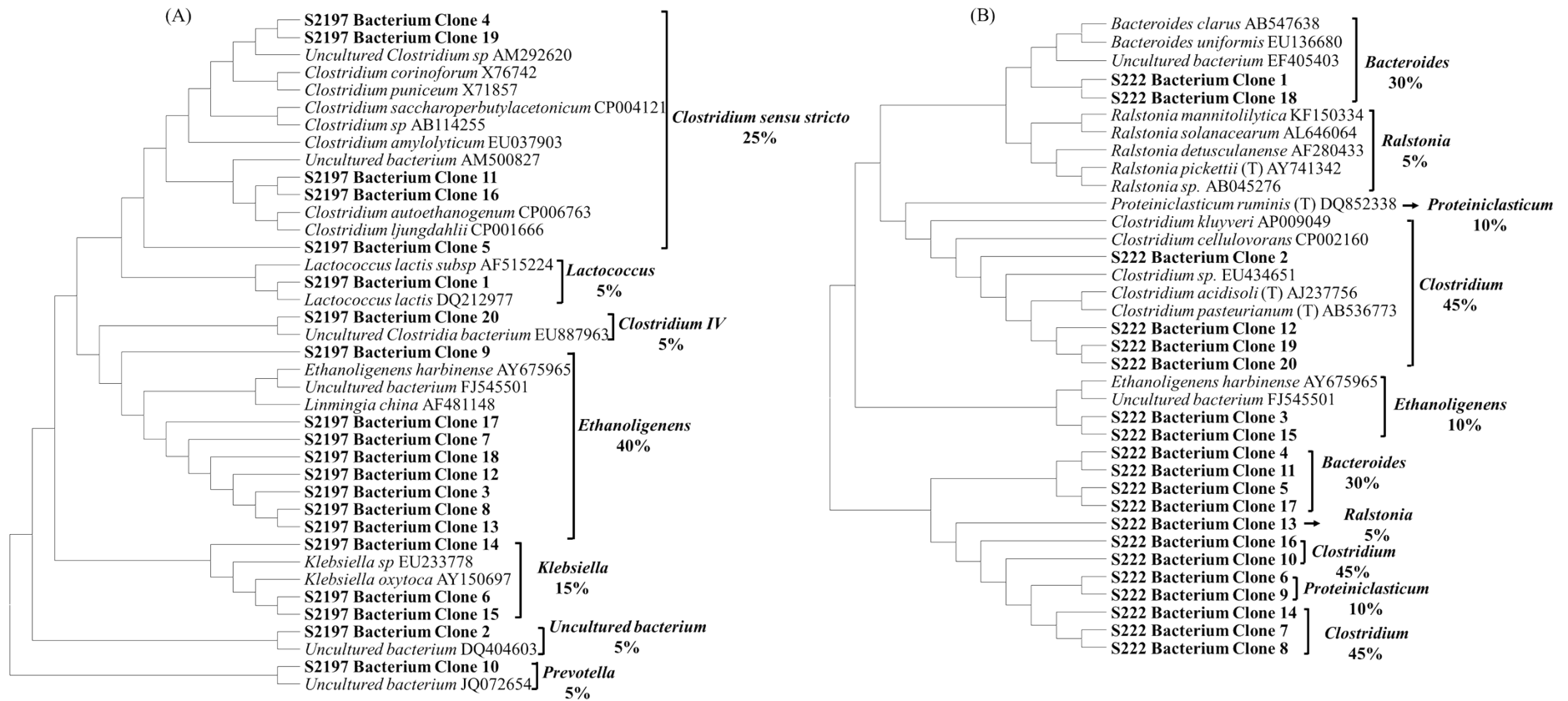


Fig. S1. Bacteria phylogenetic tree of anaerobic sludge (A) pH 5.0 and (B) pH 4.0.

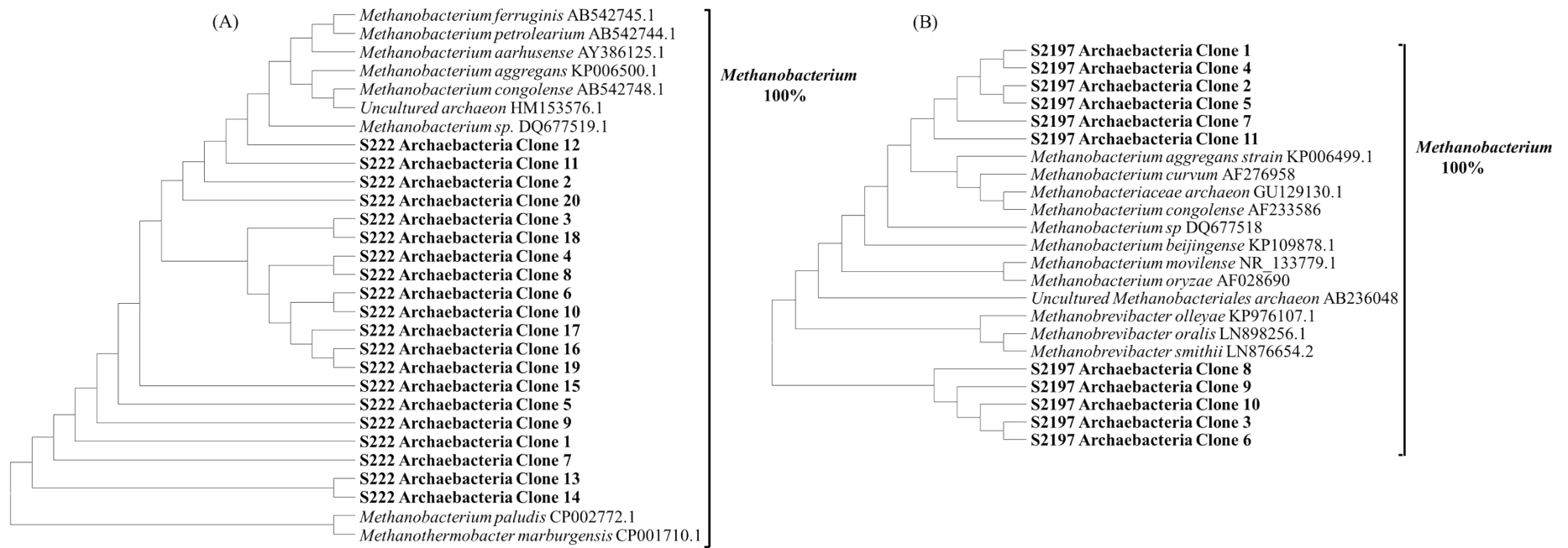


Fig. S2. Archaea phylogenetic tree of anaerobic sludge (A) pH 5.0 and (B) pH 4.0.