

Supplementary Figures

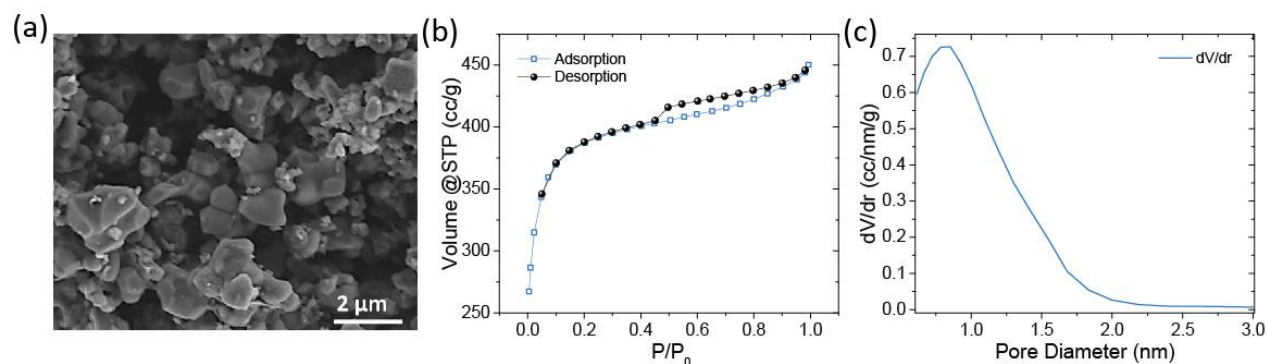


Figure S1. A SEM image of the anisometric activated carbon (YP-50 Kuraray) used in the suspension electrode (a). The material exhibits a type IV isotherm with a small hysteresis from gas sorption experiments (b) and is mainly microporous in nature with a small volume of mesopores >2 nm (c).

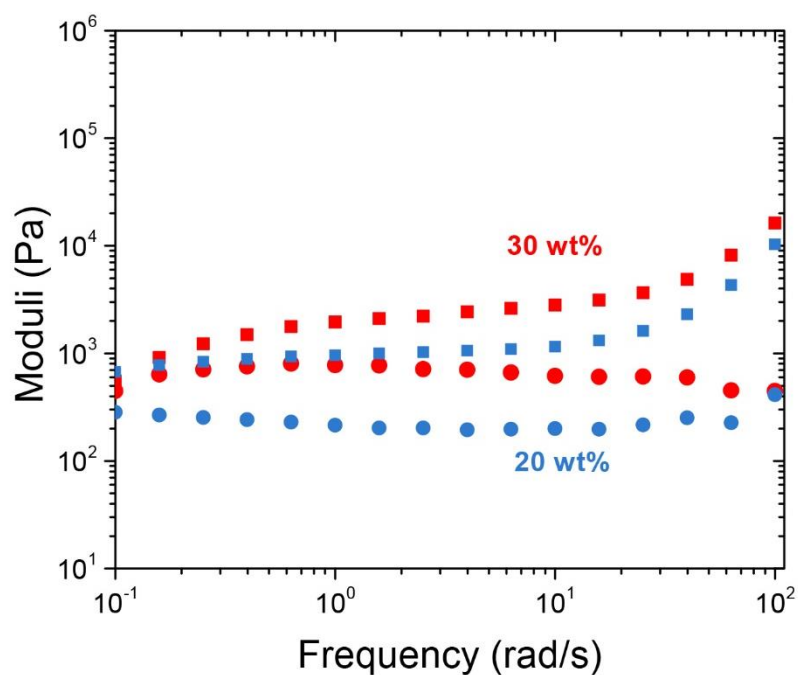


Figure S2. Rheology of carbon suspension electrodes in water (without the presence of a salt). The squares represent the elastic modulus and the circles represent the viscous modulus.

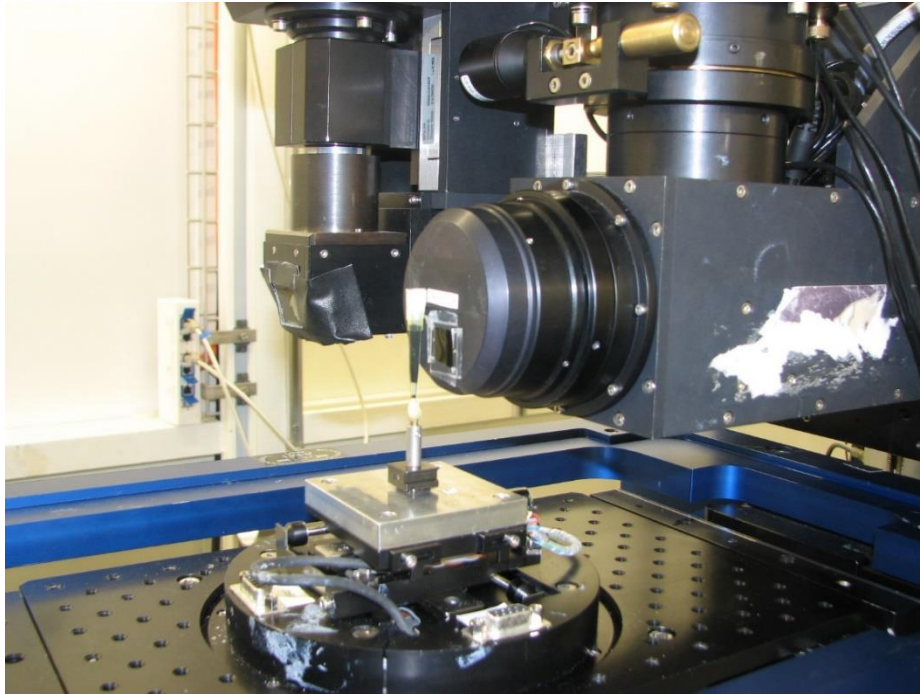


Figure S3. Photograph of the experimental set-up.