

Supporting information:

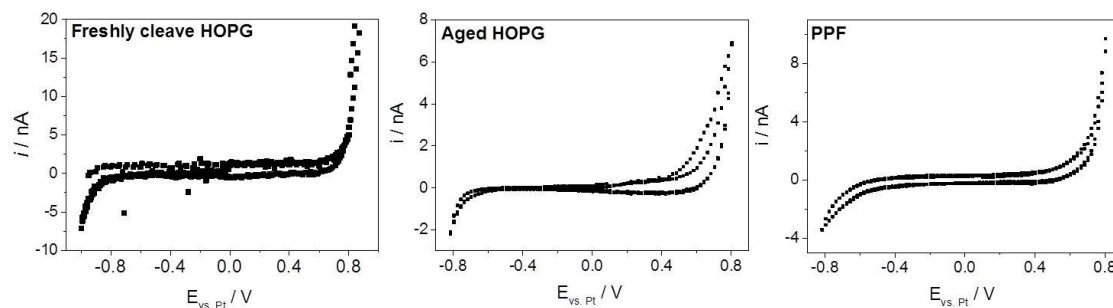


Fig. S1: Cyclic voltammetric response in 6 M LiCl(aq.) for a) fresh HOPG, b) aged HOPG and c) PPF.

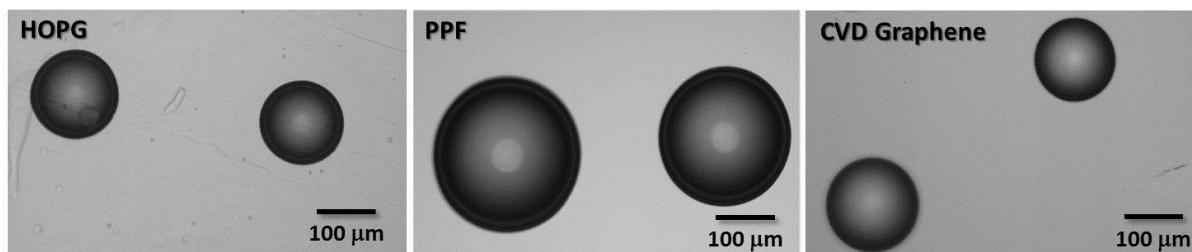


Fig. S12: Optical images of droplets recorded on carbonaceous surfaces, a) basal plane HOPG, b) iso-propanol-washed and heat-treated PPF and c) CVD graphene on SiO<sub>2</sub>.

Supporting information movie files – time-dependent wetting responses for aqueous electrolytes on bilayer and trilayer (X and Y??) mechanically exfoliated graphene, cycled three times (vertex potentials +0.8 V and -1.0 V, scan rate 0.3 V s<sup>-1</sup>).