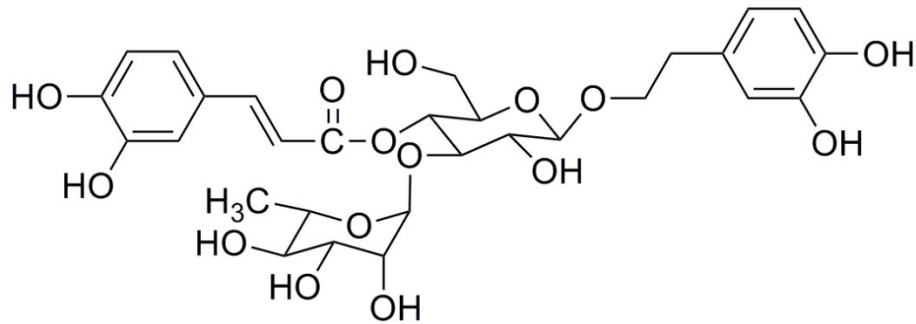


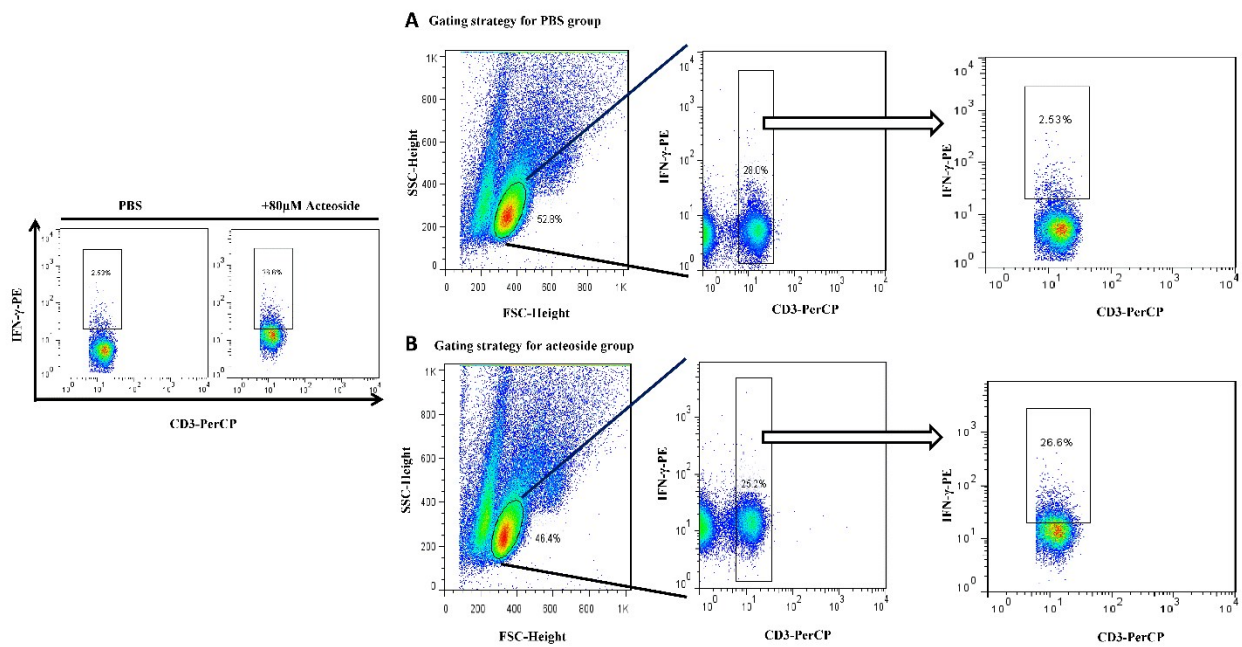
# **Supporting Information**

## **for**

**The Antiviral Effects of Acteoside and the Underlying IFN- $\gamma$ -Inducing Action**



Supporting Information Figure 1: Chemical structure of acteoside



Supporting Information Figure 2: Gating strategy used to identify  $\text{IFN-}\gamma^+\text{-CD3}^+$  T cells. Representative flow cytometry plots from the mouse lymphocytes after different treatment (A, PBS; B, acteoside). Lymphocytes were live gated during acquisition using the side and forward scatter dot plot display. Furthermore, by using the positive gating strategy, CD3-positive lymphocyte population was gated. Finally, the  $\text{IFN-}\gamma^+\text{-CD3}^+$  population was further identified.

Mouse INF-gamma promoter

TCTGAGATCCCATCTTACATCTGTCAGAATGTCTAAGATCAATAAGACACGTGACAGCTCACACTGGTGT  
GGAGCAAGGGGAACACTCTCCTACTGAGGTTGGTAGTGCAAATATCACTTTTAAAAAATTAATAGAGAAC  
ATAGAACGGTCCCCGTCATCAGGTGTTAGCTAACGAGACCACACCATTTTCTAGCATTAAATGGTAAATTA  
CATTTAATAAAAAAGCTGATTTCTTCAAAGTAGAAGGAATAGCATTGGAAGTGTAAAAAACTTGAGGG  
CAATAACTCAAAGTATTCCCCCCCCCCCCAGAAAGGGTTTCACTGTGTAGCTCTGGTTATCCTGGAA  
CTCACTCTGTAGACCAGGATAACCTCAAATTCACAGAGATTGCTGGCTTCTGTCACCTGAGTGCTGGGAT  
TAAAGGTATGAGTTACCACGACCCTGCTAGATTTTTTTTTTAAGACAGATTCTCATGATTCTTAACTGG  
CCTTCAAGTCTCCAGCAGCAGAAGGTGACCTCGCACTCATGATCATCTTACCTCTGTTTCCATCTGTATT  
TCATGCCTATTTAAGTCAGGGTTTTTATACAAGCACTCTACCAACCAAGAGATGTTCTGACTGTCAA  
ACAGAGATTCTTAGGTAAACATTCAAATGAATATTTGTGTGTGTGTGTGTGTGTTGTTTGTGTATAAATCTT  
TATGCTTATGTATTTGAGGGAAATAAATTGTGTCACAGAAGCAATGAAACACTTTCTGGTTTTAAGGAAA  
TTAGTGGGCACTGGGATGGGGGTAGGGGGCATGCATAGTTACCTCGTATATGAGACTGGGGAAATTGAGA  
ACCCATGAAGCATAGAAACAAAGTGTAGCCCTGCCAGAGGATAAAGTCTGATTTGAAGCTGGAGGCTT  
GGGGGAGAACAAAACAGAGGATGGTTTGCATCTGGGTCAAGATAACTGGGTACCACTCTGAGATGCTCA  
GATGAGGGAAAGGGGGCACATGGCCAAAGGAAGTGCACGAACAAGCTGCATAGCGTTGTTAAACATCTGA  
CATTGCCAAATAACCATCAAGTTTTAATTGAGCCACTAGGAATGCCGGAAGAATTCTCTCAACTTTCCA  
TGGAGCATTGTTGAGCCTTTGGCTGAAGTCCGGAAGAAAATGCTAGTGTTAAGCTCACTGTATAAATG  
TGGAAACTGAGTCACAGATCATAAAGATGCTGACTCAAGACCCCGAGGCTAGAATATGAATGGTTCAAGT  
CTGCACCCATAGCCACTGTGTAATGTTAATGAATACAGGAAAGGCAGGGATGAATACACGTGGGCTGGCA  
CTGAAGAGCAGAGGGCCTCCTGCCCATCCTCAAGGATCGAATTTTATAGATAAGTTACCAAAGACAGAG  
AAGGAACTTTTGTGTTGAACTTGTGGGGGAAACAATTTTTCAGTTATTAATCCTTATTTGGGACAAG  
TGTGTGTCTAGTGCTGGACTAGTCATTGGGATAGCCTTAGCCACATGTGGGTATGAGAGTTAGAAACATG  
GCTAATCCTGAAGTGATTTCTGCTGTGTATATAGGATAGCCACTAGGCTTTAAATATTTAGTGGCAGAGG

AATTGAAACTCTTATTCATCATAAATCTTGATACACATTGATACCTTGGGTGTGTTGAGTGAAATACAAT  
ATCTAATGAAGTATTCTTGCATTTTACTTTTTATTTCATTTTGCATTTTTTCCTTTTATTAATGGAGGA  
ACTAGATGATTTTTATTTACCTATGTGGTCTGCCTTTTCTCTTTCTGGGCACGTTGACCCTGAGTGATT  
TGTAGTAGGTATTTACTAATCACCTCCATTGAAGGGCTTCCTCACCACATTGGCTTTTTAACCATACCC  
TTTCCTTGCTTTTCTGGTCATTTGCAAGAAAAGTTTGAAAAGGCTTCCCCCATTGCATGGTTTGAGAAGC  
CCAAGAGTTTCCTCATGGTTTGAGAAGCCCAAGAGTTTCCTTTTATTCAGCCGTCCCCAACCAAAACAA  
AGGCTCCCTGTGCTGTGCTCTGTGGATGAGAAATTCACATTACAAGGGCAAAAAGGGGGAGACGTAAAAG  
CAATTTCCAGCCCCACCCCAAATGGTGTGAAGTAAAAGTGCTTTCAGAGAATCCCACAAGAATGGCACA  
GGTGGGCACAGCGGGGCTGTCTCATCGTCAGAGAGCCCAAGGAGTCGAAAGGAAACTCTAACATGCCACA  
AAACCATAGCTGTAATGCAAAGTAACTTAGCTCCCCCACCTATCTGTACCATCTTAAAAAAAAAAAAA  
AACCAAAAAAAAAACTTGTGAAAATACGTAATCCCGAGGAGCCTTCGATCAGGTATAAACTGGAAGCCAG  
AGAGGTGCAGGCTATAGCTGCCATCGGCTGACCTAGAGAAGACACATCAGCTGATCCTTTGGACCCTCTG

**Supporting Information Figure 3:** Mouse INF-gamma promoter.

**Table 1.** Primer sequences for RT-PCR

Genes	Sequence
IFN- $\gamma$ _forward	GCCAAGACTGTGATTGCGGGGTTGTATCT
IFN- $\gamma$ _reverse	TAAAGCGCTGGCCCGGAGTGTAGACA

**Supporting Information Table 1:** Primer sequences for RT-PCR.