

Fig. 1S. HPLC chromatograms of standard (A) and PPP-40 (B) recorded at 280 nm (peak 1: catechinic acid, peak 2: procyanidin B₂, peak 3: epicatechin, peak 4: taxifolin)

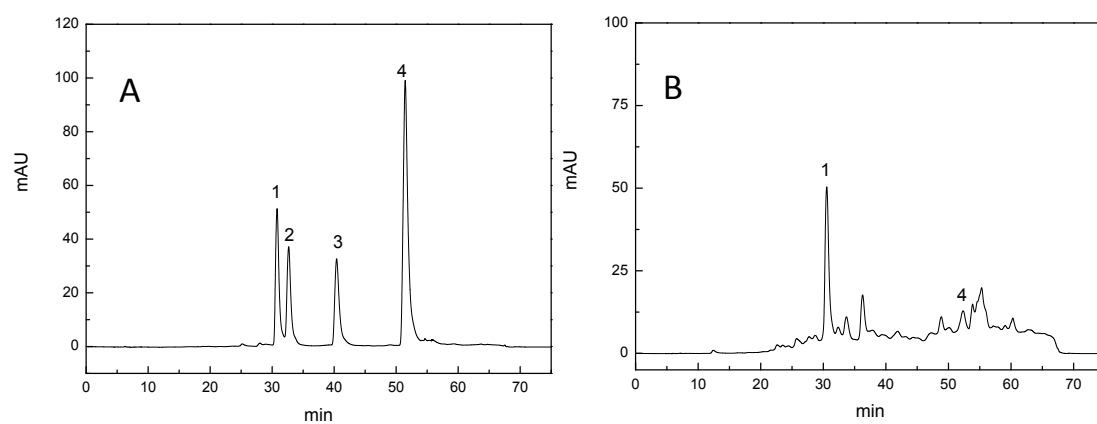


Fig. 2S. Effect of PPP-40 on weight of S180 mice

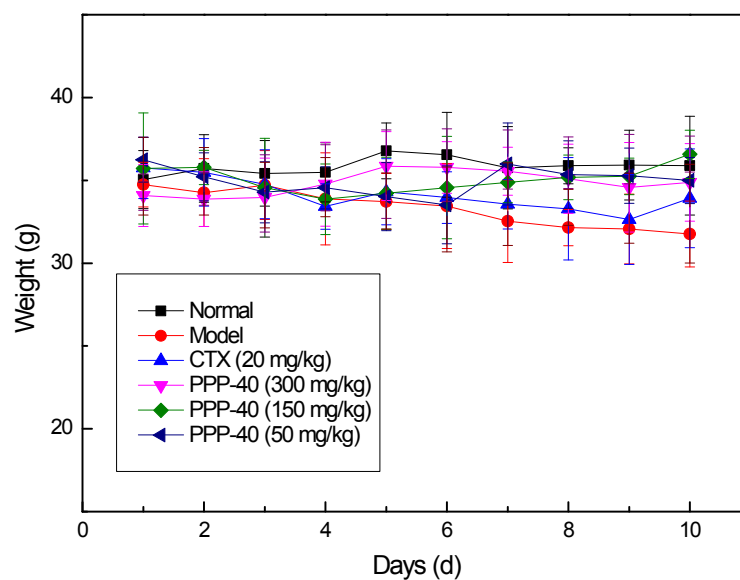


Fig. 3S.

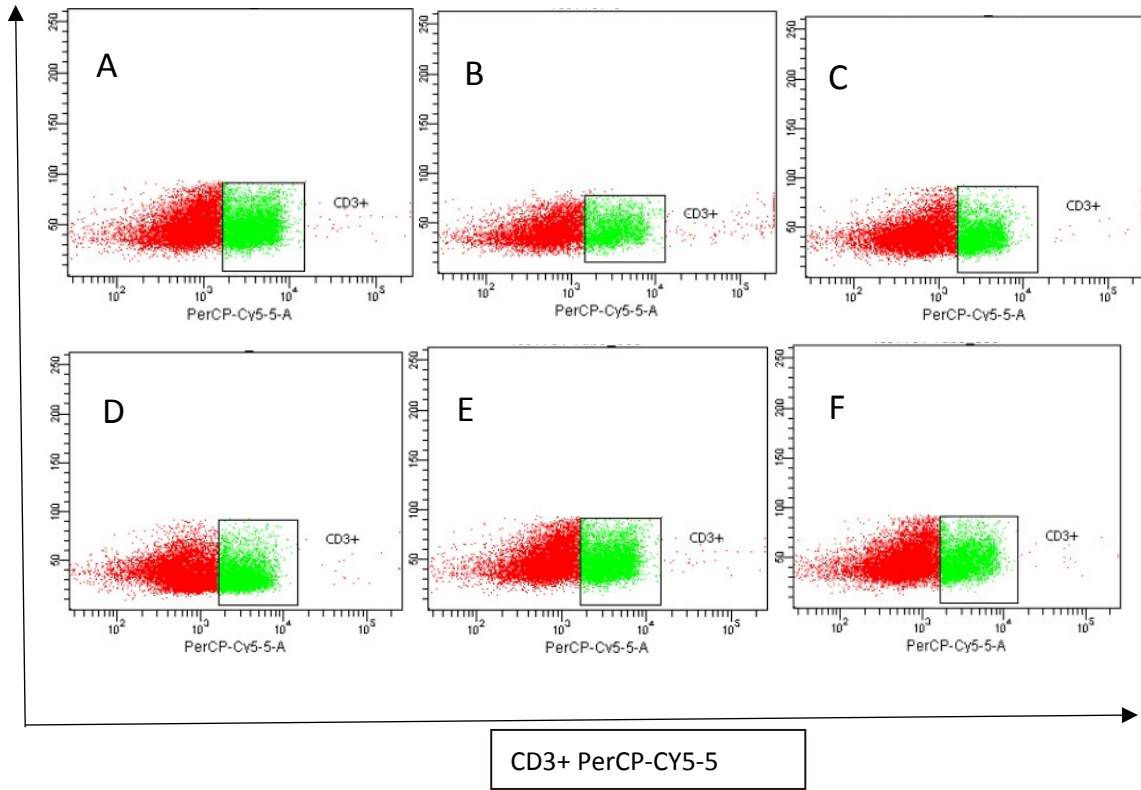


Table 1S

Table 1S. The effect of PPP-40 on the organ index of tumor-bearing S180 mice

Group ^a	Heart index	Liver index	Spleen index	Kidney index
Normal	0.24±0.09	1.97±0.08	0.21±0.09	0.66±0.07
Model	0.13±0.09**	1.21±0.21**	0.15±0.03**	0.47±0.02*
CTX	0.18±0.08*#	1.56±0.31*#	0.13±0.13**	0.59±0.21#
PPP-40-L	0.14±0.16**	1.34±0.08**	0.14±0.08**	0.52±0.02*
PPP-40-M	0.21±0.09##	1.57±0.36*#	0.16±0.07**	0.58±0.17#
PPP-40-H	0.19±0.12##	1.58±0.38*#	0.17±0.12*#	0.56±0.22

Notes: ** $p < 0.01$, * $p < 0.05$ vs Normal group; ## $p < 0.01$, # $p < 0.05$ vs Model group.