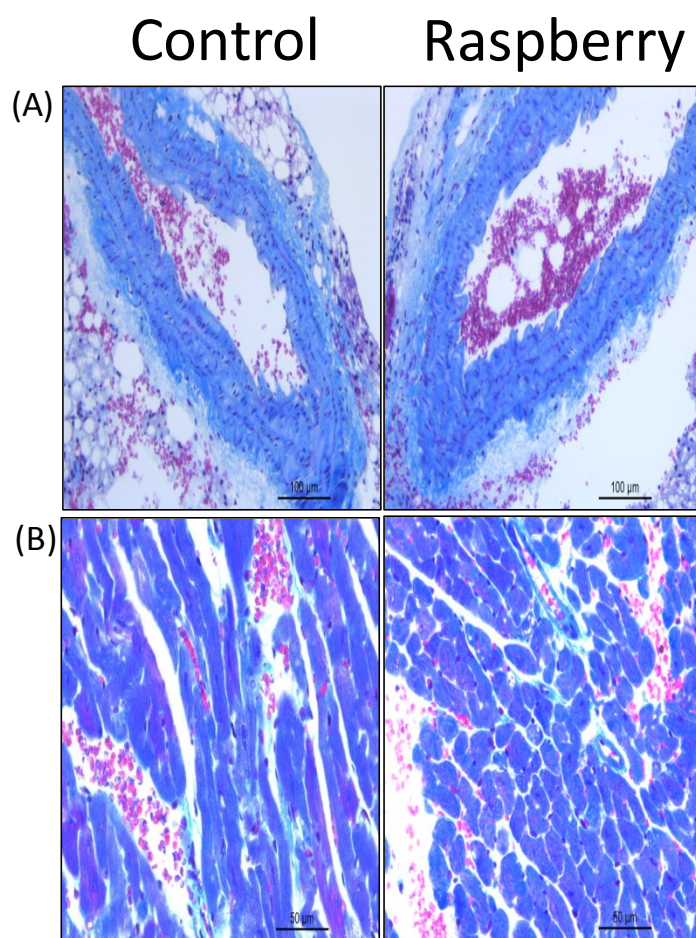


**Electronic supplementary information.** Aortic and heart sections from obese db/db mice fed with raspberry supplemented diet or control diet.



Representative photomicrographs taken from aortic and heart sections. (A) Aortic sections used to measure aortic intima-media thickness (bar = 100  $\mu\text{m}$ , 20X). (B) Heart tissue sections with collagen deposits in blue (bar = 50  $\mu\text{m}$ , 40X). Diabetic (db/db) (BKS.Cg-Dock7m  $+/+$  Lepr $^{db}/Ola^{Hsd}$ ) mice were fed AIN-93G diet (control) or isocaloric AIN-93G raspberry supplemented diet (raspberry) for 8 weeks. Sections were stained with Masson's trichrome blue.