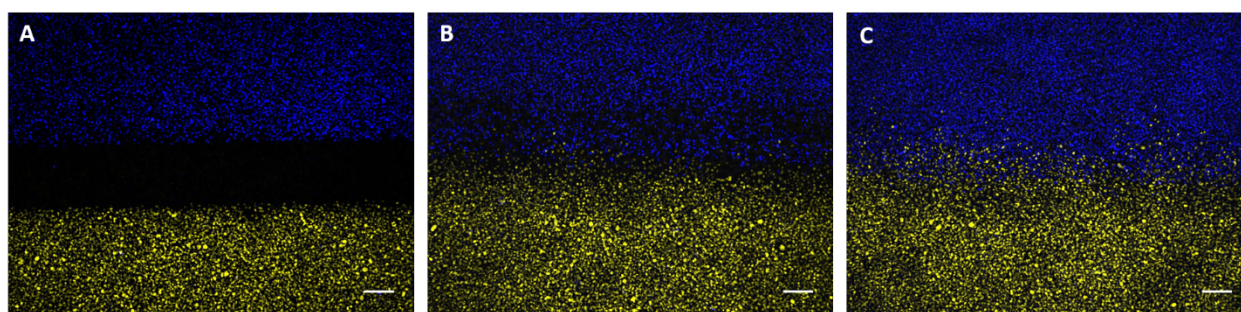
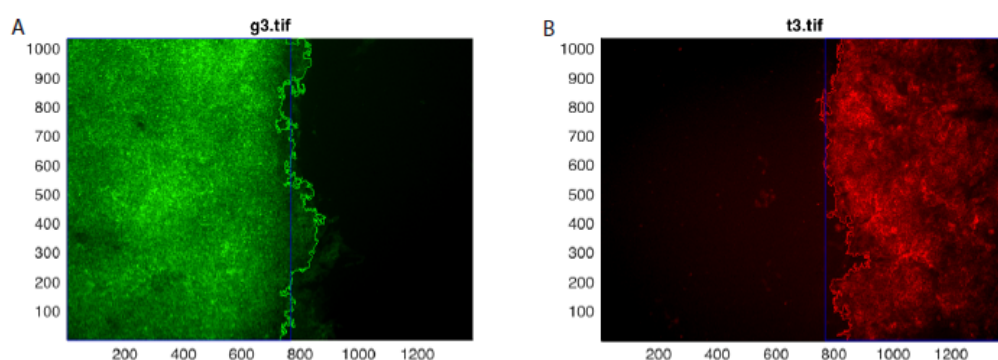


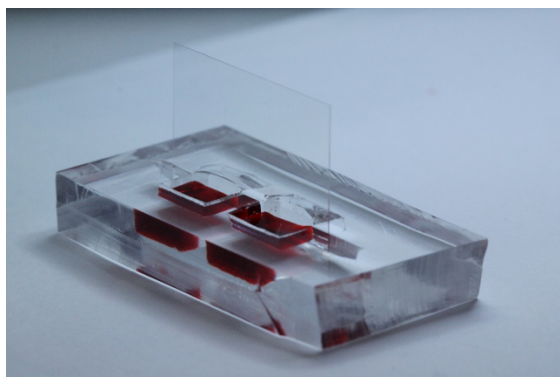
## Supplementary Data



**Figure S1.** Establishment of a coculture interface by cell migration. 3T3 cells were seeded in neighboring wells of an Ibidi microwell insert and cultured overnight before insert removal. Images were acquired at 0 h (A), 24 h (B), and 48 h (C) after insert removal. Scale bar = 200  $\mu\text{m}$ .



**Figure S2.** Automated analysis script detects the border of each cell population.



**Figure S3.** Two-well device. A single coverslip insert blocks both wells simultaneously.