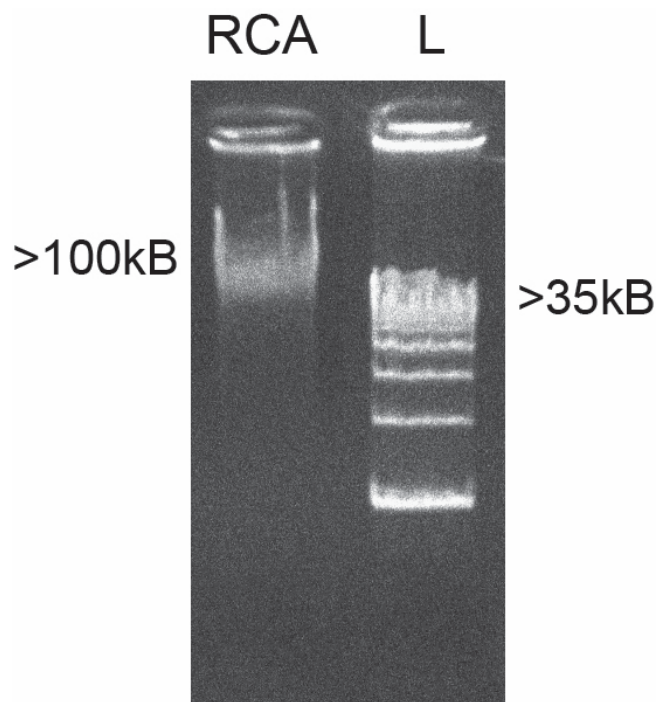
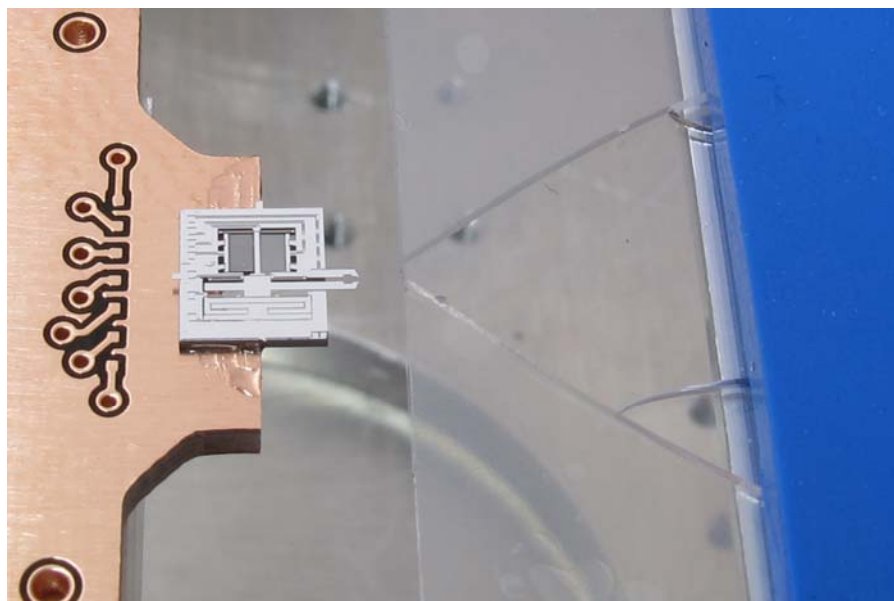


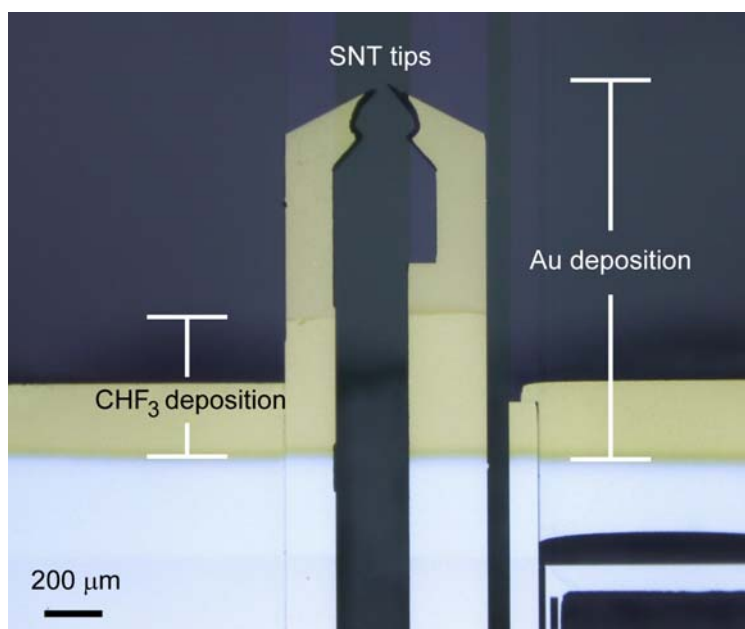
## SUPPLEMENTAL INFORMATION



**Supplemental Figure 1:** Representative ssDNA product generated with RCA using 1.0 fg of circularized oligonucleotide template. L – 10 kB DNA size ladder.



**Supplemental Figure 2:** Microfluidics reaction chamber with a reduced aperture at the place of SNT immersion minimizes reagents and evaporation during a long incubation time (>2 hours).



**Supplemental Figure 3:** CHF<sub>3</sub> treatment and Au deposition on SNTs tips.