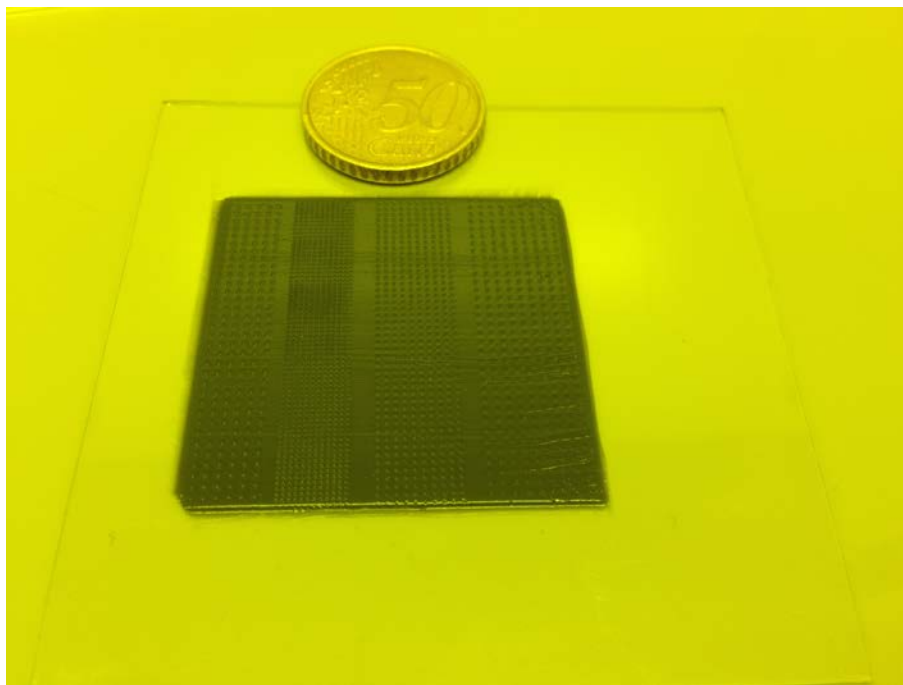
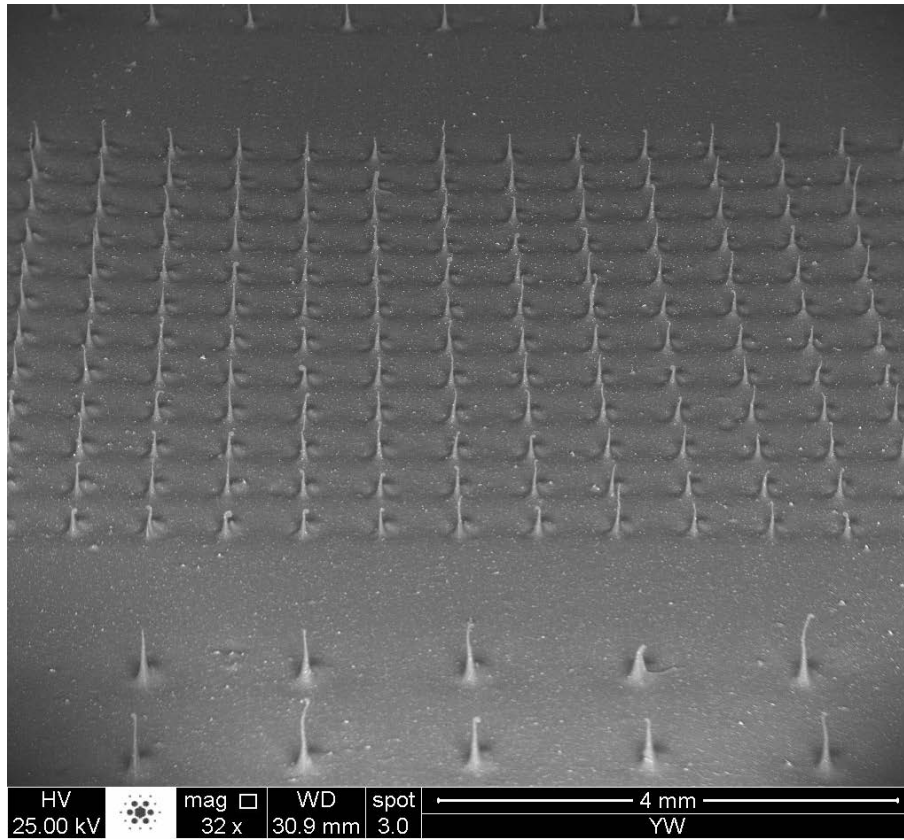


## Appendix II: The scale of production of artificial cilia

In the paper we have shown close-up micrographs of ArtC. In this appendix some images are shown to demonstrate the actual scale of the ArtC arrays that can be produced in our current experiment setup. Fig.1 shows a precursor film roughly  $5\text{ cm} \times 5\text{ cm}$  covered with arrays of ArtC, and Fig. 2 shows an uncropped micrograph taken in an SEM.



**Figure 1** Photo of magnetic artificial cilia showing stripes of cilia arrays with different pitch spacings. The stripes are vertically aligned and the cilia are not clearly visible (only dots can be seen). The size of the glass slide is  $75\text{ mm} \times 75\text{ mm}$ .



**Figure 2** SEM image of a section of the cilia array in Fig.1 taken from a 60°angle. The small white dots are iron particles.