

Supplementary Information:

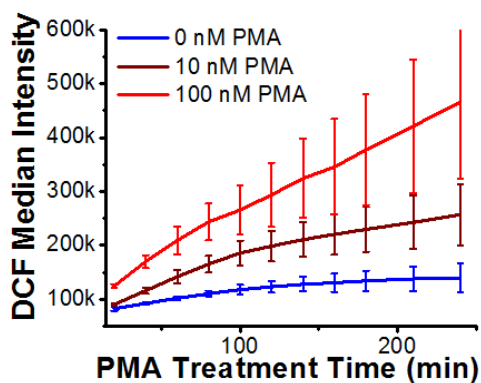


Figure S1: Fluorescent DCF is a result of the oxidation of DCFH-DA by the byproducts of the oxidative burst in neutrophils. The intensity of DCF over time increases for different PMA doses indicating granulocyte activation.

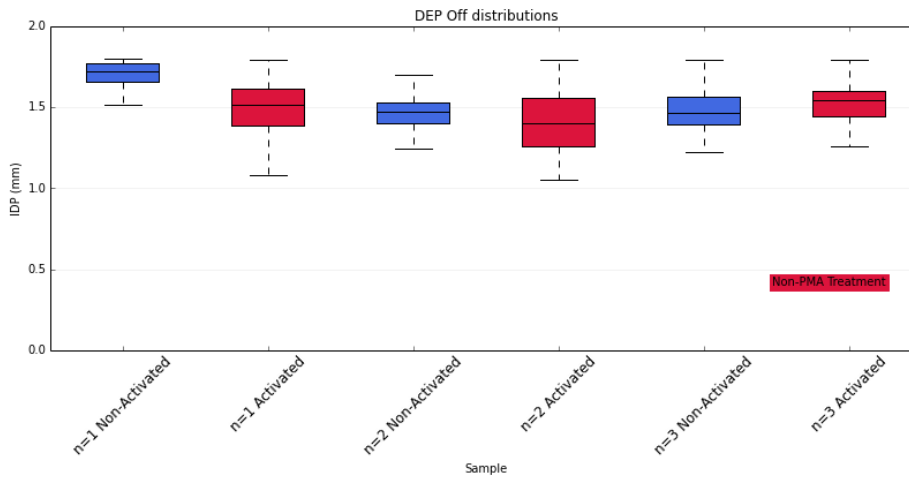


Figure S3: The IDP distributions of cells when DEP is OFF does not change significantly for PMA treated and no-treated cells across 3 different samples.

10

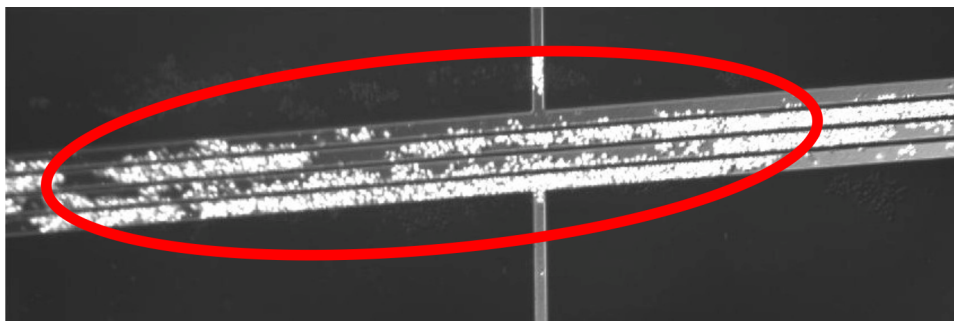


Figure S4: Cells from activated samples stick to the channel walls of the single-sided IDS.

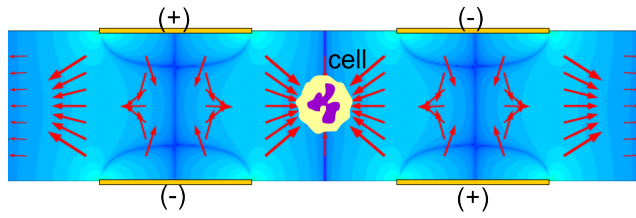
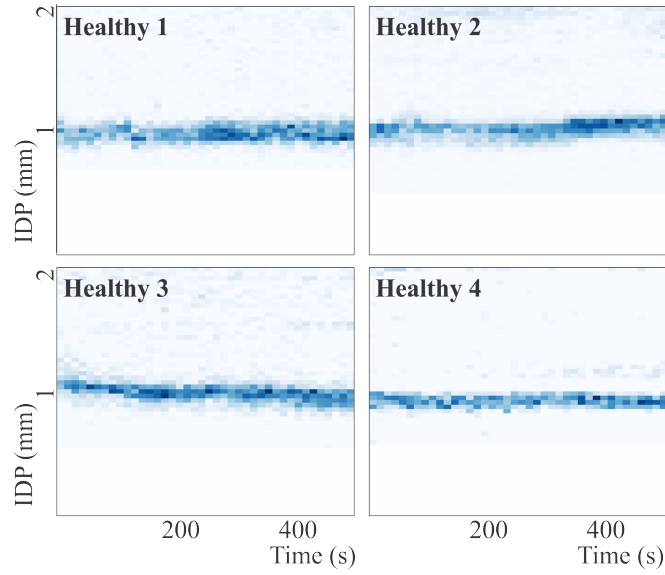


Figure S5: The resulting DEP force centers cells in the middle of the channel.



5 Figure S6: Density plots of the IDP of cells for samples obtained from 4 healthy mice. All samples show a consistent IDP throughout the experiment.