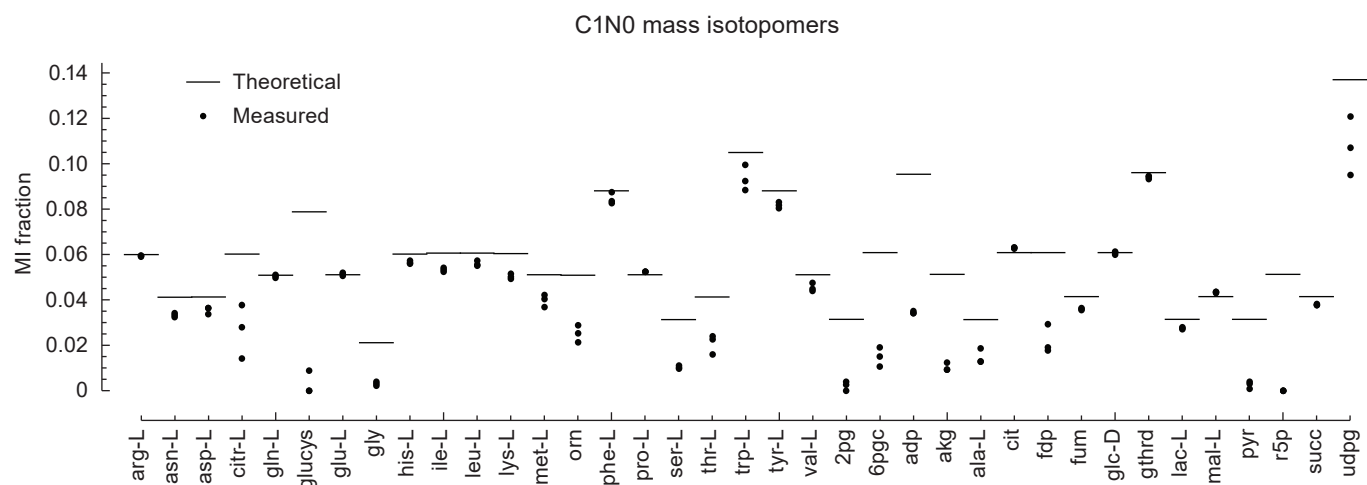


Figure S1



Measurement bias for mass isotopomer fractions. Experimentally measured MI fractions of the $^{13}\text{C}_1^{15}\text{N}_0$ isotopomer in monitored metabolites from unlabeled cultures (from naturally occurring ^{13}C) is plotted for three replicates. Solid lines mark the theoretical $^{13}\text{C}_1^{15}\text{N}_0$ fraction.