

Supplementary Information

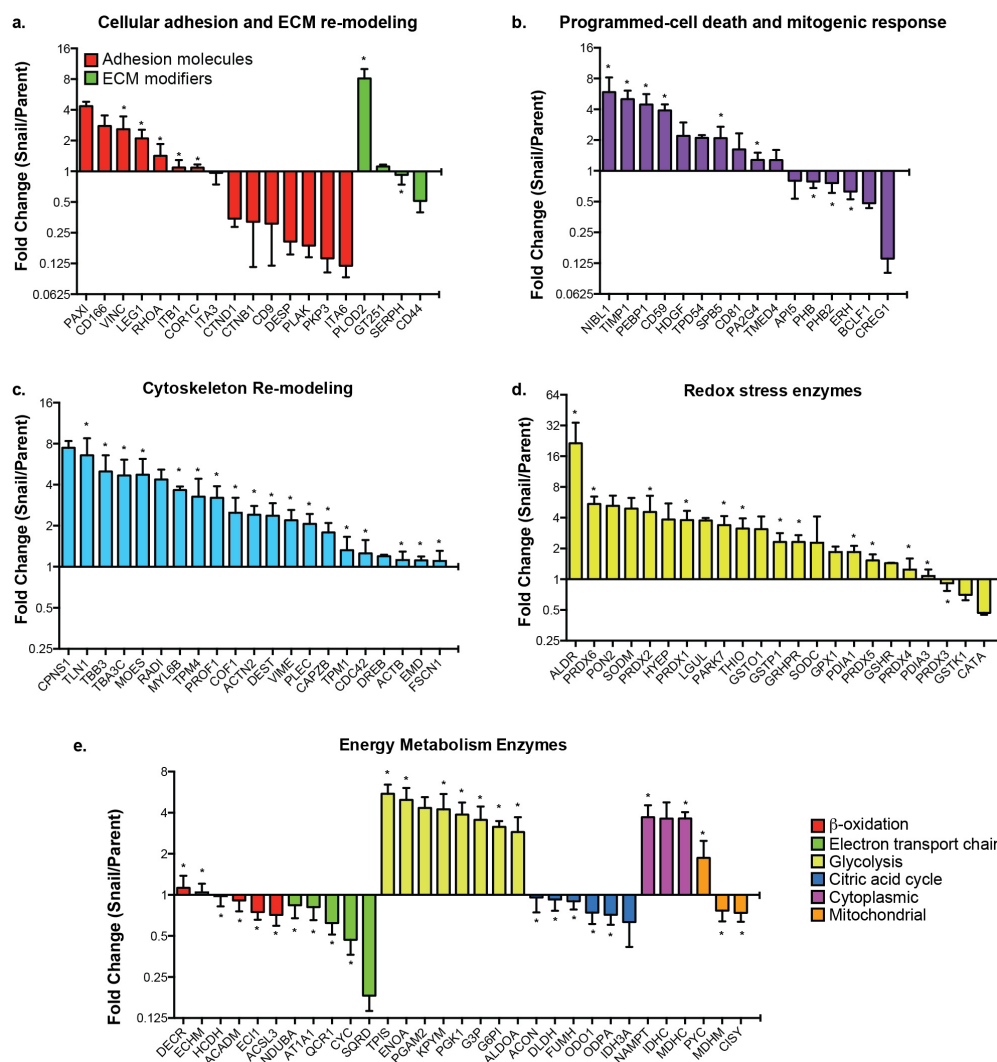
Correlated S-palmitoylation profiling of Snail-induced epithelial to mesenchymal transition

Jeannie L. Hernandez¹, Dahvid Davda^{1,2}, Jaimeen D. Majmudar¹, Sang Joon Won², Ashesh Prakash¹, Alexandria I. Choi¹, and Brent R. Martin^{1,2*}

¹Department of Chemistry, ²Program in Chemical Biology, University of Michigan, 930 N. University Ave., Ann Arbor, MI 48109

*Correspondence should be sent to brentm@umich.edu

Supplementary Figure 1. Selected gene ontology analysis of bi-directional SILAC analysis in MCF10A cells with or without Snail transduction. Asterisks denote bi-directional SILAC ratios that are statistically equivalent.



Supplementary Figure 2. Acyl biotin exchange analysis of several putatively palmitoylated proteins. Hydroxylamine is abbreviated as NH₂OH.

