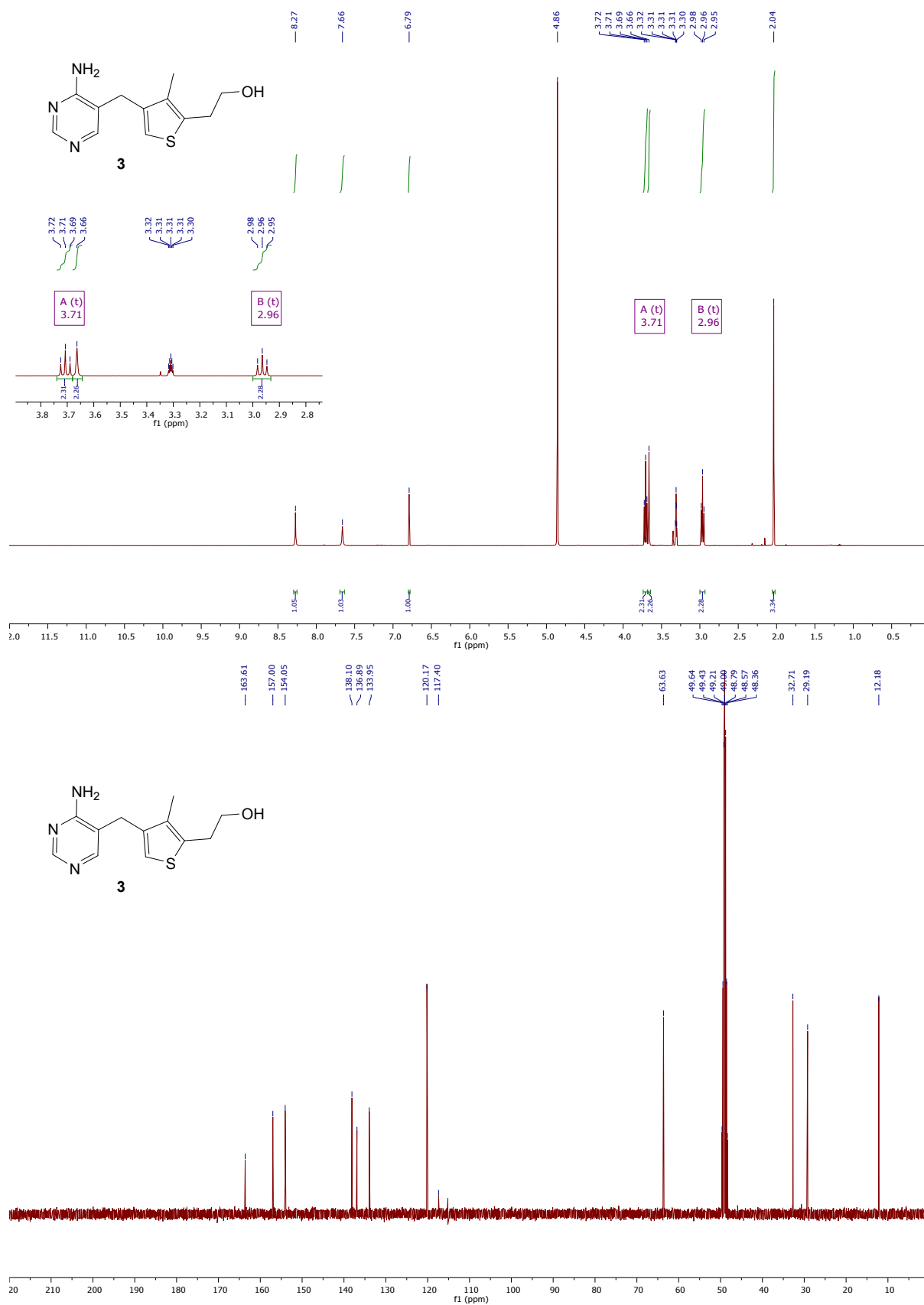


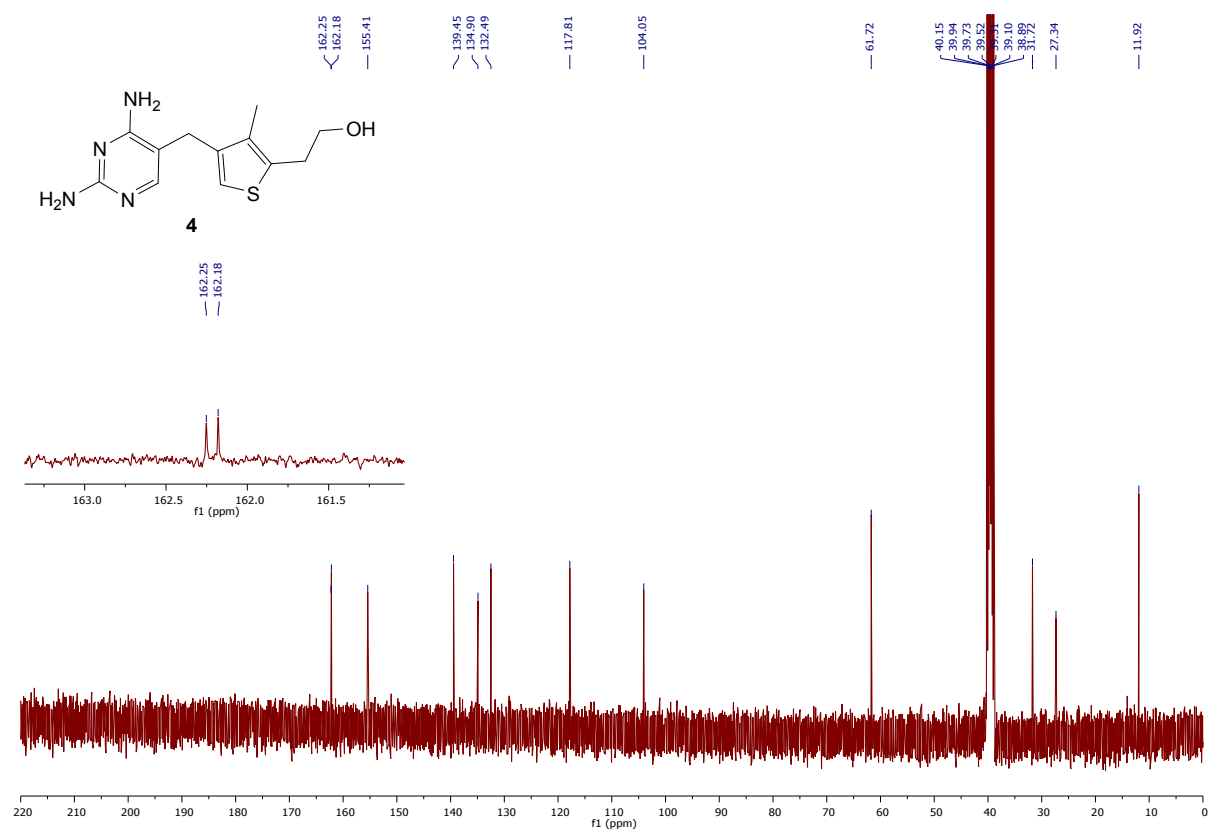
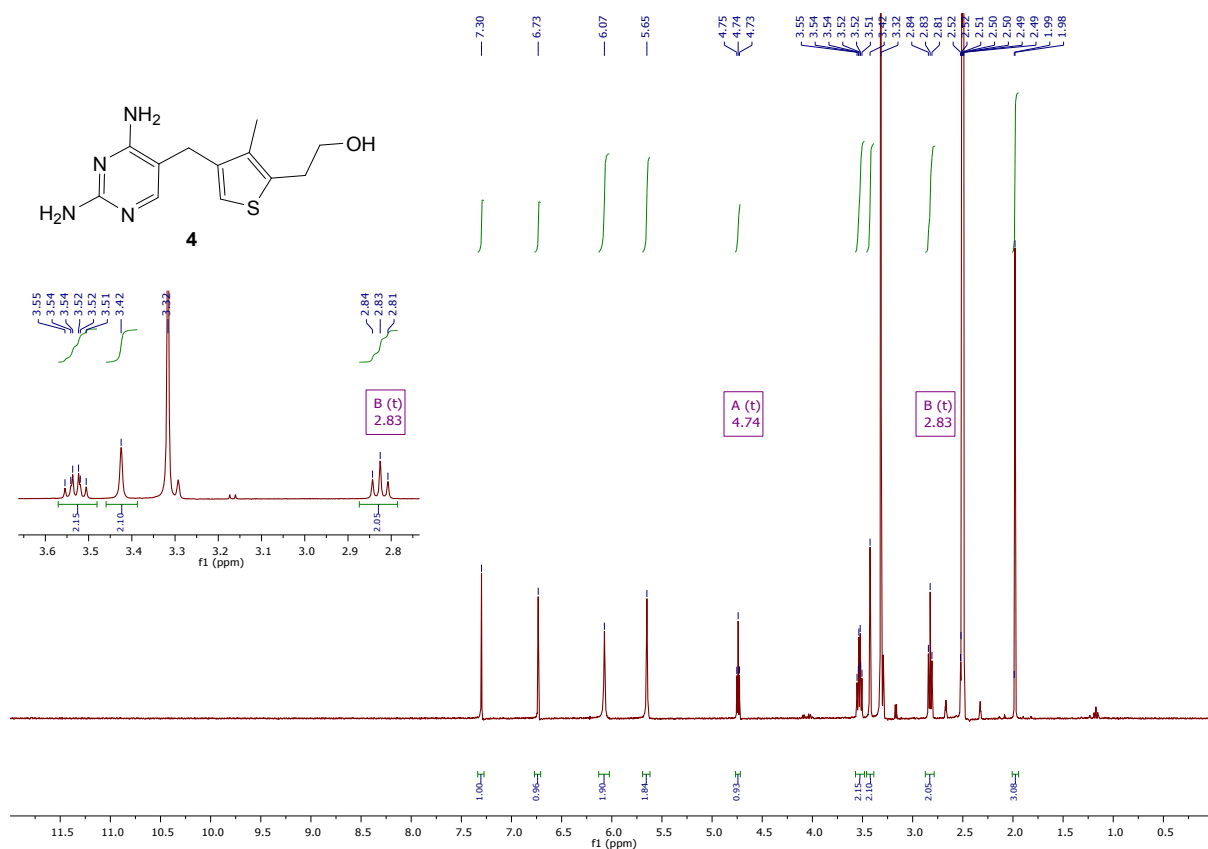
Supplementary information

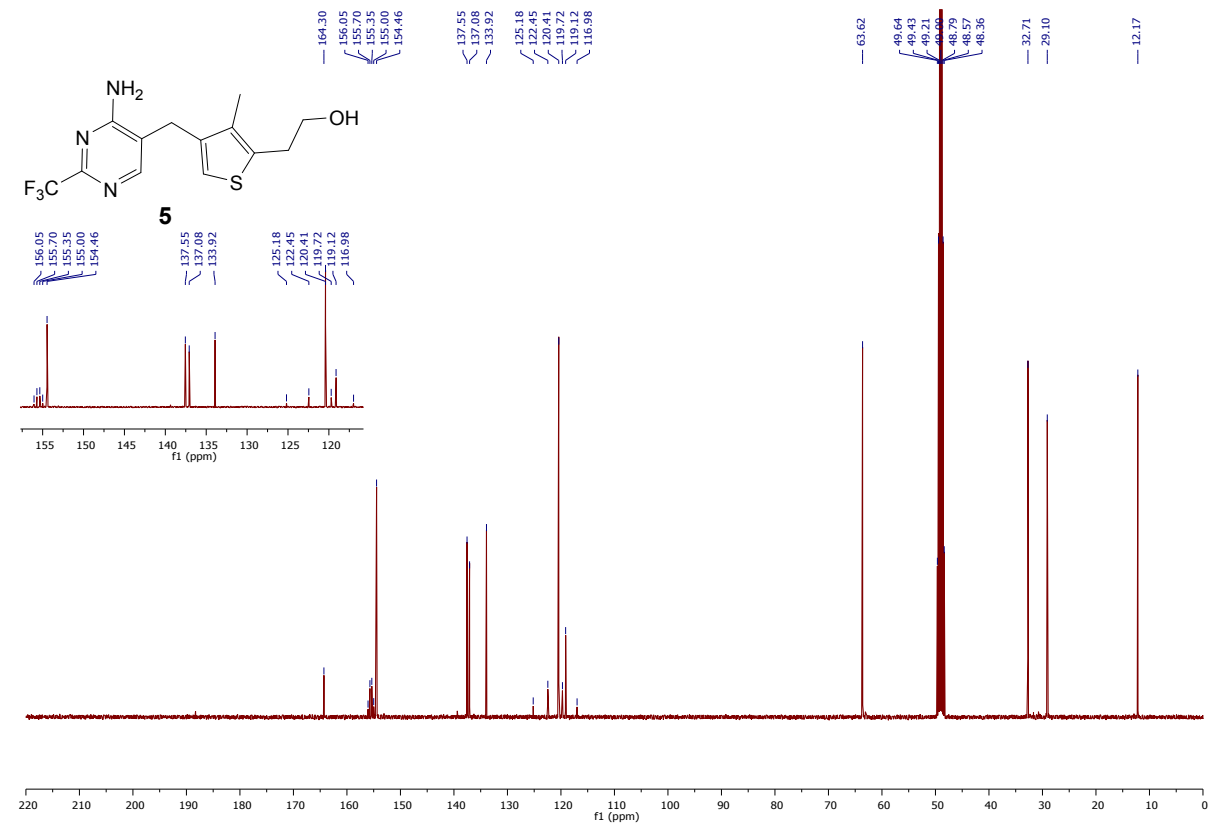
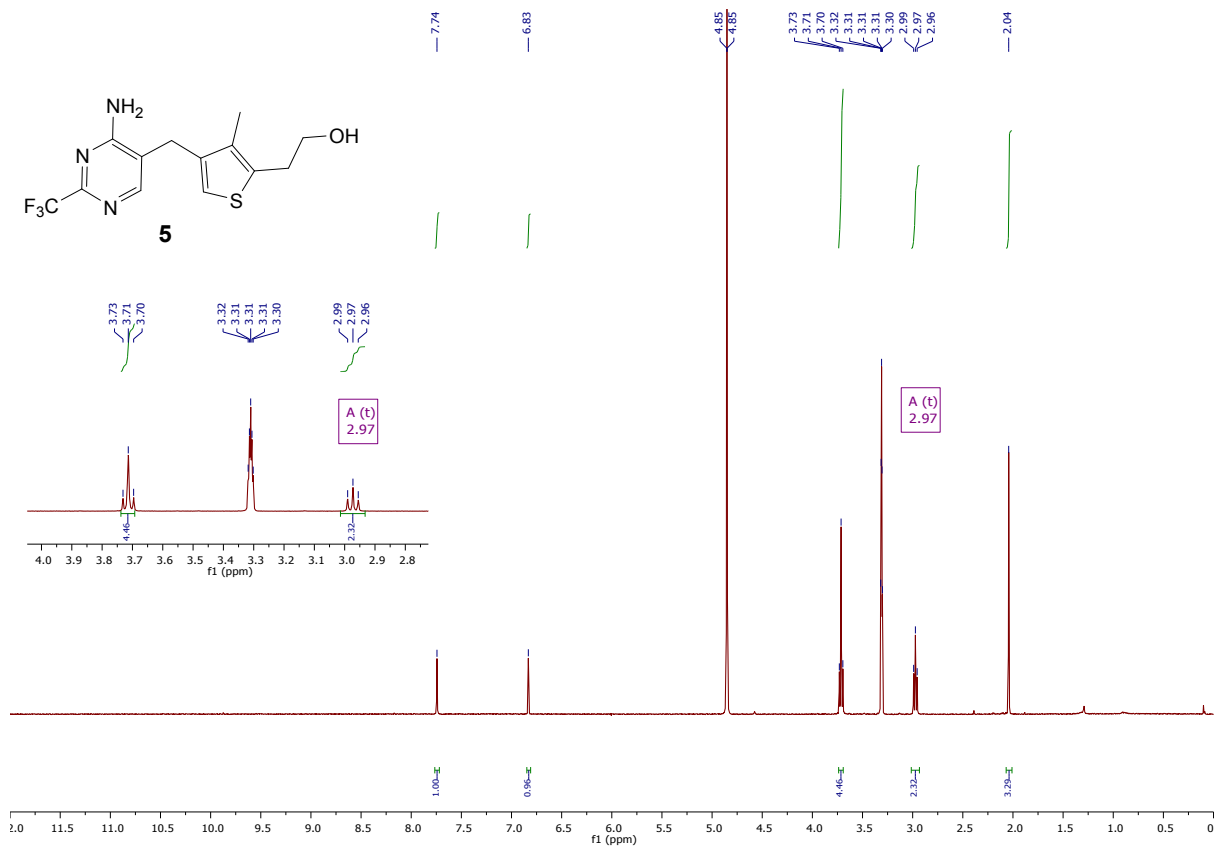
Design and synthesis of thiamine analogues to study their binding to the ECF transporter for thiamine in bacteria

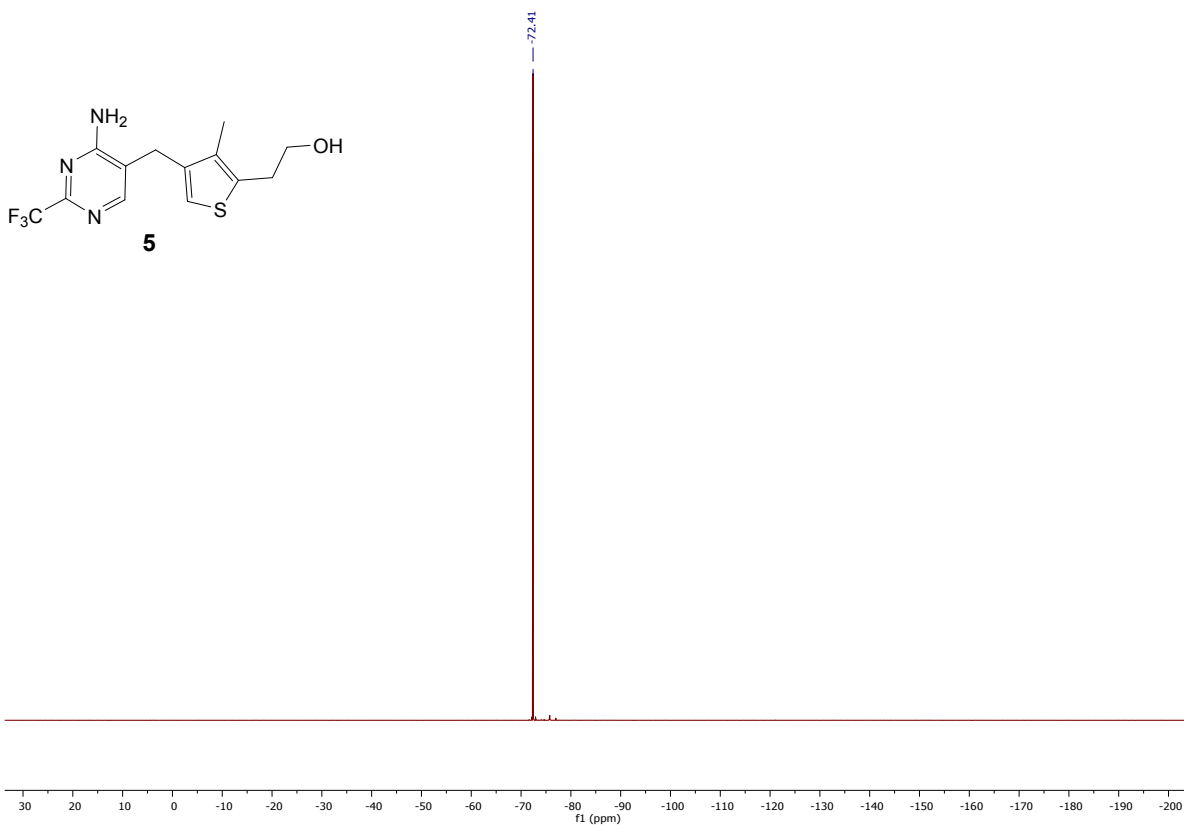
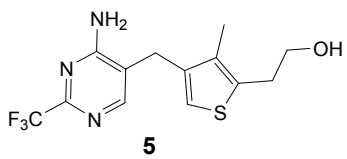
L. Monjas, L. J. Y. M. Swier, A. R. de Voogd, R. C. Oudshoorn, A. K. H. Hirsch, and D. J. Slotboom

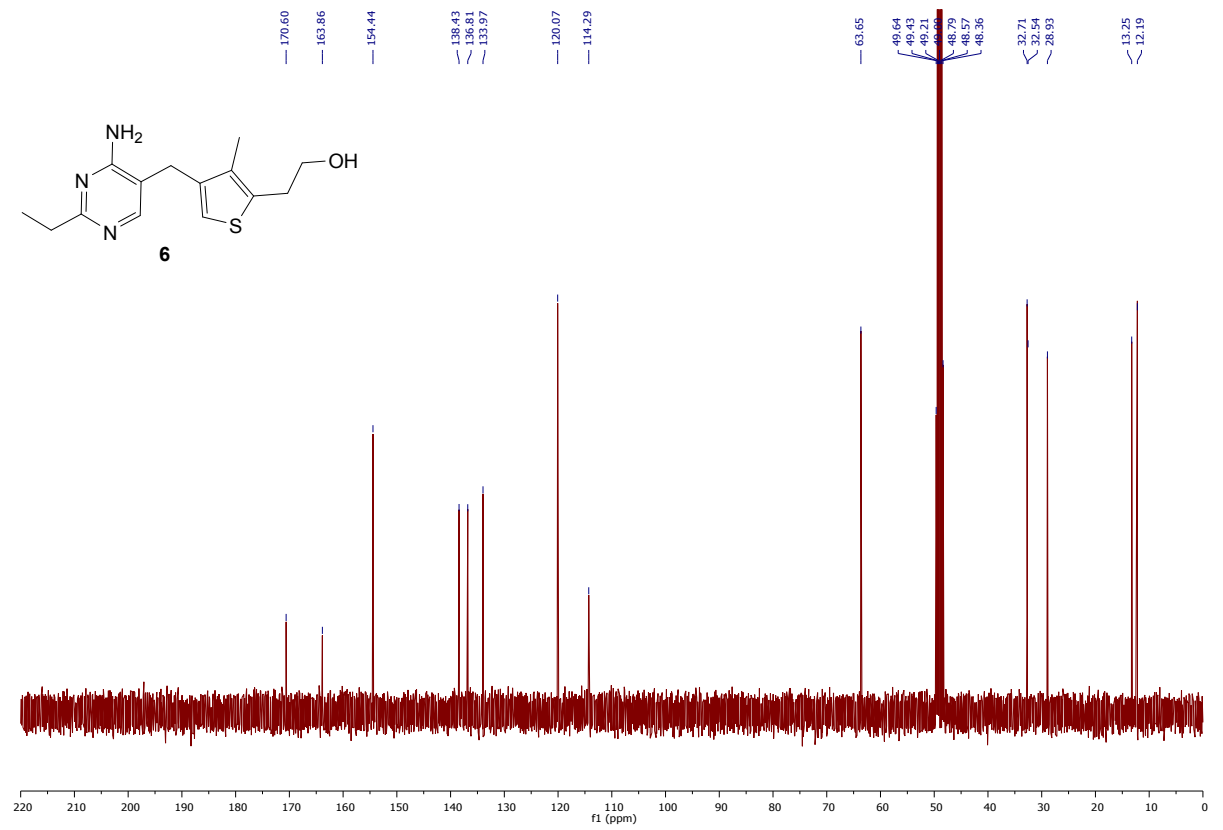
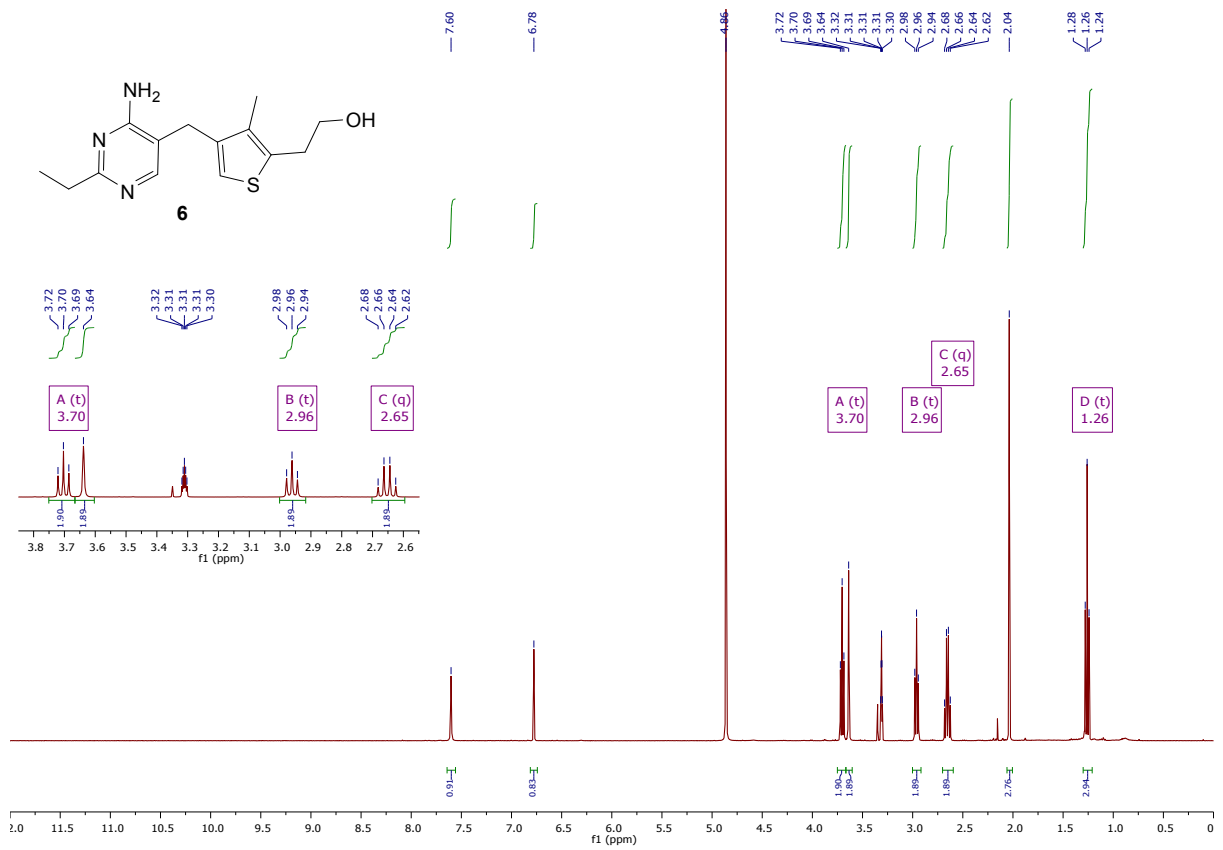
NMR spectra of compounds 3–7

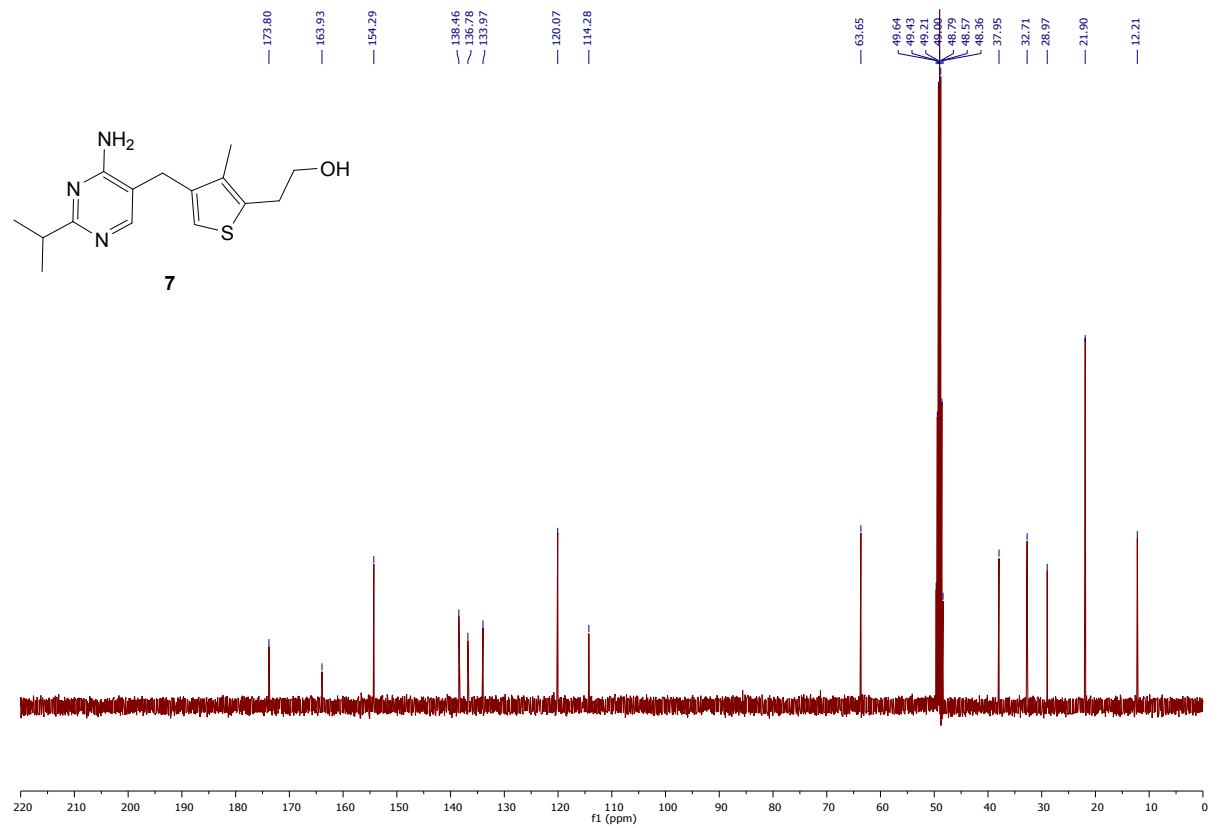
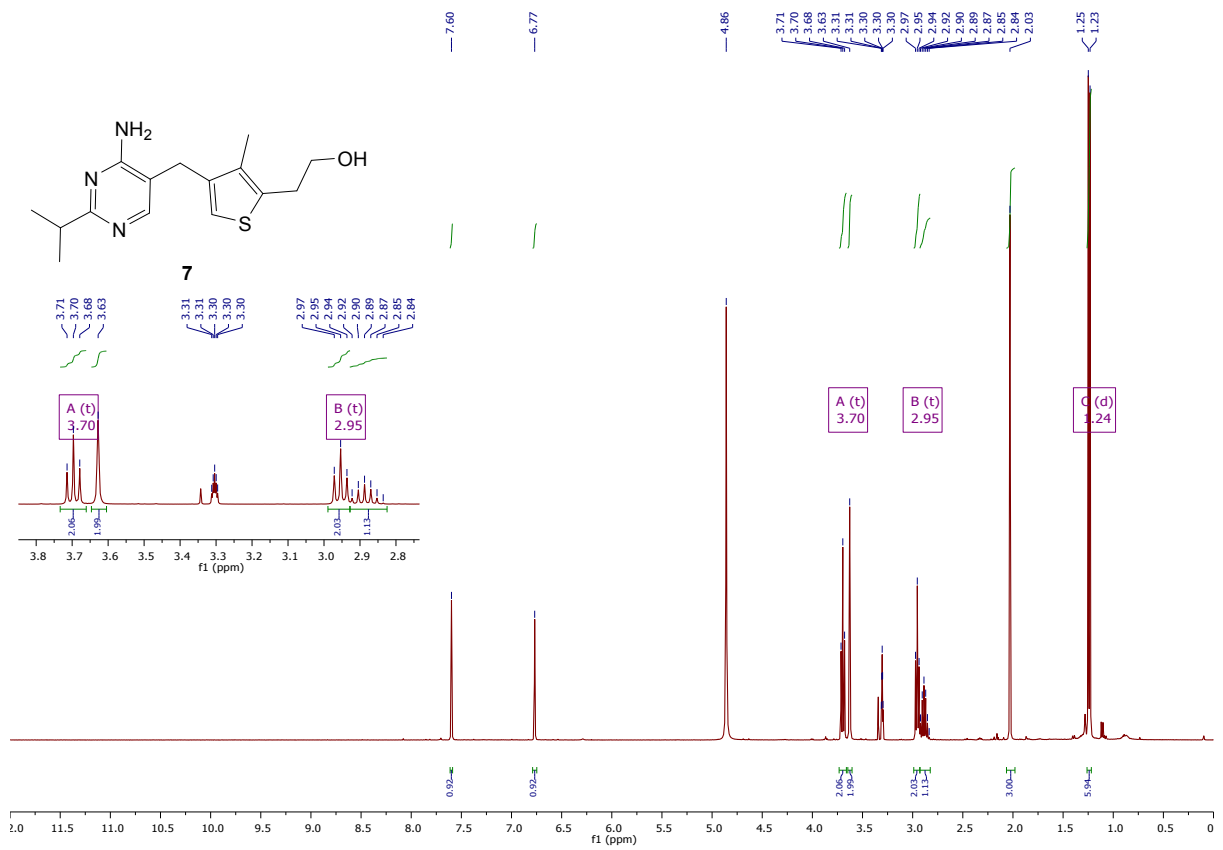








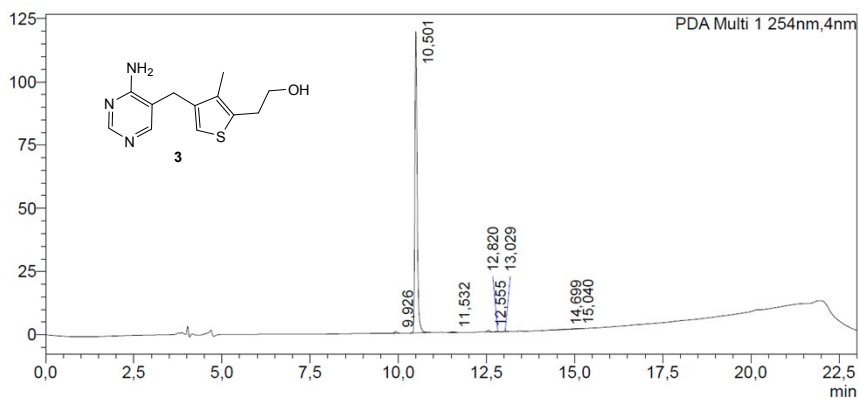




HPLC chromatograms of compounds 3–7

<Chromatogram>

mAU



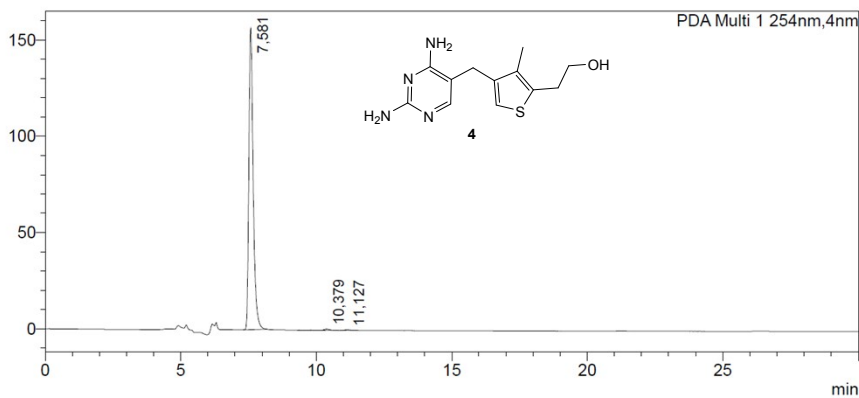
<Peak Table>

PDA Ch1 254nm

Peak#	Ret. Time	Area	Height	Conc.
1	9.926	2726	619	0.499
2	10.501	533062	119080	97.540
3	11.532	1859	273	0.340
4	12.555	2969	568	0.543
5	12.820	1534	229	0.281
6	13.029	1219	199	0.223
7	14.699	1749	115	0.320
8	15.040	1385	99	0.254
Total		546504	121182	

<Chromatogram>

mAU



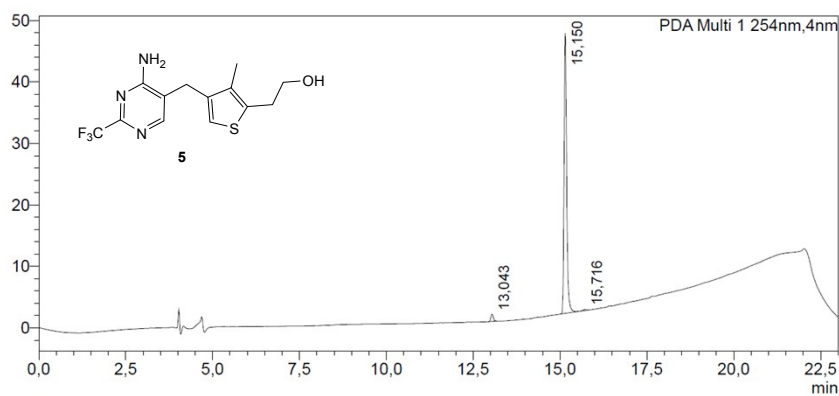
<Peak Table>

PDA Ch1 254nm

Peak#	Ret. Time	Area	Height	Conc.
1	7.581	1733634	156403	99.513
2	10.379	6304	559	0.362
3	11.127	2185	219	0.125
Total		1742123	157181	

<Chromatogram>

mAU



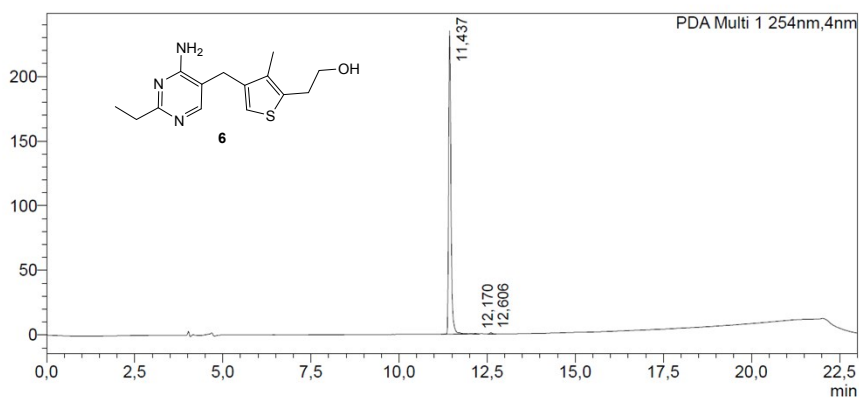
<Peak Table>

PDA Ch1 254nm

Peak#	Ret. Time	Area	Height	Conc.
1	13,043	5714	1152	2,347
2	15,150	236444	45565	97,116
3	15,716	1307	178	0,537
Total		243465	46895	

<Chromatogram>

mAU



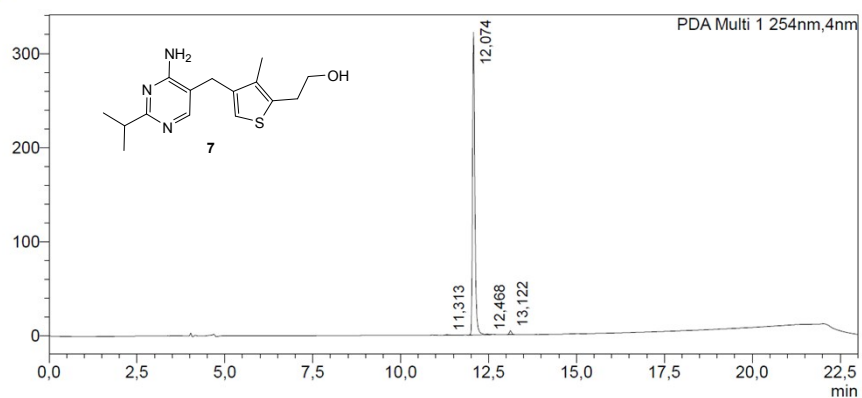
<Peak Table>

PDA Ch1 254nm

Peak#	Ret. Time	Area	Height	Conc.
1	11,437	1081194	234723	99,509
2	12,170	1118	271	0,103
3	12,606	4217	952	0,388
Total		1086529	235946	

<Chromatogram>

mAU



<Peak Table>

PDA Ch1 254nm

Peak#	Ret. Time	Area	Height	Conc.
1	11,313	4883	657	0,320
2	12,074	1500962	321427	98,380
3	12,468	1468	412	0,096
4	13,122	18358	4259	1,203
Total		1525672	326755	