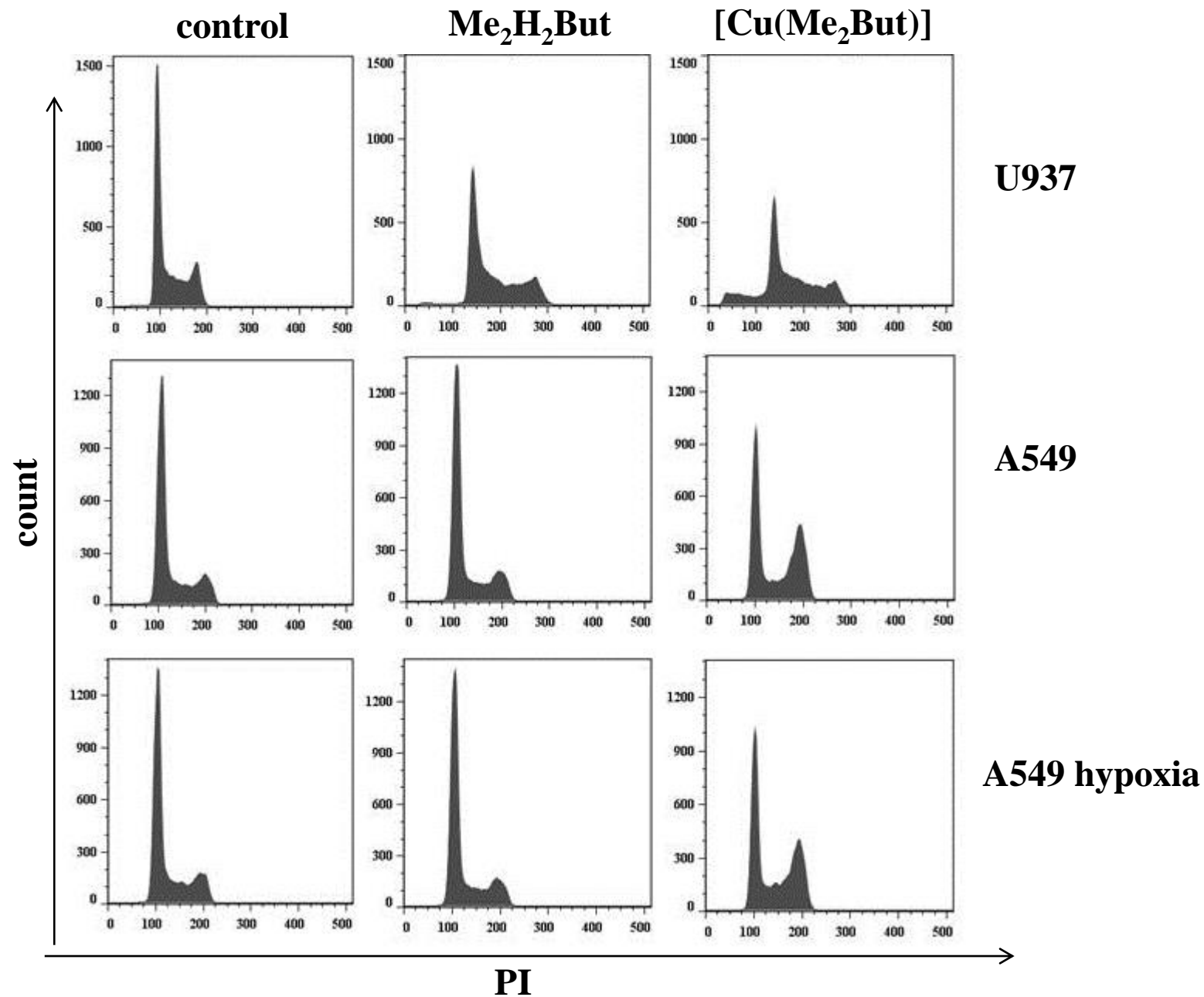
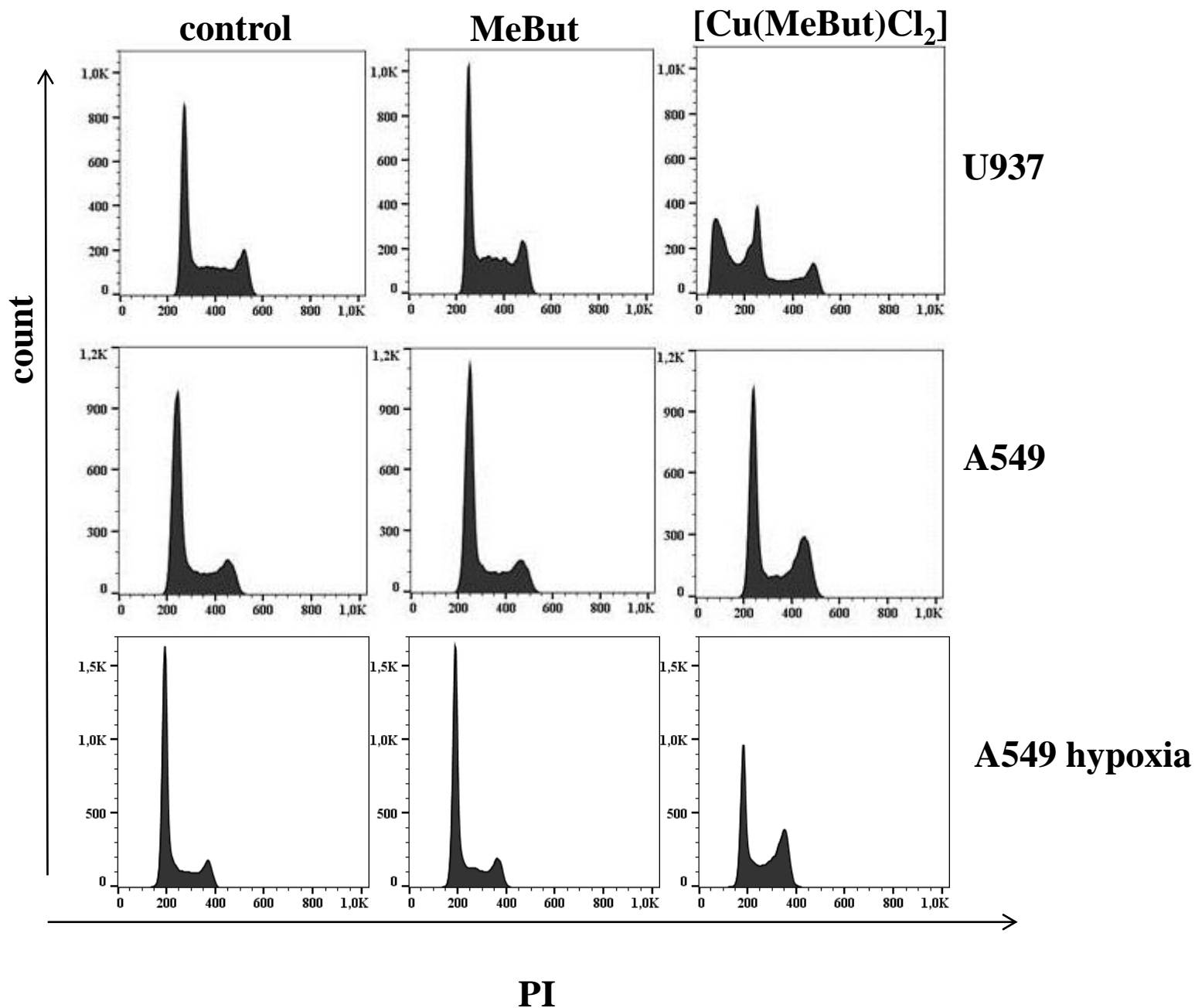


## **SUPPLEMENTARY MATERIALS**

**Fig. S1 Cycle**

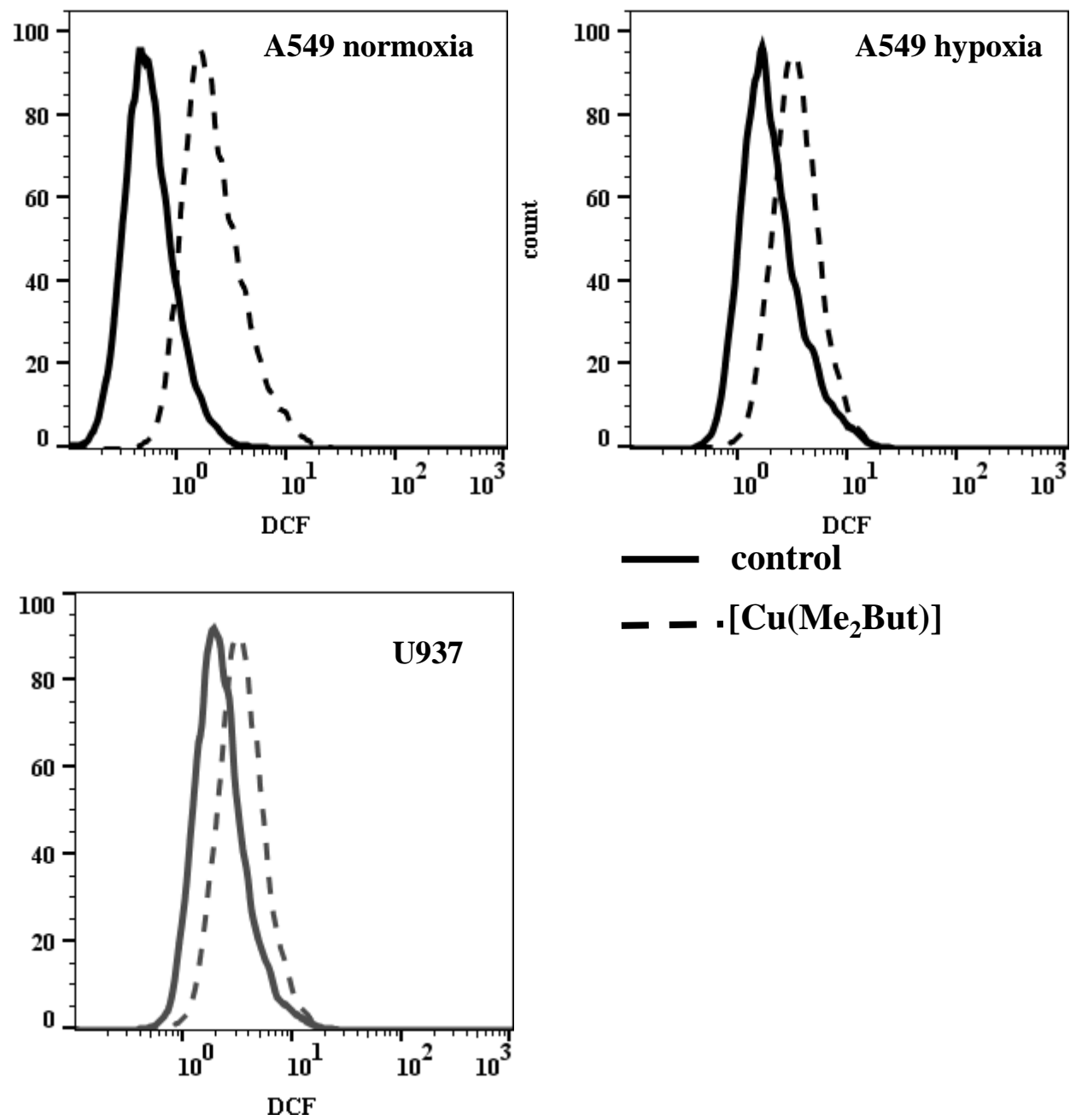


**Fig S2 Cycle**

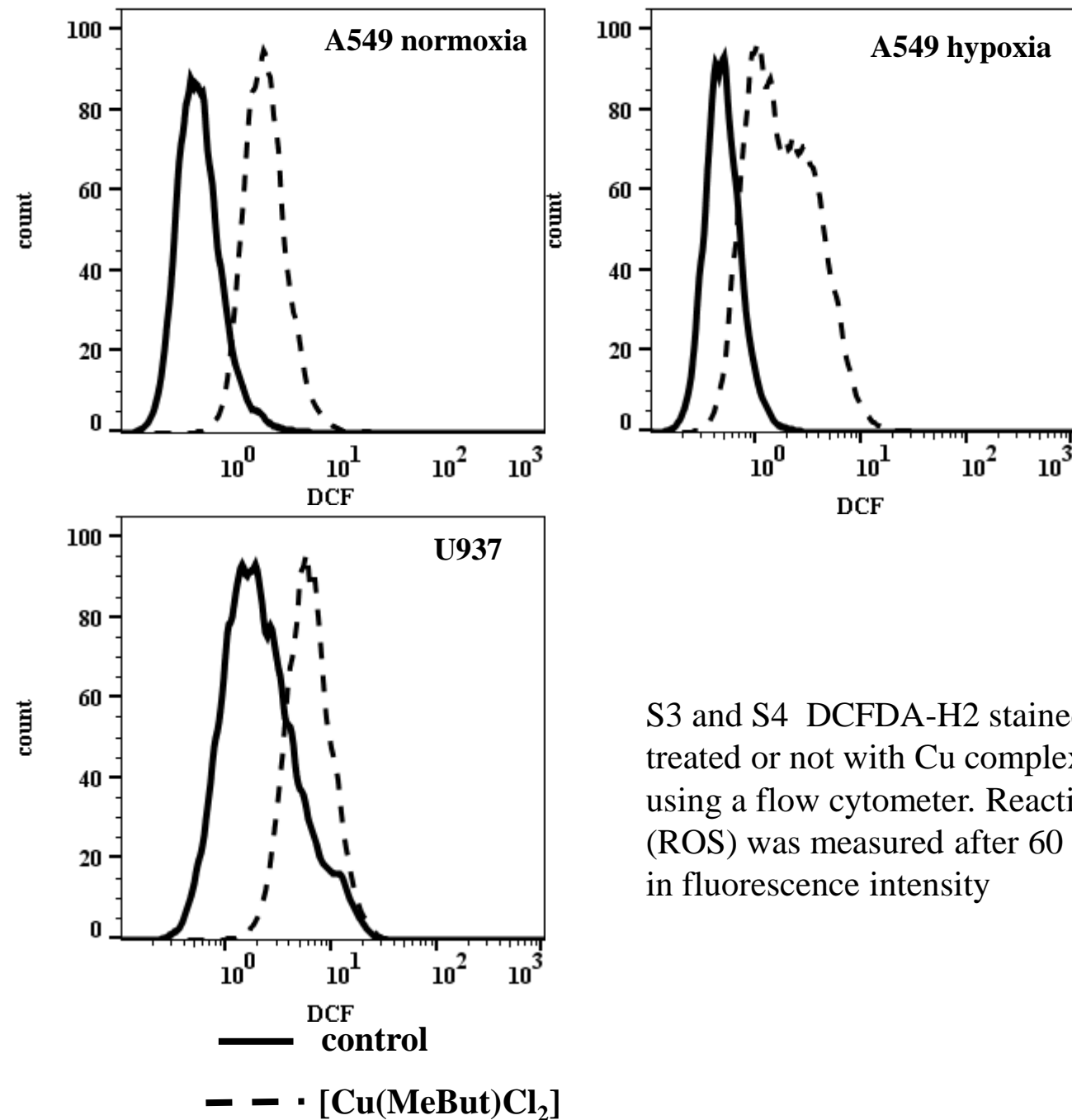


S1 and S2. Cell cycle distribution of cells treated with IC<sub>50</sub> concentrations of ligands and Cu complexes. Monoparametric DNA analysis separate cells into three distinct phases, corresponding to different peaks: G0/G1, S and, G2/M phase.

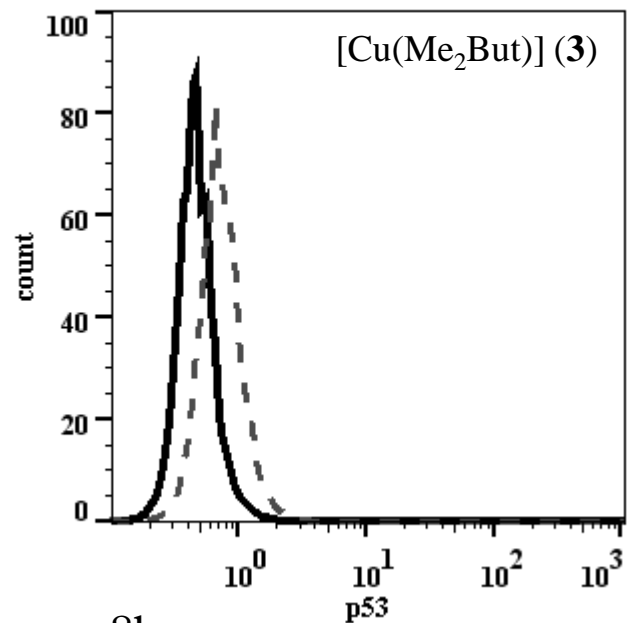
**Fig S3. ROS (3)**



**Fig. S4 (4) ROS**



S3 and S4 DCFDA-H2 stained A549 and U937, treated or not with Cu complexes, were analyzed using a flow cytometer. Reactive oxygen species (ROS) was measured after 60 minutes as the increase in fluorescence intensity



8h

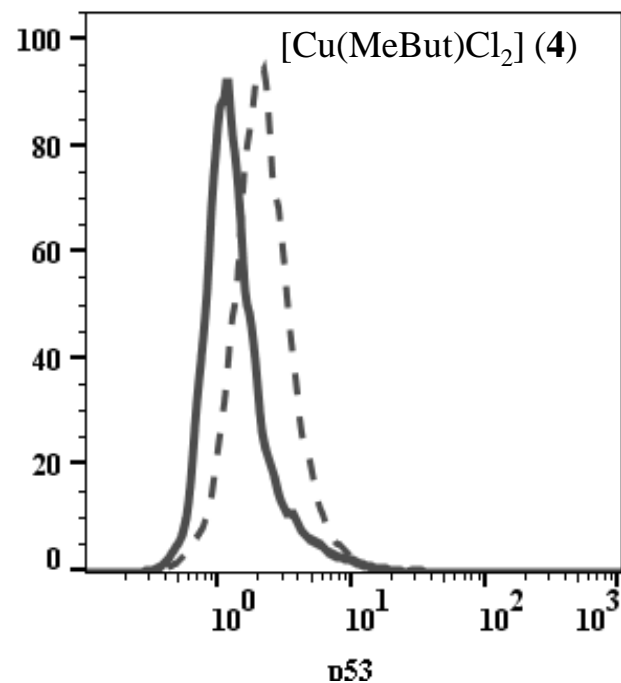


Fig. S5. Flow cytometry-based analysis of p53 expression in A549 cells treated with Cu Complexes. (Control: solid line; 8 h treated cells: dashed line).