

## Lawson – DAMN Based Colorimetric Chemosensor for Rapid Naked – Eye Detection of Mercury (II)

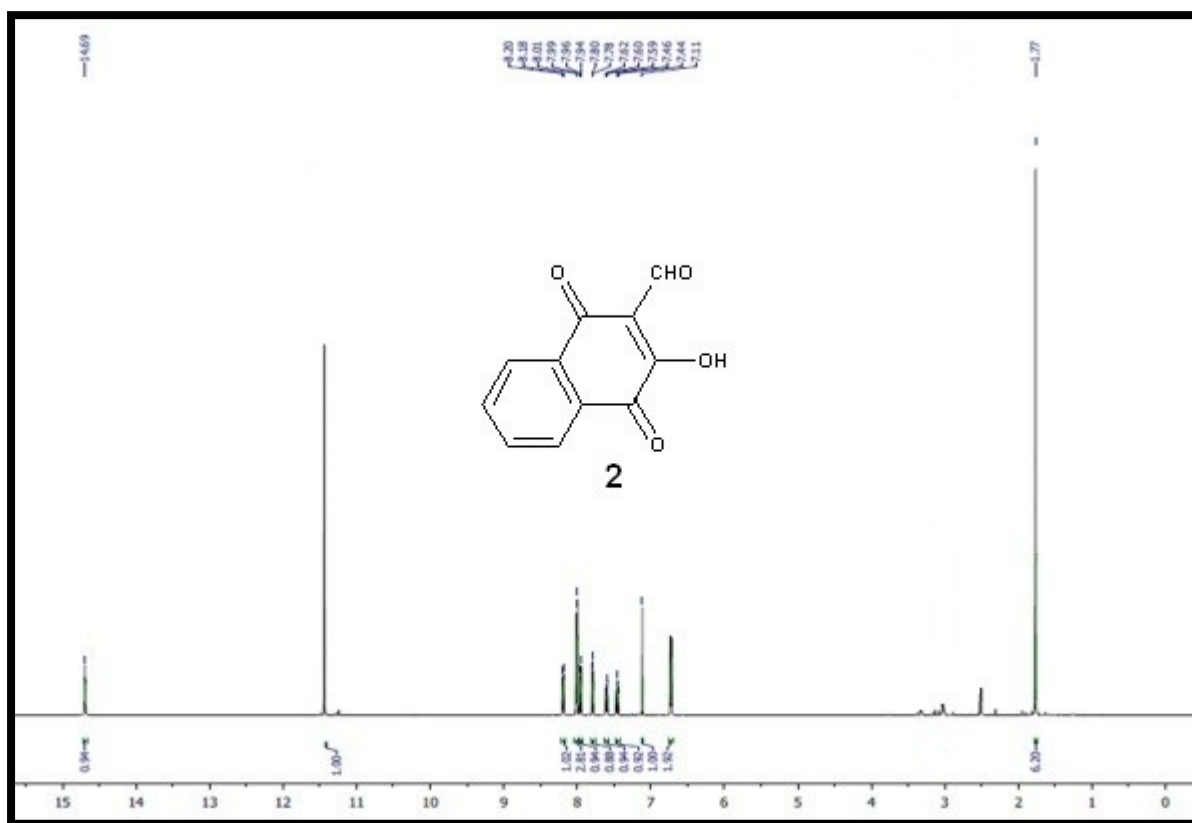
Sharad R. Patil, Amol S. Choudhary and Nagaiyan Sekar\*

*Department of Dyestuff Technology, Institute of Chemical Technology, Nathalal Parekh  
Marg, Matunga, Mumbai - 400 019 (India).*

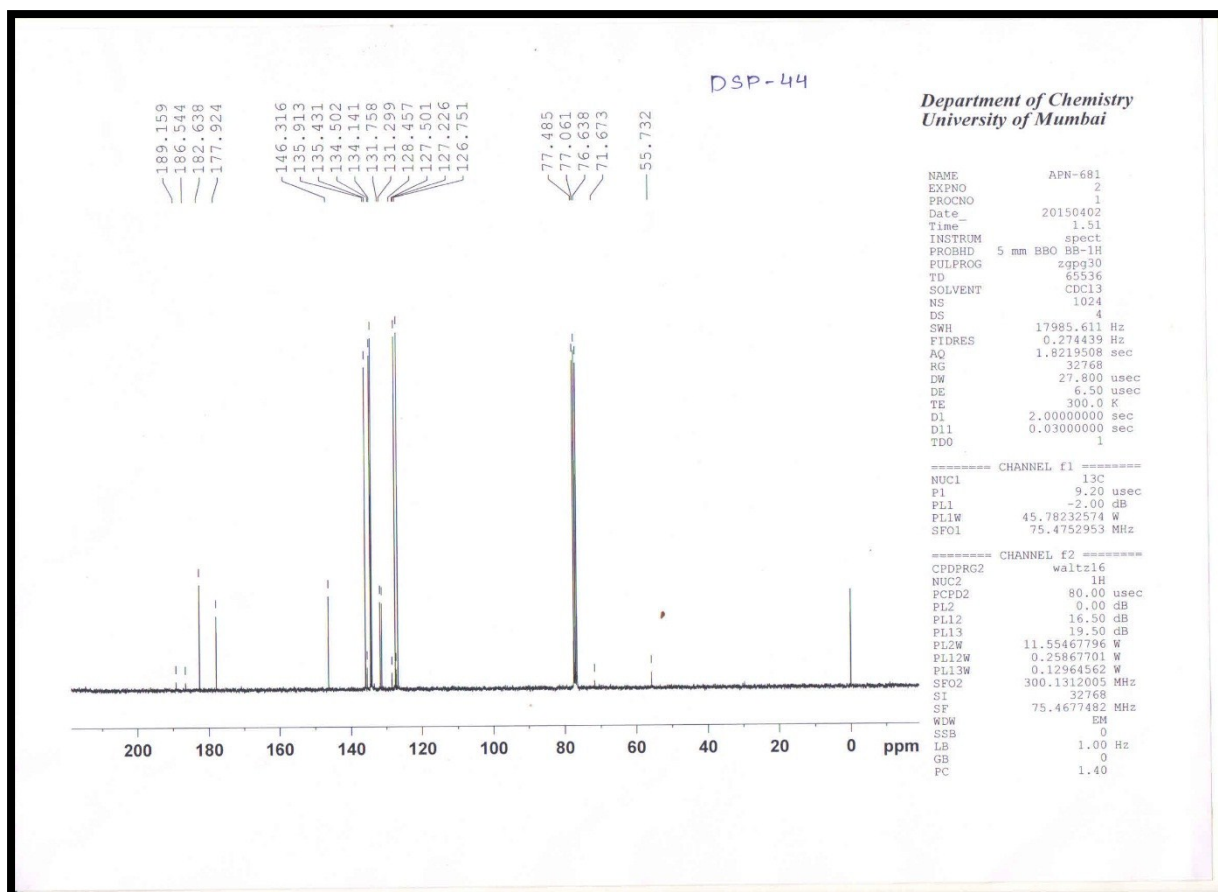
\*E-mail: [n.sekar@ictmumbai.edu.in](mailto:n.sekar@ictmumbai.edu.in), [sharad.umd.patil@gmail.com](mailto:sharad.umd.patil@gmail.com)

### Supporting Information

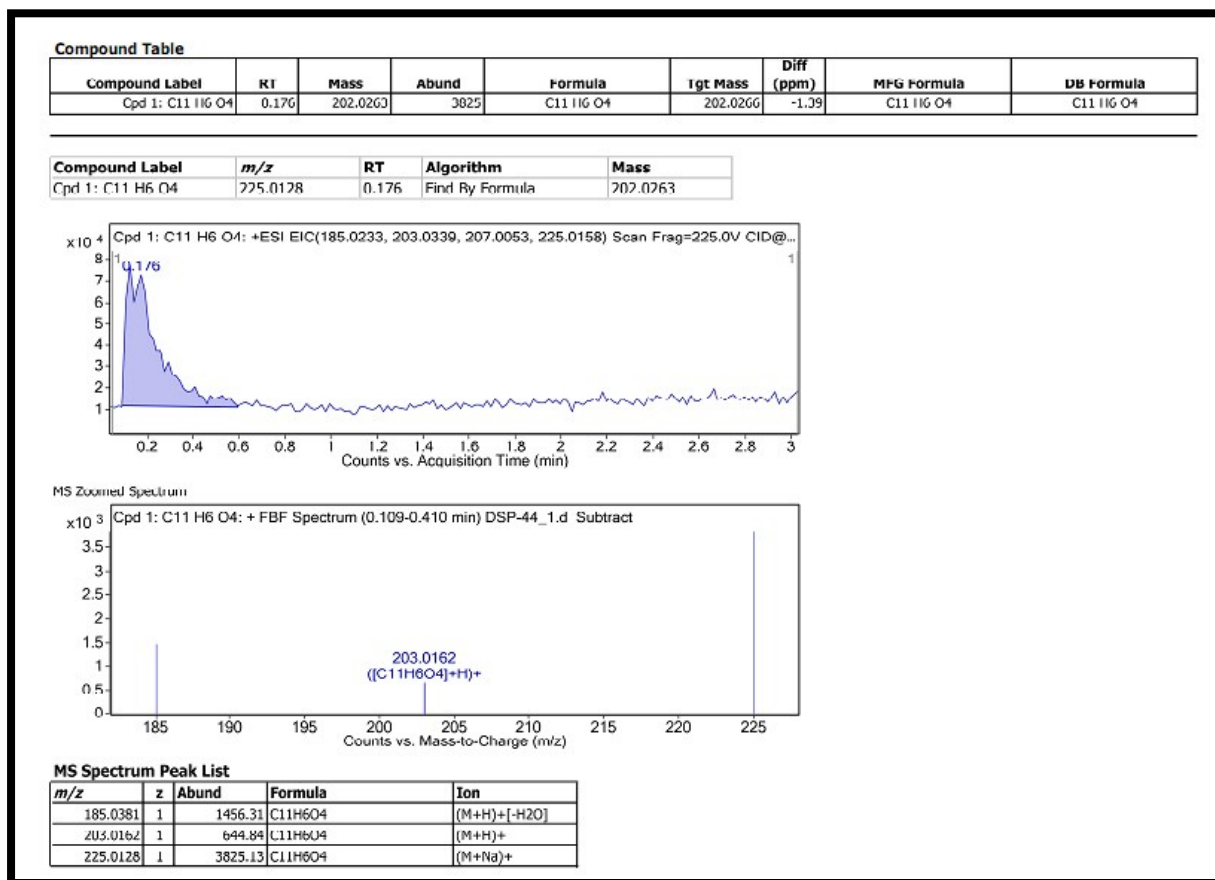
- Figure S1.** <sup>1</sup>H NMR spectra of 3-hydroxy-1, 4-dioxo-1, 4-dihydronaphthalene-2- S2  
carbaldehyde **2** recorded in CDCl<sub>3</sub>.
- Figure S2.** <sup>13</sup>C NMR spectra of 3-hydroxy-1, 4-dioxo-1, 4-dihydronaphthalene-2- S3  
carbaldehyde **2** recorded in CDCl<sub>3</sub>.
- Figure S3.** Mass spectra of 3-hydroxy-1, 4-dioxo-1, 4-dihydronaphthalene-2- S4  
carbaldehyde **2**
- Figure S4.** <sup>1</sup>H NMR spectra of 2-((E)-((3-hydroxy-1,4-dioxo-1,4-dihydronaphthalen- S5  
2-yl)methylene)amino)-3-((E)-((1-hydroxy-3,4-dioxo-3,4-  
dihydronaphthalen-2-yl)methylene)amino)malenonitrile **L** recorded in  
CDCl<sub>3</sub>.
- Figure S5.** <sup>13</sup>C NMR spectra of 2-((E)-((3-hydroxy-1,4-dioxo-1,4-dihydronaphthalen- S6  
2-yl)methylene)amino)-3-((E)-((1-hydroxy-3,4-dioxo-3,4-  
dihydronaphthalen-2-yl)methylene)amino)malenonitrile **L** recorded in  
CDCl<sub>3</sub>.
- Figure S6.** Mass spectra of 2-((E)-((3-hydroxy-1,4-dioxo-1,4-dihydronaphthalen-2- S7  
yl)methylene)amino)-3-((E)-((1-hydroxy-3,4-dioxo-3,4-  
dihydronaphthalen-2-yl)methylene)amino)malenonitrile **L**.
- Figure S7.** <sup>1</sup>H NMR spectra of **L+Hg<sup>2+</sup>** complex recorded in CDCl<sub>3</sub>. S8
- Figure S8.** <sup>13</sup>C NMR spectra of **L+Hg<sup>2+</sup>** complex recorded in CDCl<sub>3</sub>. S9
- Figure S9.** Mass spectra of **L+Hg<sup>2+</sup>** complex. S10
- Figure S10.** Ratiometric calibration curve A<sub>595</sub>/A<sub>481</sub> as a function of the concentration S11  
of Hg<sup>2+</sup>.



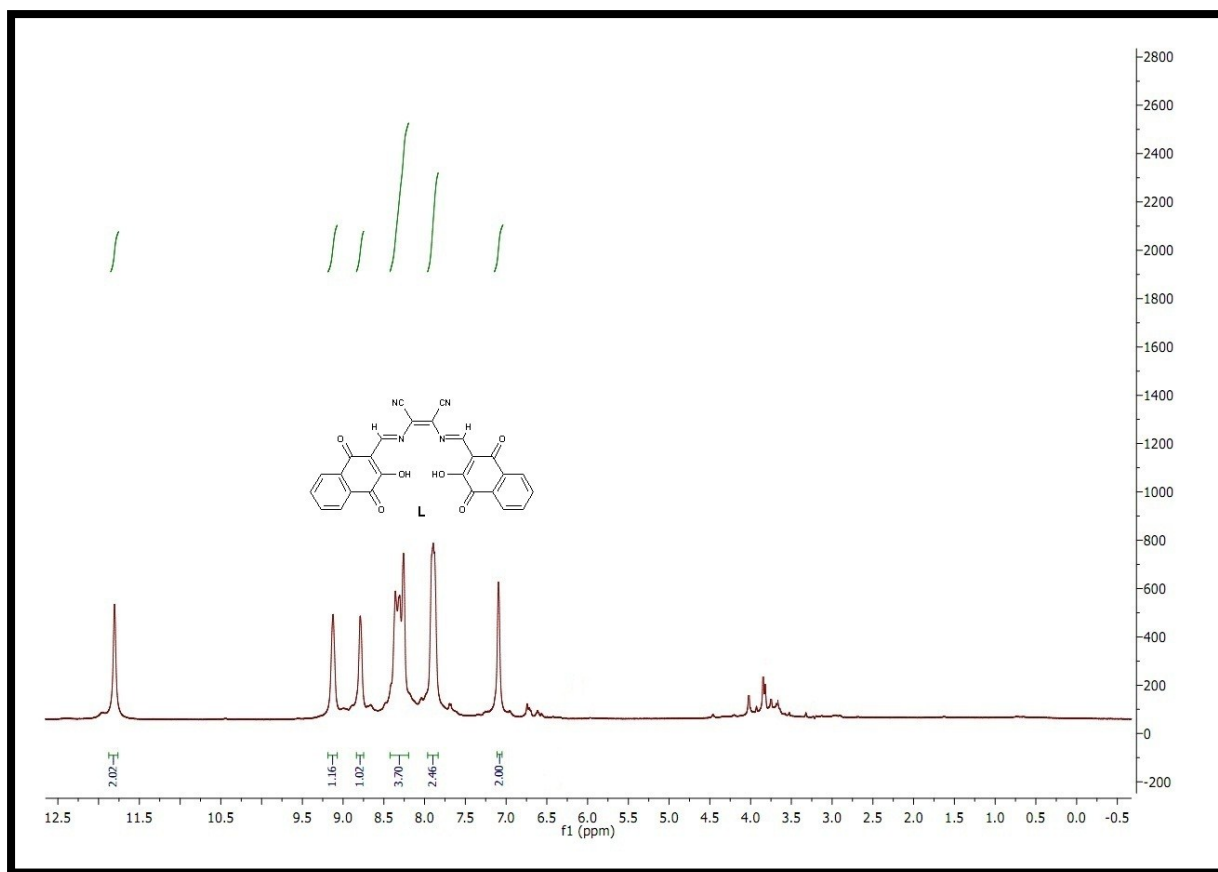
**Figure S1.** <sup>1</sup>H NMR spectra of 3-hydroxy-1,4-dioxo-1,4-dihydronaphthalene-2-carbaldehyde **2** recorded in CDCl<sub>3</sub>.



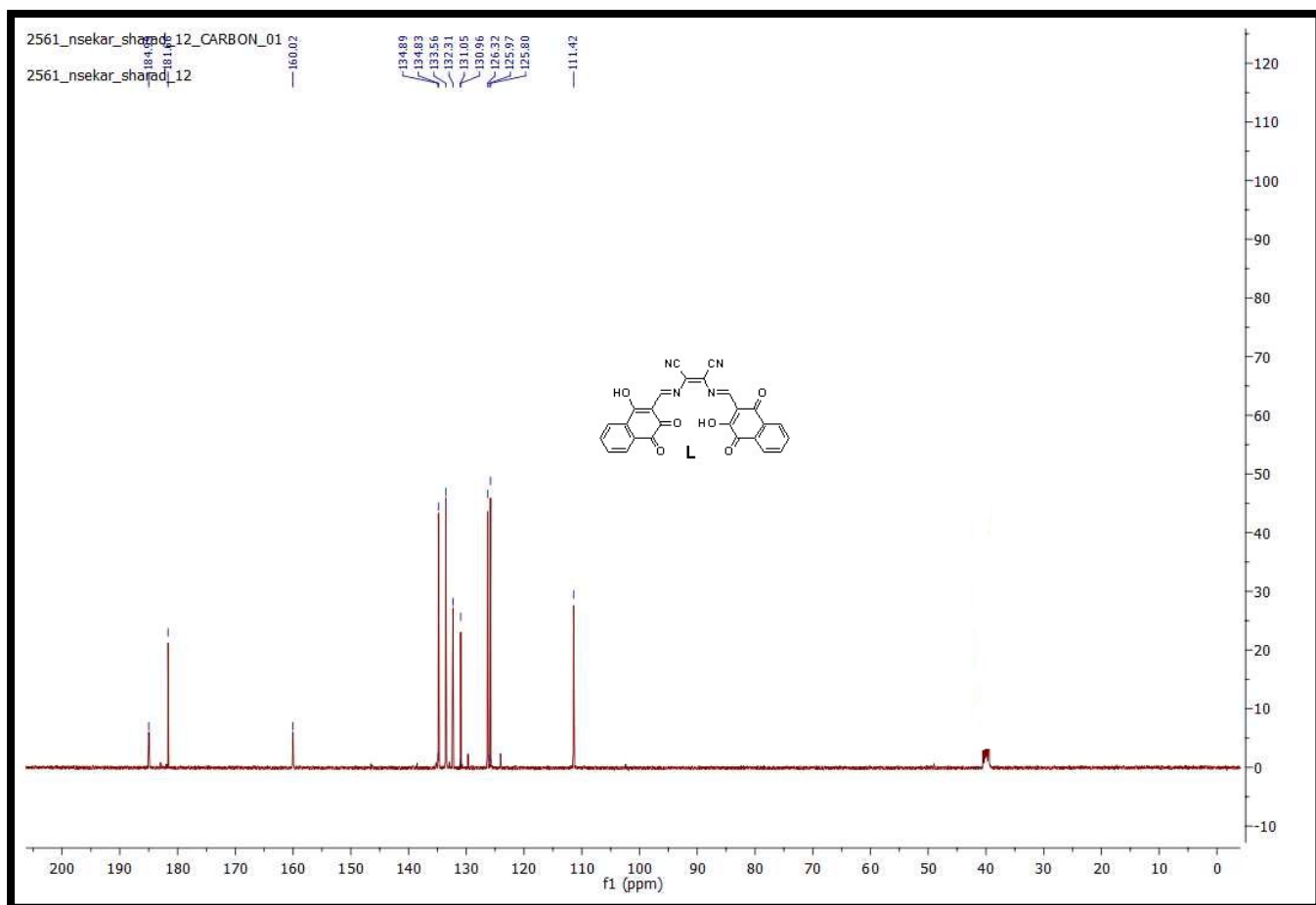
**Figure S2.**  $^{13}\text{C}$  NMR spectra of 3-hydroxy-1, 4-dioxo-1, 4-dihydronaphthalene-2-carbaldehyde **2** recorded in  $\text{CDCl}_3$ .



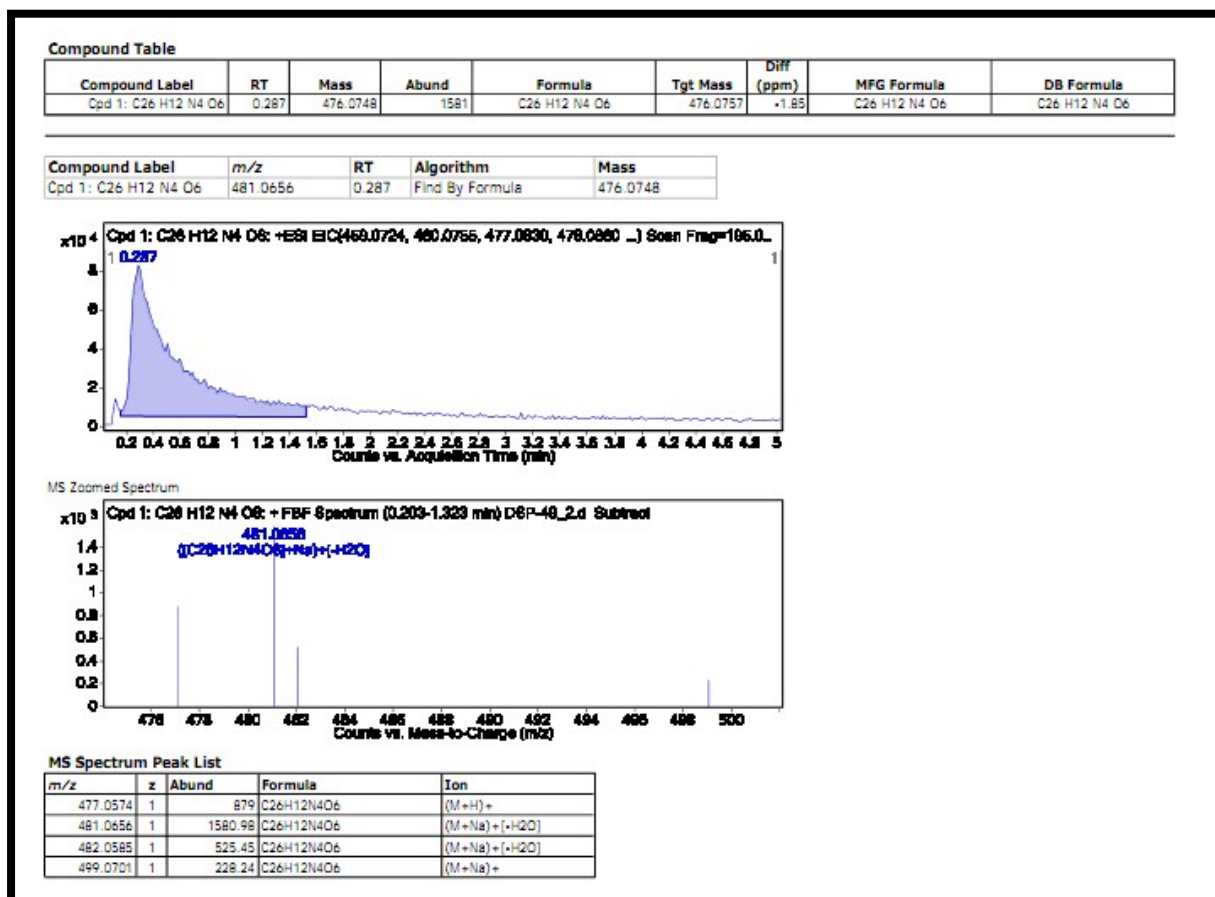
**Figure S3.** Mass spectra of 3-hydroxy-1, 4-dioxo-1, 4-dihydronaphthalene-2-carbaldehyde 2



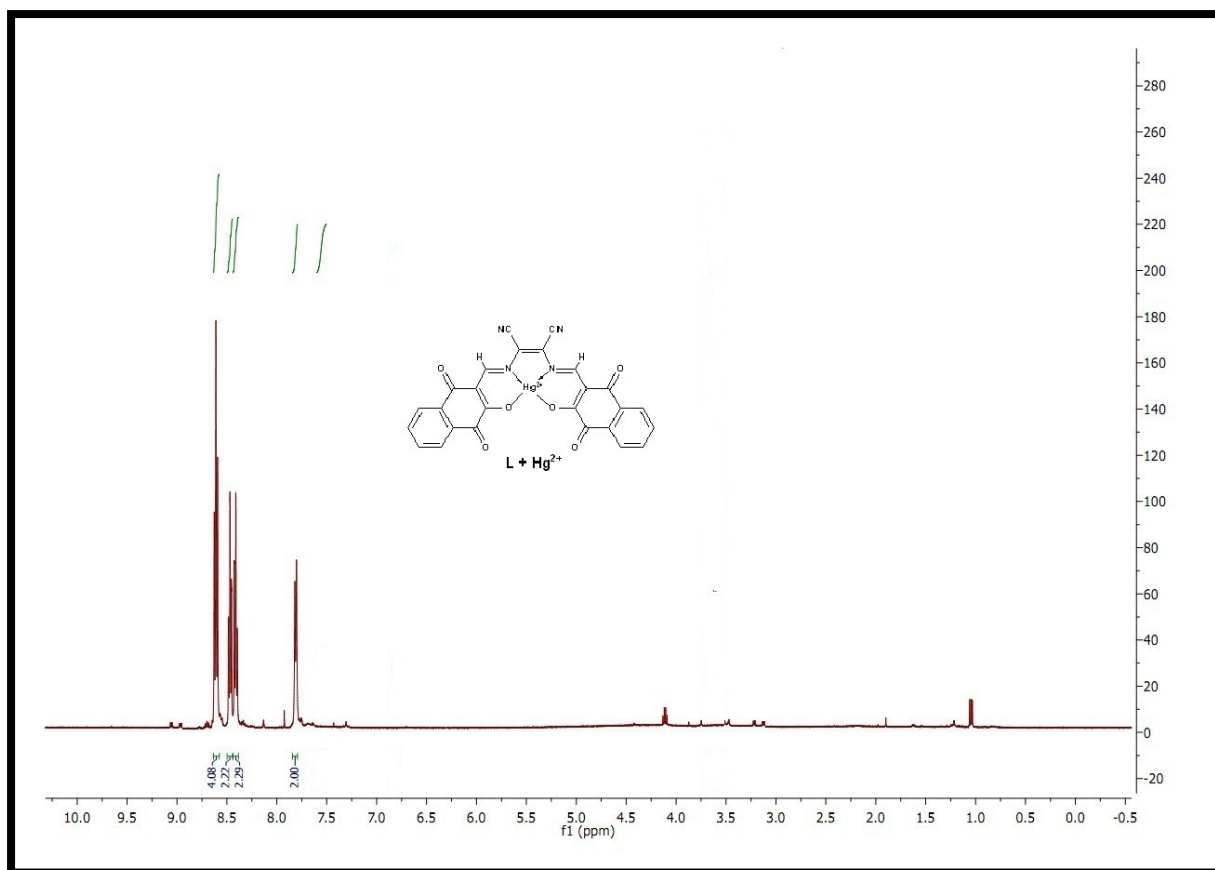
**Figure S4.**  $^1\text{H}$  NMR spectra of 2-((*E*)-((3-hydroxy-1,4-dioxo-1,4-dihydronaphthalen-2-yl)methylene)amino)-3-((*E*)-((1-hydroxy-3,4-dioxo-3,4-dihydronaphthalen-2-yl)methylene)amino)malenonitrile **L** recorded in  $\text{CDCl}_3$ .



**Figure S5.**  $^{13}\text{C}$  NMR spectra of 2-((E)-((3-hydroxy-1,4-dioxo-1,4-dihydronaphthalen-2-yl)methylene)amino)-3-((E)-((1-hydroxy-3,4-dioxo-3,4-dihydronaphthalen-2-yl)methylene)amino)malenonitrile **L** recorded in  $\text{CDCl}_3$ .

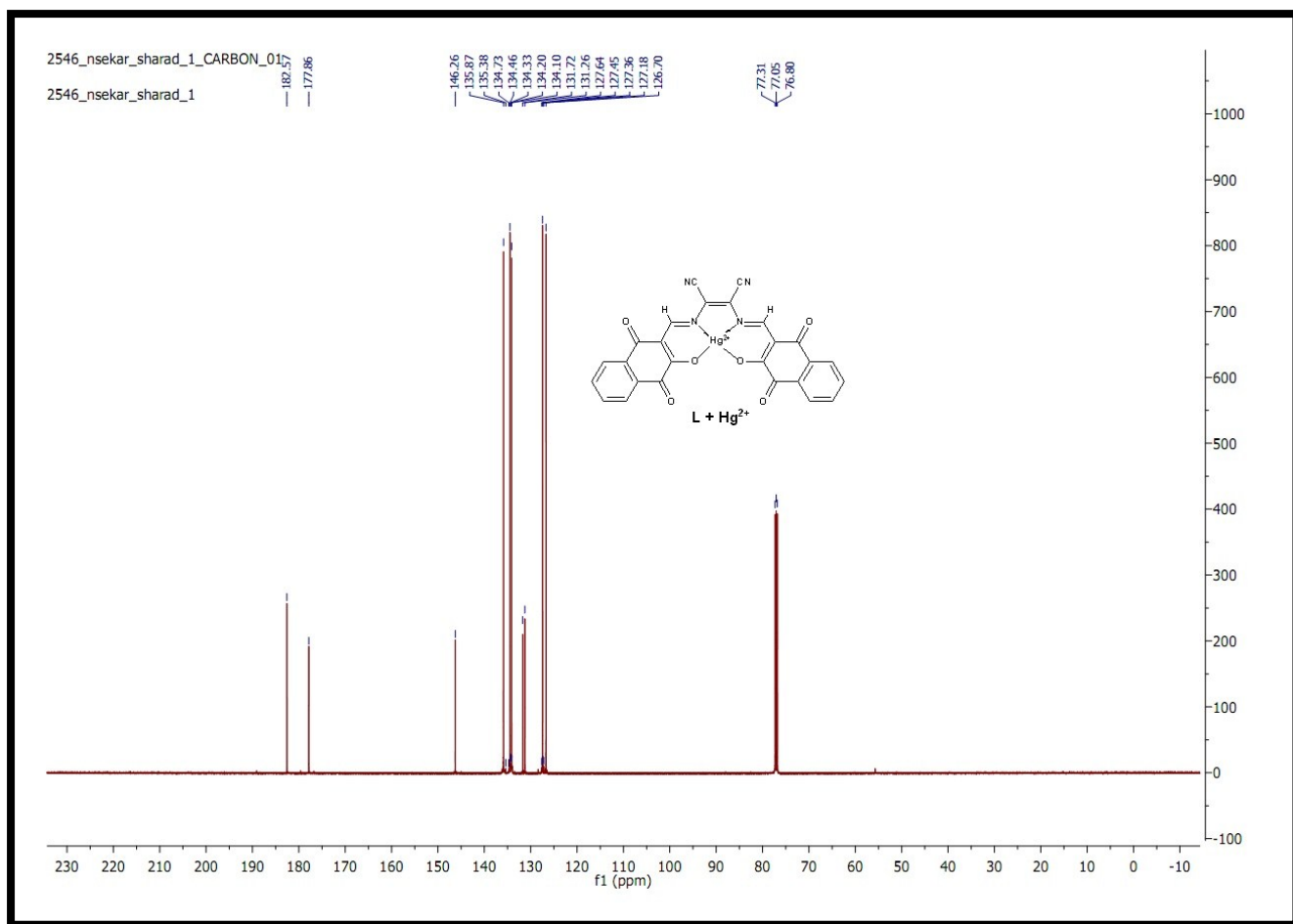


**Figure S6.** Mass spectra of 2-((E)-((3-hydroxy-1,4-dioxo-1,4-dihydronaphthalen-2-yl)methylene)amino)-3-((E)-((1-hydroxy-3,4-dioxo-3,4-dihydronaphthalen-2-yl)methylene)amino)malenonitrile L.



**Figure S7.**  $^1\text{H}$  NMR spectra of  $\text{L} + \text{Hg}^{2+}$  complex recorded in  $\text{CDCl}_3$ .





**Figure S8.**  $^{13}\text{C}$  NMR spectra of  $\text{L}+\text{Hg}^{2+}$  complex recorded in  $\text{CDCl}_3$ .

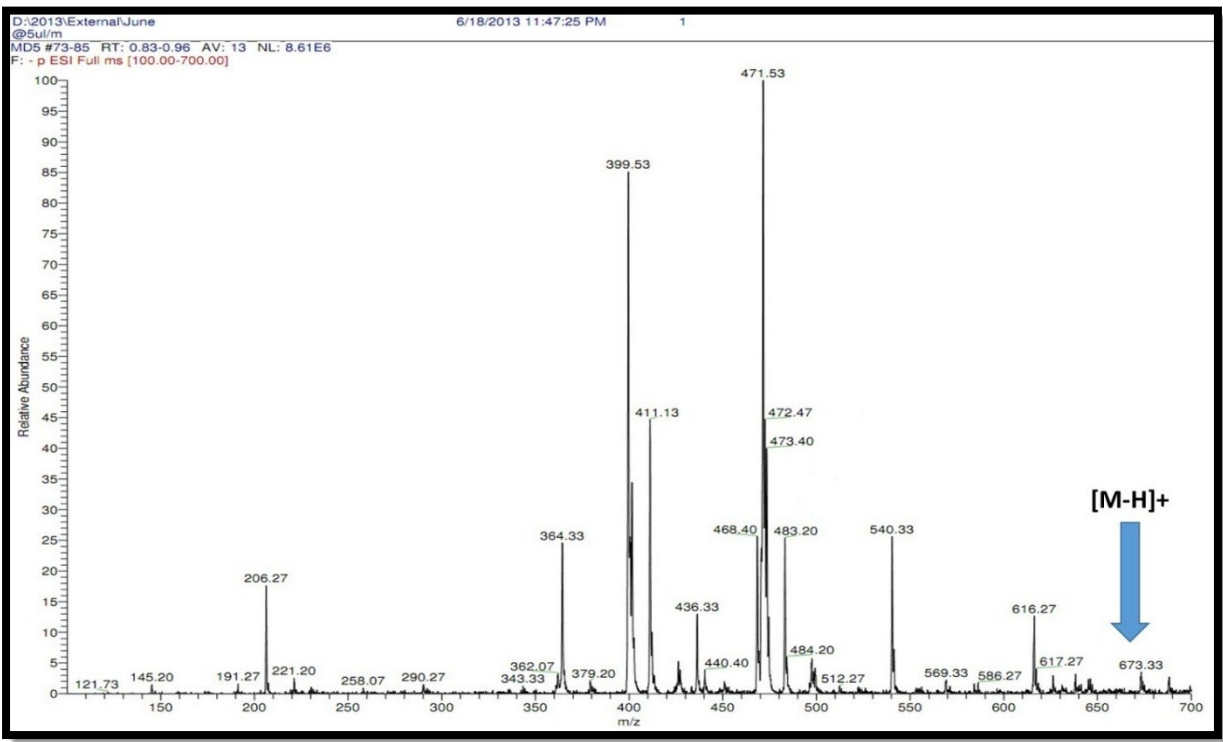
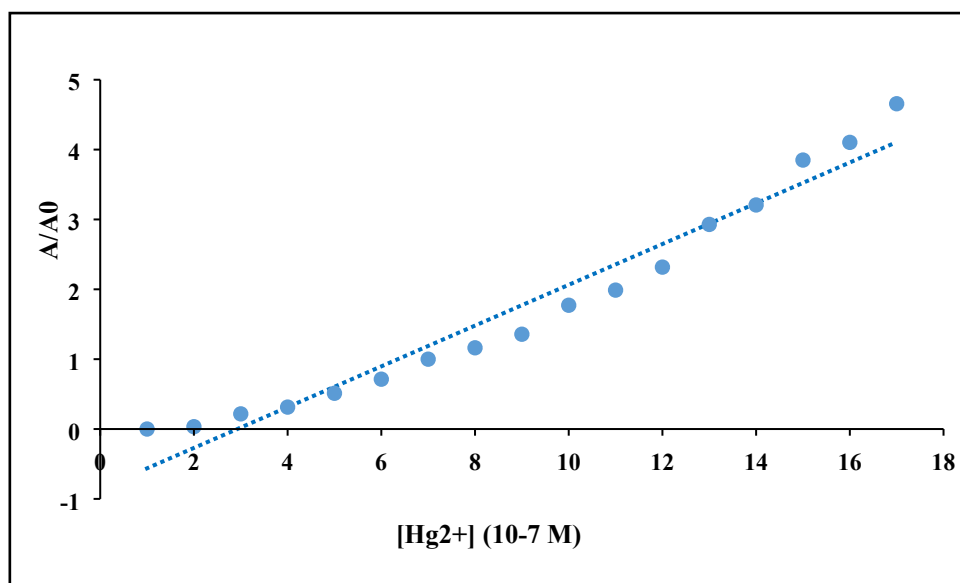


Figure S9. Mass spectra of L+Hg<sup>2+</sup> complex.



**Figure 10.** Ratiometric calibration curve  $A_{595}/A_{481}$  as a function of the concentration of  $\text{Hg}^{2+}$ .