

Supporting Information

High-performance ultraviolet photodetectors based on CdS/CdS:SnS₂ superlattice nanowires

Authors: Guangyang Gou^{a,b}, Guozhang Dai^{*a,b}, Chuan Qian^{a,b}, Yufeng Liu^c, Yan Fu^b, Zhenyang Tian^b, Yinke He^{a,b}, Lingan Kong^{a,b}, Junliang Yang^{a,b}, Jia Sun^{*a,b}, and Yongli Gao^{a,b,d}

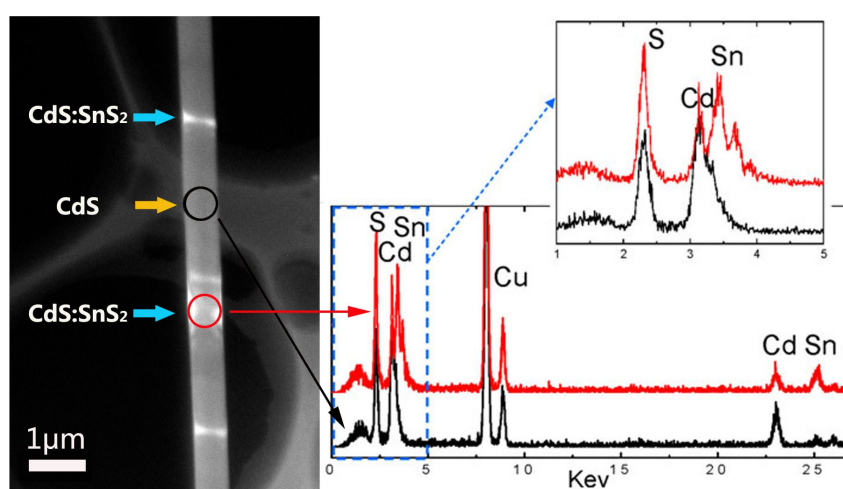


Figure S1. The position depend TEM image and related EDS profiles.



Figure S2. A typical bright-field optical image of the CdS/CdS:SnS₂ superlattice wire.