

Supplementary Information

Launching deep subwavelength bulk plasmon polaritons through hyperbolic metamaterials for surface imaging with tuneable ultra-short illumination depth

Weijie Kong,^a Wenjuan Du,^{a,b} Kaipeng Liu,^a Changtao Wang,^a Ling Liu,^a Zeyu Zhao,^a and Xiangang Luo^{*a}

^aState Key Laboratory of Optical Technologies on Nano-Fabrication and Micro-Engineering, Institute of Optics and Electronics, Chinese Academy of Science, P.O. Box 350, Chengdu 610209, China.

^bUniversity of Chinese Academy of Sciences, Beijing 100049, China.

* Email address: lxg@ioe.ac.cn

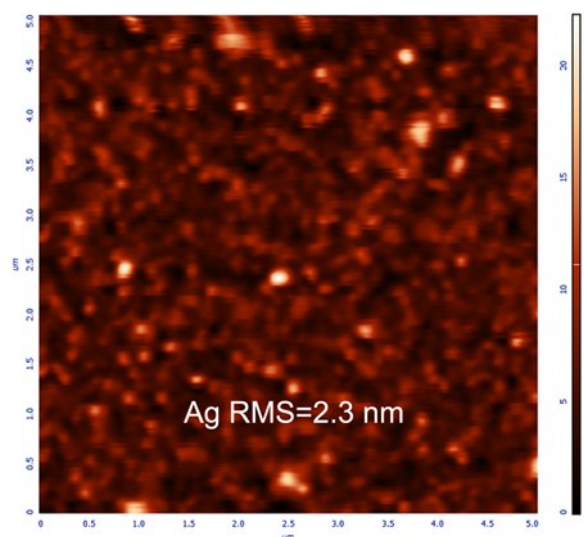


Fig. S1 The AFM measured morphology image of outmost Ag film of multilayer structure (RMS=2.3 nm).

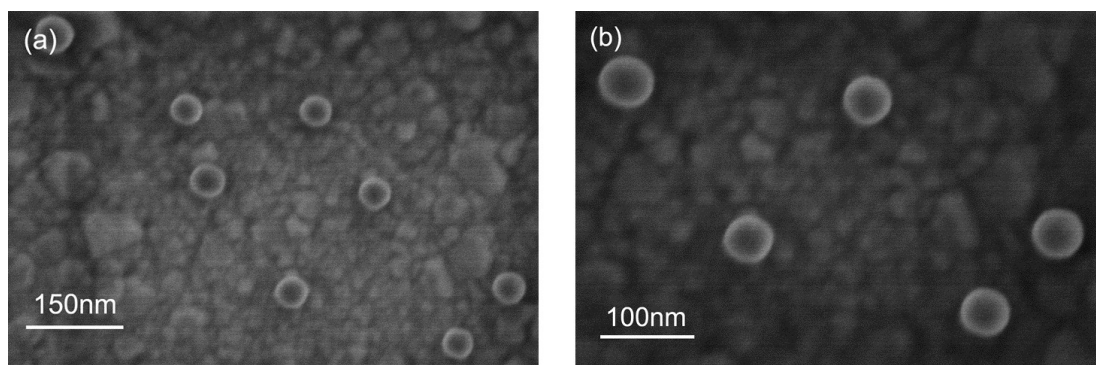


Fig. S2 The SEM images of the fluorescent nanoparticles above the outmost Ag film of multilayer structure with different scales.