

Support Information file:

Growth of single-layer boron nitride dome-shaped nanostructures catalysed by iron clusters

A. La Torre,^{a,b*} E. H. Åhlgren,^b M. W. Fay,^c F. Ben Romdhane,^a S. T. Skowron,^b C. Parmenter,^b A. J. Davies,^c J. Jouhannaud,^a G. Pourroy,^a A. N. Khlobystov,^{b,c} P. D. Brown,^{c,d} E. Besley,^{b*} and F. Banhart^{a*}

^aInstitut de Physique et Chimie des Matériaux de Strasbourg, UMR 7504 CNRS, Université de Strasbourg, 23 rue du Loess, 67034 Strasbourg, France.

^bSchool of Chemistry, University of Nottingham, University Park, Nottingham, NG7 2RD, UK.

^cNanoscale and Microscale Research Centre, University of Nottingham, University Park, Nottingham, NG7 2RD, UK.

^dDepartment of Mechanical, Materials and Manufacturing Engineering, Faculty of Engineering, University of Nottingham, University Park, Nottingham, NG7 2RD, UK.

Corresponding Authors:

[e-mail:alessandro.latorre@nottingham.ac.uk](mailto:alessandro.latorre@nottingham.ac.uk)

[e-mail:florian.banhart@ipcms.unistra.fr](mailto:florian.banhart@ipcms.unistra.fr)

[e-mail:elena.besley@nottingham.ac.uk](mailto:elena.besley@nottingham.ac.uk)

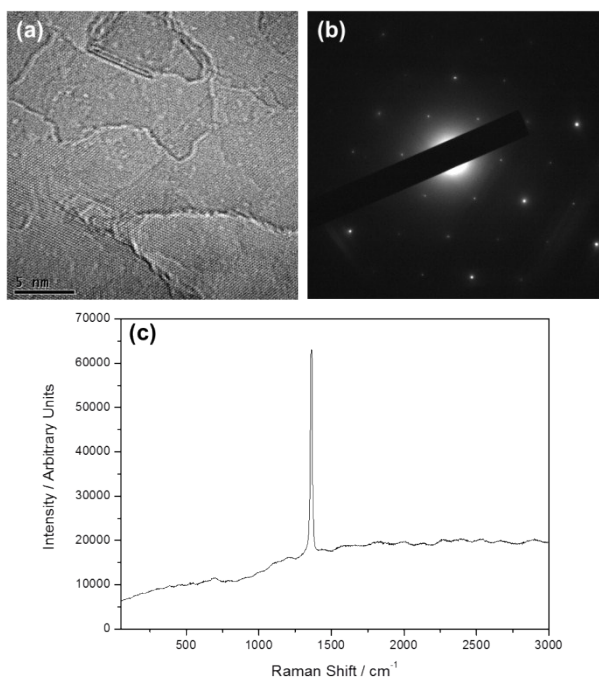


Figure S1: (a) Bright field TEM image of an FLBN flake; (b) associated SADP showing hexagonal symmetry, typical for the *h*-BN phase; and (c) Raman spectrum of the FLBN flake.

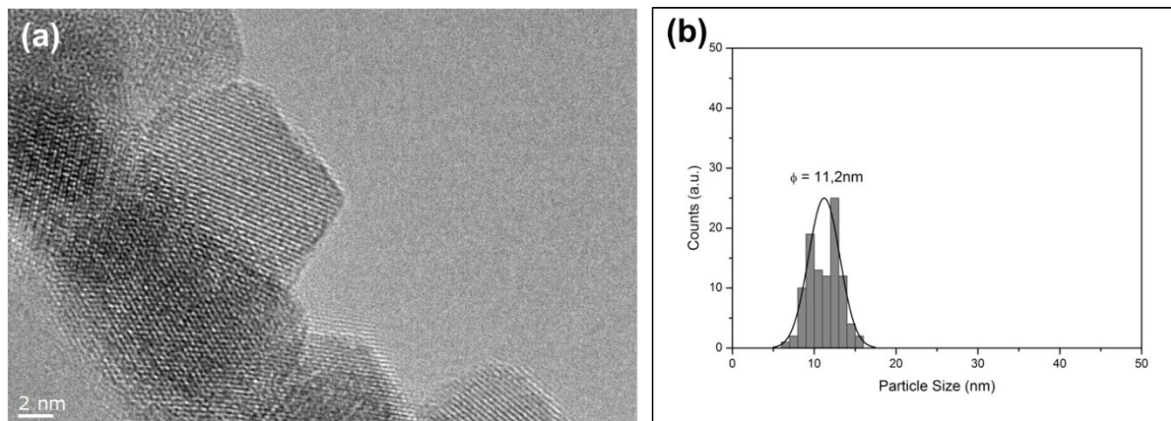


Figure S2: HRTEM of Fe₂O₃ NP with an associated particle size histogram.

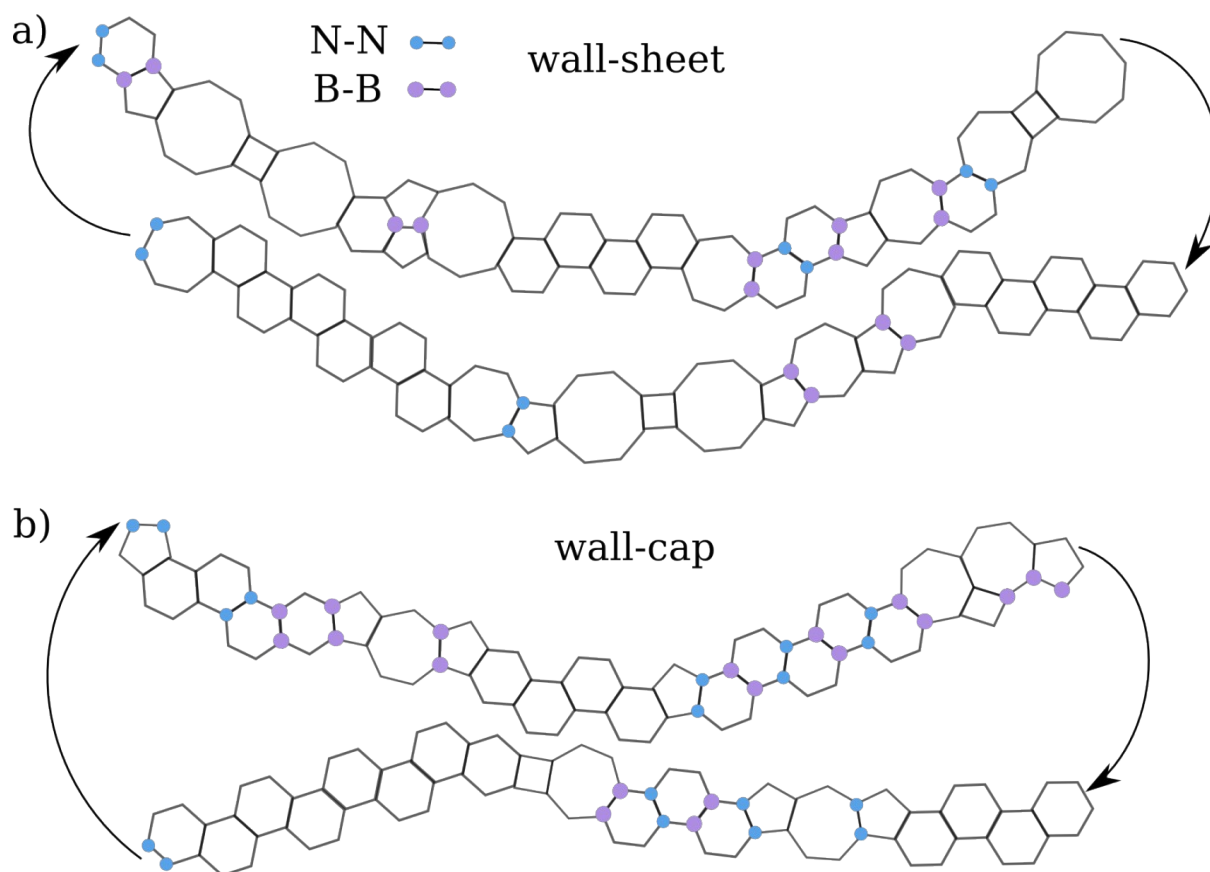


Figure S3: The exact atomic structures circling the bottom (wall-sheet) and top (wall-cap) of the dome shaped structure modelled with molecular dynamics simulations, shown in Figure 5 of the paper. The highlighted blue and purple circles represent the atoms forming the unfavourable N-N and B-B bonds, respectively.