

Electronic Supplementary Material (ESI) for Nanoscale.

This journal is © The Royal Society of Chemistry 2015

**Wall-like hierarchical metal oxide nanosheet arrays grown on carbon
cloth for excellent supercapacitor electrodes**

Zongyu Huang^{a,b, ‡}, Zhen Zhang^{b, ‡}, Xiang Qi^{a,b}, Xiaohui Ren^b, Guanghua Xu^b, Pengbo Wan^{c,*},
Xiaoming Sun^c, Han Zhang^{a,*}

*^aSZU-NUS Collaborative Innovation Center for Optoelectronic Science and
Technology, Key Laboratory of Optoelectronic Devices and Systems of Ministry of
Education and Guangdong Province, College of Optoelectronic Engineering,
Shenzhen University, Shenzhen, P. R. China*

E-mail: hzhang@szu.edu.cn

*^bHunan Key Laboratory of Micro-Nano Energy Materials and Devices, Laboratory
for Quantum Engineering and Micro-Nano Energy Technology and School of Physics
and Optoelectronics, Xiangtan University, Hunan 411105, P. R. China*

*^cState Key Laboratory of Chemical Resource Engineering, P.O. Box 98, Beijing
University of Chemical Technology, Beijing 100029, P.R. China*

E-mail: pbwan@mail.buct.edu.cn

[‡]This authors contributed equally.

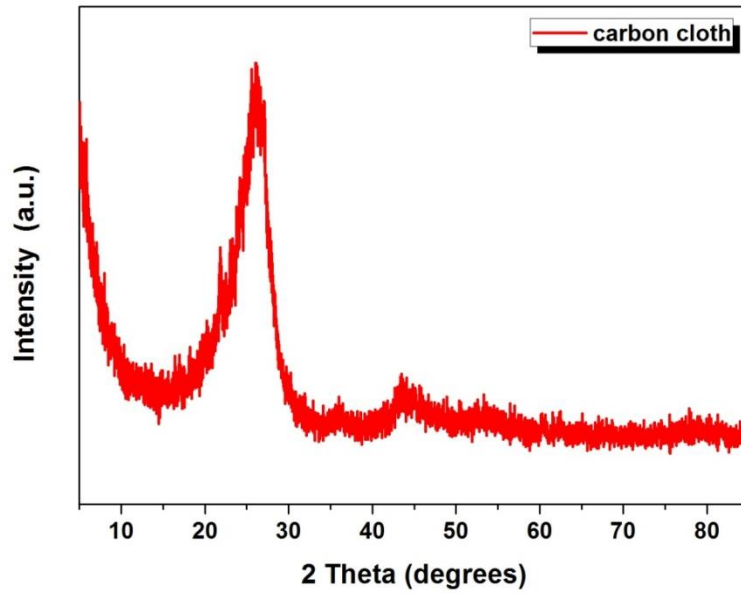


Fig. S1 XRD pattern of pure carbon cloth substrate.

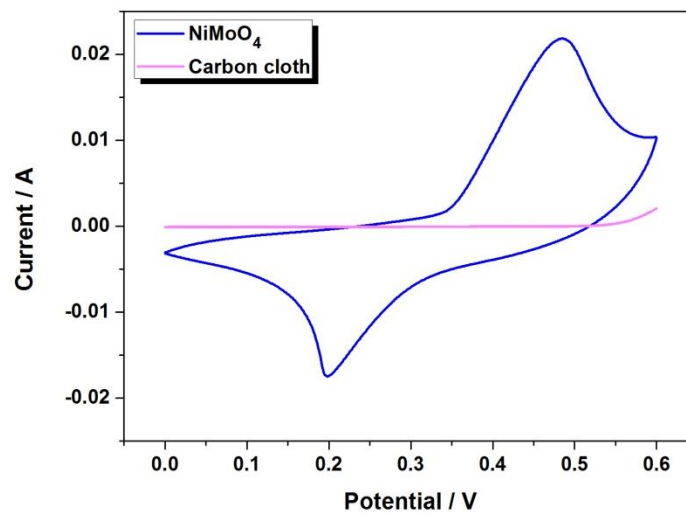


Fig. S2 The comparison of the NiMoO₄ nanosheets and bare carbon cloth at the scan rate of 10 mV/s.

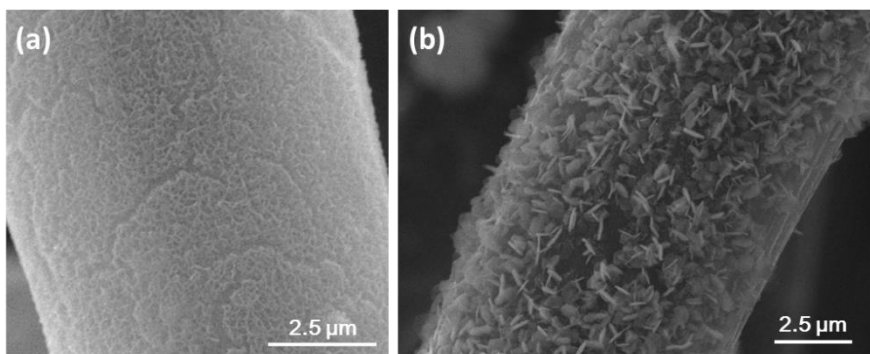


Fig. S3 SEM images of NiMoO₄ and CoMoO₄ electrodes after cycling test.