

Electronic Supplementary Information (ESI)

**Targeted Imaging of EGFR Overexpressed Cancer Cells by
Brightly Fluorescent Nanoparticles Conjugated with Cetuximab**

Meng Gao,^{‡a} Huifang Su,^{‡b} Gengwei Lin,^a Shiwu Li,^a Xingsu Yu,^b Anjun Qin,^a Zujin Zhao,^{*a} Zhenfeng Zhang,^{*b} Ben Zhong Tang^{*acd}

^a State Key Laboratory of Luminescent Materials and Devices, South China University of Technology, Guangzhou 510640, China

^b Sun Yat-sen University Cancer Center, State Key Laboratory of Oncology in South China, Collaborative Innovation Center for Cancer Medicine, Guangzhou 510060, China

^c Department of Chemistry, The Hong Kong University of Science & Technology, Clear Water Bay, Kowloon, Hong Kong, China

^d Hong Kong Branch of Chinese National Engineering Research Center for Tissue Restoration and Reconstruction, Hong Kong, China

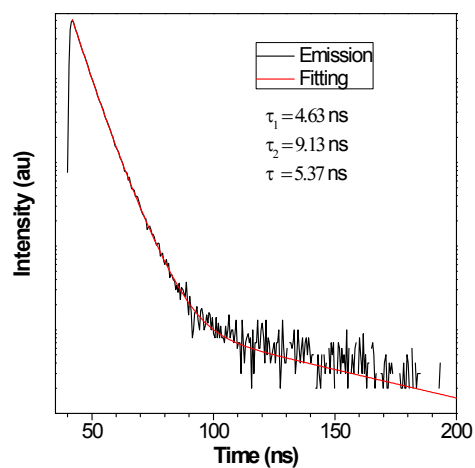


Figure S1. Fluorescence lifetime of *t*-BuPITBT-TPE NPs ($2 \mu\text{g mL}^{-1}$ of *t*-BuPITBT-TPE) in aqueous solution.

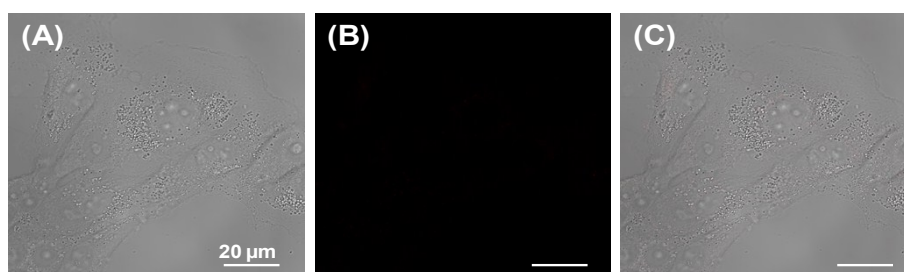


Figure S2. The CLSM images of HCC827 cells after pre-treating with C225 ($100 \mu\text{g mL}^{-1}$) at $37 \text{ }^\circ\text{C}$ for 2 h and then incubation with *t*-BuPITBT-TPE NPs ($2 \mu\text{g mL}^{-1}$ of *t*-BuPITBT-TPE) at $37 \text{ }^\circ\text{C}$ for 8 h. (A) Bright-field image; (B) Fluorescent image; (C) The merged image. Scale bar = $20 \mu\text{m}$.