

Supporting Information

One-pot bioinspired synthesis of all-inclusive protein-protein nanoflowers for point-of-care bioassay: Detection of *E. coli* O157:H7 from milk

Ranfeng Ye^{a,b}, Chengzhou Zhu^b, Yang Song^b, Junhua Song^b, Shaofang Fu^b, Qian Lu^b, Xu Yang^a, Mei-Jun Zhu^c, Dan Du^{a,b*}, He Li^{b,d*}, Yuehe Lin^{b*}

a. College of Chemistry and College of Life Sciences, Central China Normal University, Wuhan 430079, China.

b. School of Mechanical and Material Engineering, Washington State University, Pullman, Washington 99163, United States.

c. School of Food Science, Washington State University, Pullman, Washington 99163, United States

d. School of Biological Sciences and Technology, University of Jinan, Jinan 250022, China.

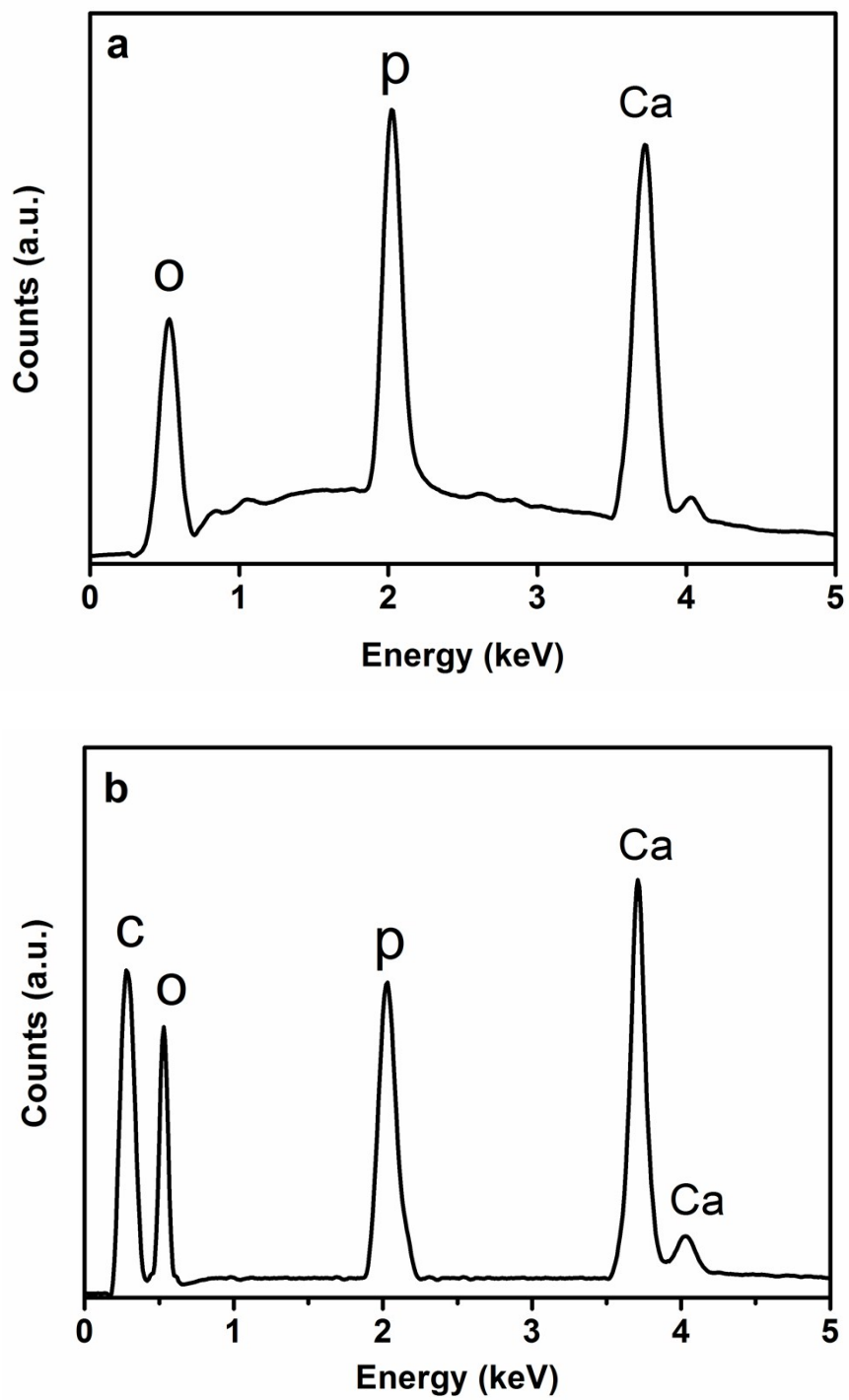


Figure S1. EDS spectra of $\text{CaHPO}_4 \cdot 2\text{H}_2\text{O}$ (a) and Con A-invertase- CaHPO_4 hybrid nanoflowers (b).