

Electronic Supplementary Information for Cryo-Electron Tomography Investigation of Serum Albumin-Camouflaged Tobacco Mosaic Virus Nanoparticles

*Neetu M. Gulati, ^{a,b} Andrzej S. Pitek, ^c Nicole F. Steinmetz, ^{*c,d,e,f,g} Phoebe L. Stewart^{*a,b}*

^aDepartment of Pharmacology, ^bCleveland Center for Membrane and Structural Biology,
^cDepartment of Biomedical Engineering, ^dDepartment of Radiology, ^eDepartment of Materials
Science and Engineering, ^fDepartment of Macromolecular Science and Engineering, ^gCase
Comprehensive Cancer Center, Division of General Medical Sciences-Oncology, Case Western
Reserve University, Cleveland, Ohio.

**Correspondence should be addressed to: nicole.steinmetz@case.edu and pls47@case.edu*

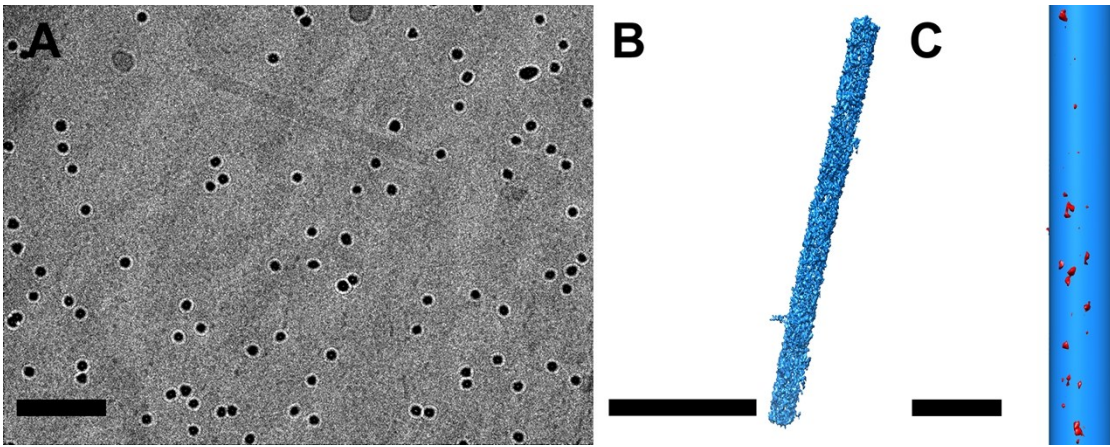


Fig. S1. Cryo-electron tomography analysis of naked TMV nanoparticles. (A) 0° tilt image of TMV-lys. (Scale bar = 100 nm). (B) Three-dimensional representation of TMV tomogram. (Scale bar = 100 nm). (C) Single TMV rod (red) with added 300 nm x 18 nm cylinder (blue) indicating that not much density surrounds the bare TMV rod. (Scale bar = 25 nm).

MOVIE LEGENDS

Movie S1. Aligned tilt series of SA-TMV processed using IMOD. Electron dense 10 nm gold fiducials are visible.

Movie S2. Z-slices through reconstructed tomogram of SA-TMV processed using IMOD. Electron dense 10 nm gold fiducials are visible.