

Supporting information

SiO₂-coated LiNi_{0.915}Co_{0.075}Al_{0.01}O₂ cathode material for rechargeable Li-ion batteries

Pengfei Zhou, Zhen Zhang, Huanju Meng, Yanying Lu, Jun Cao, Fangyi Cheng,
Zhanliang Tao*, Jun Chen*

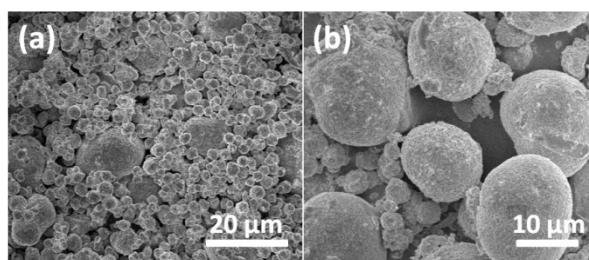


Fig. S1. SEM images of pristine NCA.

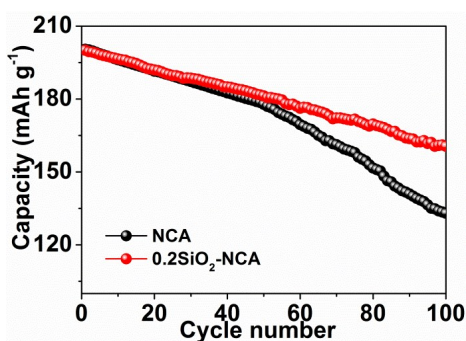


Fig. S2. Cycling performance of pristine NCA and 0.2SiO₂-NCA.

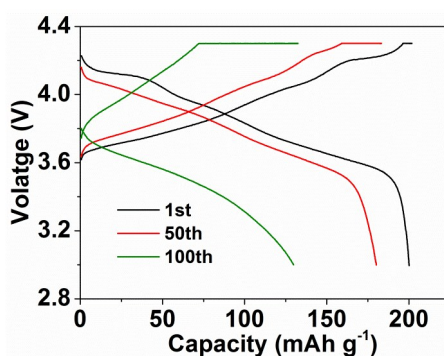


Fig. S3. Typical charge/discharge curves of pristine NCA.

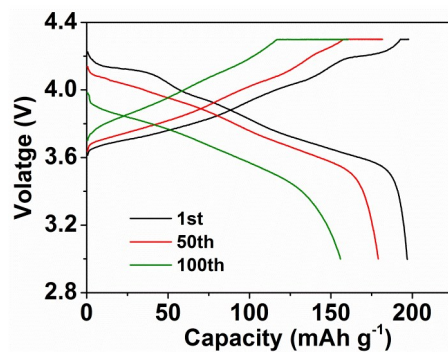


Fig. S4. Typical charge/discharge curves of 0.2SiO₂-NCA.

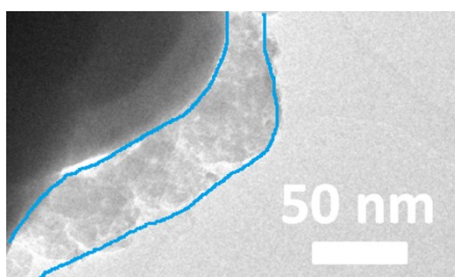


Fig. S5. TEM images of 0.2SiO₂-NCA after cycles.