

Support information

Highly Flexible, Transparent and Conducting CuS-Nanosheet Networks for Flexible Quantum-Dot Solar Cells

Zijie Xu^a, Teng Li^a, Fayin Zhang^a, Xiaodan Hong^a, Shuyao Xie^a, Meidan Ye^a, Wenxi Guo^{*a}, and Xiangyang Liu^{ab}

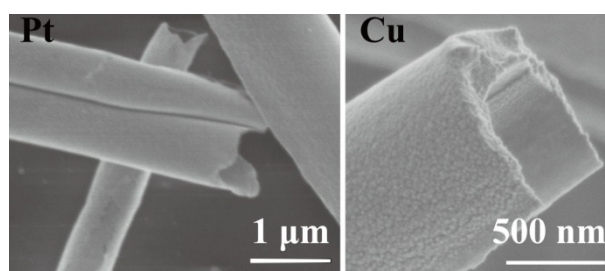


Figure S1. SEM images of the sectional view of Pt and Cu nanotrrough.

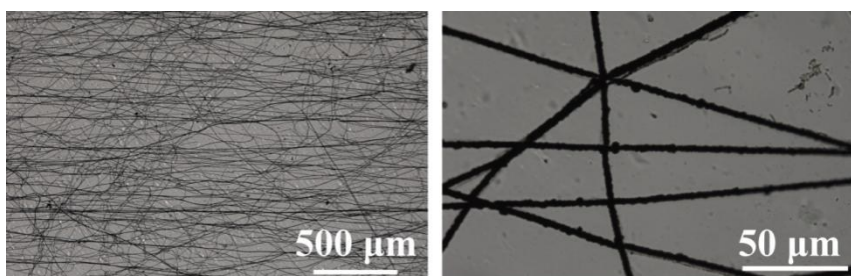


Figure S2. SEM images of CuS nanotrrough networks with different magnifications.

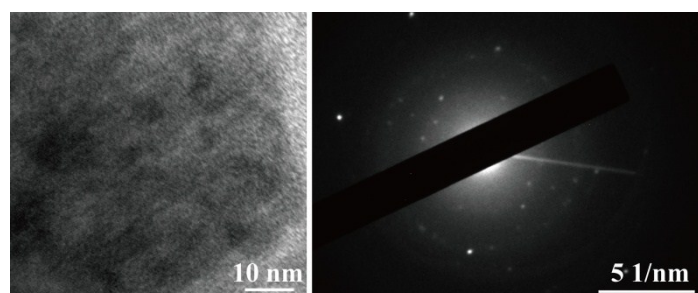


Figure S3. TEM and selected-area electron diffraction (SAED) images of sputtered CuS film.

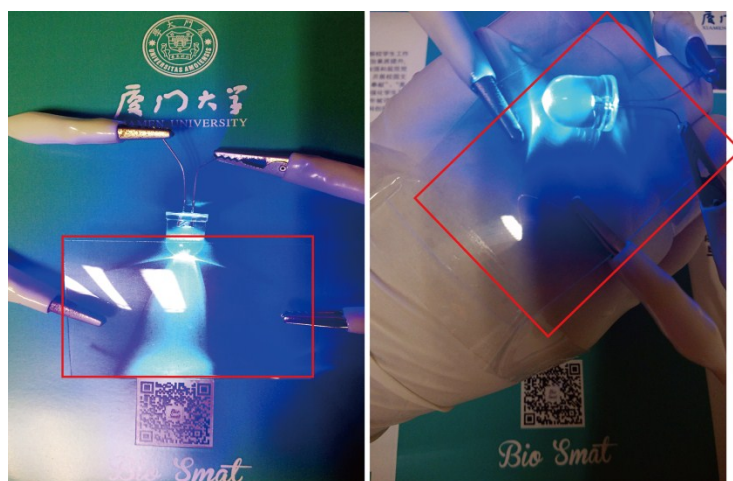


Figure S4. The photographs of the CuS NS networks TCE after crushing and unfolding, the CuS NS networks TCE remained conducting.