

*Supporting Information*

**Synthesis of Indole-annulated Sulfur Heterocycles using Copper-Catalysed**

**C-N Coupling and Palladium-Catalysed Direct Arylation**

Ganesh M. Shelke,<sup>a</sup> Mukund Jha<sup>b,\*</sup> and Anil Kumar<sup>a,\*</sup>

<sup>a</sup>Department of Chemistry, Birla Institute of Technology and Science, Pilani,

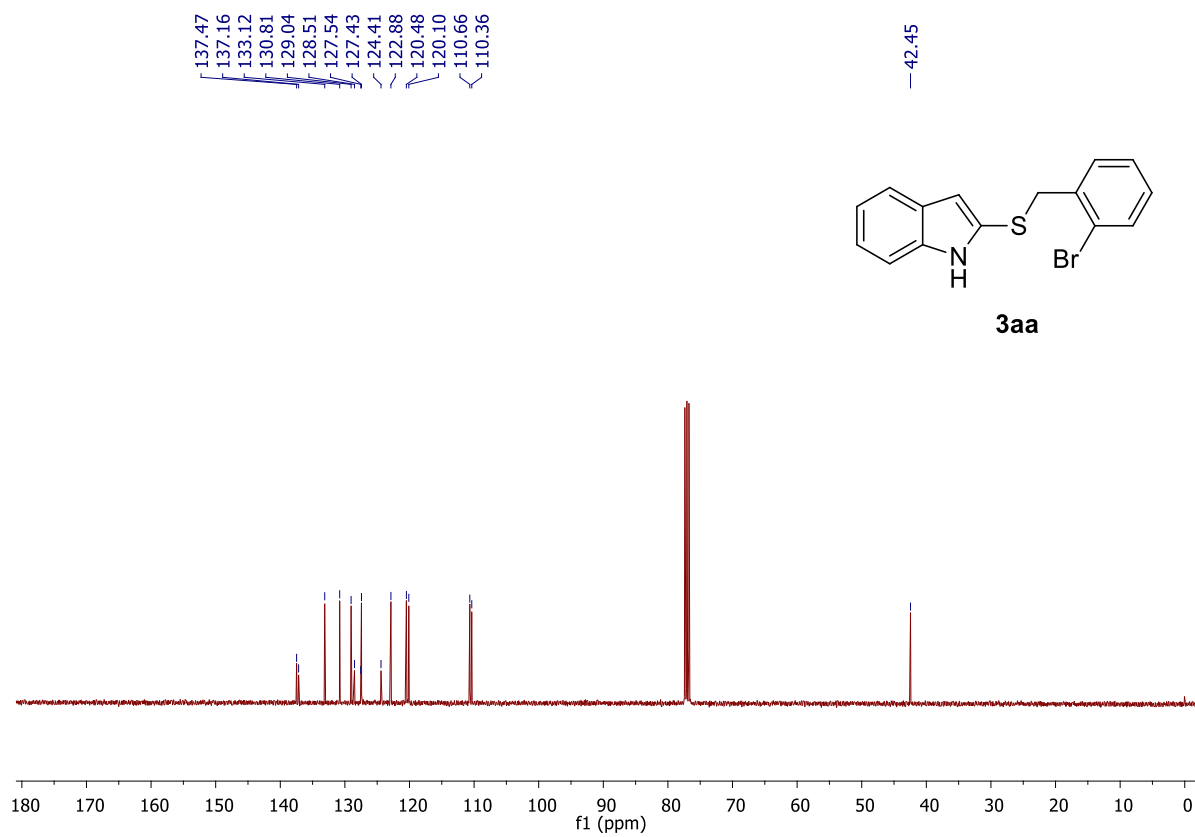
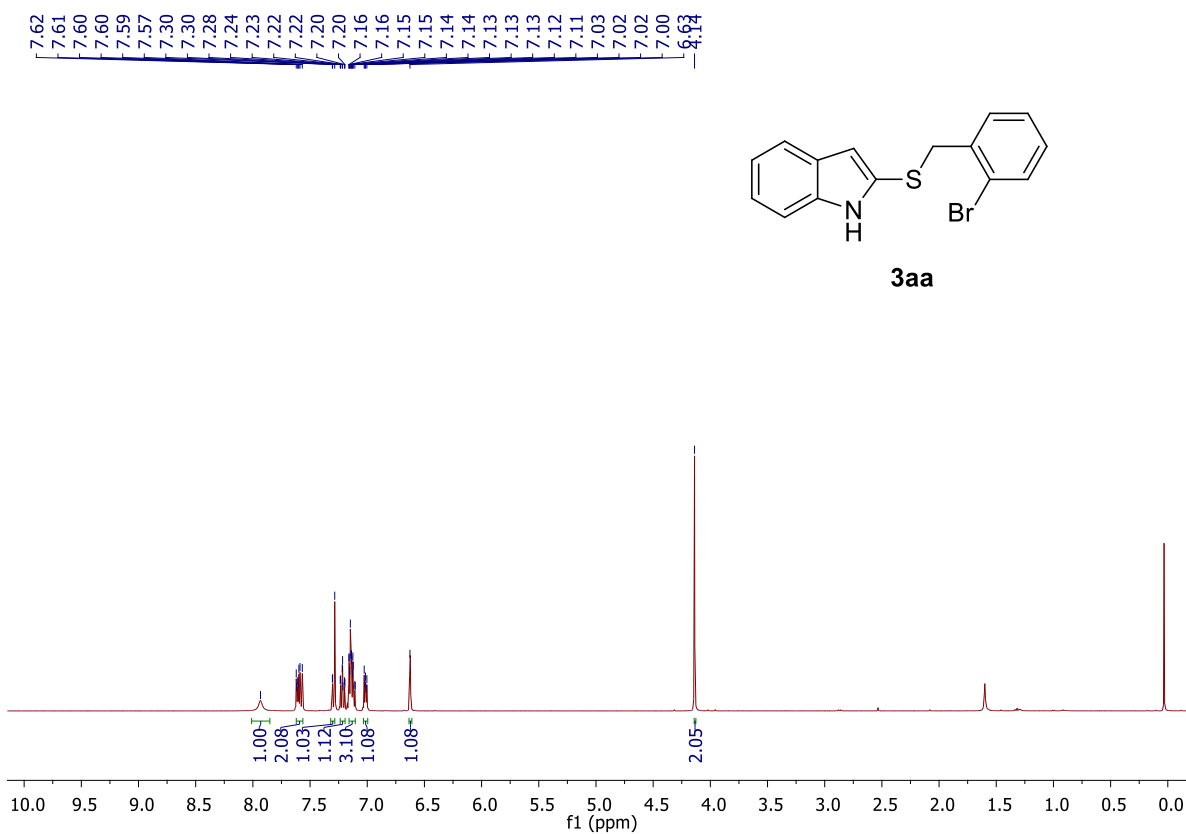
333031, Rajasthan, India

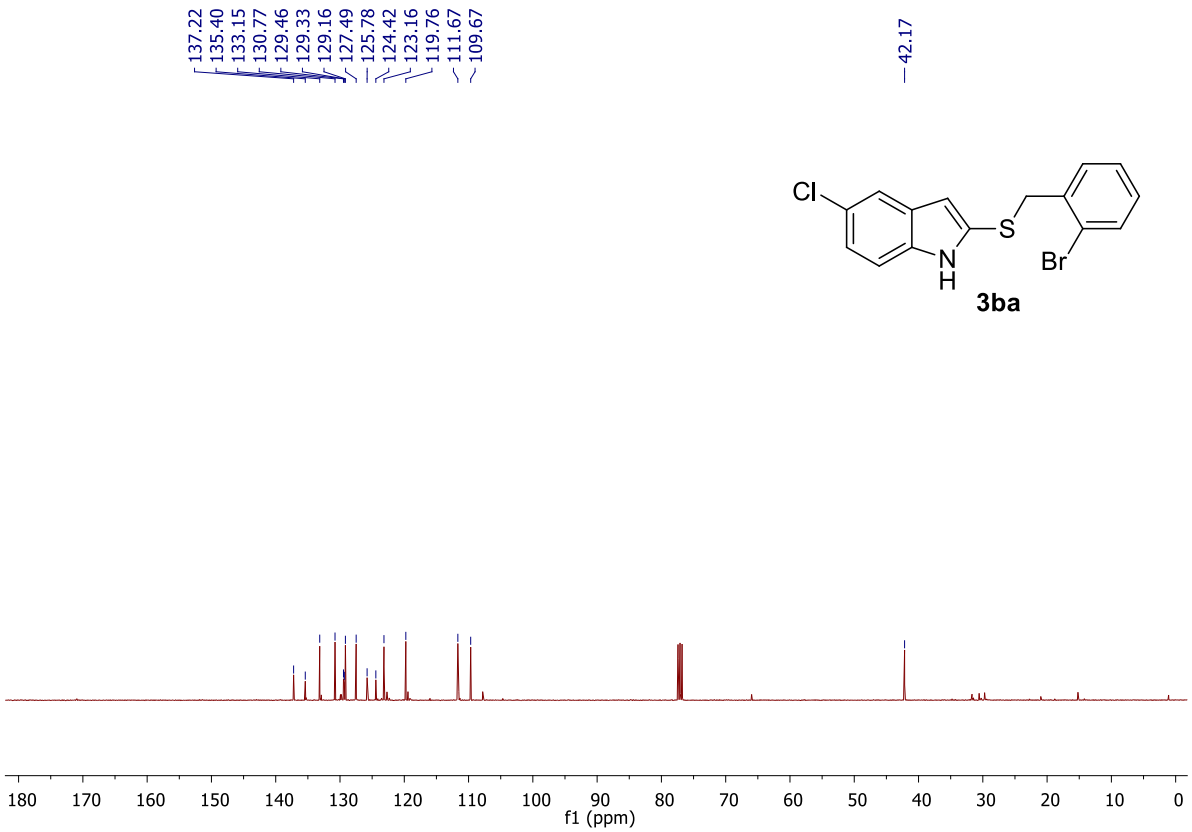
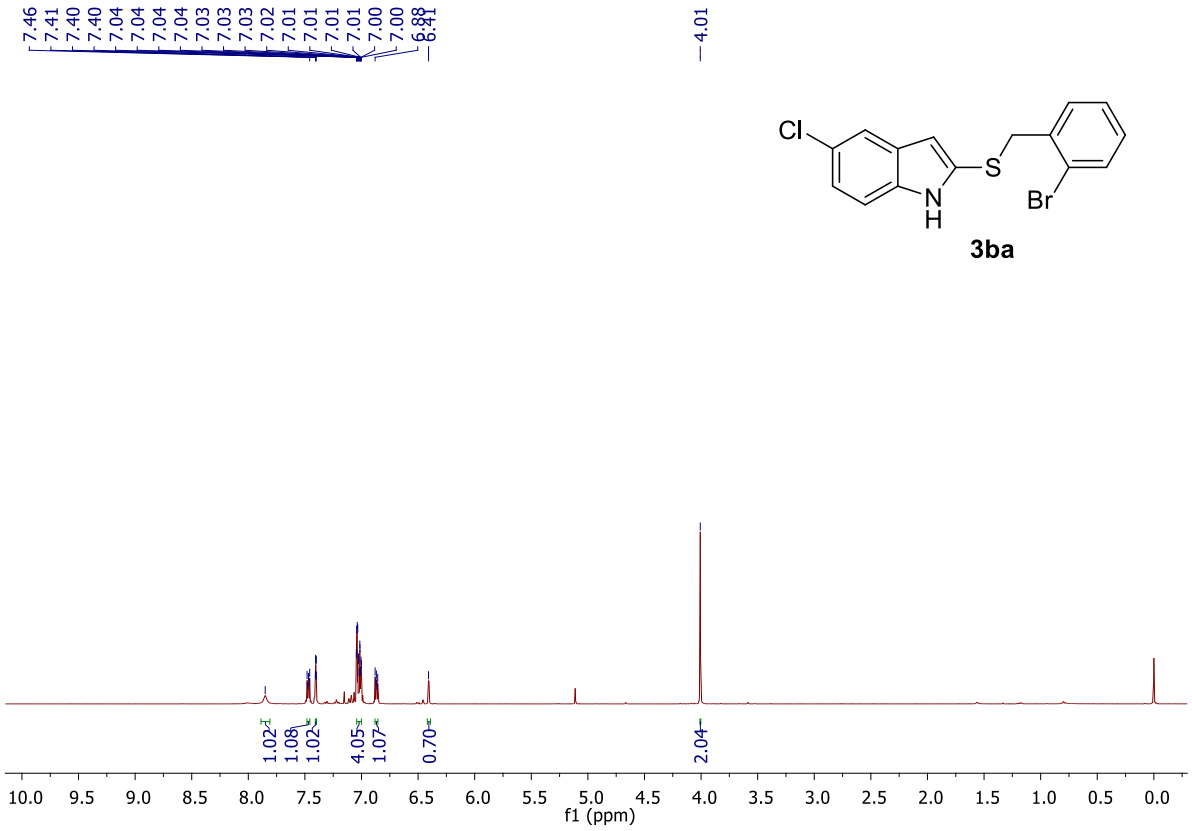
<sup>b</sup>Department of Biology and Chemistry, Nipissing University, North Bay, ON

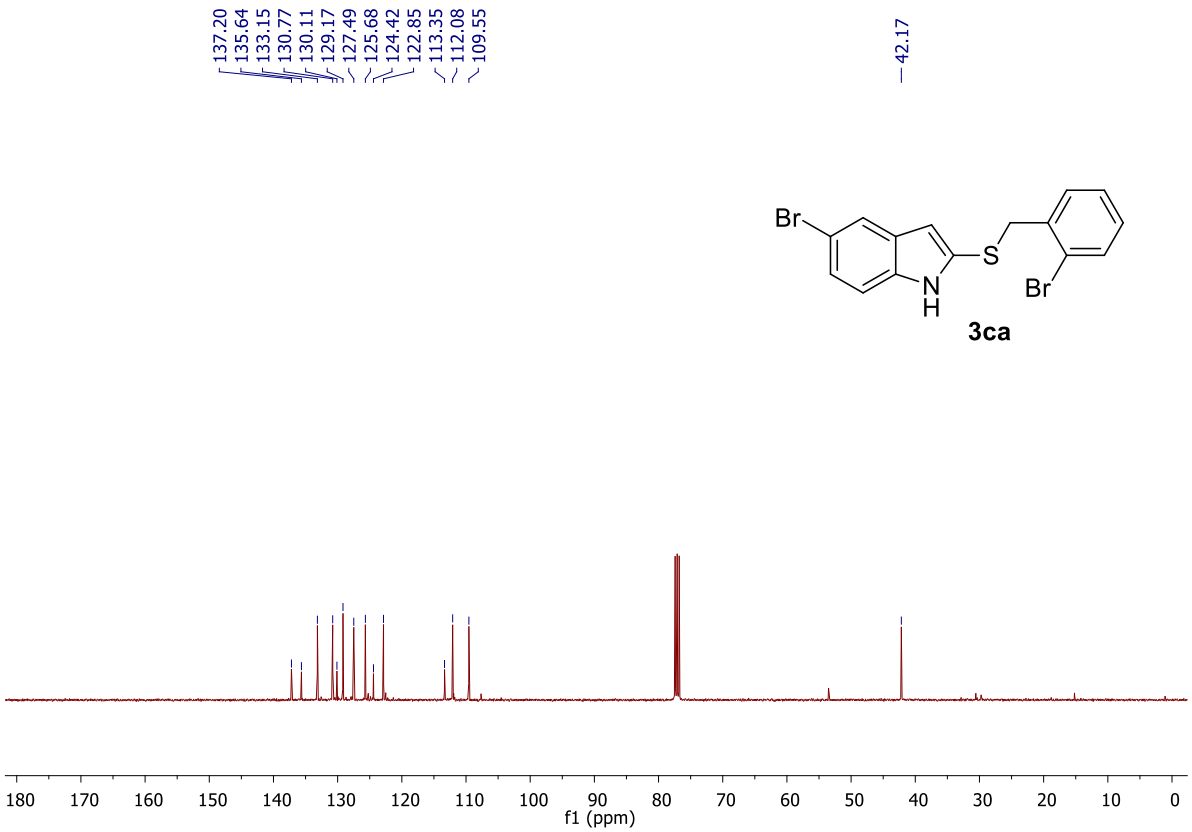
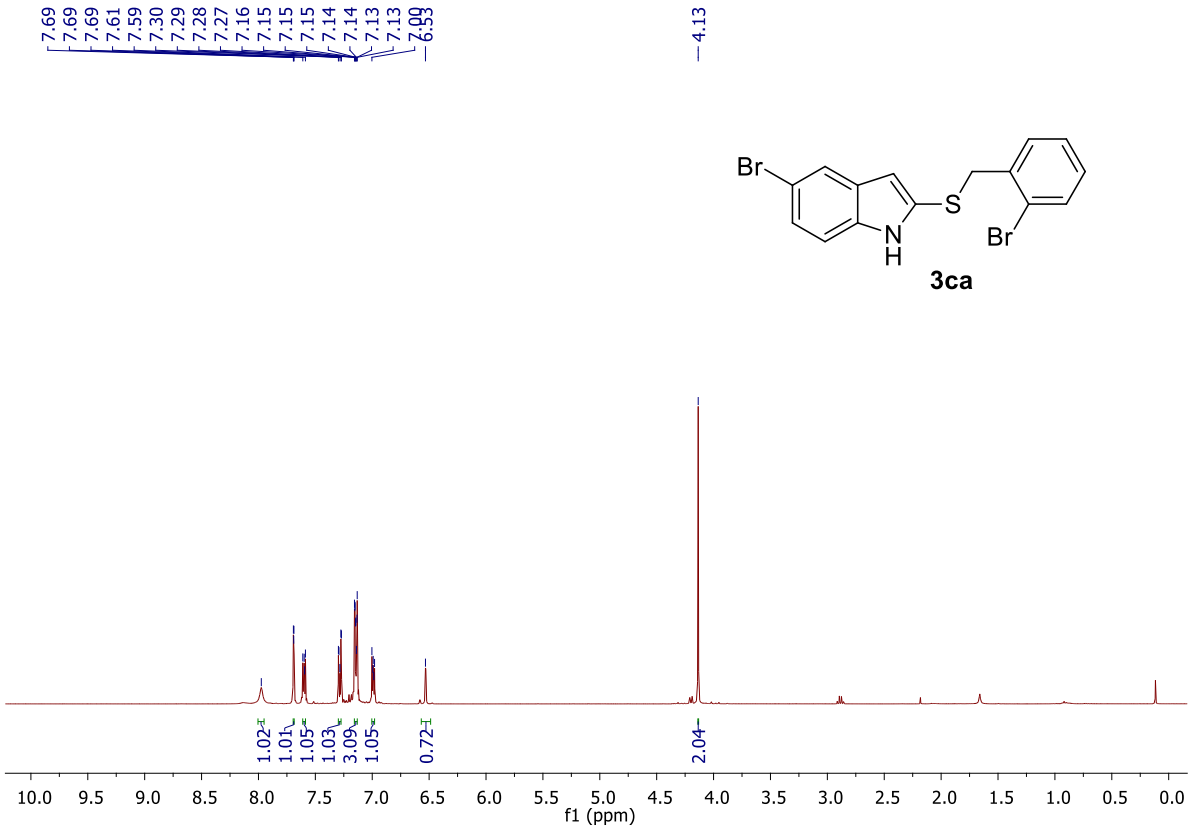
P1B 8L7, Canada

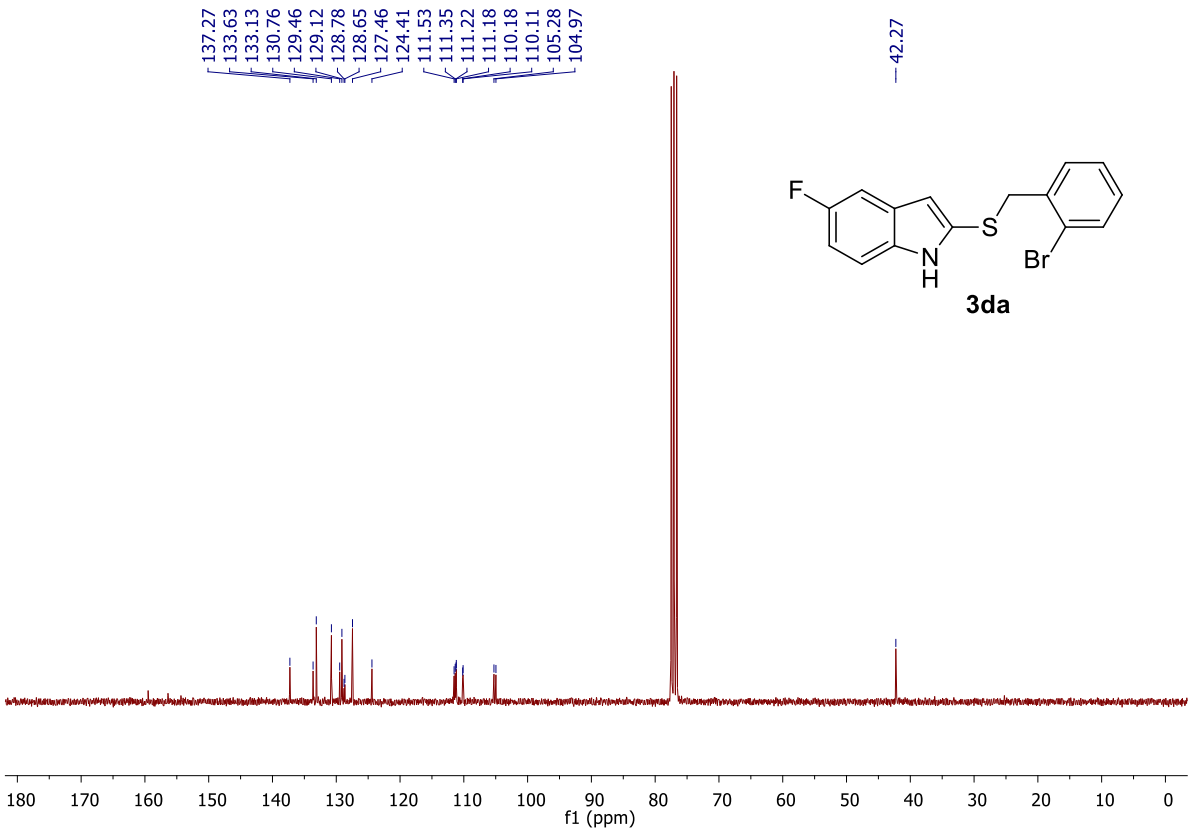
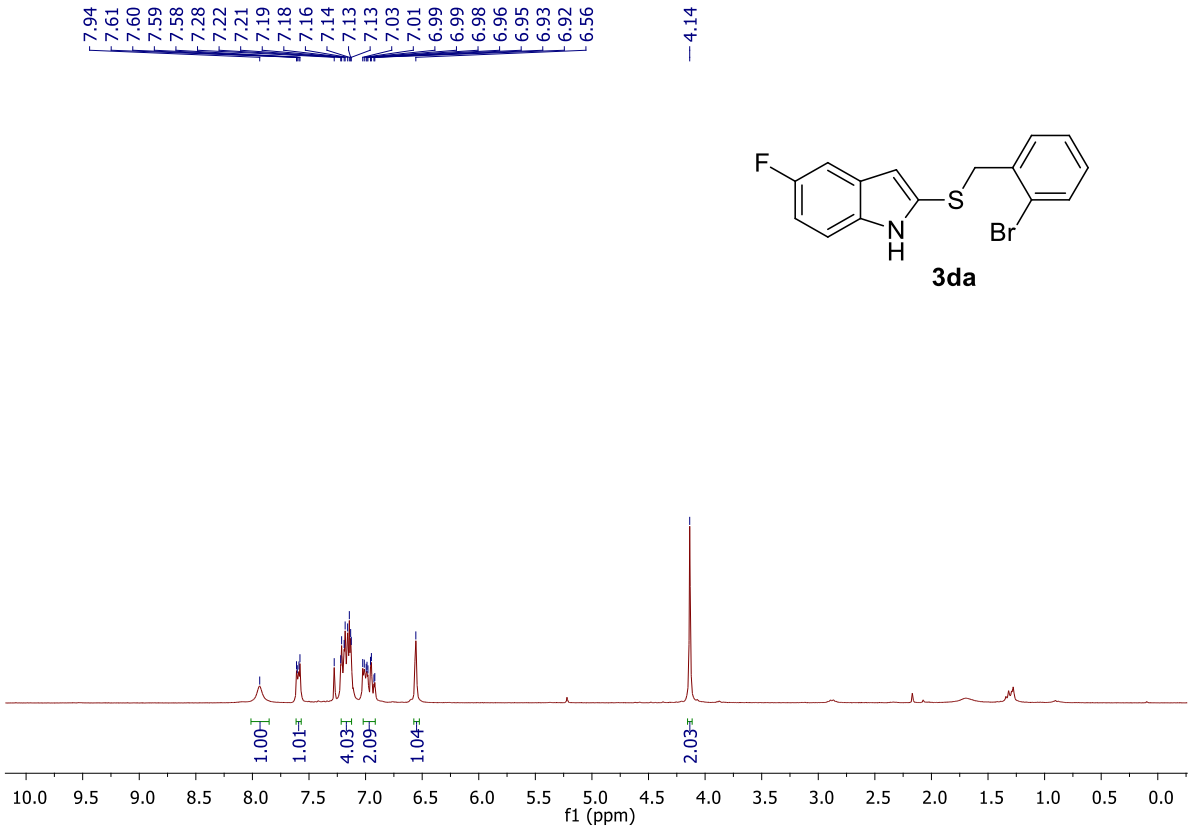
E-mail: anilkumar@pilani.bits-pilani.ac.in; mukundj@nipissingu.ca

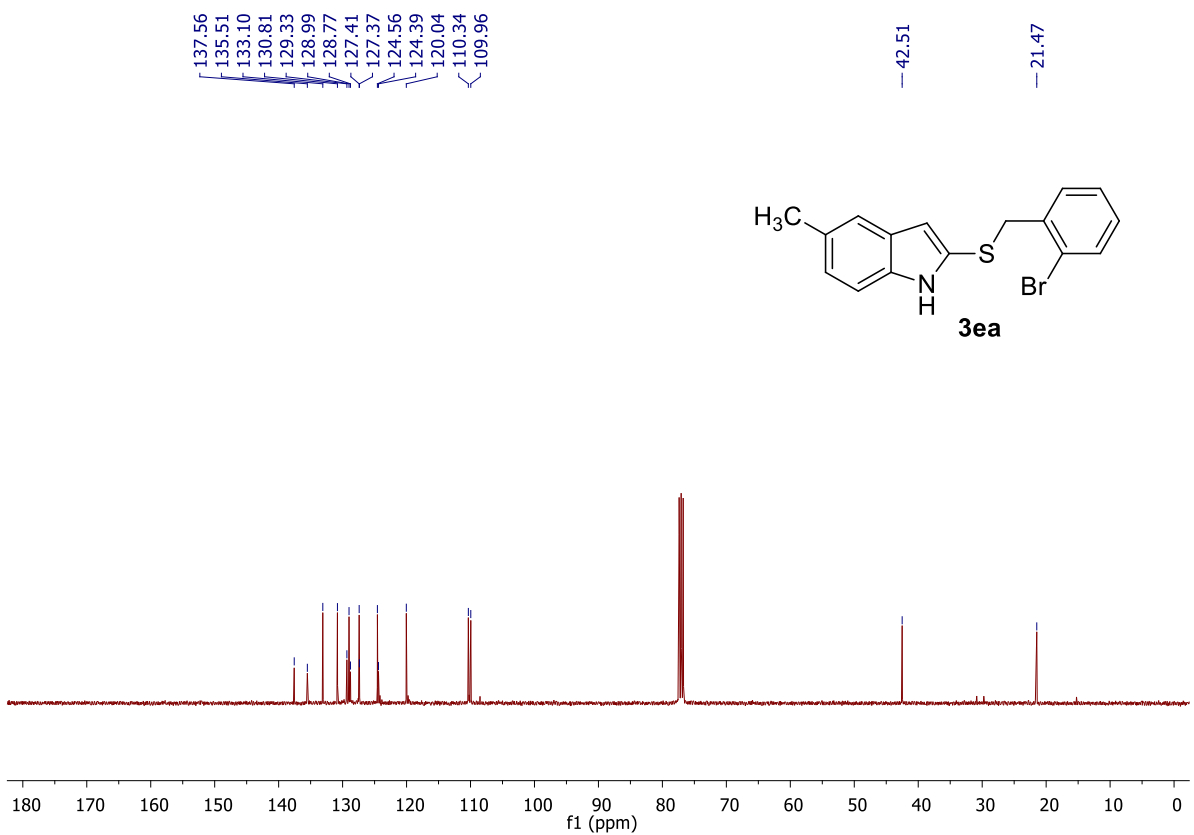
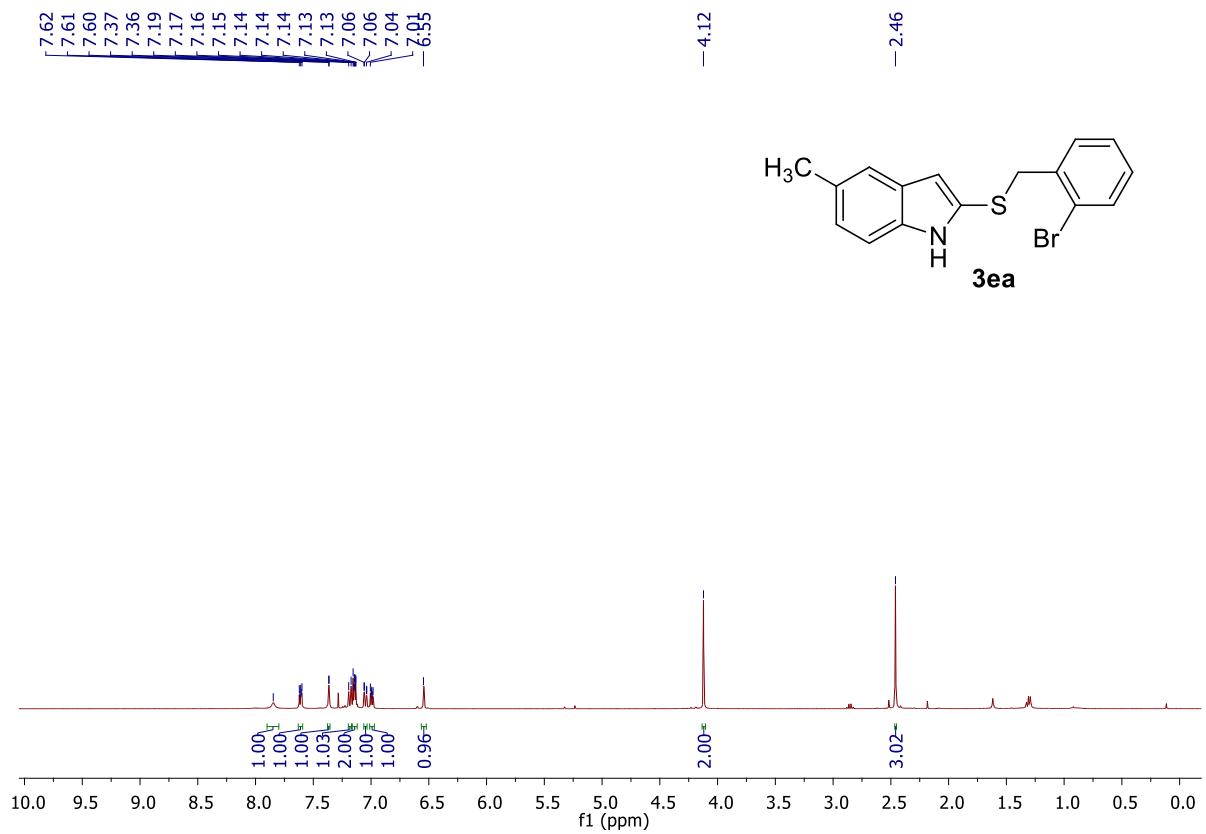
Copies of  $^1\text{H}$  and  $^{13}\text{C}$  NMR for compound **3**, **4** and **5**

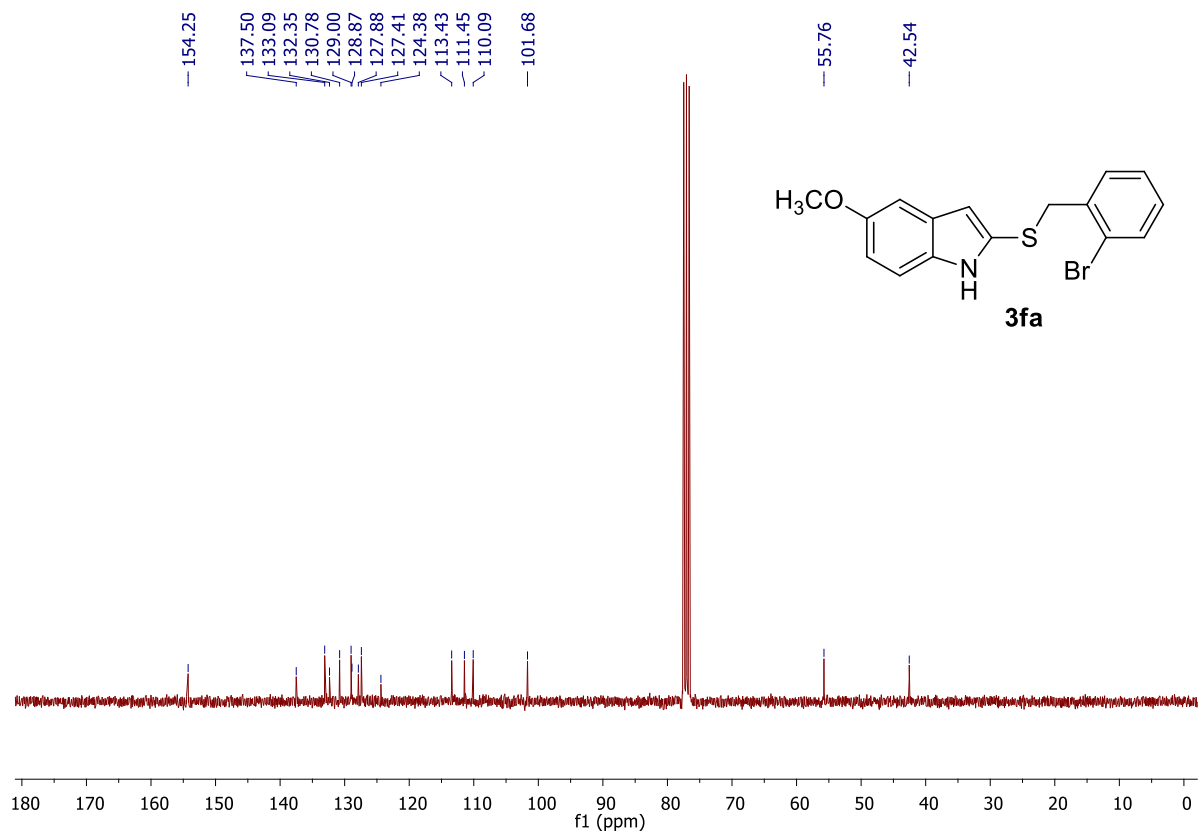
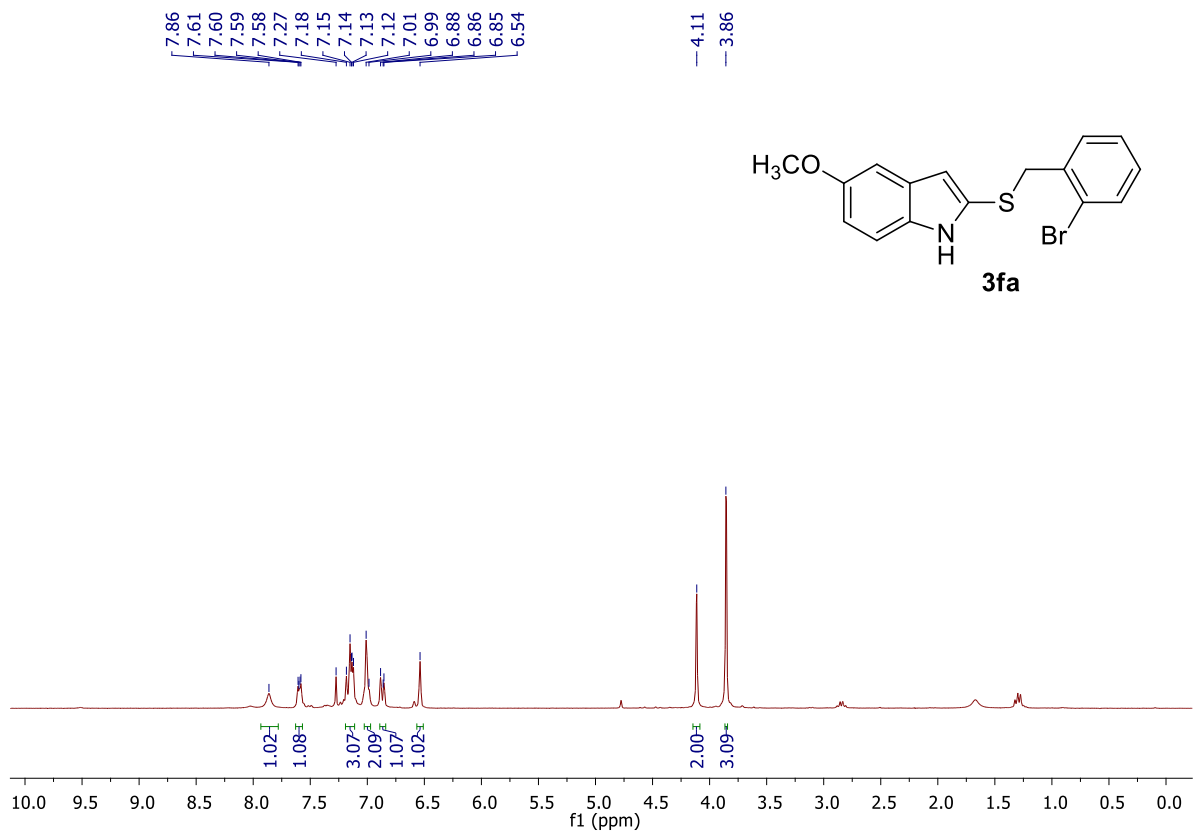


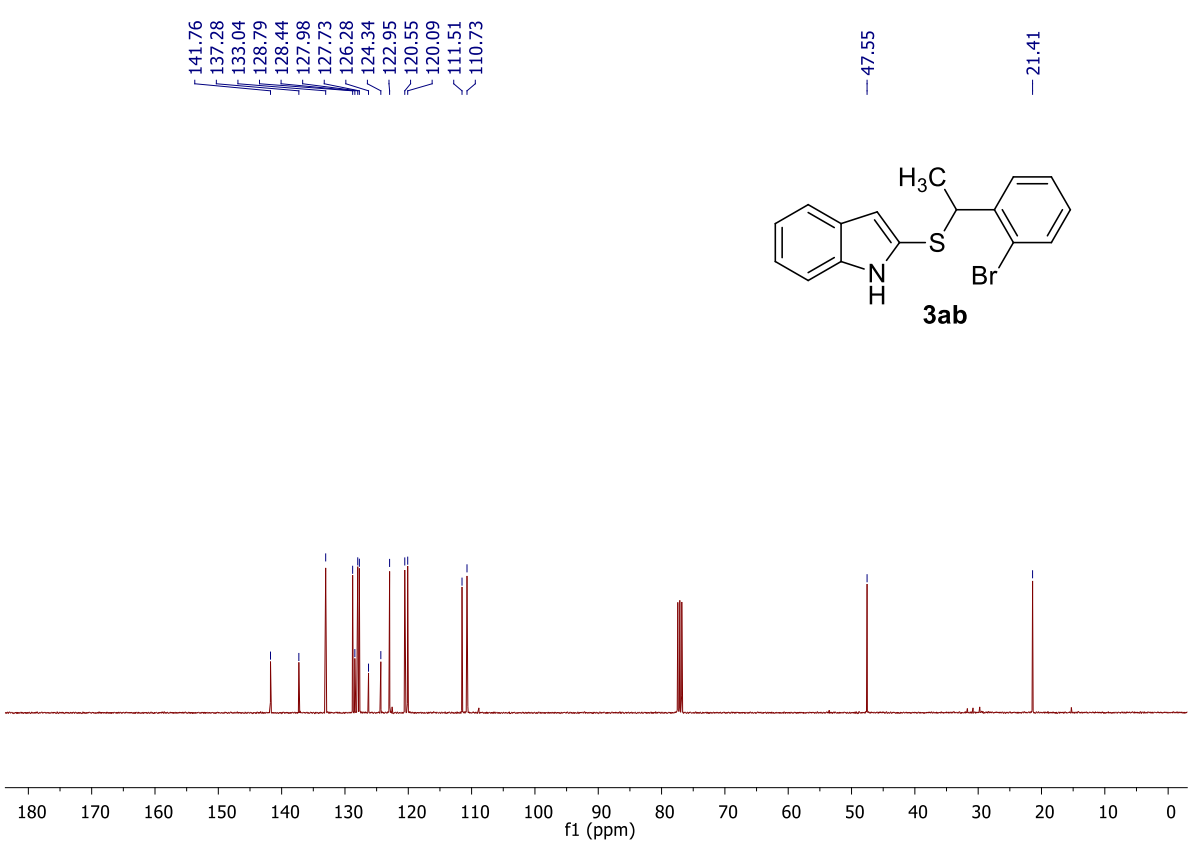
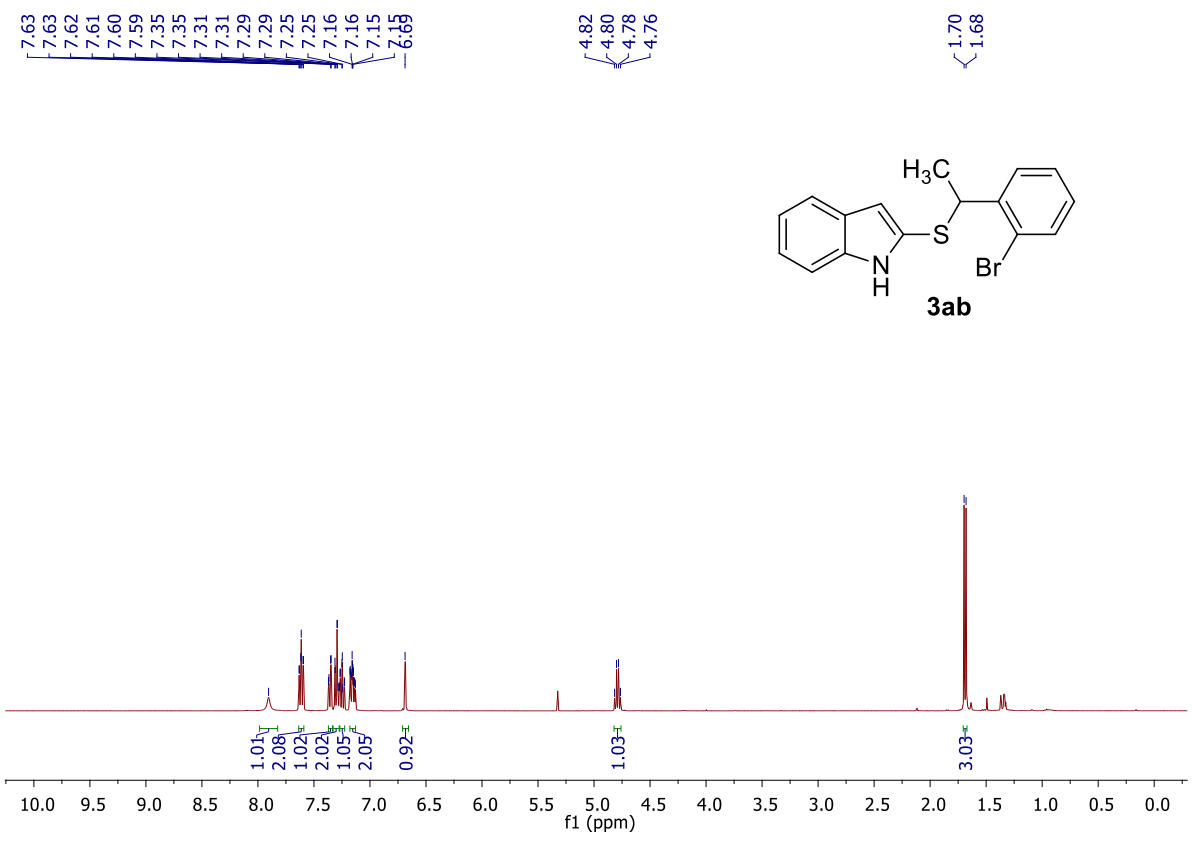




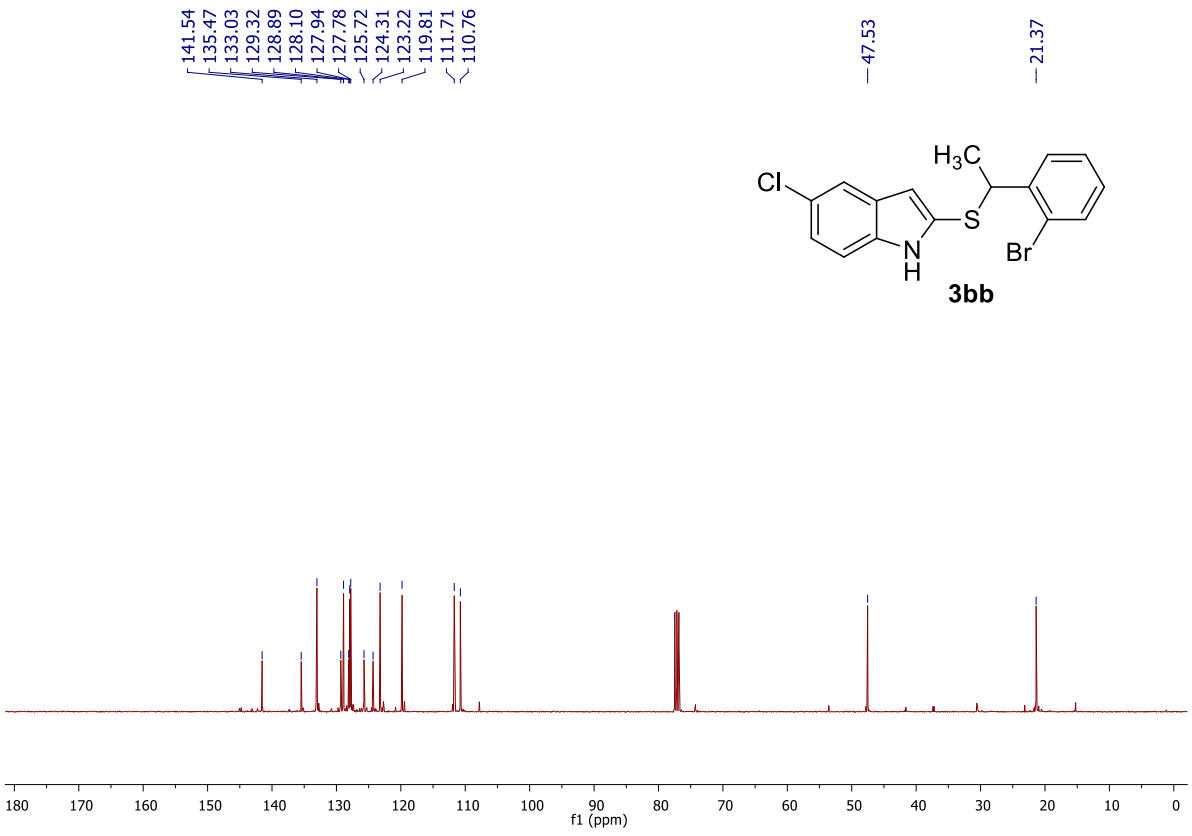
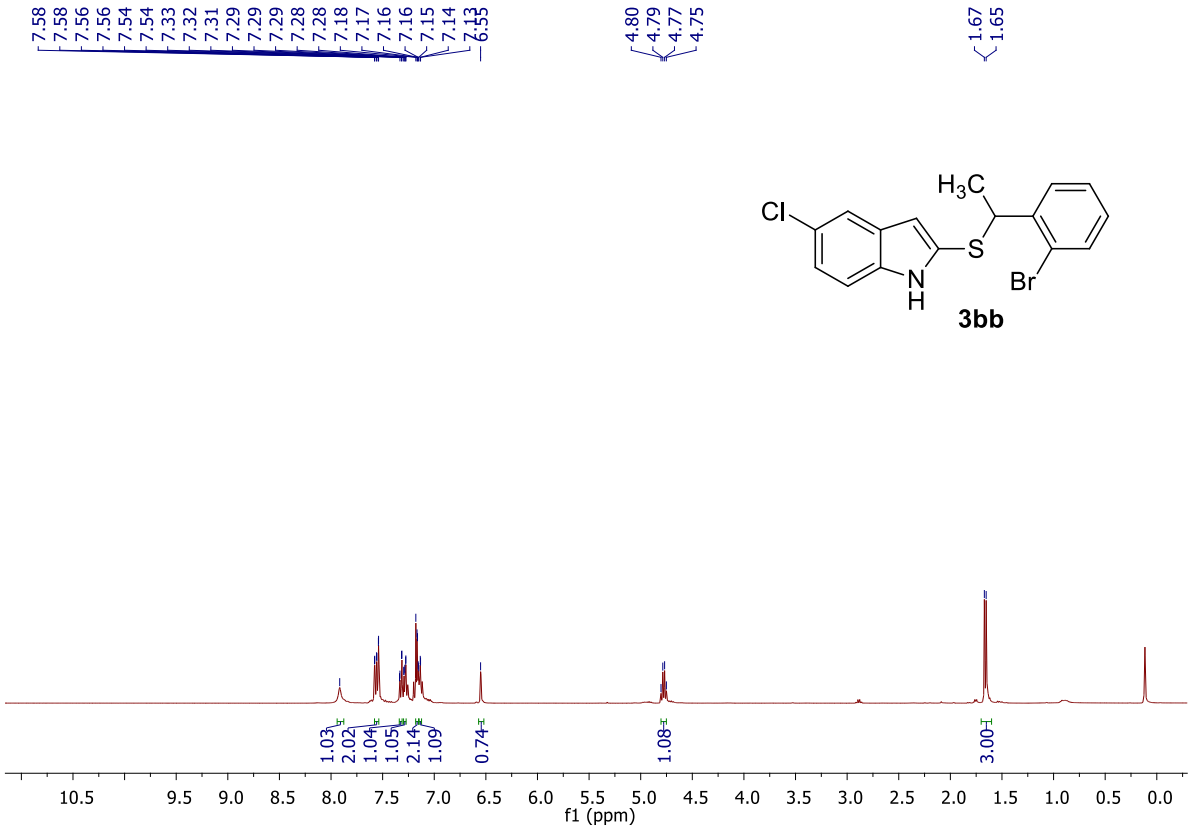


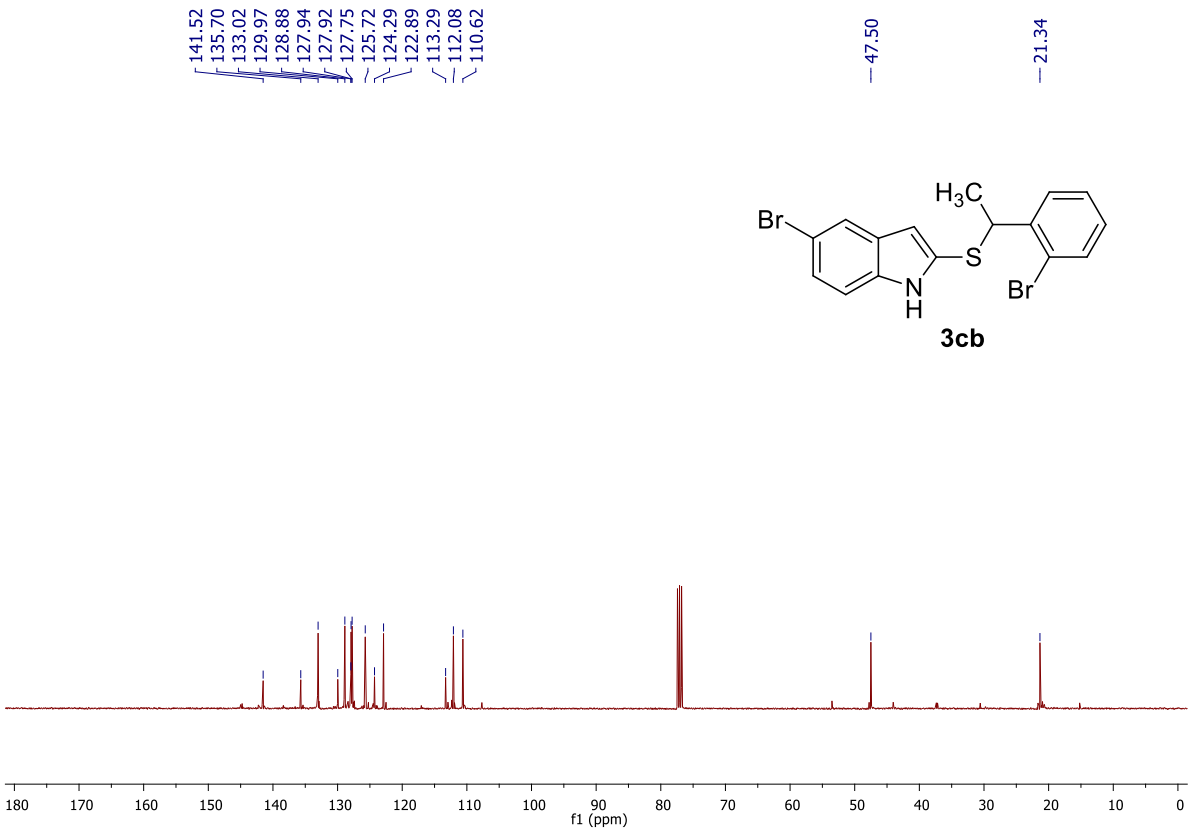
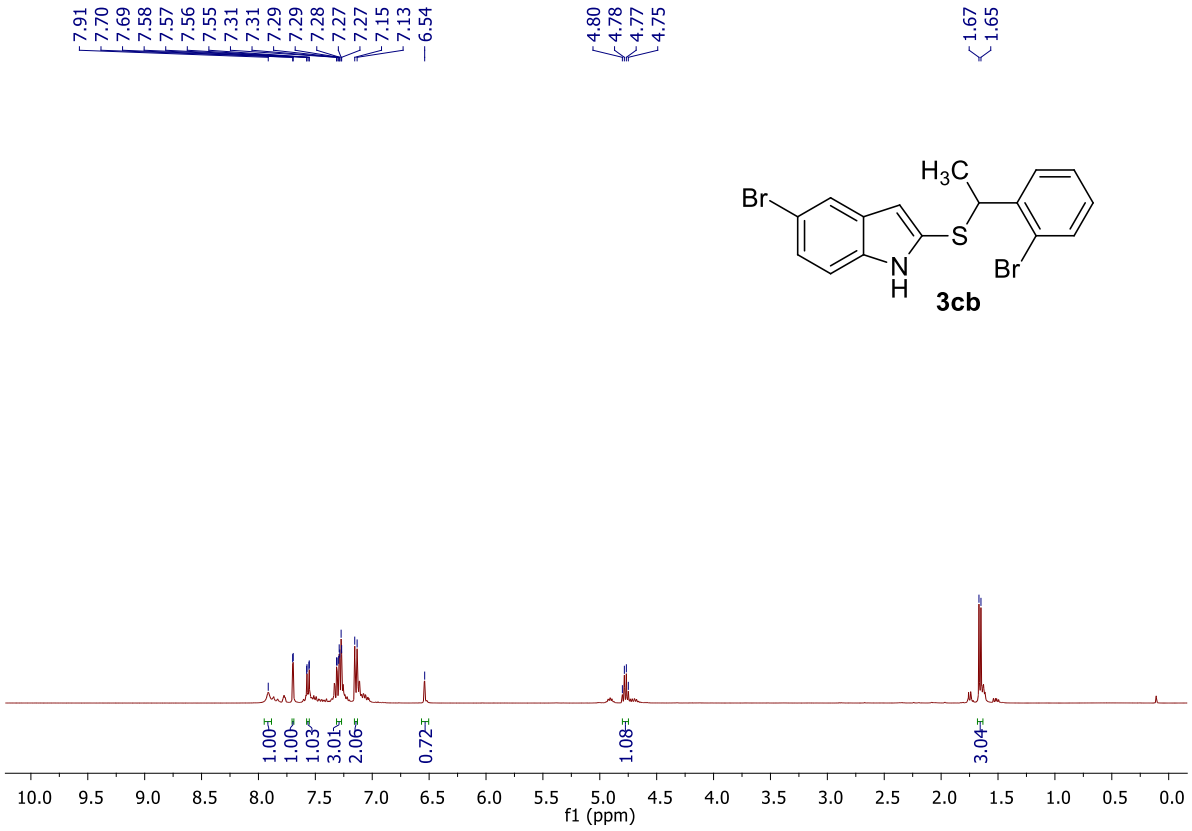


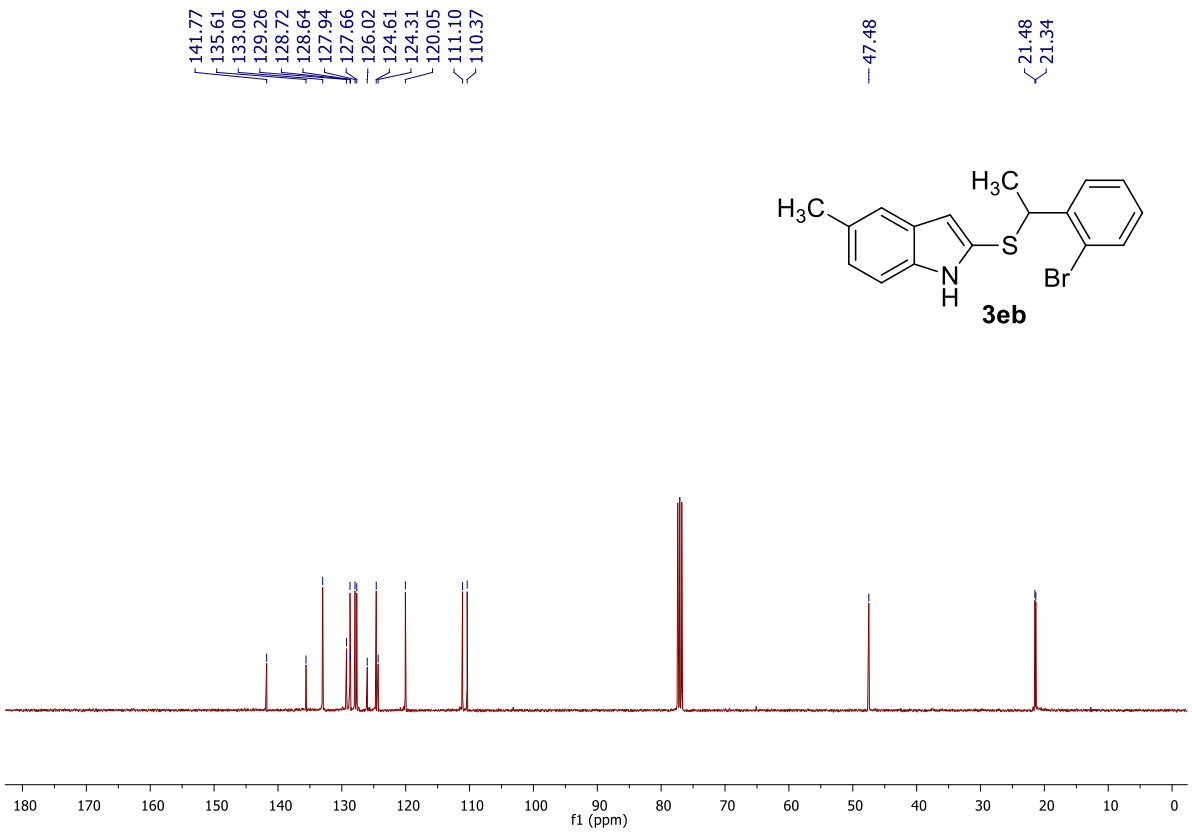
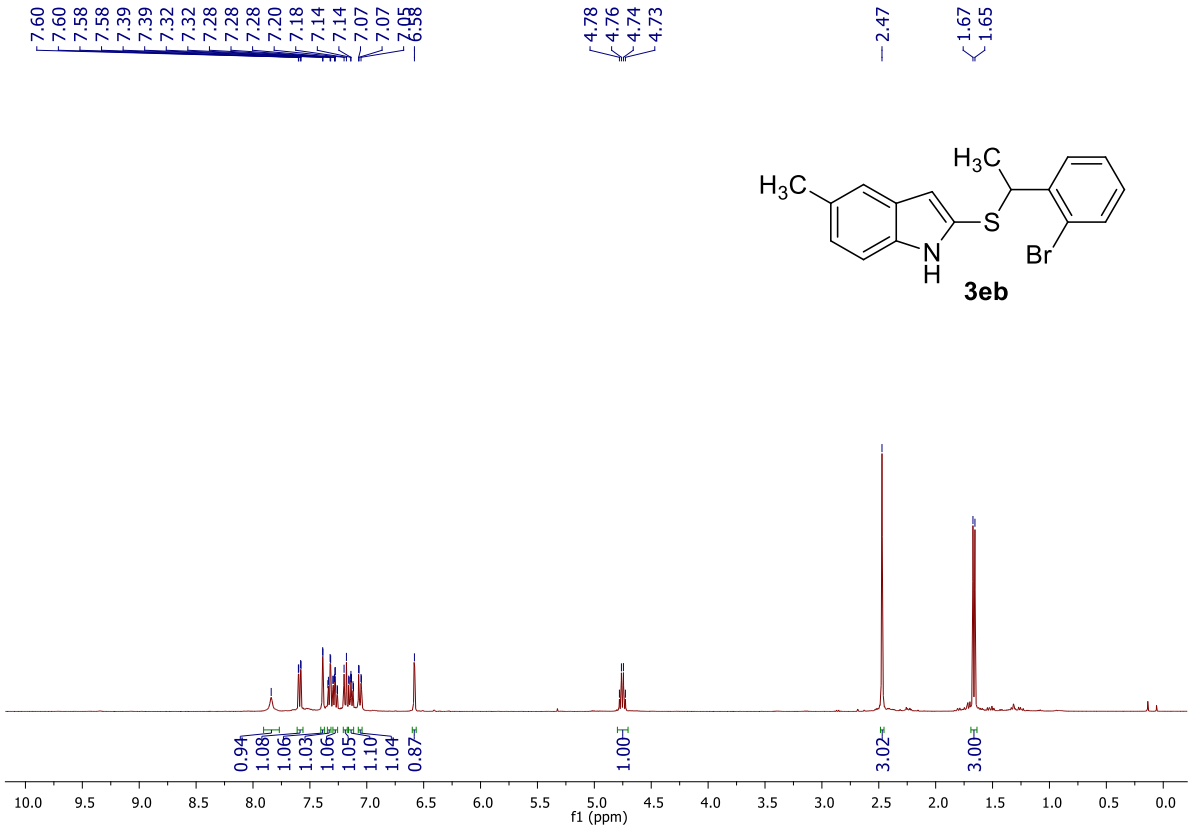


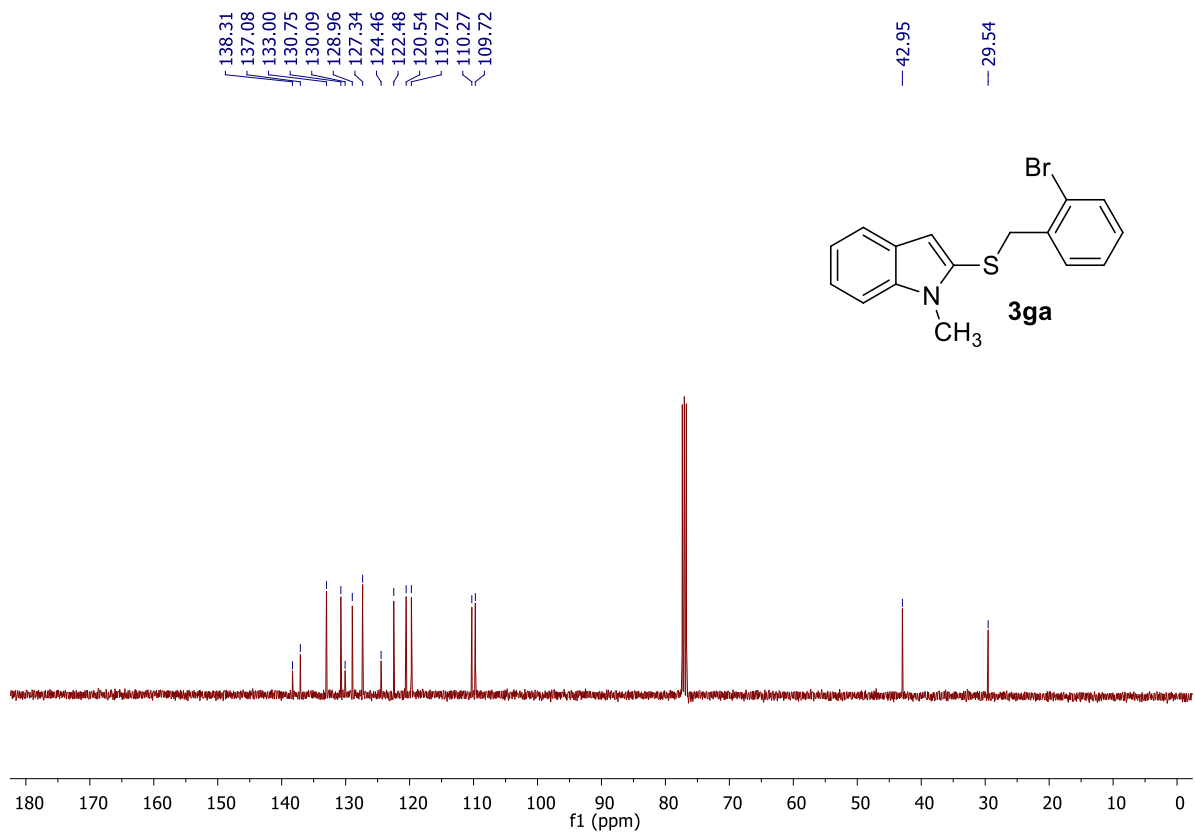
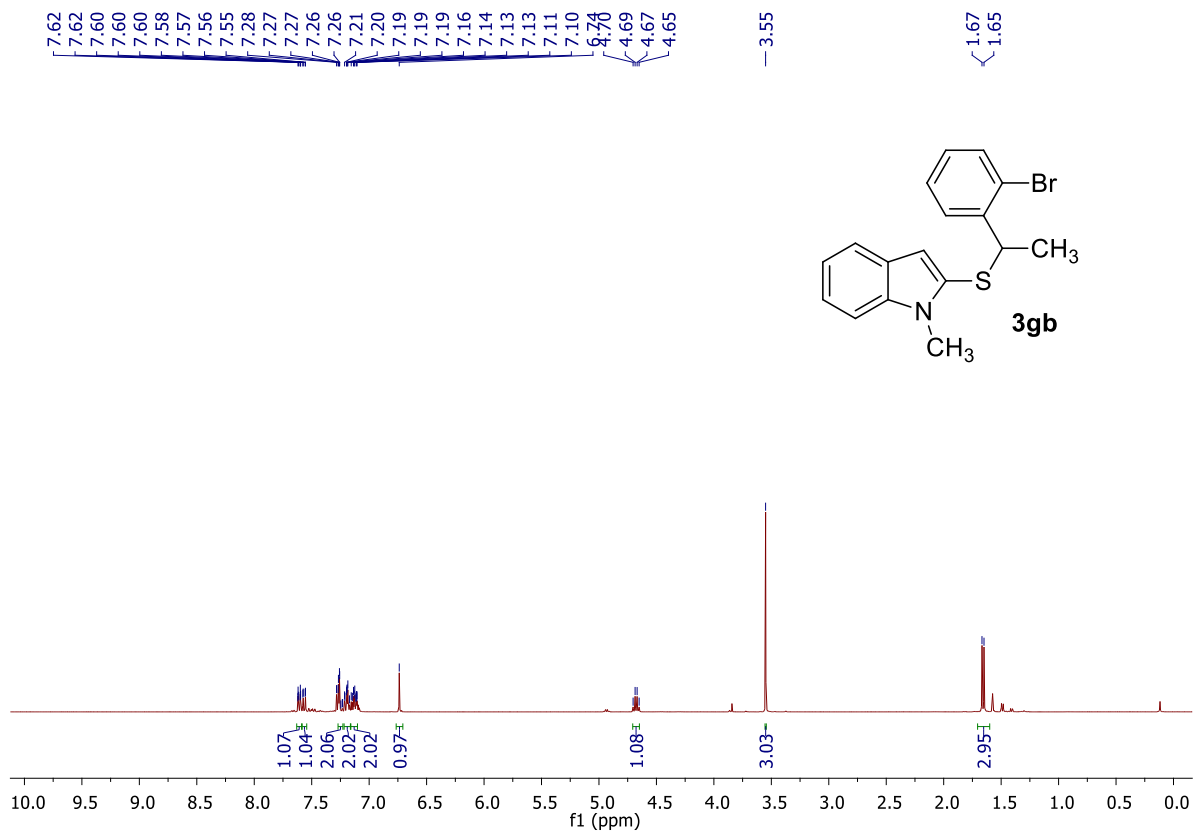


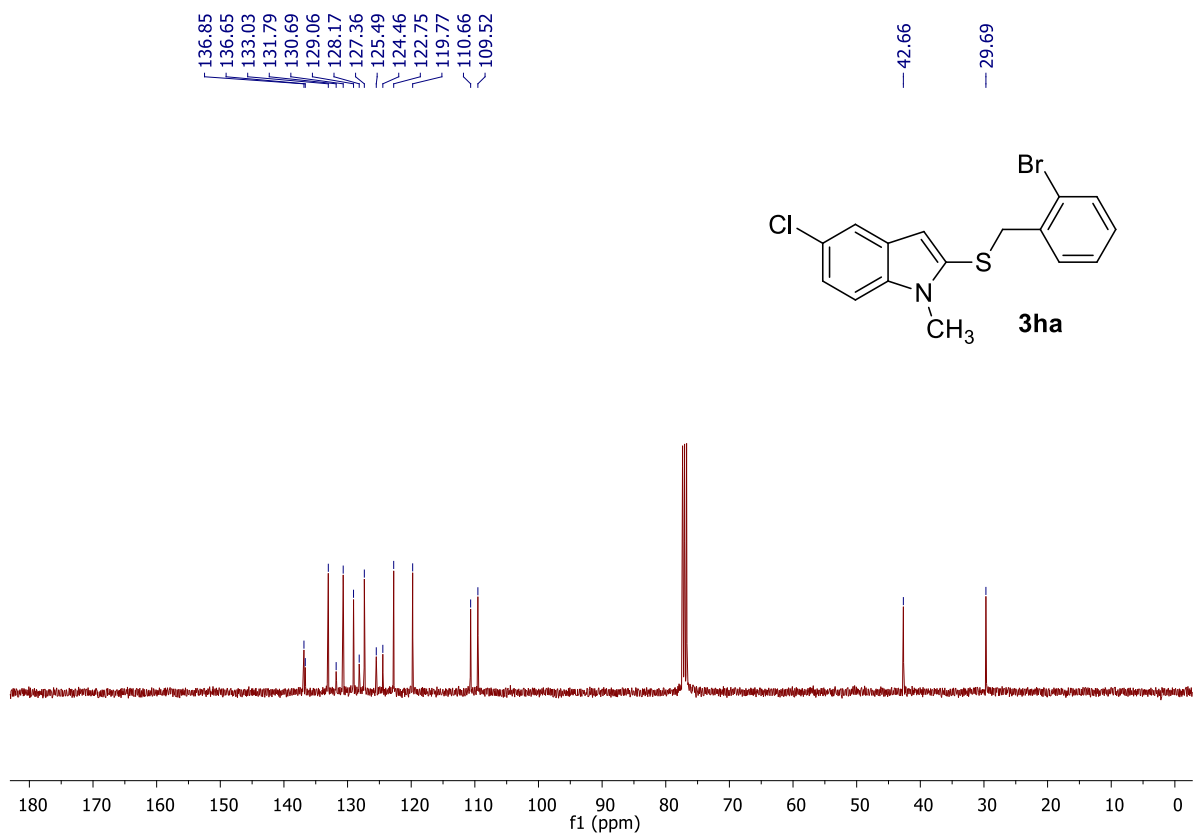
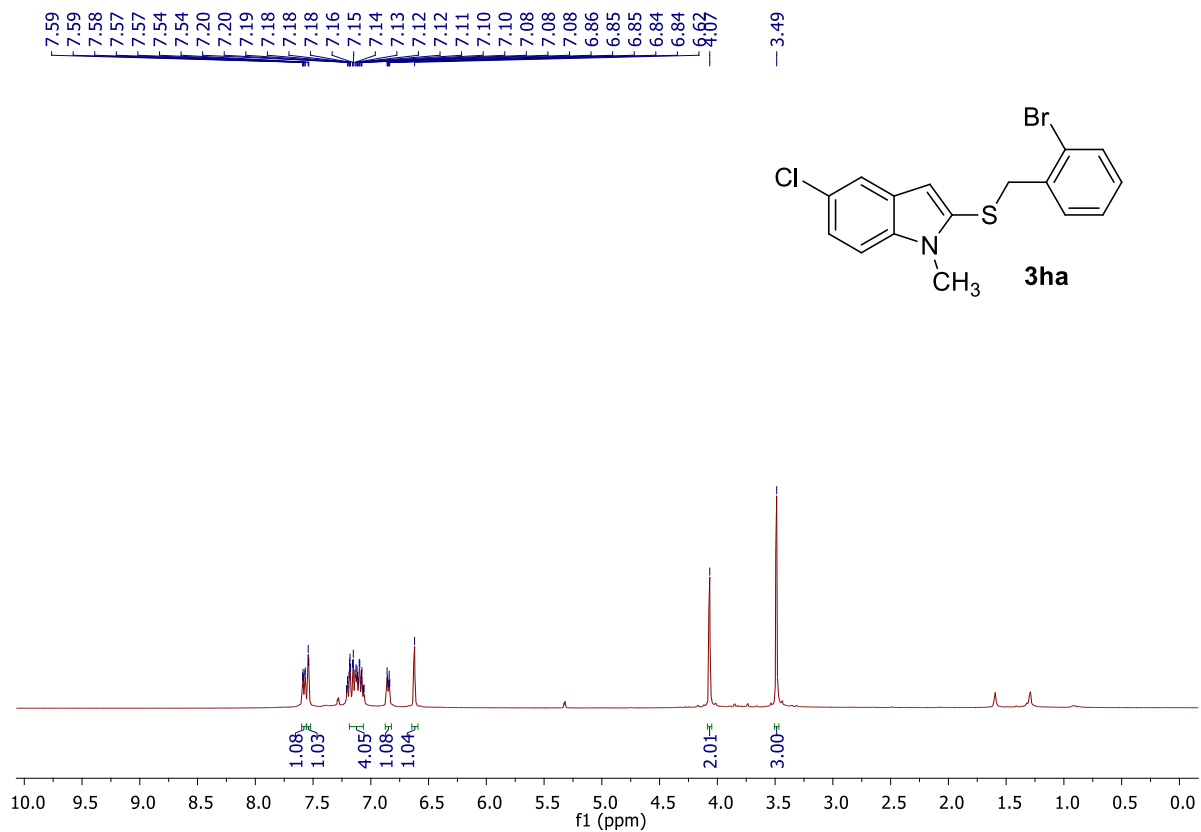


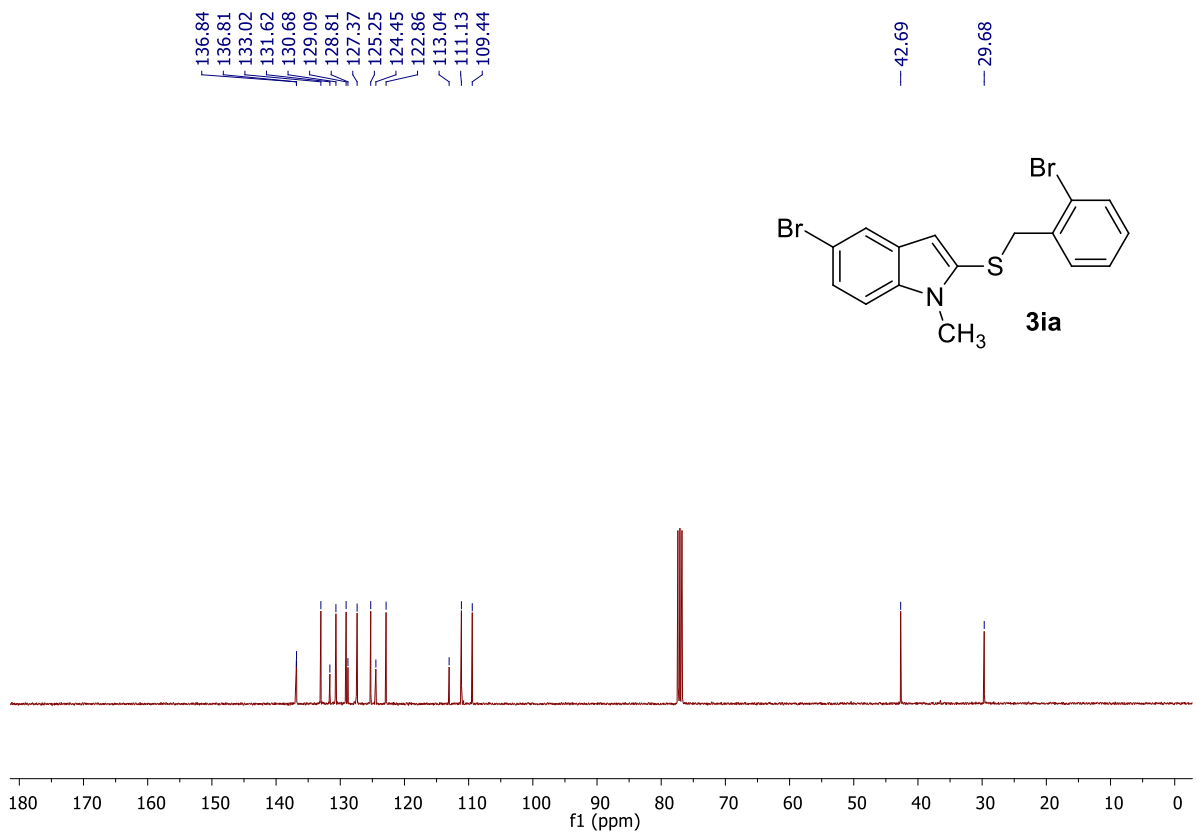
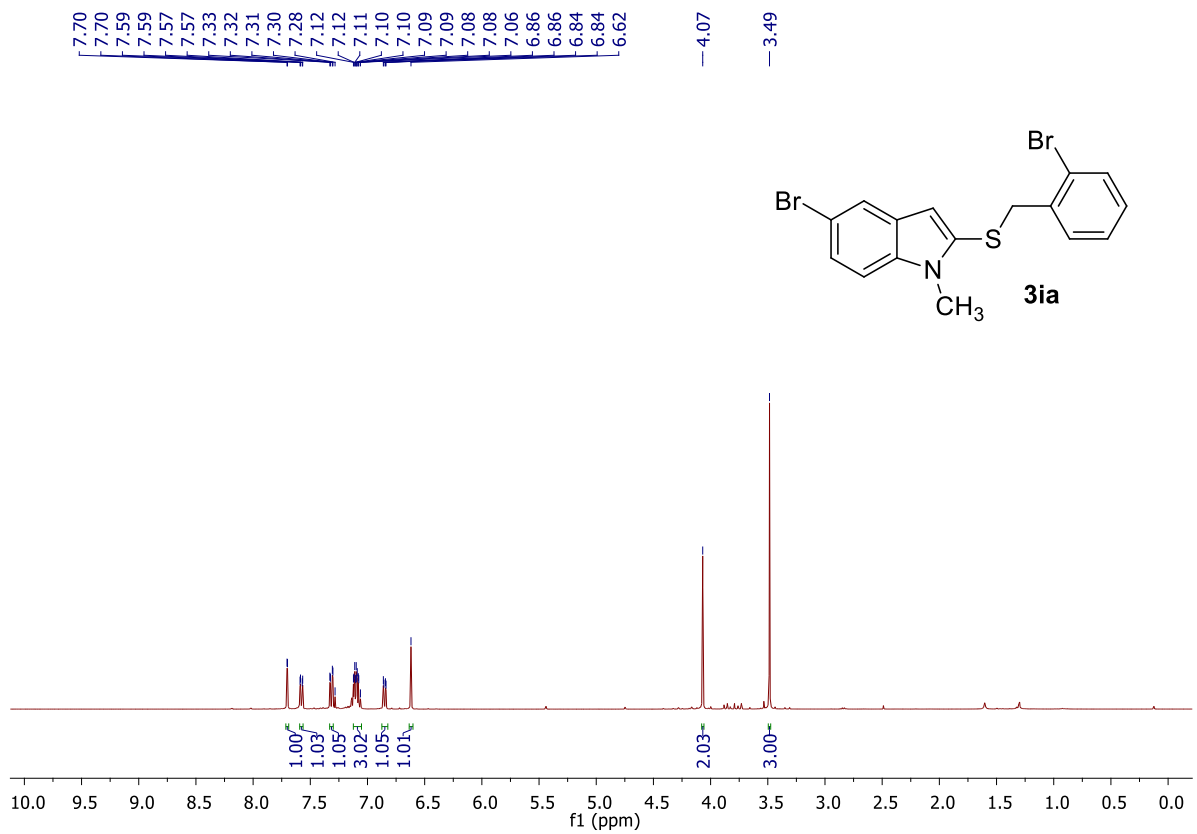


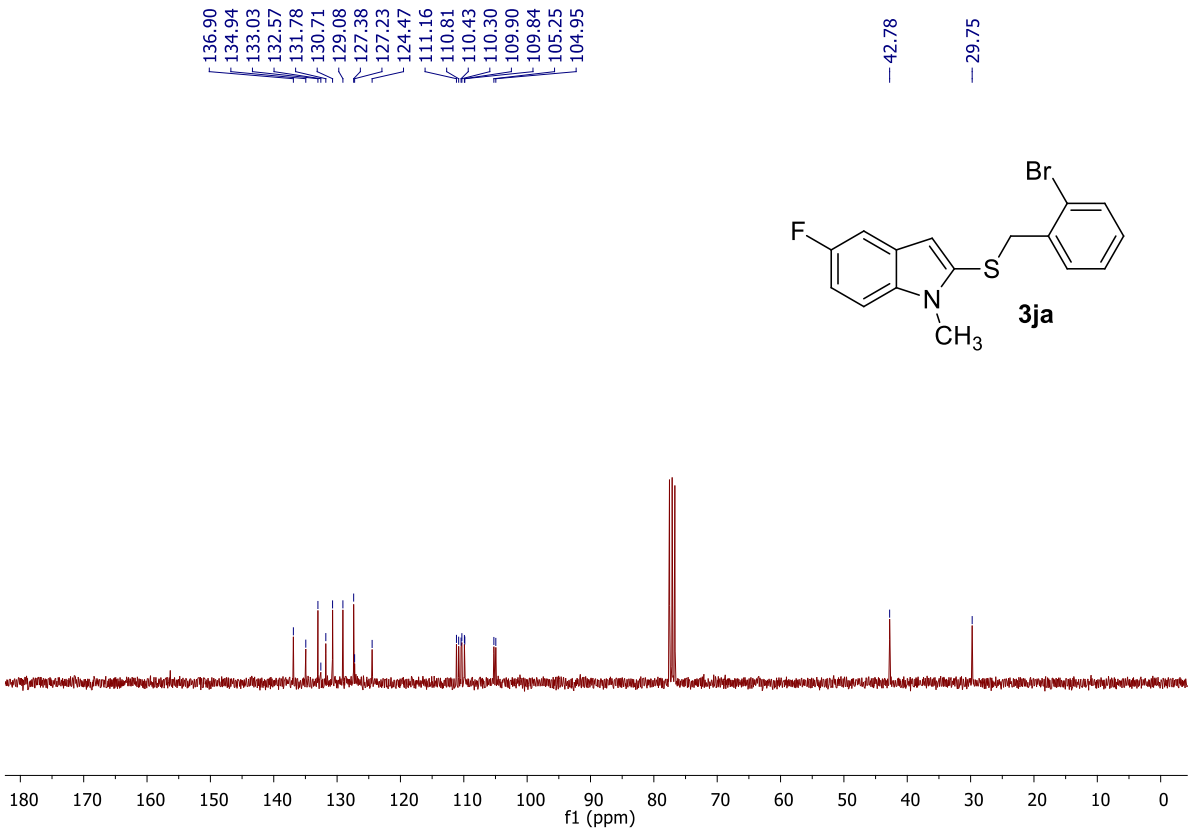
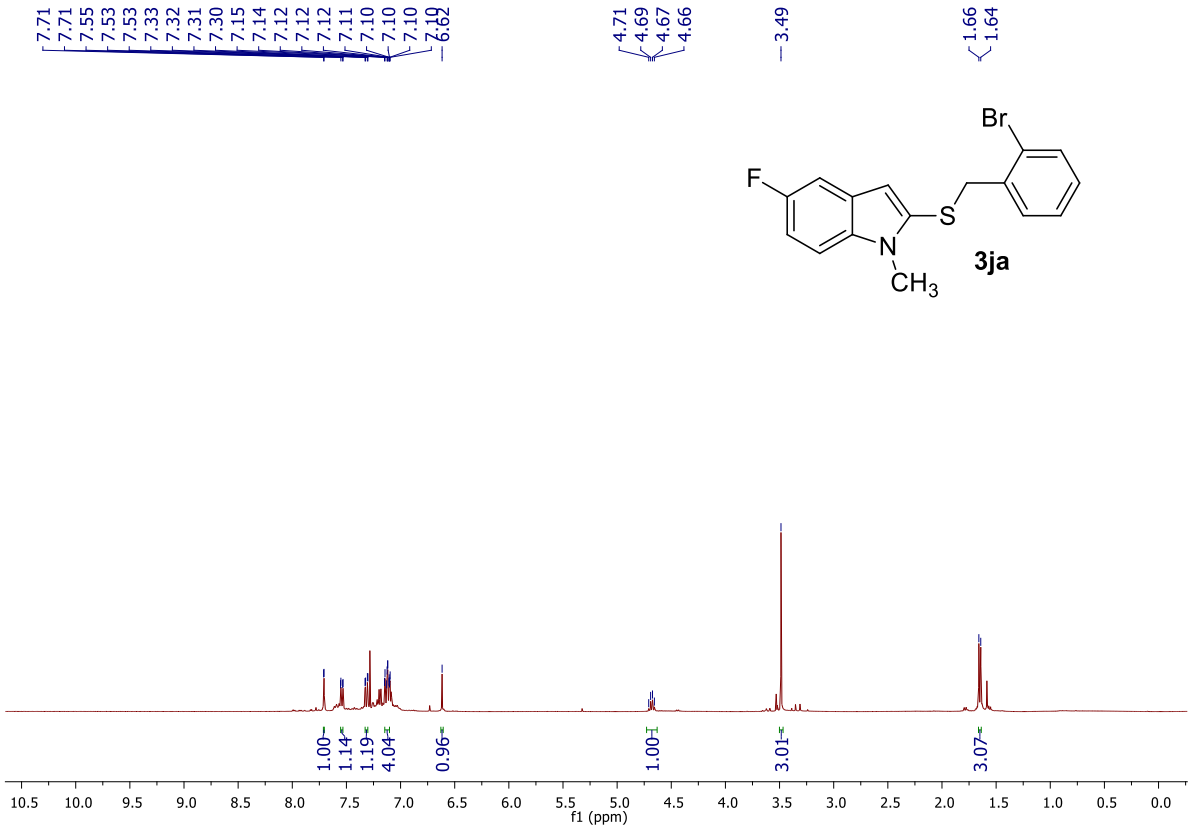


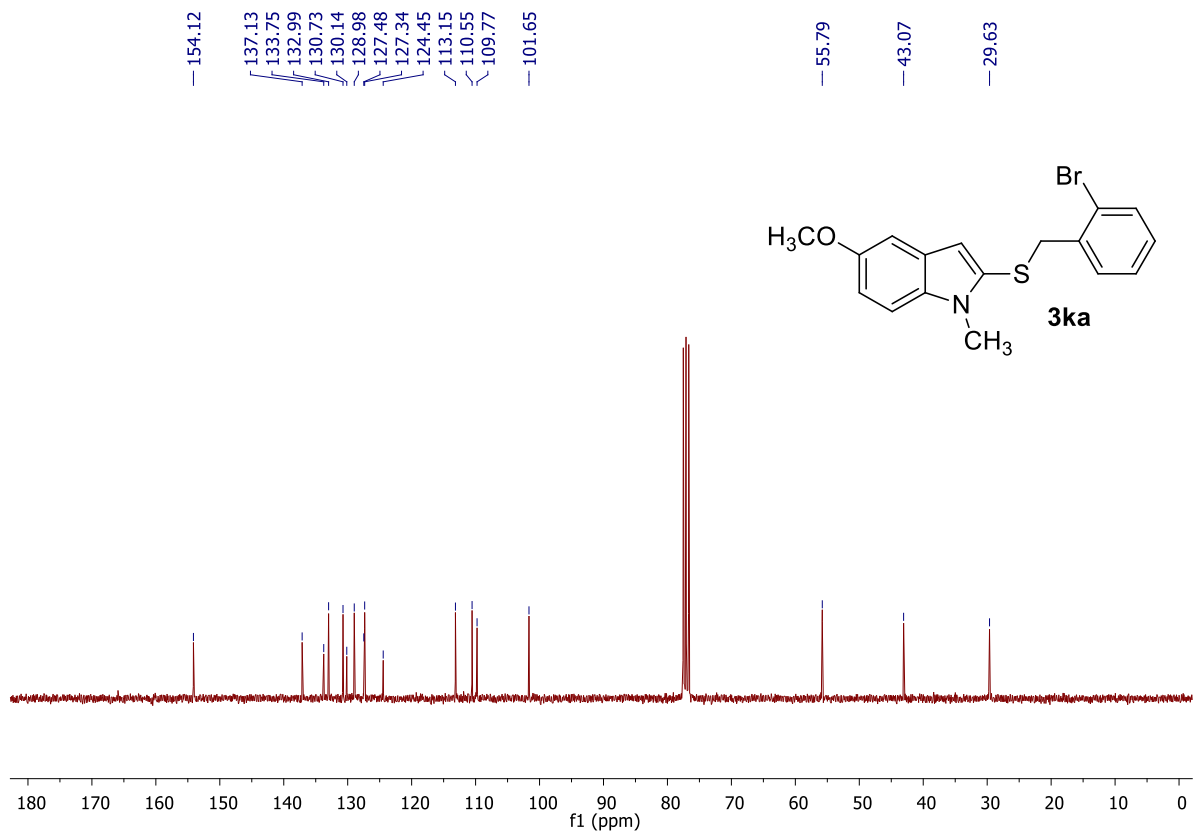
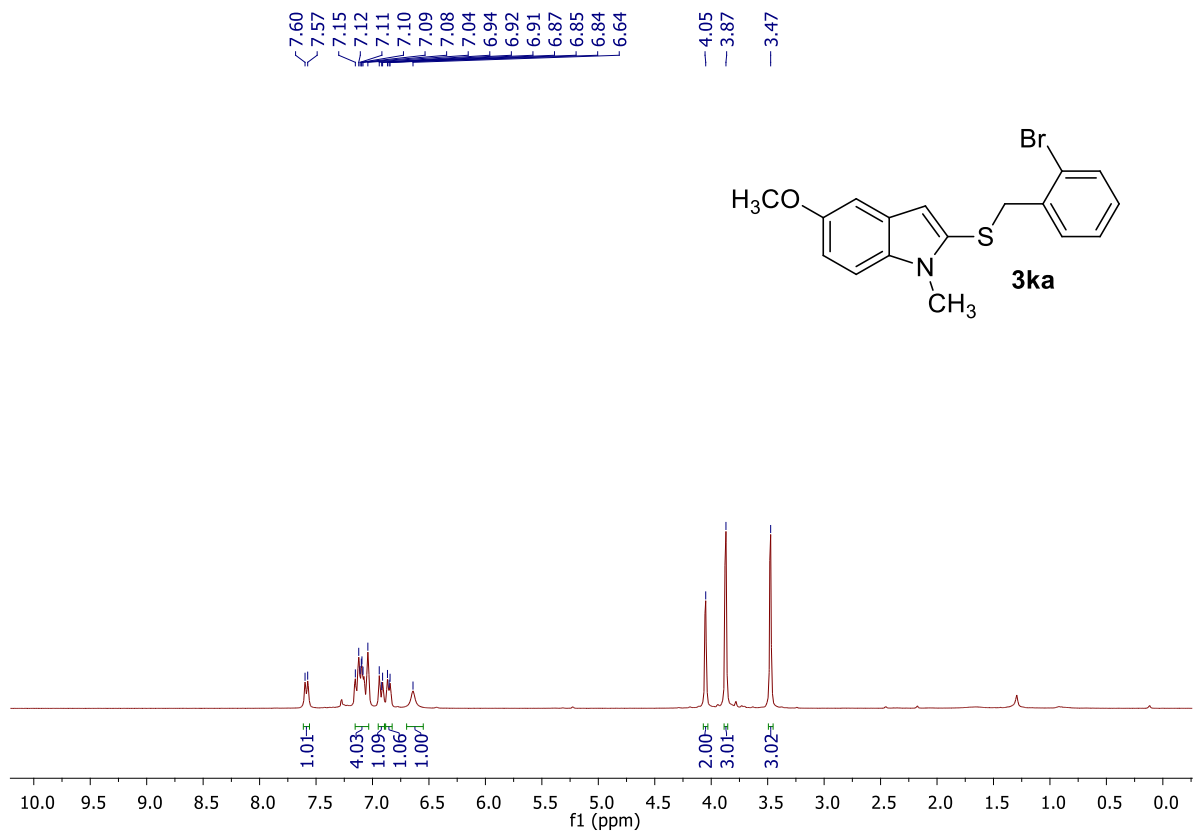




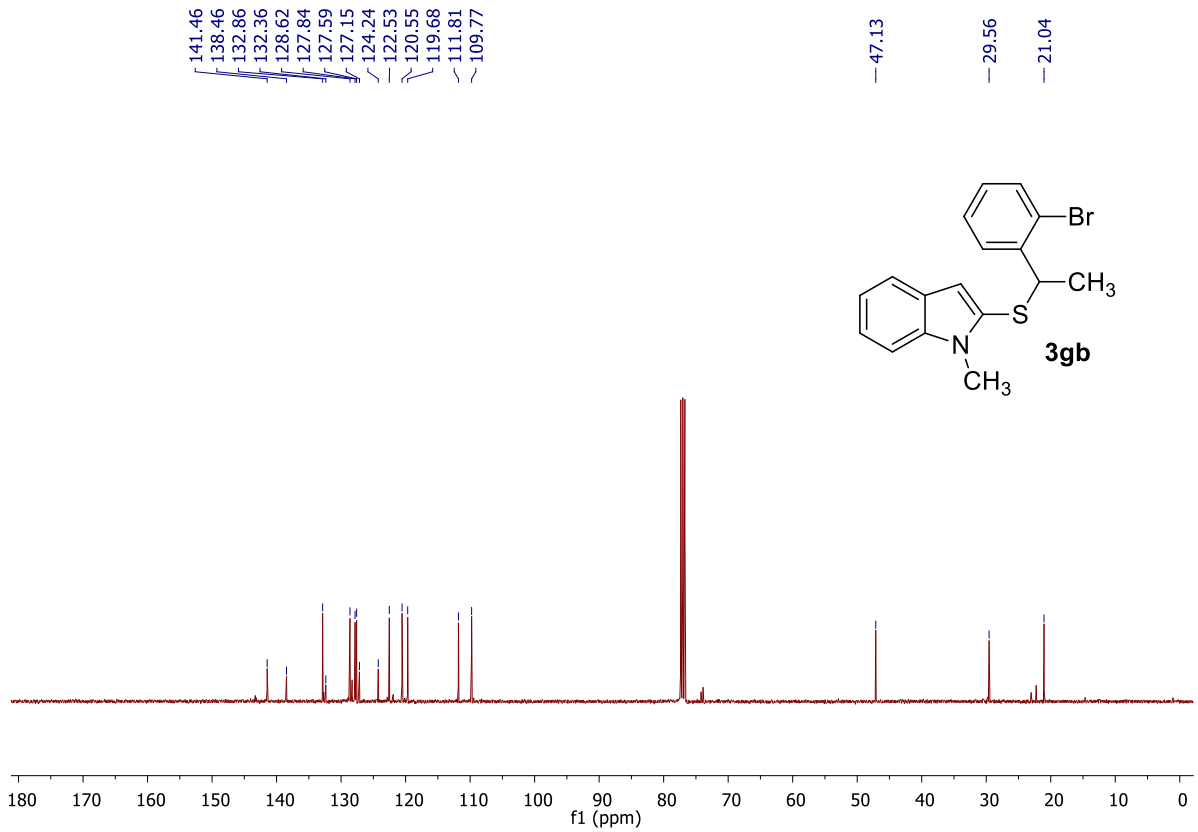
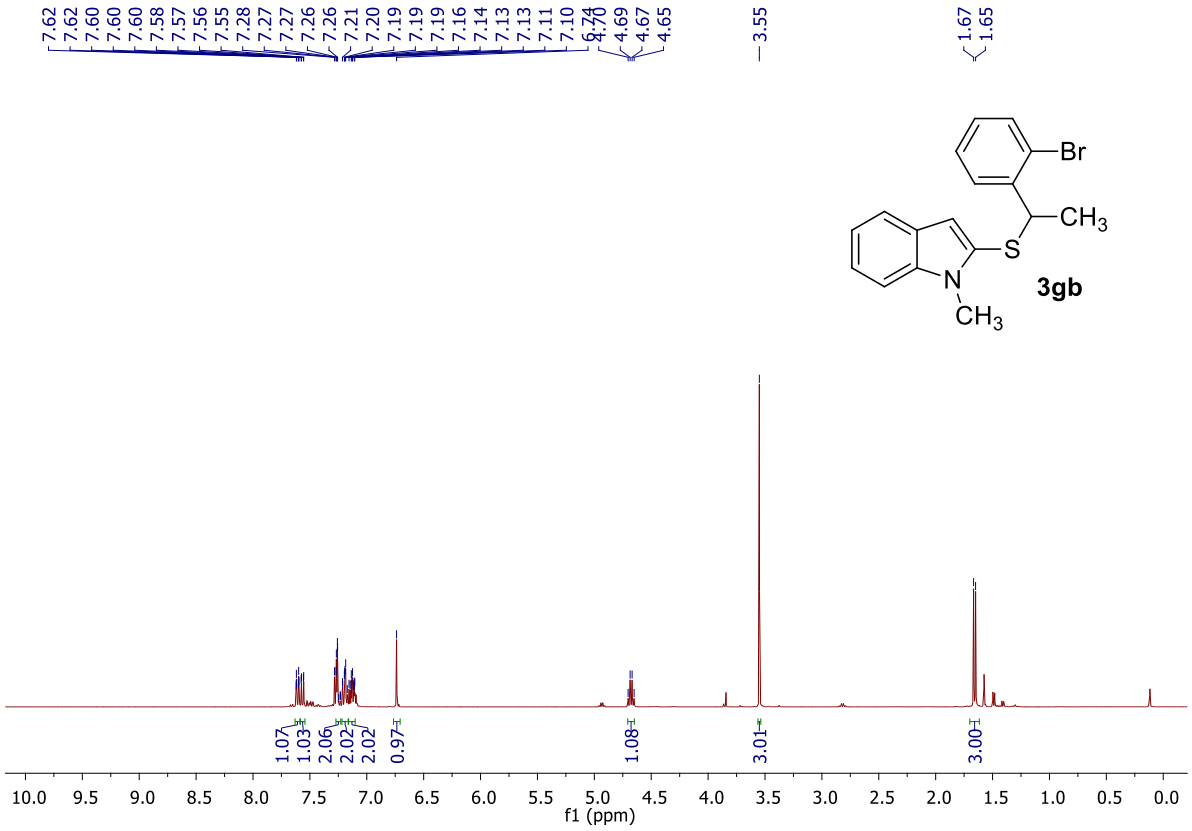


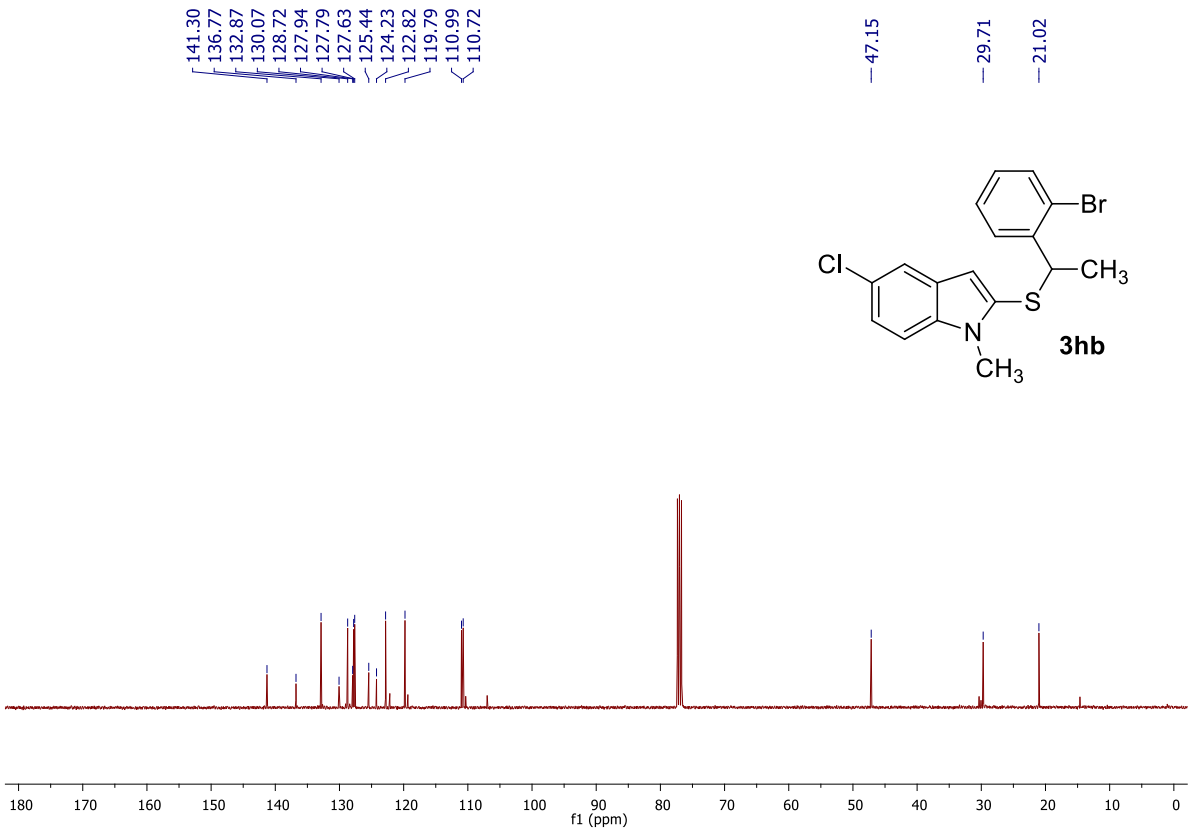
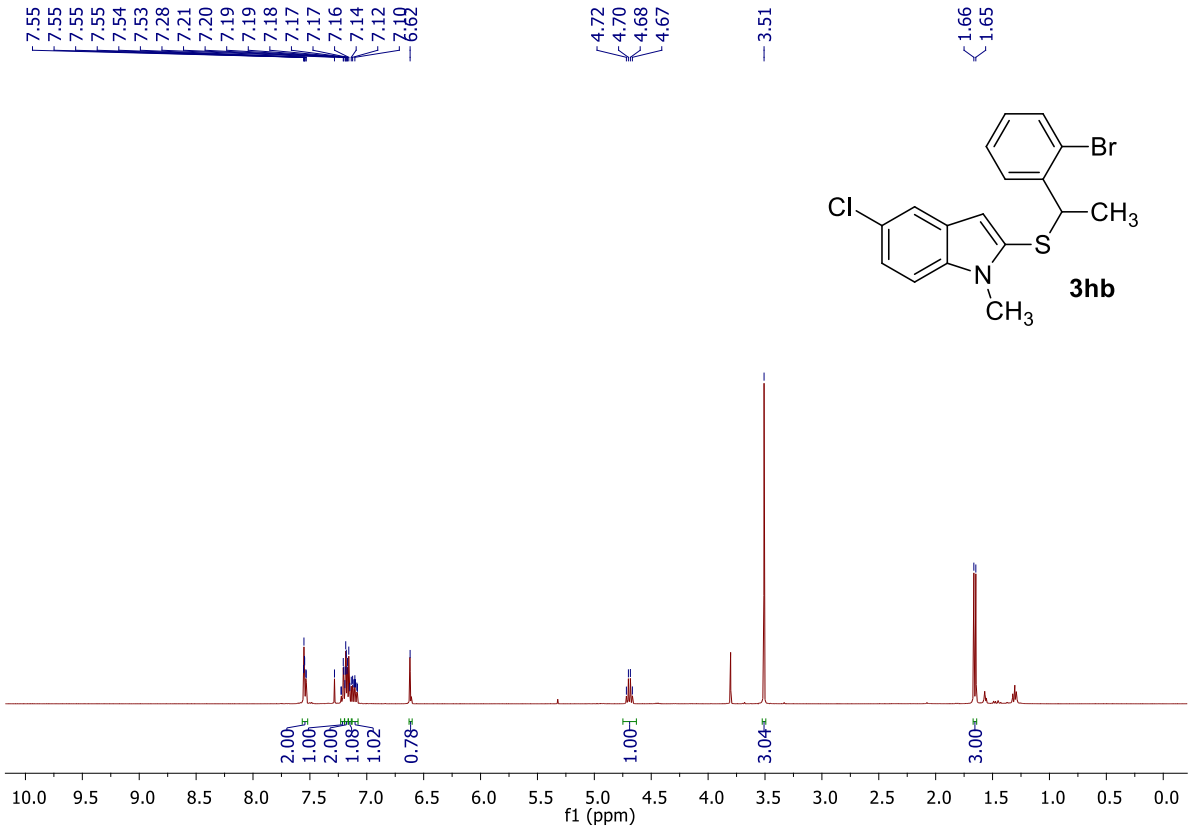


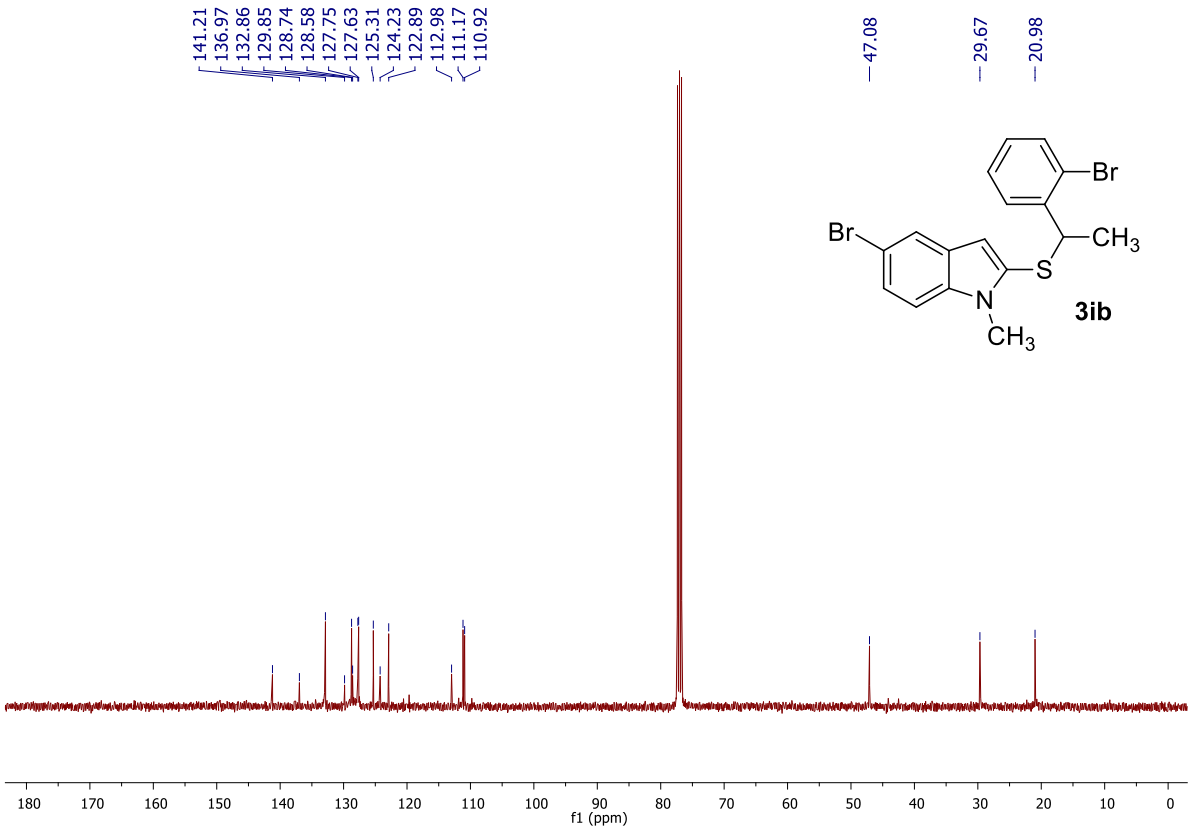
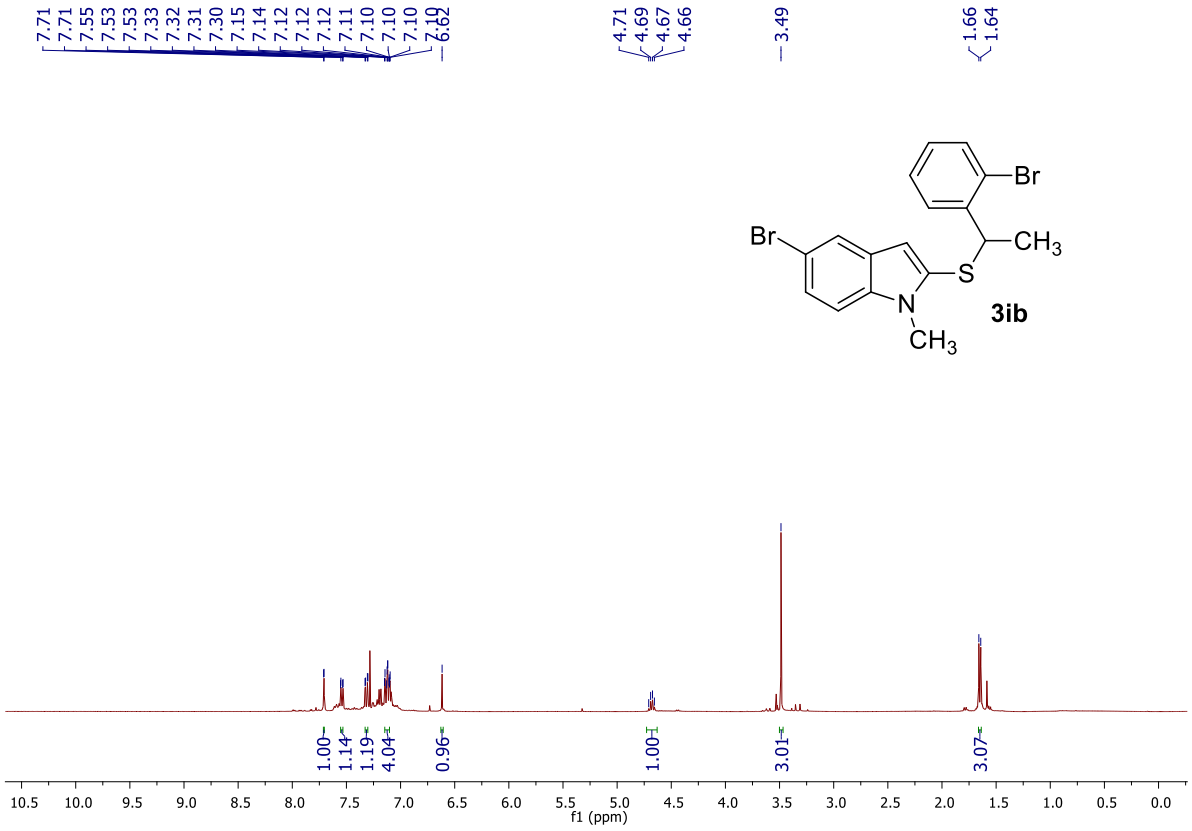


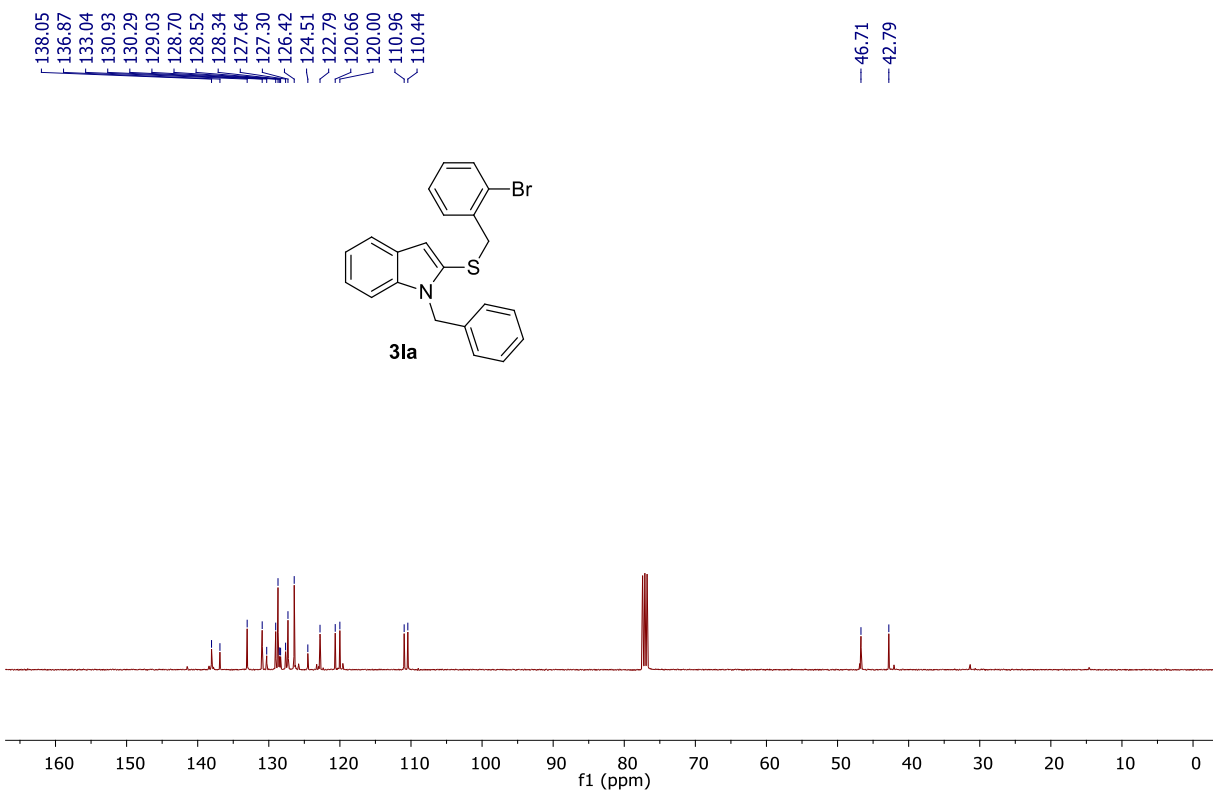
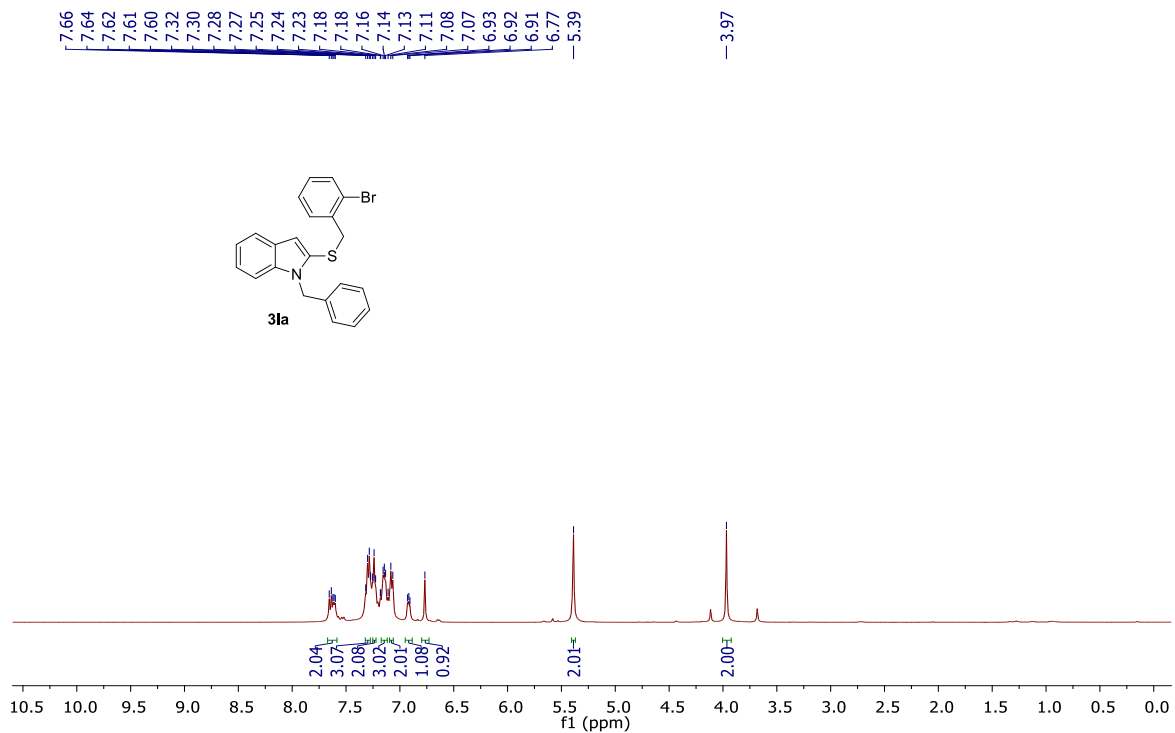


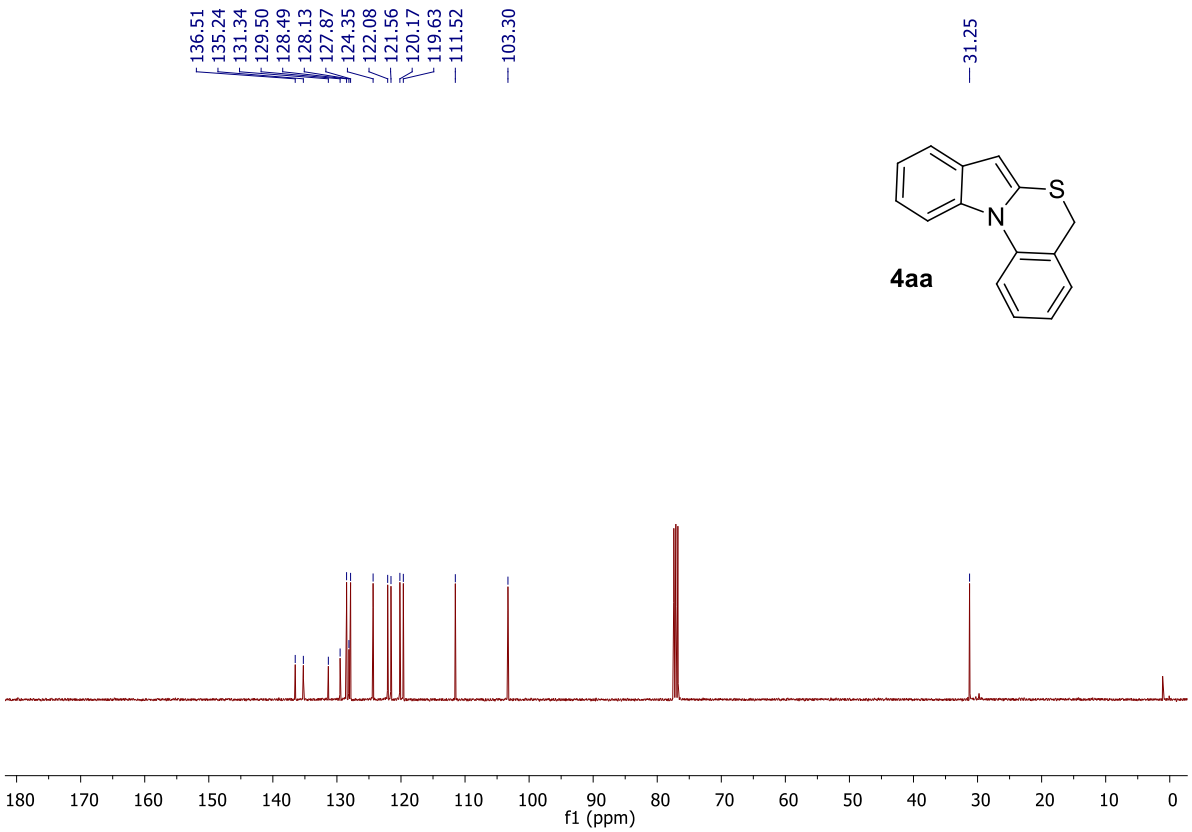
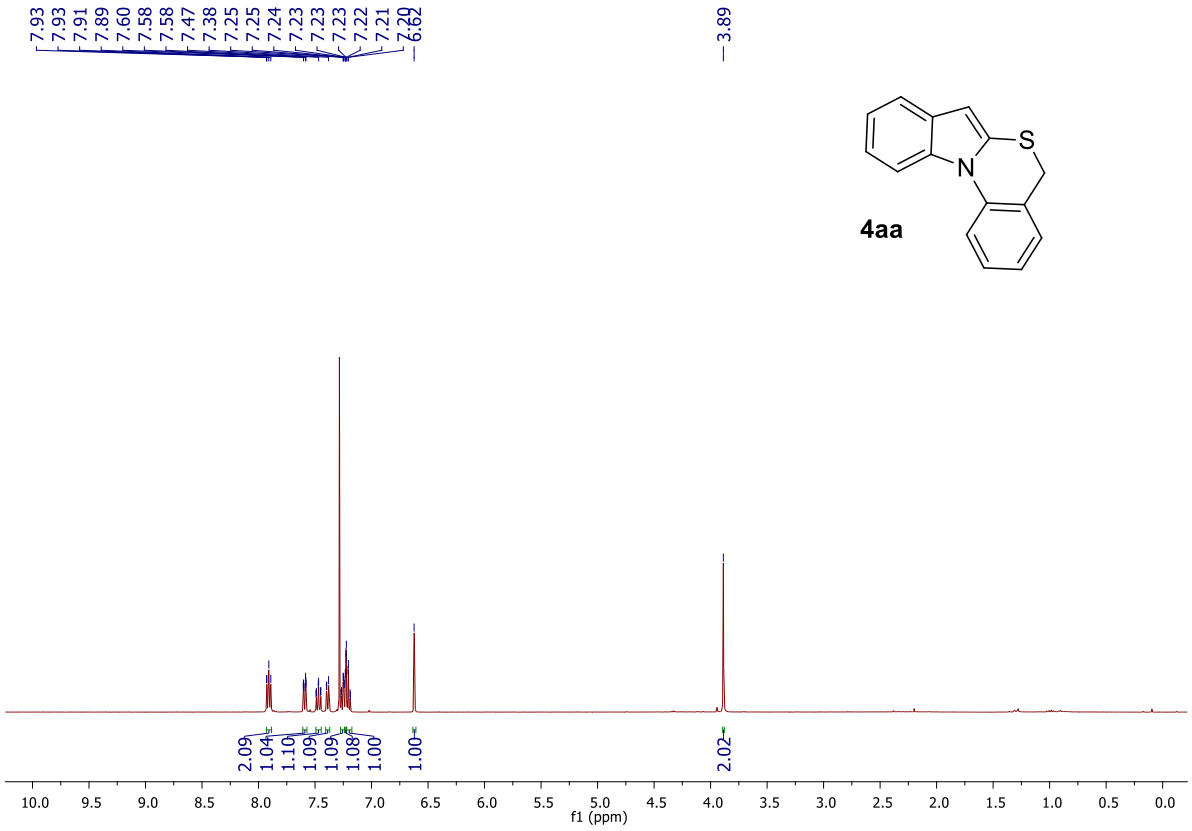


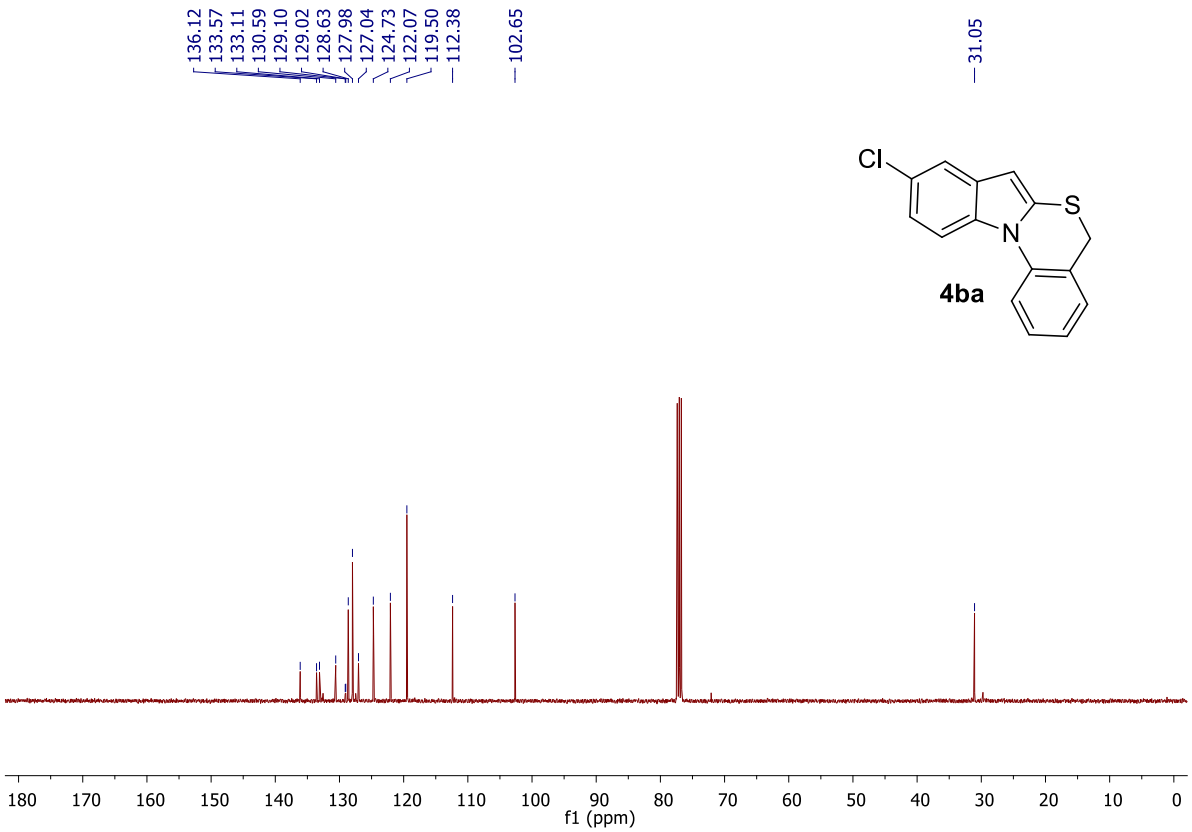
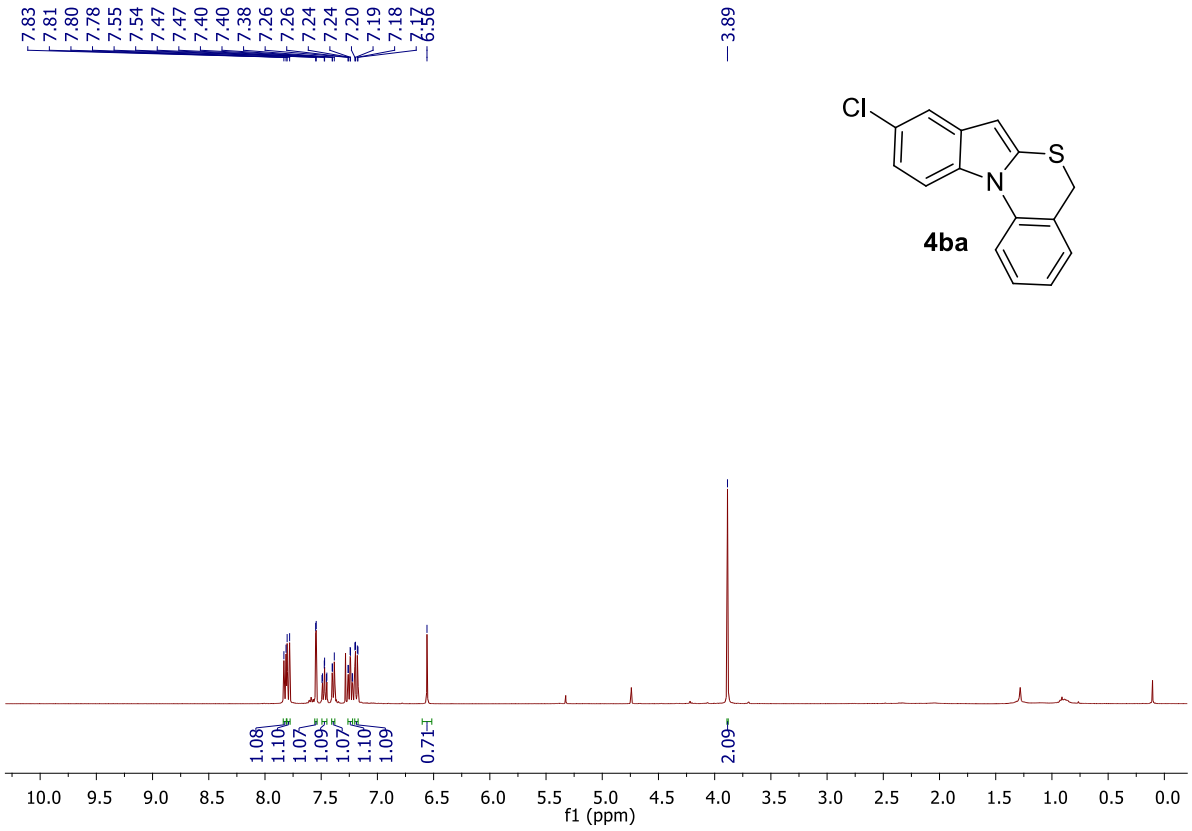


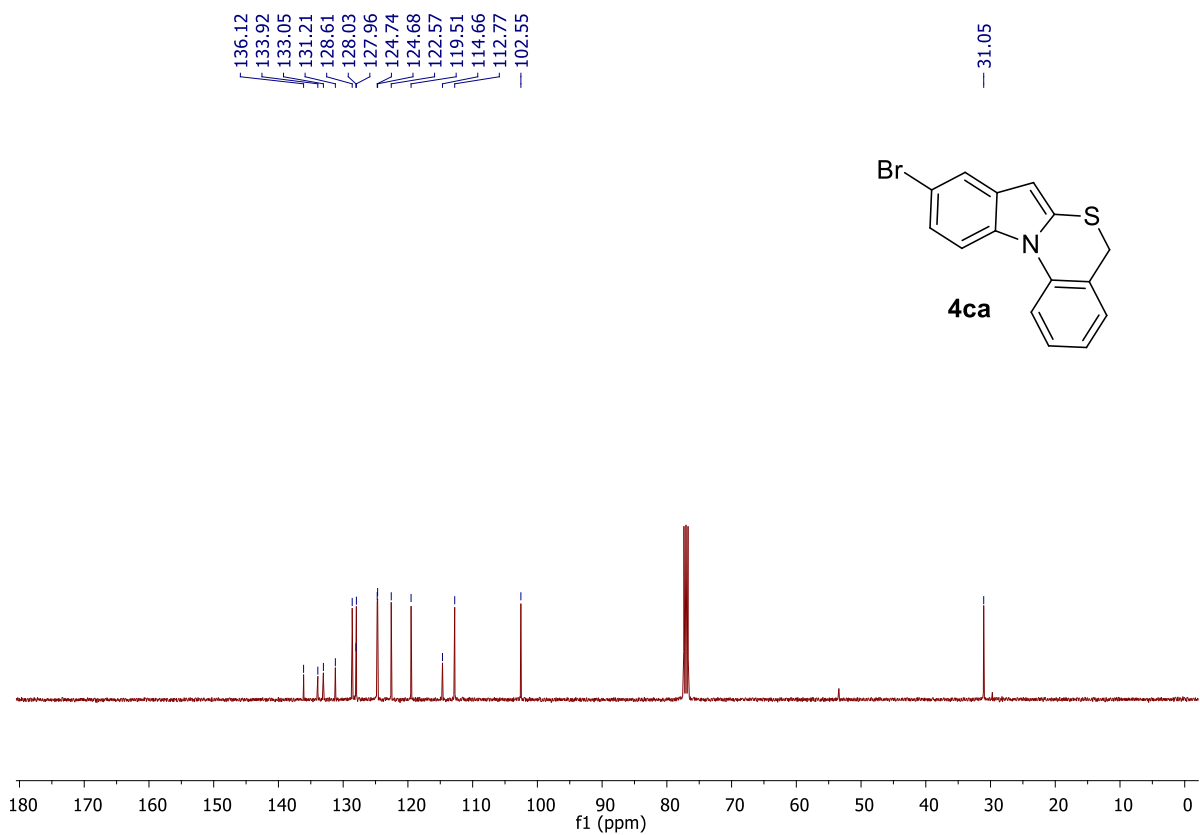
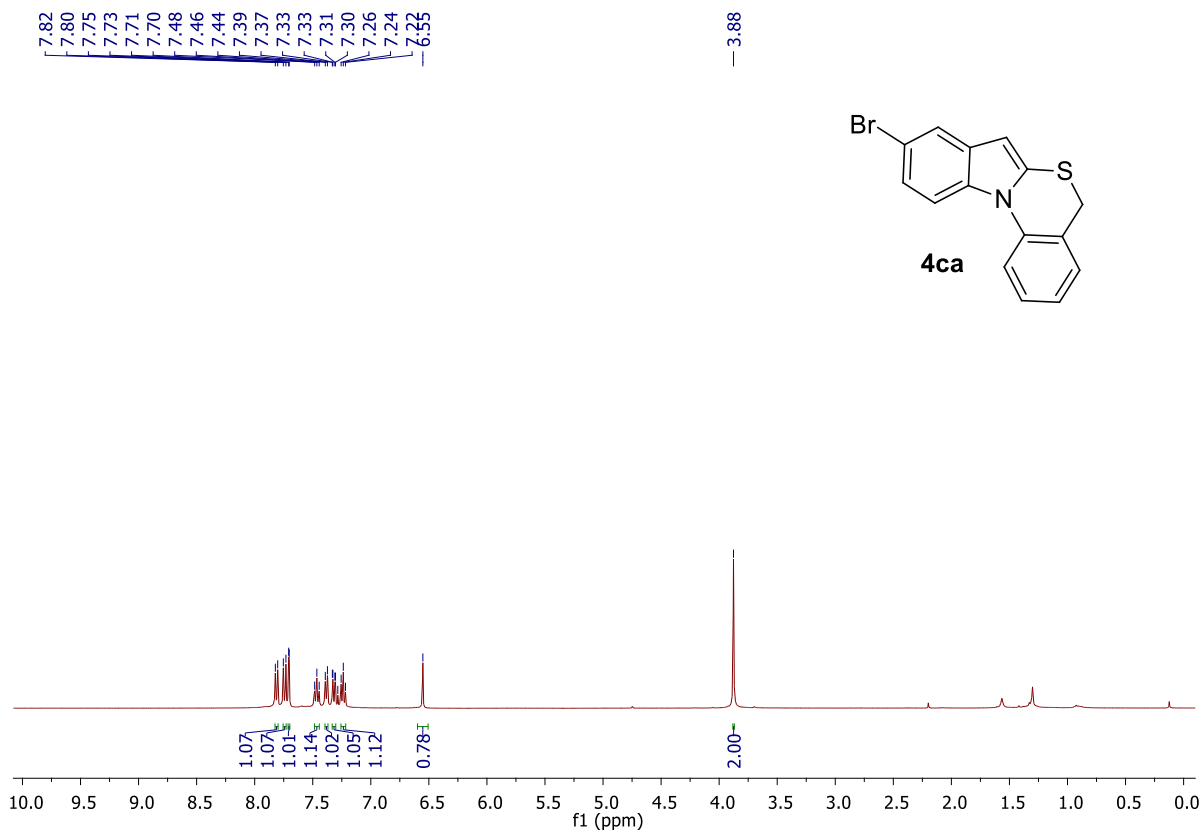


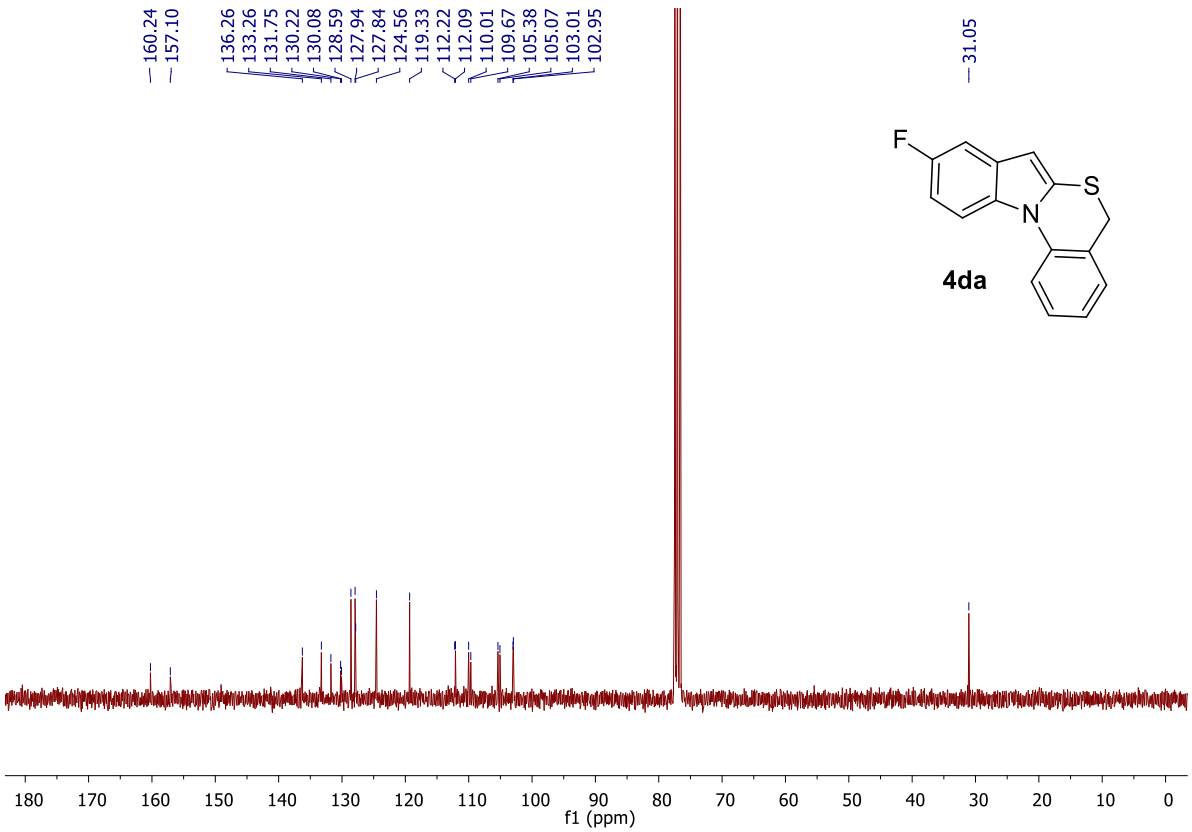
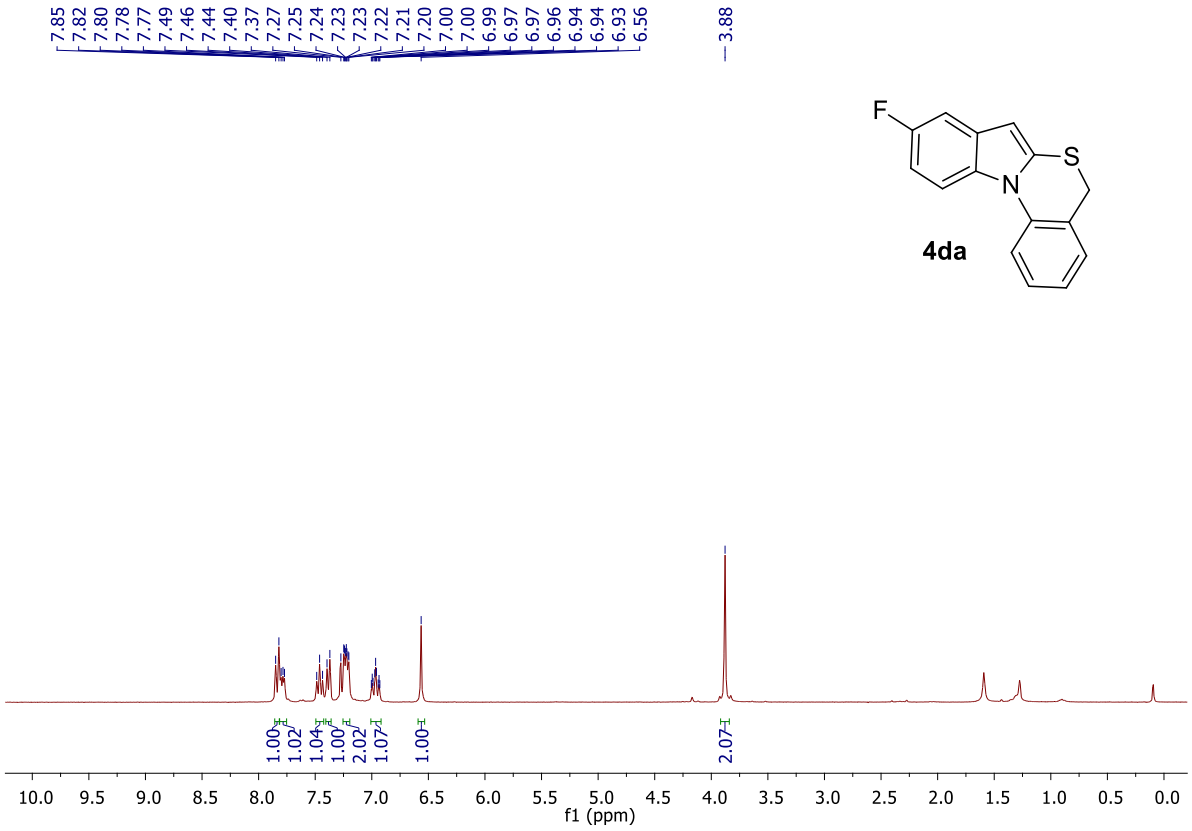




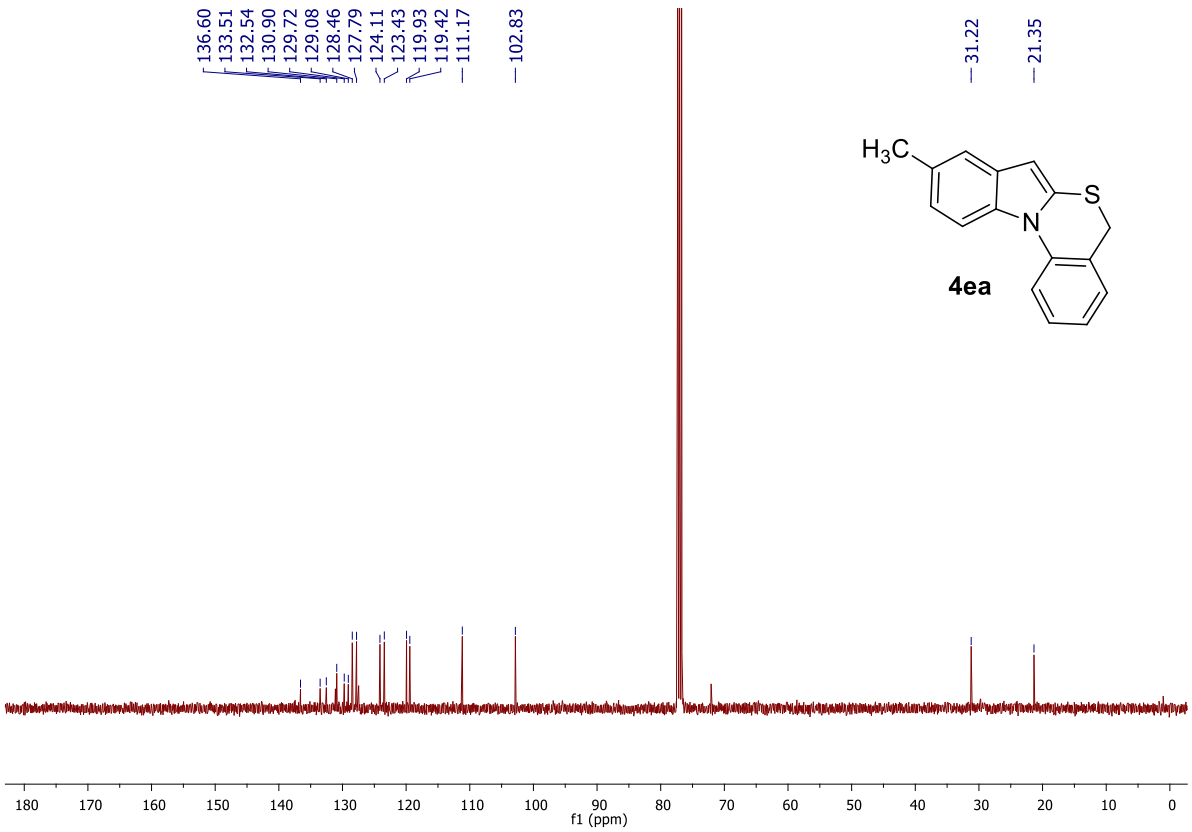
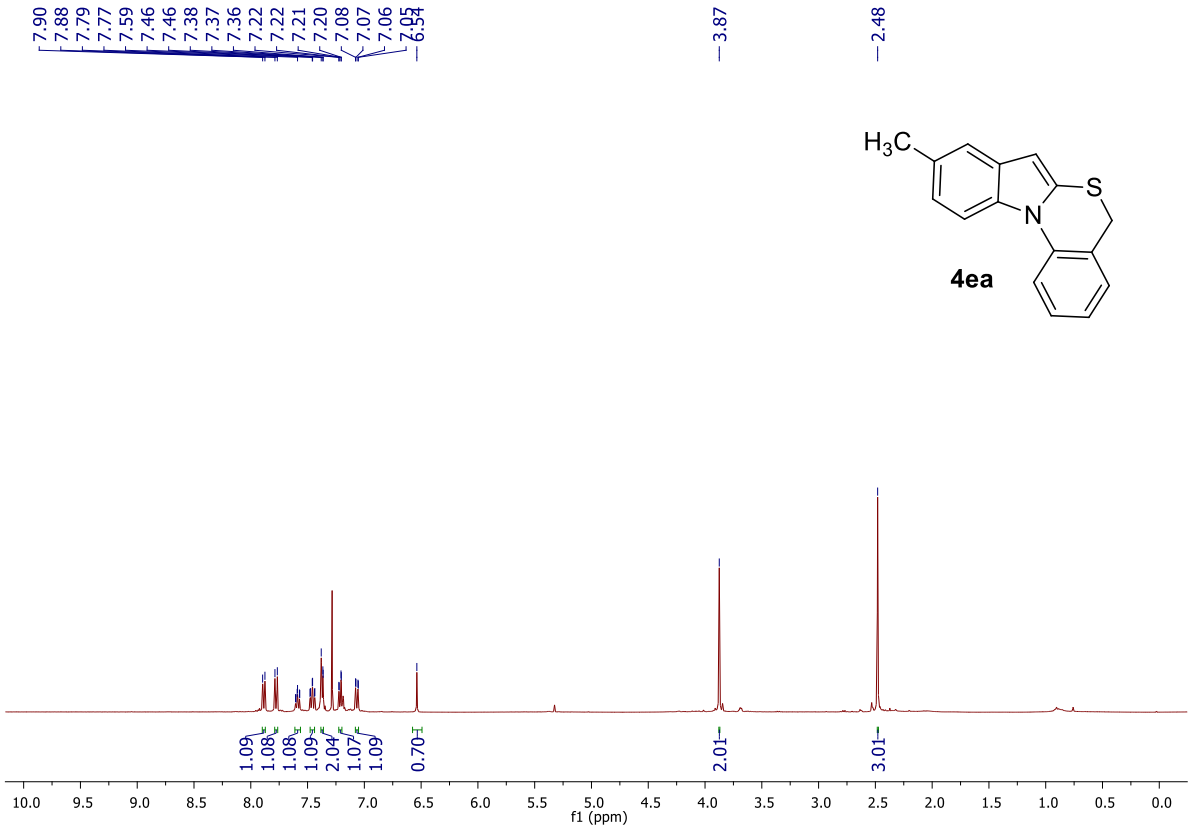


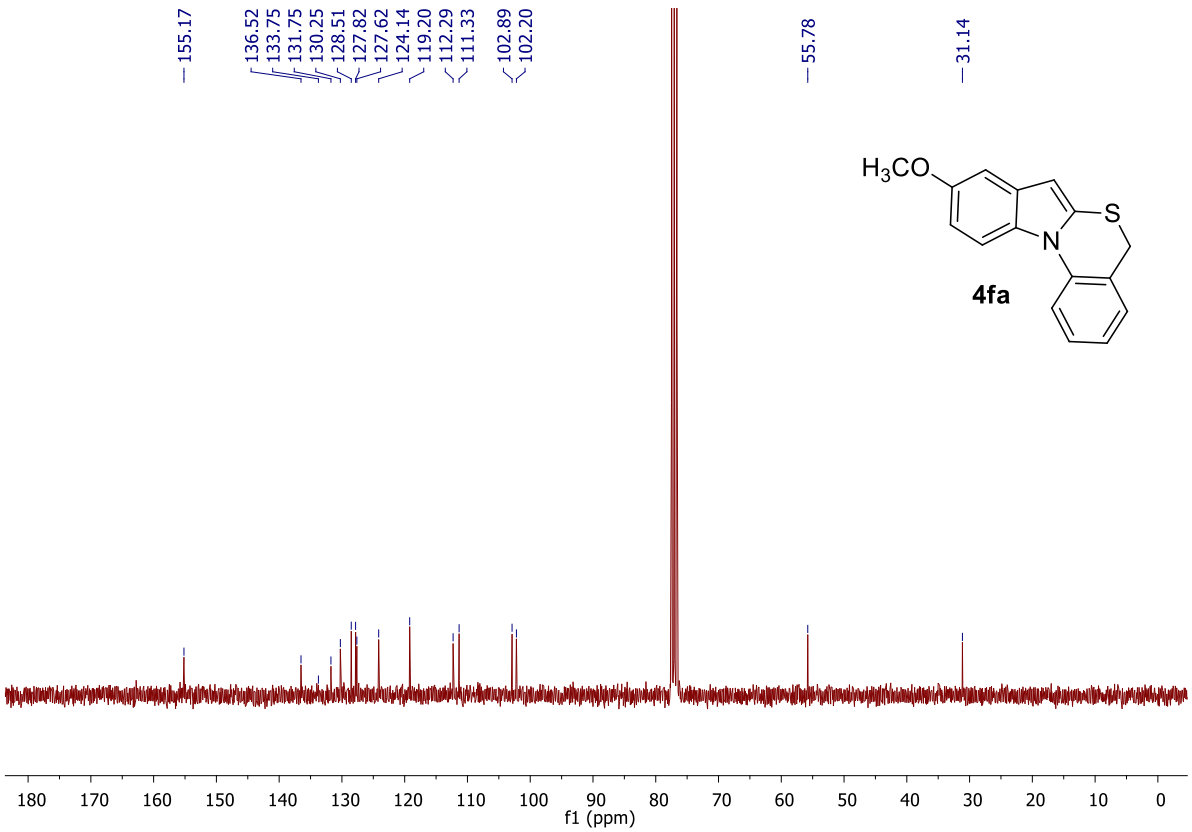
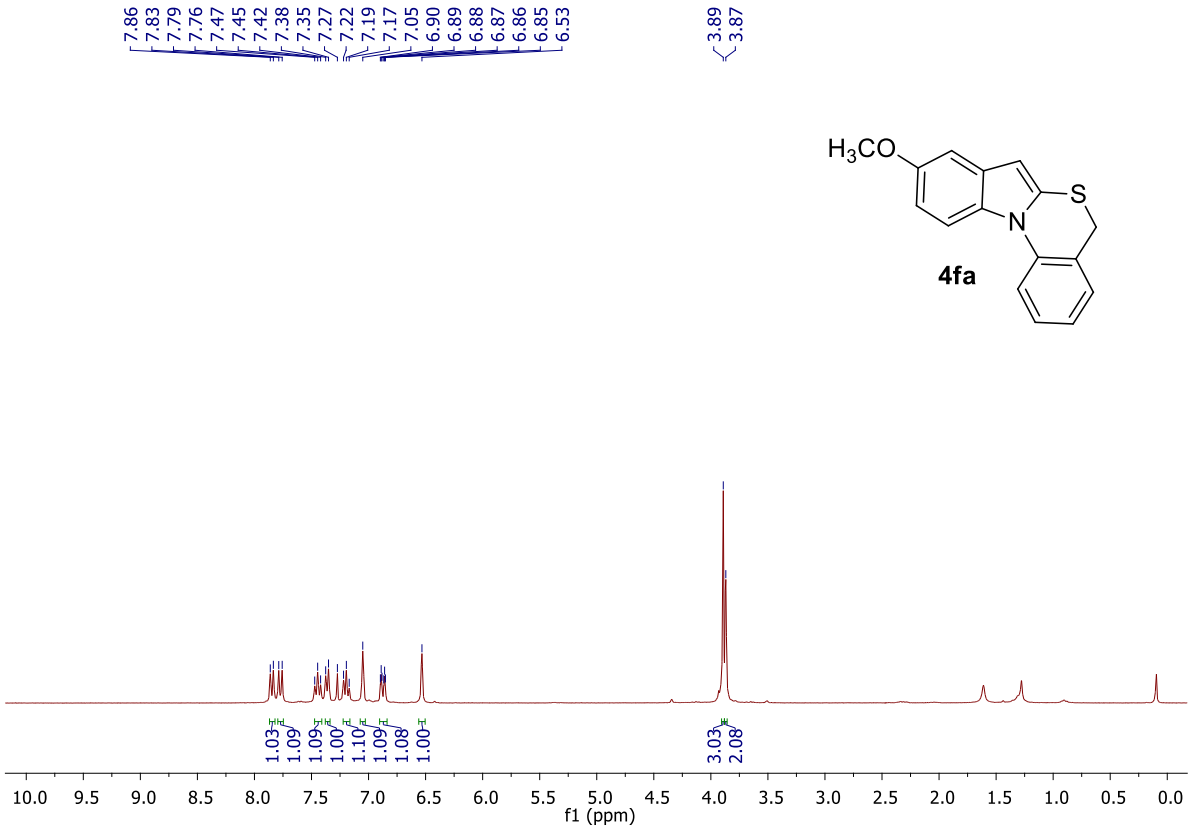


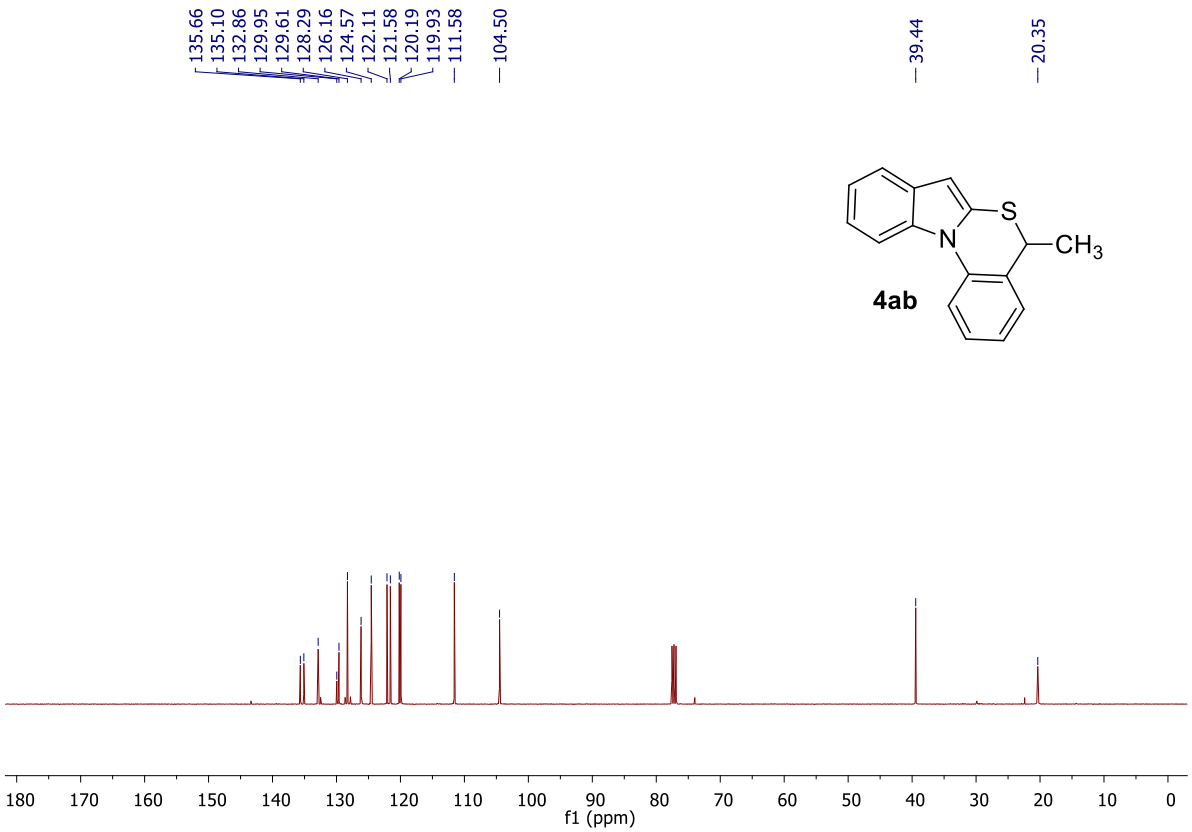
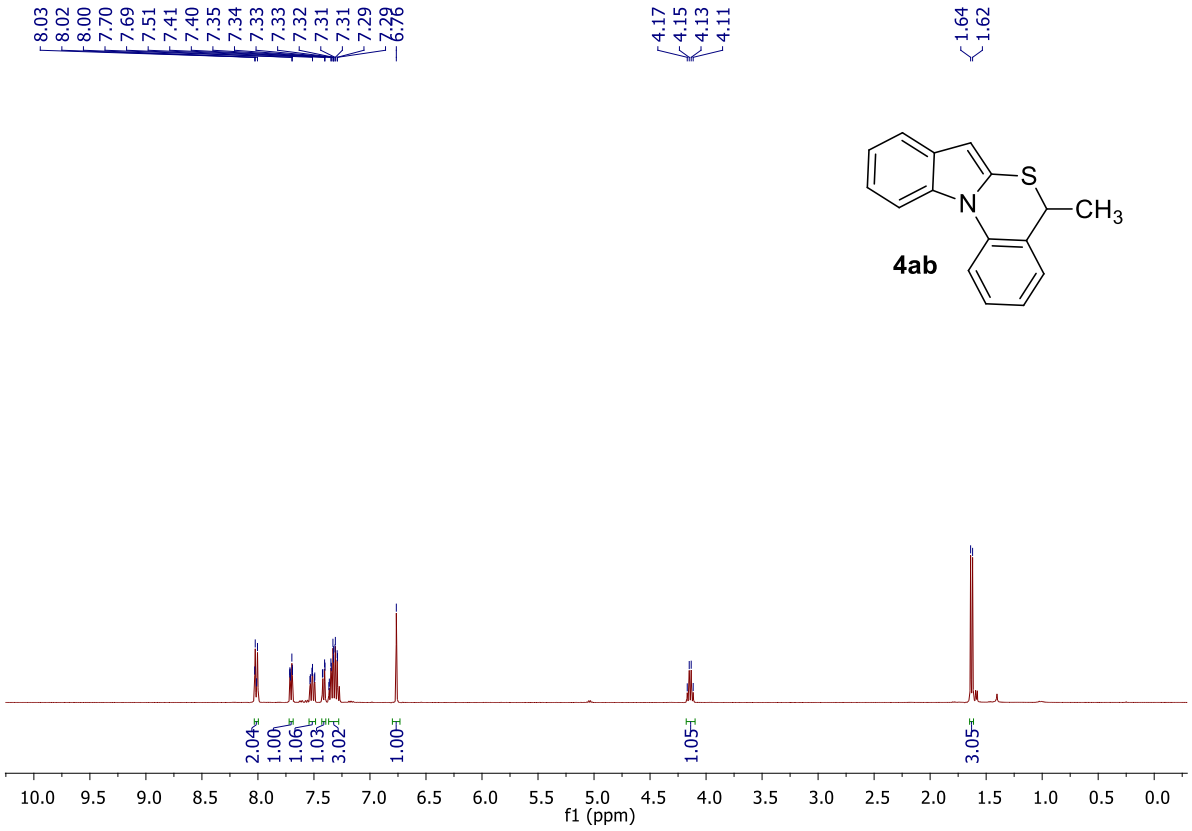


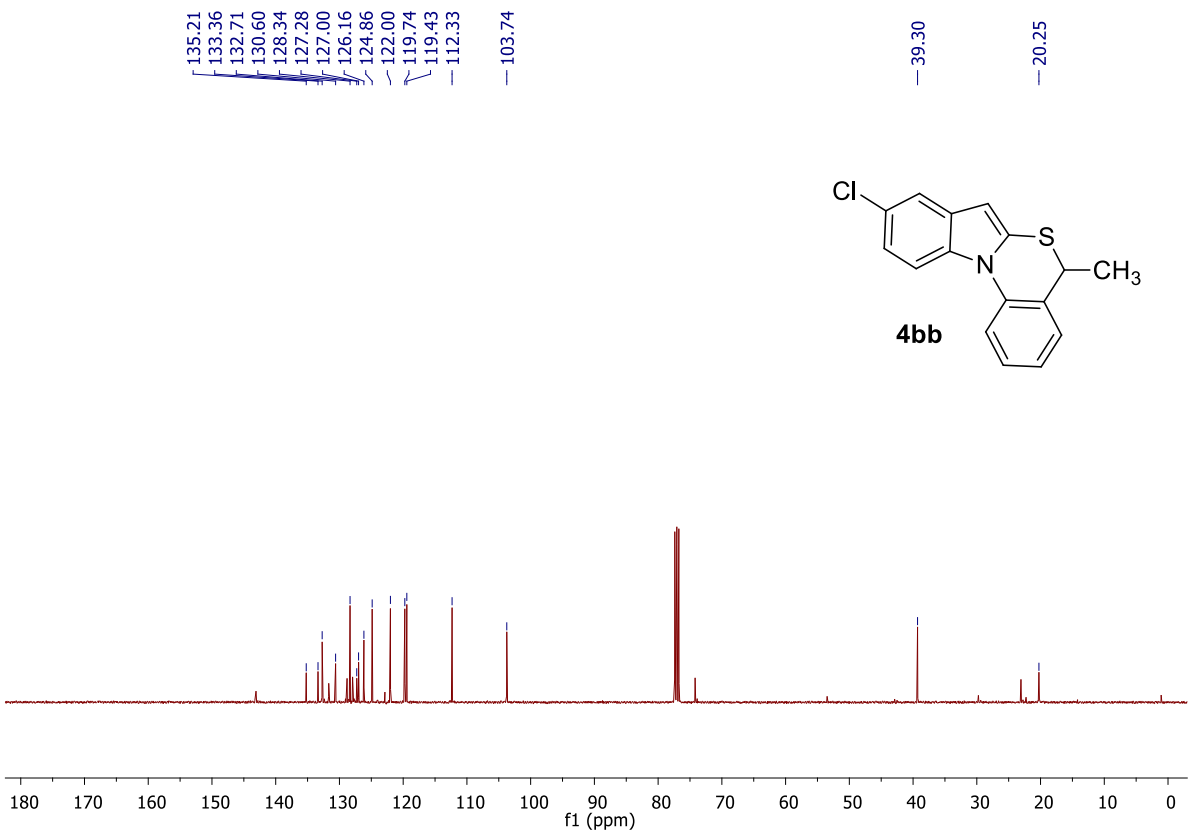
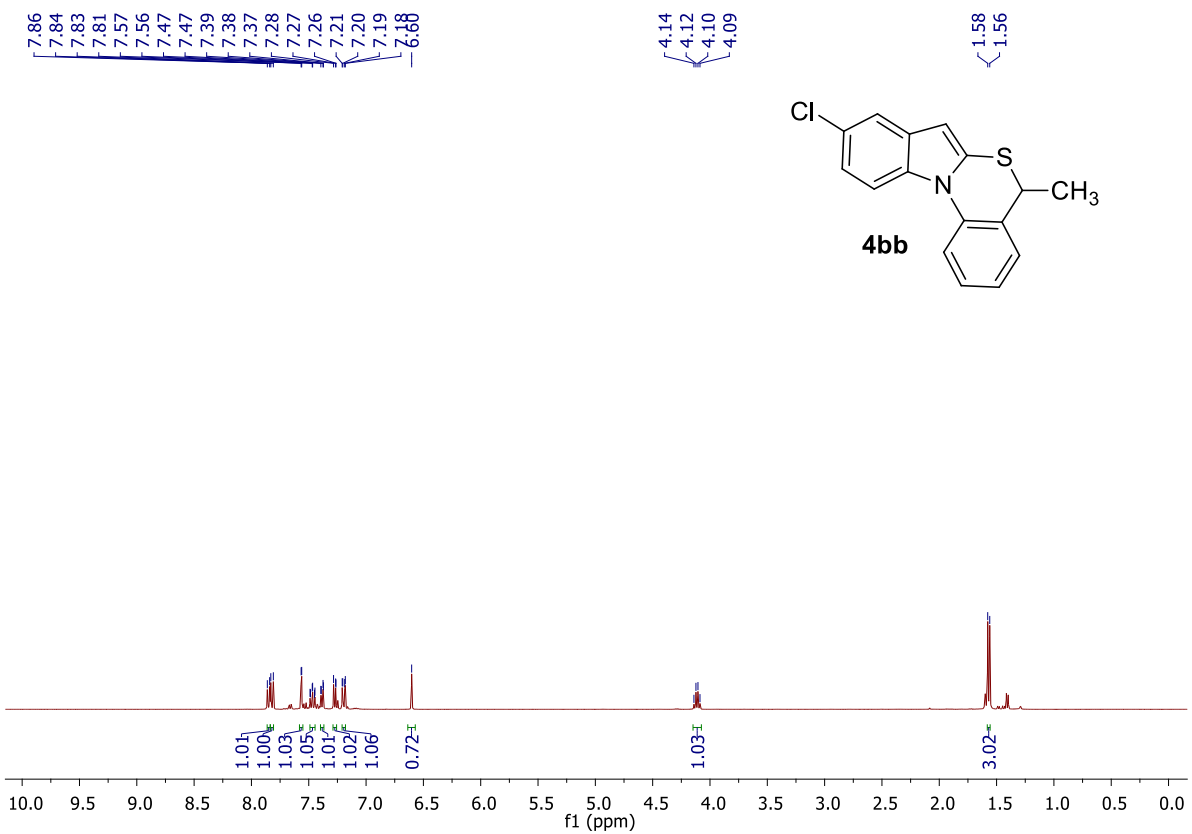


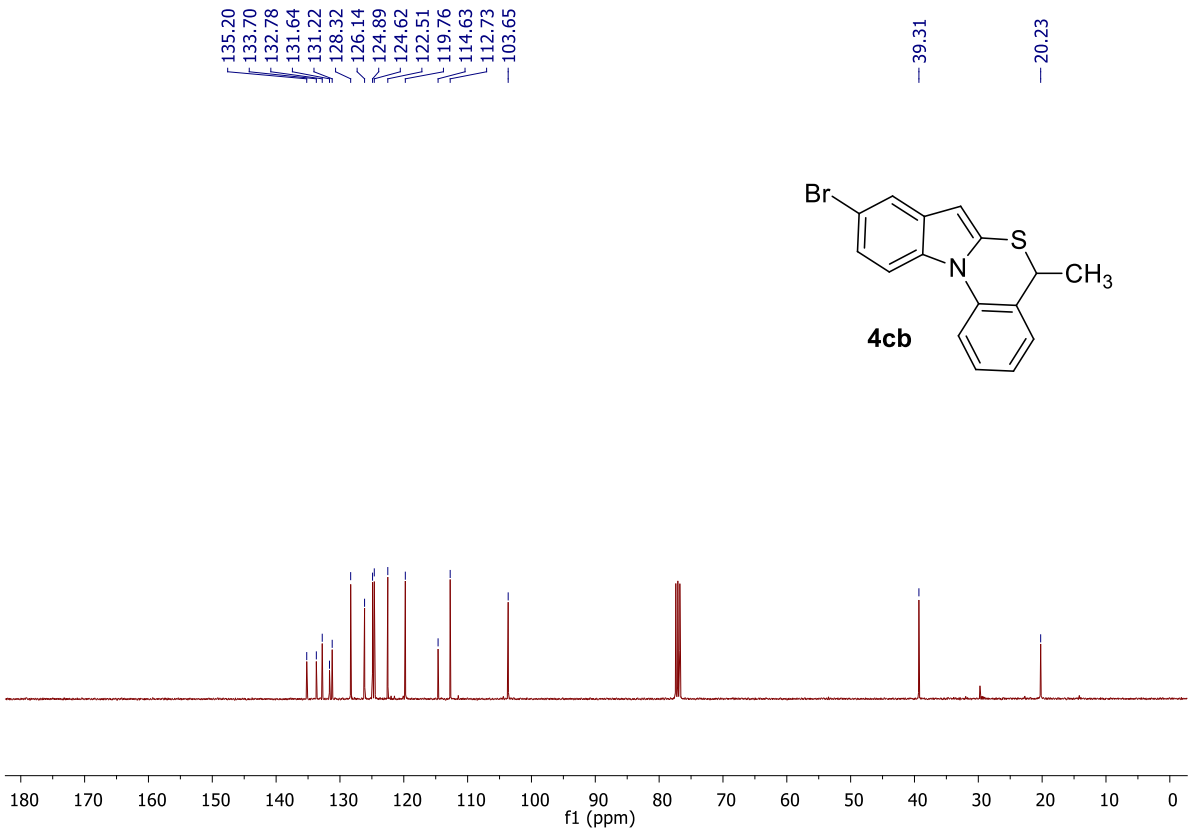
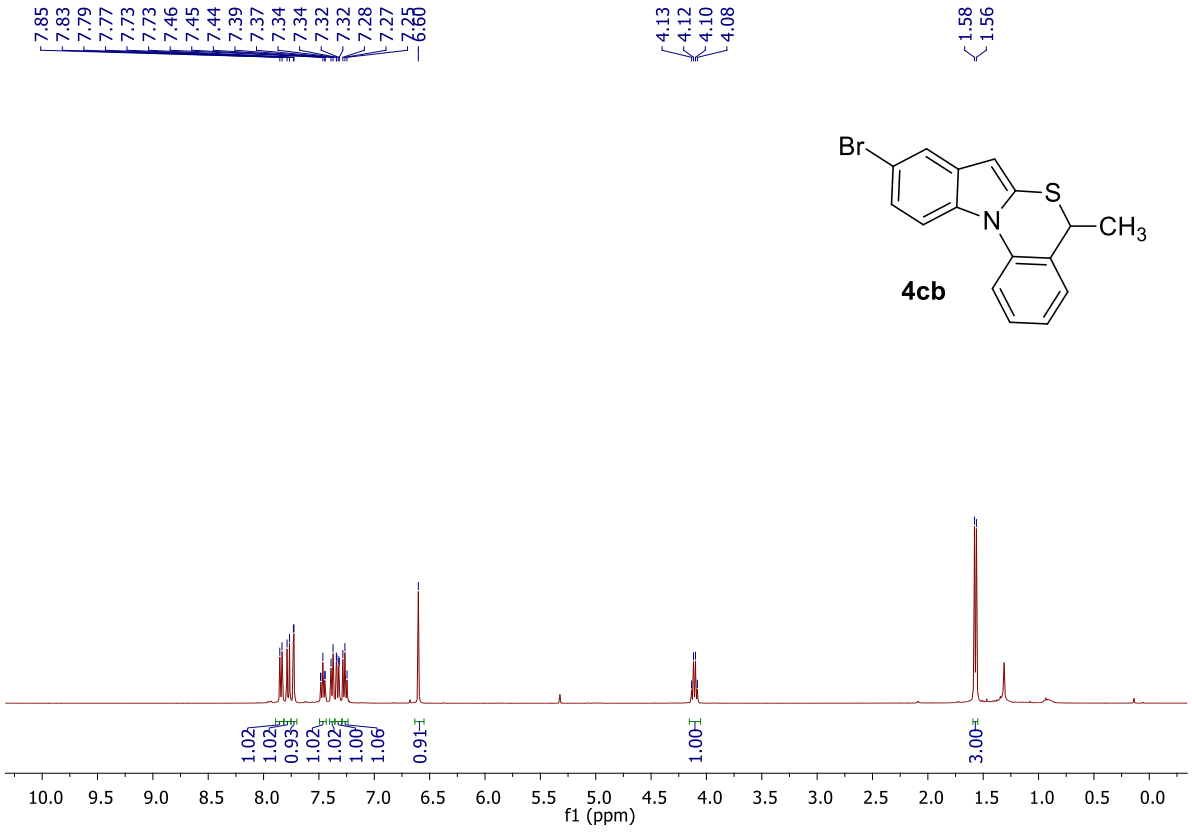


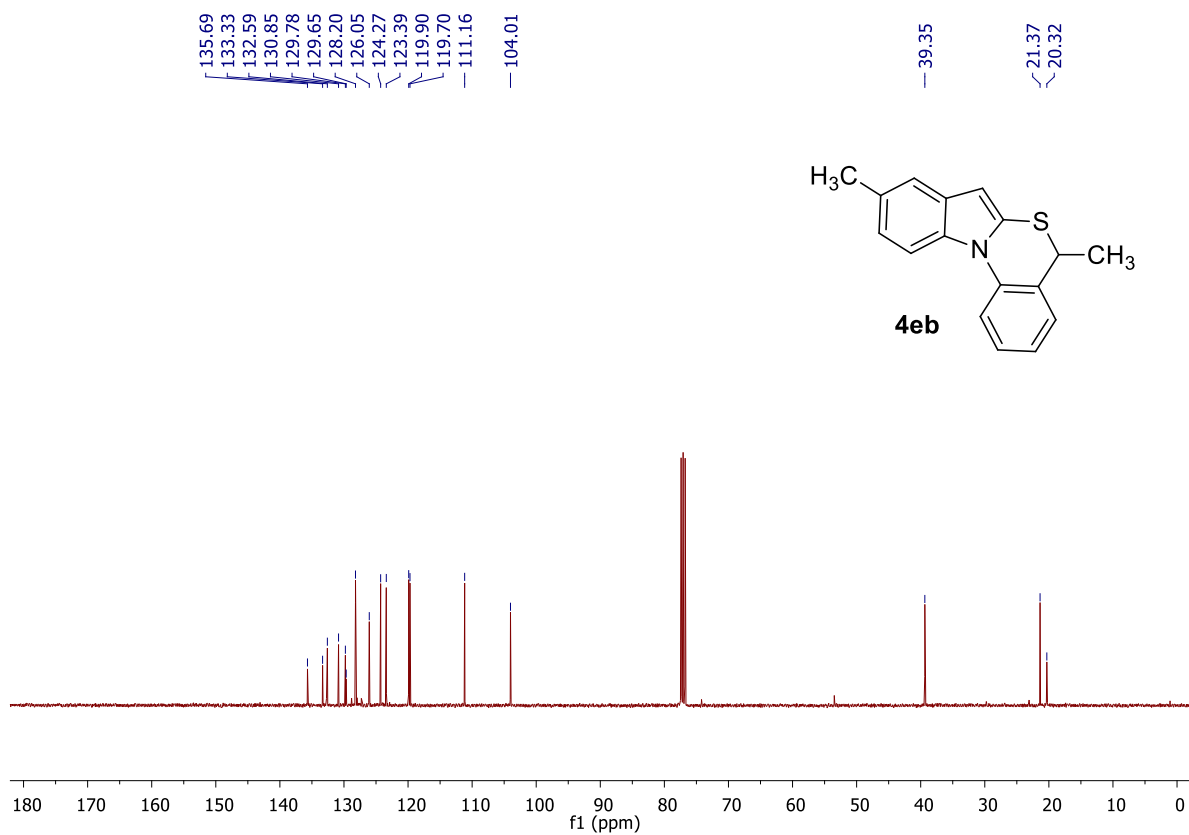
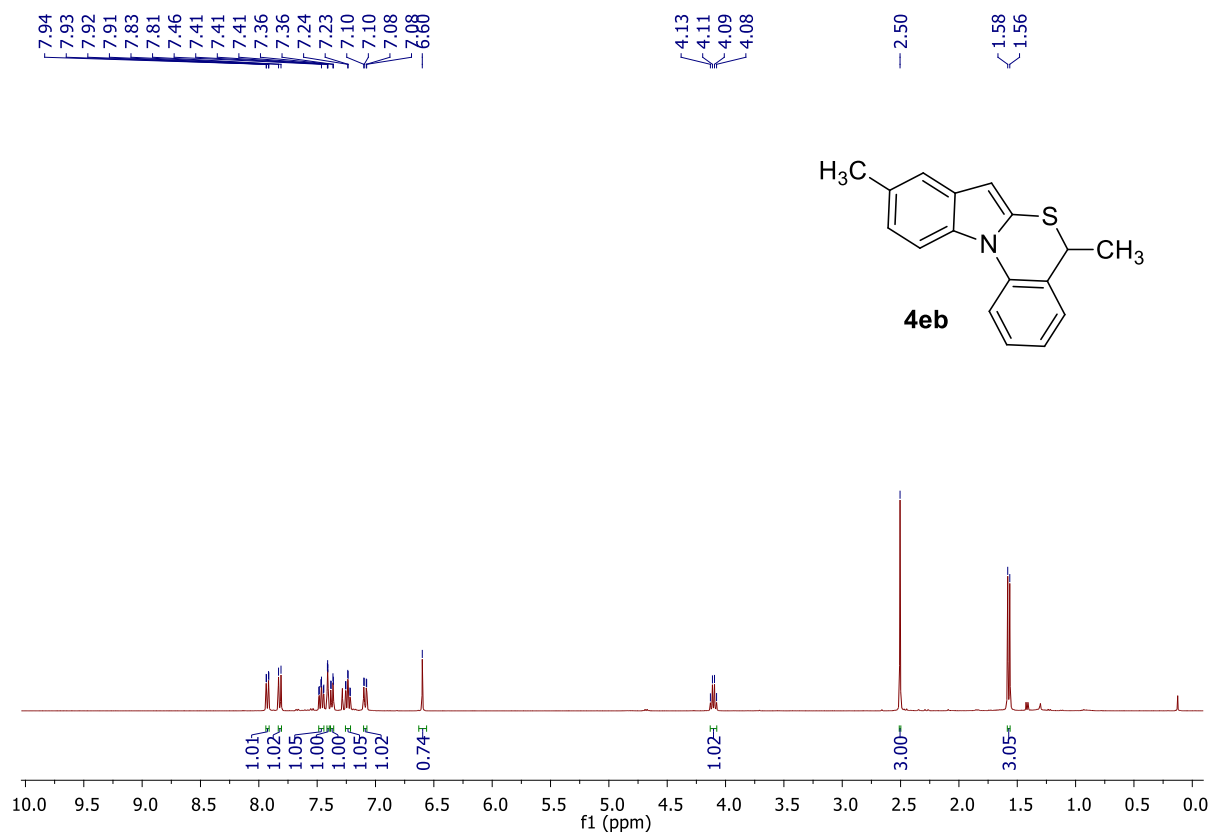


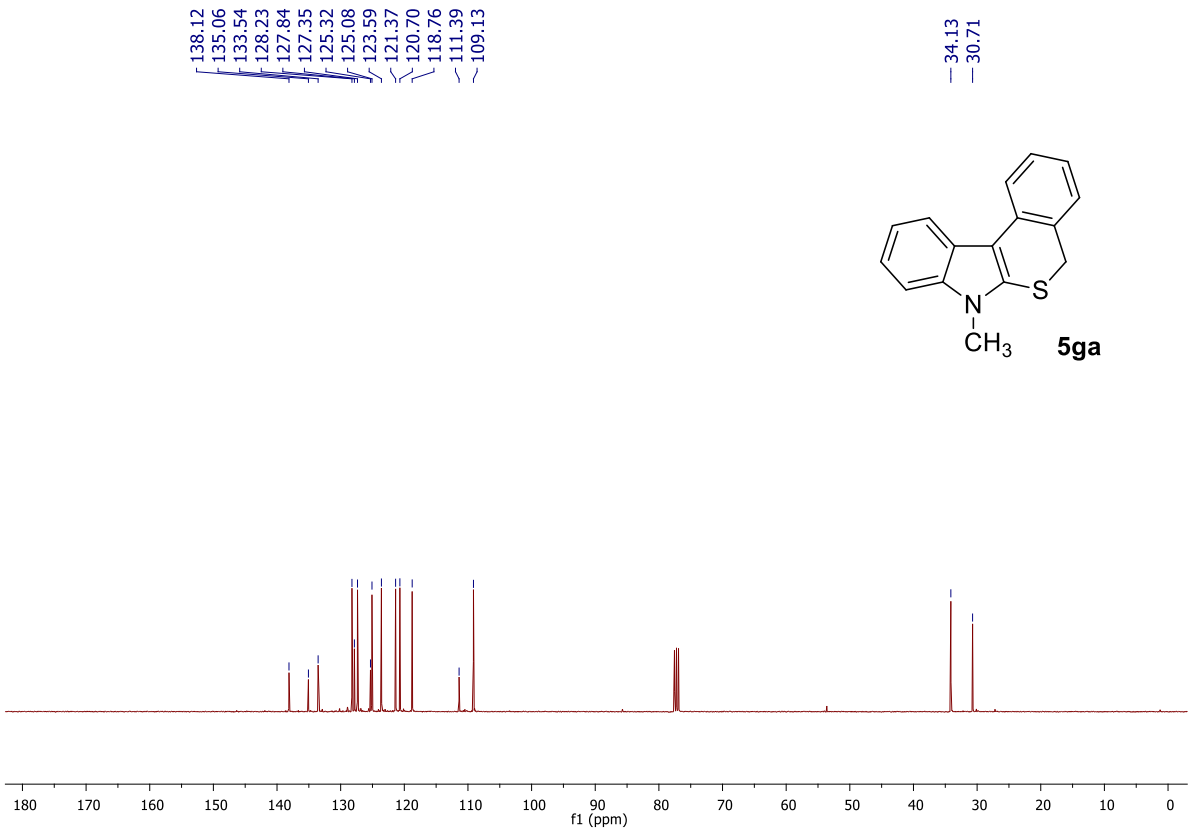
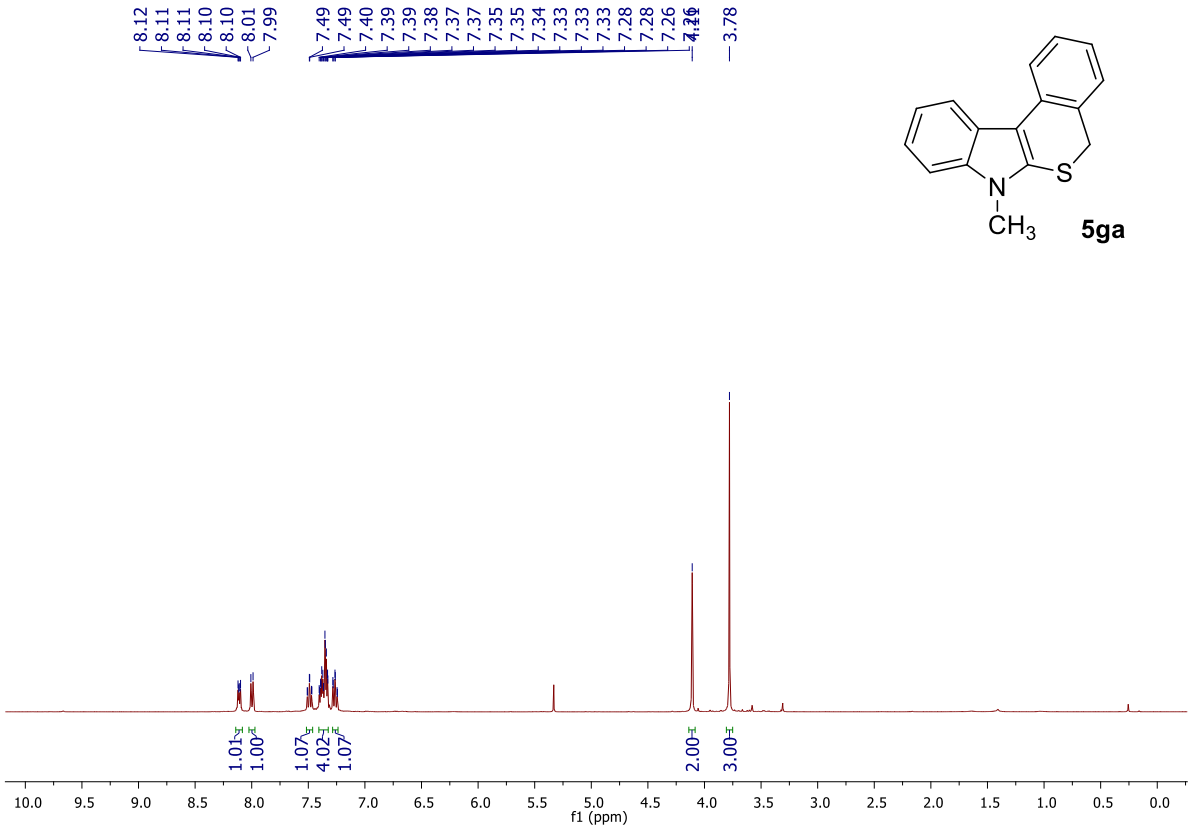


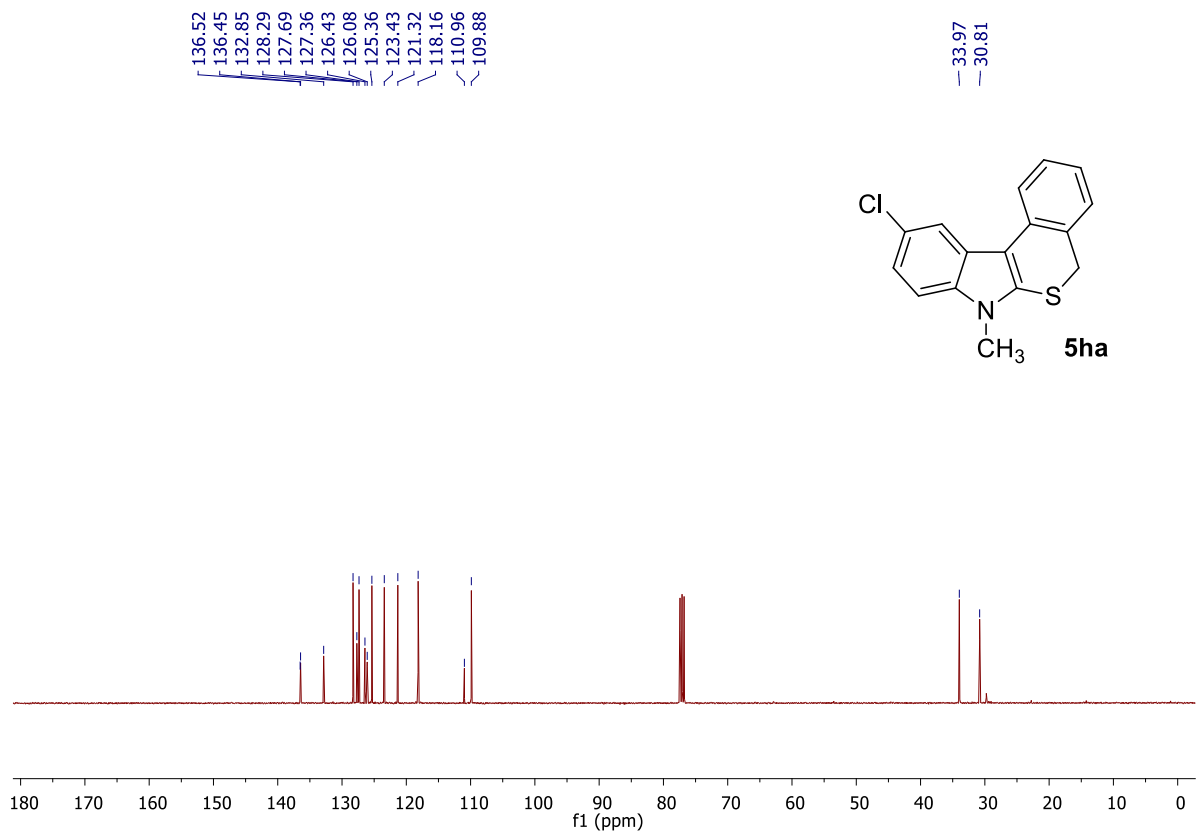
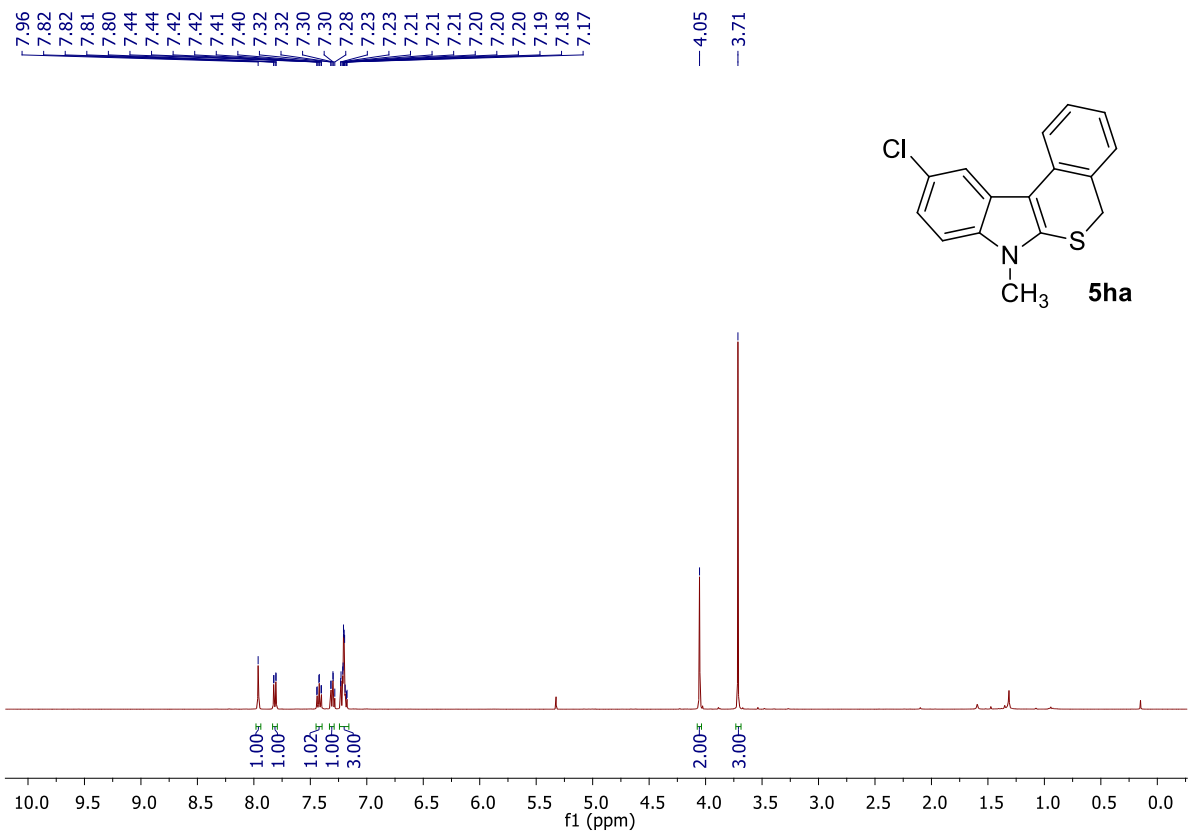








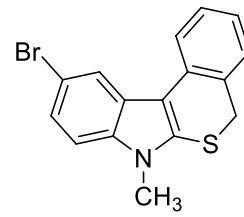




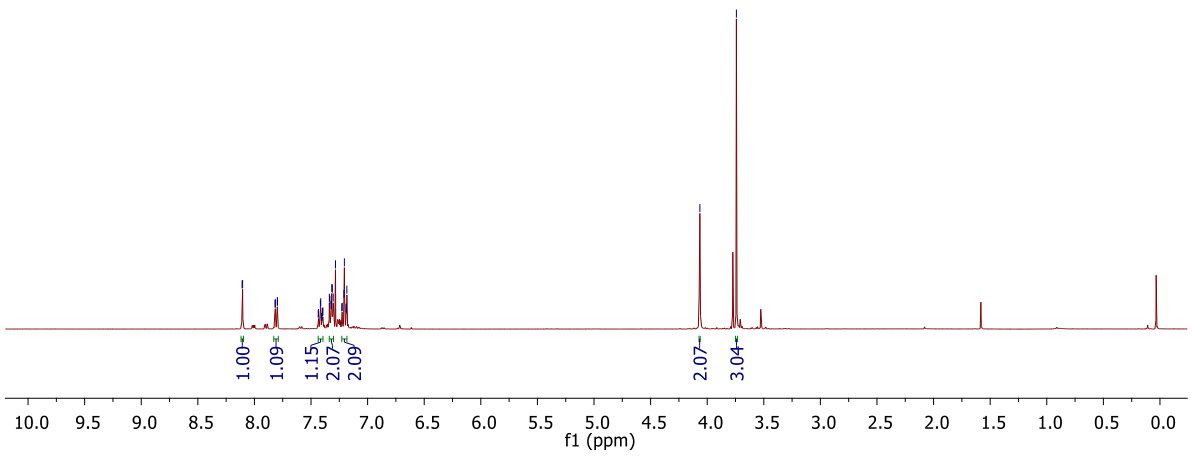


8.11  
8.10  
7.82  
7.82  
7.80  
7.80  
7.44  
7.43  
7.42  
7.41  
7.41  
7.40  
7.40  
7.34  
7.33  
7.32  
7.32  
7.32  
7.31  
7.30  
7.28  
7.23  
7.22  
7.21  
7.21  
7.19  
7.19  
7.18

4.06  
3.74

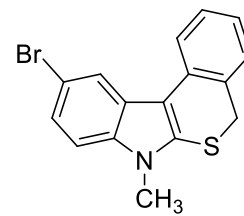


5ia



136.71  
136.37  
132.79  
128.28  
127.69  
127.33  
125.38  
123.92  
123.46  
121.15  
118.67  
114.06  
110.31  
109.00

33.98  
30.82



5ia

