

Figure SI-1. Overlay of ubiquitin ^1H NMR spectra in D_2O (backbone amide region). Sample that undergone 3 Kbar pressure for 90 seconds is blue, control sample at atmospheric pressure is red. Peak integration shows that ΔHDX between the two samples is 15.

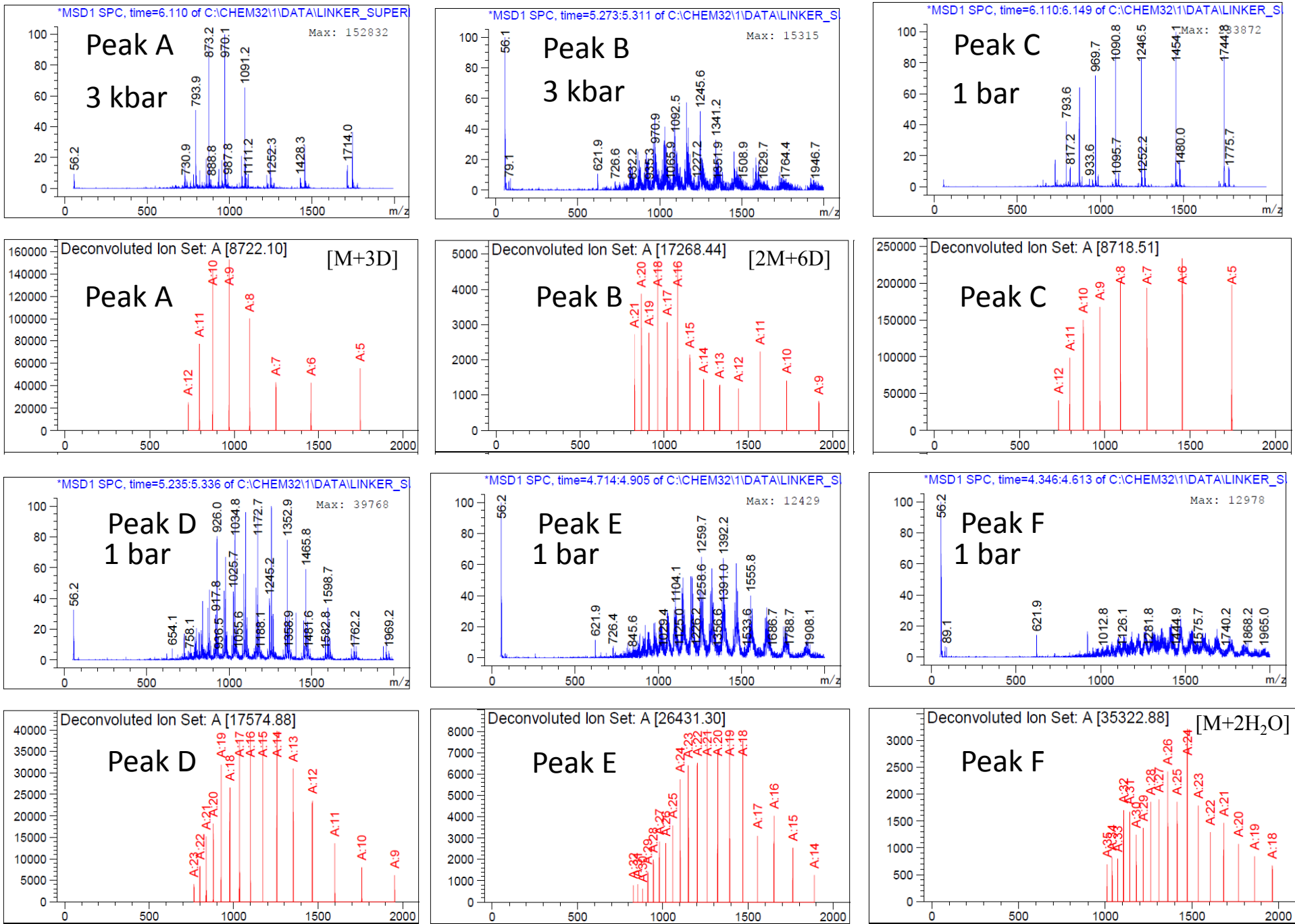


Figure SI-2. Examples of mass-spectra and de-convoluted mass-spectra from SEC-MS of ubiquitin reaction with linker (BS³) at different pressures (complimentary to Figure 2A)