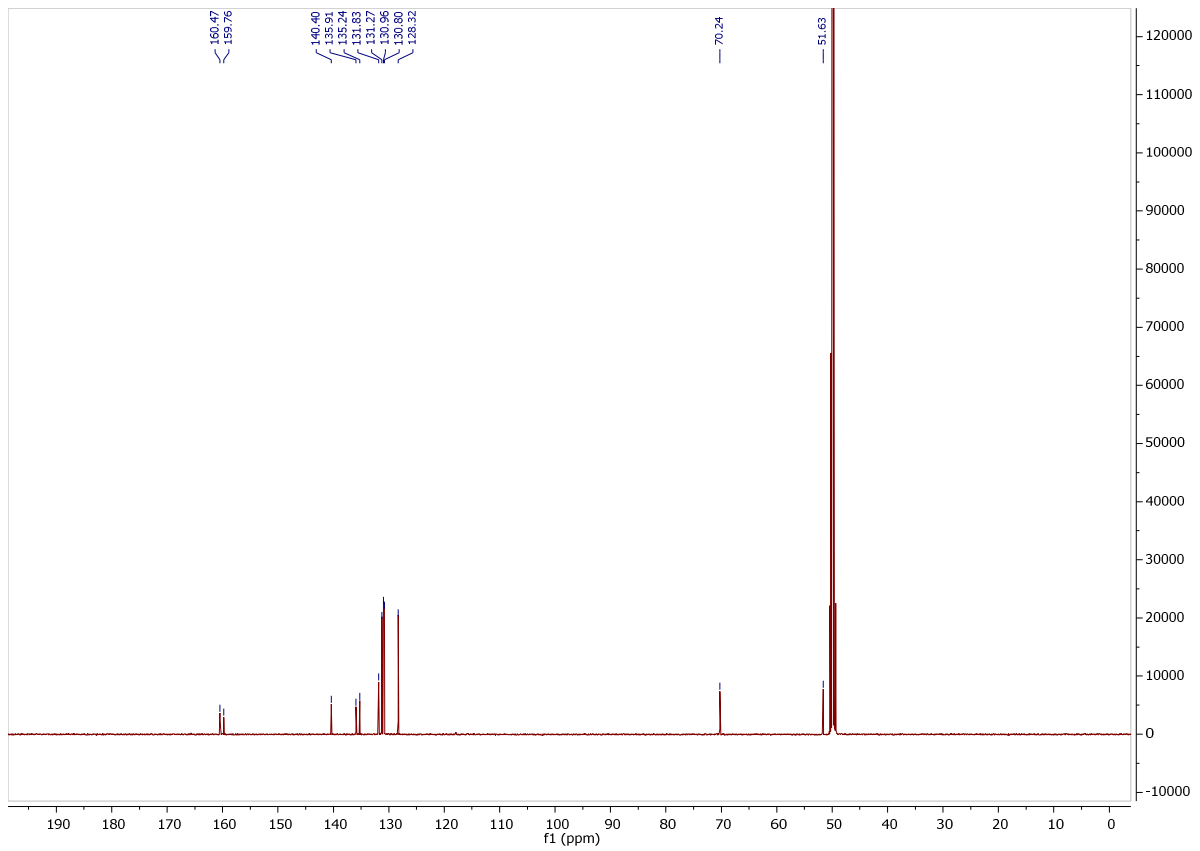
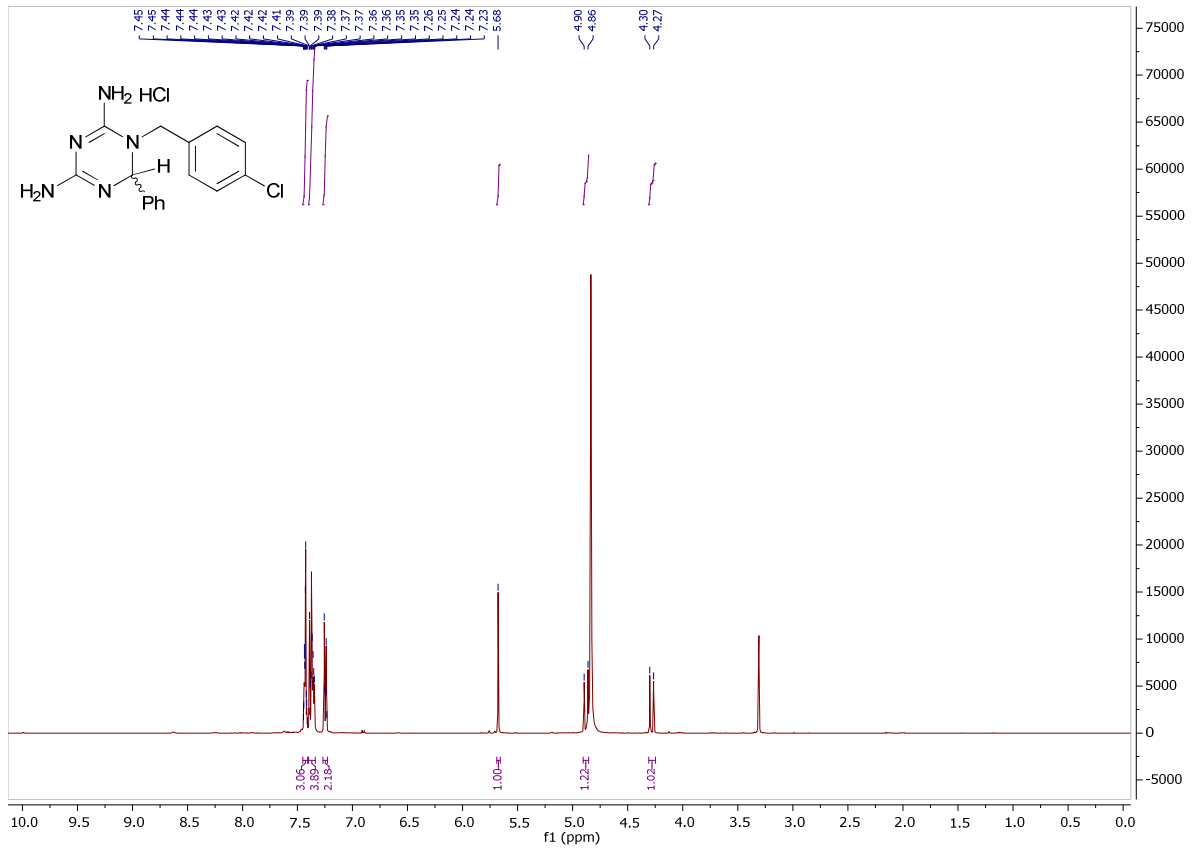
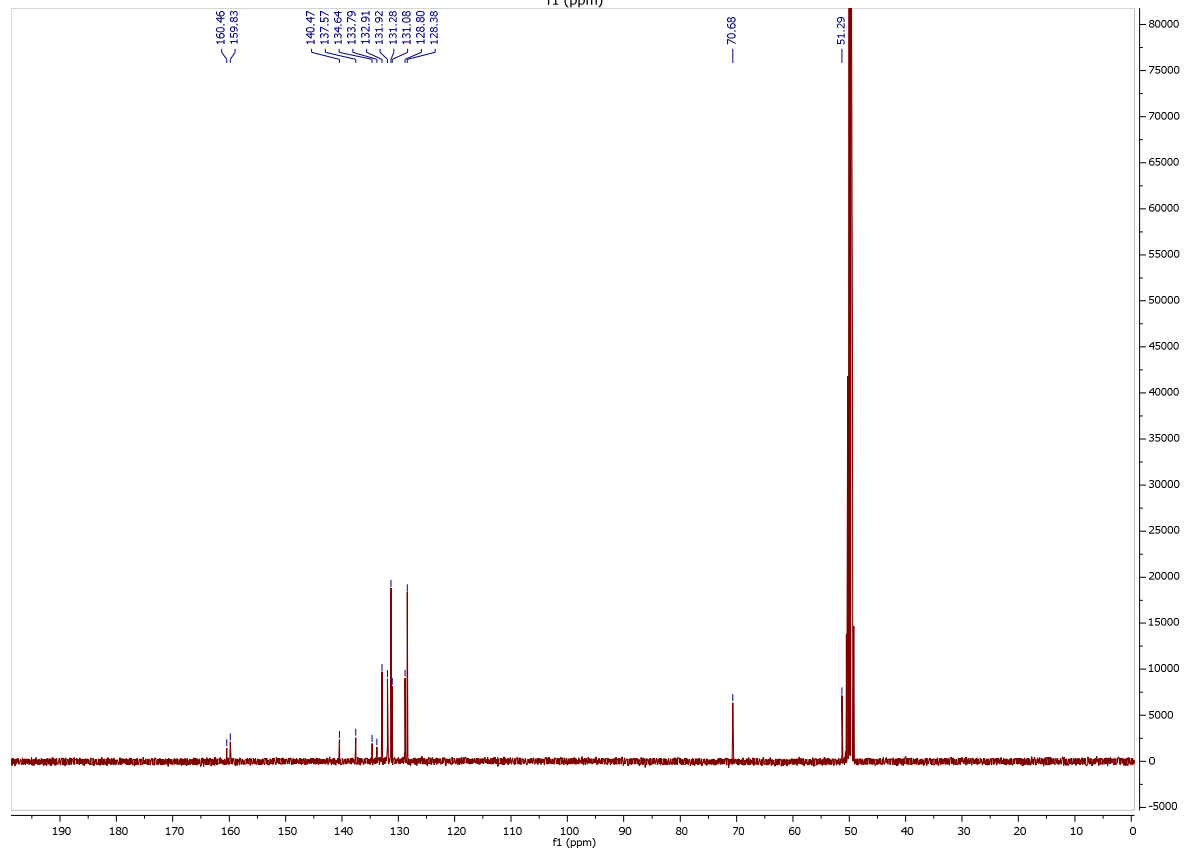
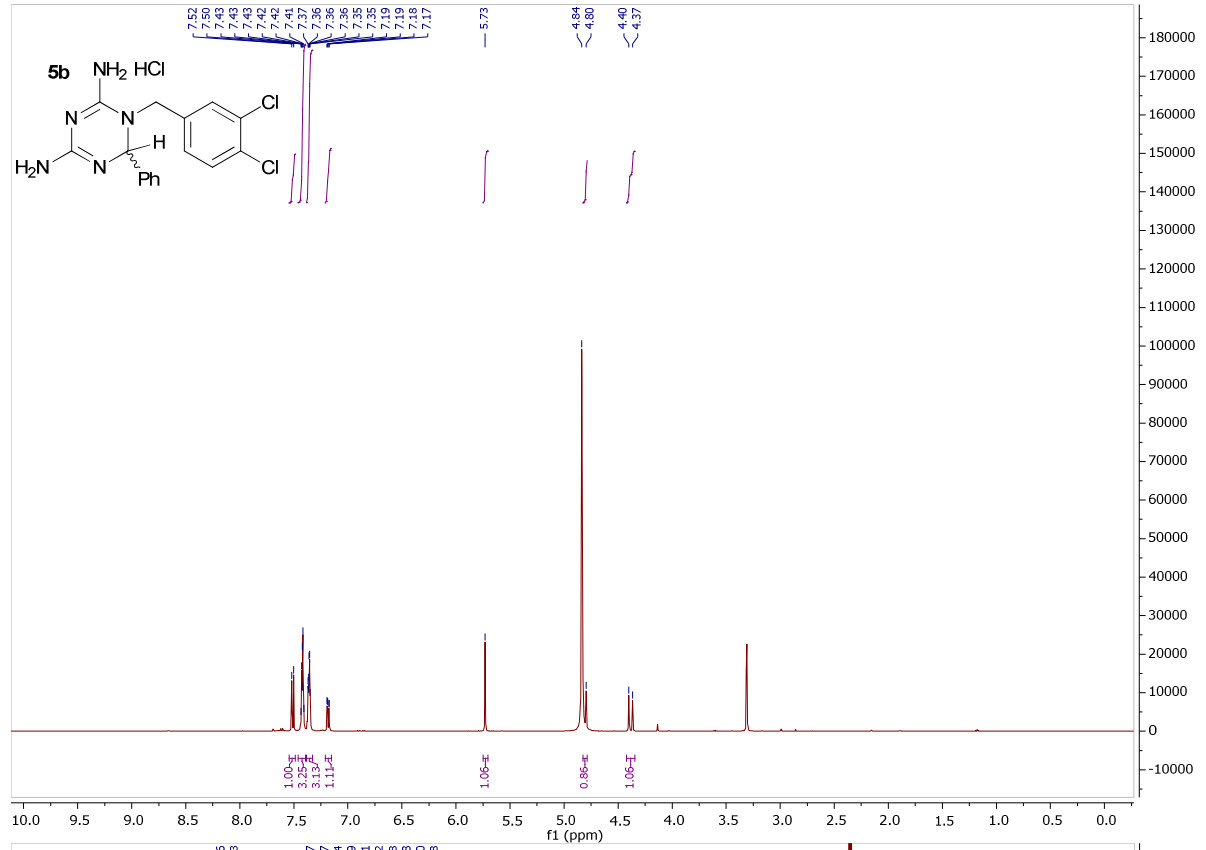


NMR spectra were run on either a Varian 200 MHz Gemini 2000 instrument, or on a 400 MHz Varian INOVA instrument. Chemical shifts (δ scale) are reported in parts per million (ppm) relative to the central peak of methanol, 49.00 ppm for ^{13}C and 3.31 ppm for ^1H ; chloroform, 77.16 ppm for ^{13}C and 7.26 ppm for ^1H . Spectra are reported in the following order: multiplicity, approximate coupling constant (J value) in hertz (Hz), number of protons or carbons; signals were characterized as s (singlet), d (doublet), dd (doublet of doublets), ddd (doublet of doublets of doublets), t (triplet), dt (doublet of triplets), q (quartet), p (pentet), br s (broad signal) and m (multiplet). High resolution mass spectra were generated on a Waters SYNAPT G1 HDMS mass spectrometer operated in electrospray mode. Leucine enkephalin (50 pg/ml) was used as reference calibrant to obtain typical mass accuracies between 1 and 3 mDa. The mass spectrometer was operated in positive mode with a capillary voltage of 2 kV, the sampling cone at 30 V and the extraction cone at 4 V. The source temperature was 120 C and the desolvation temperature was set at 350 °C. Nitrogen gas was used as the nebulisation gas at a flow rate of 450 L/h. Purity of final compounds was determined by UPLC, using a Waters Acquity UPLC coupled in tandem to an UPDA detector (200-500 nm). All chemicals for UPLC-MS work were of ultra-pure LC MS grade and purchased from Fluka (Steinheim, Germany) while ultra-grade solvents were purchased from Honeywell (Burdick & Jackson, Muskegon, USA). The analytical column used was a Waters Acquity HSS C18, 150 x 2.1 mm (1.7 mm) equilibrated at 45 °C in a column heater. The mobile phase consisted of acetonitrile and ultra-pure water containing 0.1% formic acid (v/v). A linear gradient was used to ramp the mobile phase composition from 95% water to 10% water in 6 min. The runtime was 10 min per sample. The software used to control the hyphenated system and do all data manipulation was MassLynx 4.1 (SCN 704).

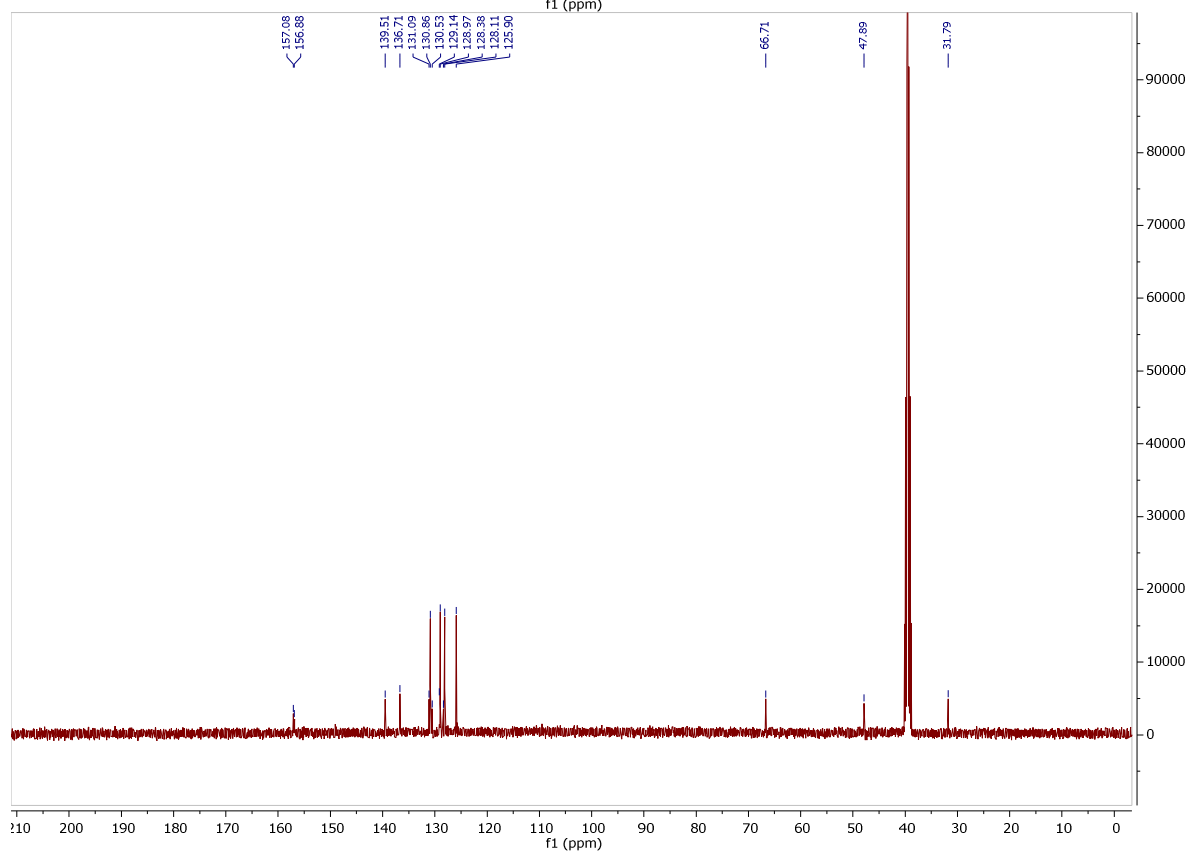
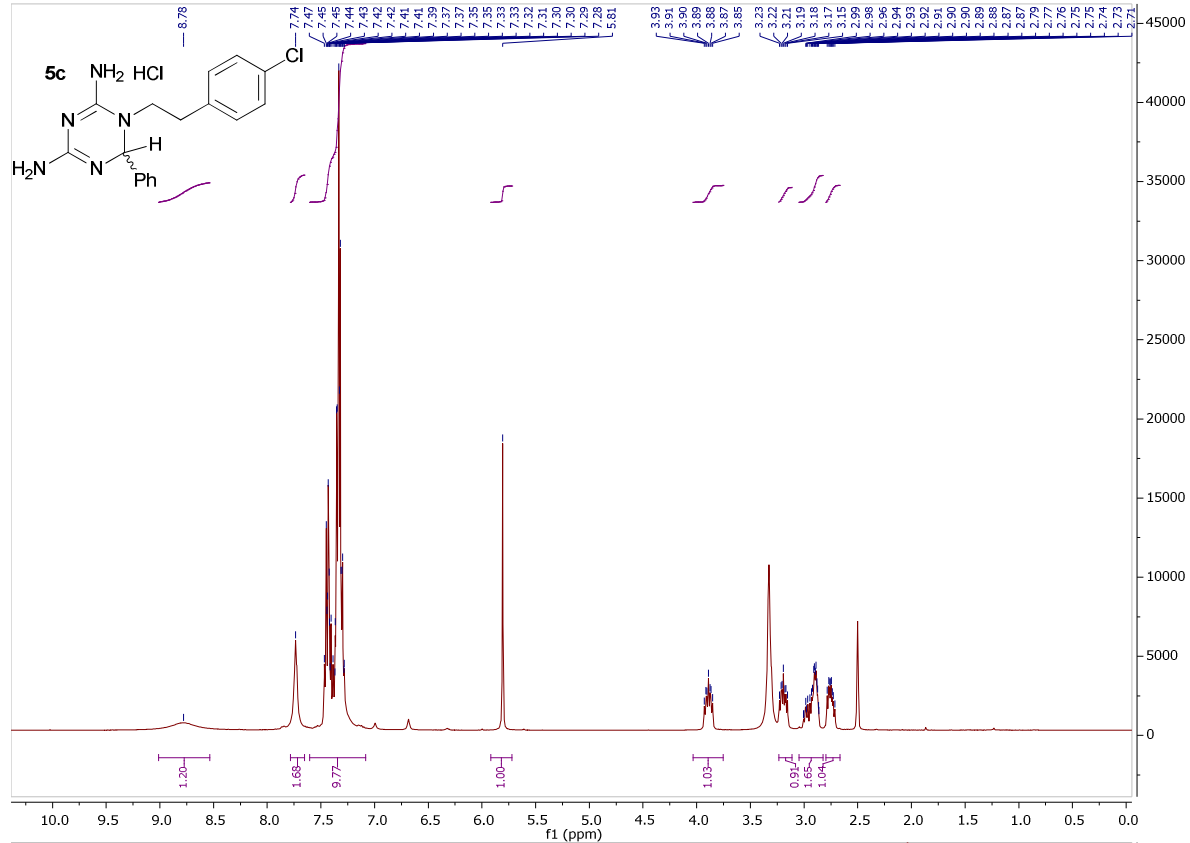
5a



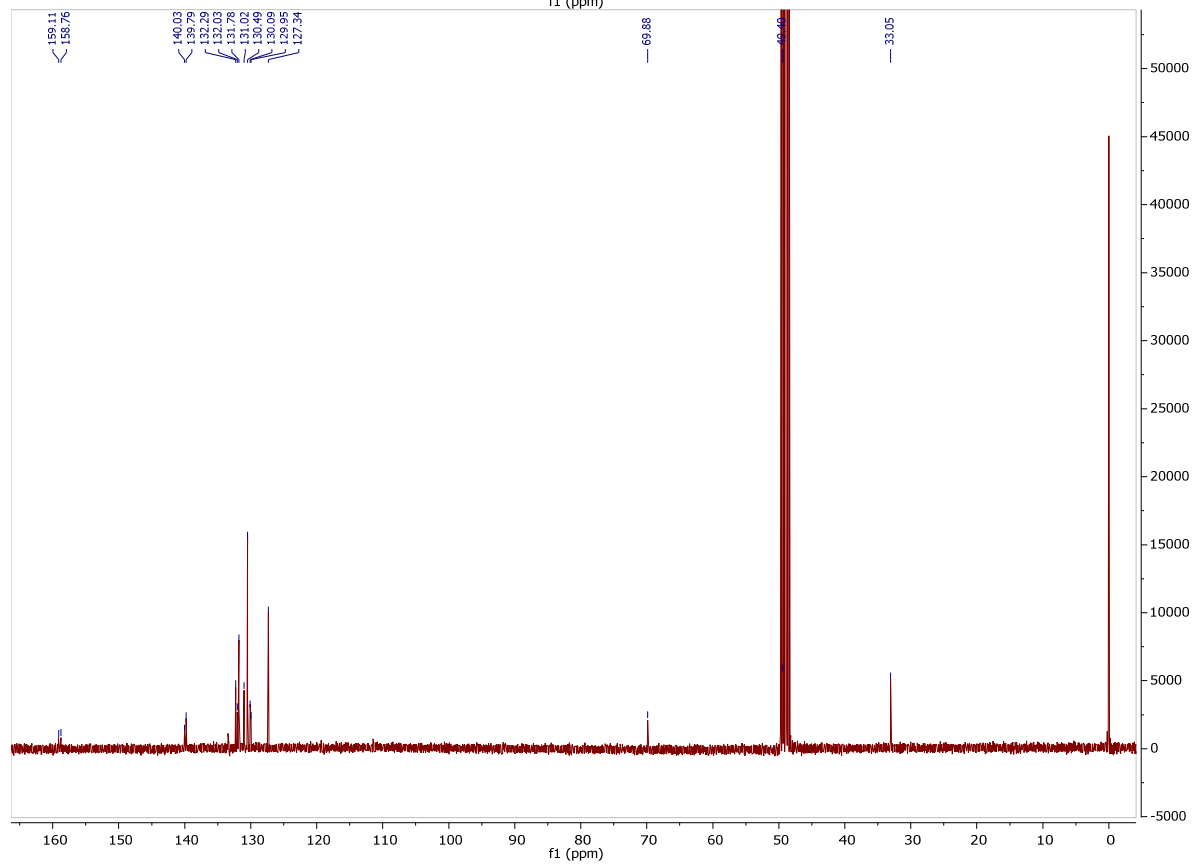
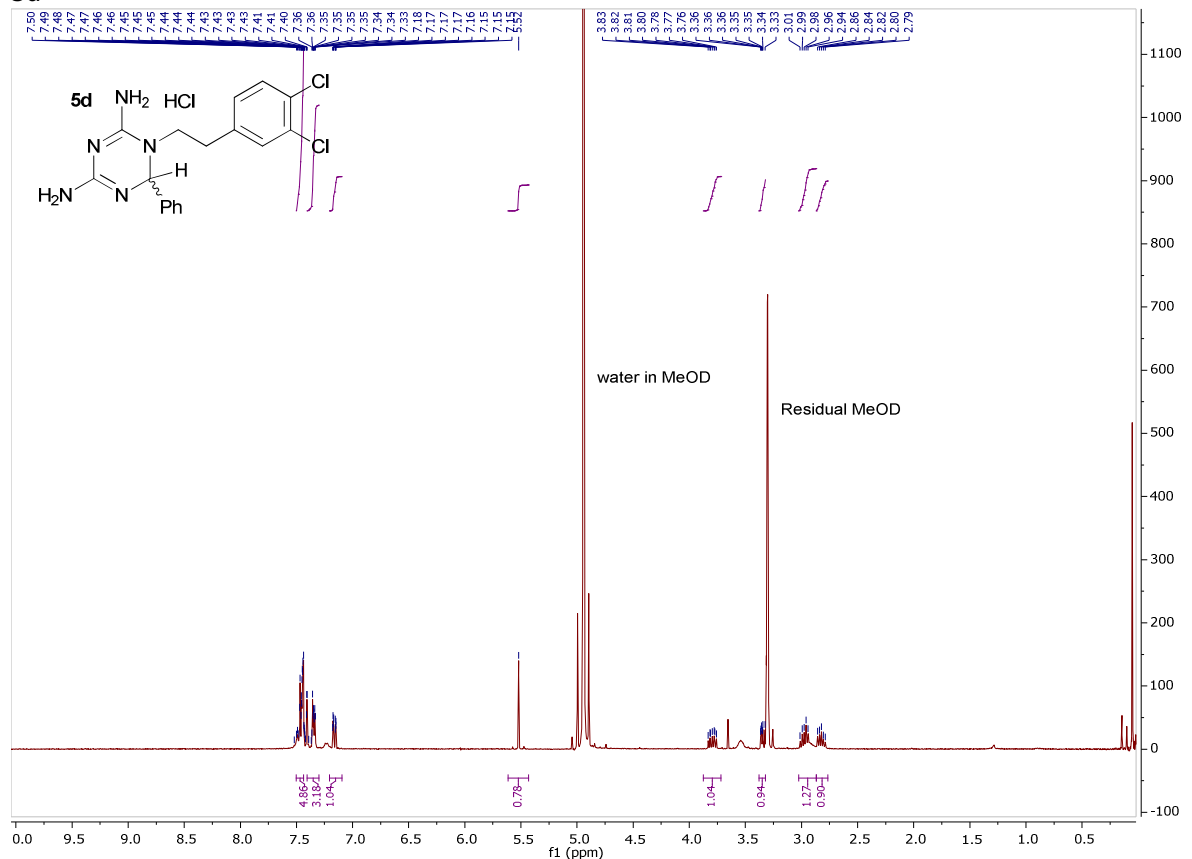
5b

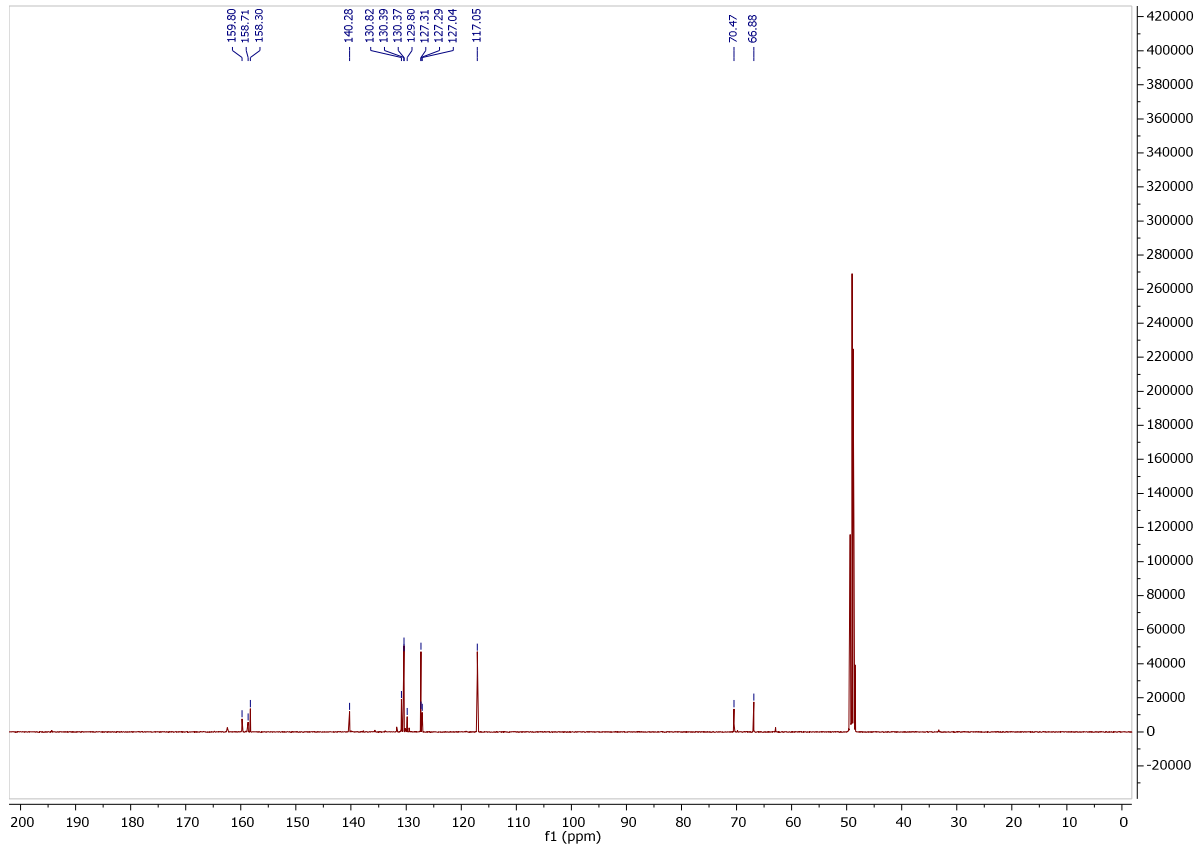
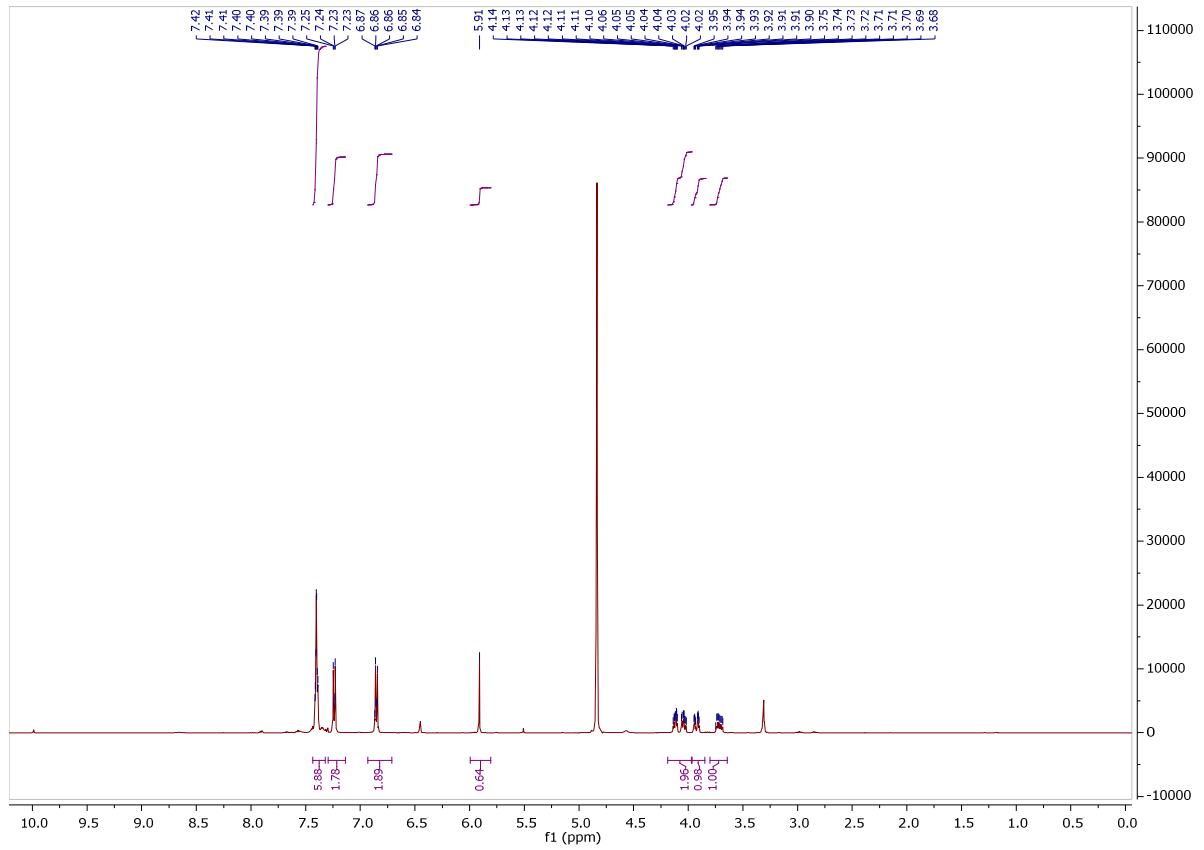
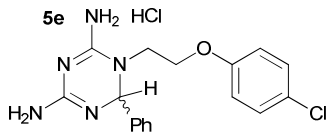


5c

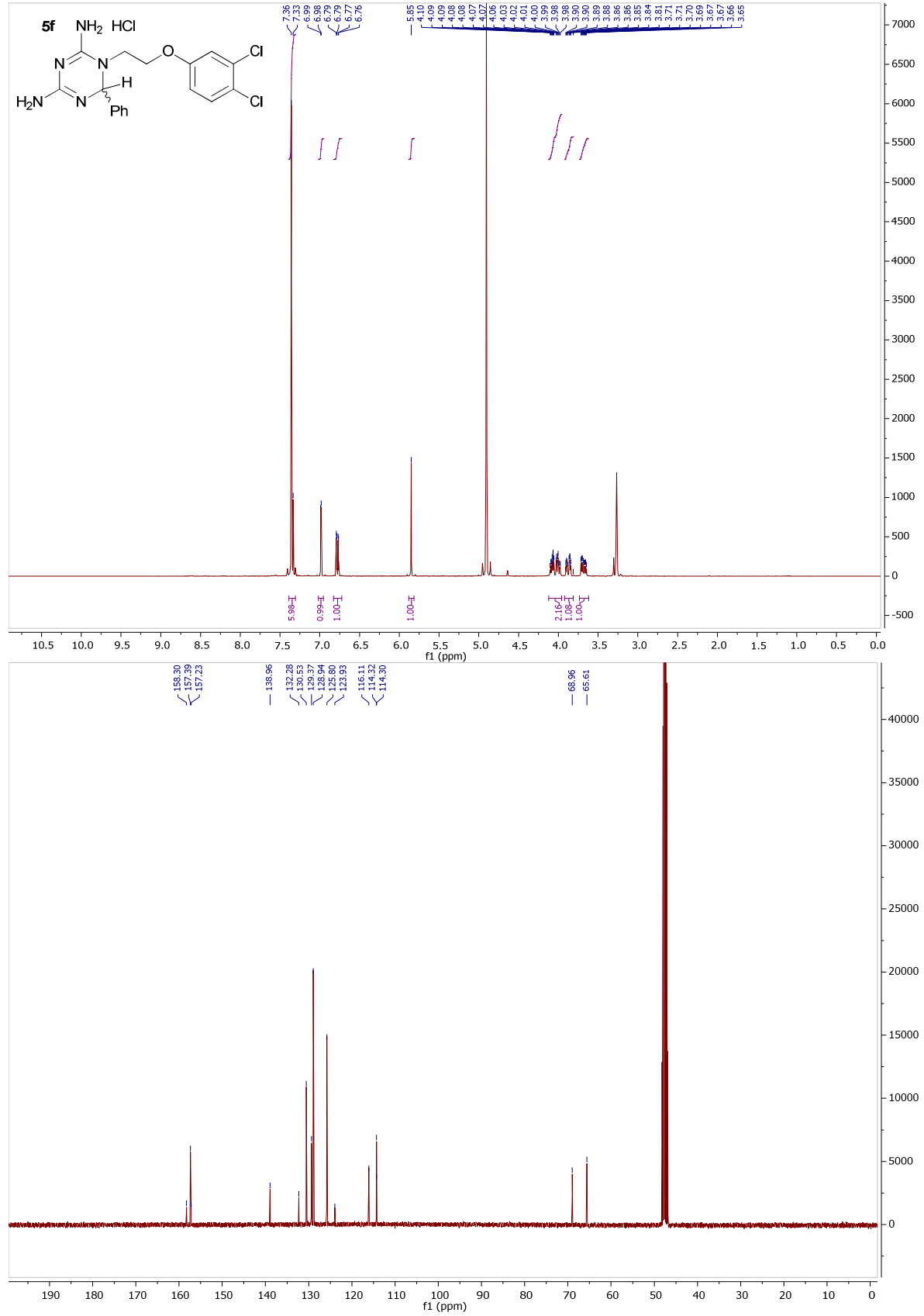


5d

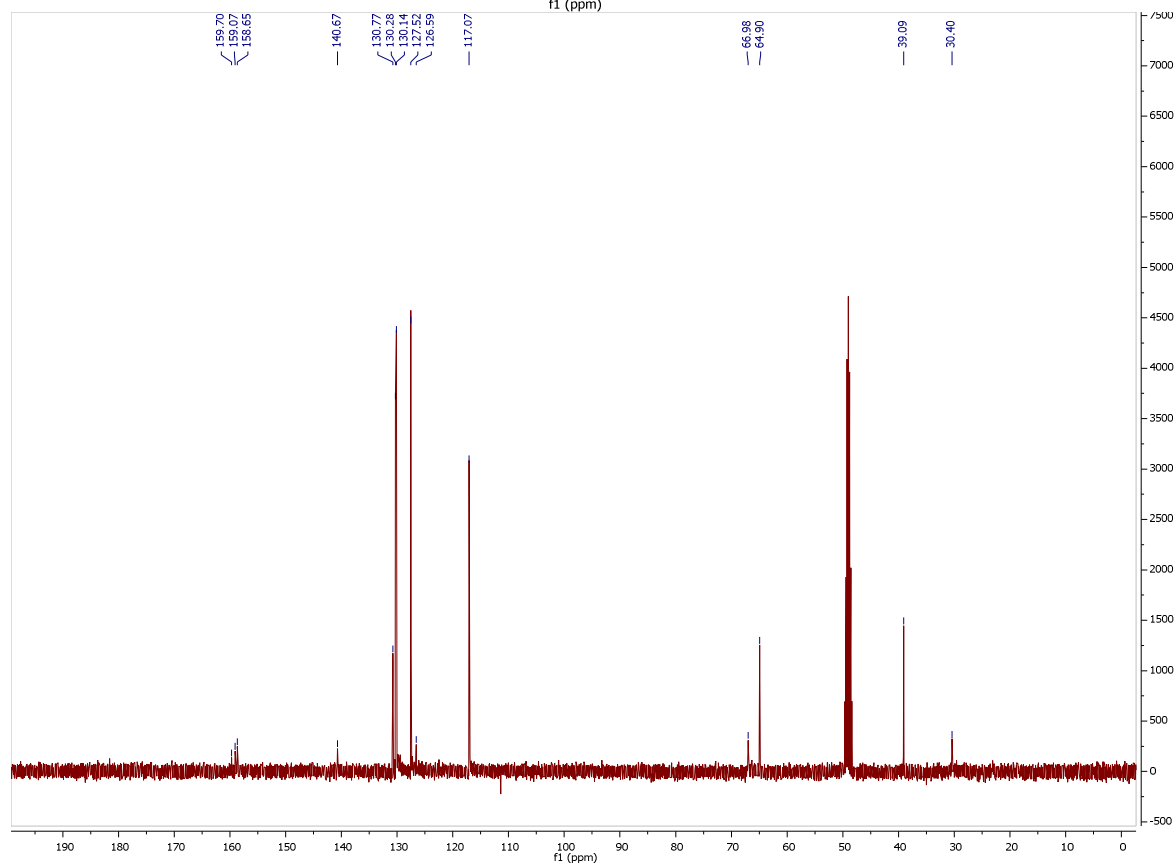
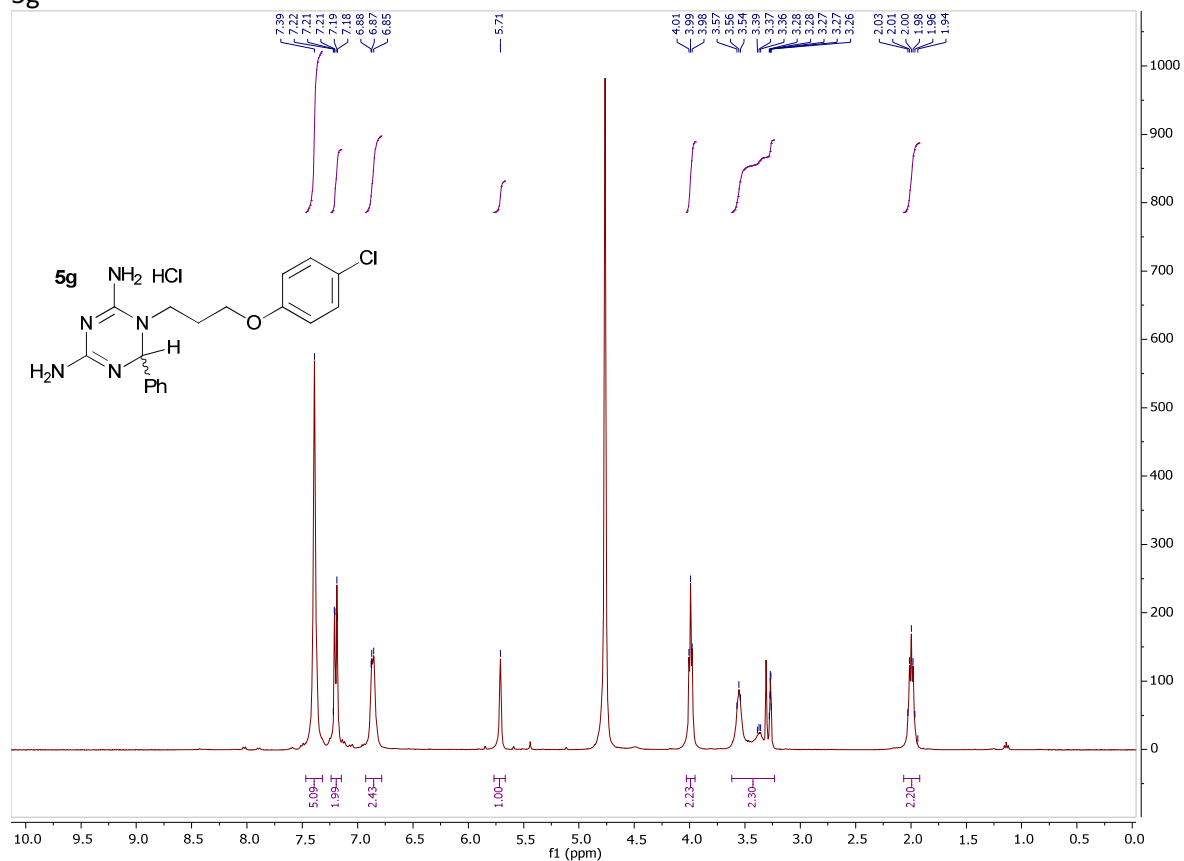




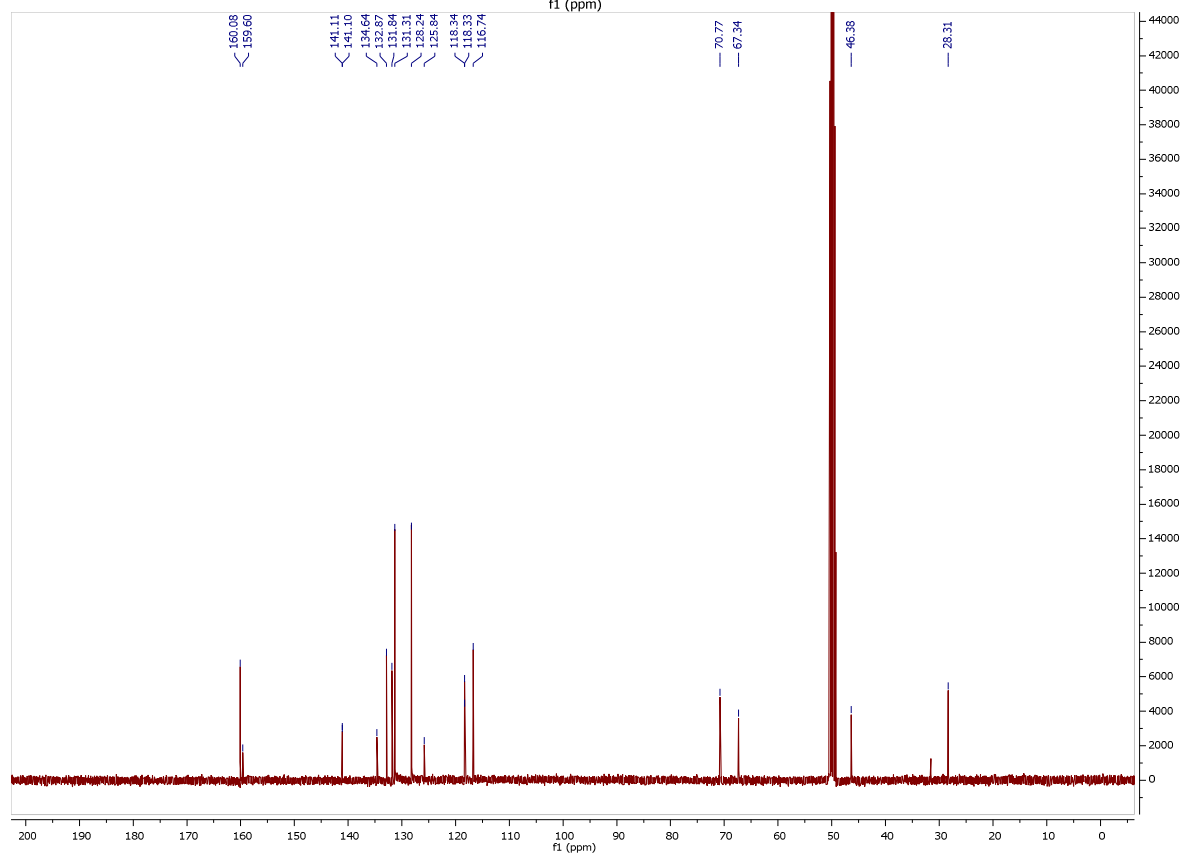
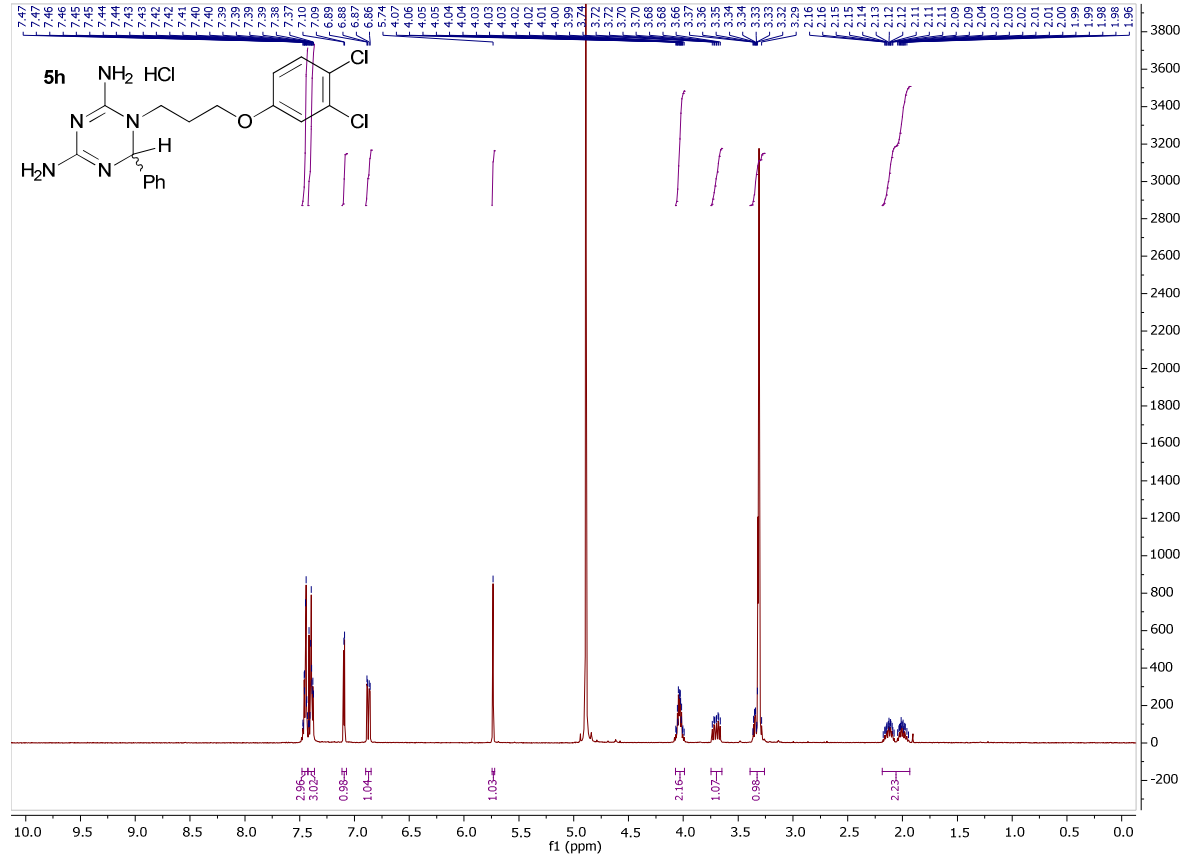
5f



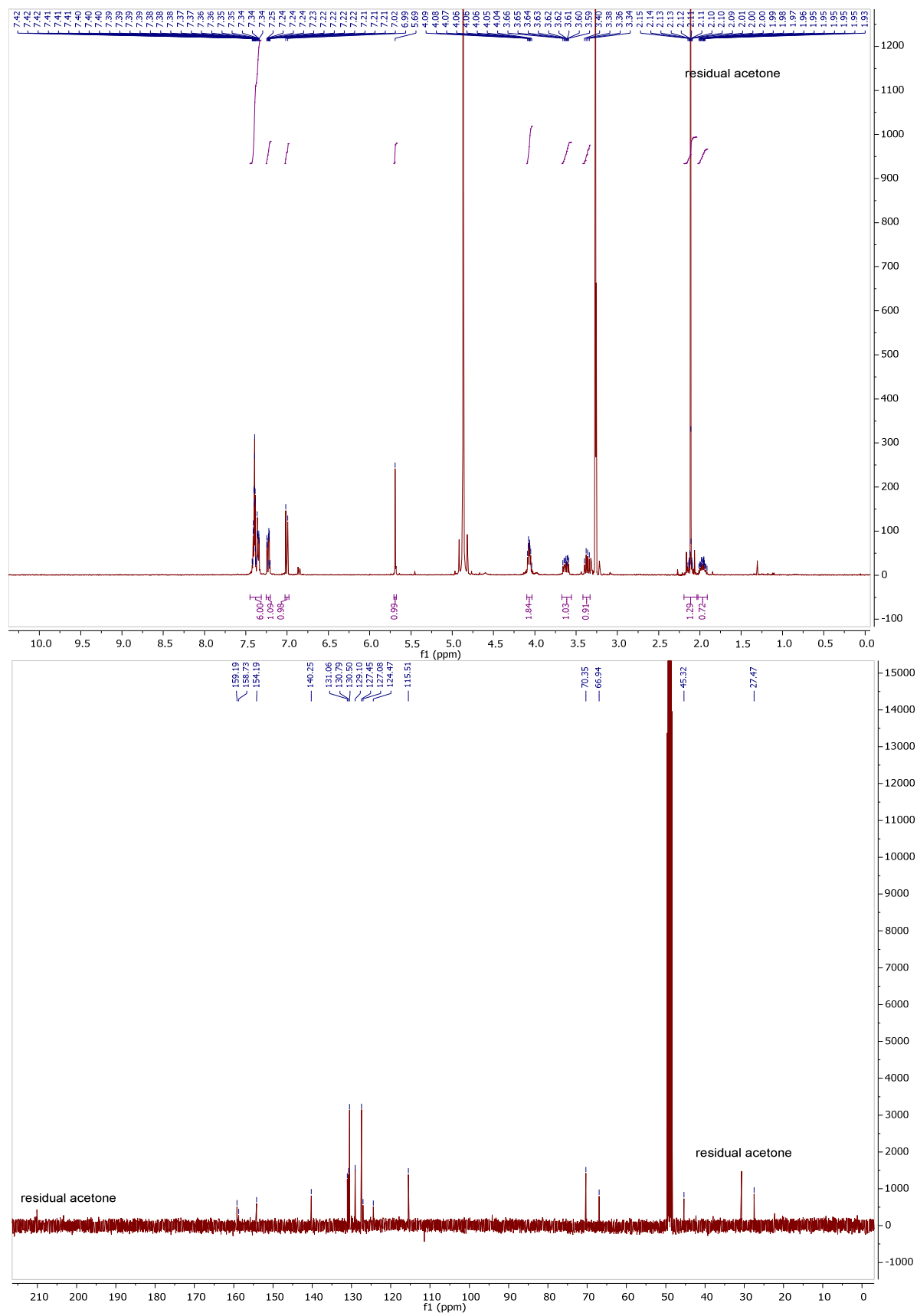
5g



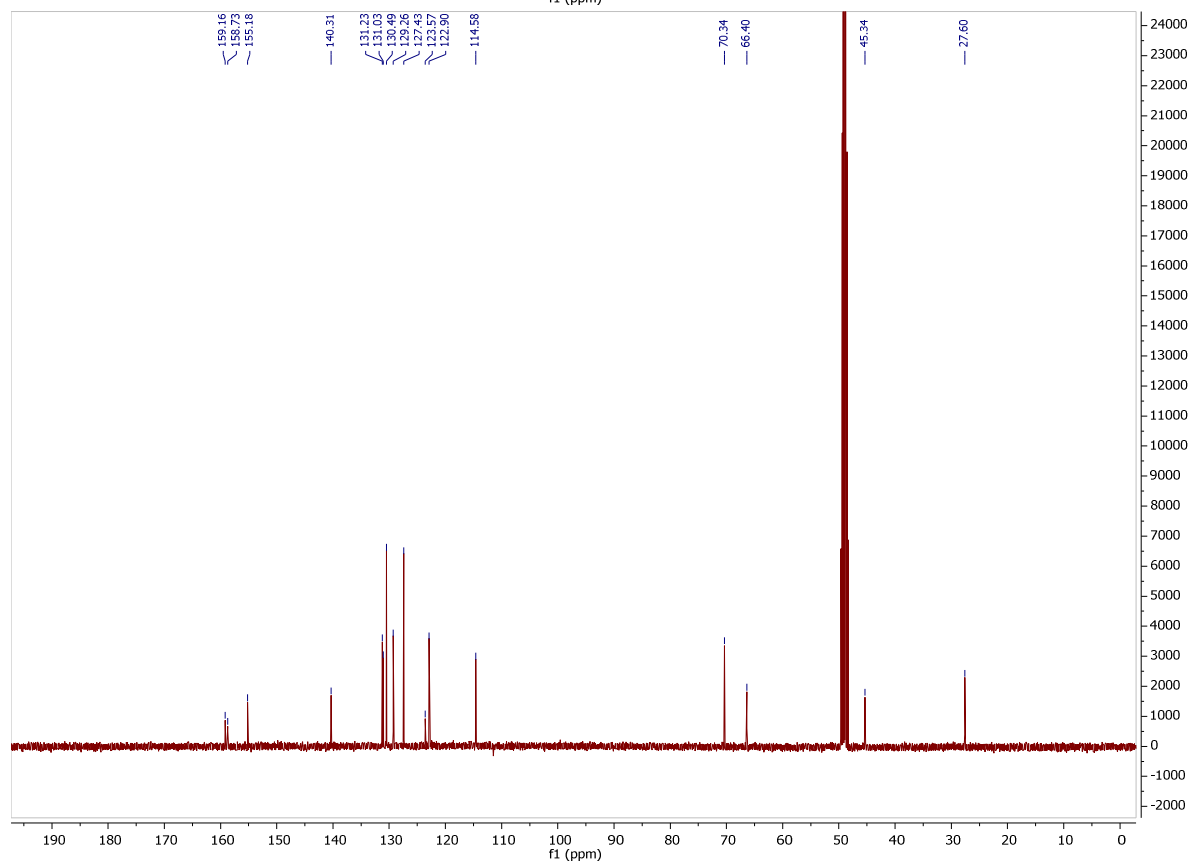
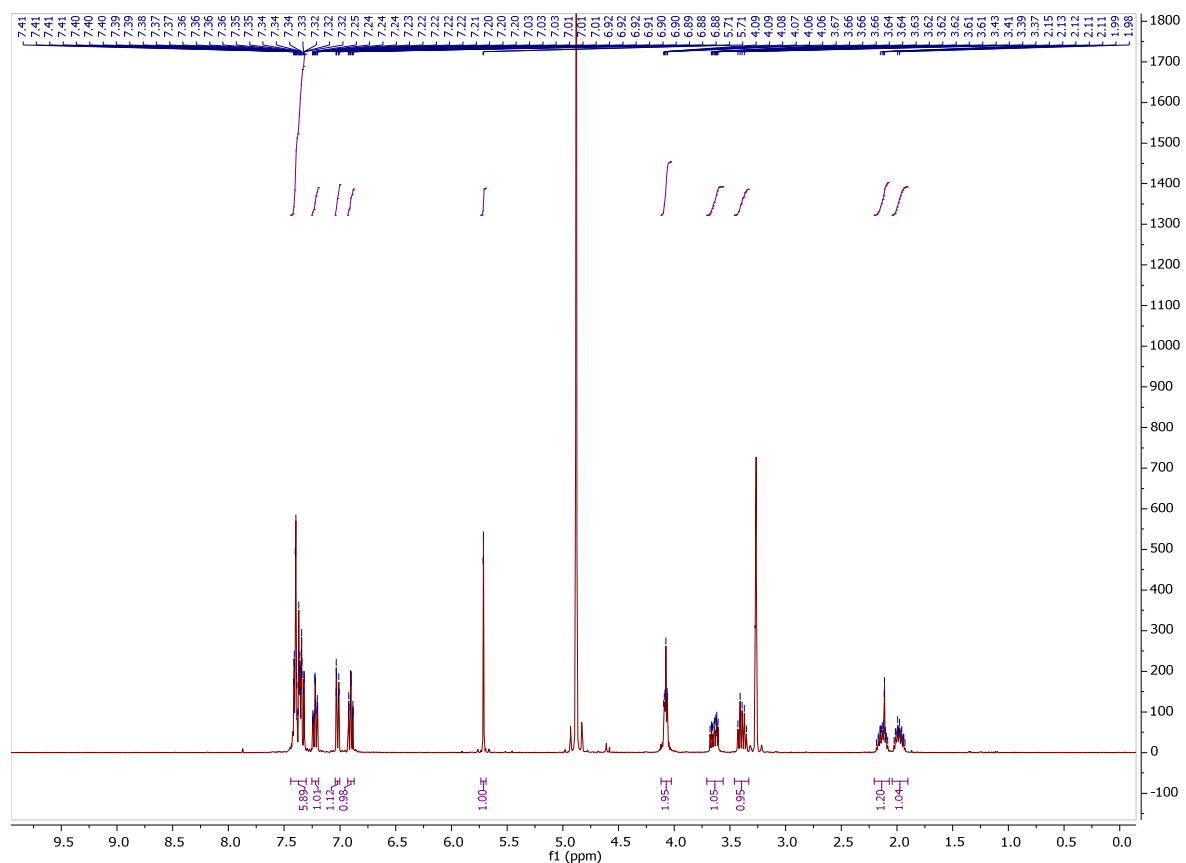
5h



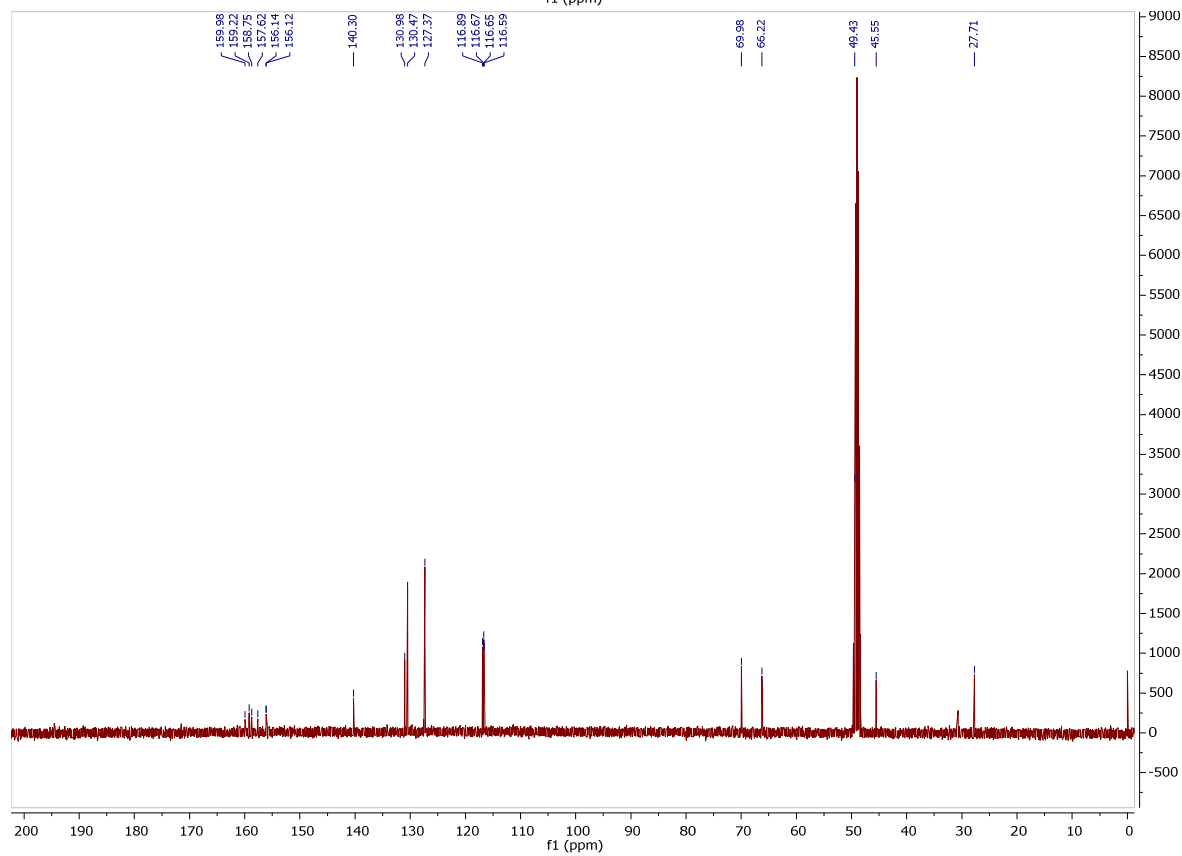
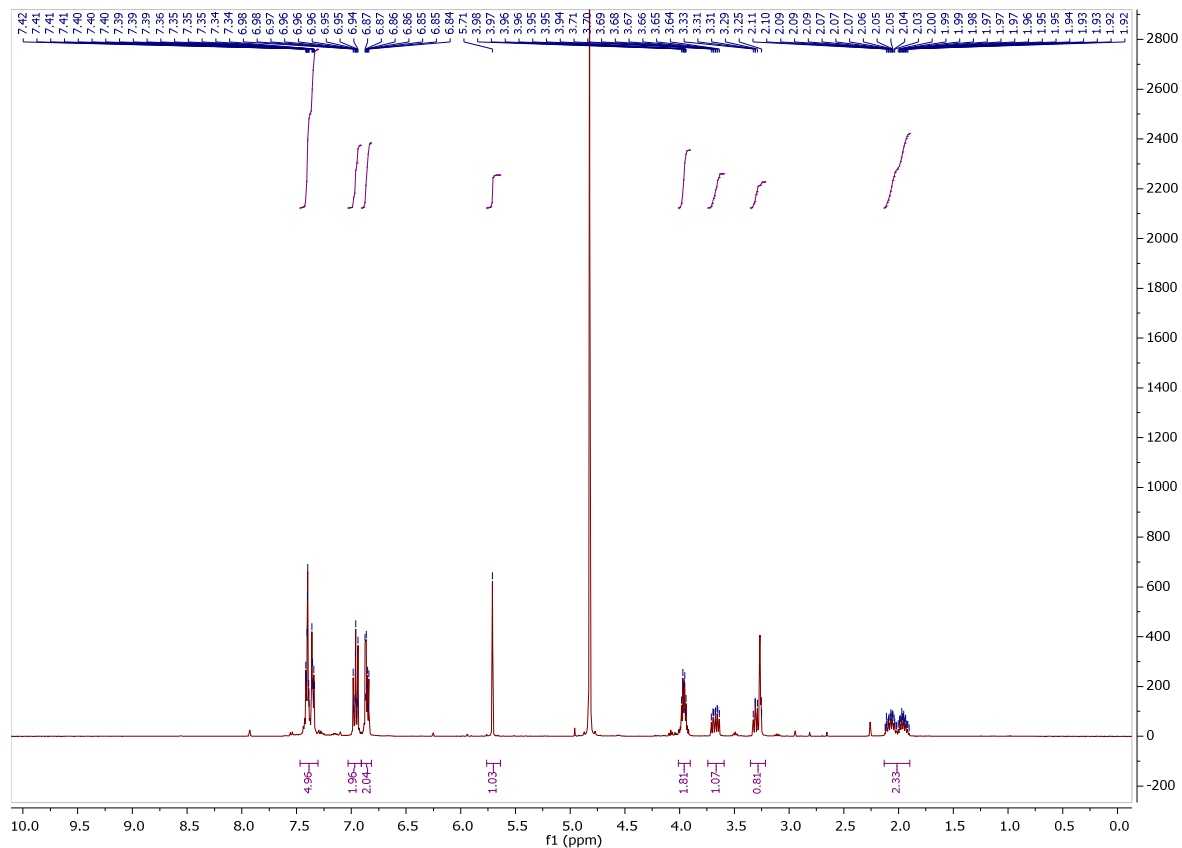
10a



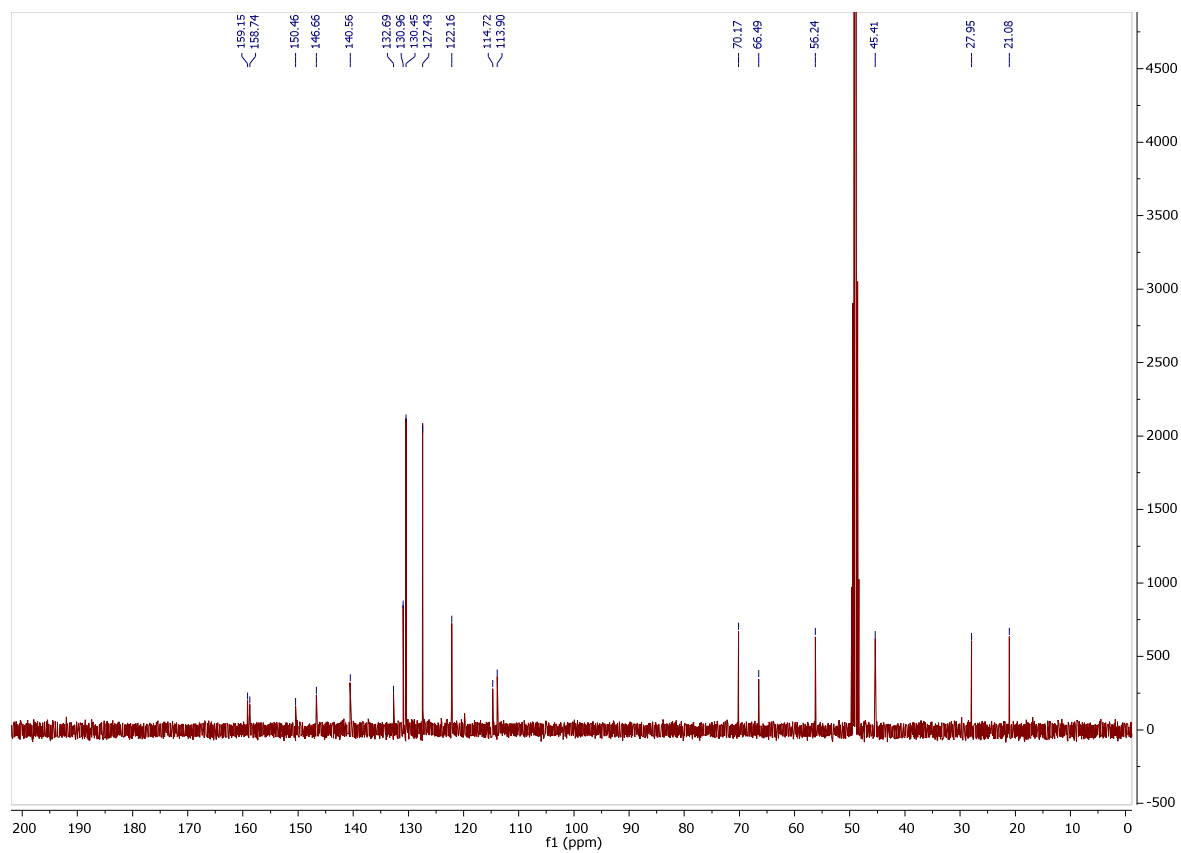
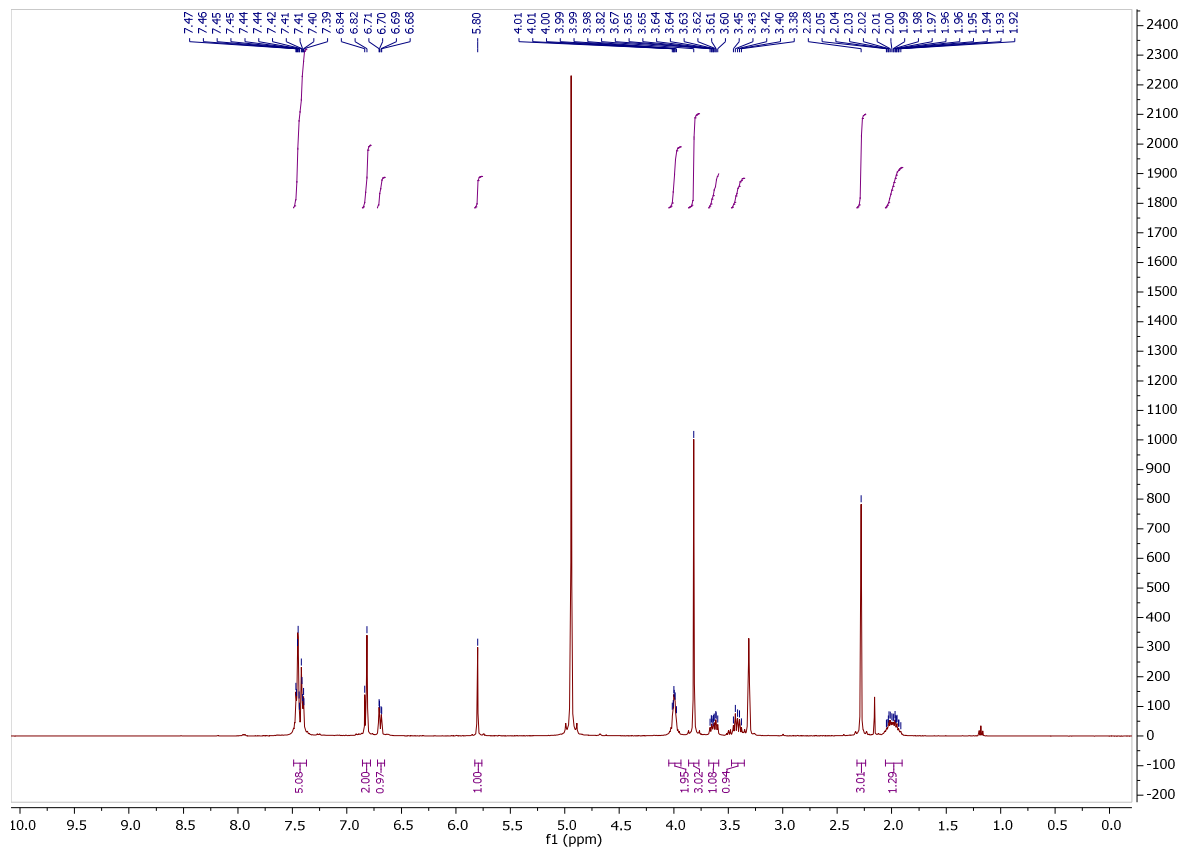
10c



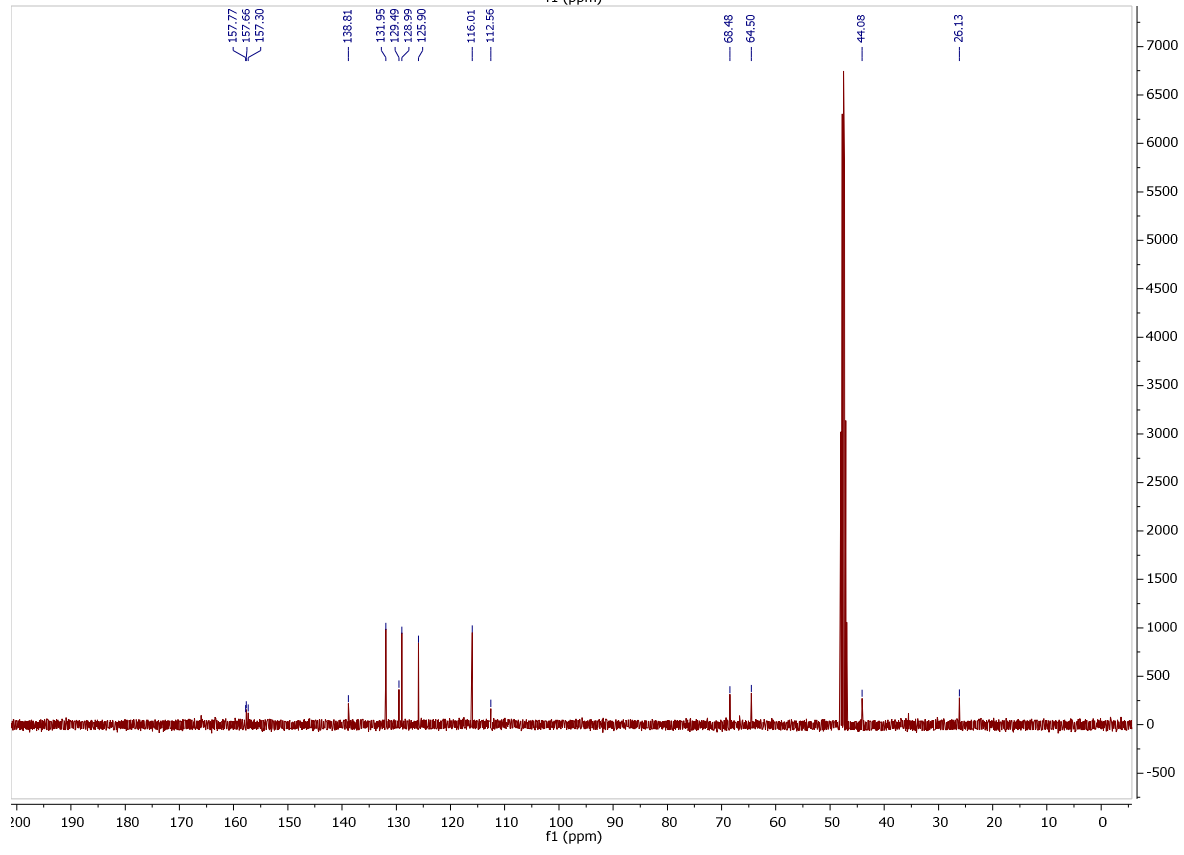
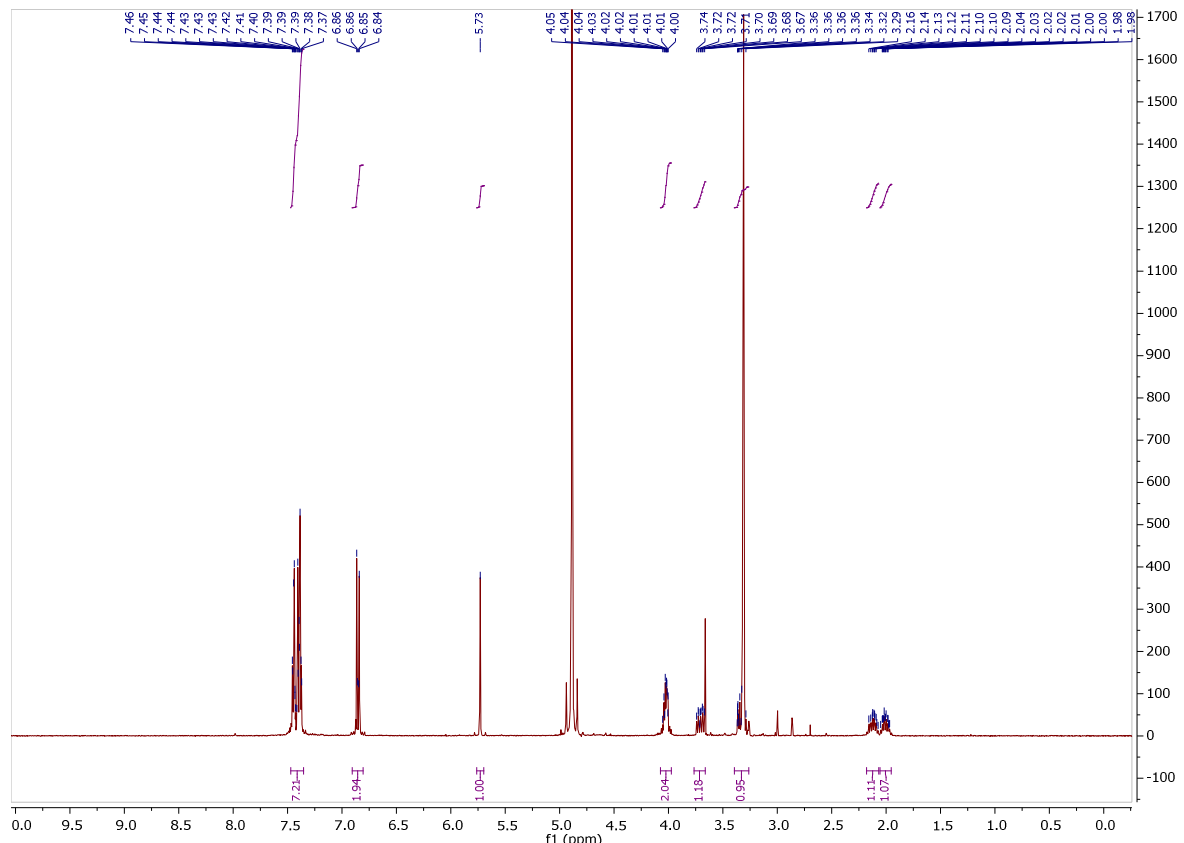
10d



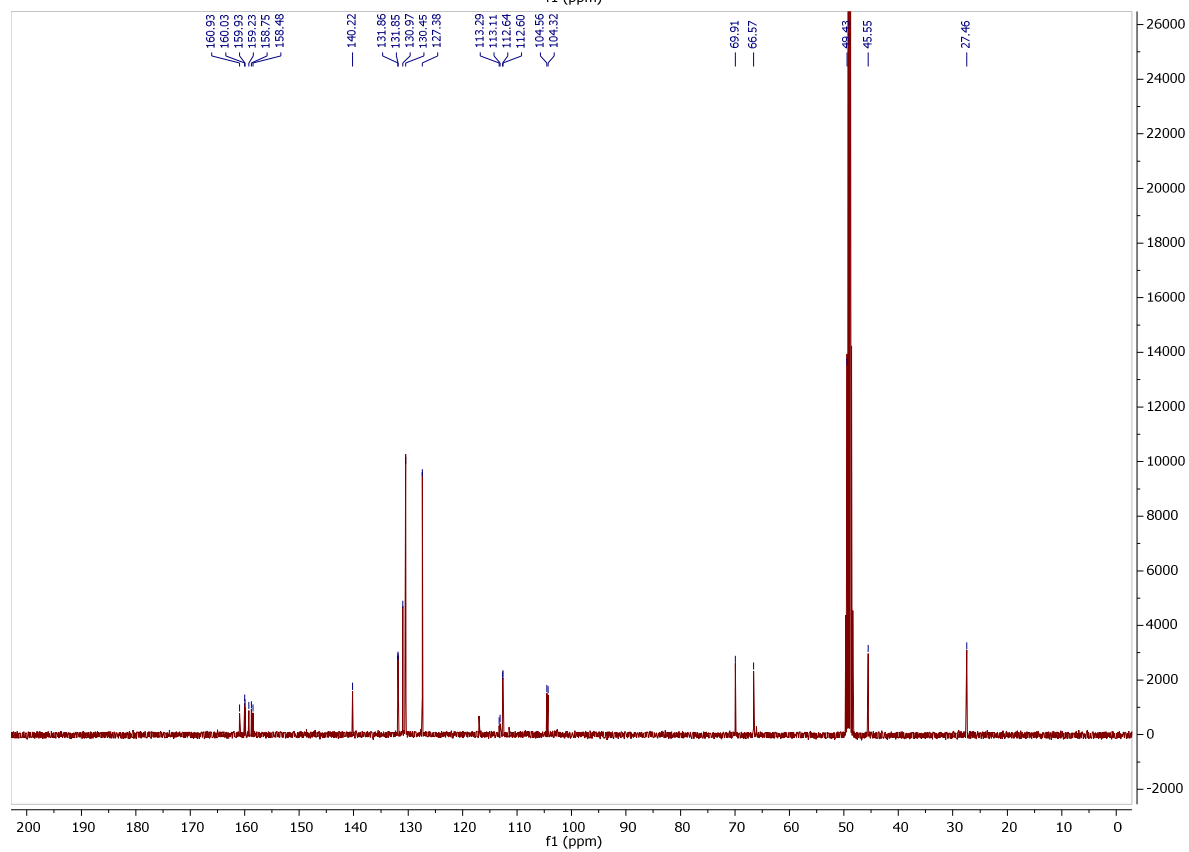
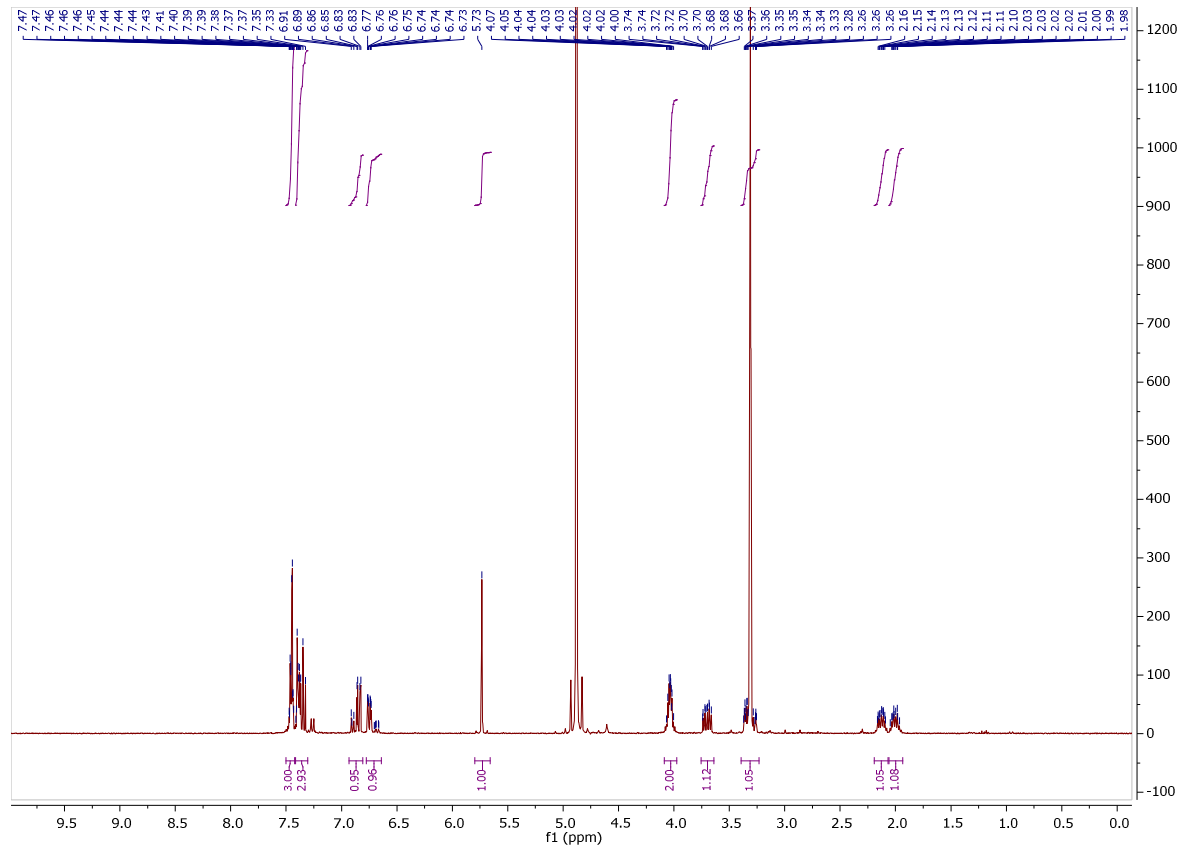
10e



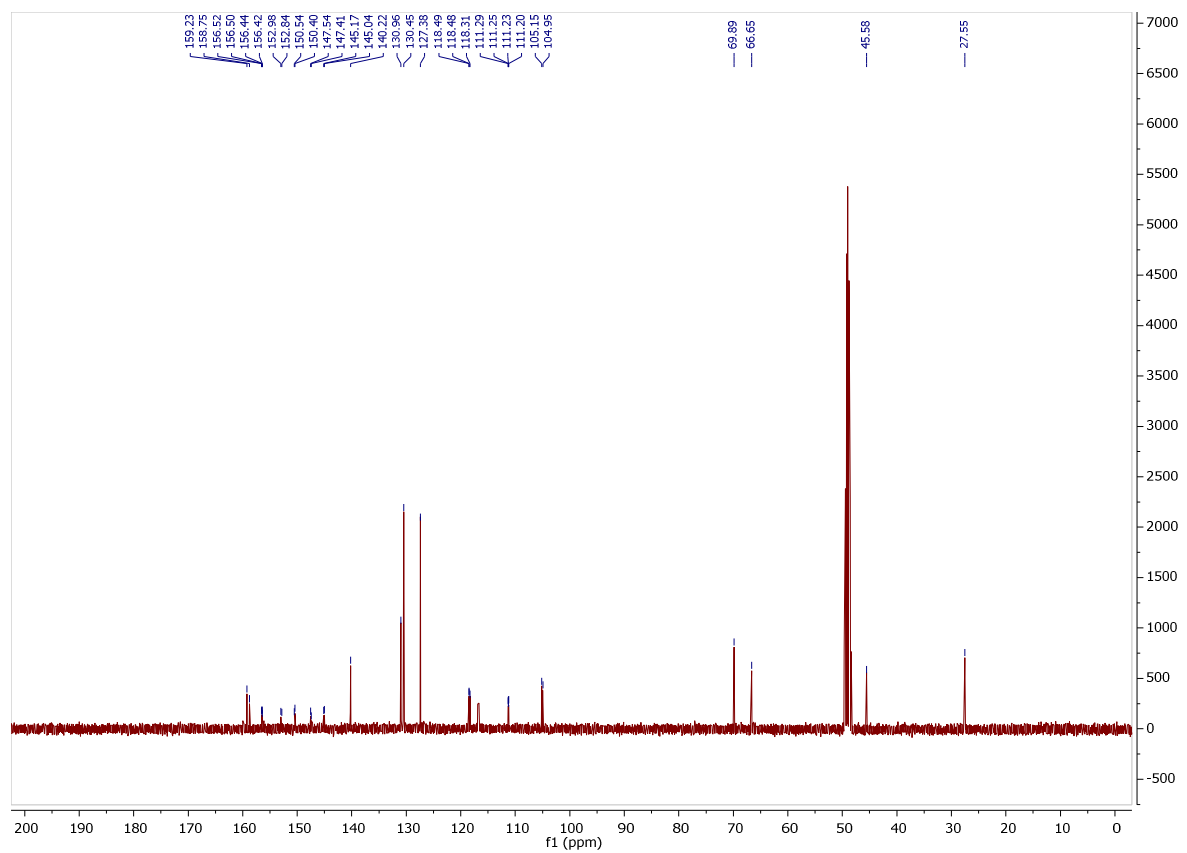
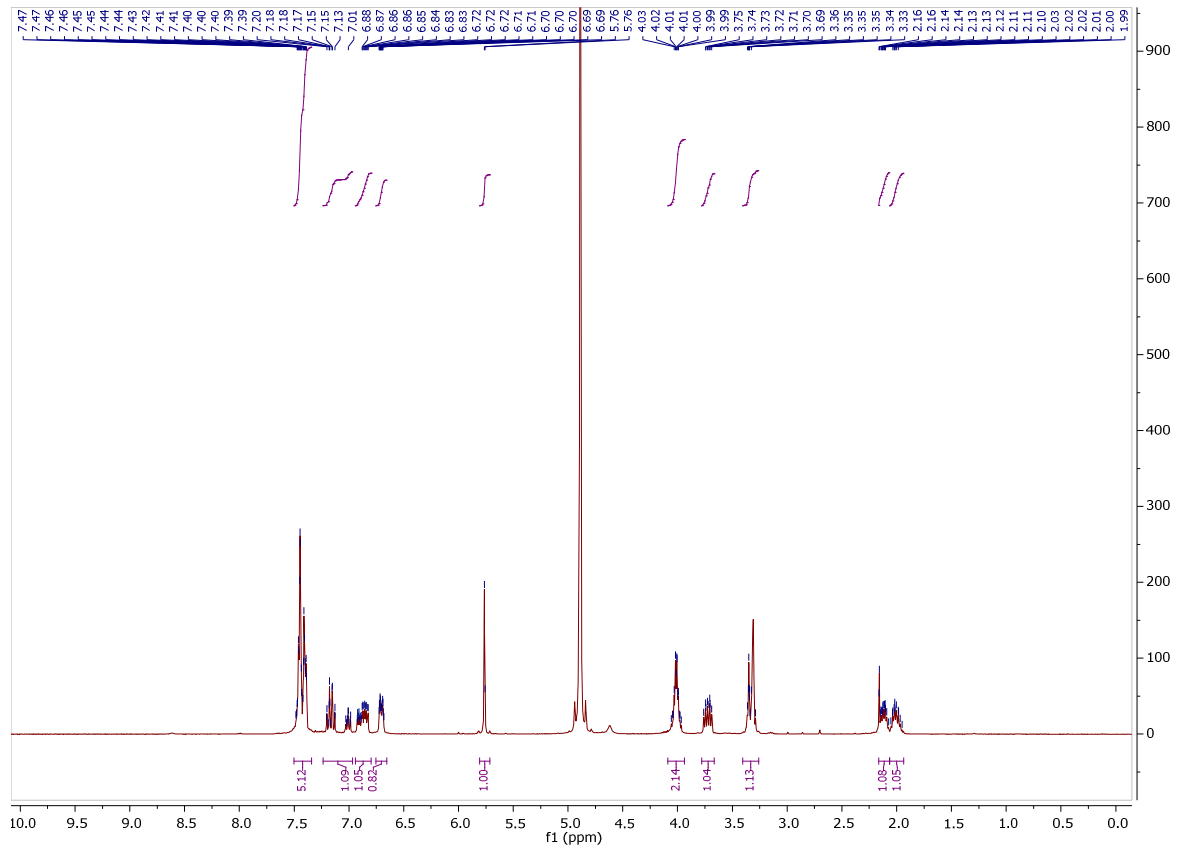
10f



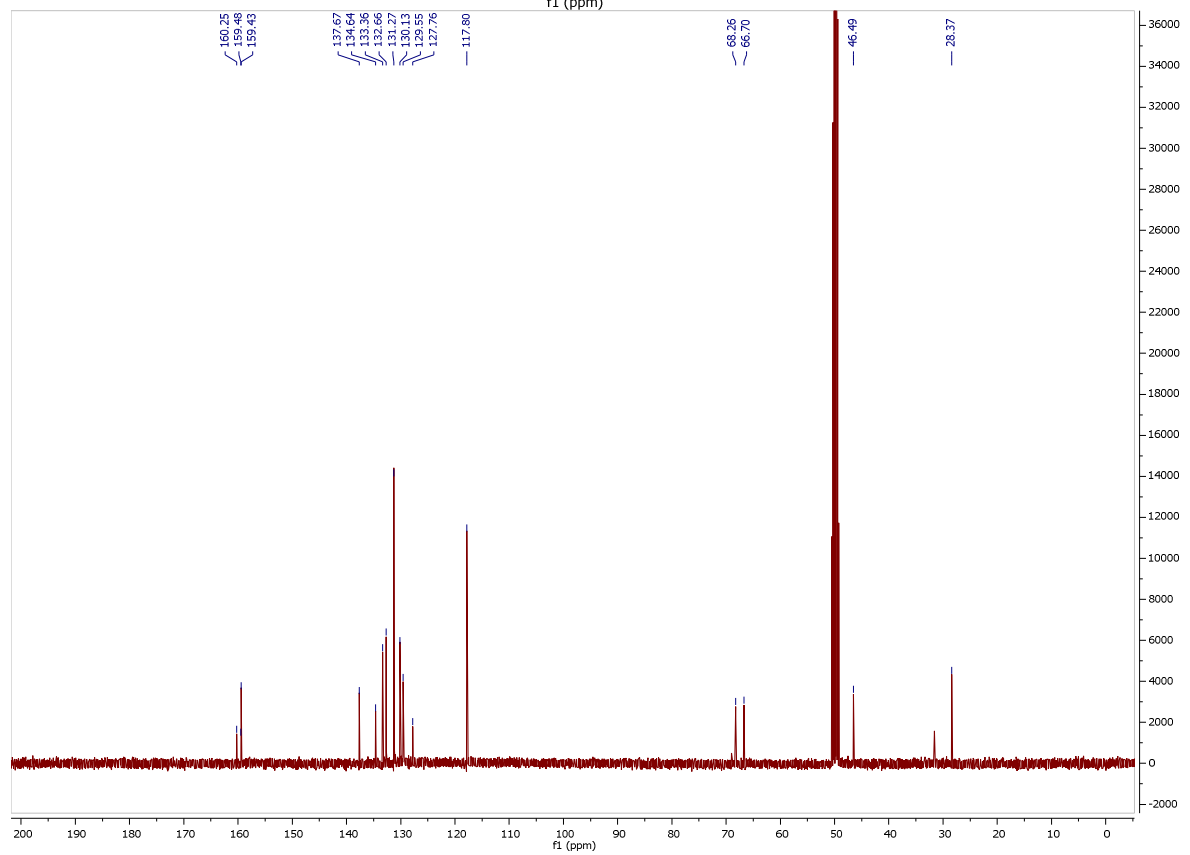
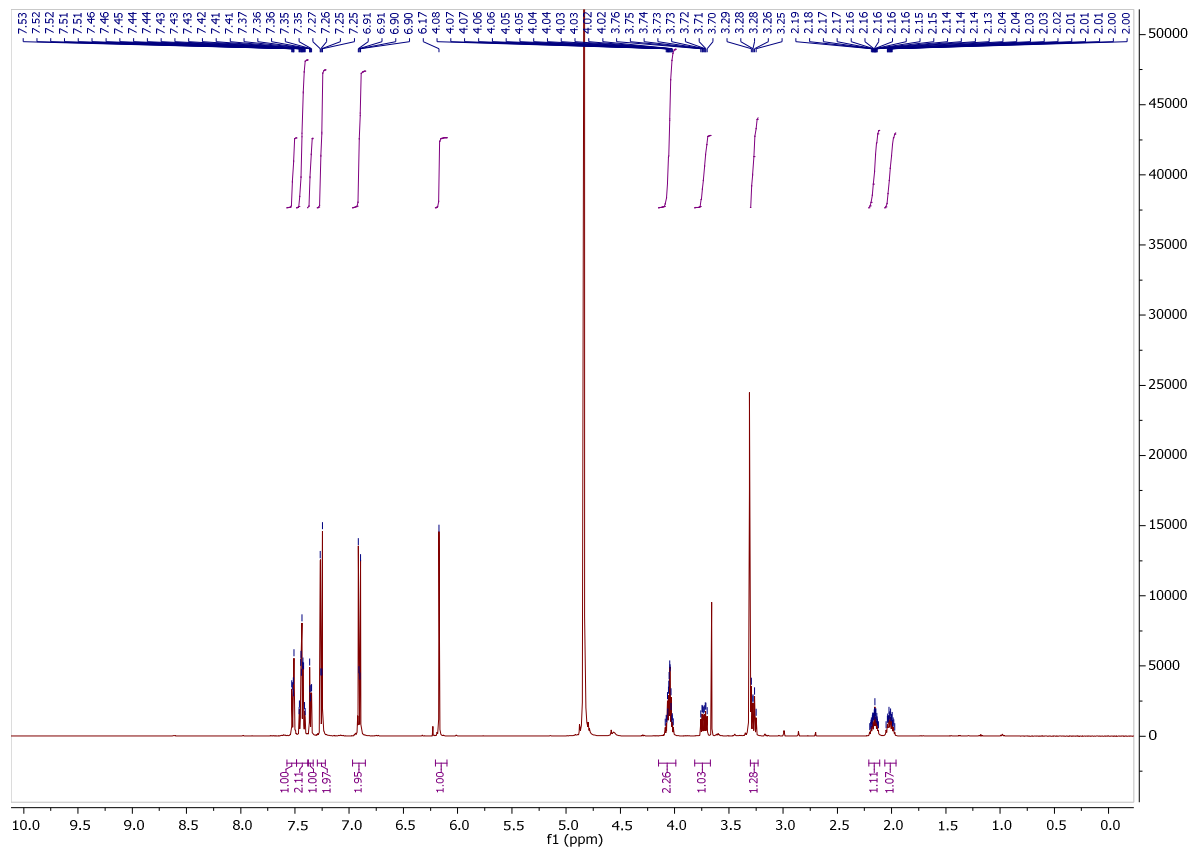
10g



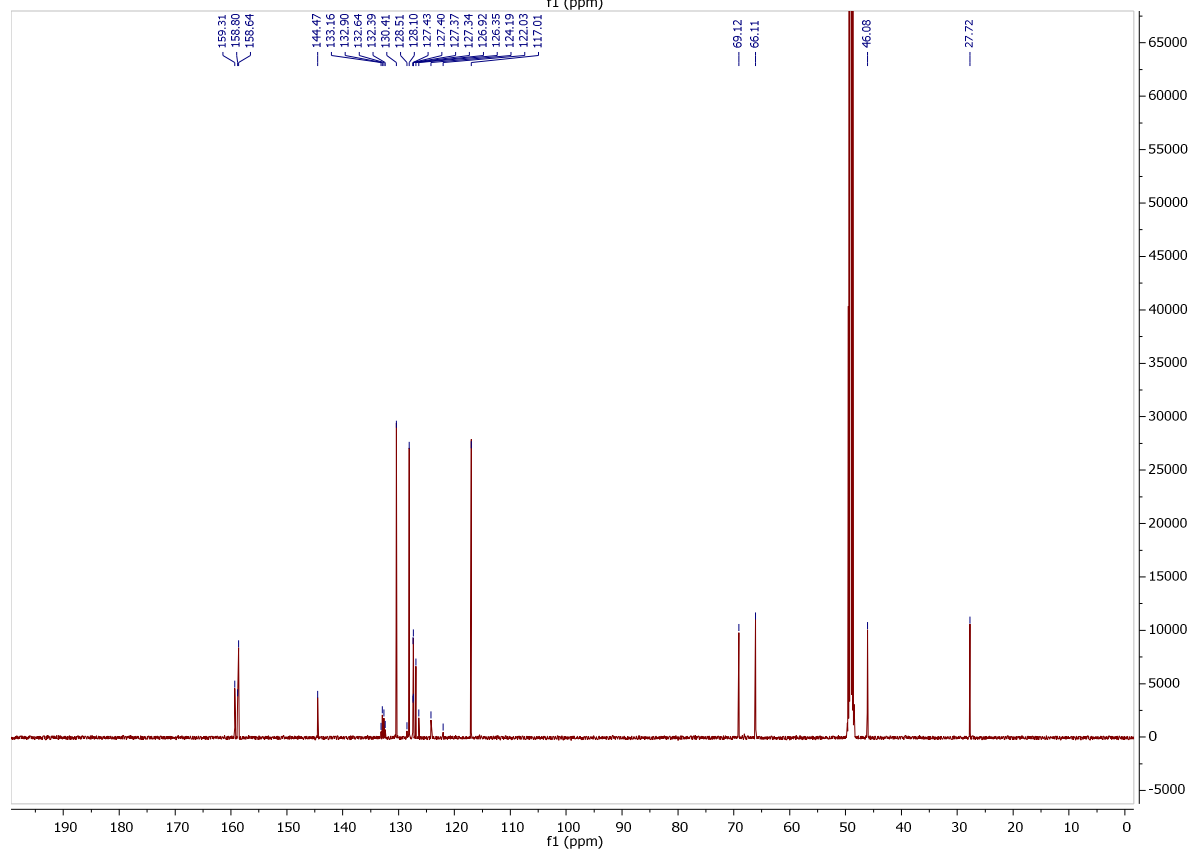
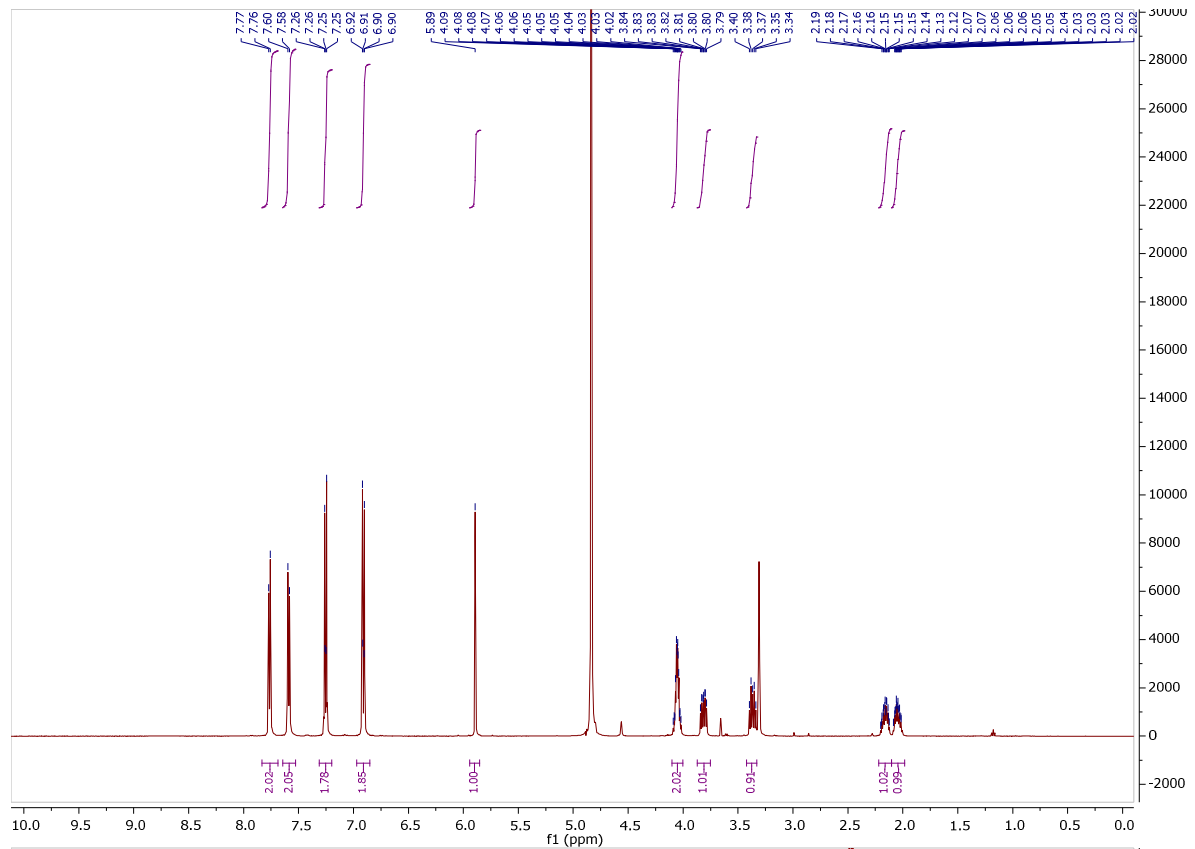
10h



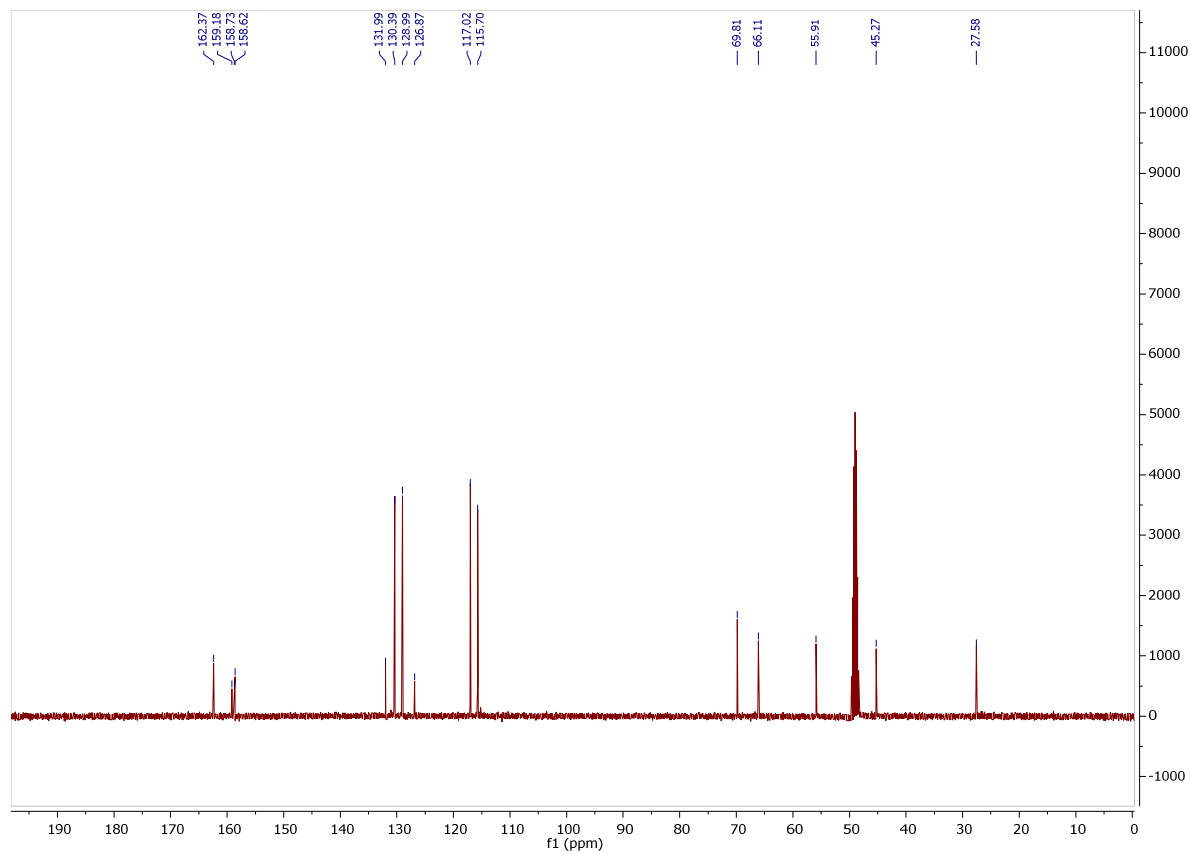
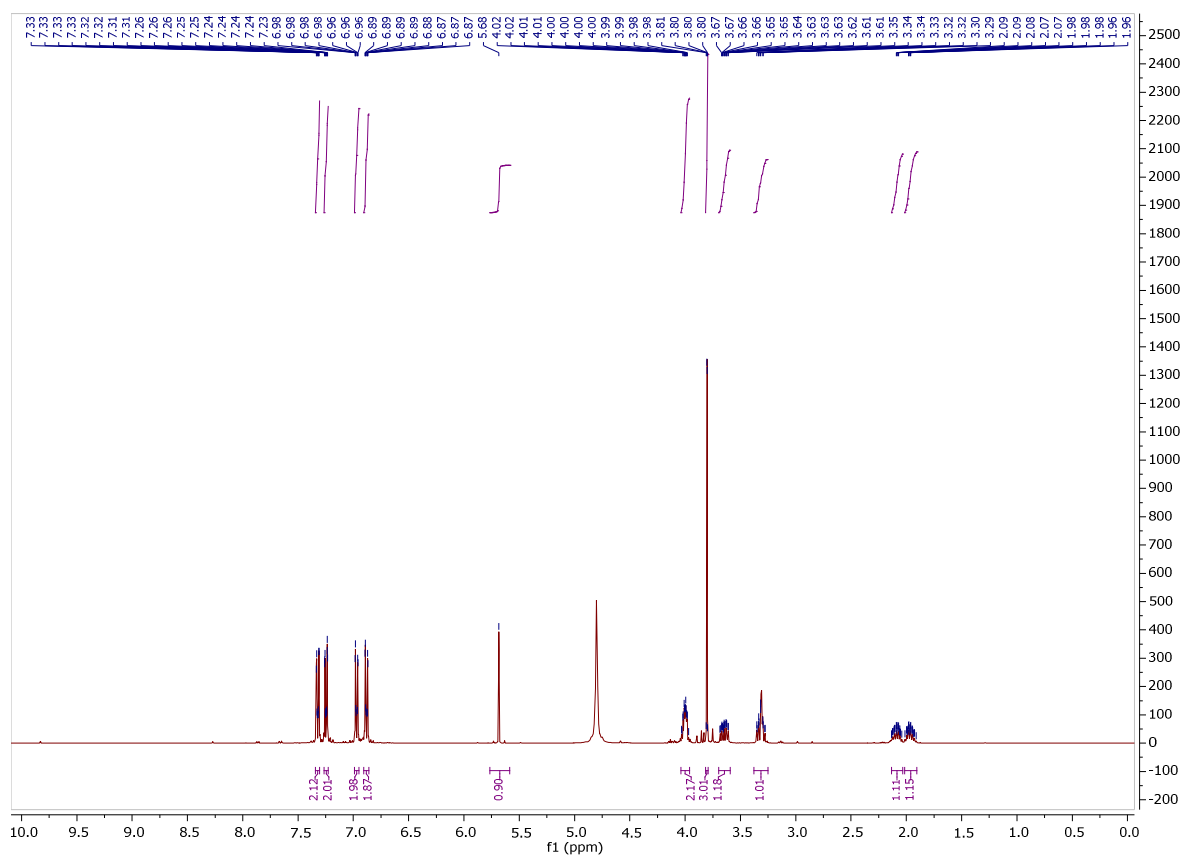
11a



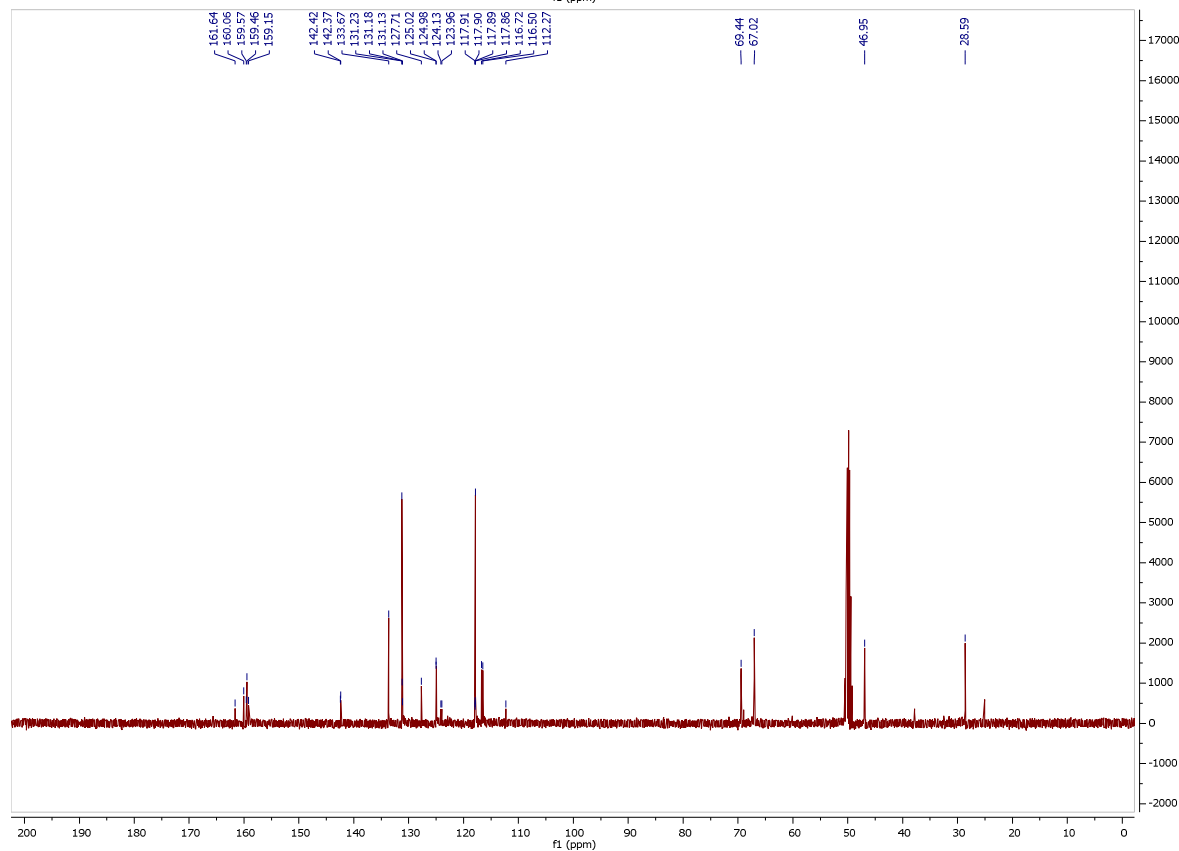
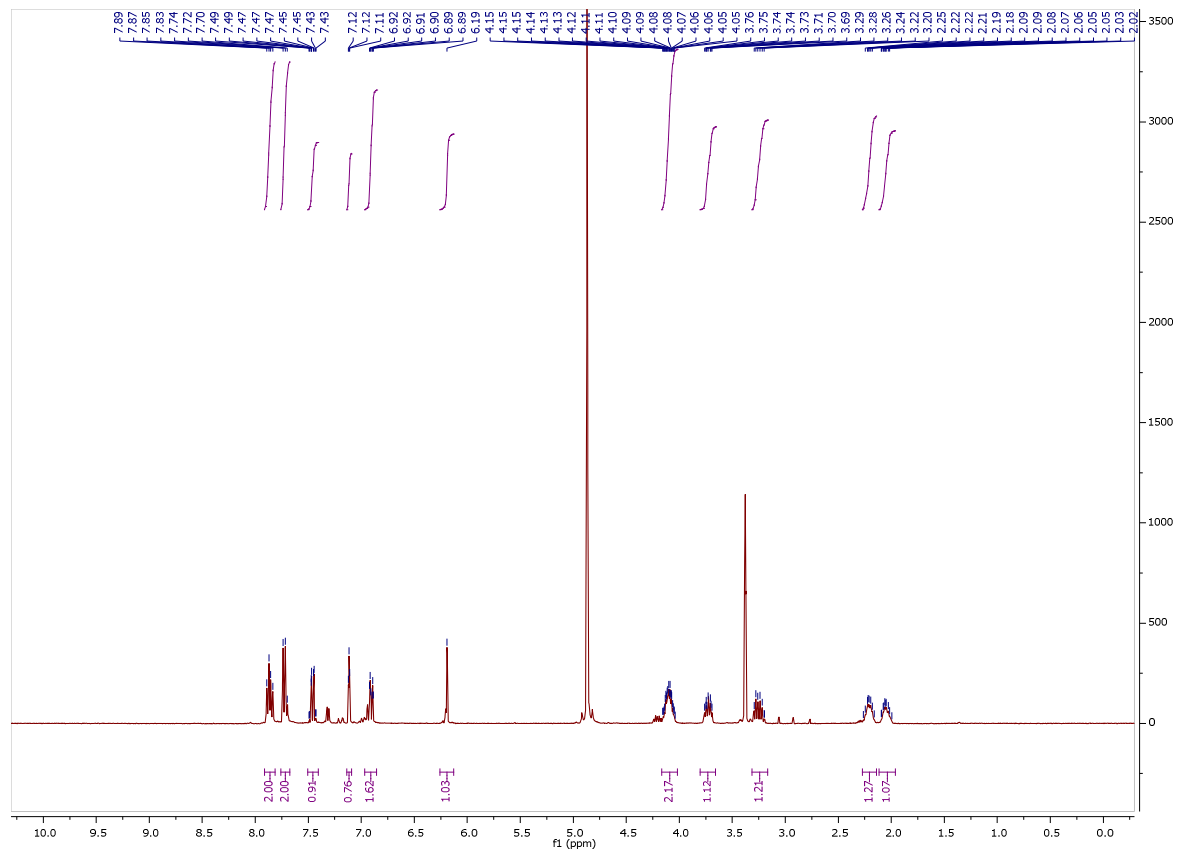
11b



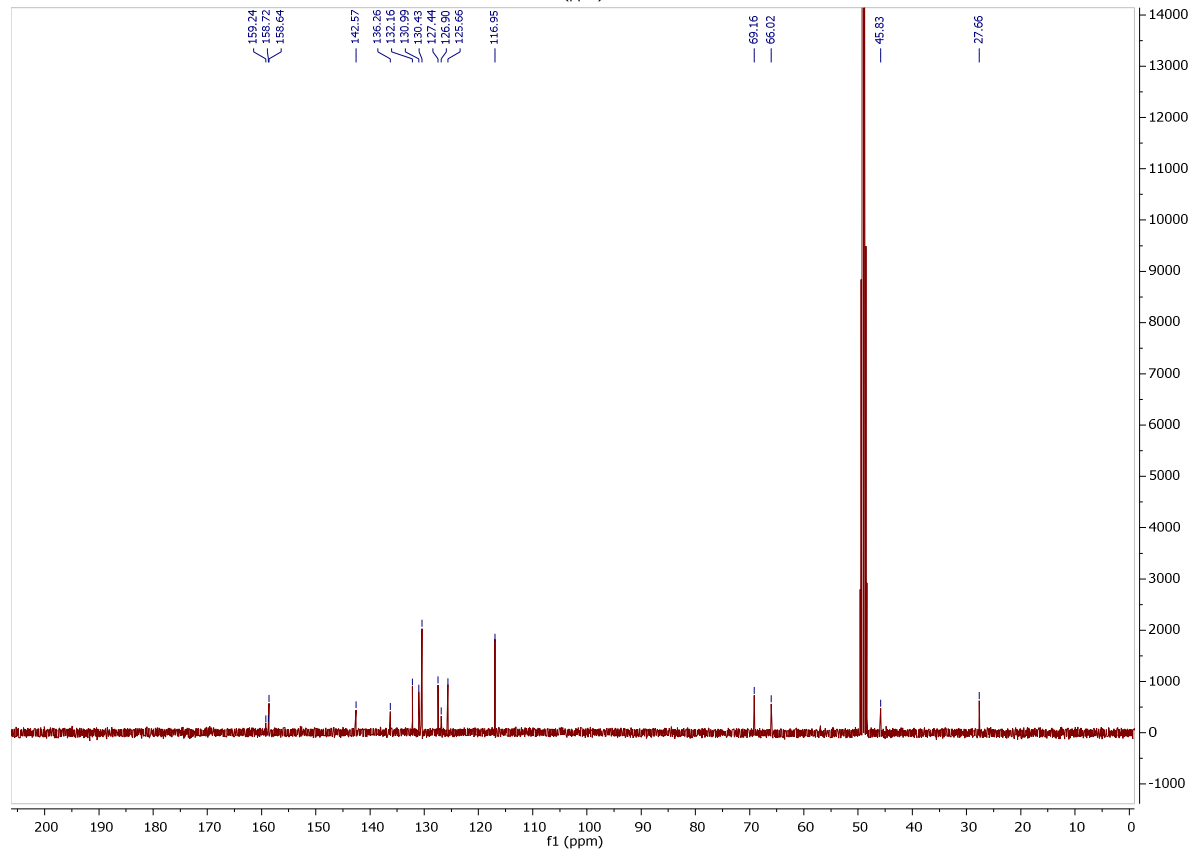
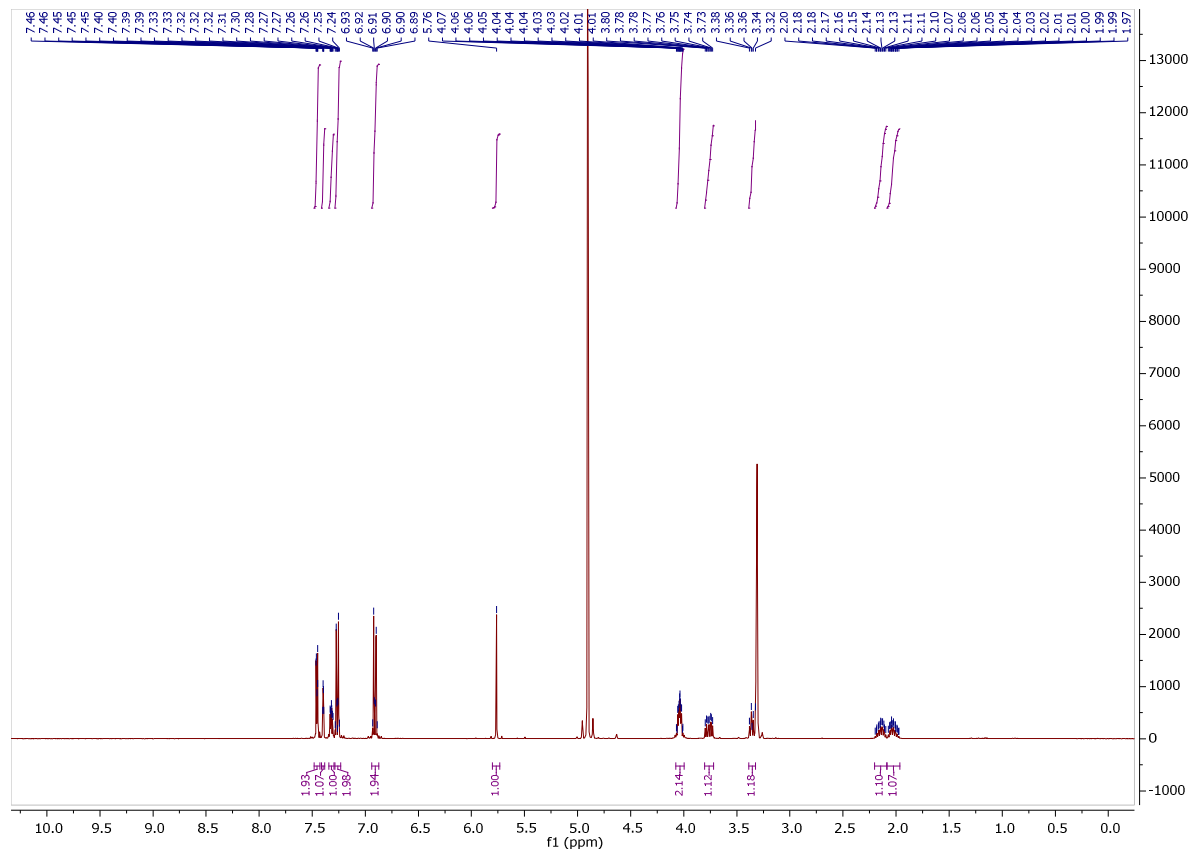
11c



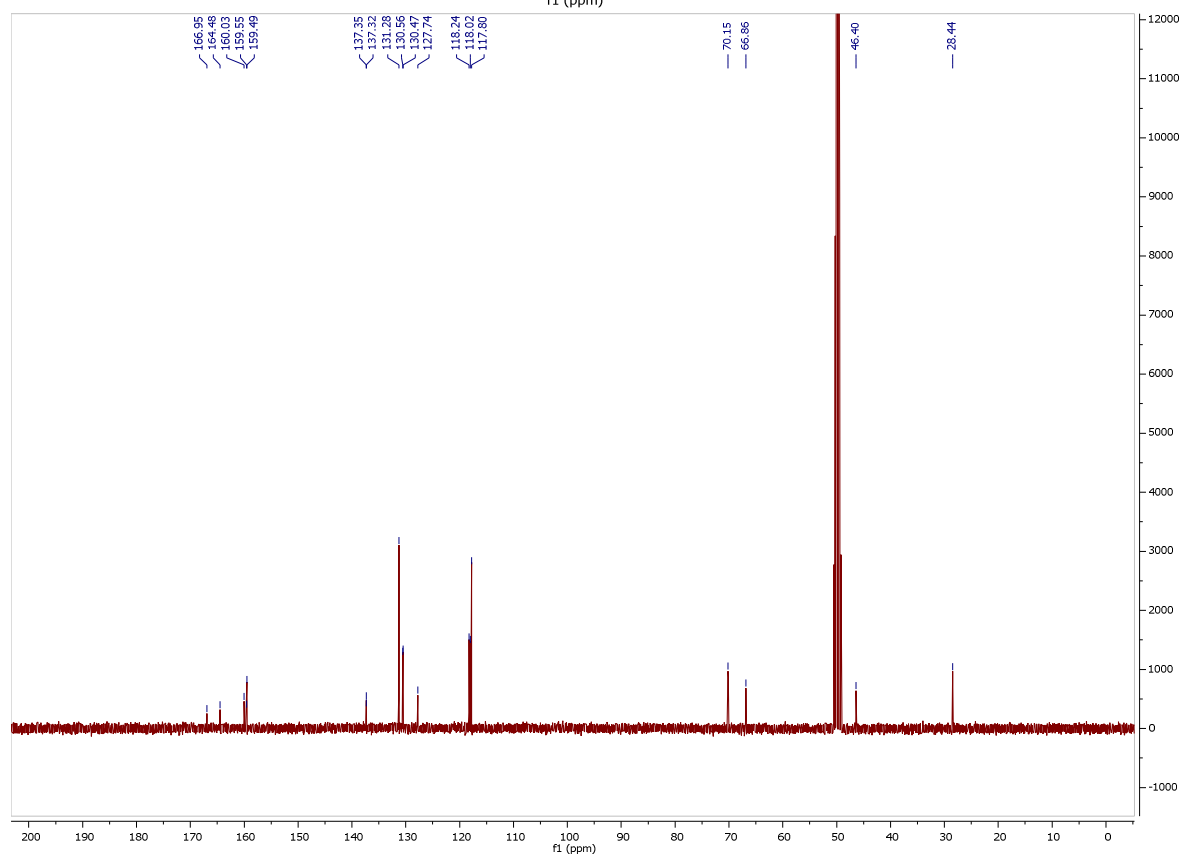
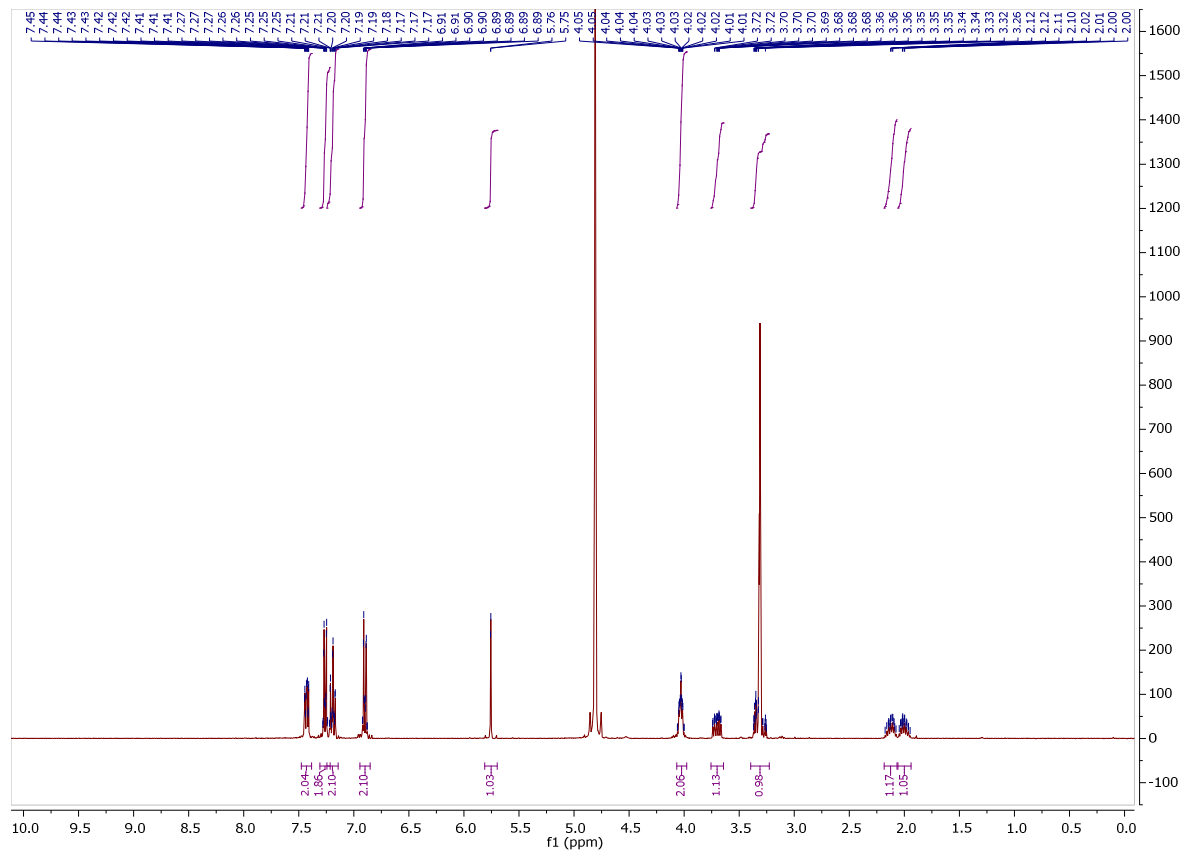
11d



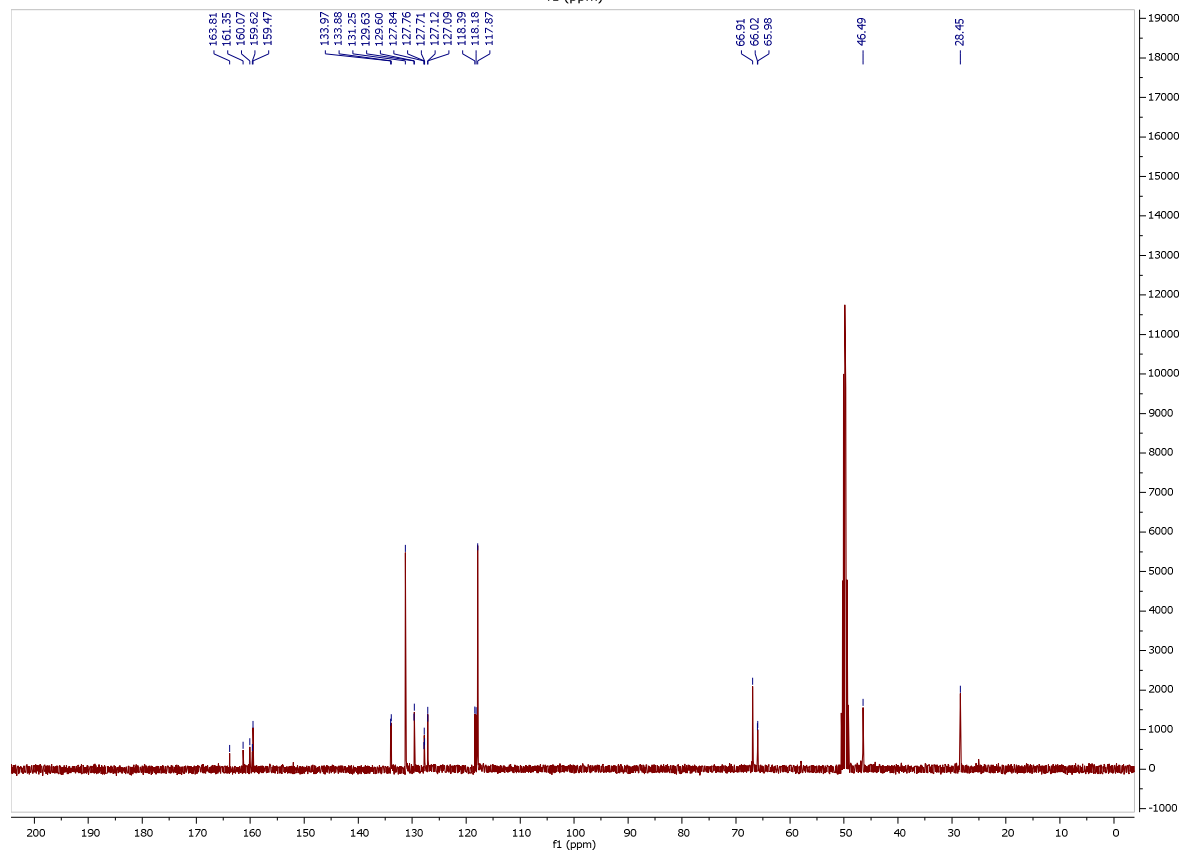
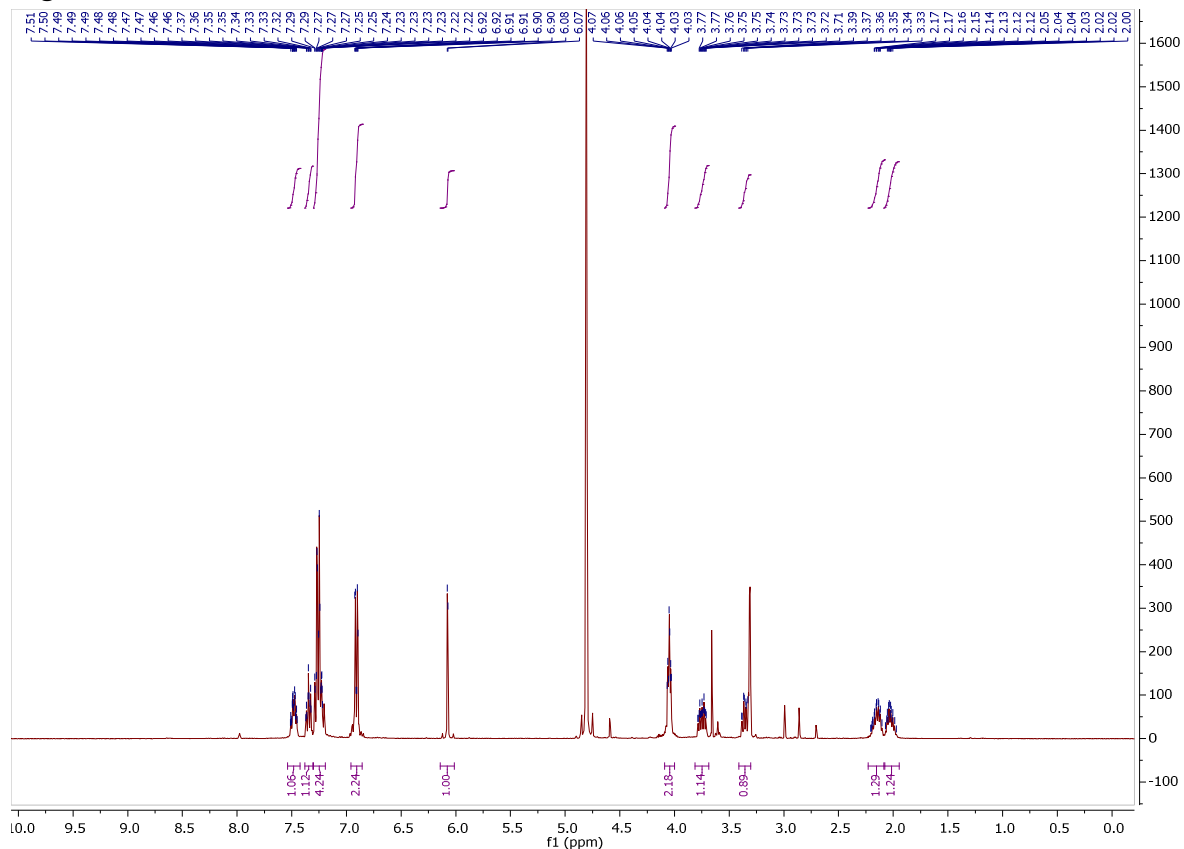
11e



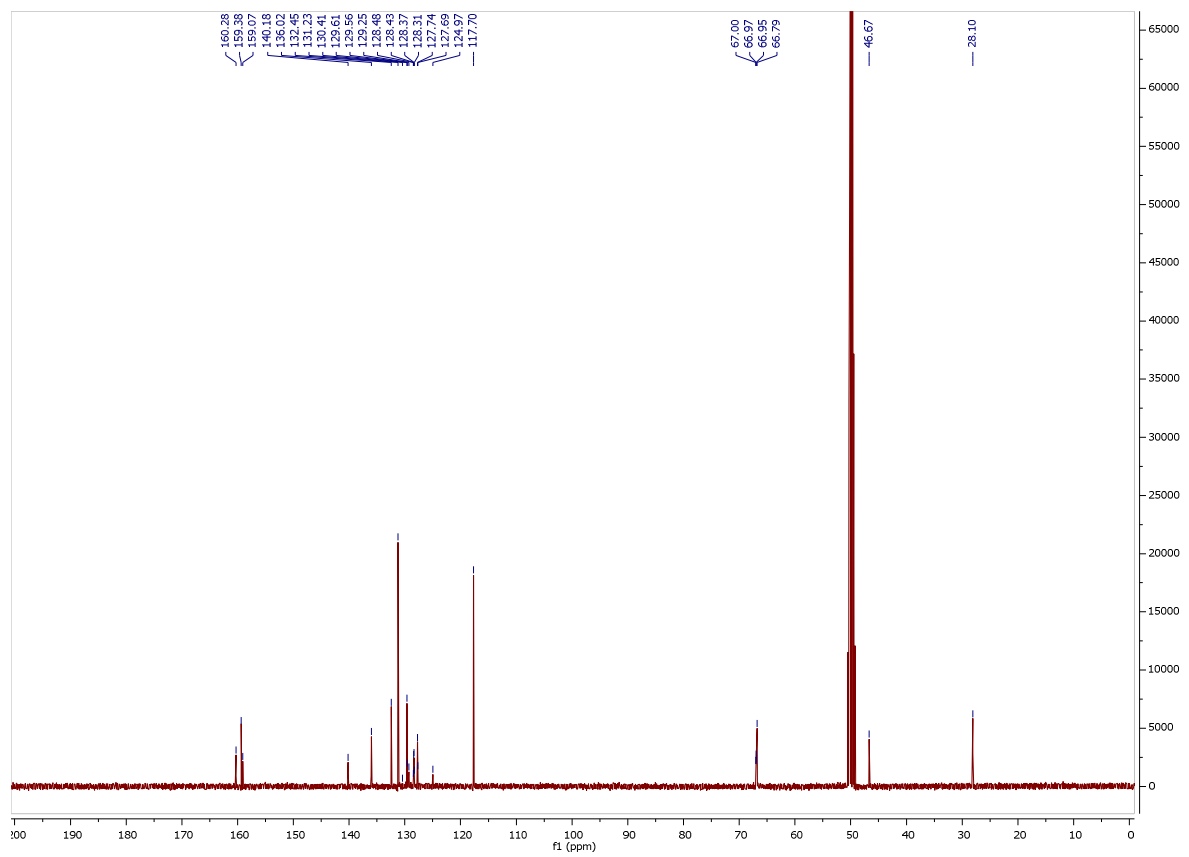
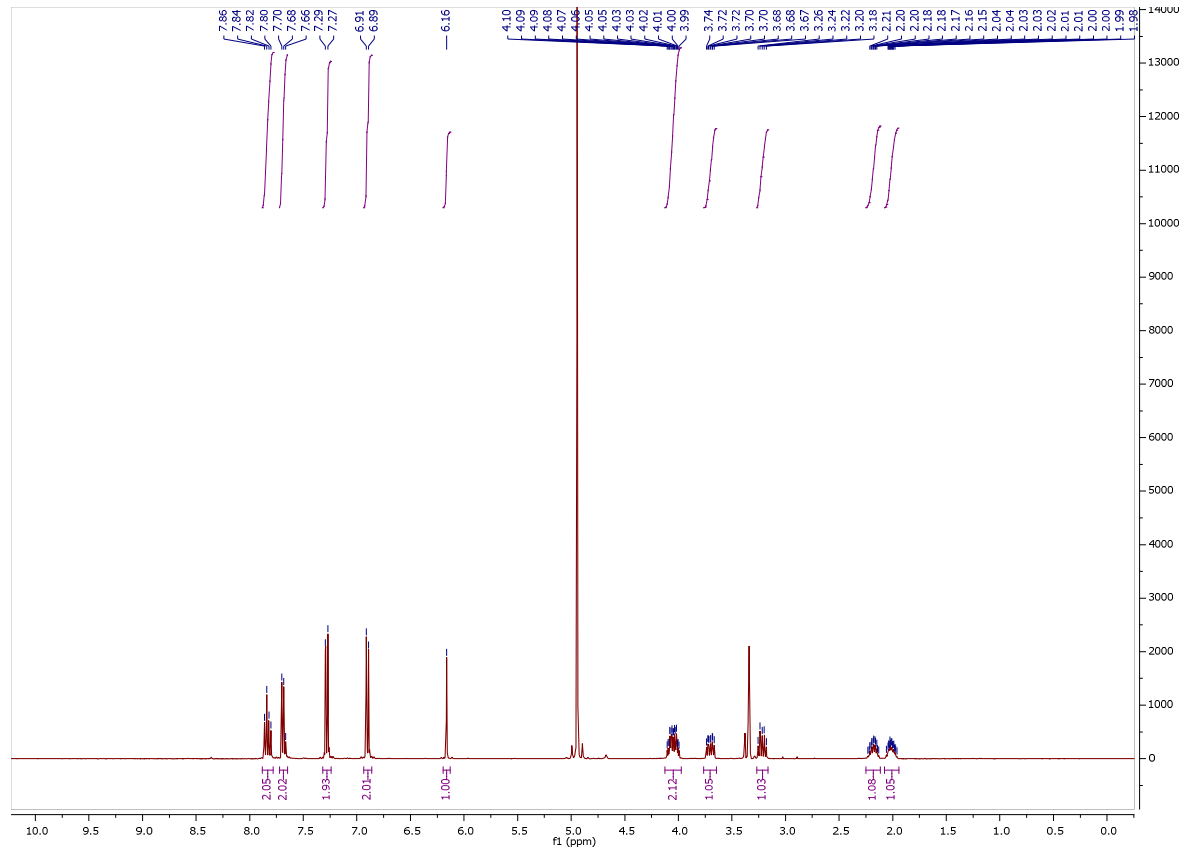
11f



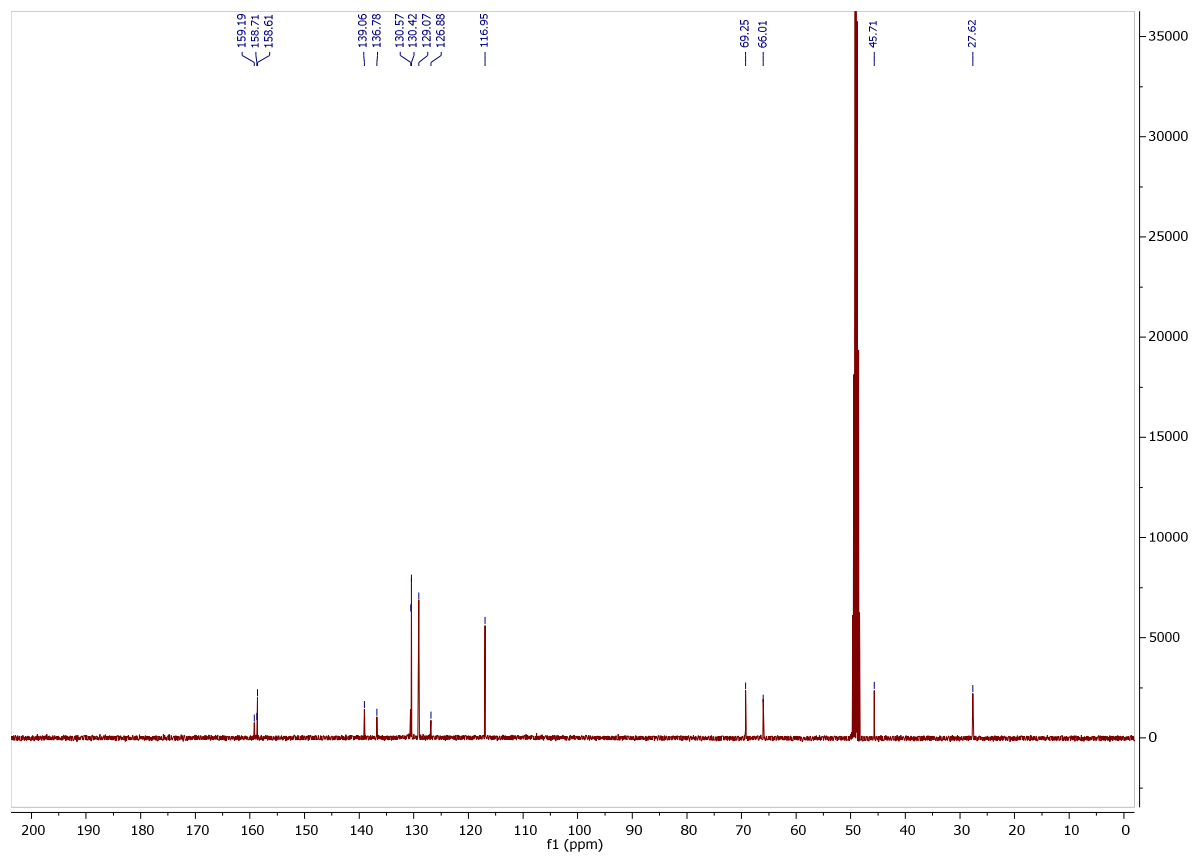
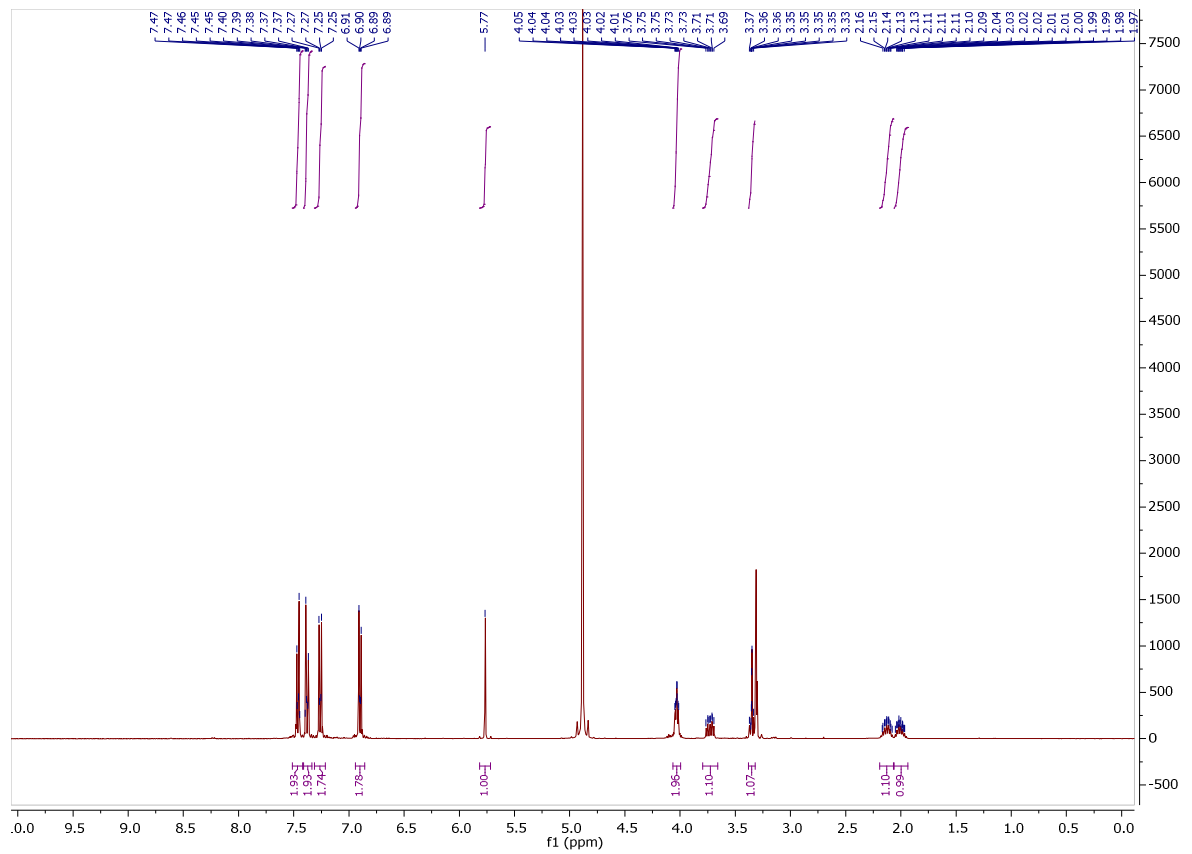
11g



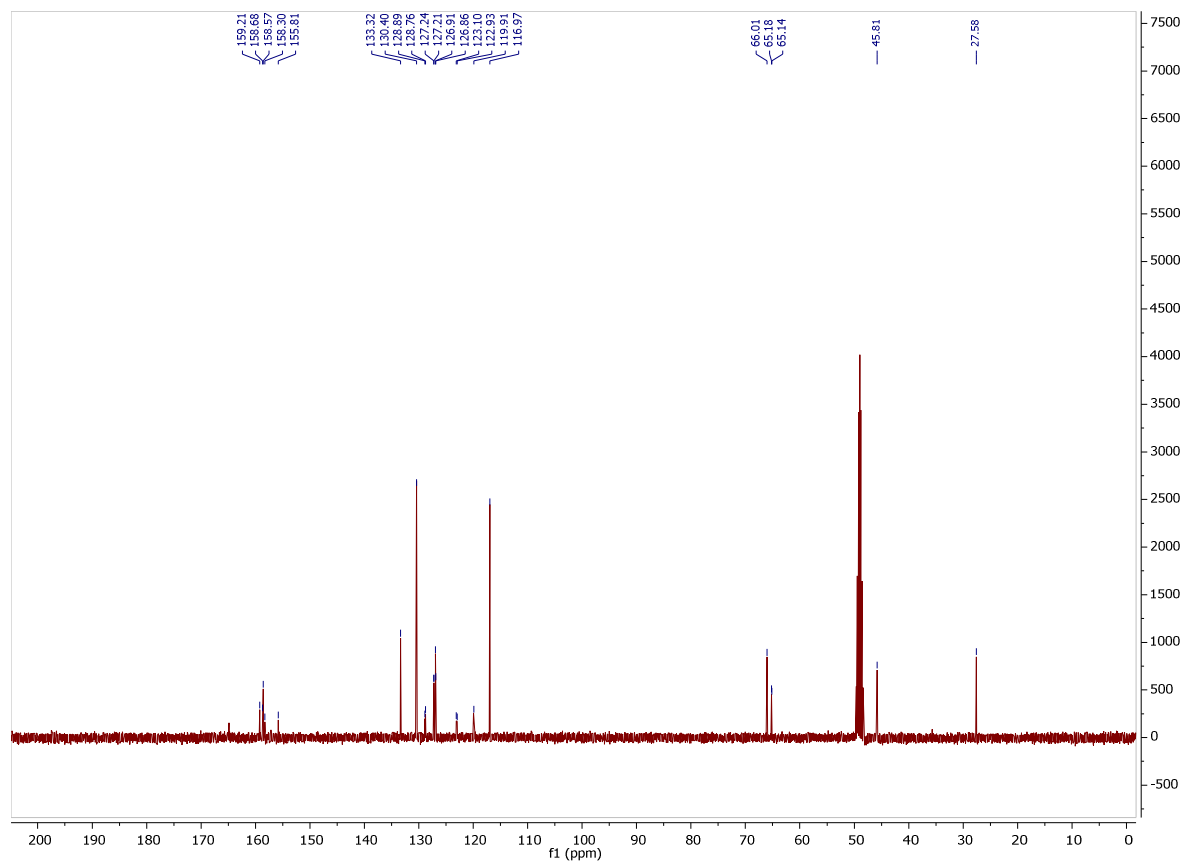
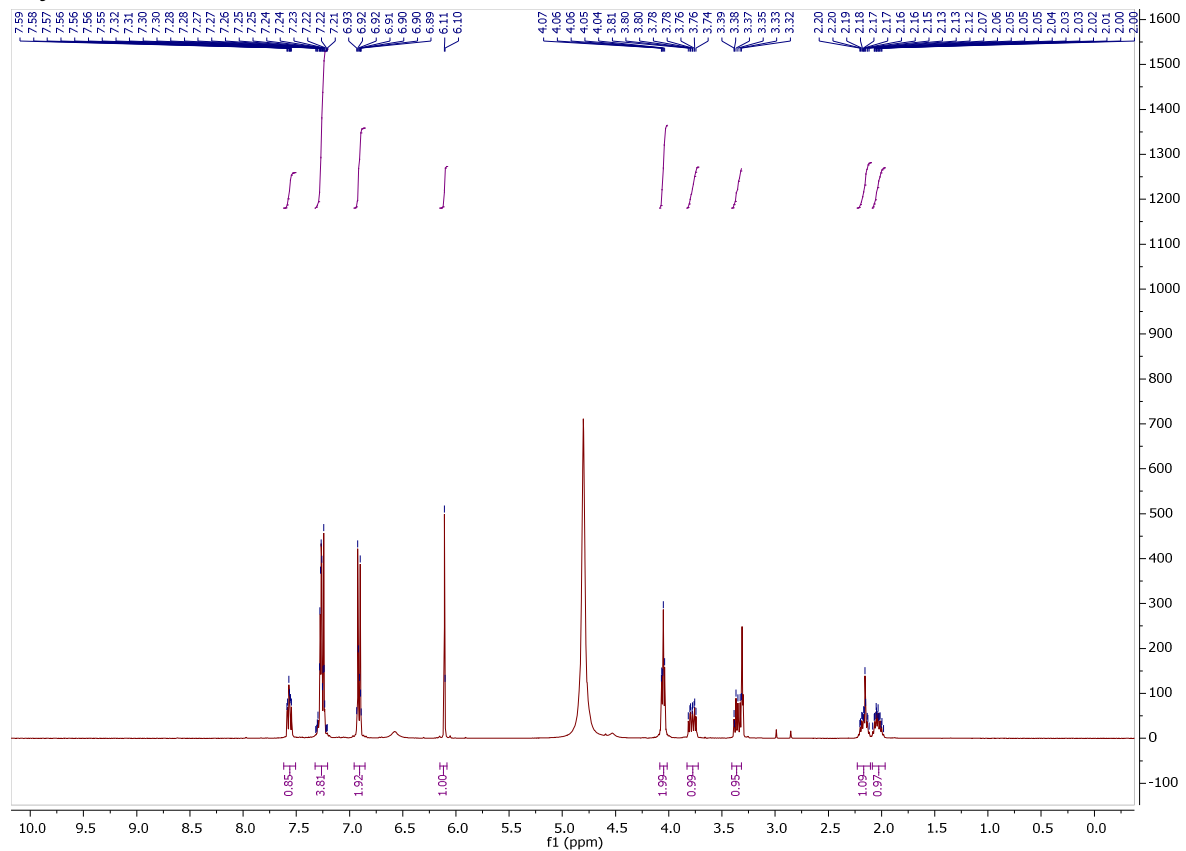
11h



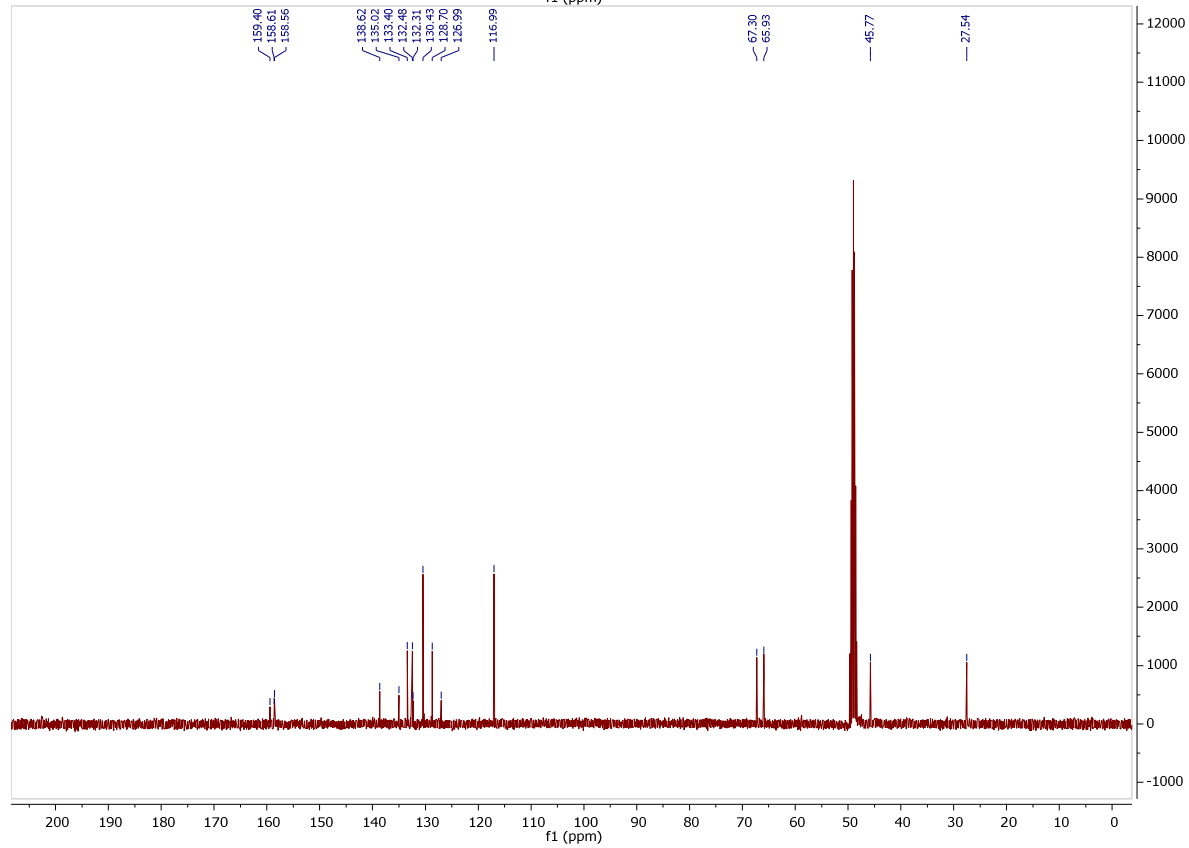
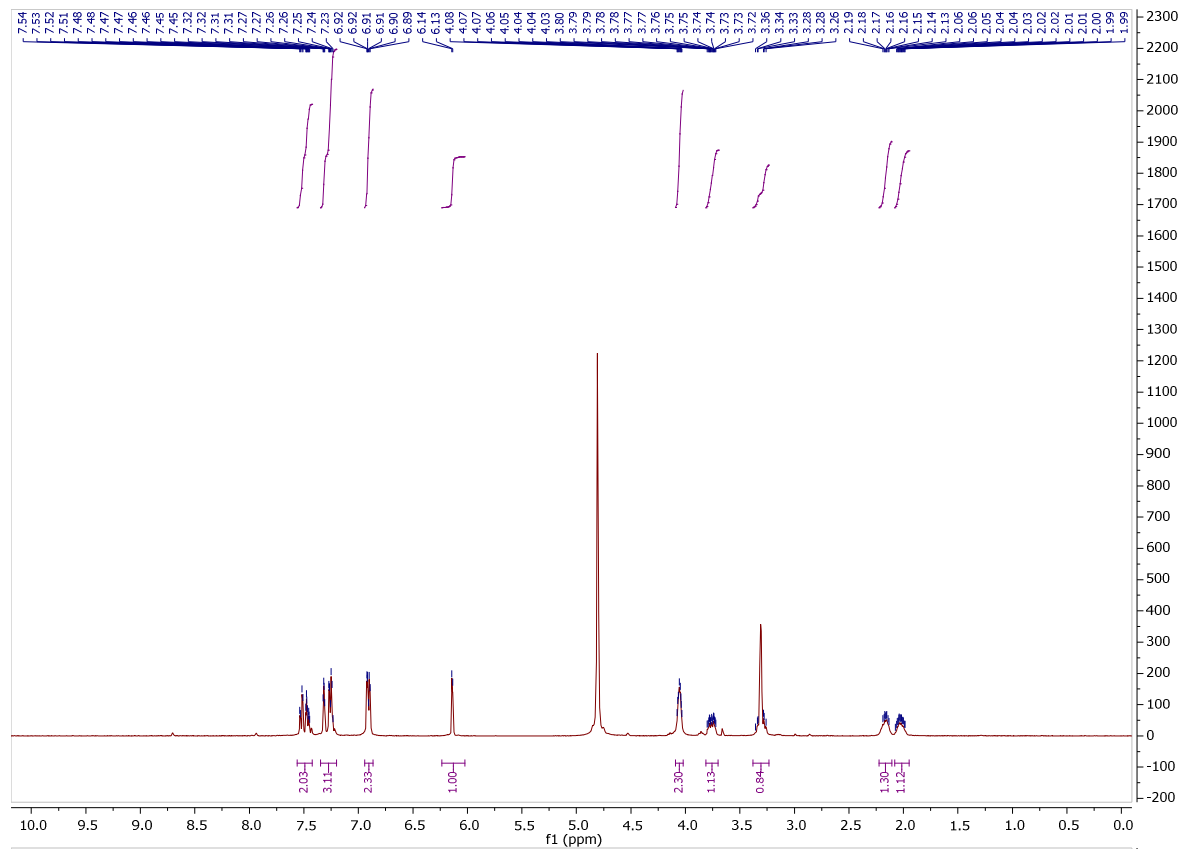
11i

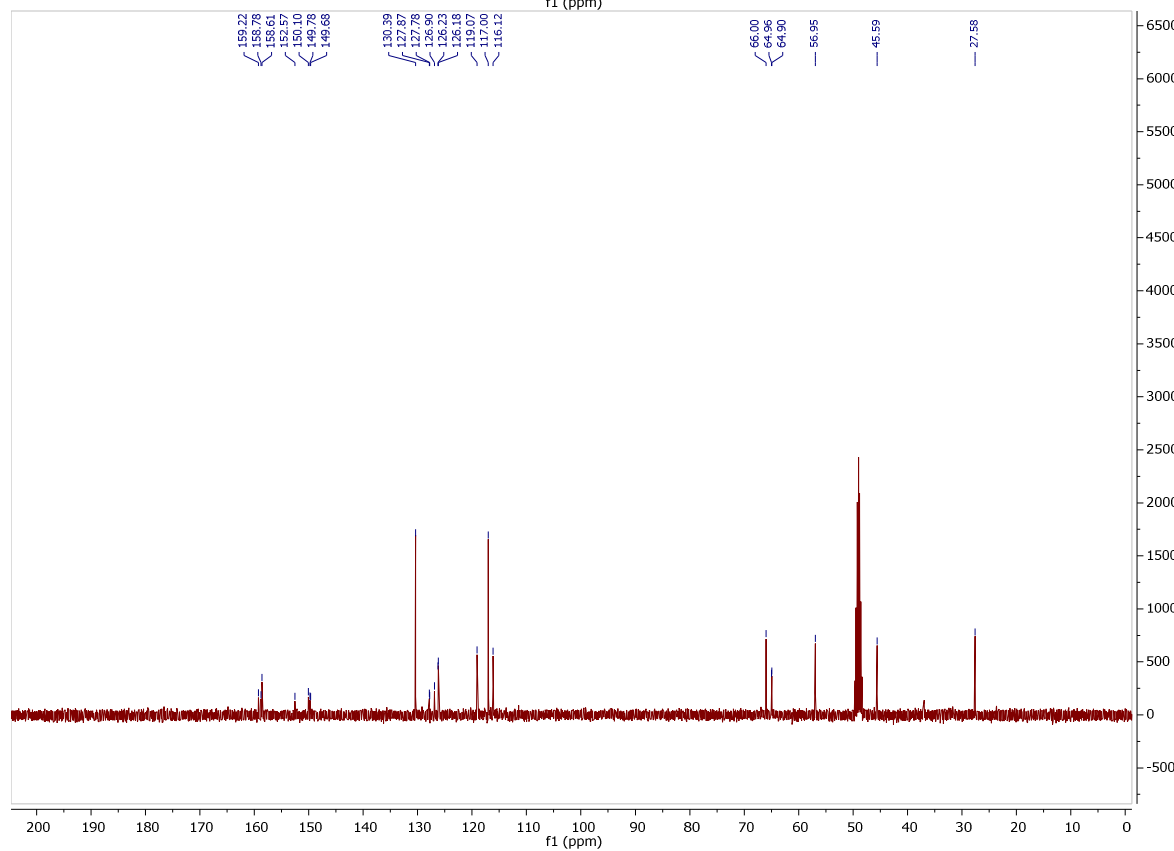
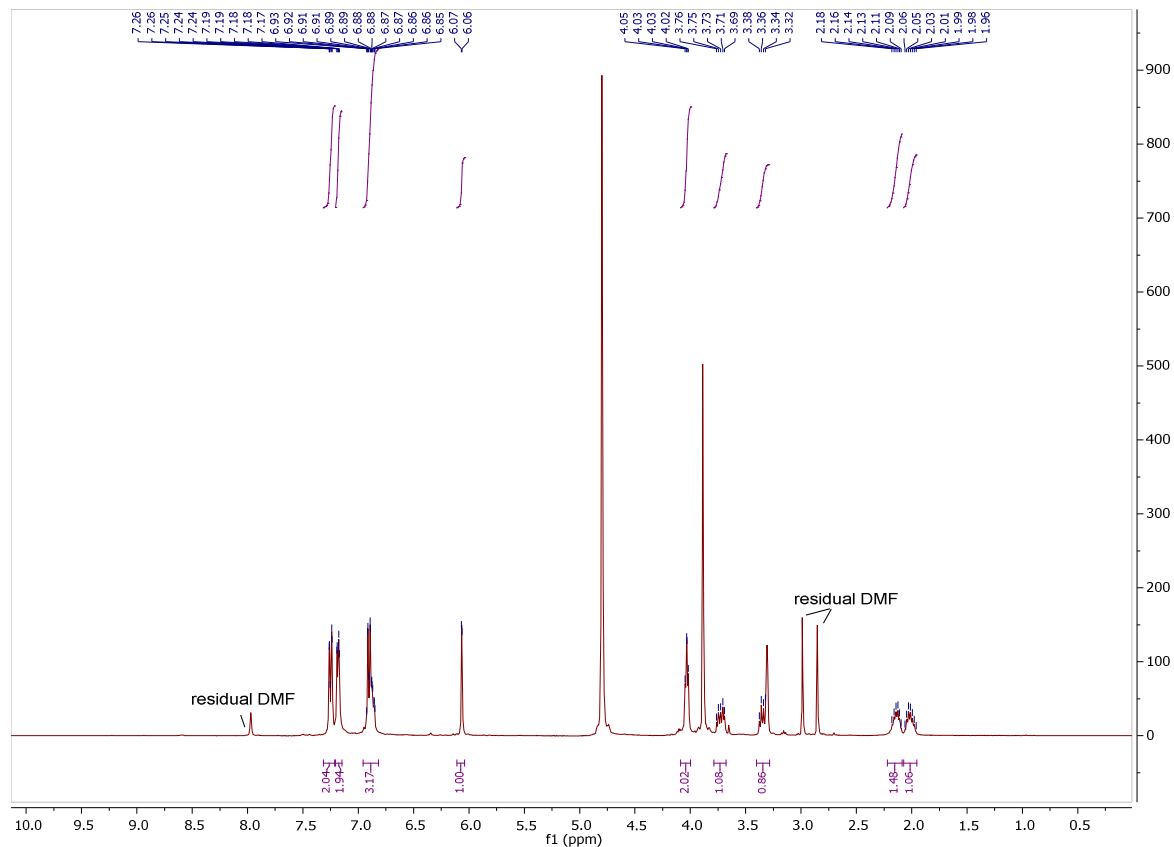


11j

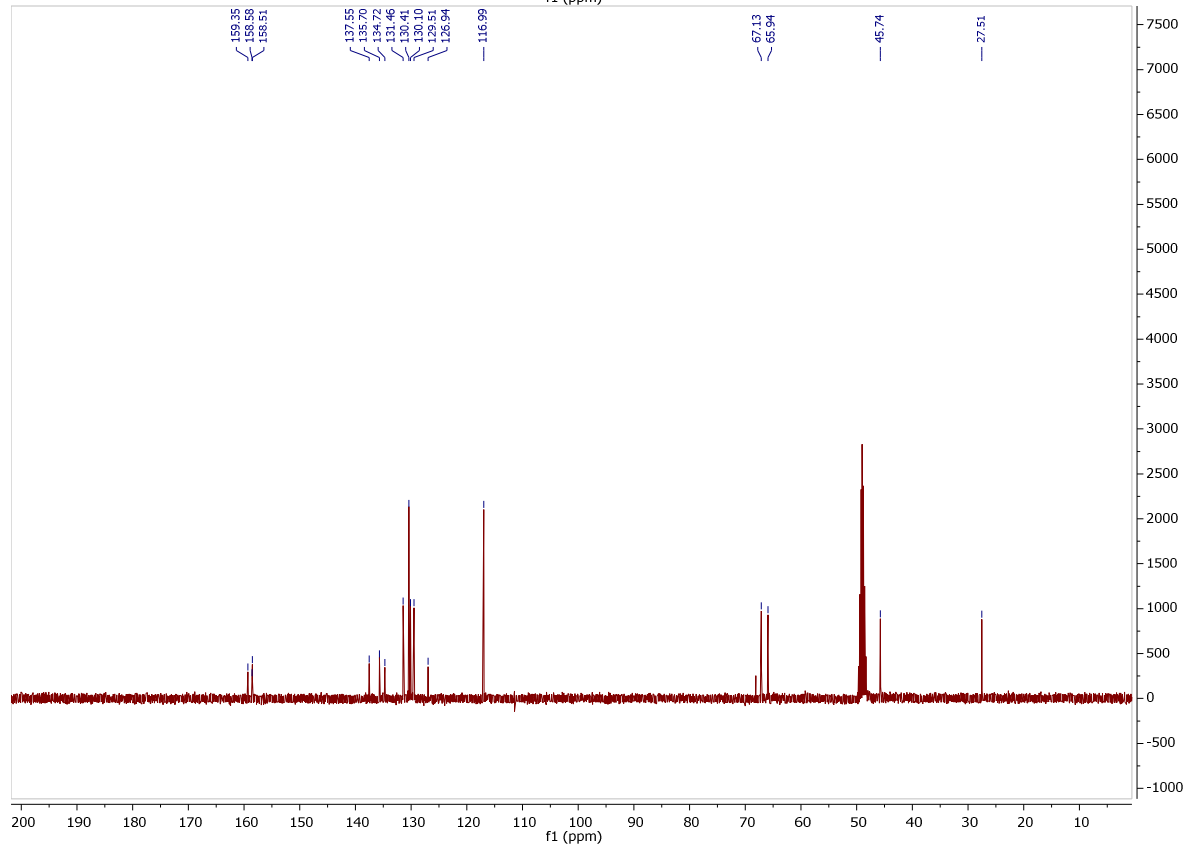
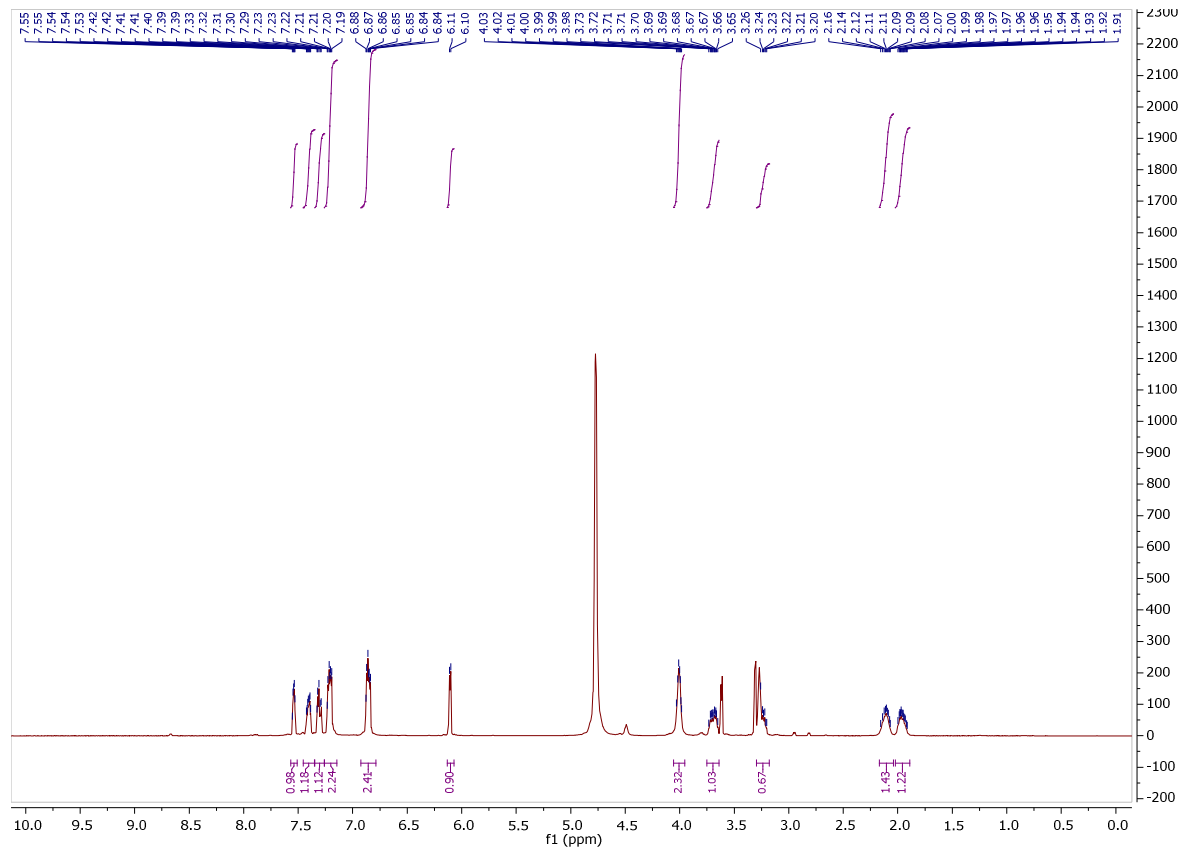


11k

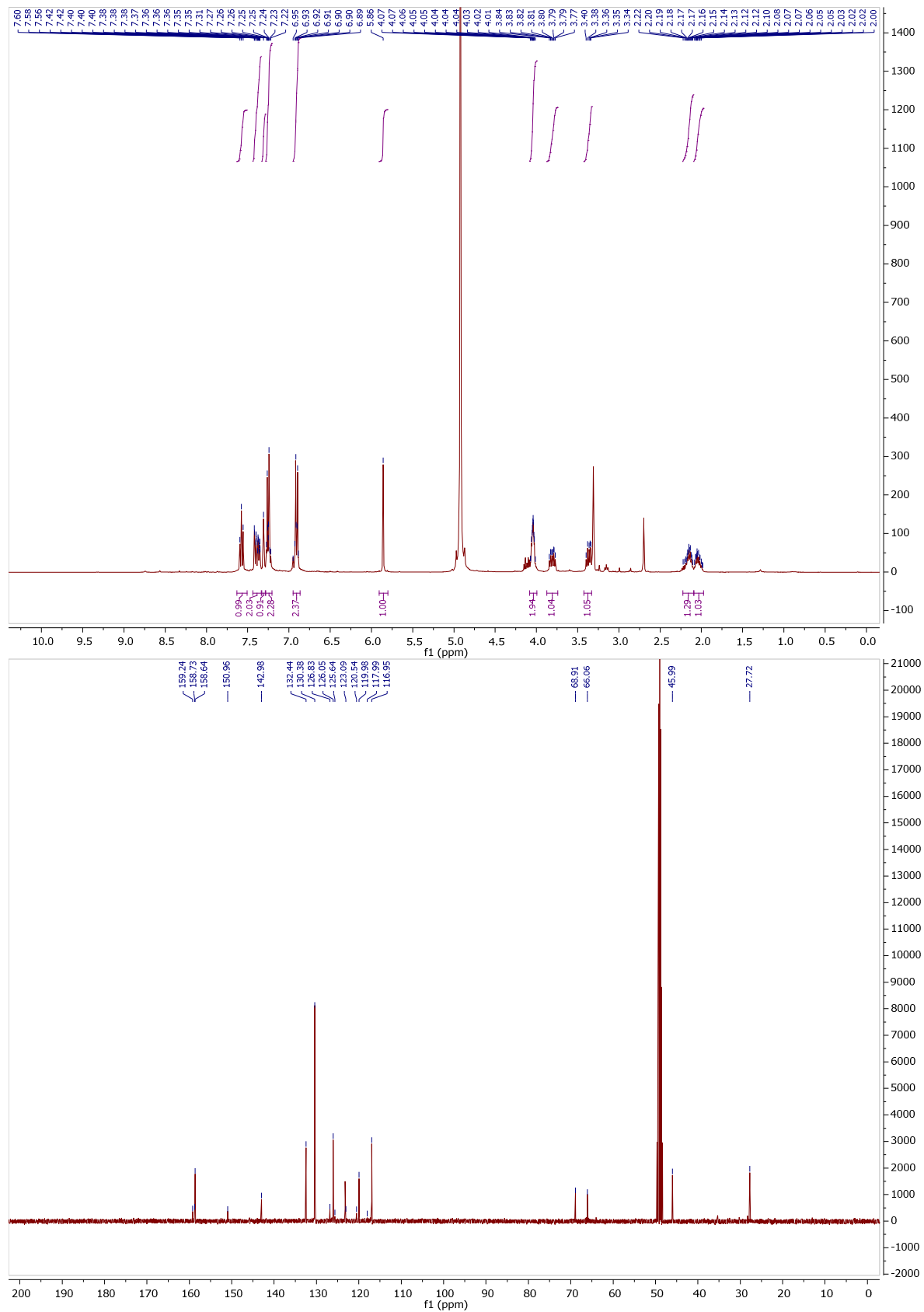




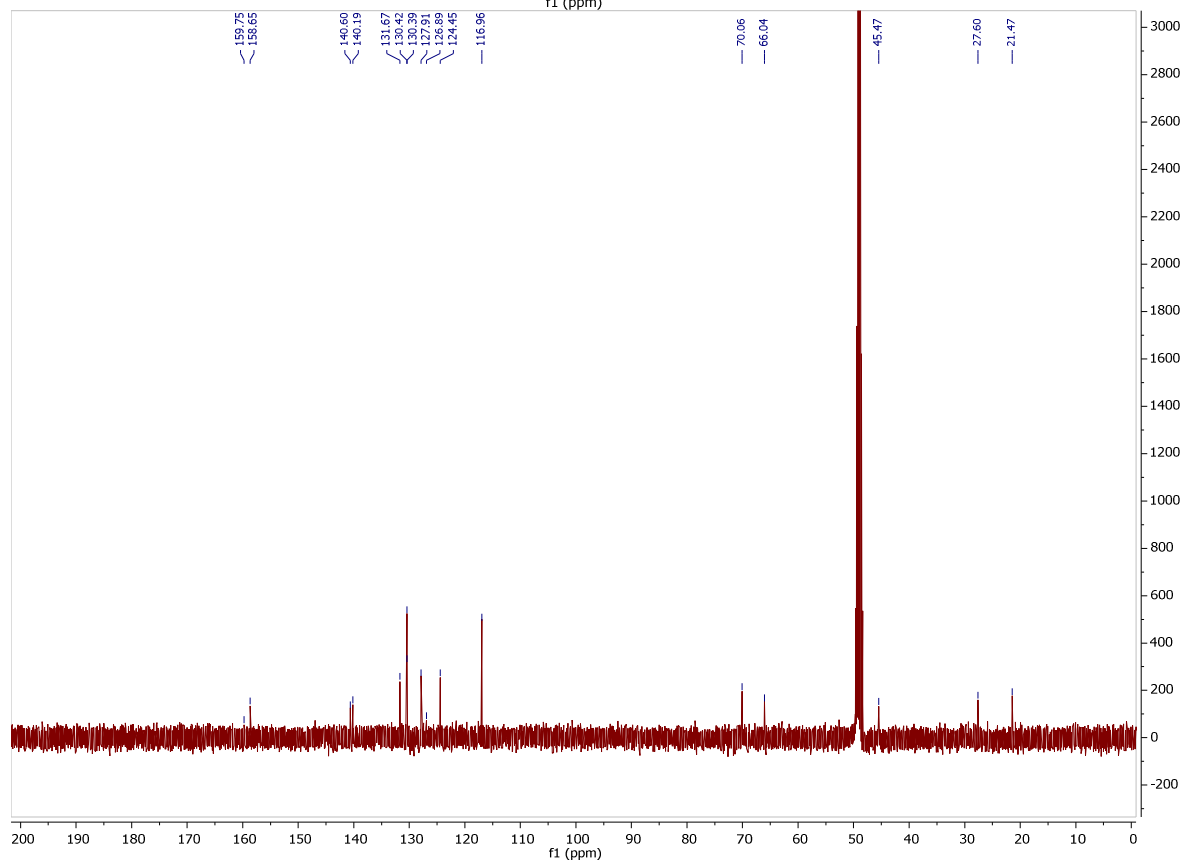
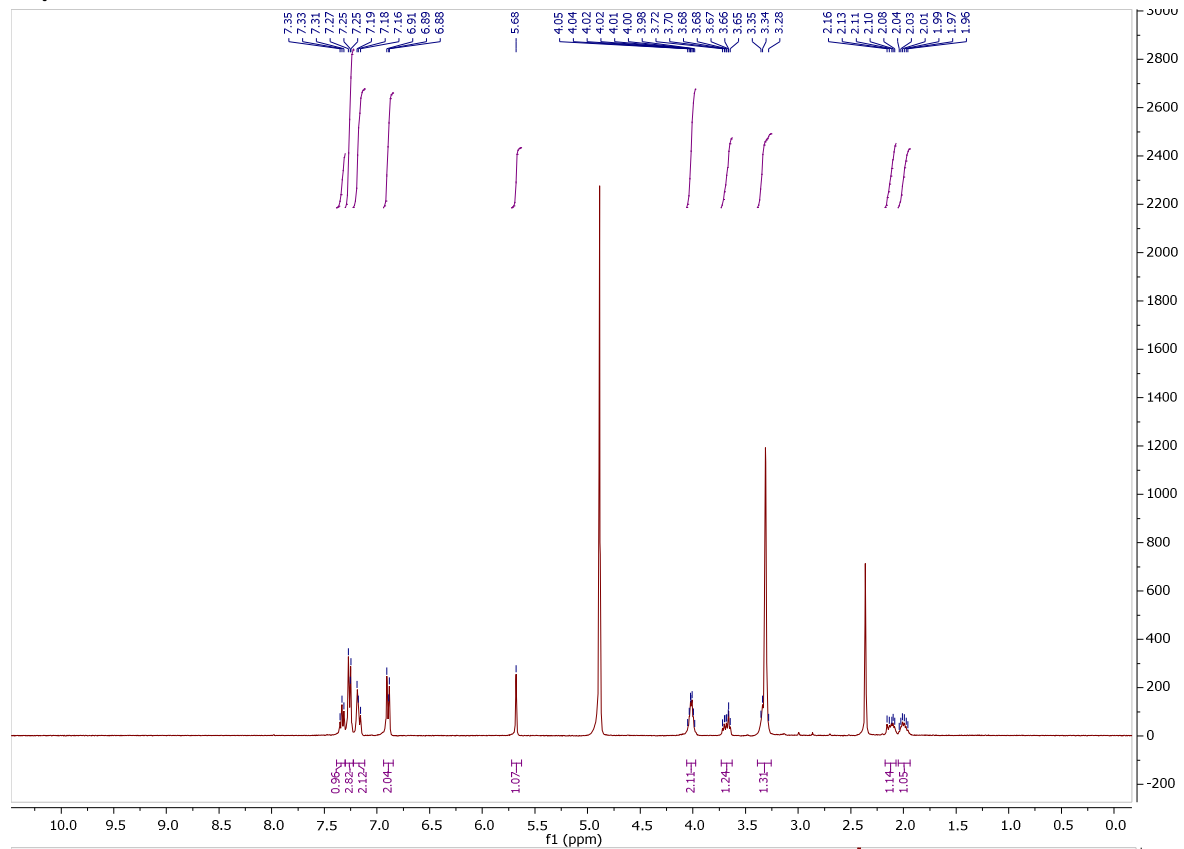
11n



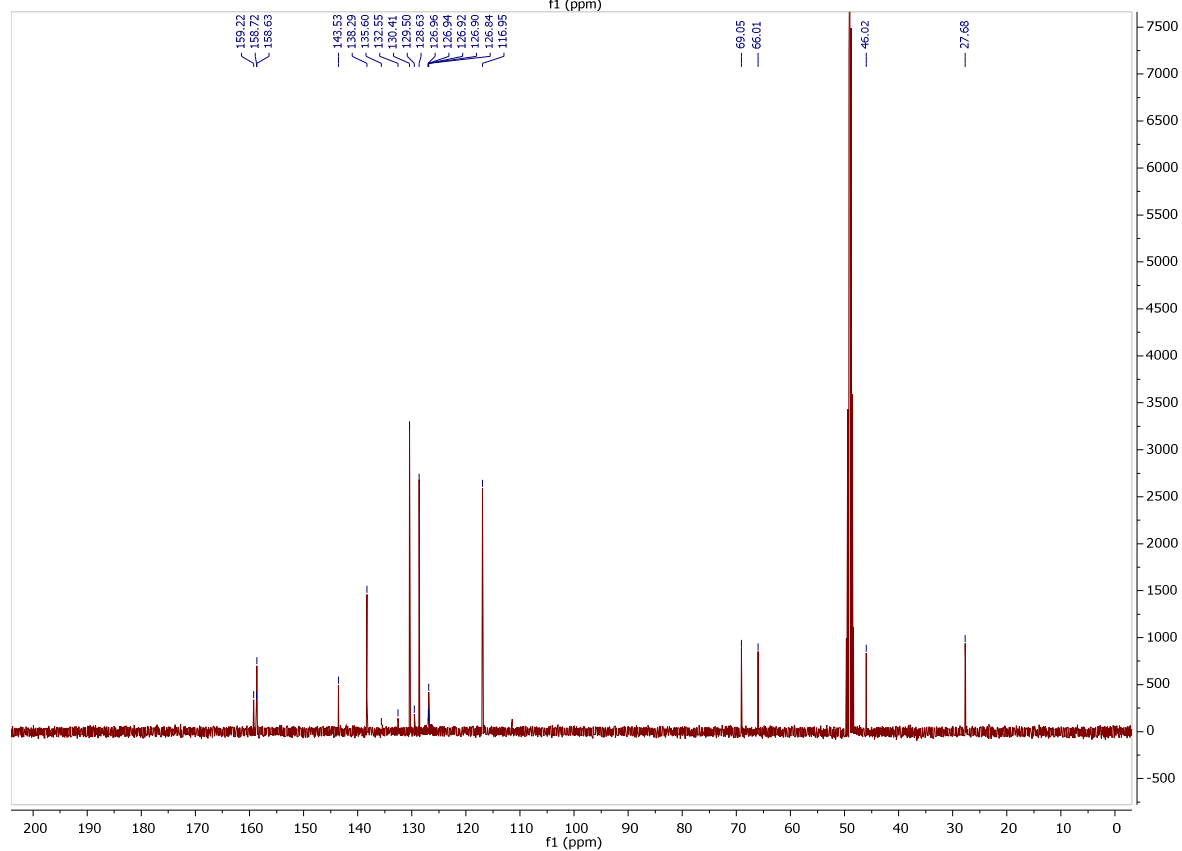
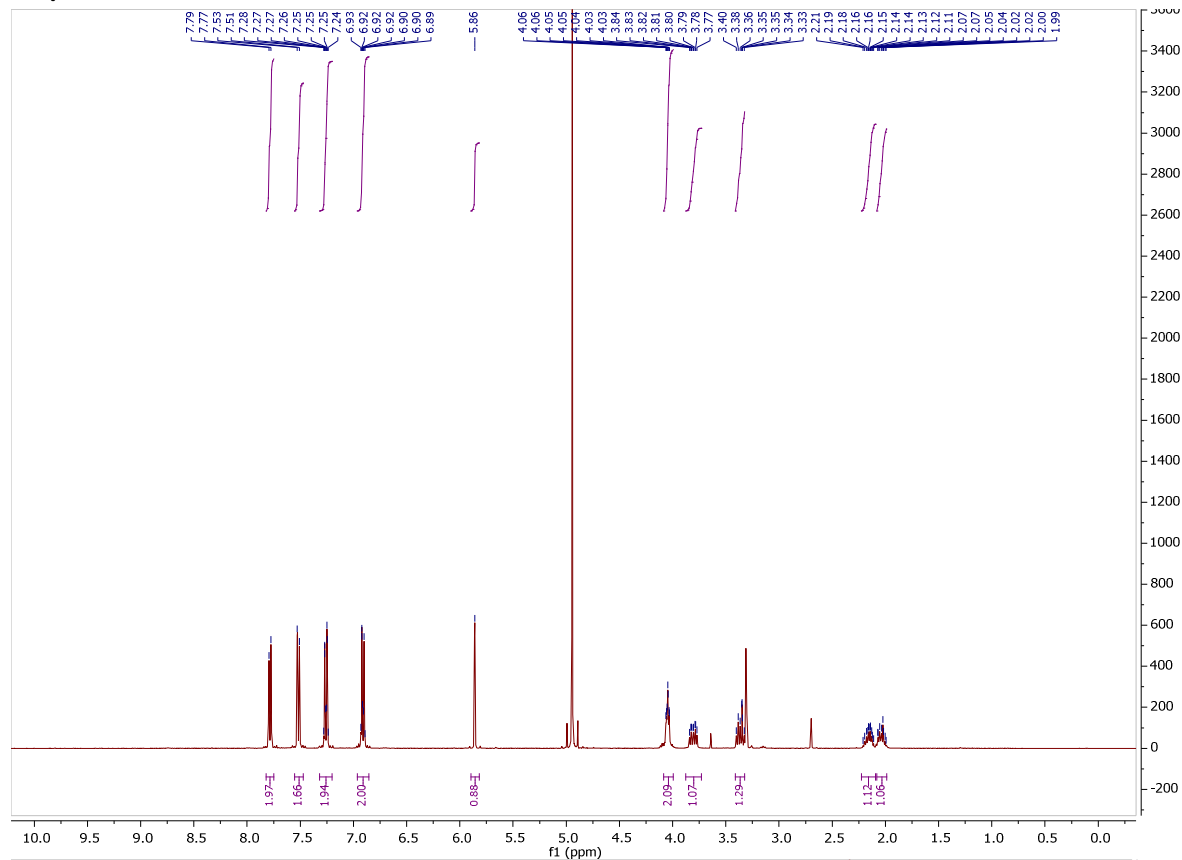
11o



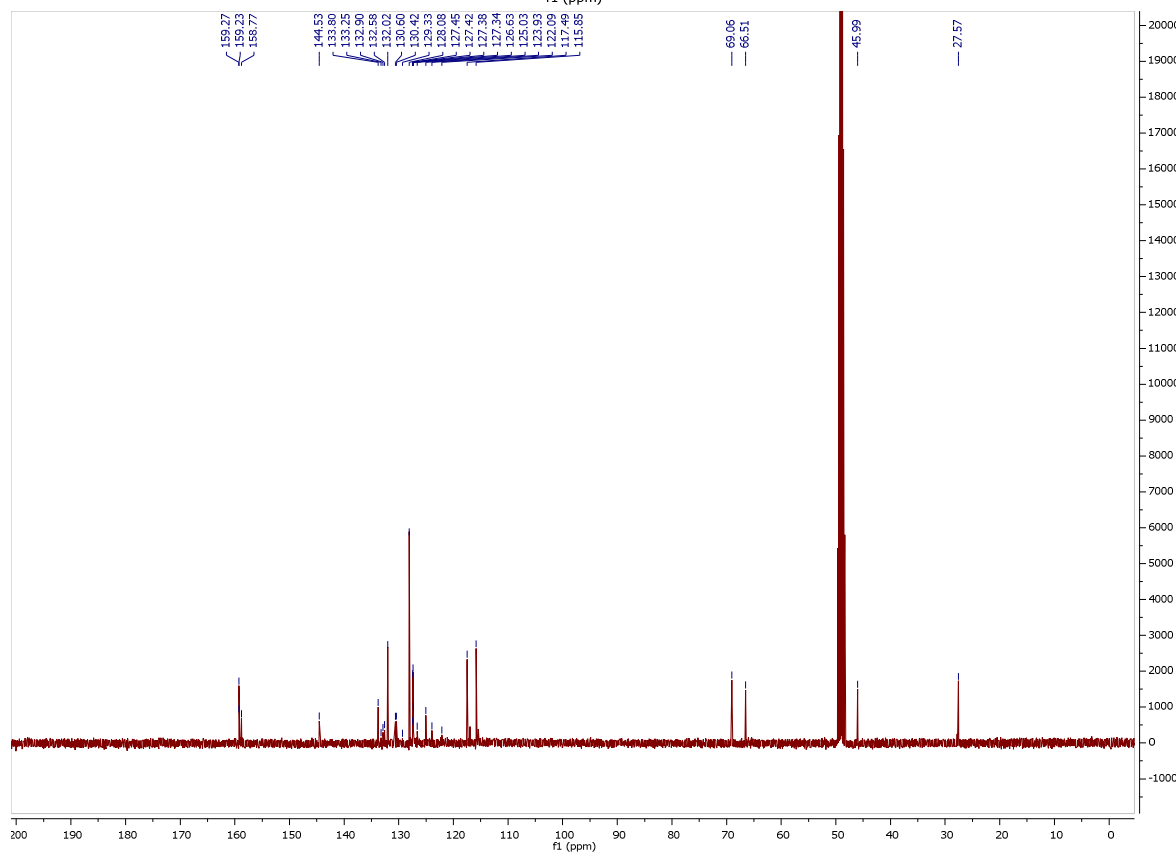
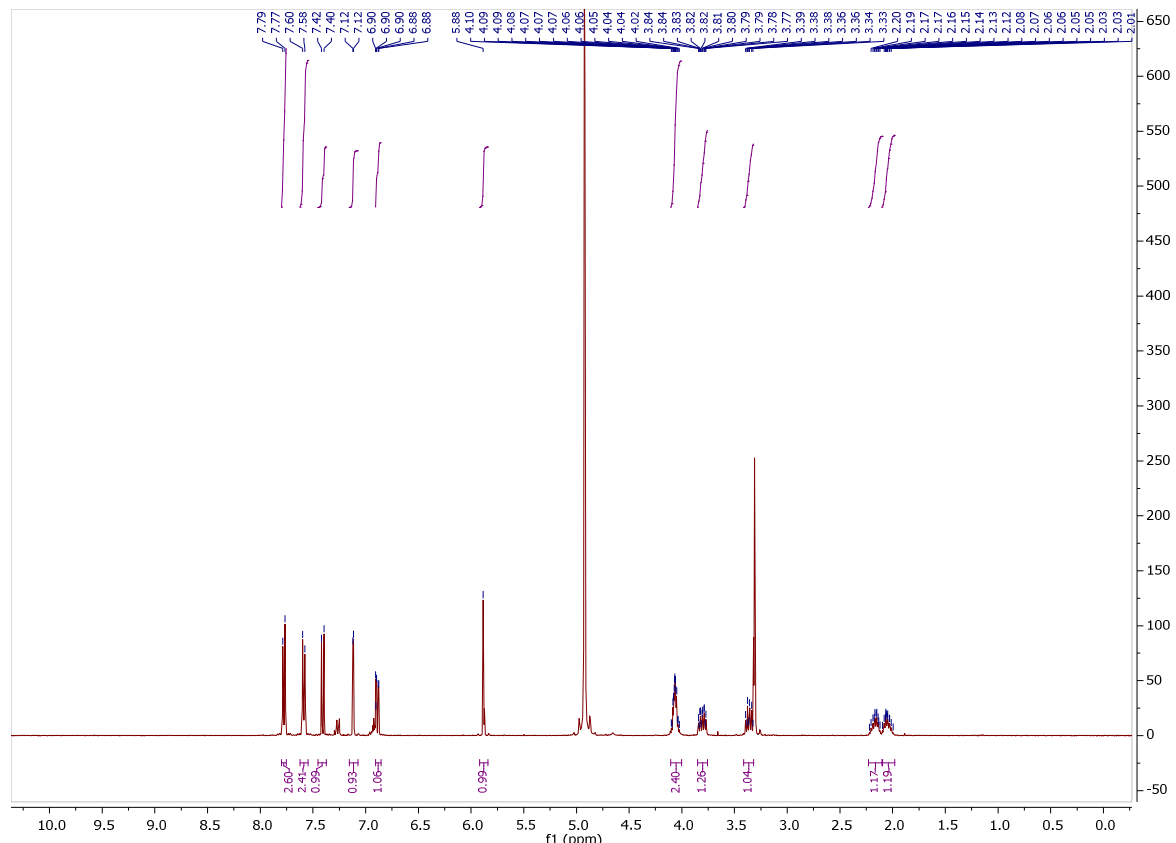
11p



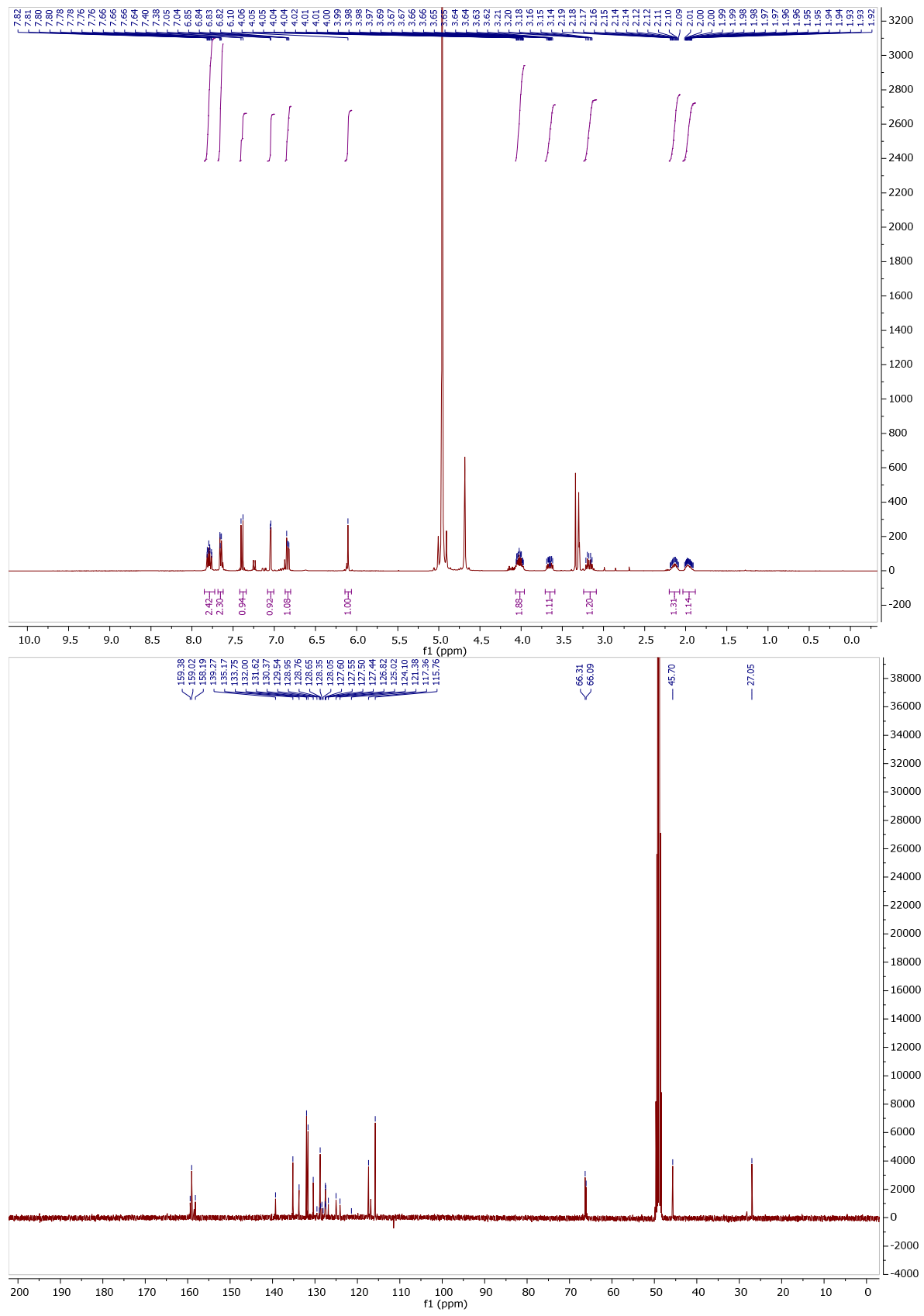
11q



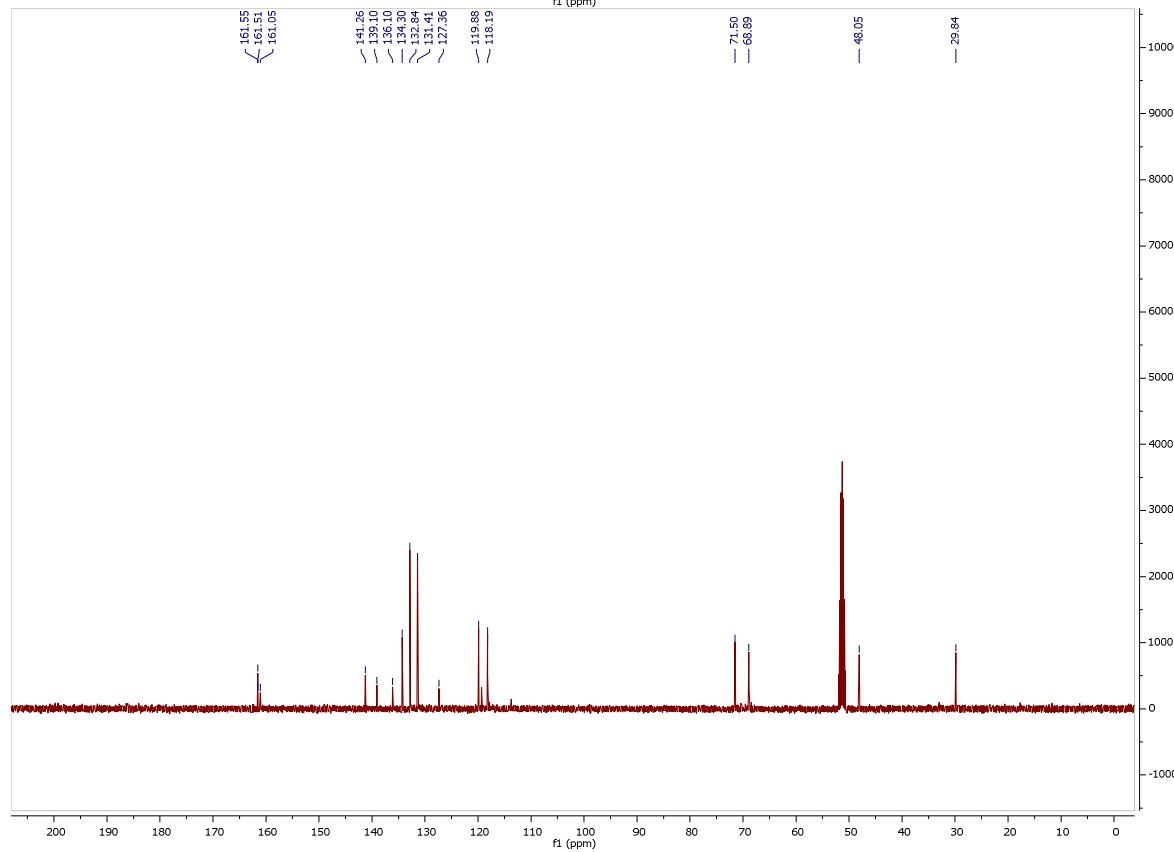
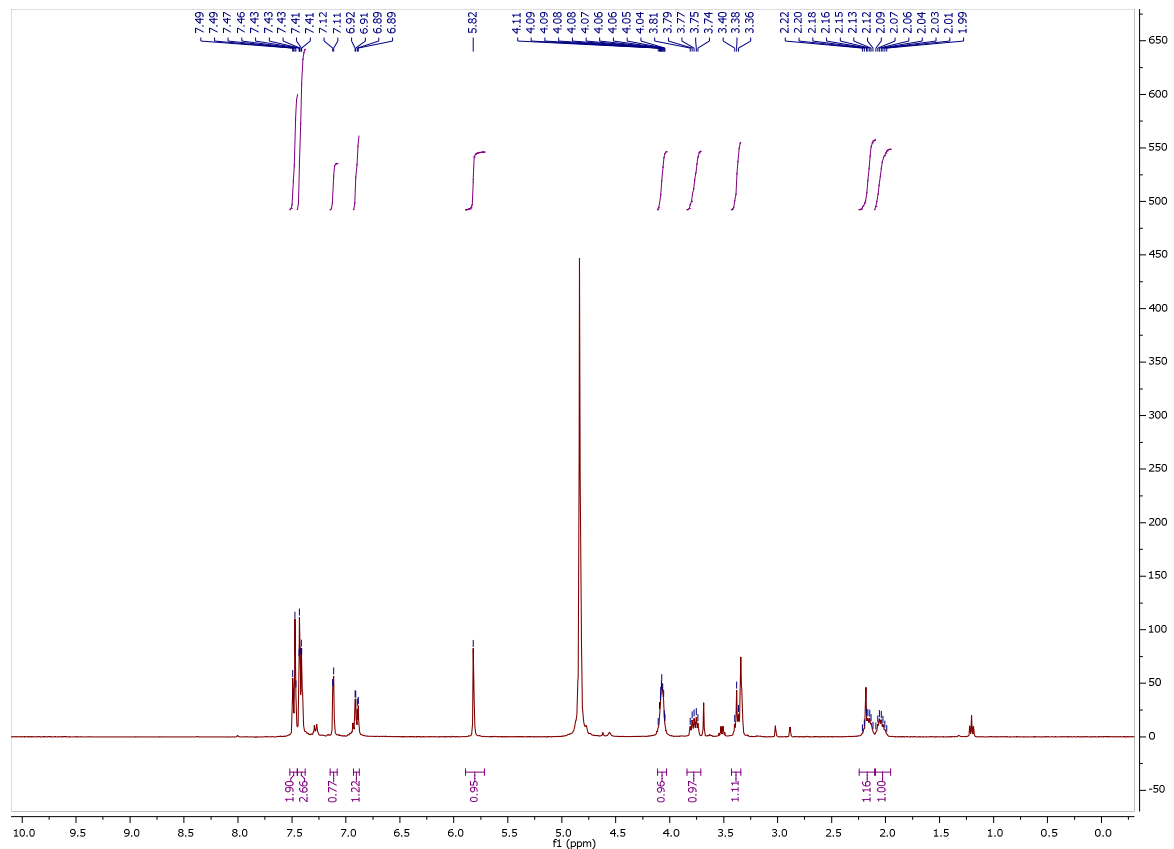
11r



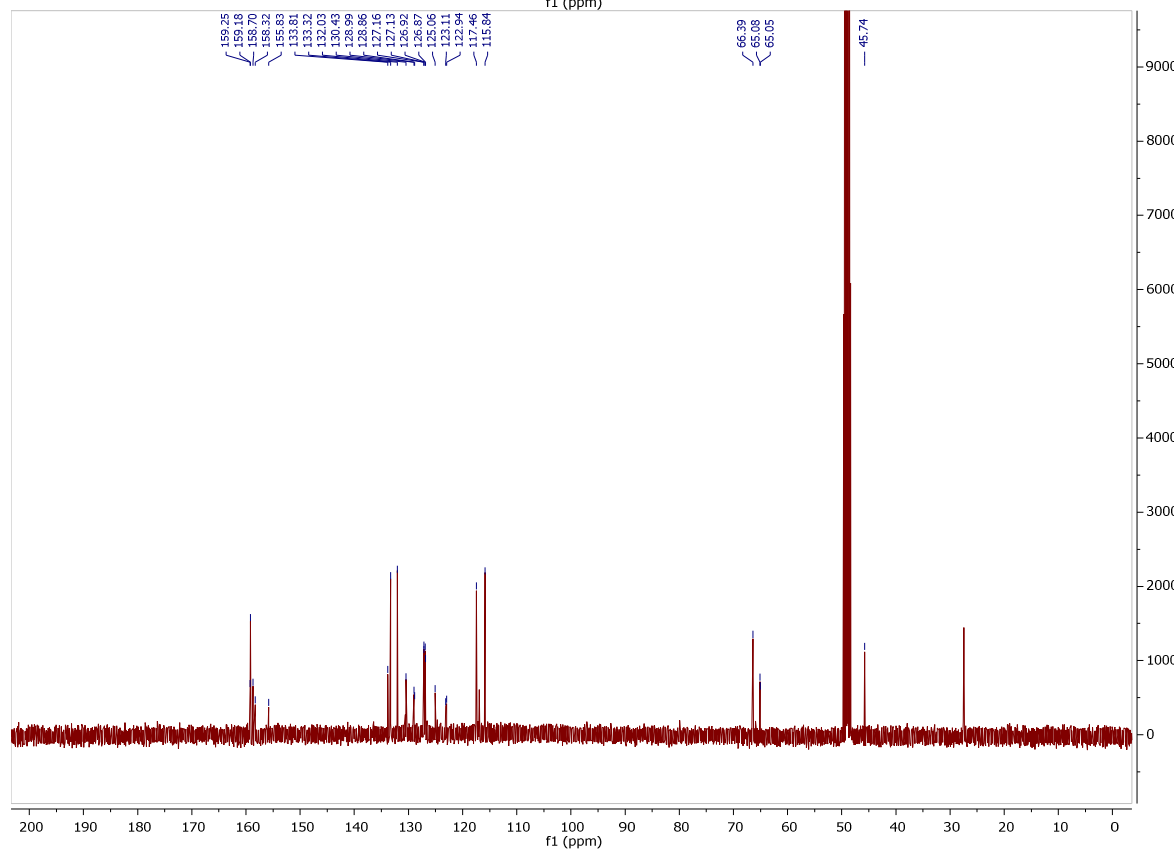
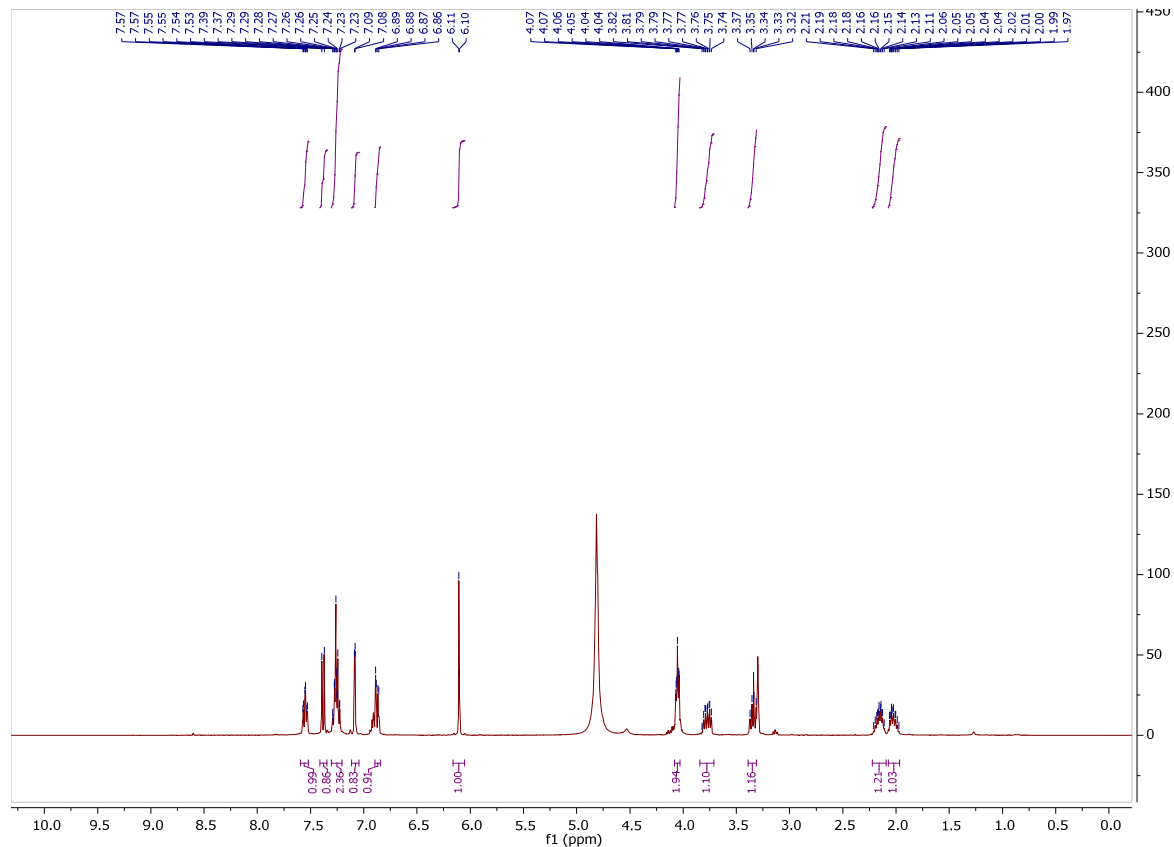
11s



11t



11u



11v

