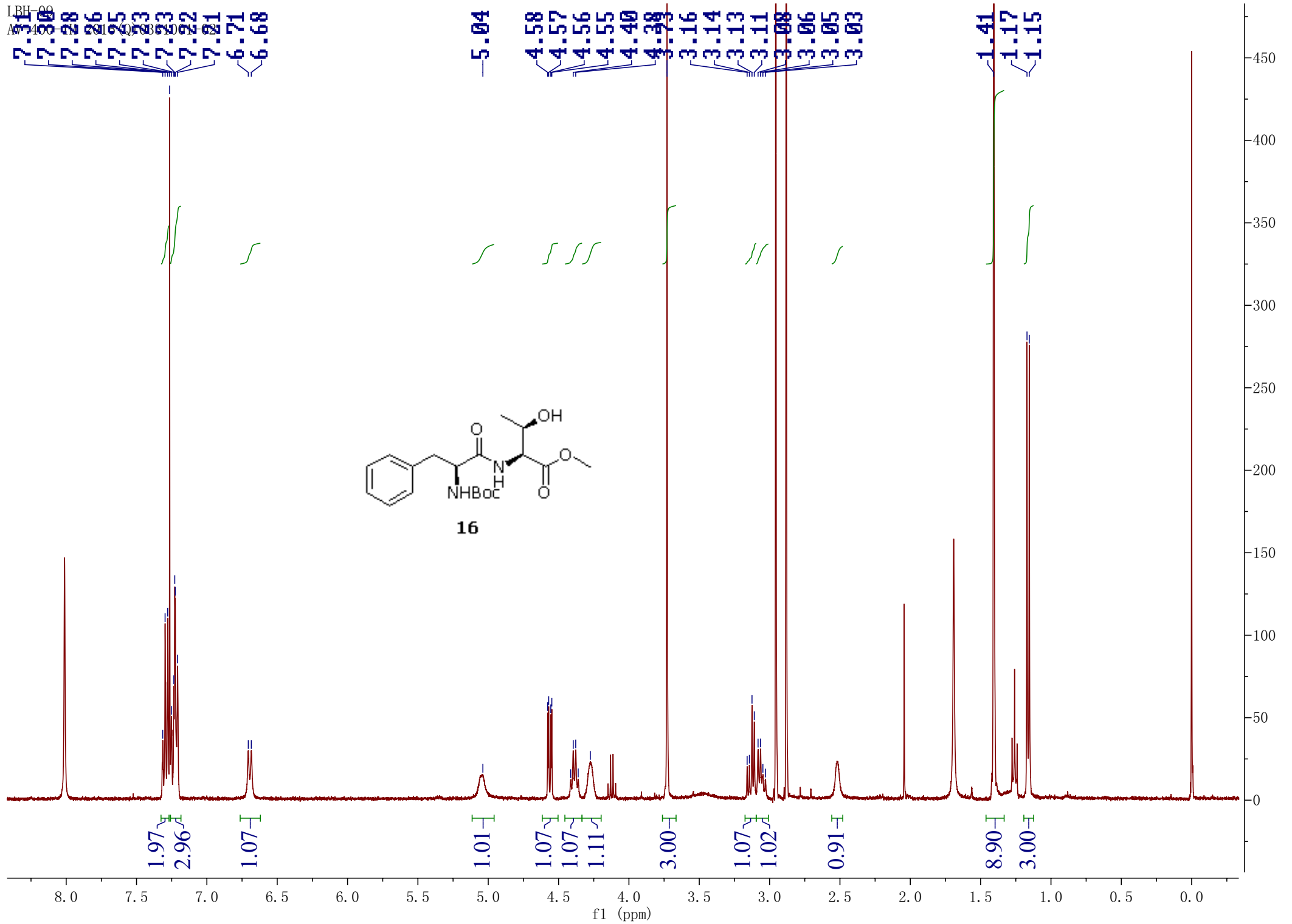
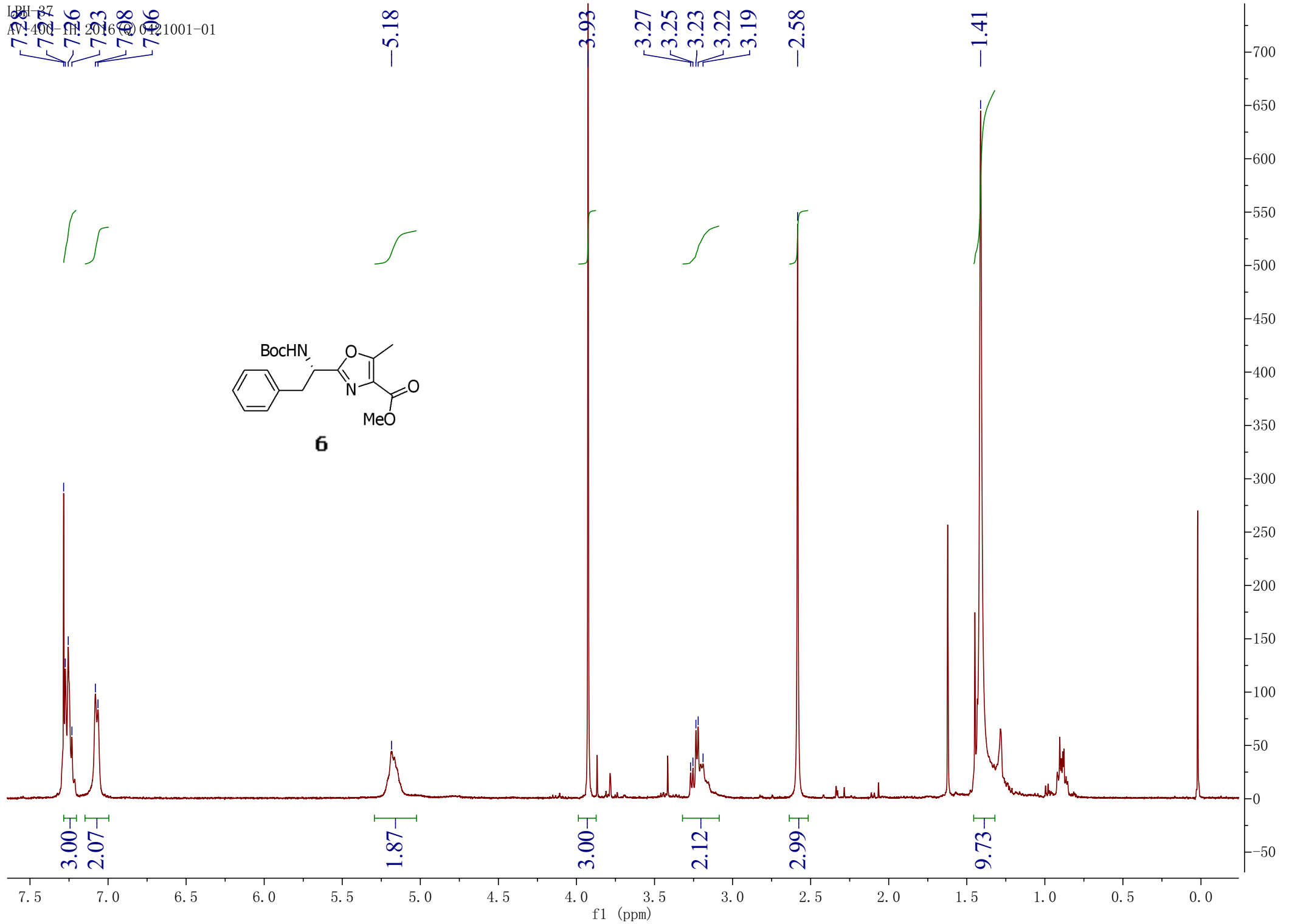
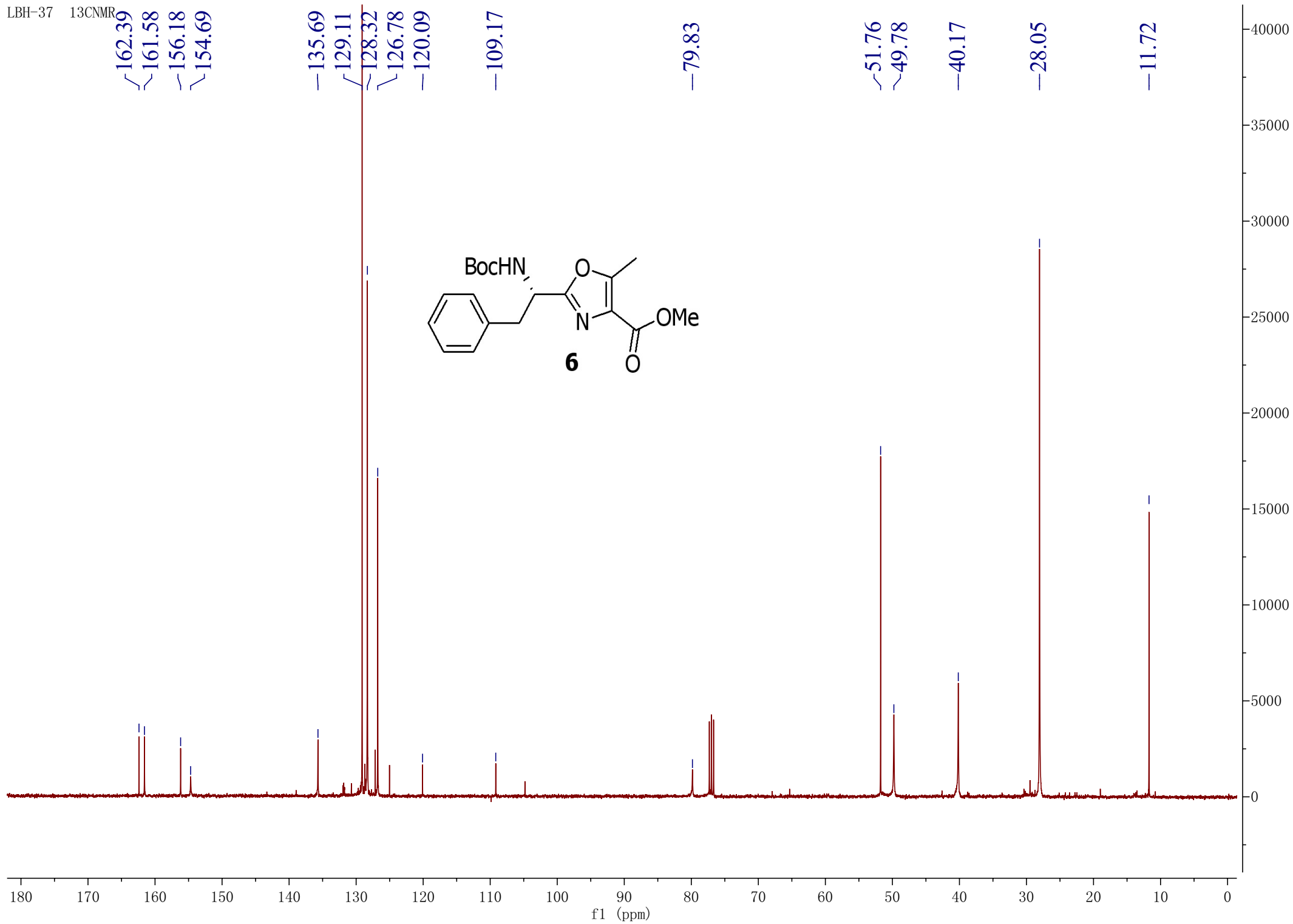
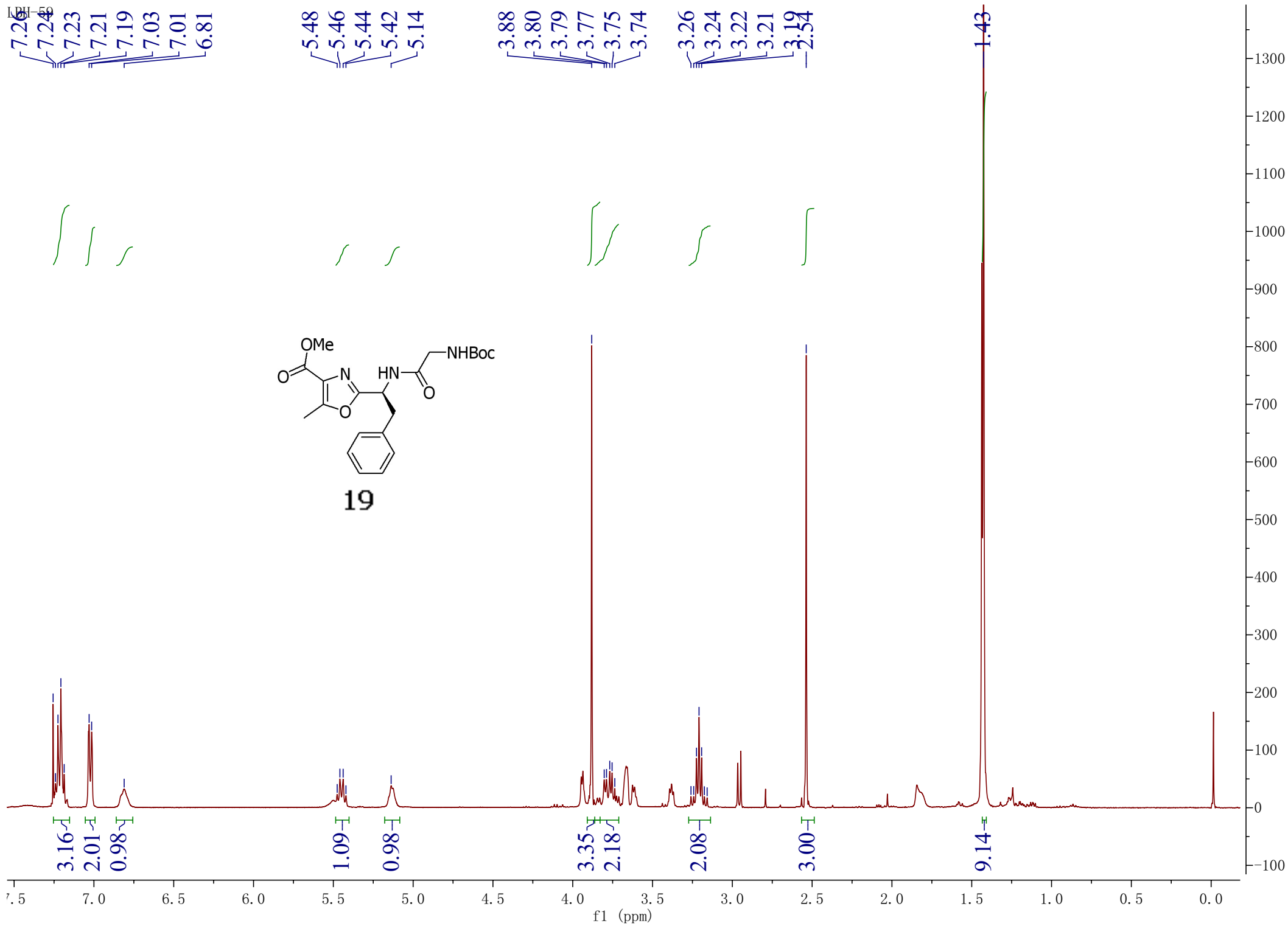


LBH-08
AV-100









LBH-59

~169.00
~162.43
~161.16
~156.43

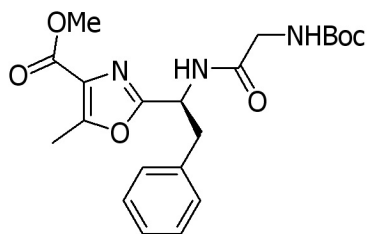
~135.43
~129.14
~128.56
~127.35
~127.10

~66.67
~66.28

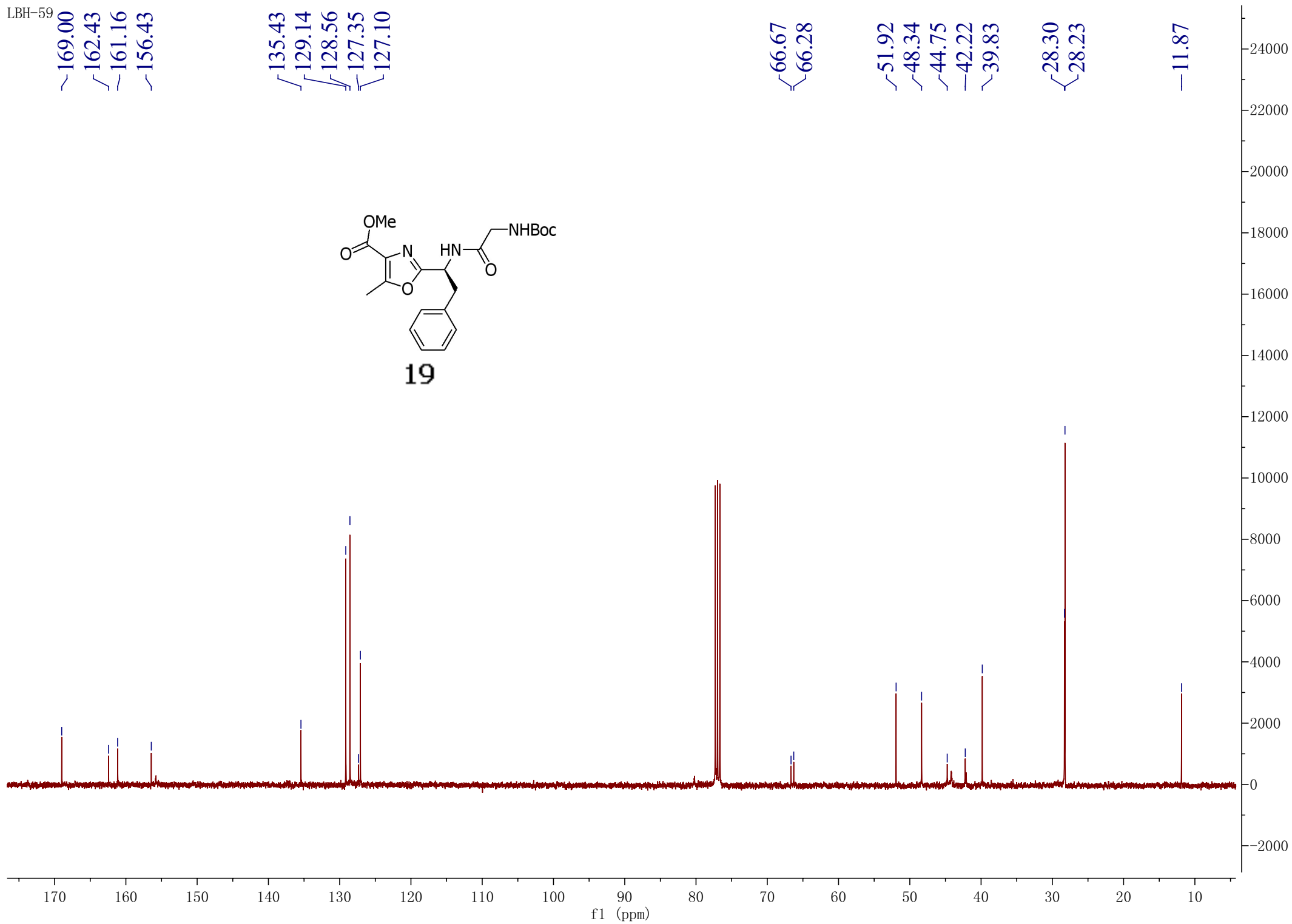
~51.92
~48.34
~44.75
~42.22
~39.83

~28.30
~28.23

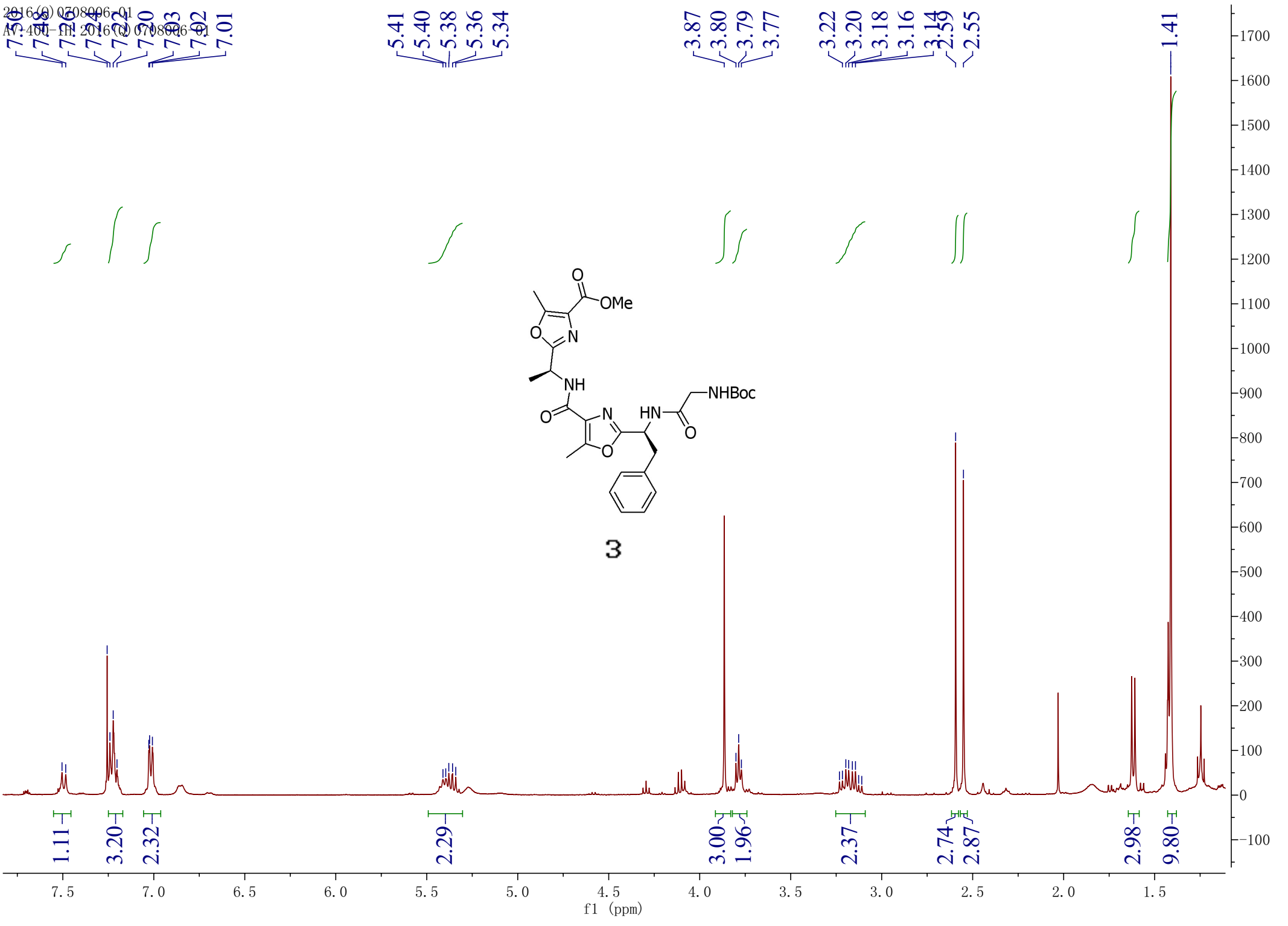
~11.87

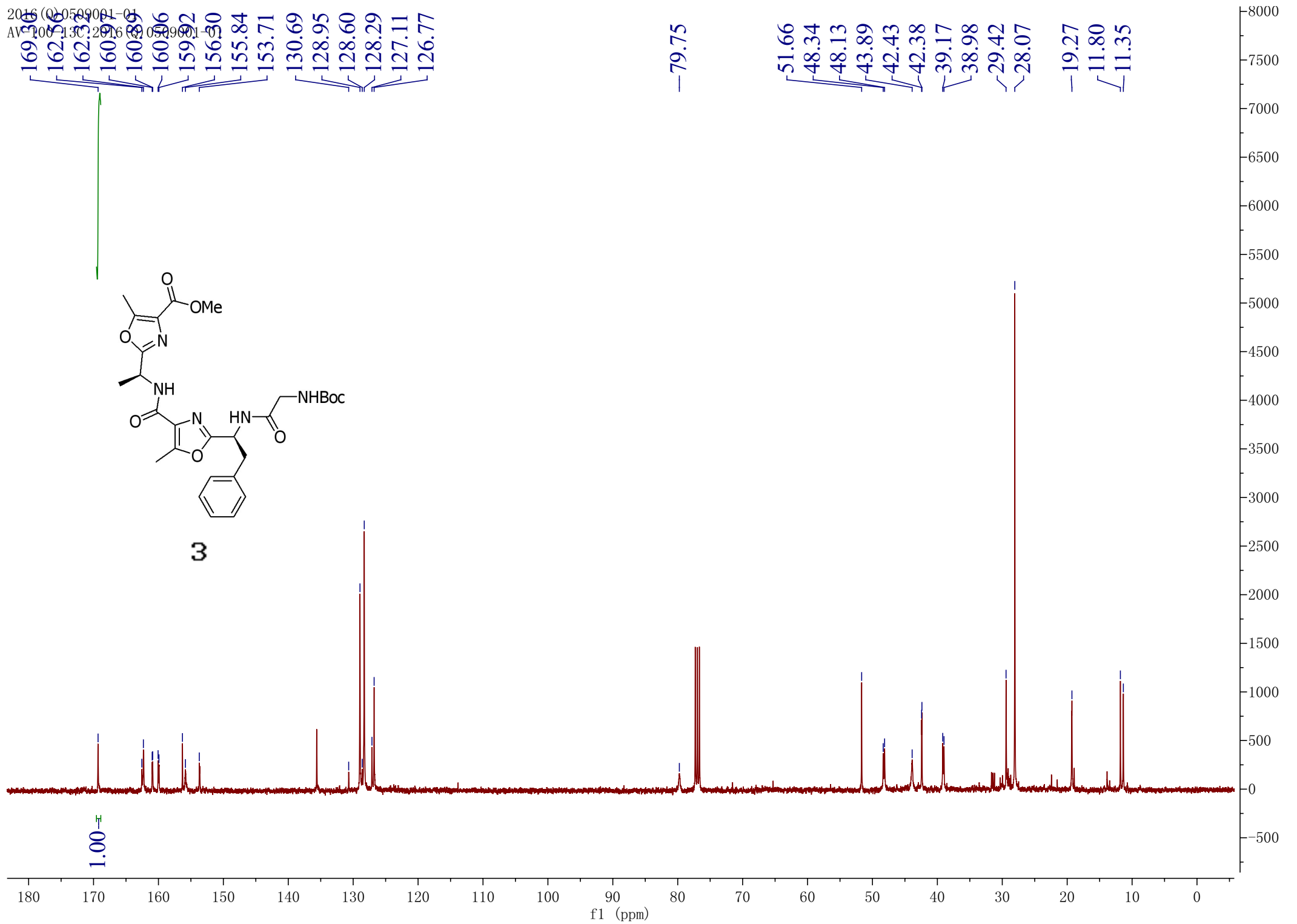


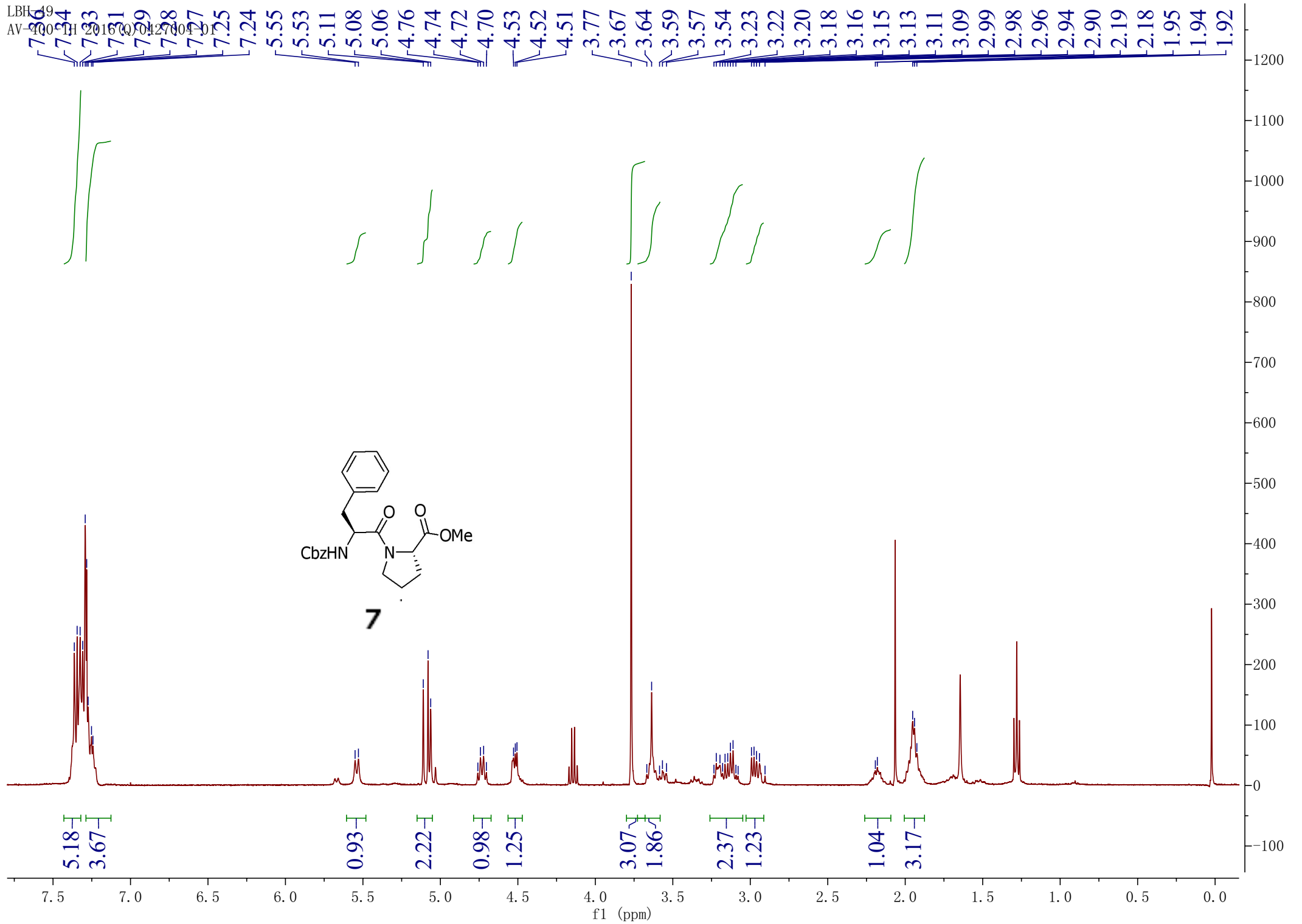
19

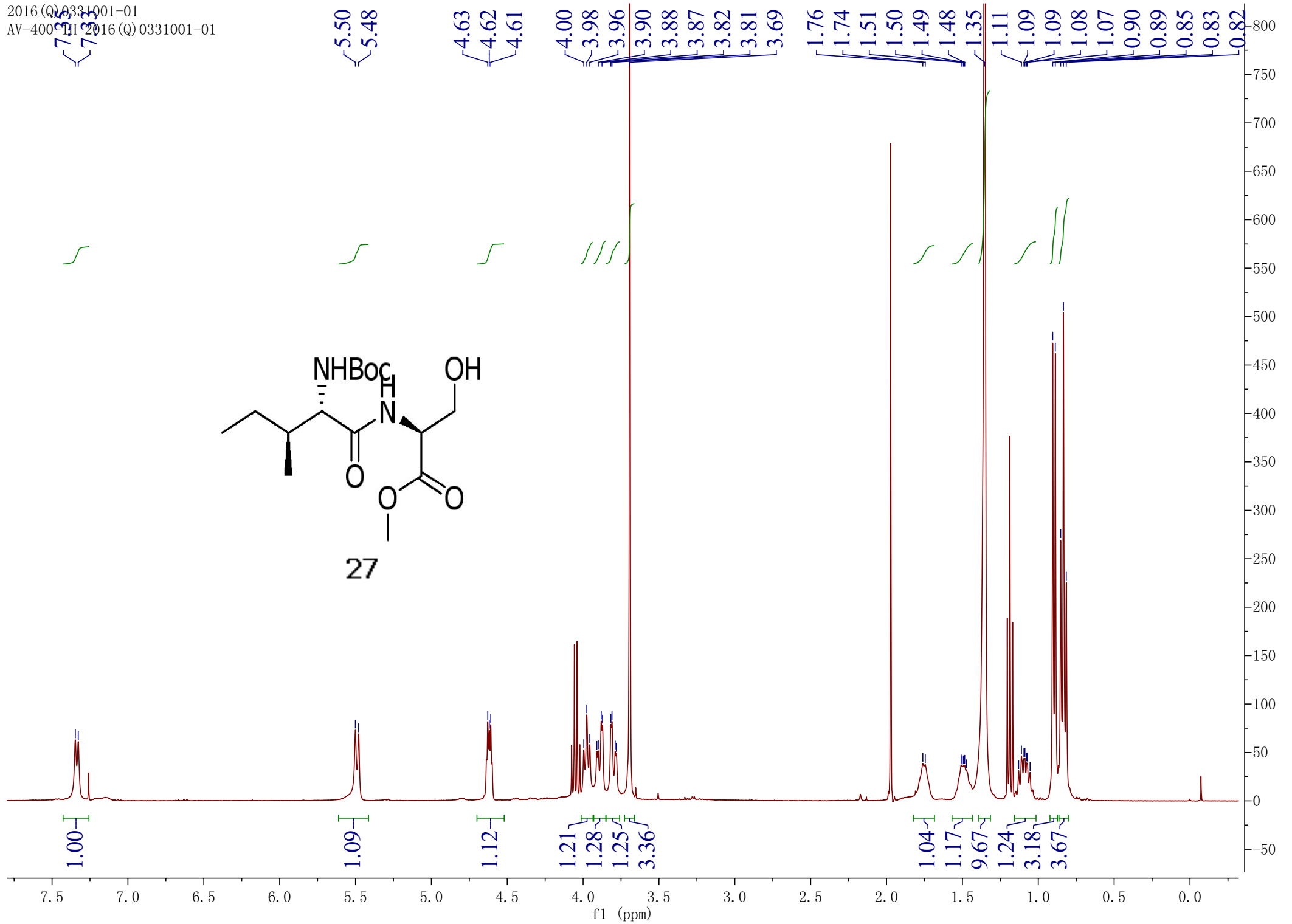


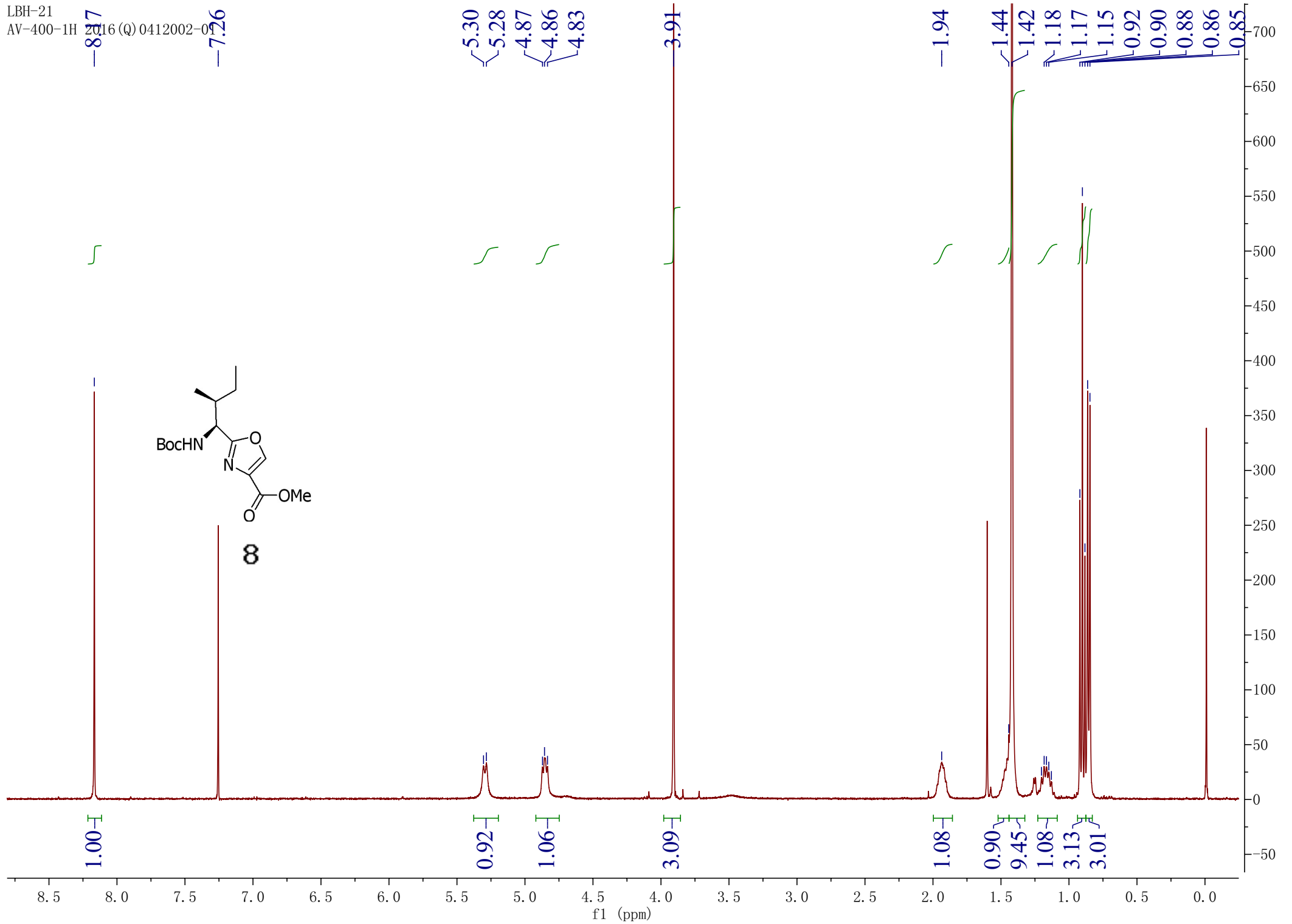
2016-07-08 09:06-01
AV: 400 MHz, 2016-07-08 09:06-01











164.89
161.33
155.02

143.61
132.94

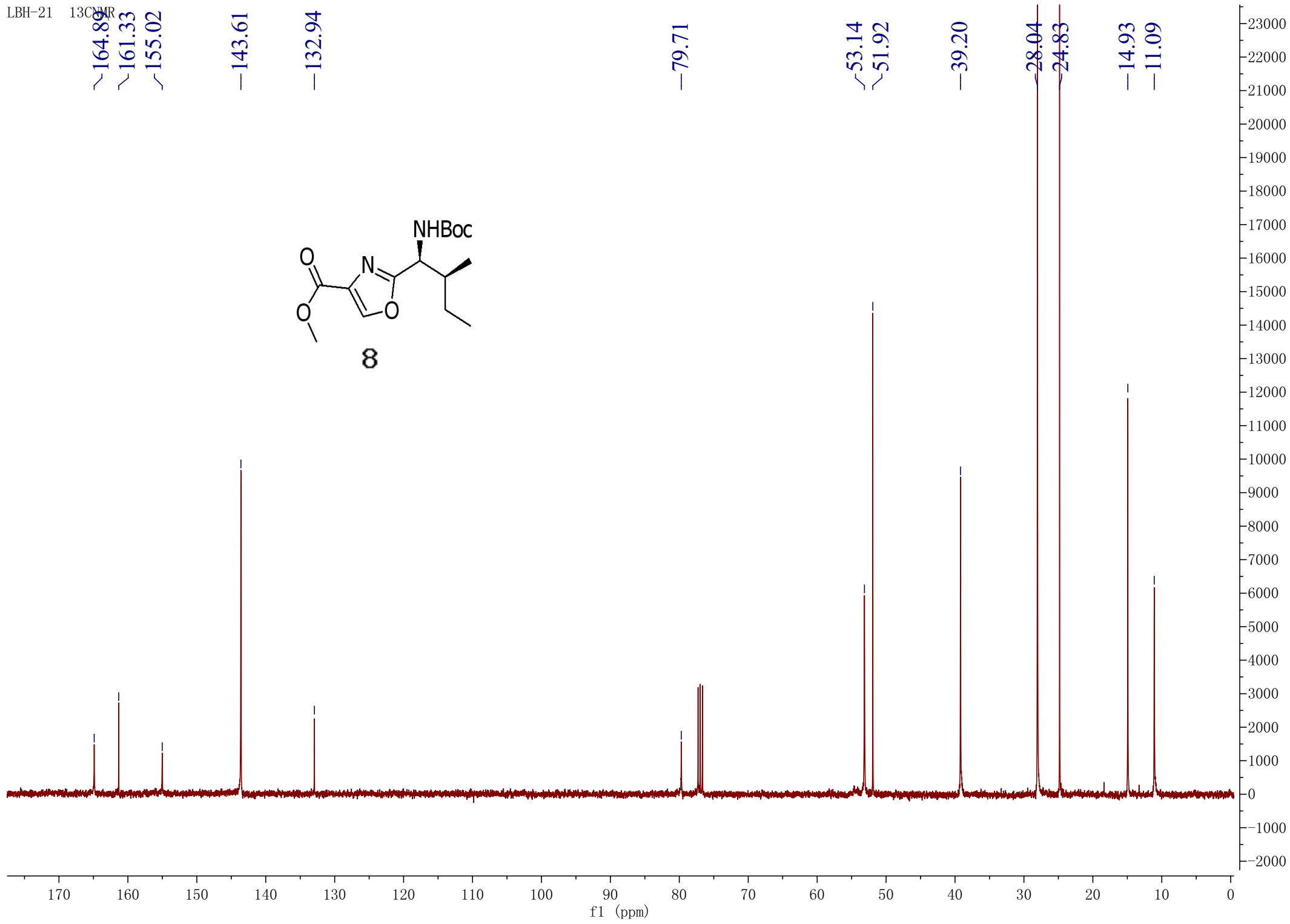
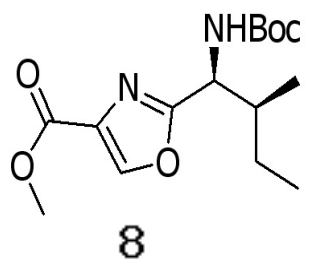
79.71

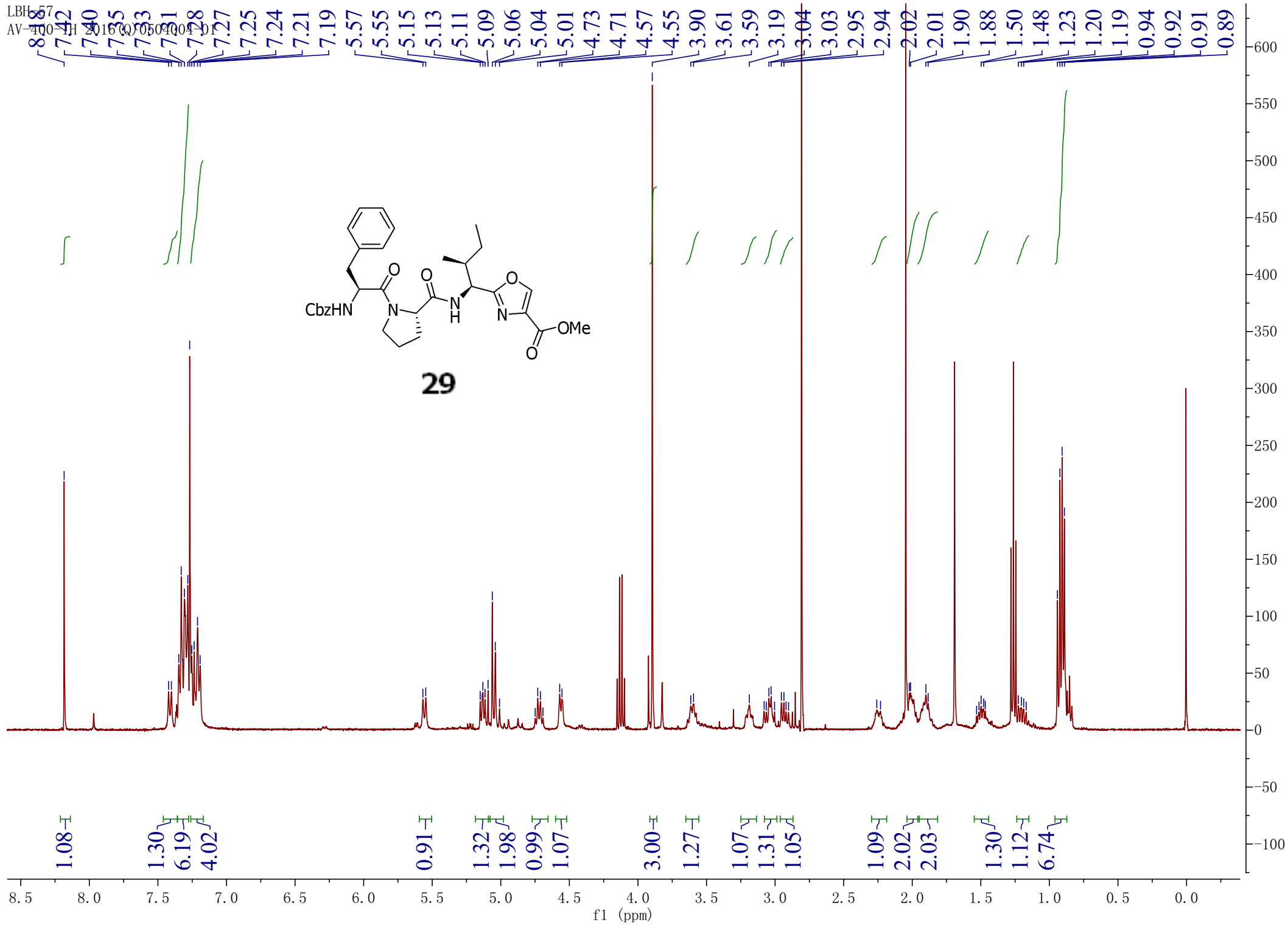
53.14
51.92

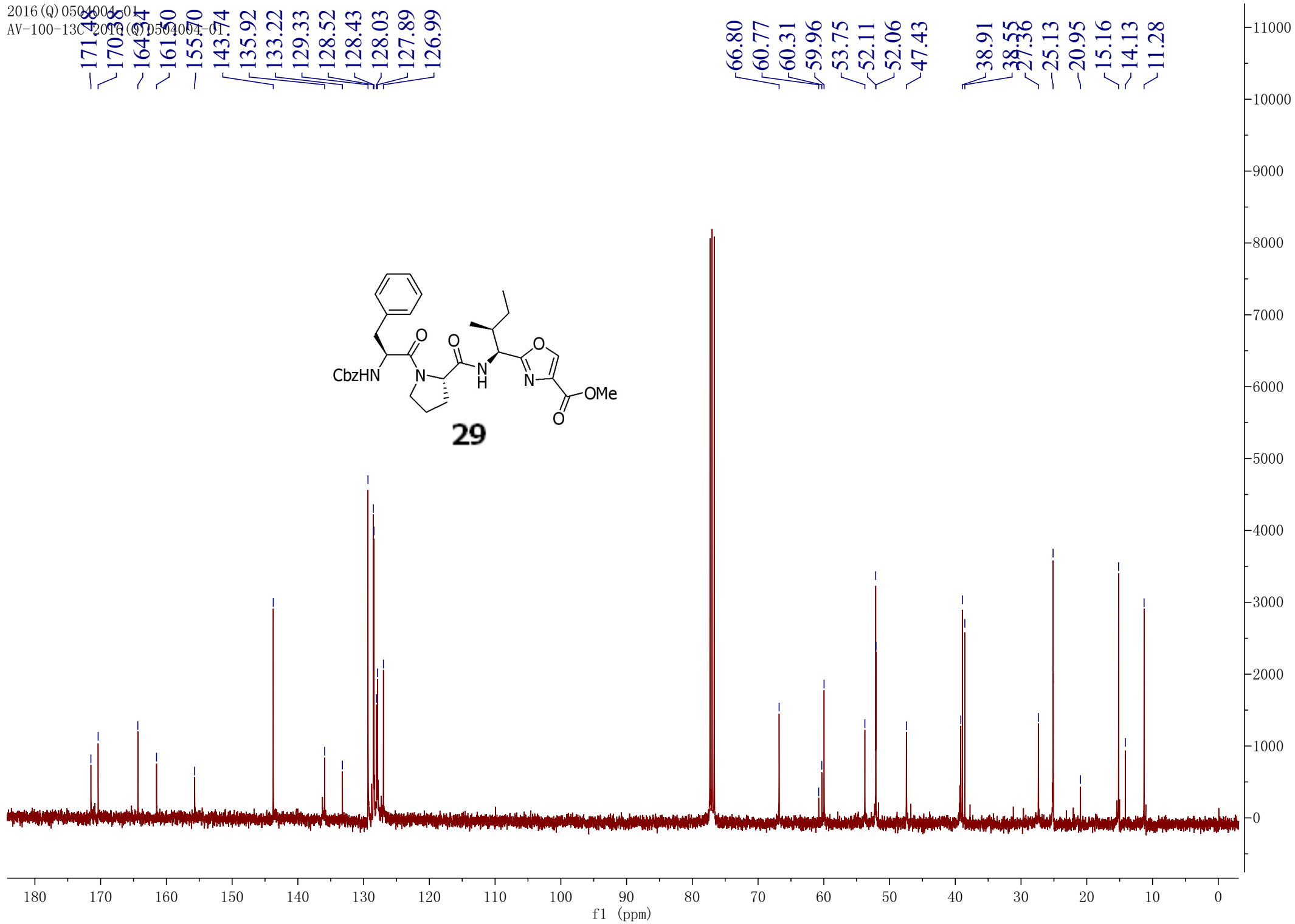
39.20

28.04
24.83

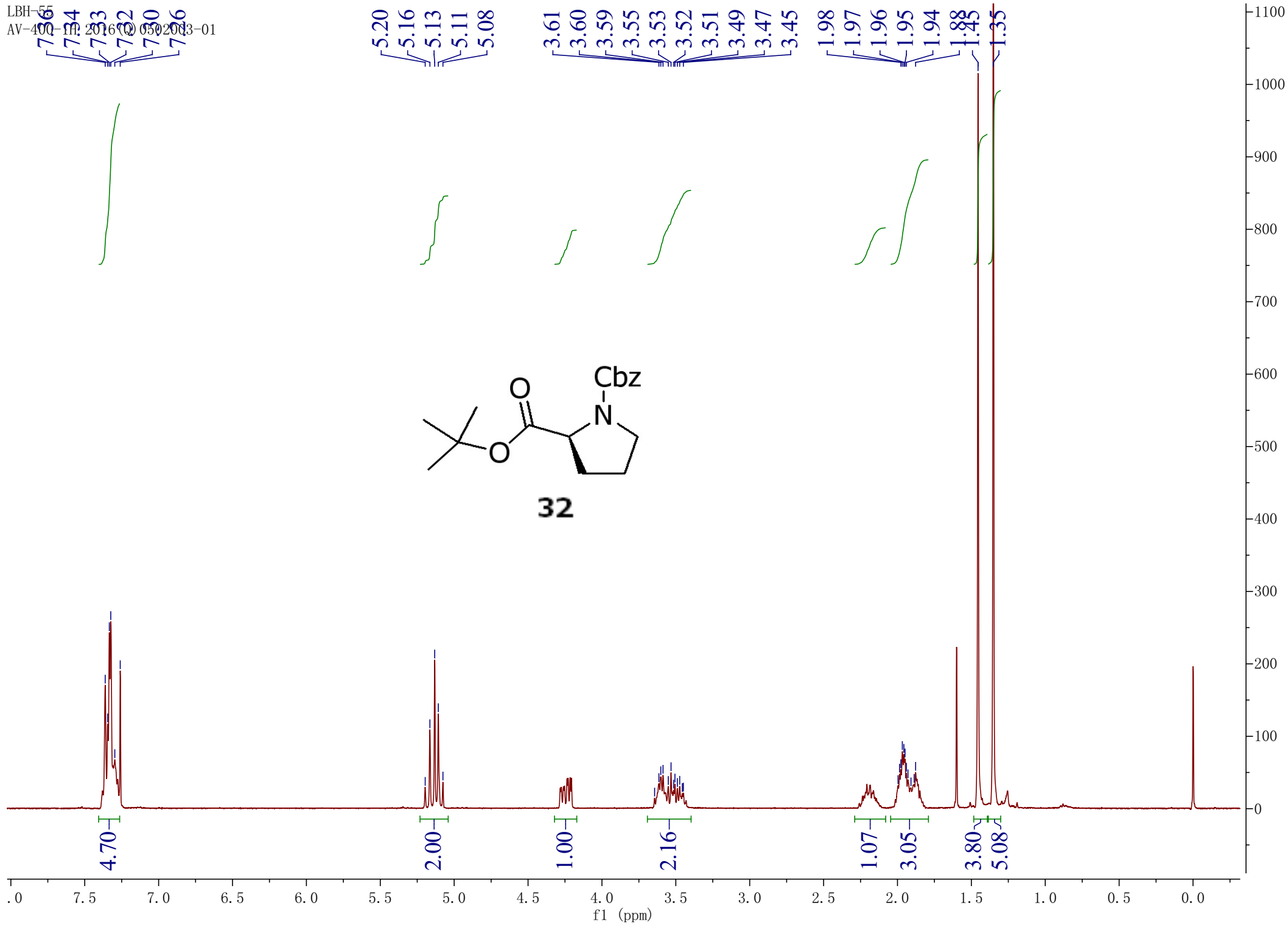
14.93
11.09

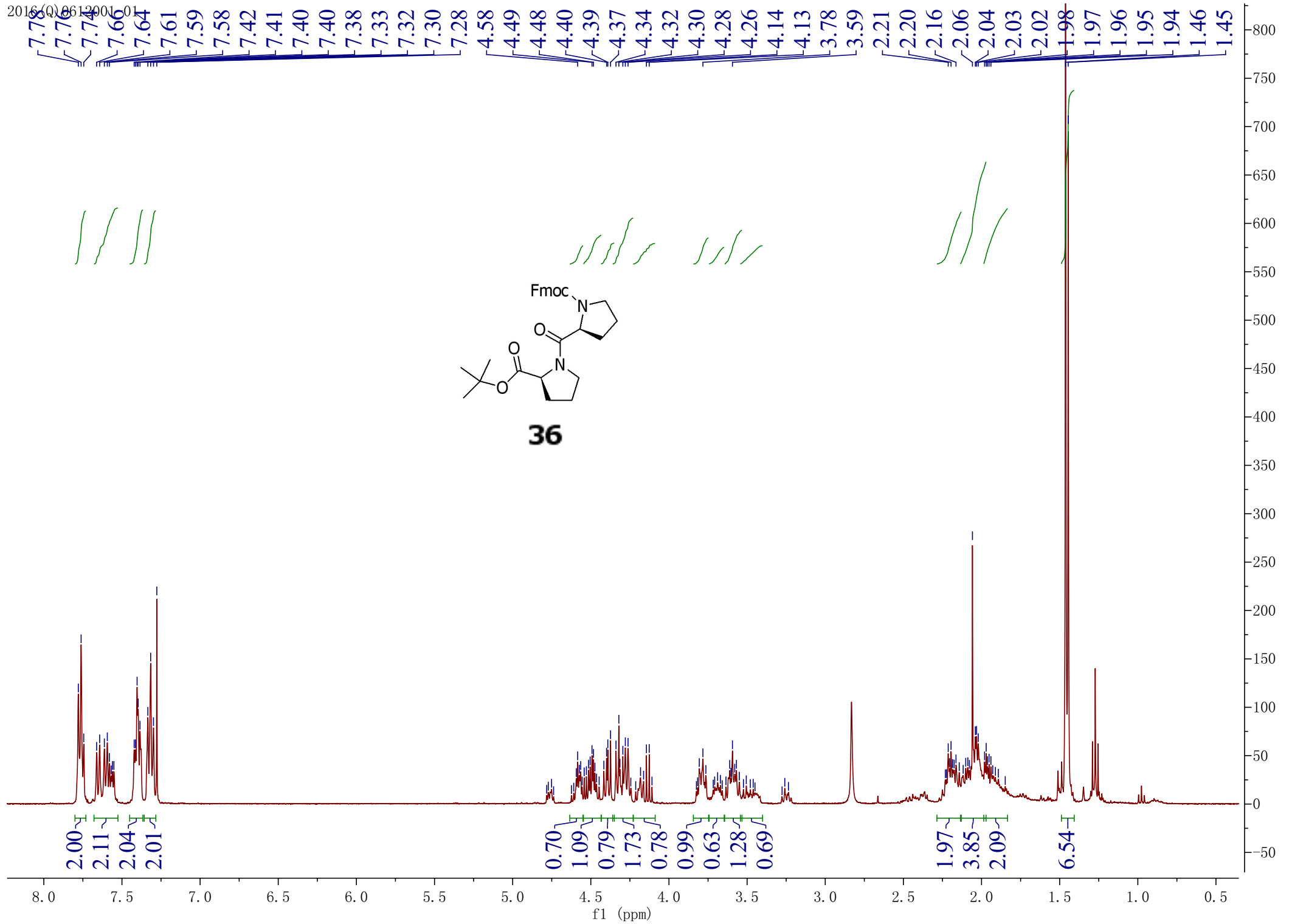


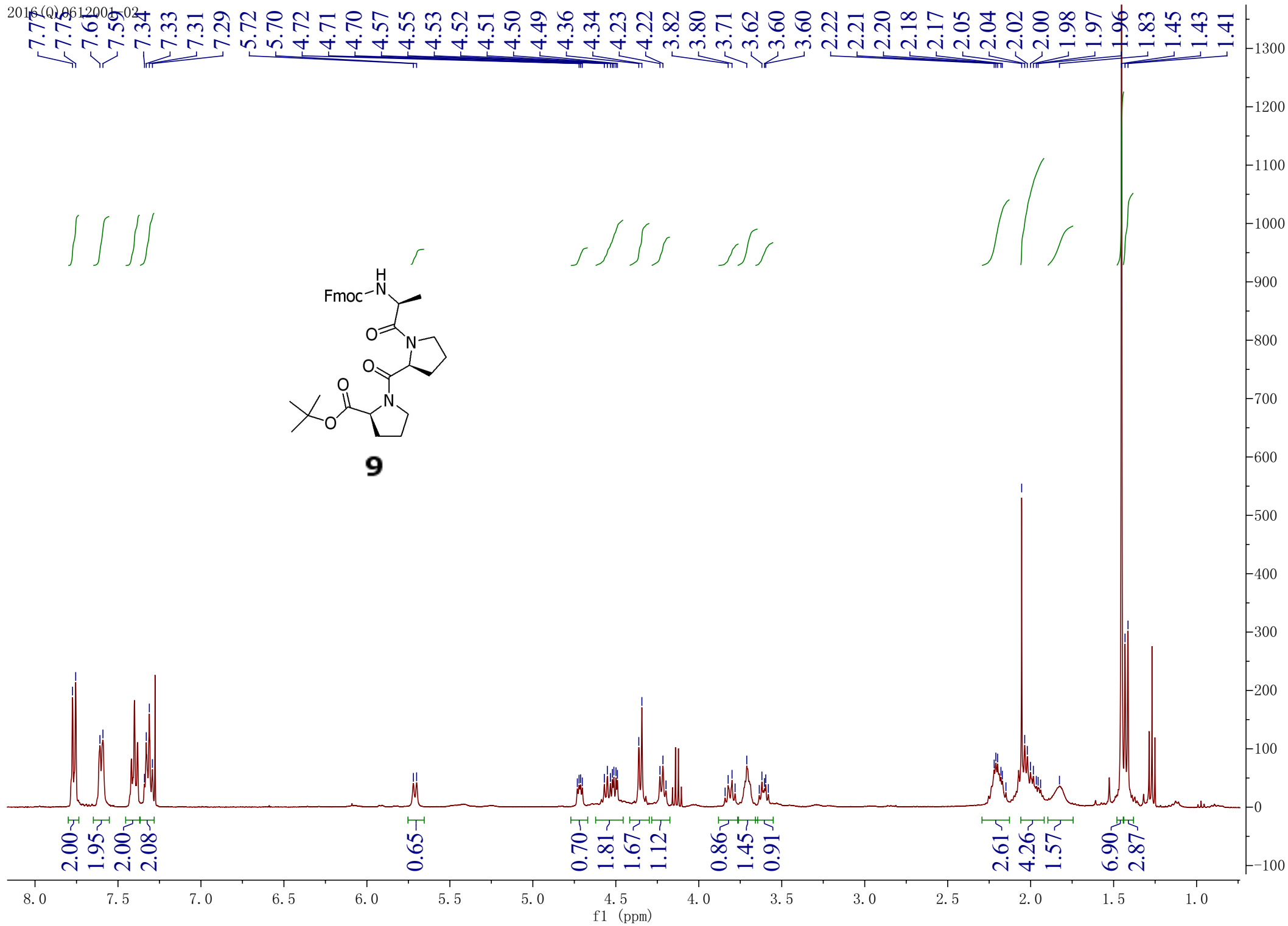


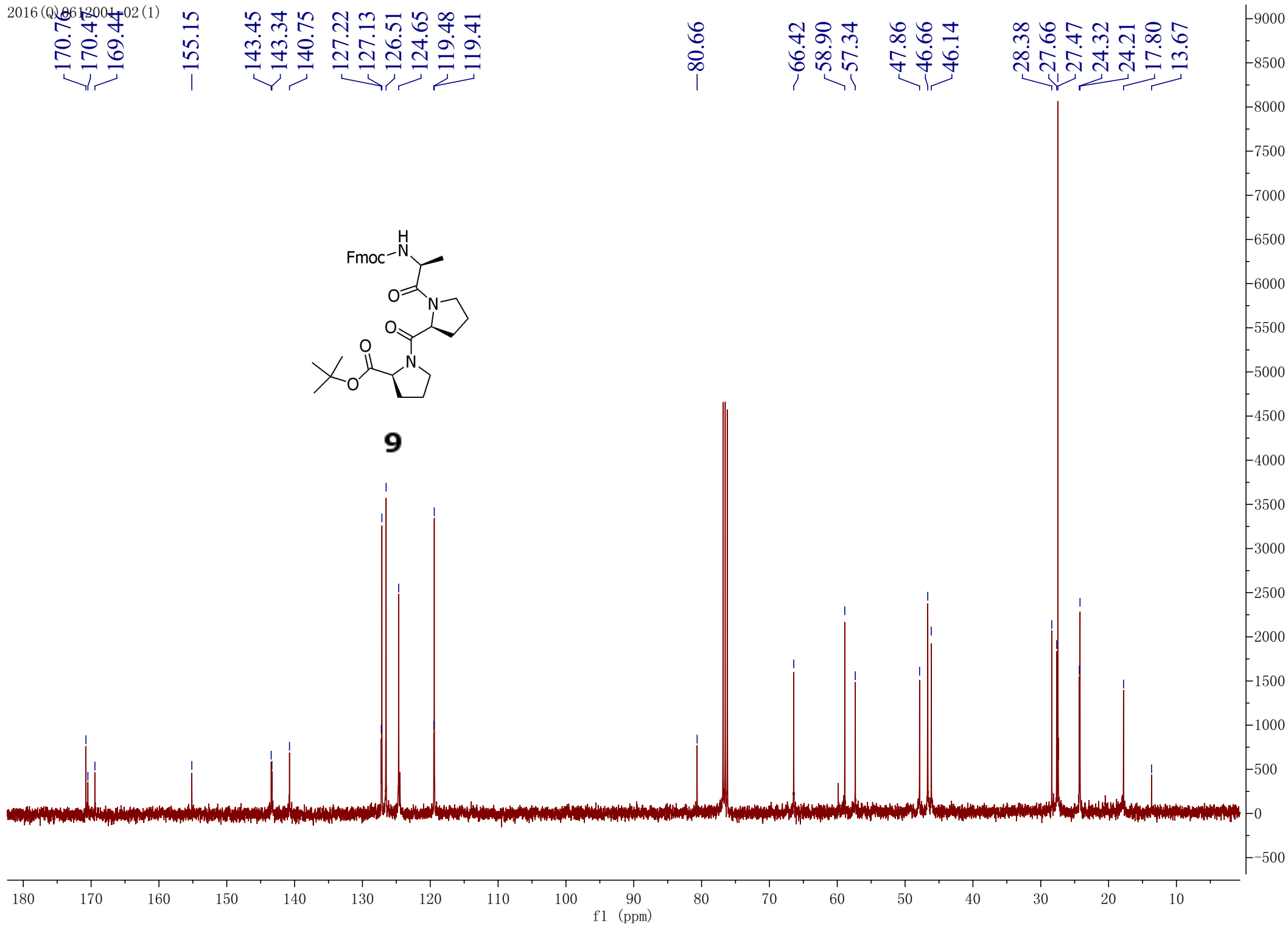


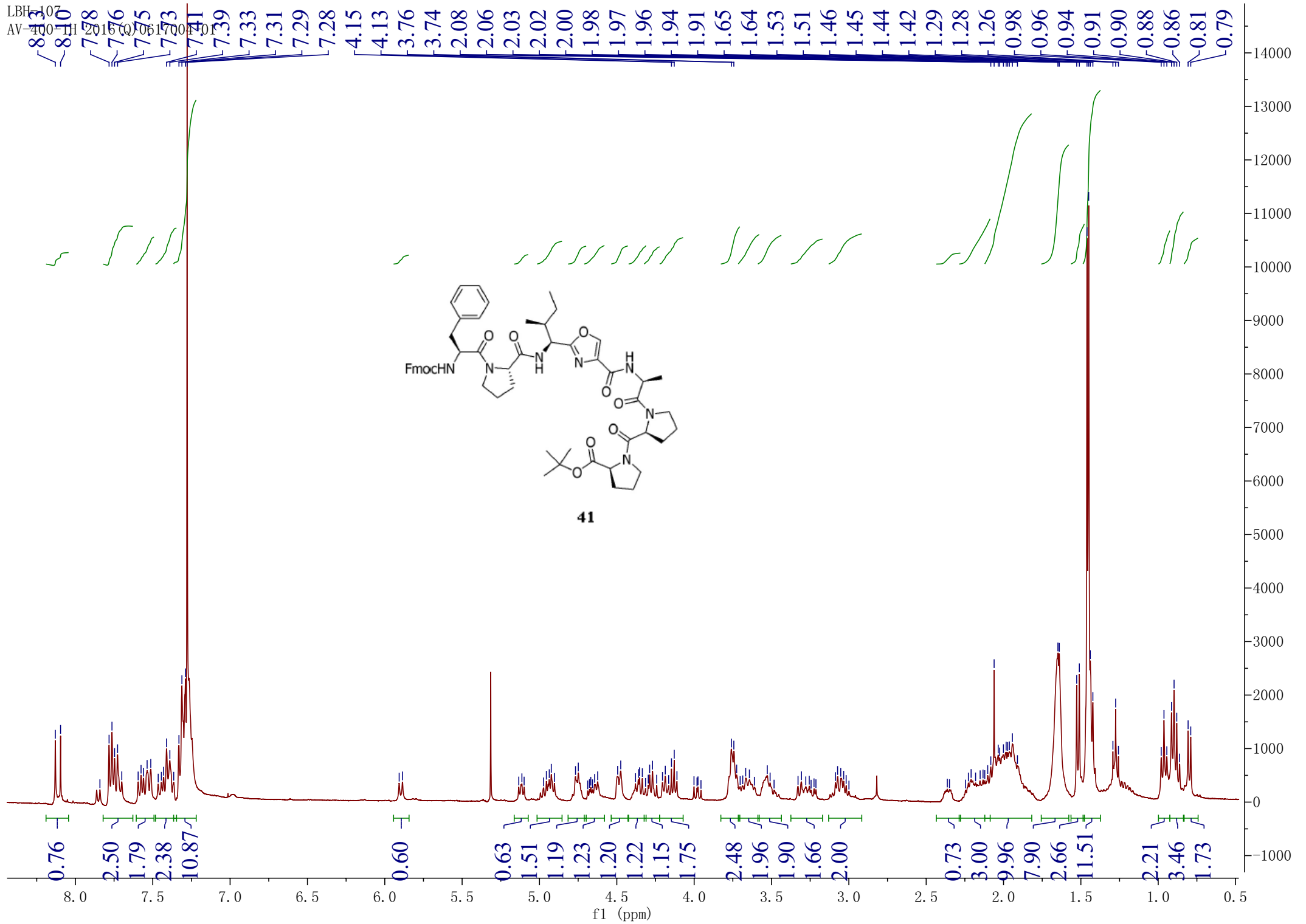
LBH-55
AV-400-1H, 2016 © 0502003-01







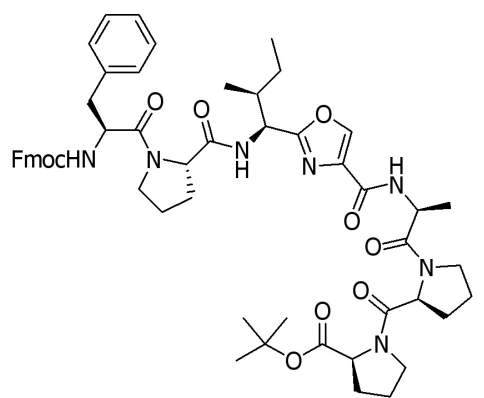
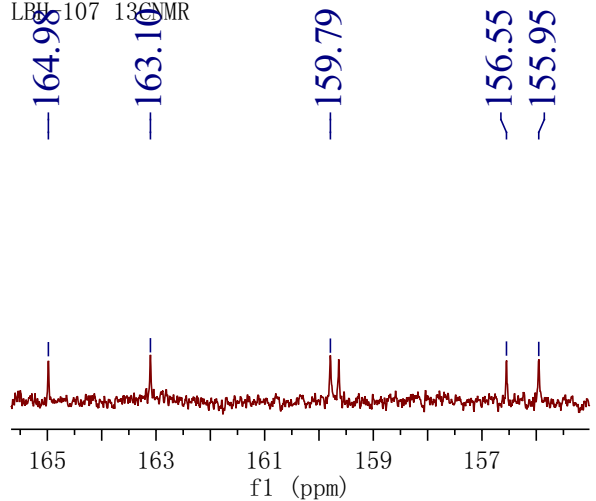




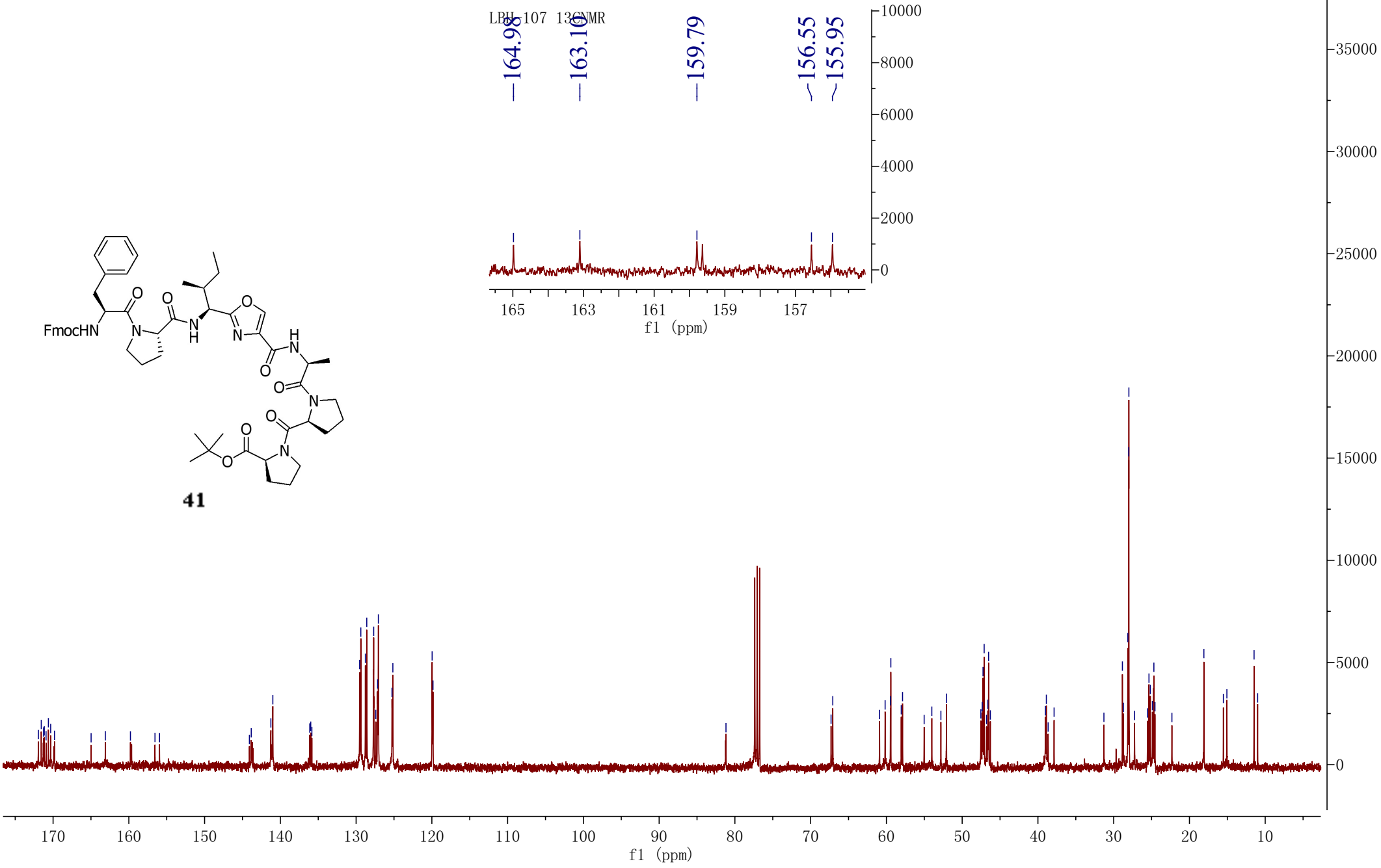
LBH-107-13C NMR



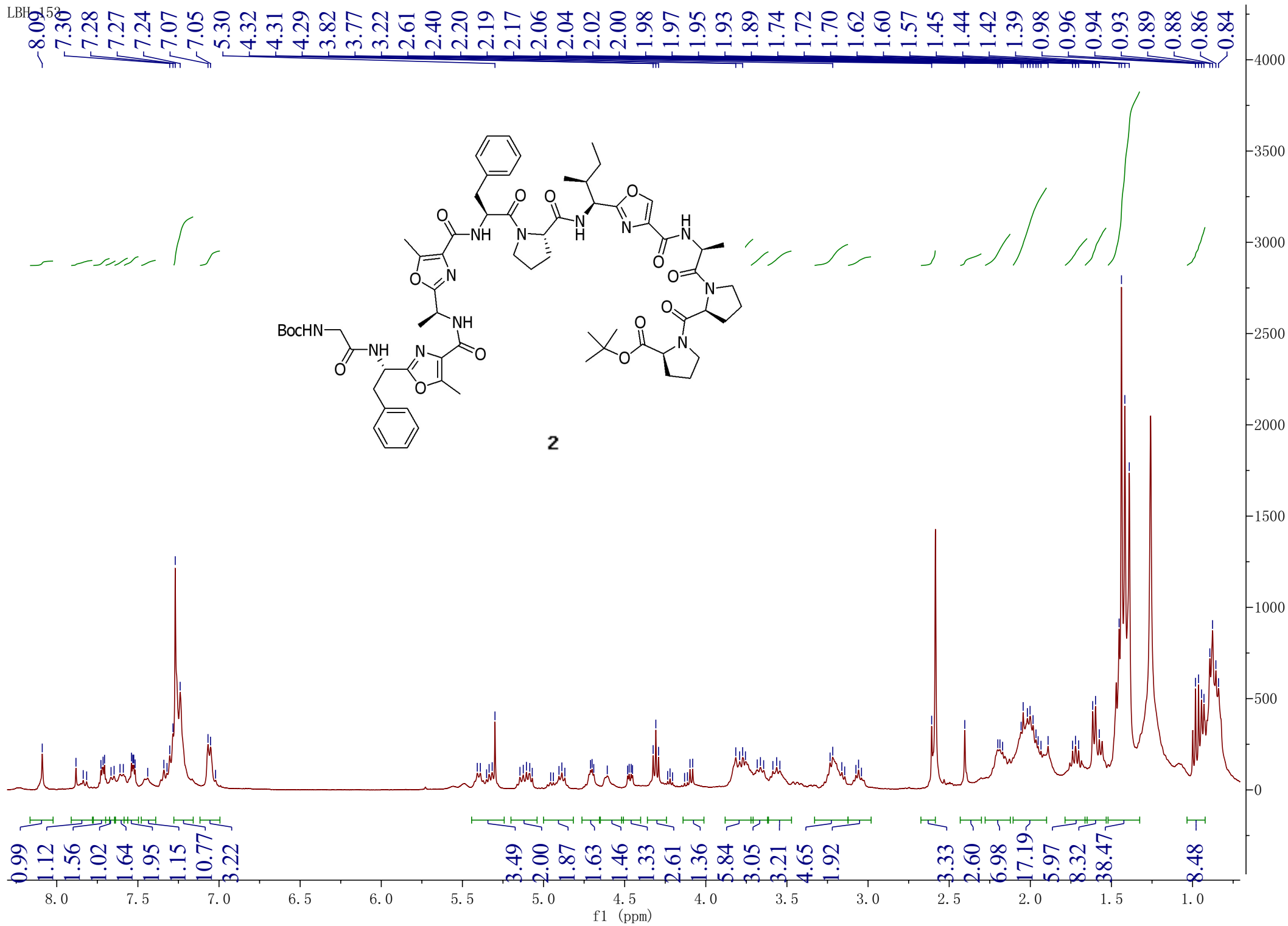
LBH-107-13C NMR



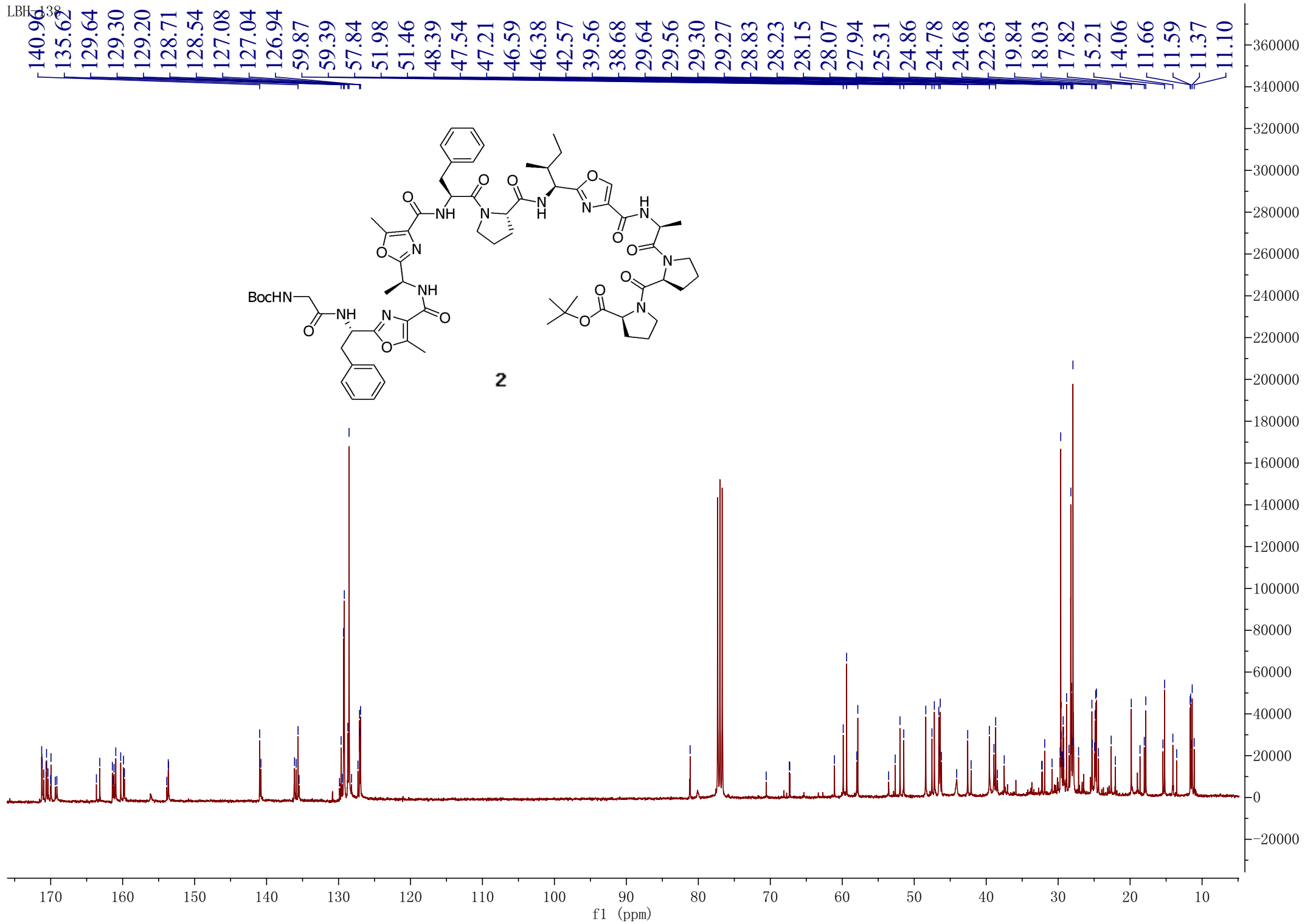
41



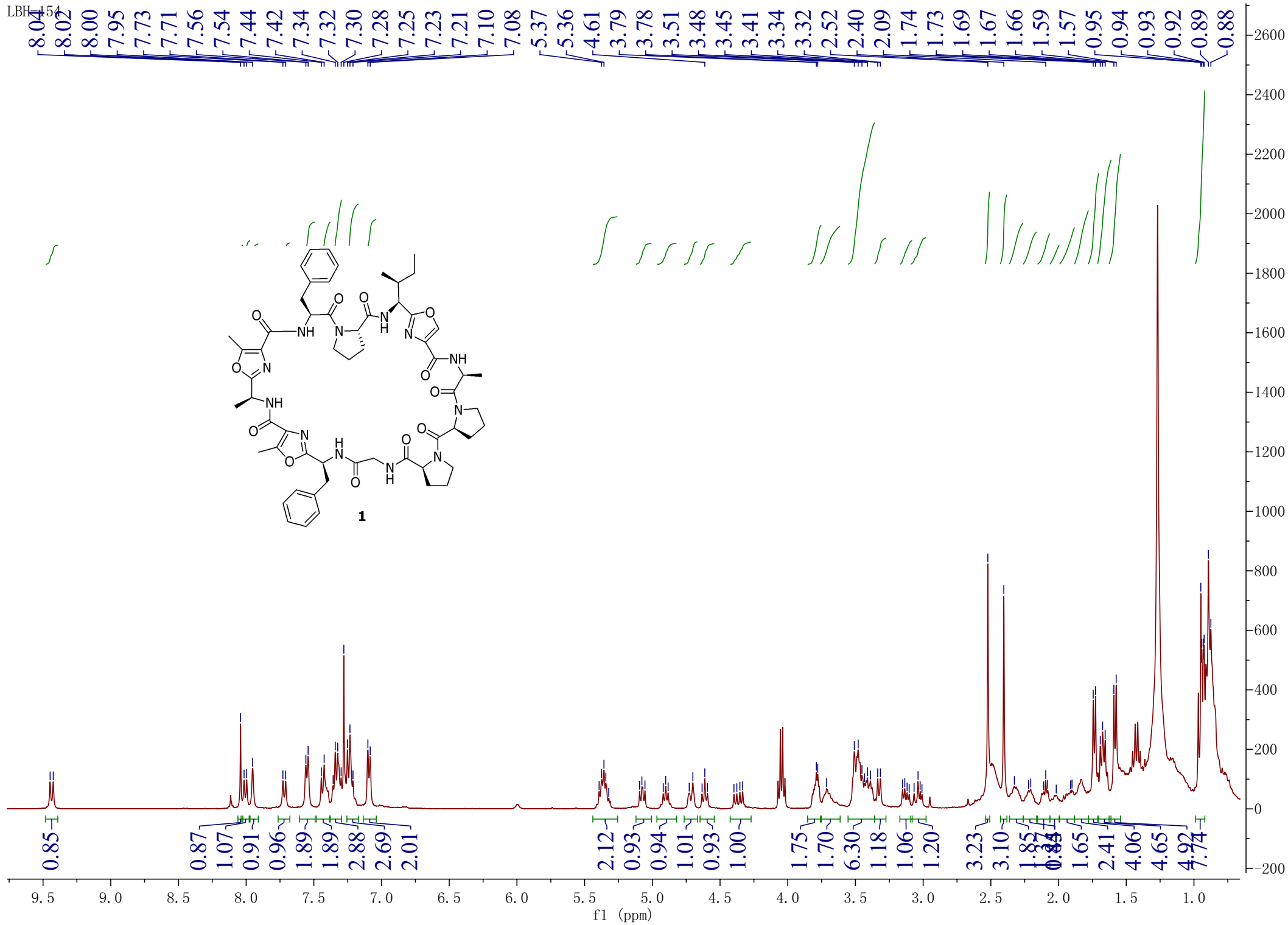
LBH-153

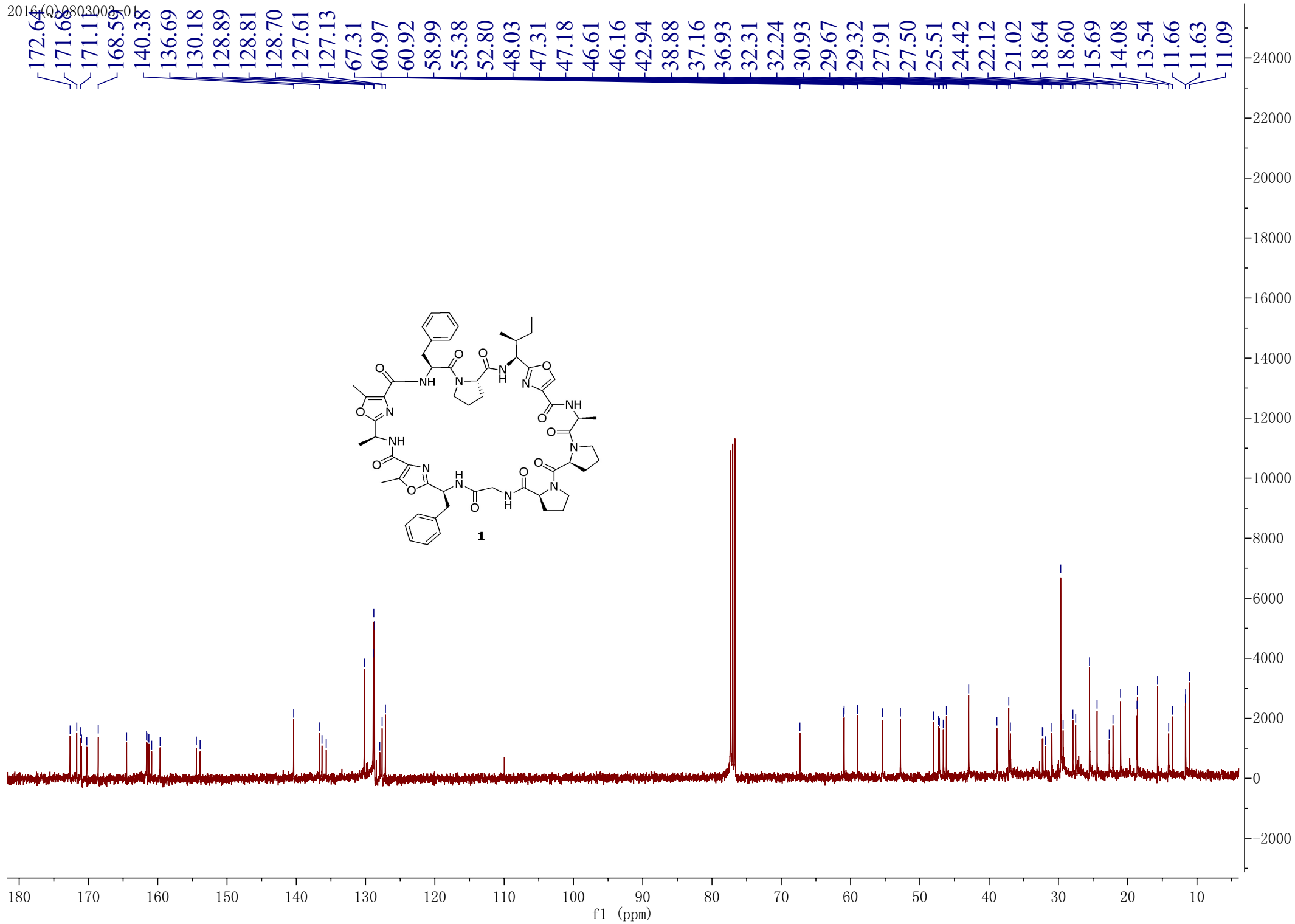


LBH-138



LBH-154





Display Report

Analysis Info

Analysis Name D:\Data\ZHL\SCP\LBH-111-04.d
Method Tune_pos_Mid.m
Sample Name XY-2
Comment

Acquisition Date 6/24/2016 3:08:29 PM

Operator RITS
Instrument maXis impact 8282001.00129

Acquisition Parameter

Source Type	ESI	Ion Polarity	Positive	Set Nebulizer	0.3 Bar
Focus	Active			Set Dry Heater	180 °C
Scan Begin	50 m/z	Set Capillary	3500 V	Set Dry Gas	4.0 l/min
Scan End	3000 m/z	Set End Plate Offset	-500 V	Set Divert Valve	Source

