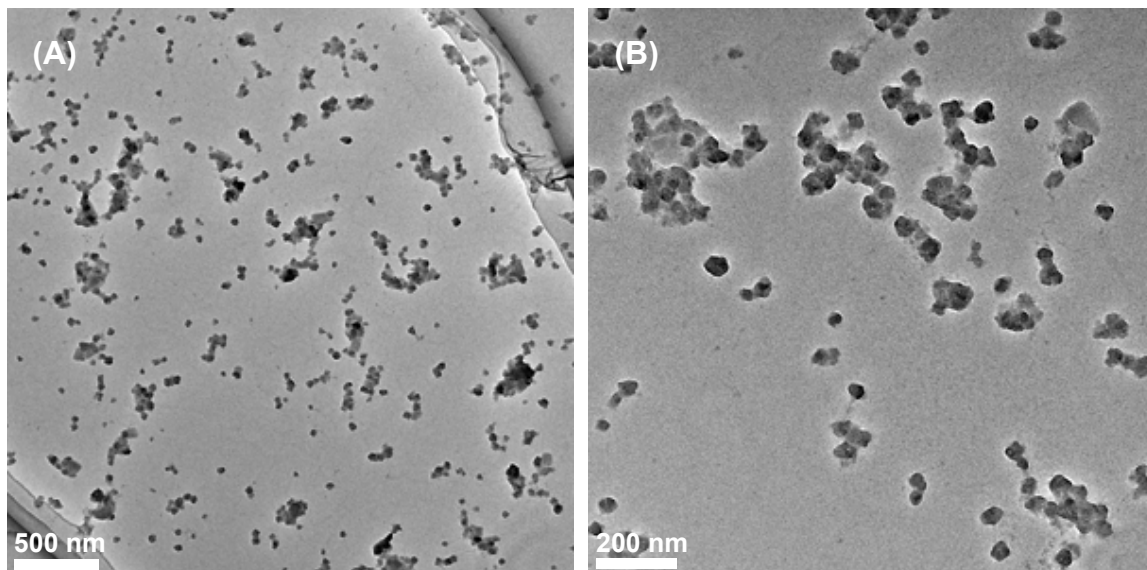


## Electronic Supplementary Information

### **Formation of $\beta$ -(1,3-1,6)-D-glucan-complexed [70]fullerene and its photodynamic activity towards macrophages**

Atsushi Ikeda,\* Motofusa Akiyama, Kouta Sugikawa, Kazuya Koumoto,  
Yuta Kashijima, Jiawei Li, Toshio Suzuki and Takeshi Nagasaki\*



**Fig. S1** TEM images of  $\beta$ -1,3-glucan-complexed C<sub>70</sub> after HSV treatment.