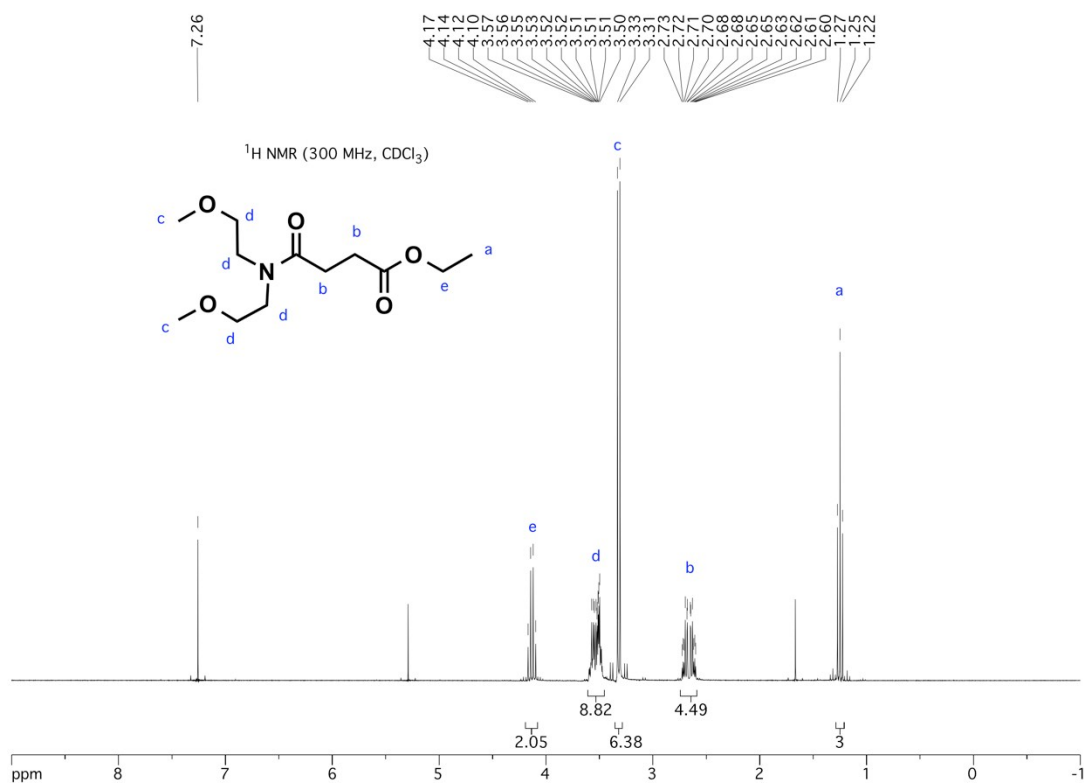
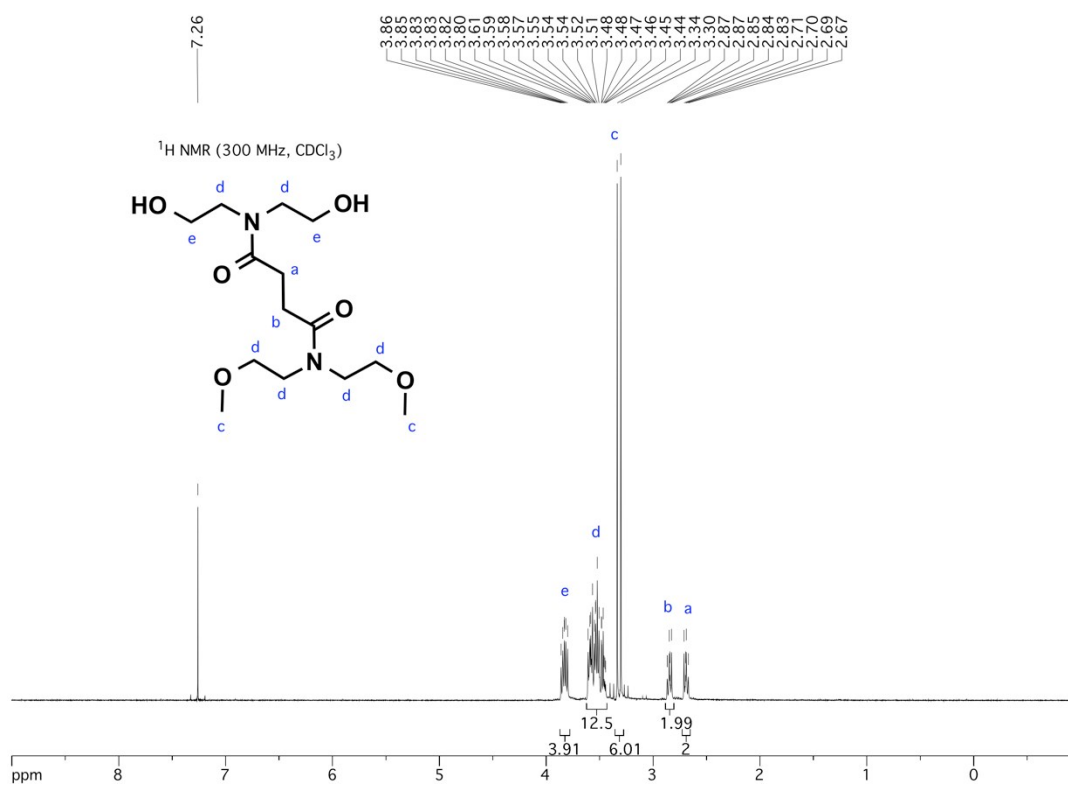
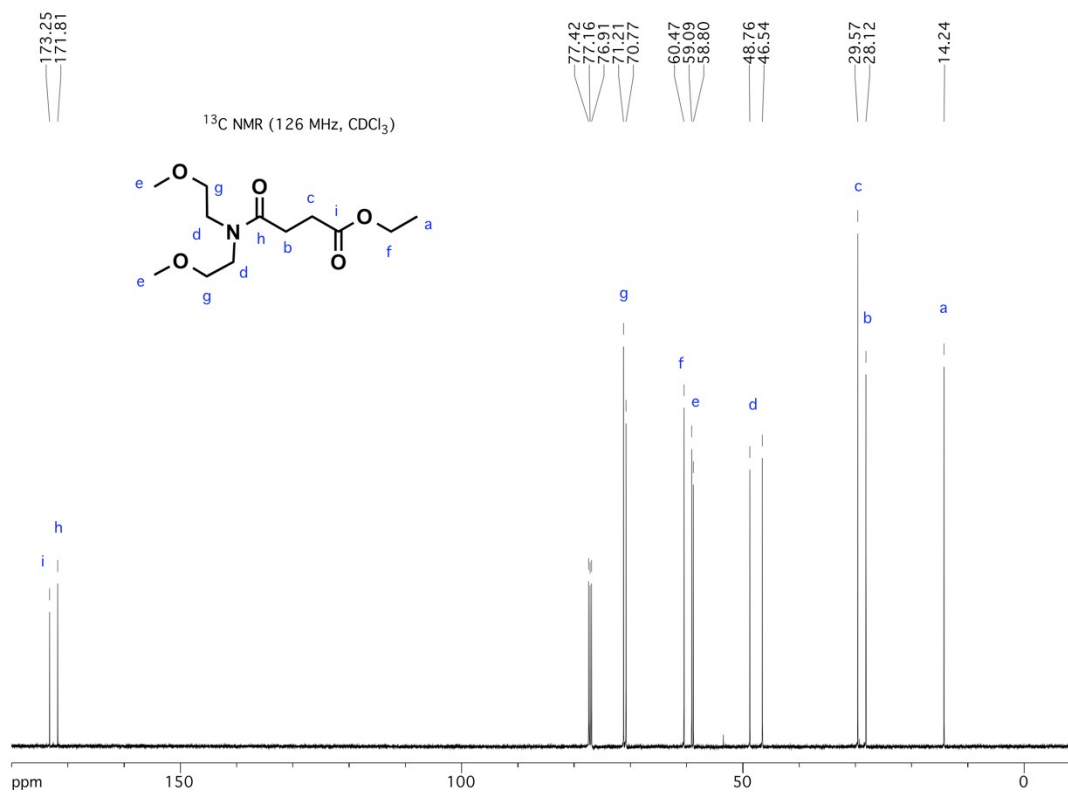


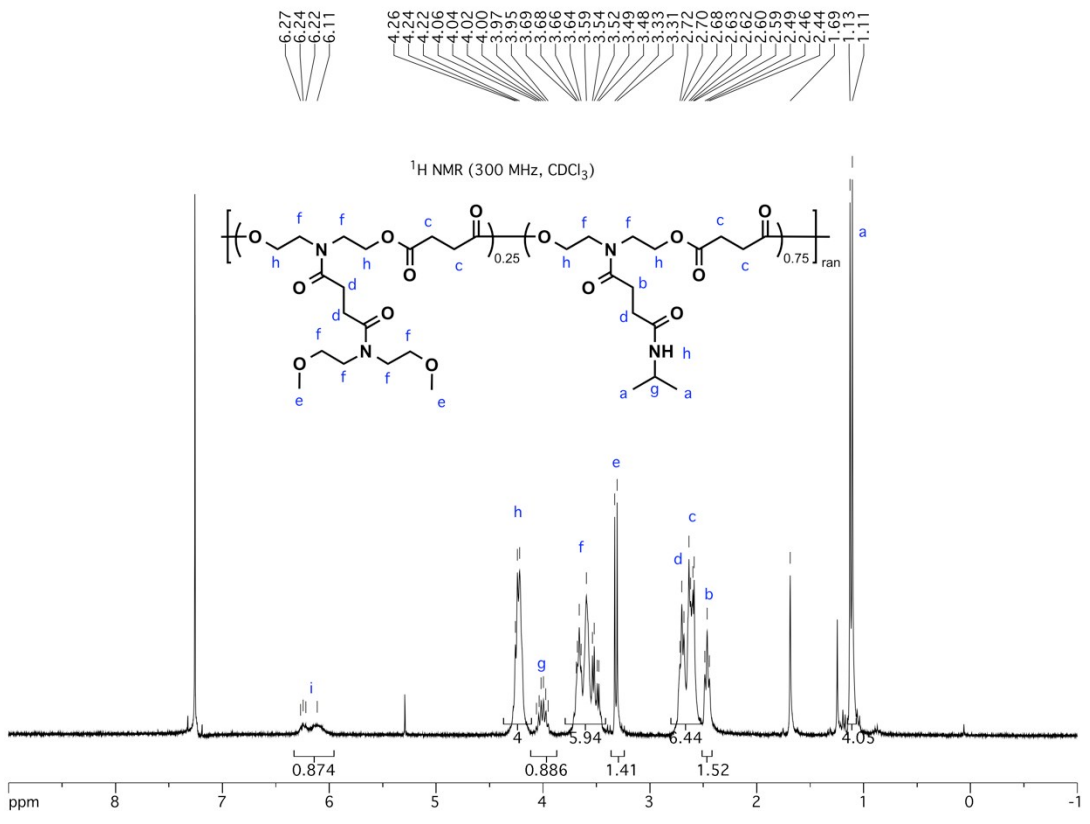
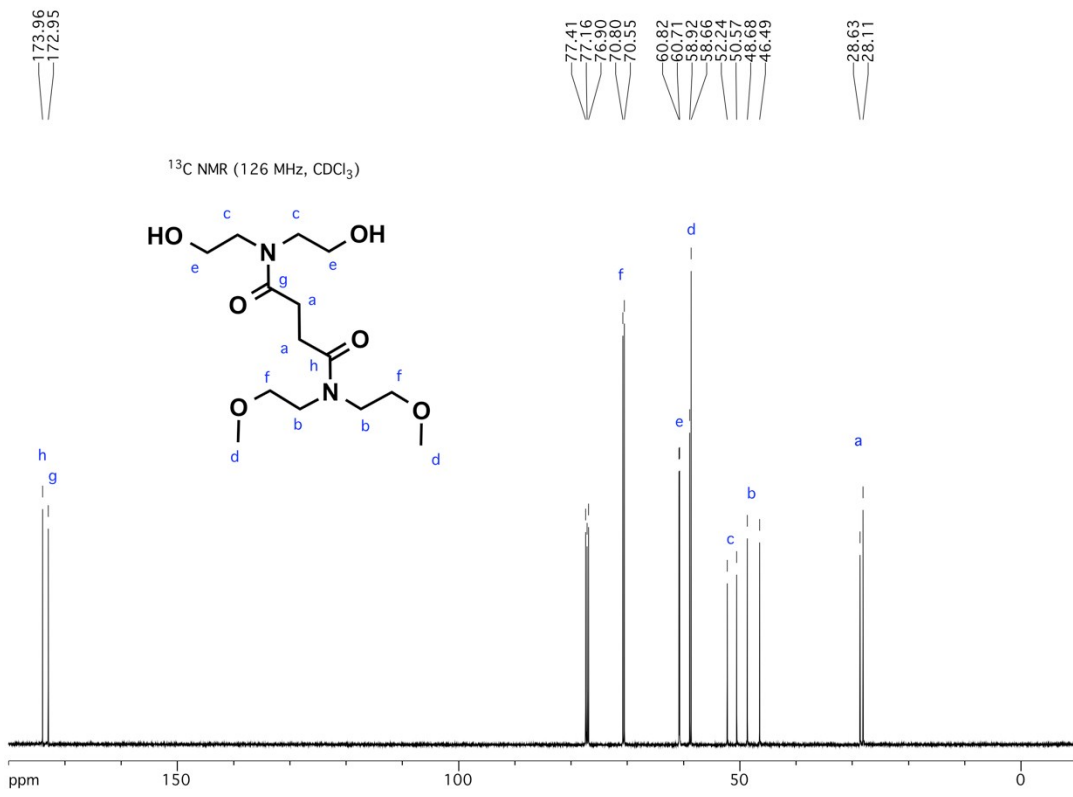
## A Coacervate-forming Biodegradable Polyester with Elevated LCST based on Bis-(2-methoxyethyl)amine: Supporting Information

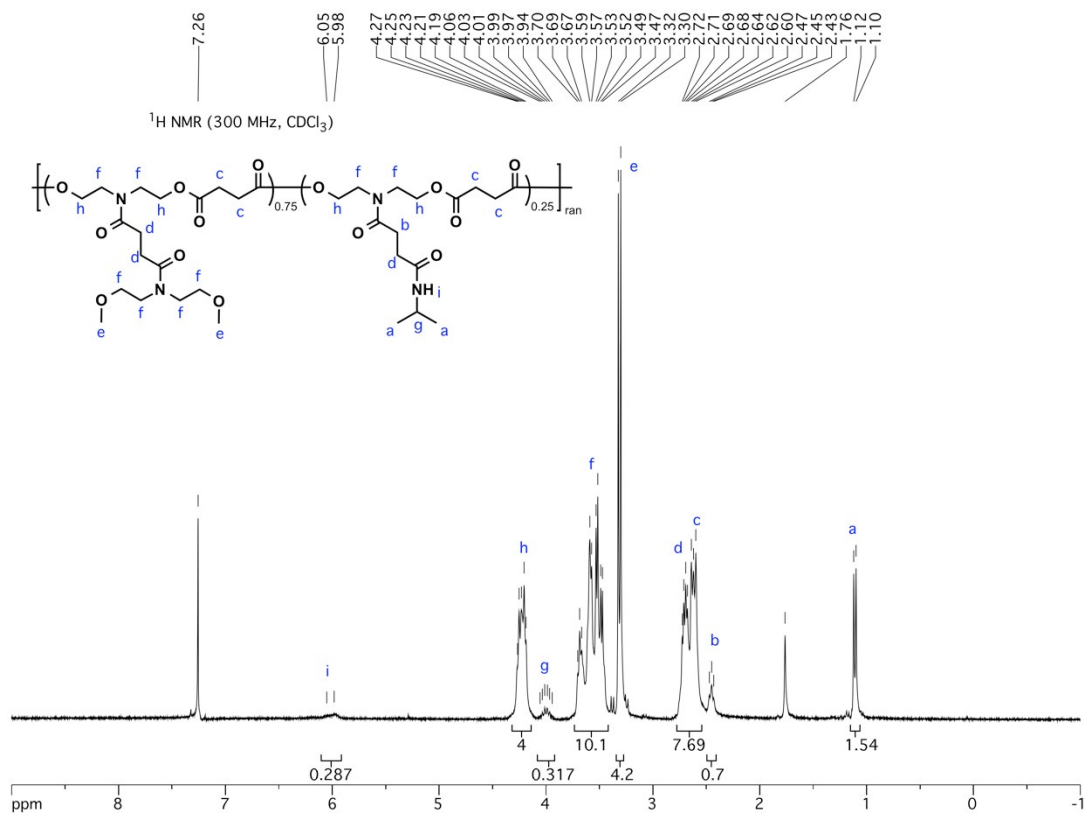
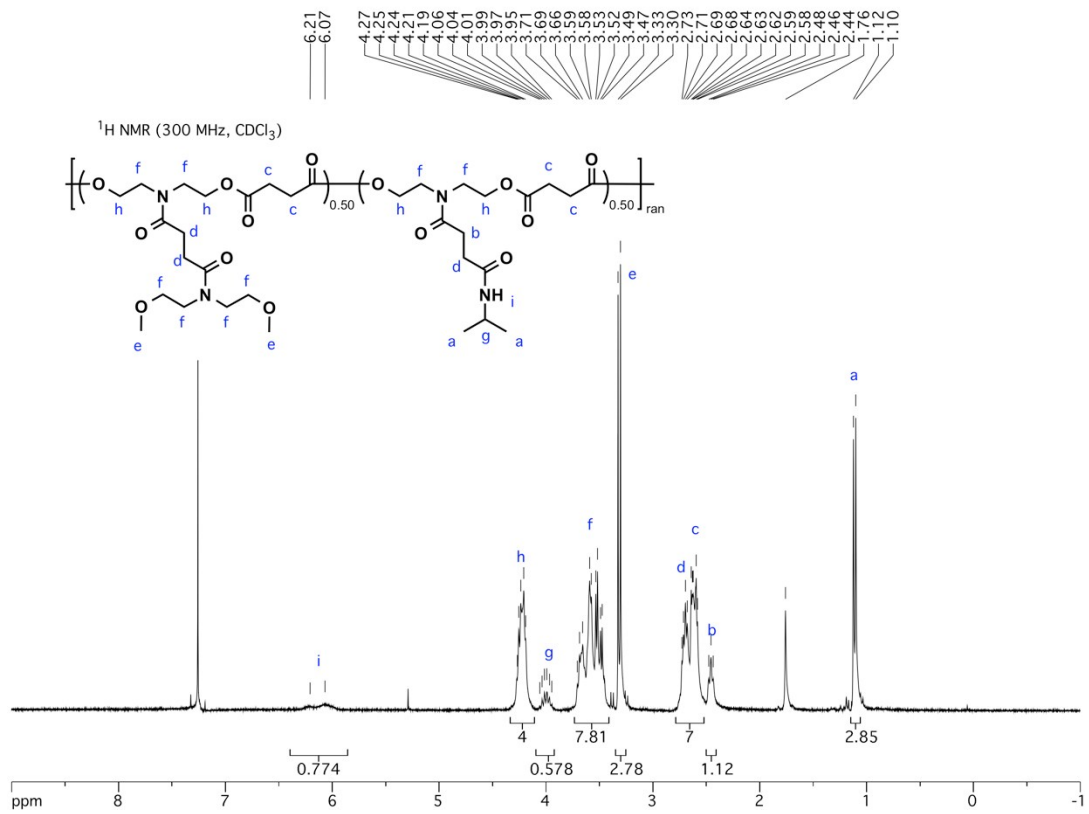
Swanson, J. P., Martinez, M. R., Cruz, M. A., Mankoci, S. G., Costanzo, P. J., Joy, A.

### I. NMR Spectra of Monomers and Polymers









## II. SEC degradation analysis

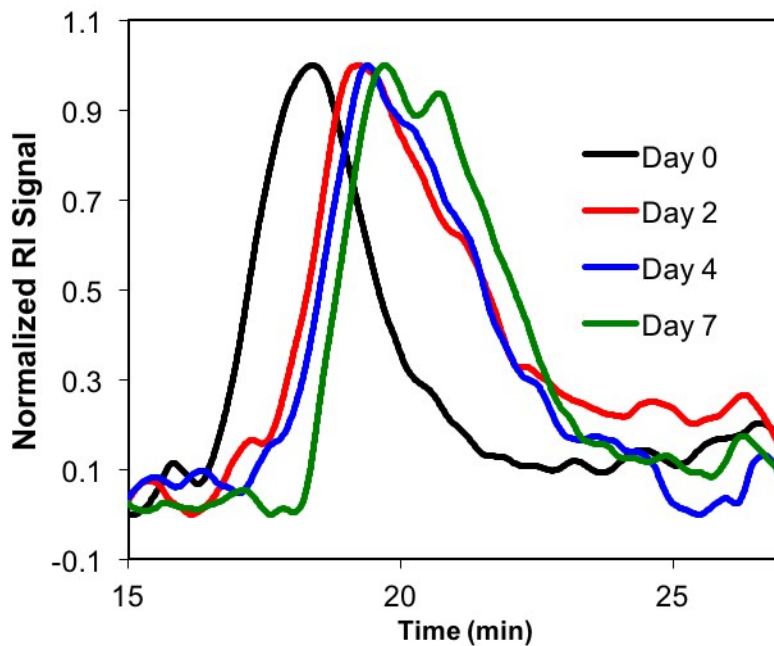


Table S1. Degradation Analysis of TR-bMoEtAPE

Day	Sample 1 (kDa)	Sample 2 (kDa)	Sample 3 (kDa)	Avg $M_n$ (kDa)	Avg $M_n$ Remain (%)
0	132	132	132	132	100.0
1	54.7	65.5	56.0	58.7	44.5
4	51.7	49.9	51.4	51.0	38.6
7	37.7	39.6	38.7	38.7	29.3