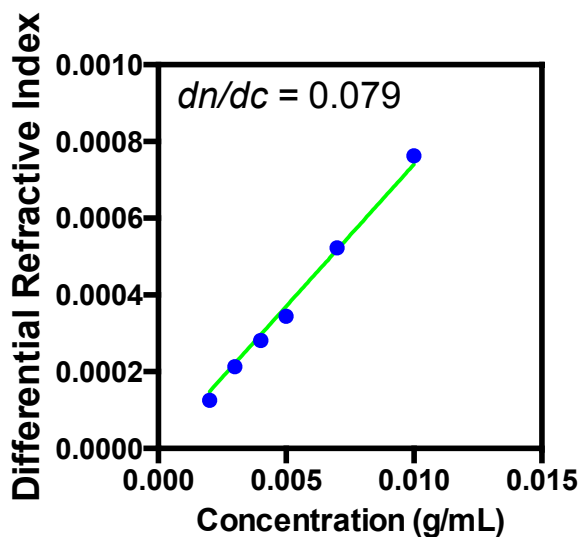


Supplementary Information

Batch mode determination dn/dc determination. Determination of the dn/dc value for poly(DMAPS) in 150 mM NaCl polymerized from a poly(HEMA-co-O300) macro-CTA was conducted using a Wyatt Interferometric Refractometer in batch mode over a concentration range of 1.00 to 5.00 mg/mL at a wavelength of 685 nm.



SI Fig. 1. Batch mode determination of the differential refractive index for poly(DMAPS) polymerized from a poly(HEMA-co-O300) macro-CTA. Measurements were conducted in 150 mM NaCl at 685 nm over a concentration range of 1.00-5.00 mg/mL.