

Supporting Information

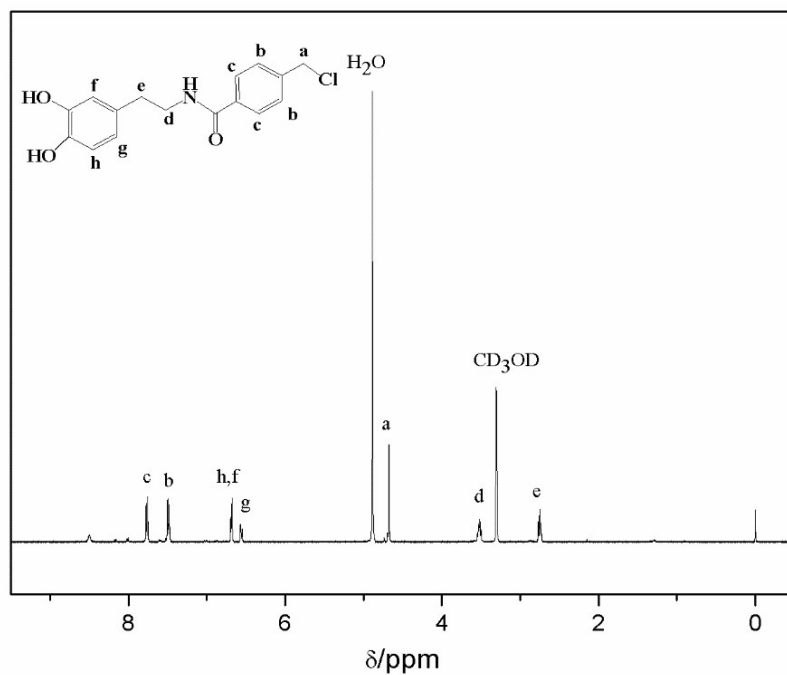


Figure S1. ¹H NMR spectrum of 4-(chloromethyl)-*N*-(3,4-dihydroxyphenethyl)benzamide in CD₃OD.

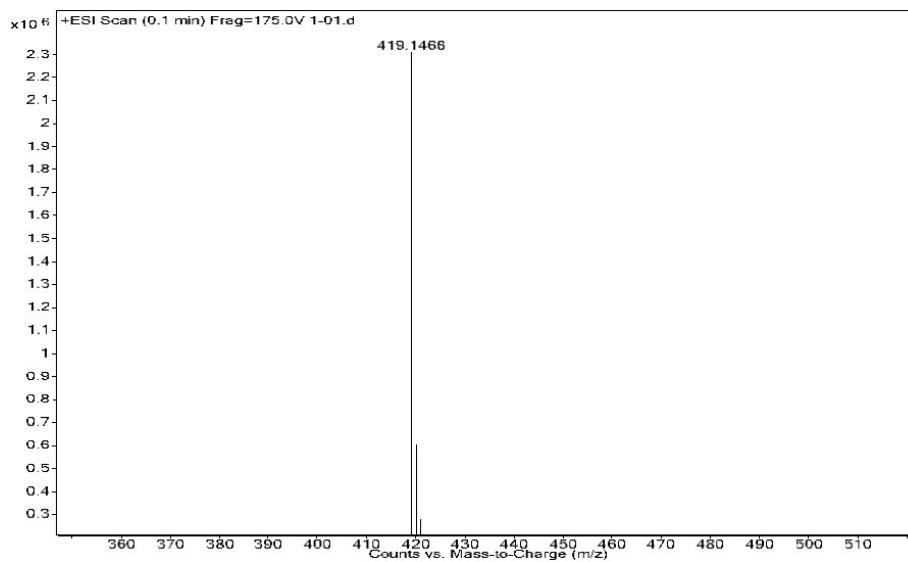


Figure S2. The mass spectrum of Dopa-DETC.

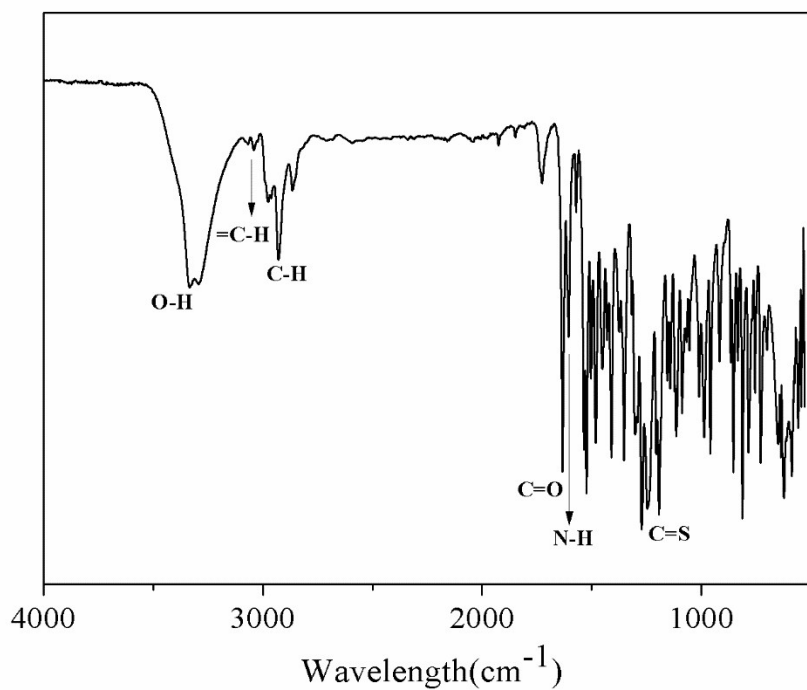


Figure S3. The FTIR spectrum of Dopa-DETC.

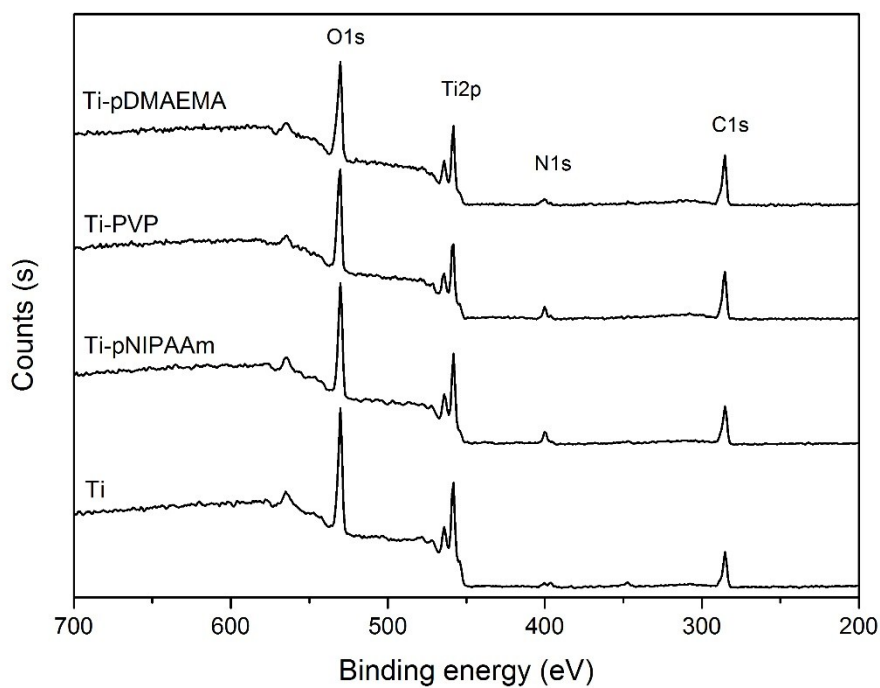


Figure S4. XPS survey spectra of titanium surface before and after immobilization of the Dopa-PVP, Dopa-PNIPAAm and Dopa-PDMAEMA.

Table S1. GPC results of block polymers

polymers	M_n (g/mol)	PDI
Dopa-PNIPAAm	46200	1.80
Dopa-P(NIPAAm- <i>b</i> -NIPAAm)	71567	1.50
Dopa-P(NIPAAm- <i>b</i> -NVP)	55888	1.57

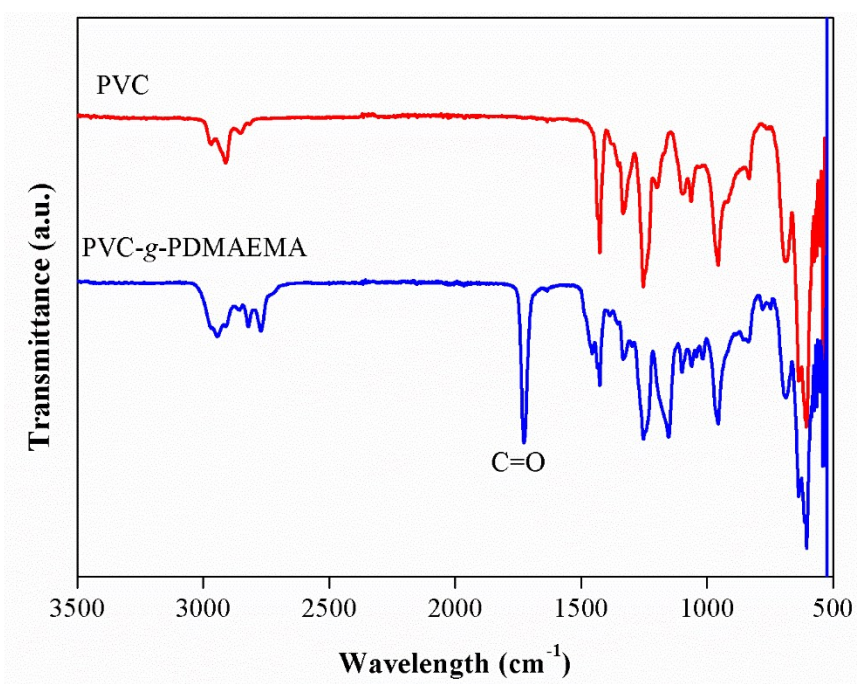


Figure S5. Reflectance FTIR spectrum of PVC and PVC-g-PDMAEMA surfaces.