

Supplementary Information

Internal Lewis pair enhanced H-bond donor: Boronate–urea and tertiary amine co-catalysis in ring-opening polymerization

Songquan Xu, Herui Sun, Jingjing Liu, Jiayi Xu, Xianfu Pan, He Dong, Yaya Liu, Zhenjiang Li* and Kai Guo*

State Key Laboratory of Materials-Oriented Chemical Engineering, College of Biotechnology and Pharmaceutical Engineering, Nanjing Tech University, 30 Puzhu Rd South, Nanjing 211816, China

Contents

¹ H NMR and ¹³ C NMR of the Boronate urea pinacol ester	S2
¹ H NMR of the 1-(3,5-bis(trifluoromethyl)phenyl)-3-phenylurea	S3
¹³ C NMR of the 1-(3,5-bis(trifluoromethyl)phenyl)-3-phenylurea	S4
¹³ C NMR and MALDI-ToF MS of the PLA	S5
¹ H NMR and ¹³ C NMR of the PTMC- <i>b</i> -PLA	S6

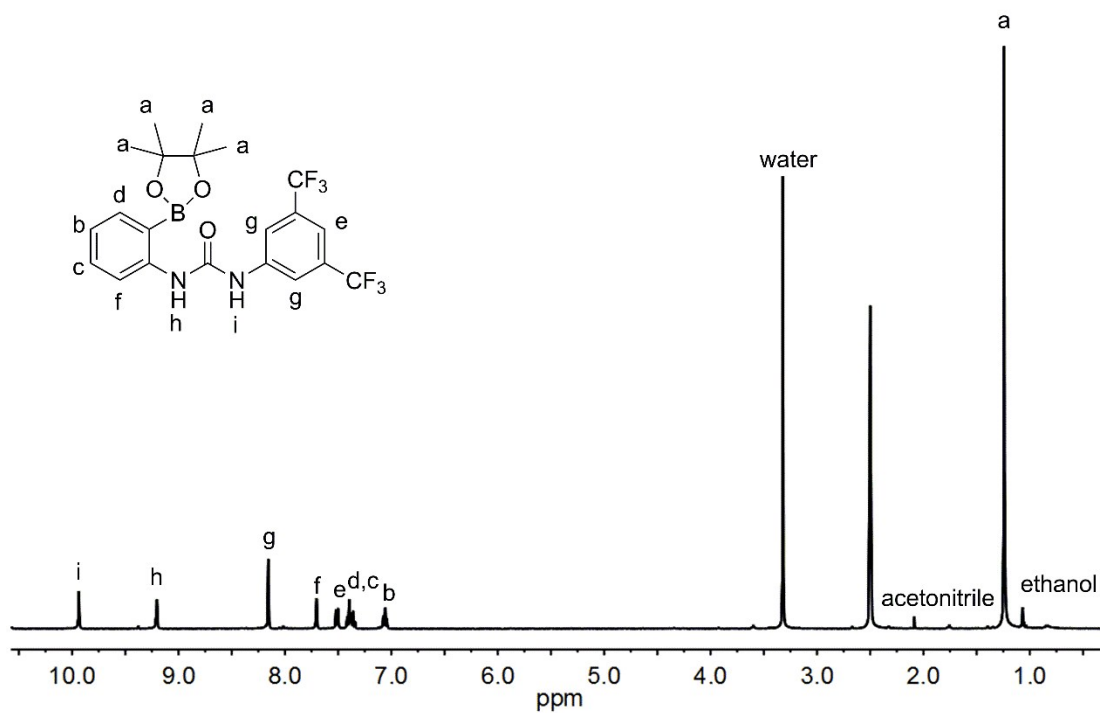


Figure S1. ¹H NMR spectrum of the Boronate urea pinacol ester (400 MHz, DMSO).

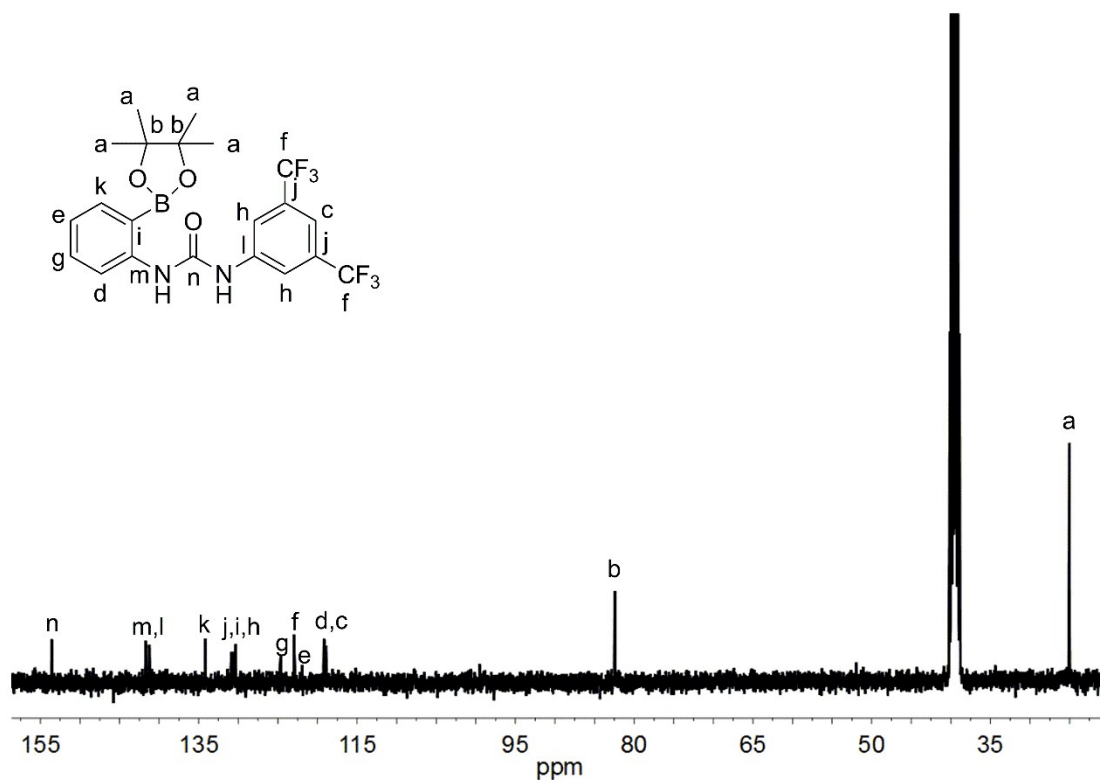


Figure S2. ¹³C NMR spectrum of the Boronate urea pinacol ester (400 MHz, DMSO).

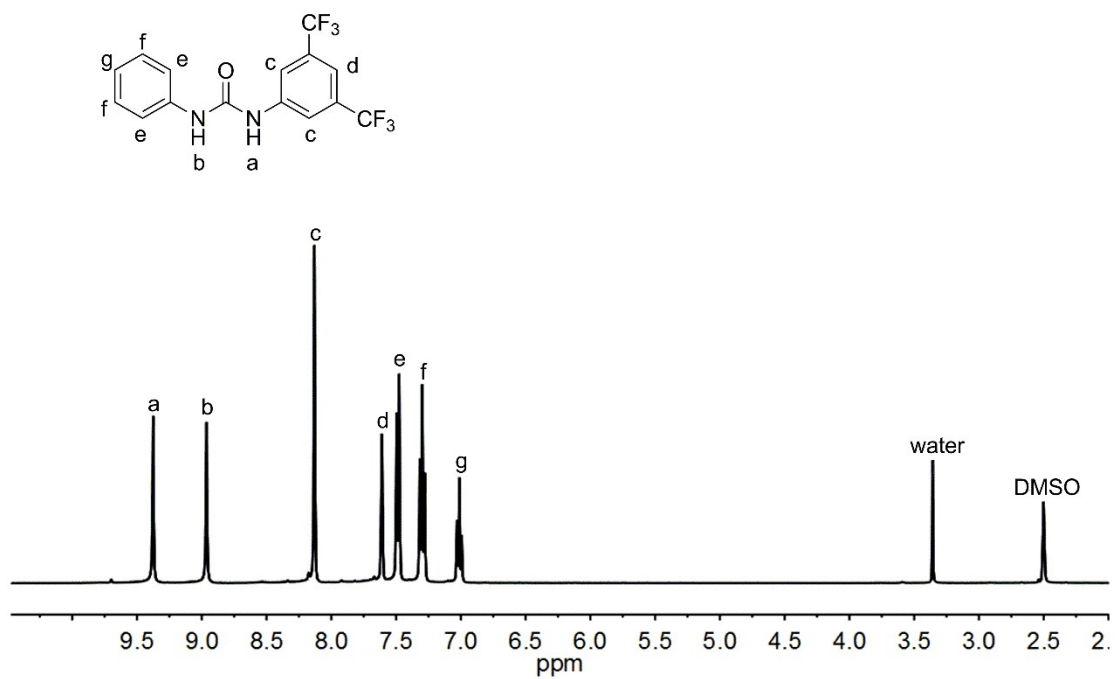


Figure S3. ¹H NMR spectrum of the 1-(3,5-bis(trifluoromethyl)phenyl)-3-phenylurea (400 MHz, DMSO).

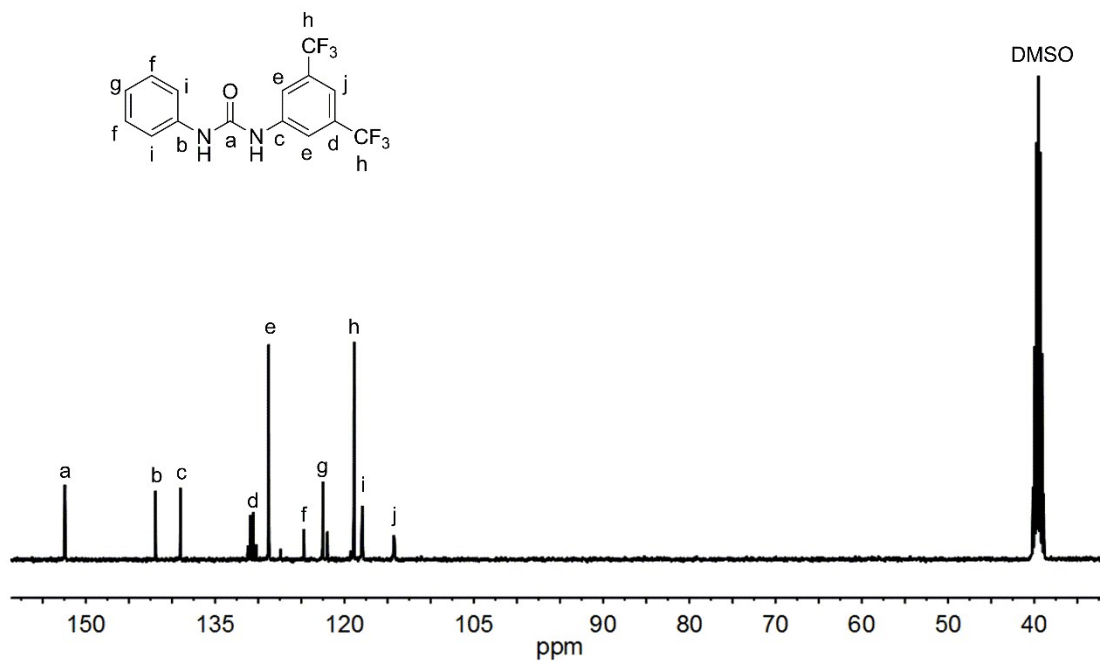


Figure S4. ^{13}C NMR spectrum of the 1-(3,5-bis(trifluoromethyl)phenyl)-3-phenylurea (400 MHz, DMSO)

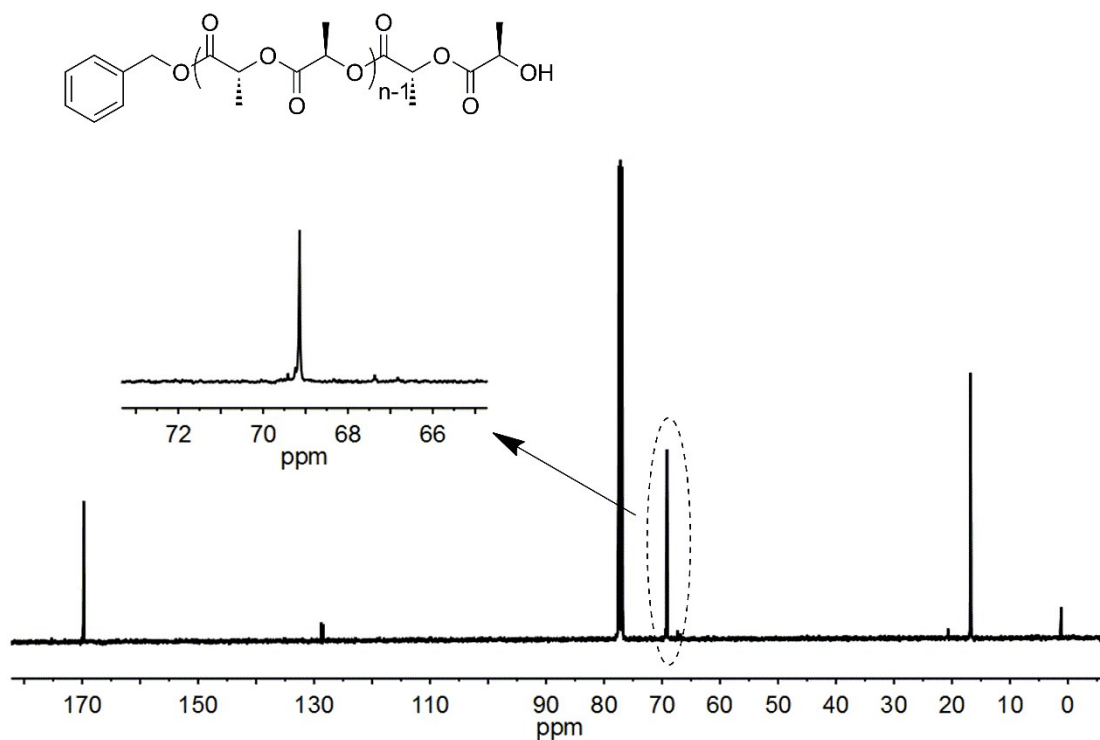


Figure S5 Methine region of ¹³C NMR spectrum of the obtained PLA prepared at room temperature (400 MHz, CDCl₃).

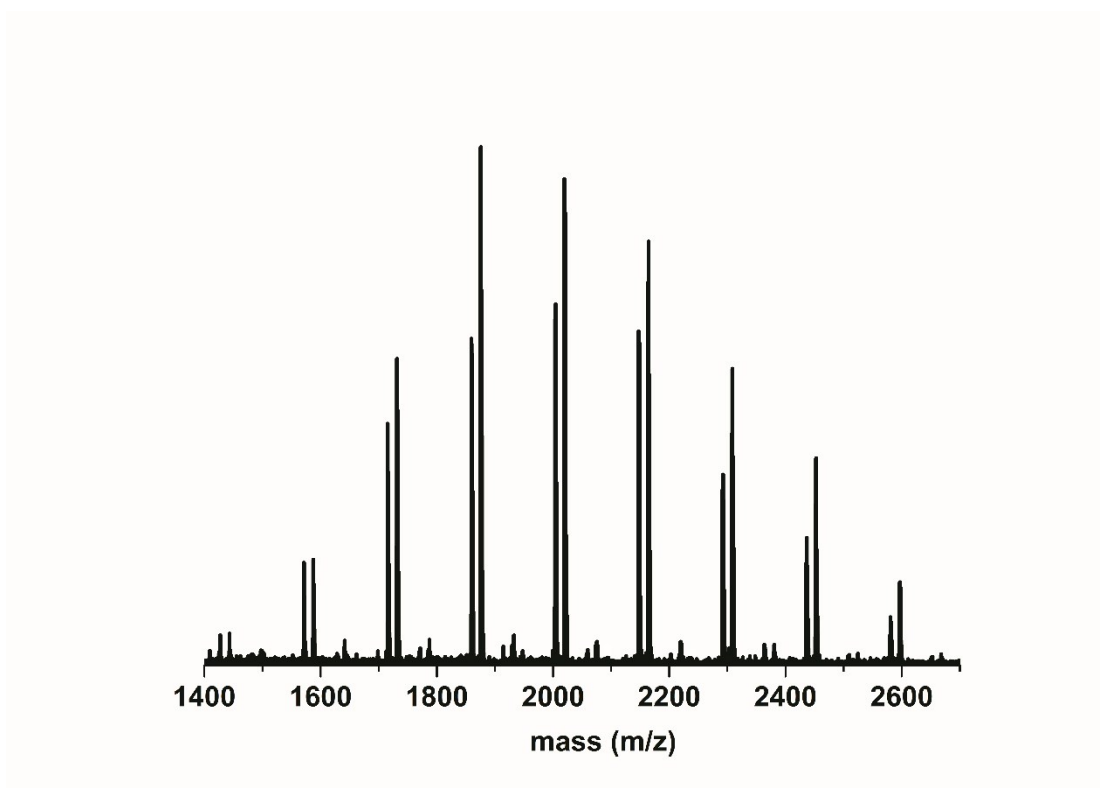


Figure S6 MALDI-ToF MS spectrum of PLLA.

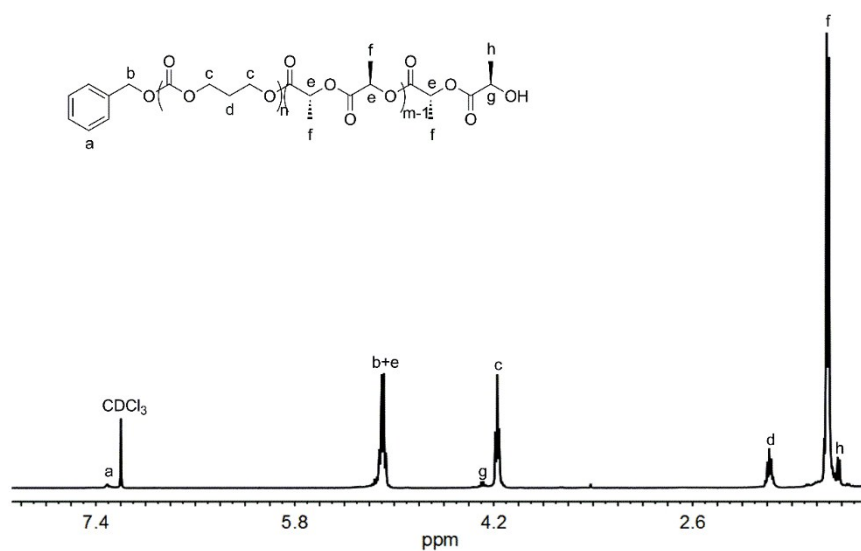


Figure S7 ^1H NMR spectrum (in CDCl_3) of PTMC-*b*-PLLA initiated by BnOH.

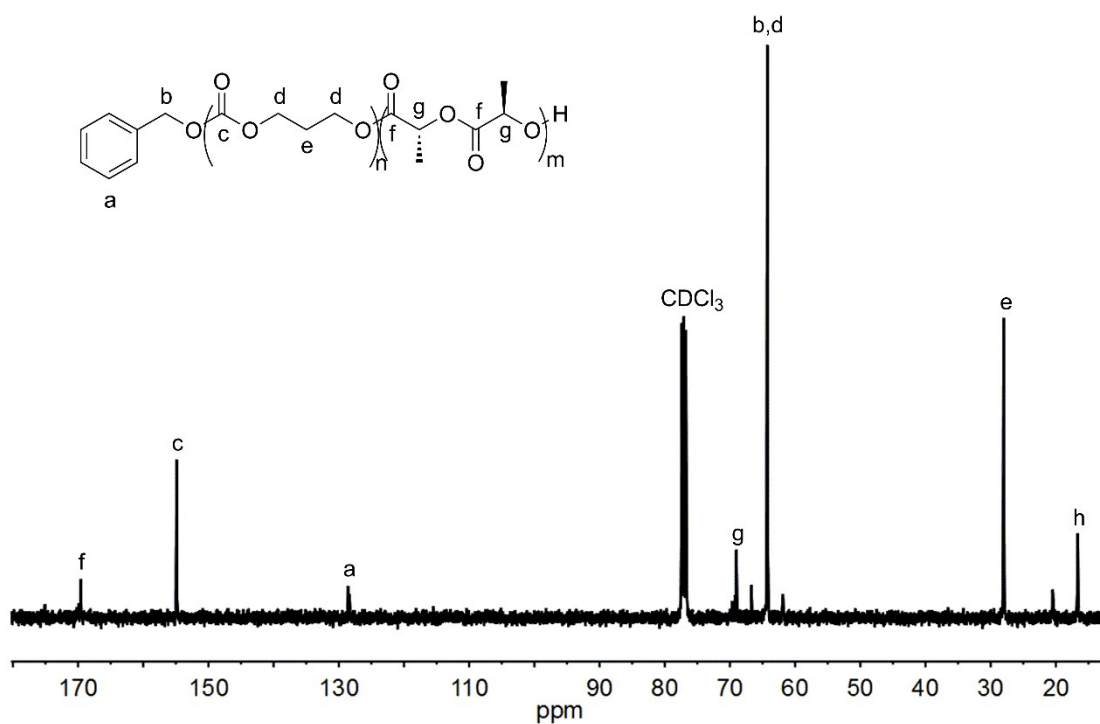


Fig.S8 ^{13}C NMR spectrum in (CDCl_3) of PTMC-*b*-PLLA initiated by BnOH