

Supporting Informations

to

Rational design of functionalized polyacrylate-based high internal phase emulsion materials for analytical and biomedical uses

**Gloria Brusotti, Enrica Calleri, Chiara Milanese, Laura Catenacci, Giorgio Marrubini,
Milena Sorrenti, Alessandro Girella, Gabriella Massolini, Giuseppe Tripodo**

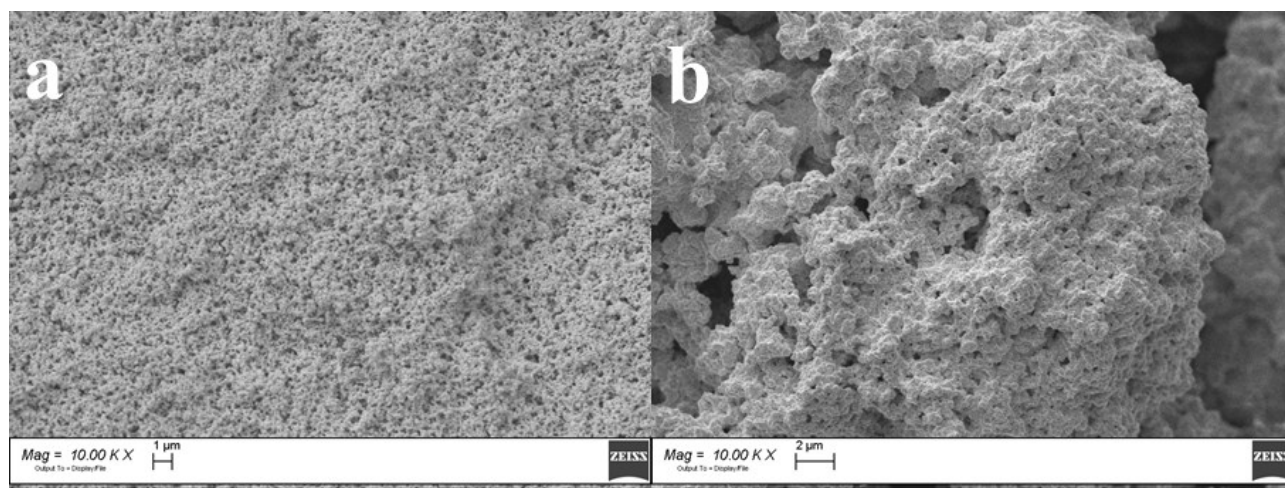


Figure SI1. SEM of a) HIPE 1.0 and b) HIPE 1.1 at 10000 X

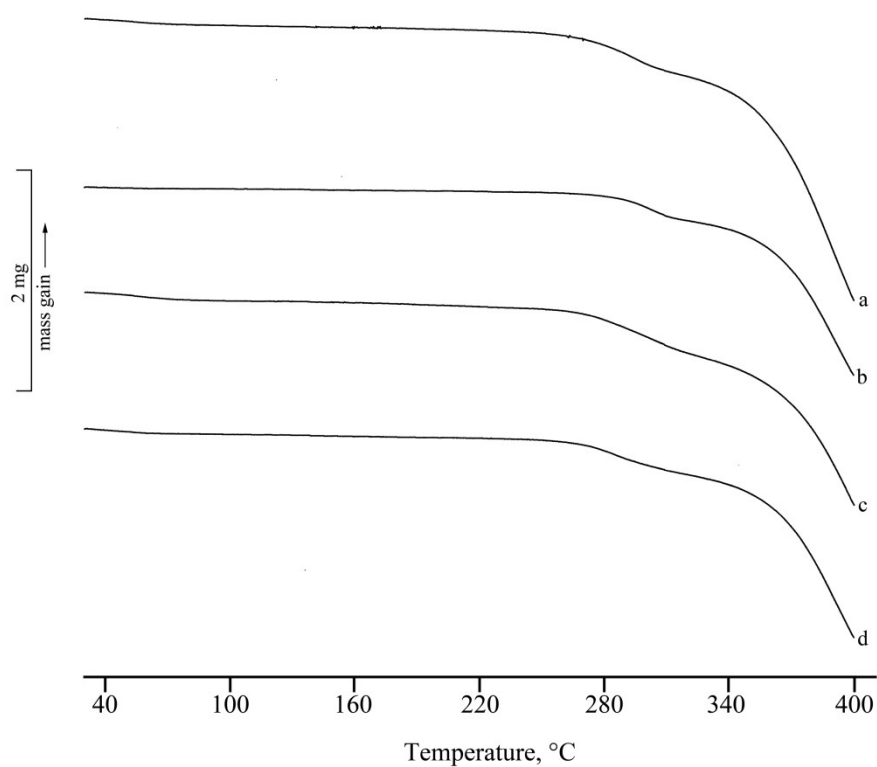


Figure SI2. TGA curves for a) HIPE 2.0 before THF washing; b) HIPE 2.0 after THF washing; c) HIPE 2.2.1 (THF washed); and d) HIPE 2.3.1 (THF washed).

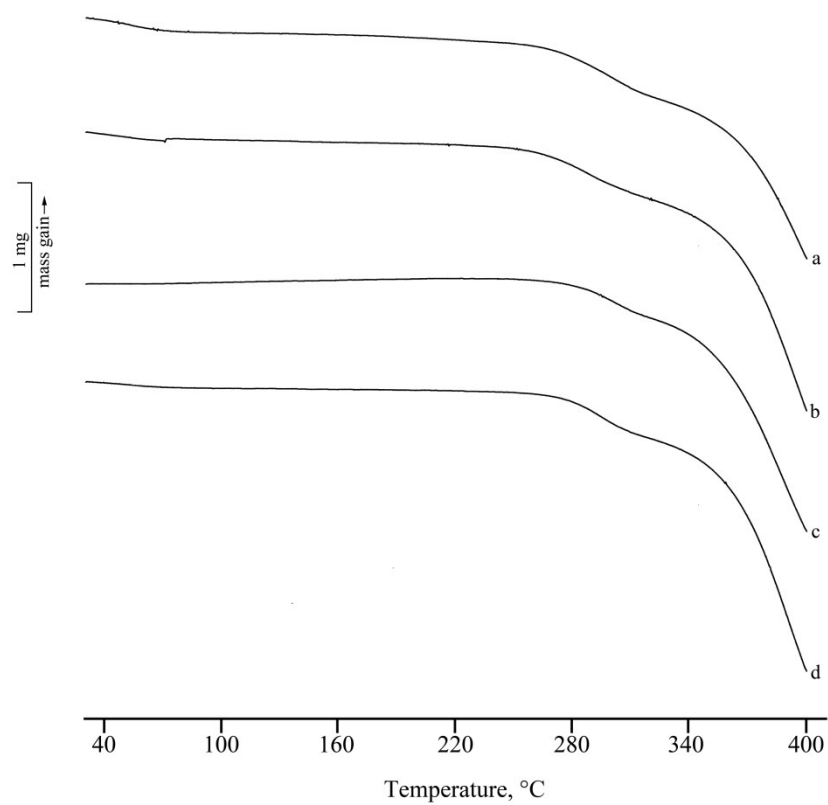


Figure SI3. TGA curves for a) HIPE 2.7.1; b) HIPE 2.8.1; c) HIPE 2.10.1; and d) HIPE 2.11.1.

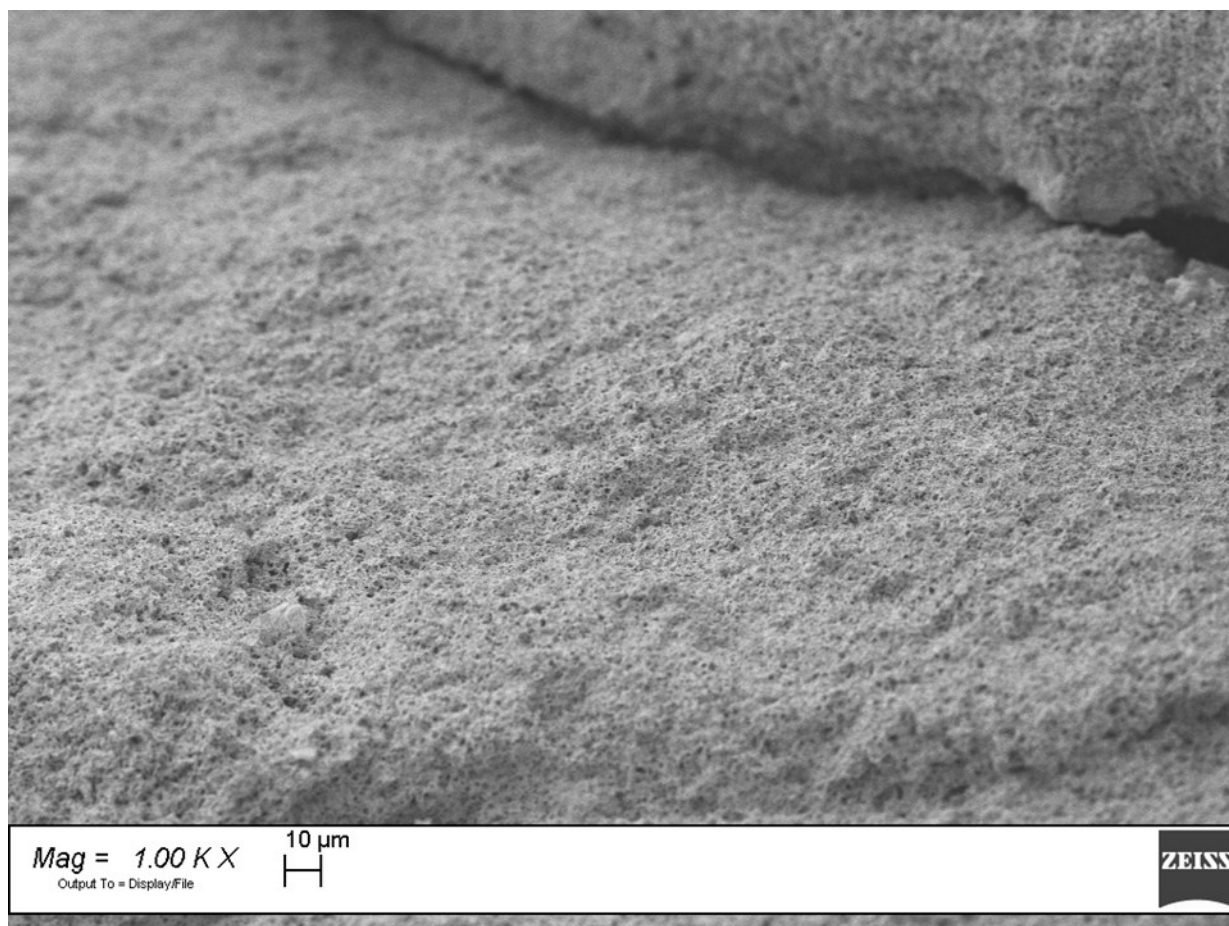


Figure SI4. SEM picture of HIPE 2.8.1 at 1000 X

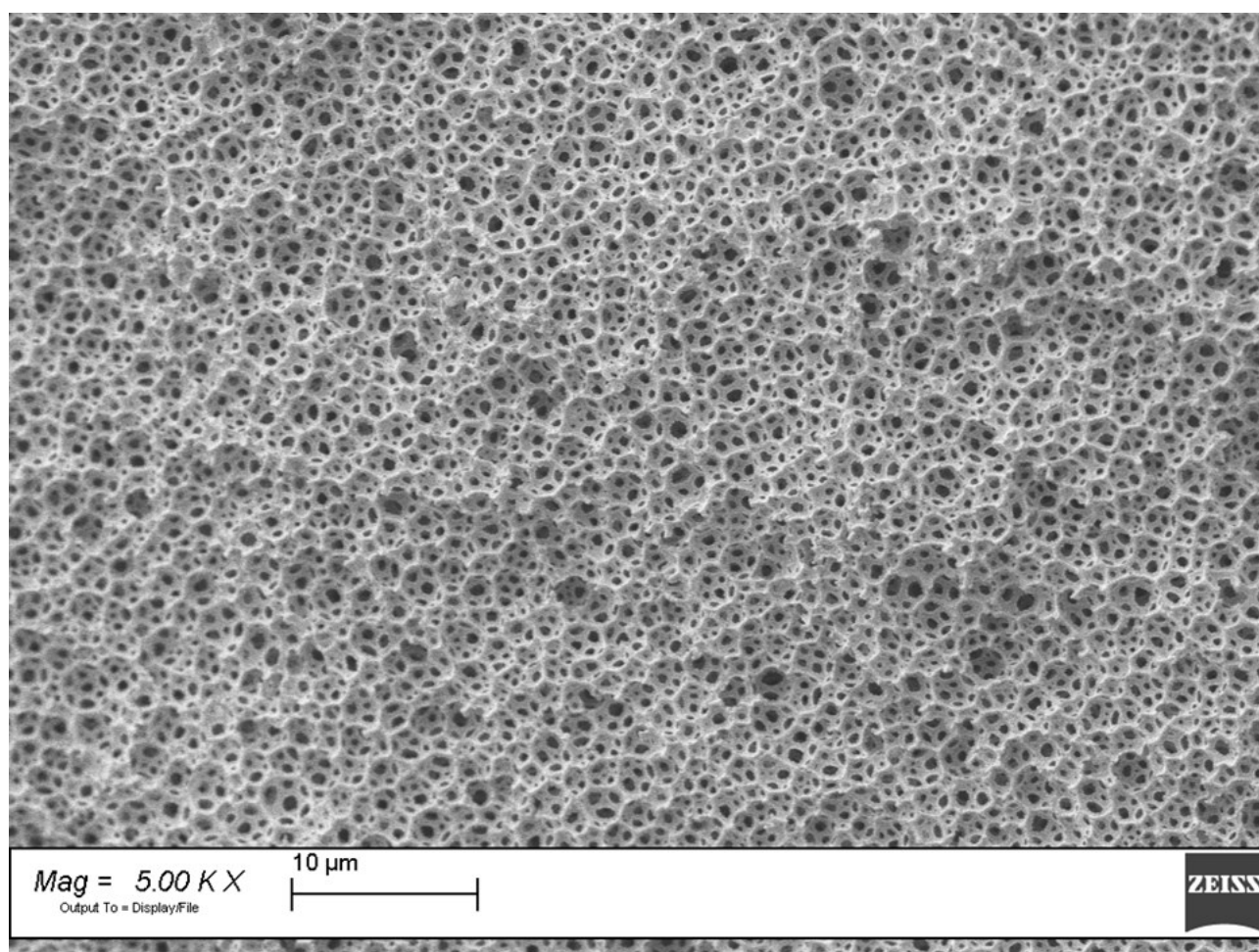


Figure SI5. SEM picture of HIPE 2.8.1 at 5000 X

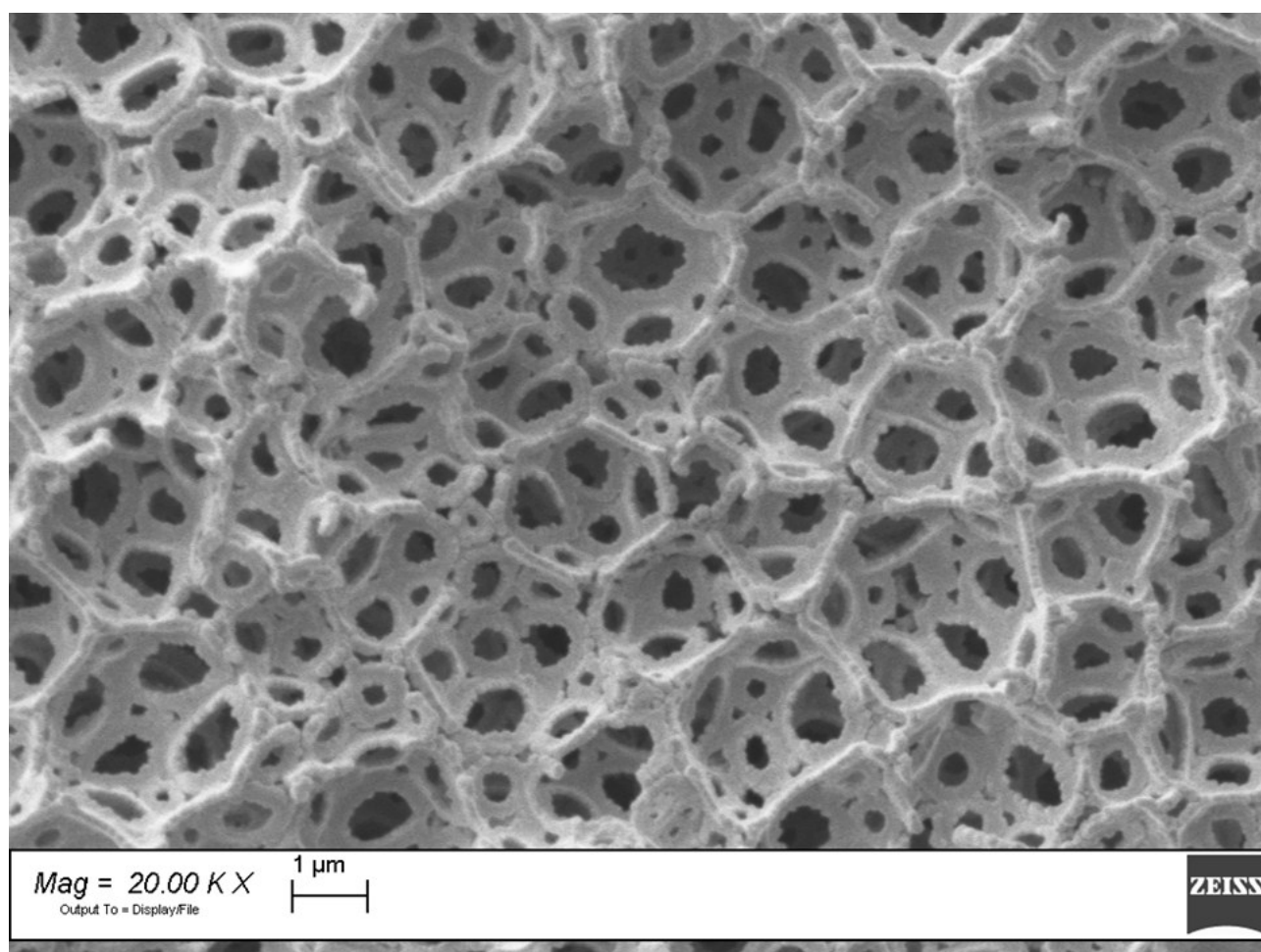


Figure SI6. SEM picture of HIPE 2.8.1 at 20000 X

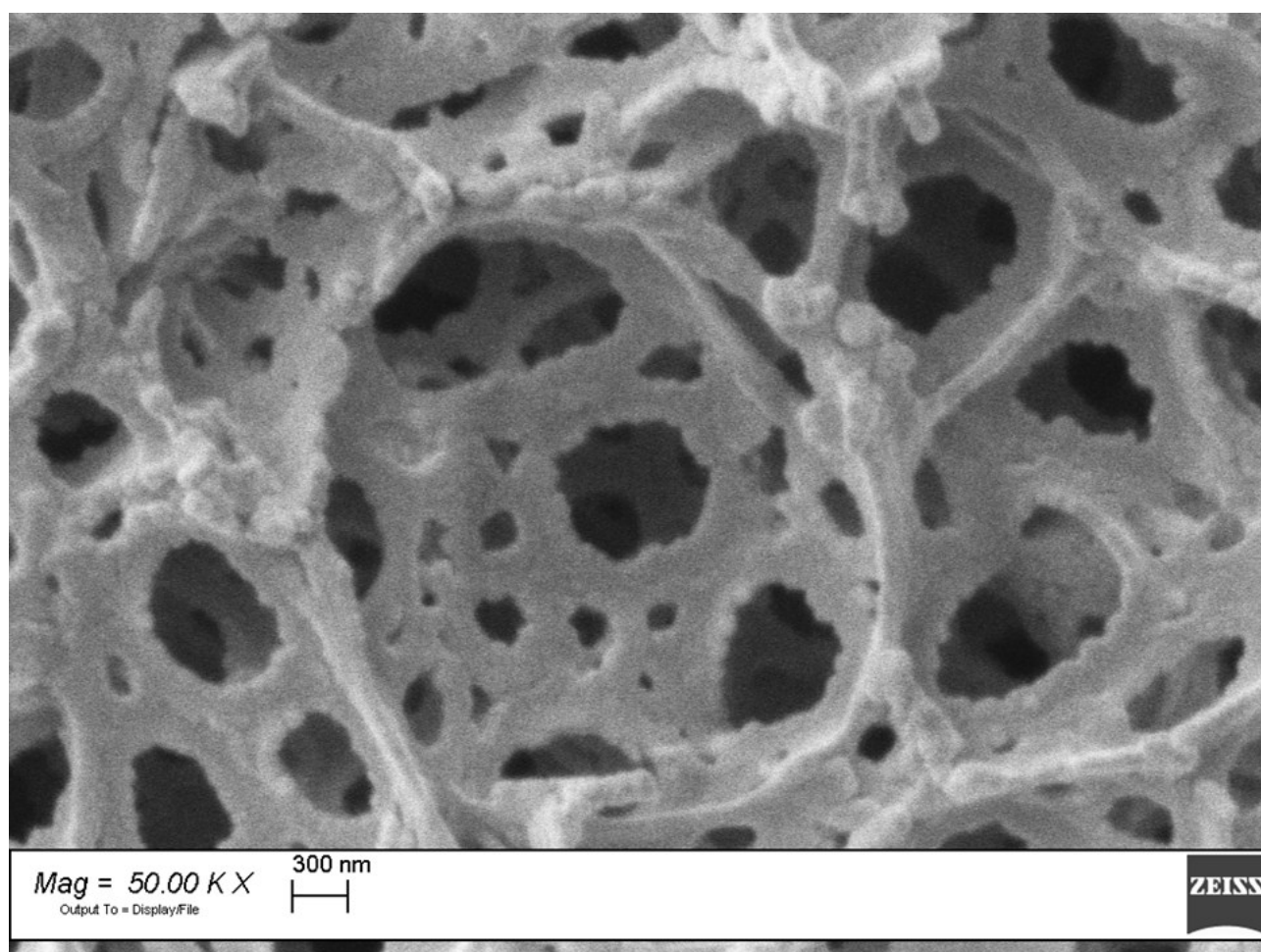


Figure S17. SEM picture of HIPE 2.8.1 at 50000 X