

Electronic Supplementary Information (ESI) for

**Different cell behaviors induced by stereochemistry
on polypeptide brush grafted surfaces**

Yinan Ma,^{a,c} Yong Shen^{b*} and Zhibo Li^{a,c*}

^aSchool of Polymer Science and Engineering, Qingdao University of Science and Technology, Qingdao 266042, China. Email: zbli@qust.edu.cn

^bCollege of Chemical Engineering, Qingdao University of Science and Technology, Qingdao 266042, China. Email: shenyong@iccas.ac.cn

^cLaboratory of Polymer Physics and Chemistry, Institute of Chemistry, Chinese Academy of Sciences, Beijing 100190, China.

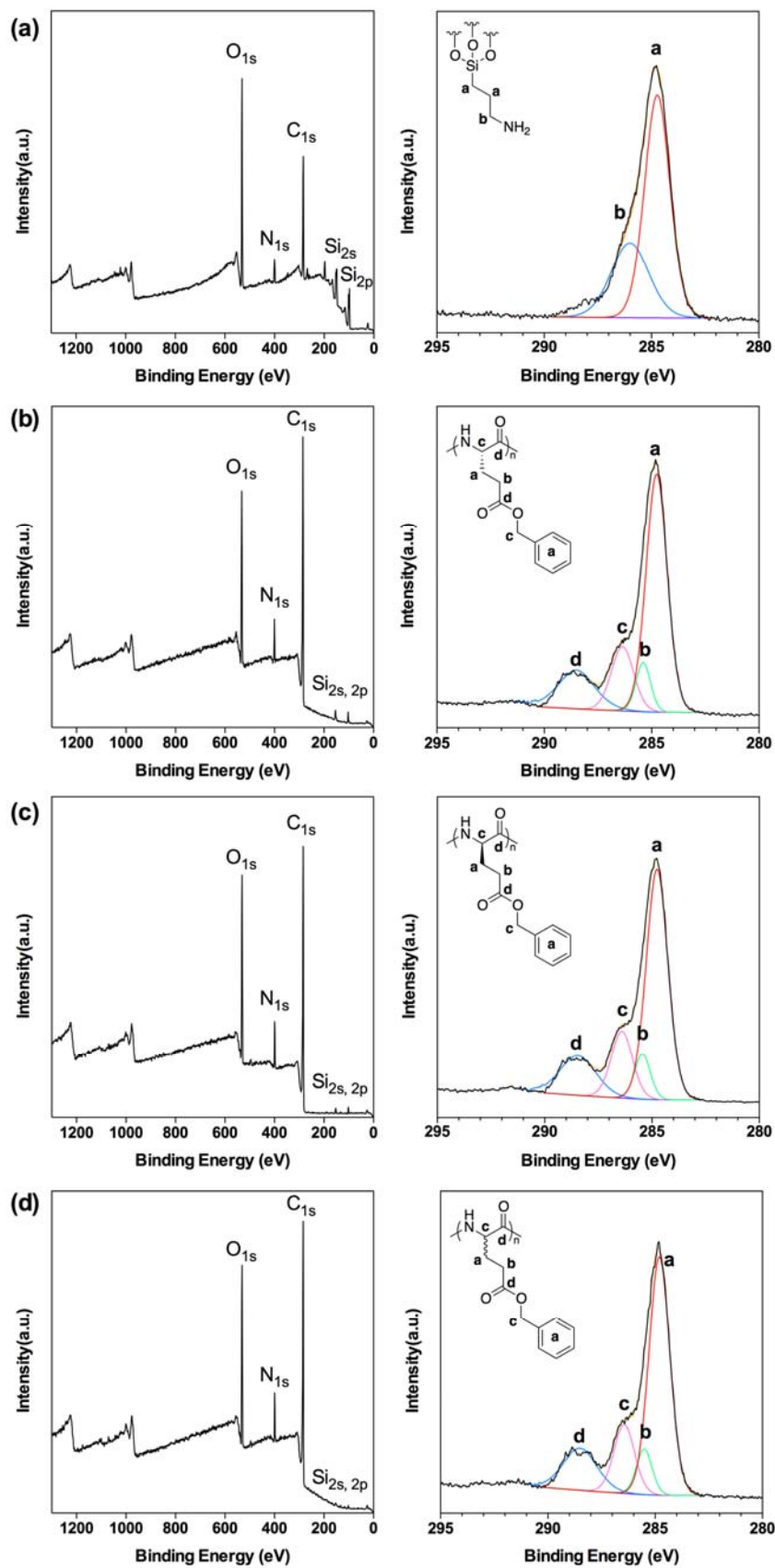


Figure S1. XPS survey spectra and C_{1s} high-resolution scans of (a) APTES, (b) PBLG, (c) PBDG and (d) PBracG-grafted silicon wafers.

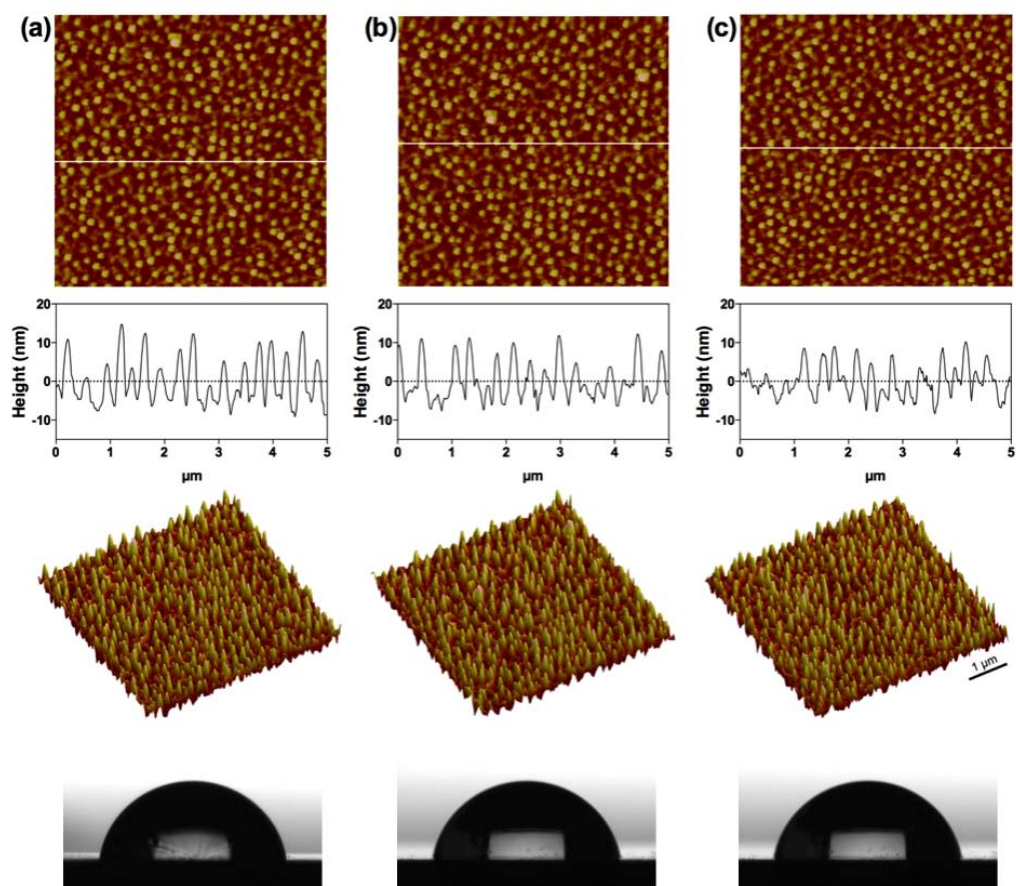


Figure S2. Topography of polypeptide-grafted silicon wafers by AFM: (a) PBLG, (b) PBDG, and (c) PBracG. Top panel: 2D images ($5 \times 5 \mu\text{m}$, $Z = 35 \text{ nm}$) and corresponding cross sectional profiles. Bottom panel: 3D images and water contact angle (WCA) measurements.