

Table of Contents

X-ray Crystallography of Compound 5.....	S2
Copies of NMR Spectra.....	S3-S26

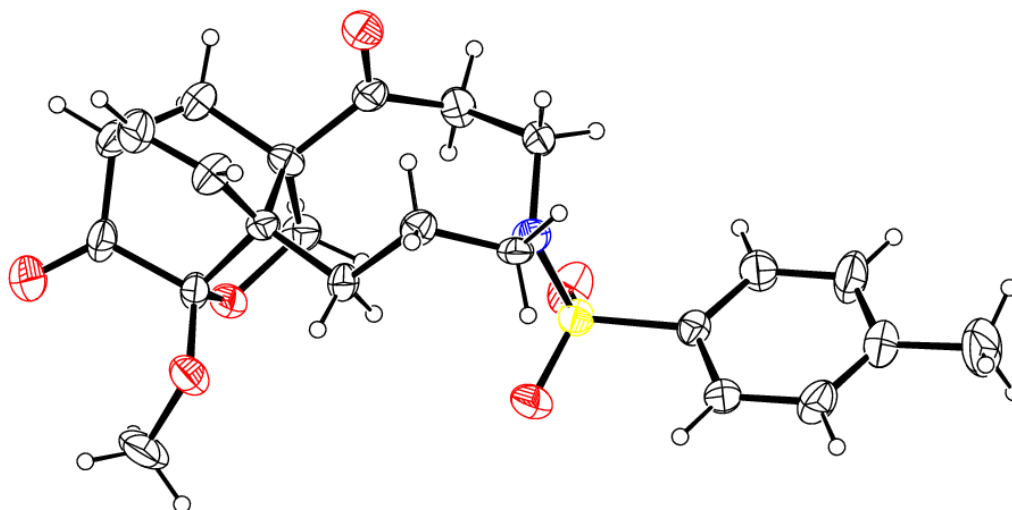
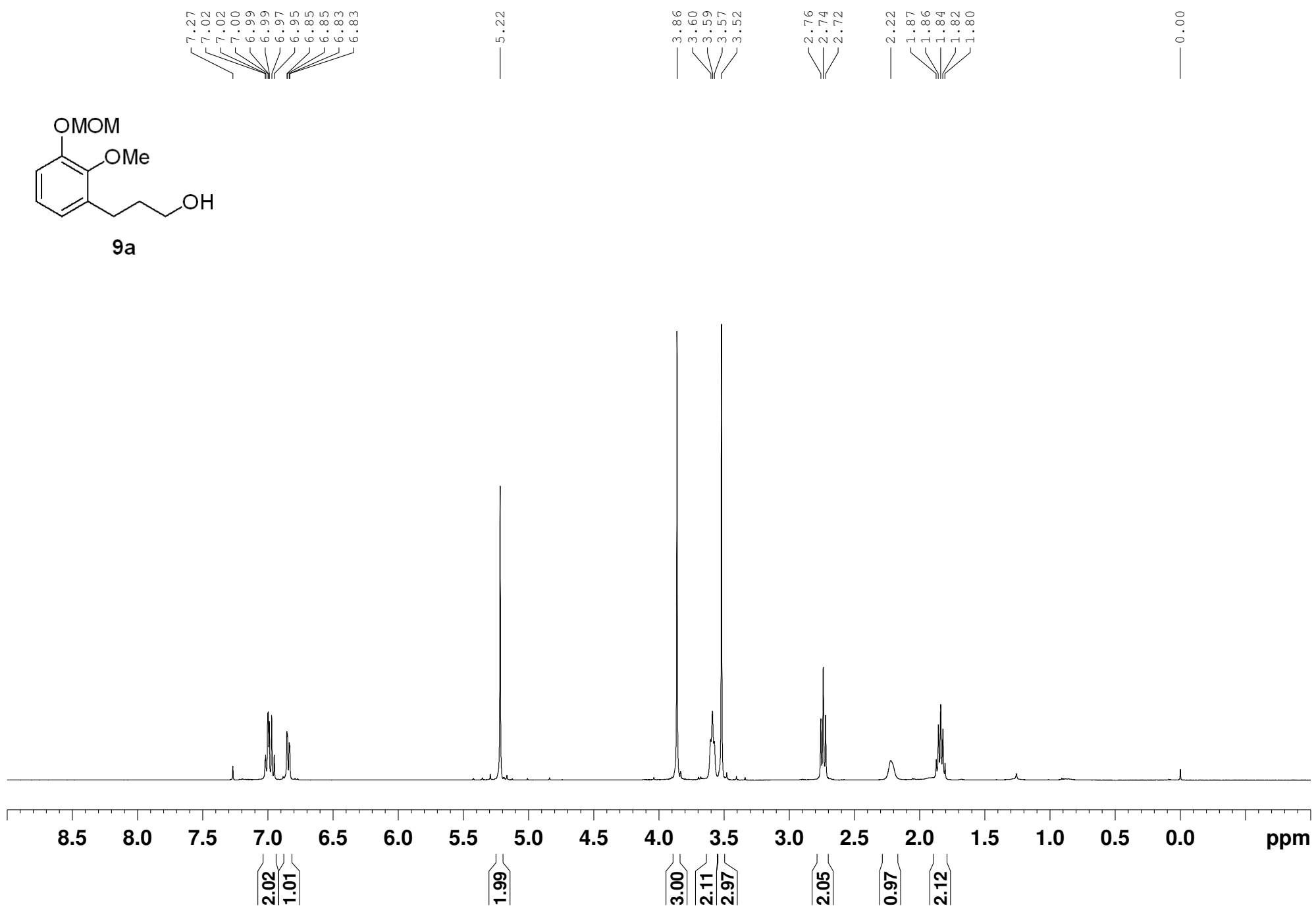
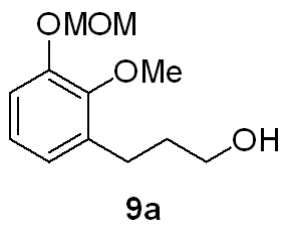
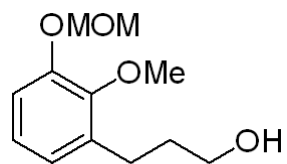


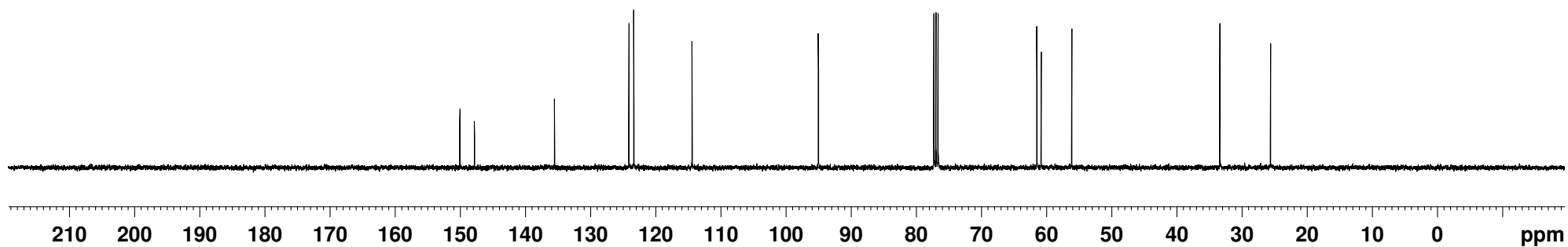
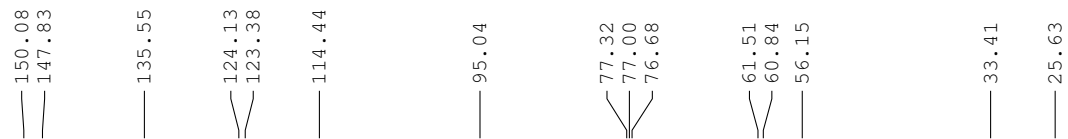
Figure S1: X-ray crystallographic structure of compound **5** (CCDC 1438512). Anisotropic displacement ellipsoids show 30% probability levels. Hydrogen atoms are drawn as circles with small radii.

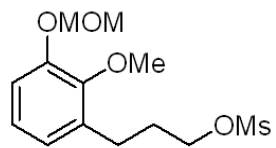
Crystal Data for $C_{23}H_{27}NO_6S$ ($M=445.52$ g/mol): monoclinic, space group $P2_1/n$ (no. 14), $a = 8.2306(9)$ Å, $b = 9.8924(12)$ Å, $c = 26.999(4)$ Å, $\beta = 98.152(13)^\circ$, $V = 2176.0(5)$ Å³, $Z = 4$, $T = 293.78(10)$ K, $\mu(\text{MoK}\alpha) = 0.189$ mm⁻¹, $D_{\text{calc}} = 1.360$ g/cm³, 9071 reflections measured ($6.8^\circ \leq 2\theta \leq 51.3^\circ$), 4061 unique ($R_{\text{int}} = 0.1159$, $R_{\text{sigma}} = 0.1872$) which were used in all calculations. The final R_1 was 0.1529 ($>2\sigma(I)$) and wR_2 was 0.4084 (all data).



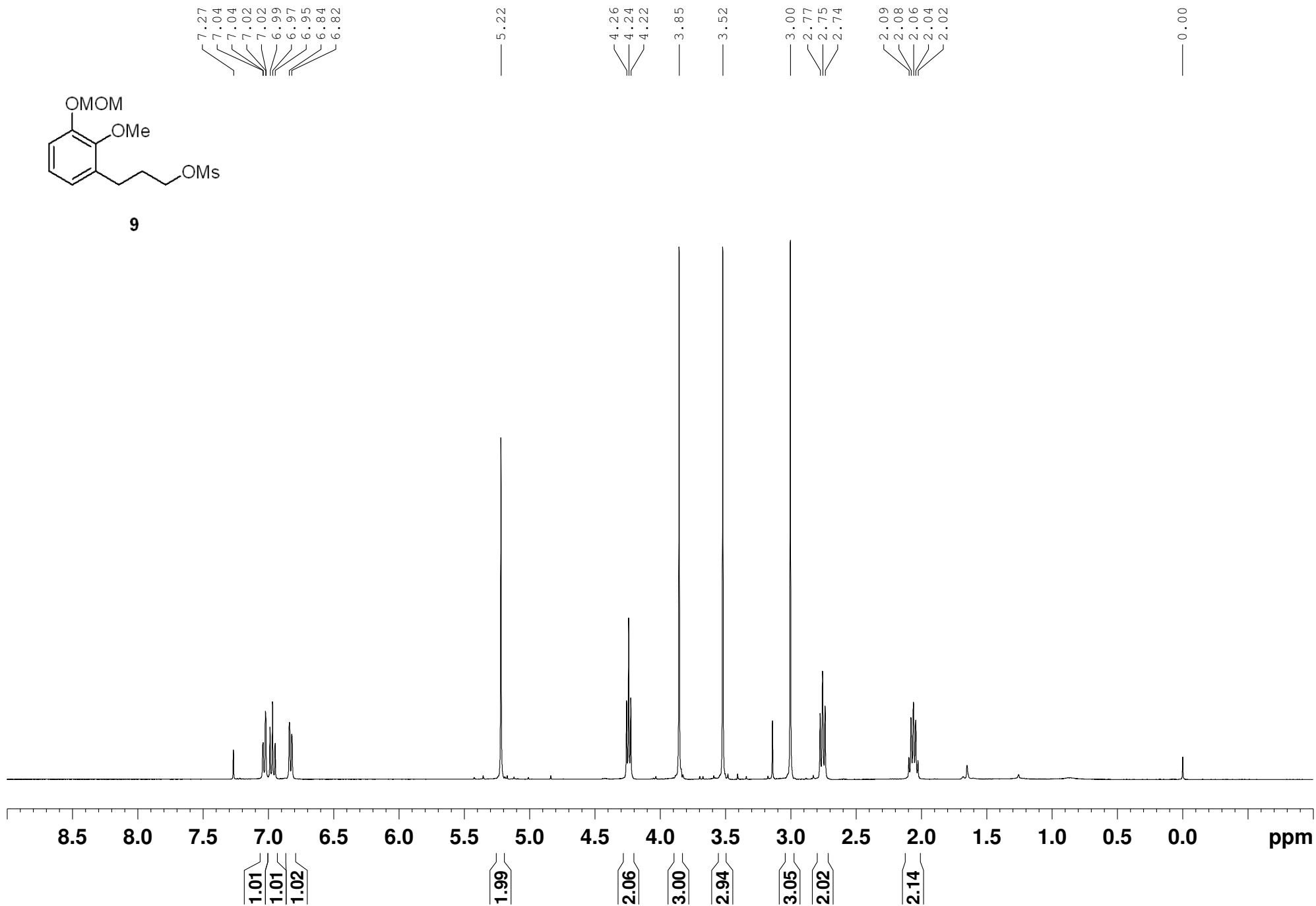


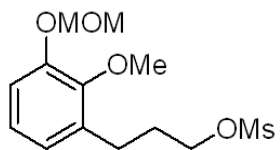
9a



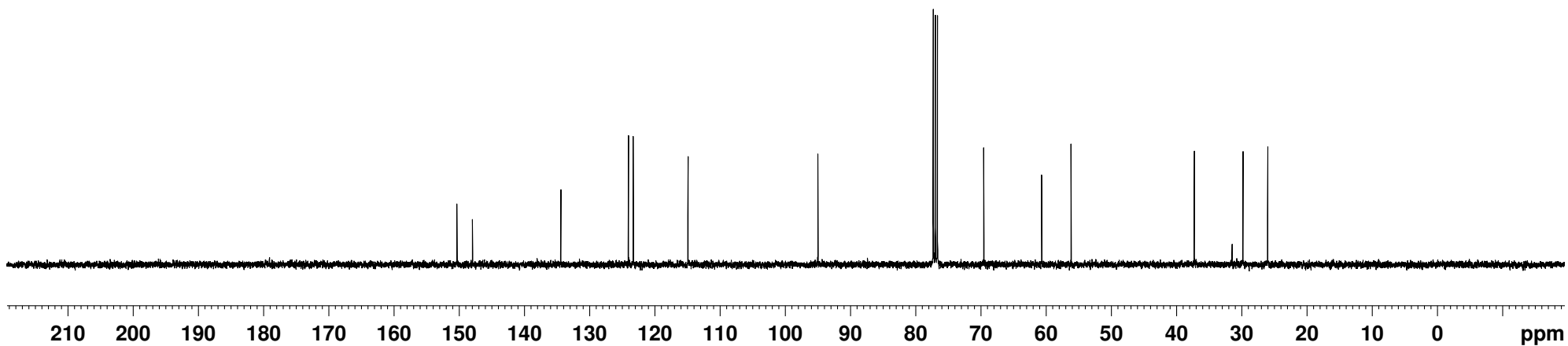
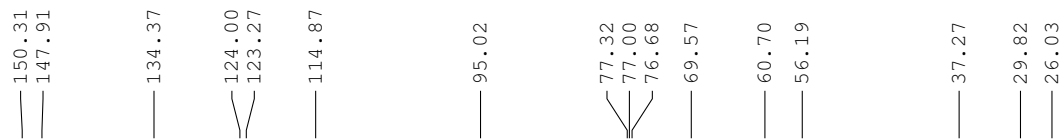


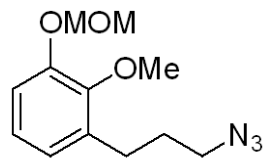
9



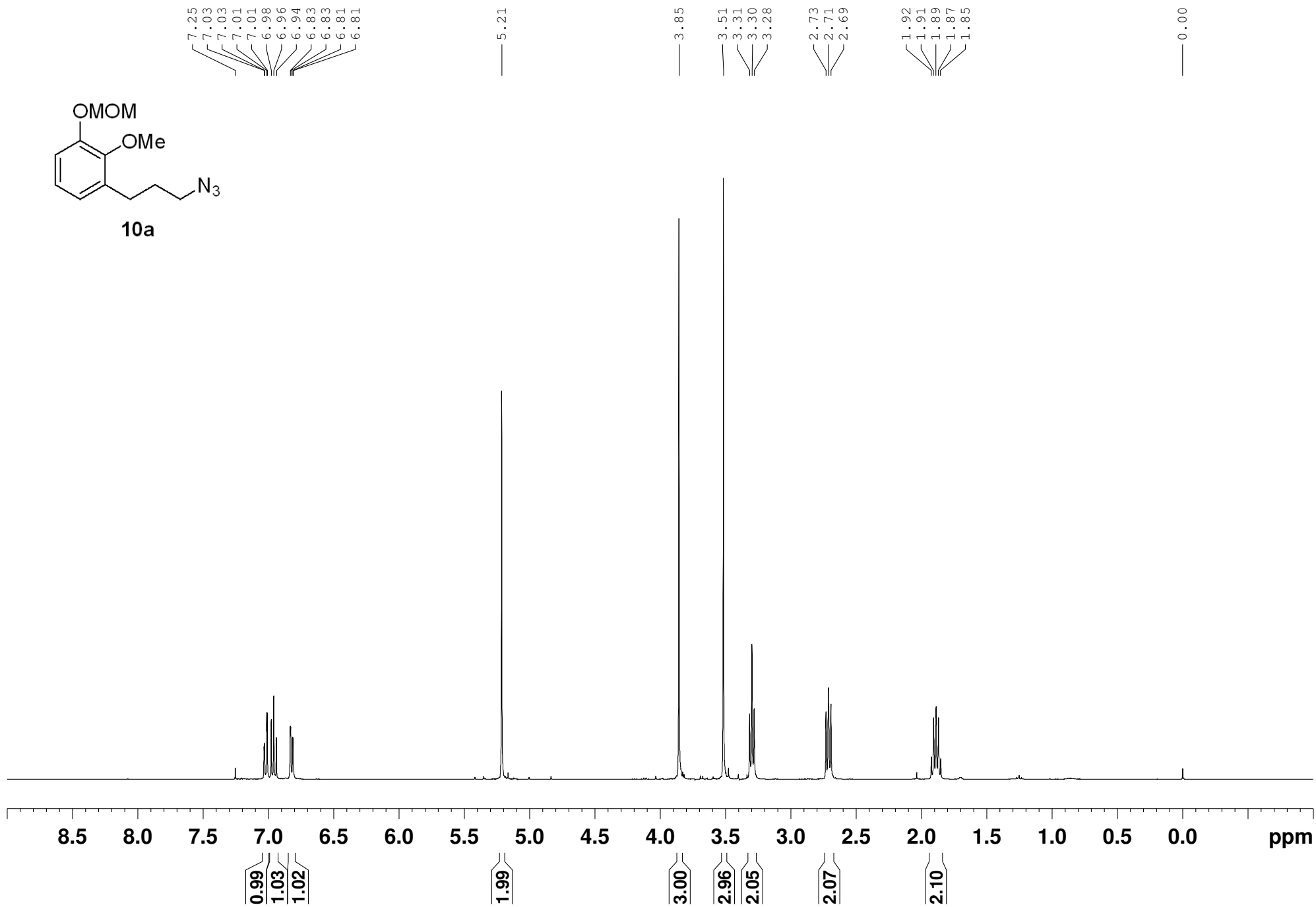


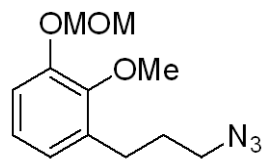
9



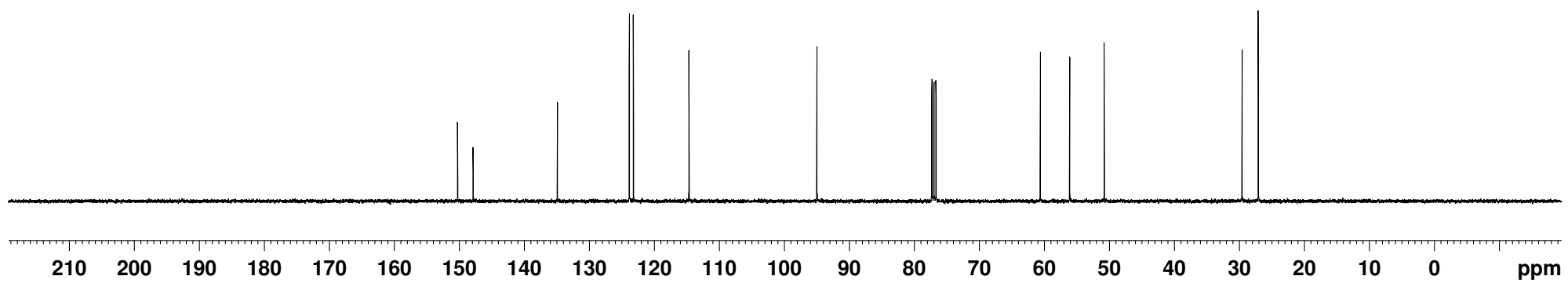


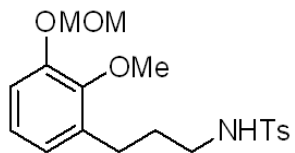
10a



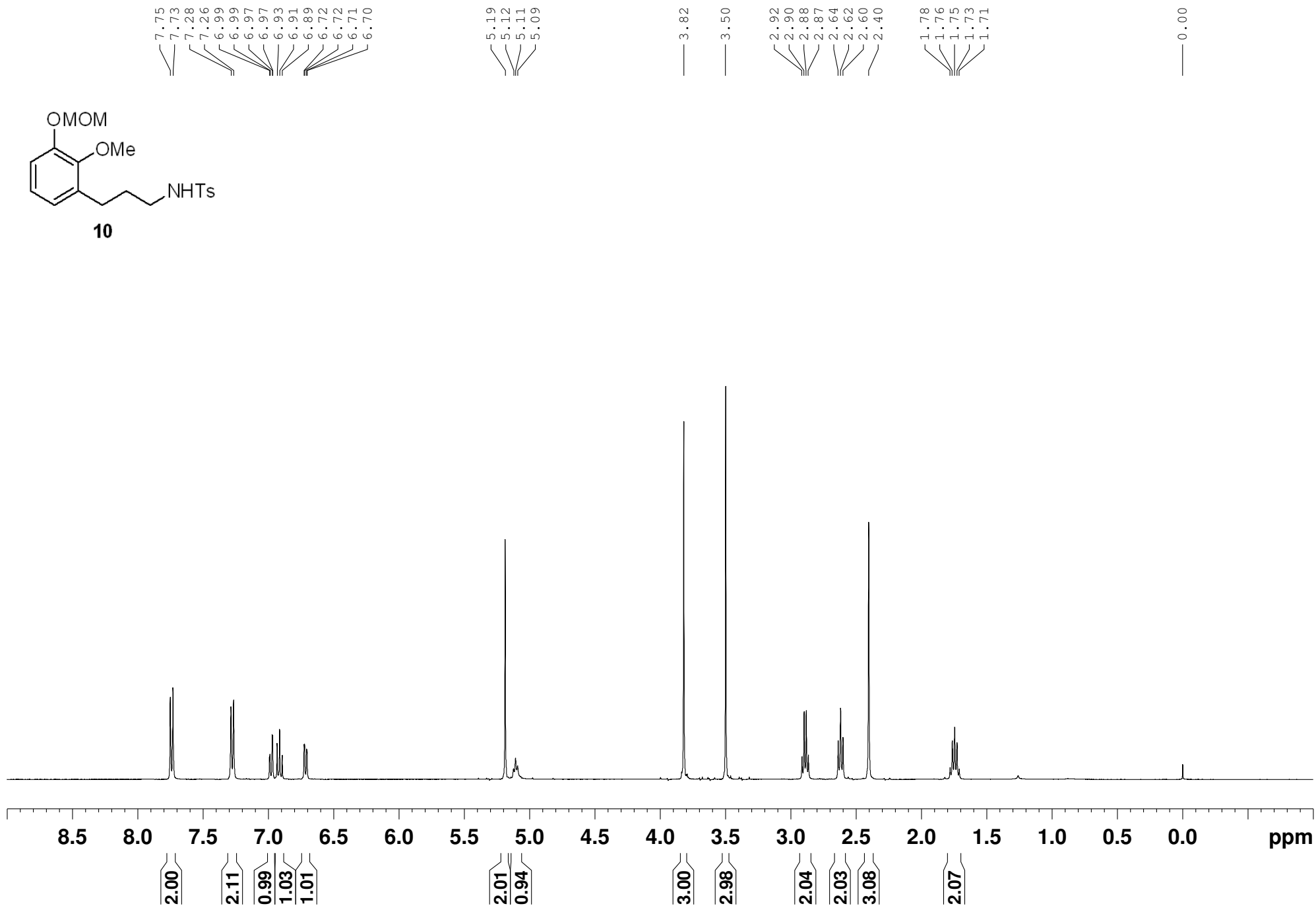


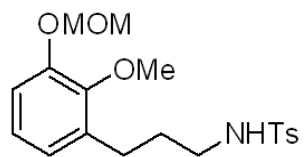
10a



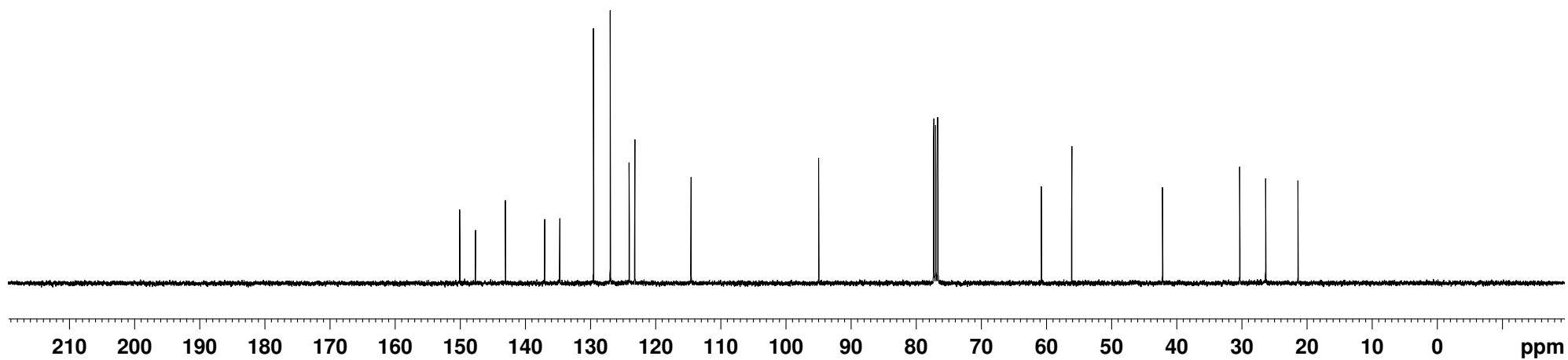
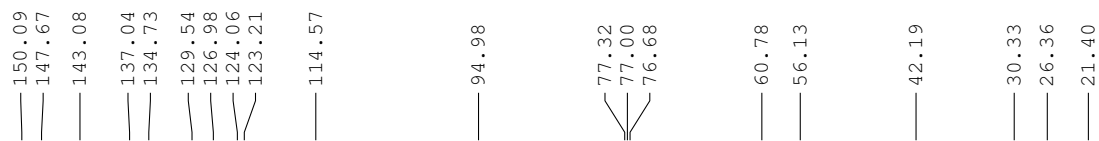


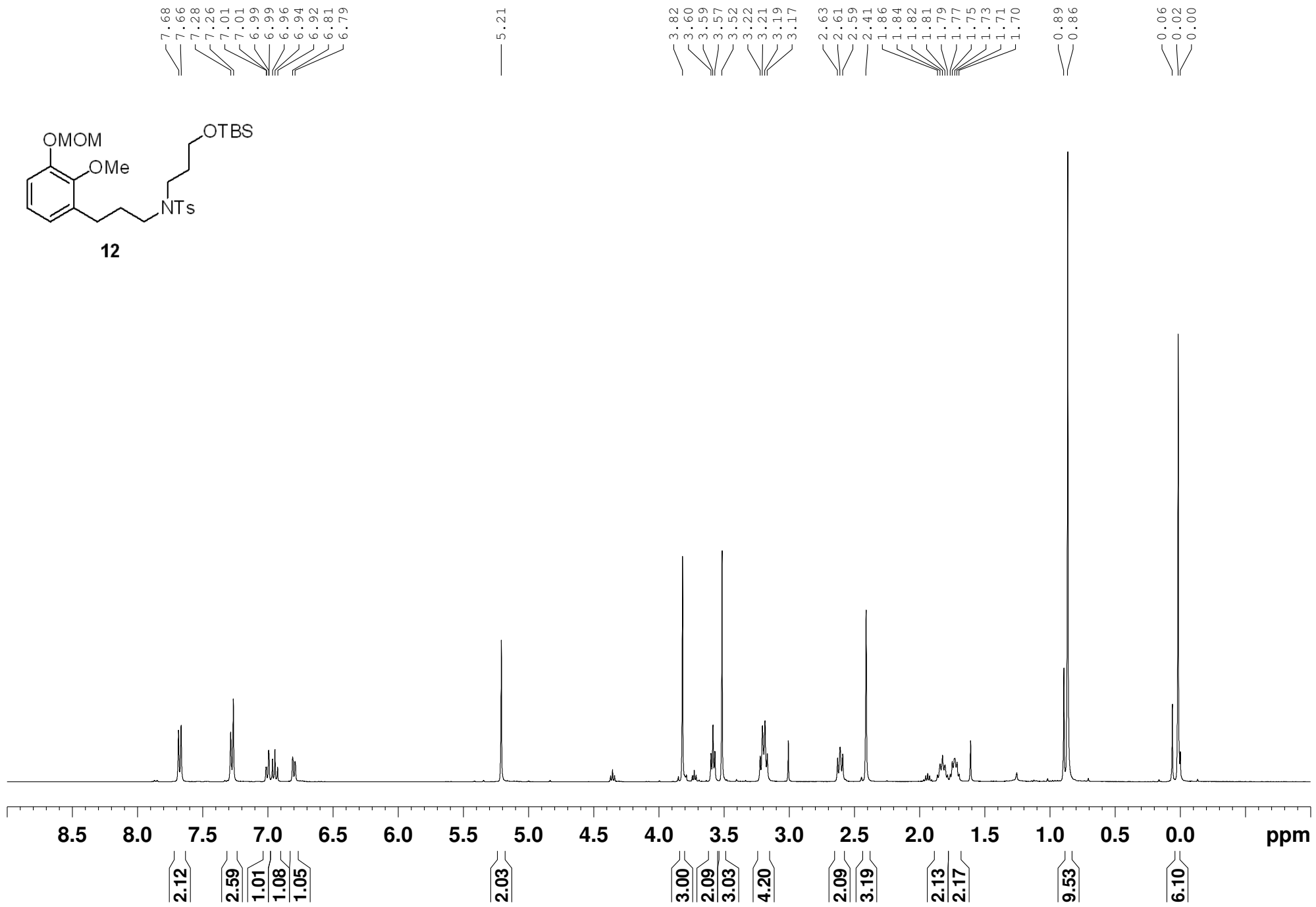
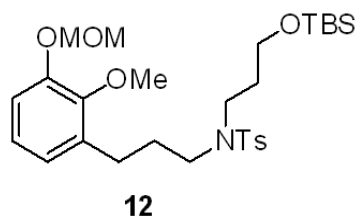
10

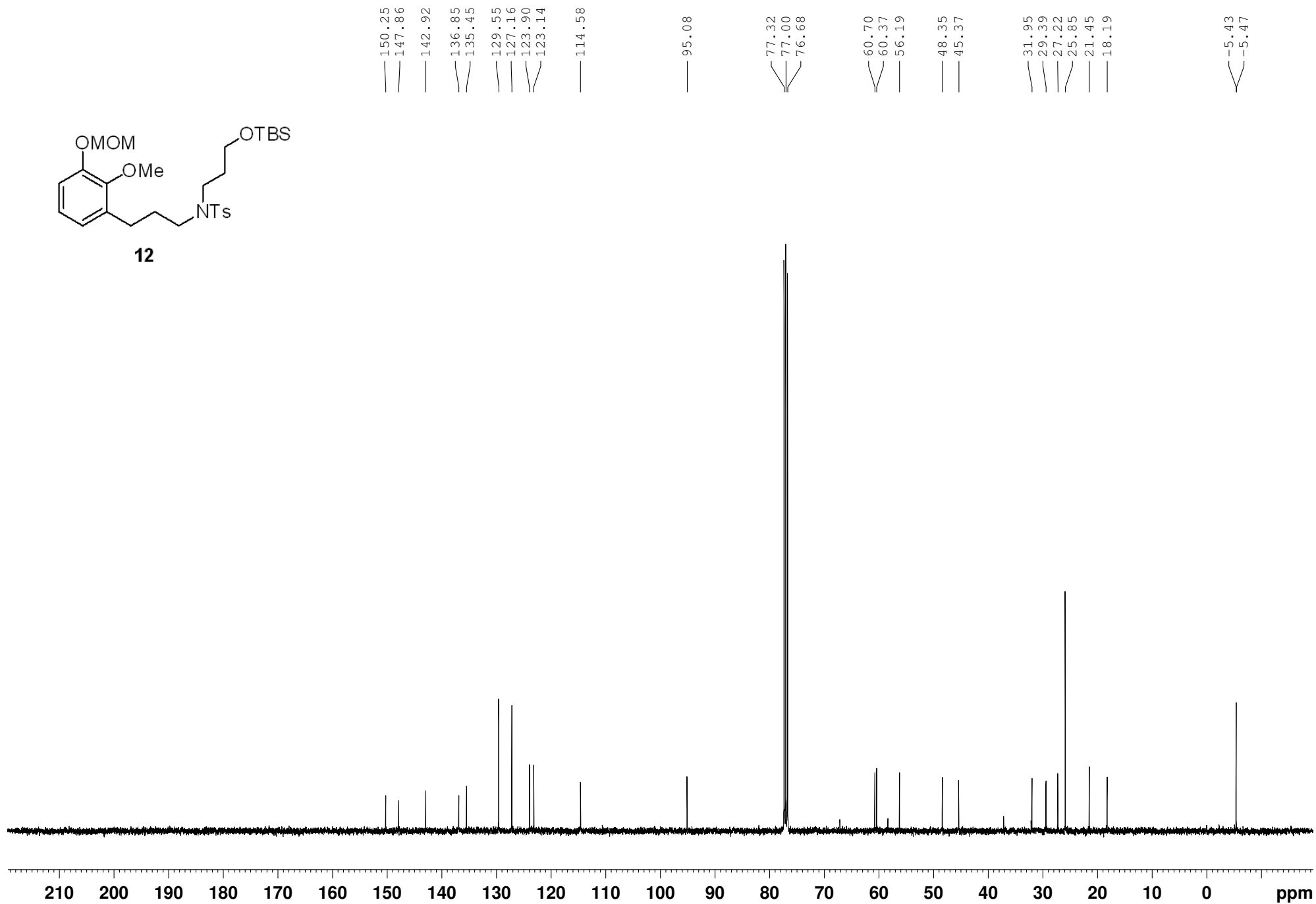
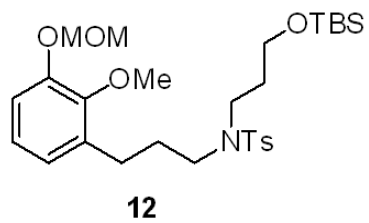


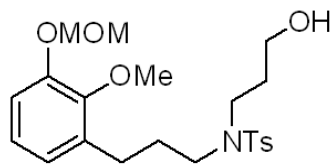


10









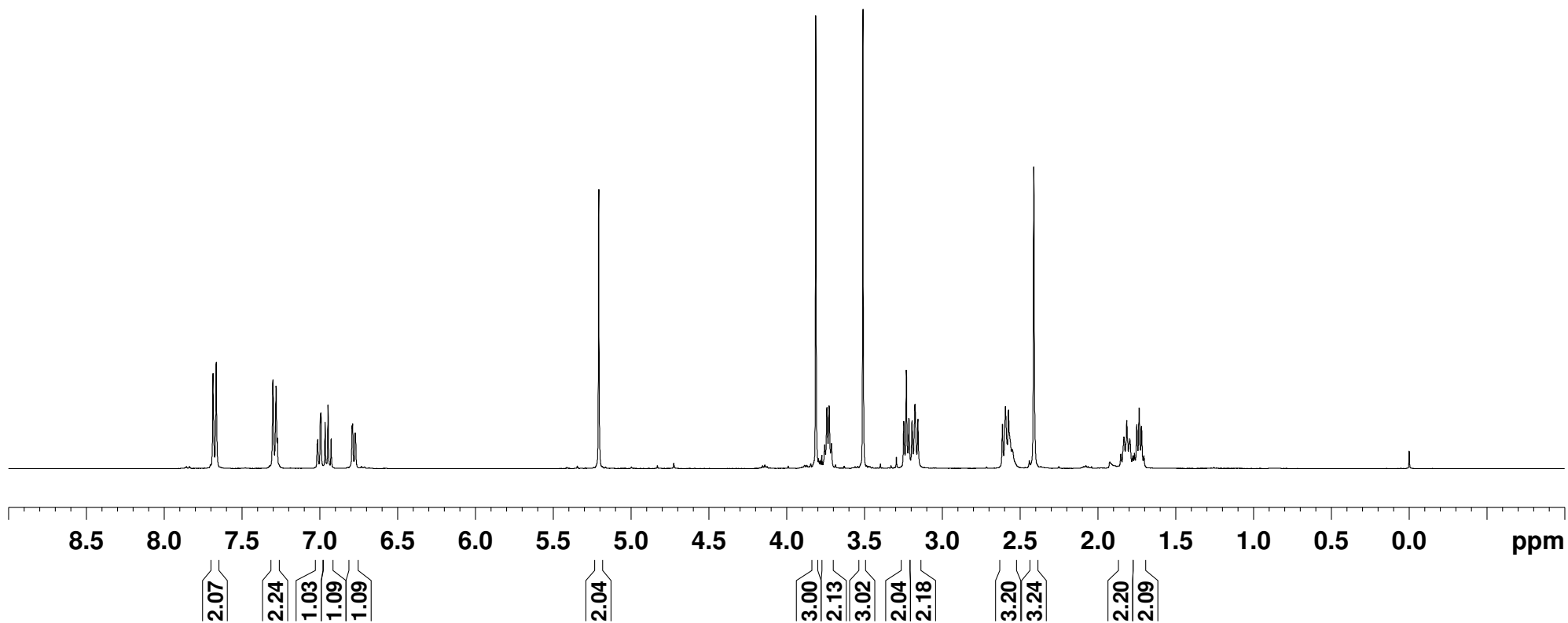
13

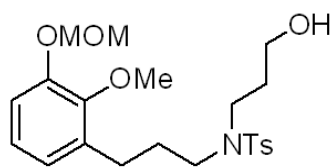
7.68
7.66
7.30
7.28
7.27
7.01
7.01
6.99
6.99
6.96
6.95
6.92
6.79
6.79
6.77
6.77

5.21

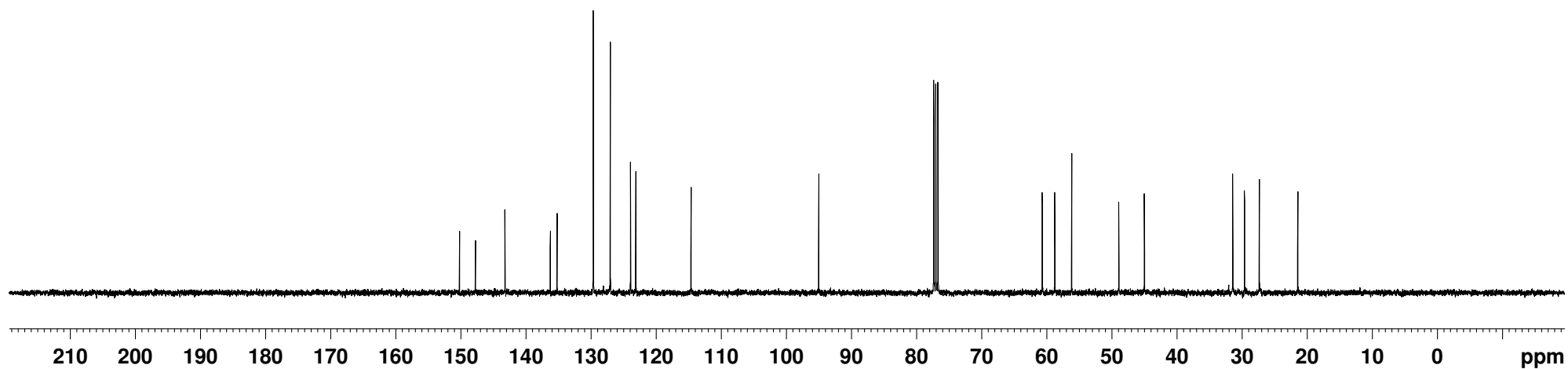
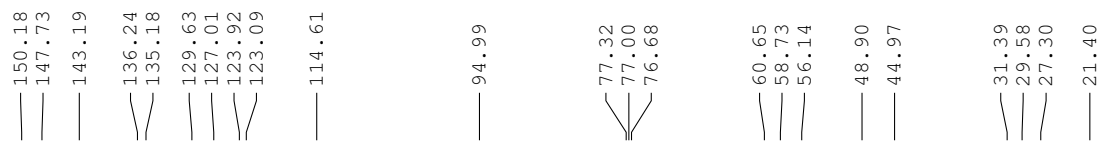
3.81
3.76
3.74
3.73
3.71
3.51
3.25
3.23
3.21
3.19
3.18
3.16
2.61
2.59
2.57
2.55
2.41
1.85
1.83
1.81
1.80
1.78
1.77
1.75
1.74
1.72
1.70

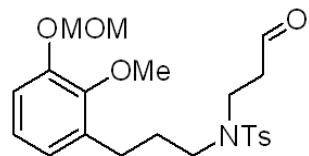
0.00





13





7

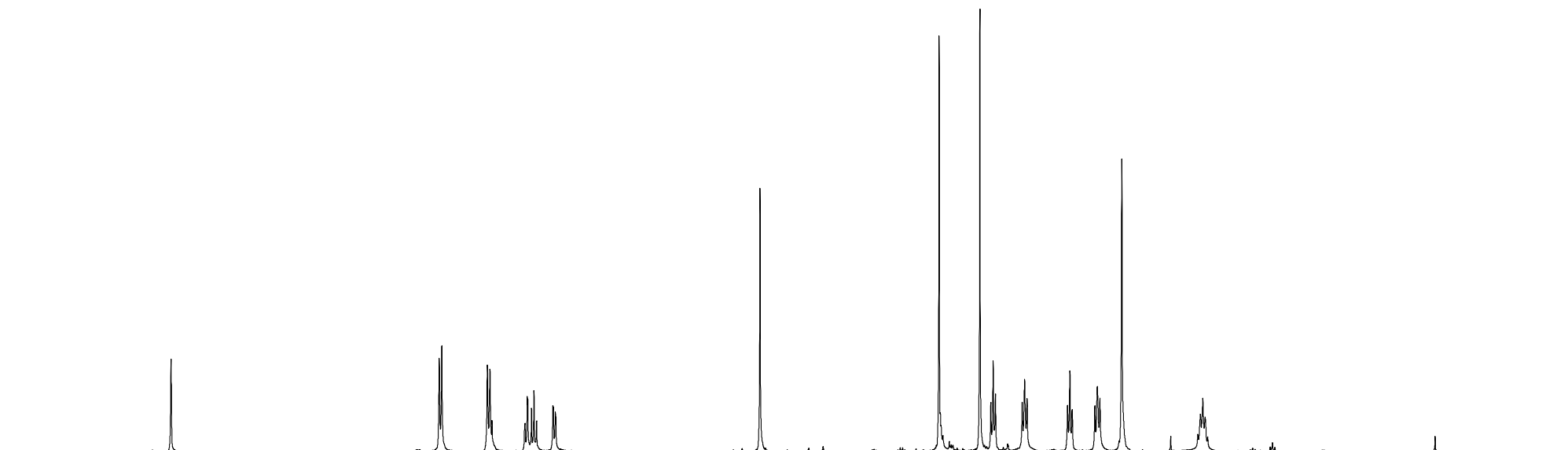
9.74

7.68
7.66
7.31
7.29
7.27
7.02
7.01
7.00
6.99
6.96
6.95
6.93
6.80
6.78
6.78

5.21

3.82
3.51
3.43
3.41
3.39
3.18
3.17
3.15
2.83
2.82
2.80
2.62
2.60
2.58
2.42
1.83
1.81
1.79
1.77
1.75

0.00



10

9

8

7

6

5

4

3

2

1

0

ppm

0.86

2.06

1.92

0.97

1.10

1.06

1.99

2.93

3.00

1.84

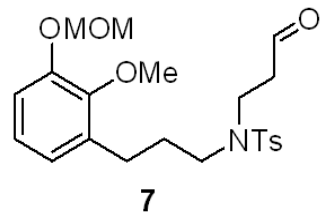
2.14

1.78

2.15

3.30

2.25



— 200.16

— 150.20

— 147.77

— 143.35

— 136.01

— 135.10

— 129.68

— 127.10

— 123.90

— 123.10

— 114.65

— 95.02

— 77.32

— 77.00

— 76.68

— 60.63

— 56.13

— 49.02

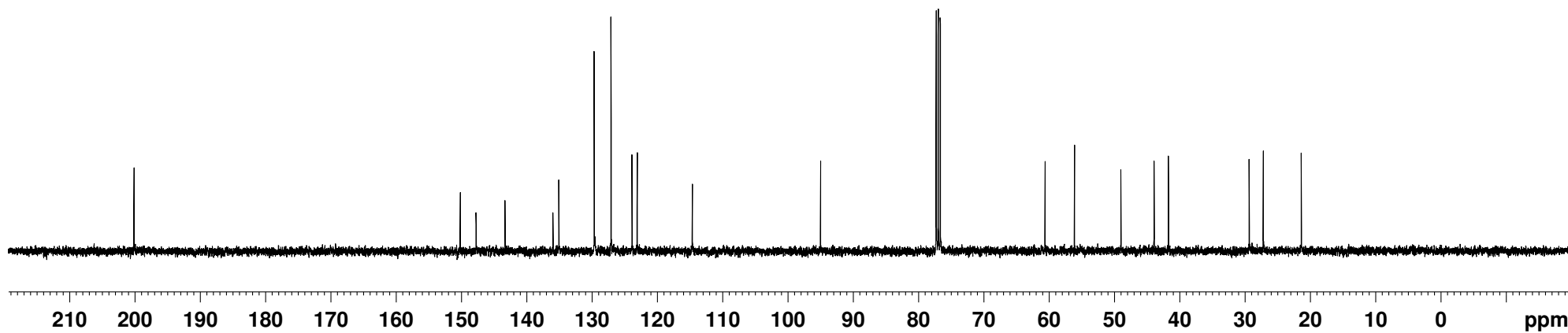
— 43.94

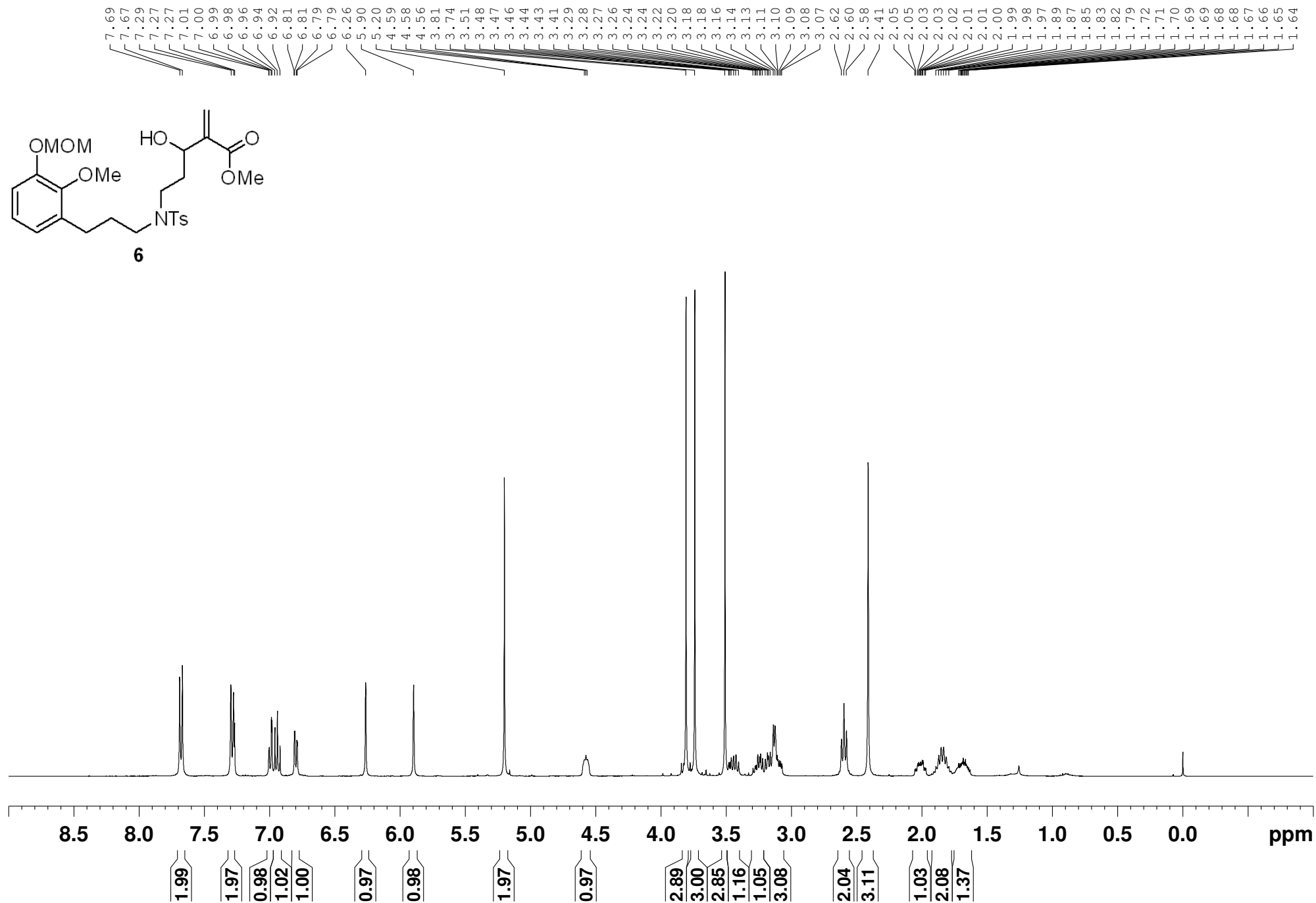
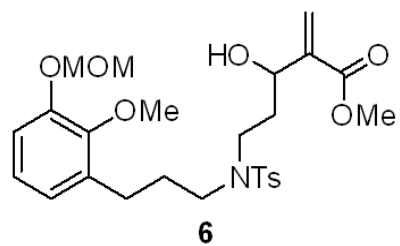
— 41.73

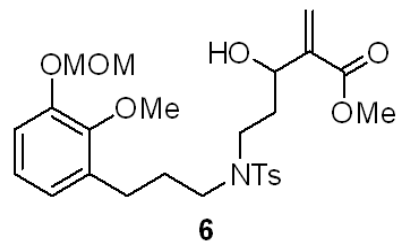
— 29.38

— 27.21

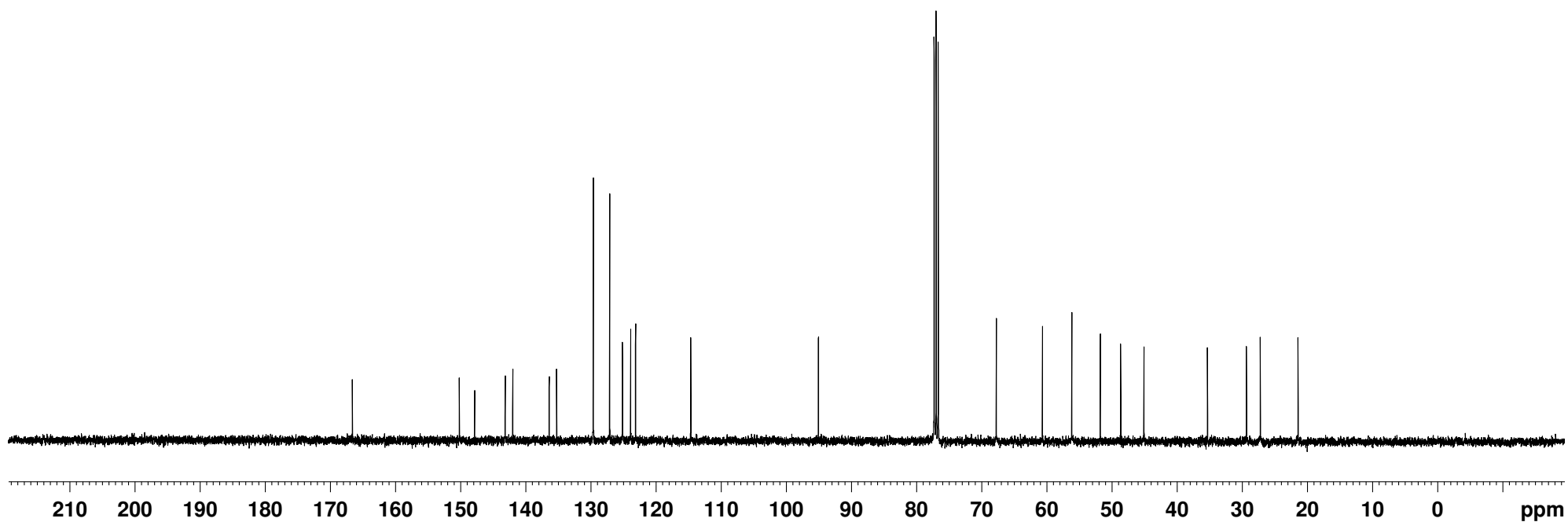
— 21.40

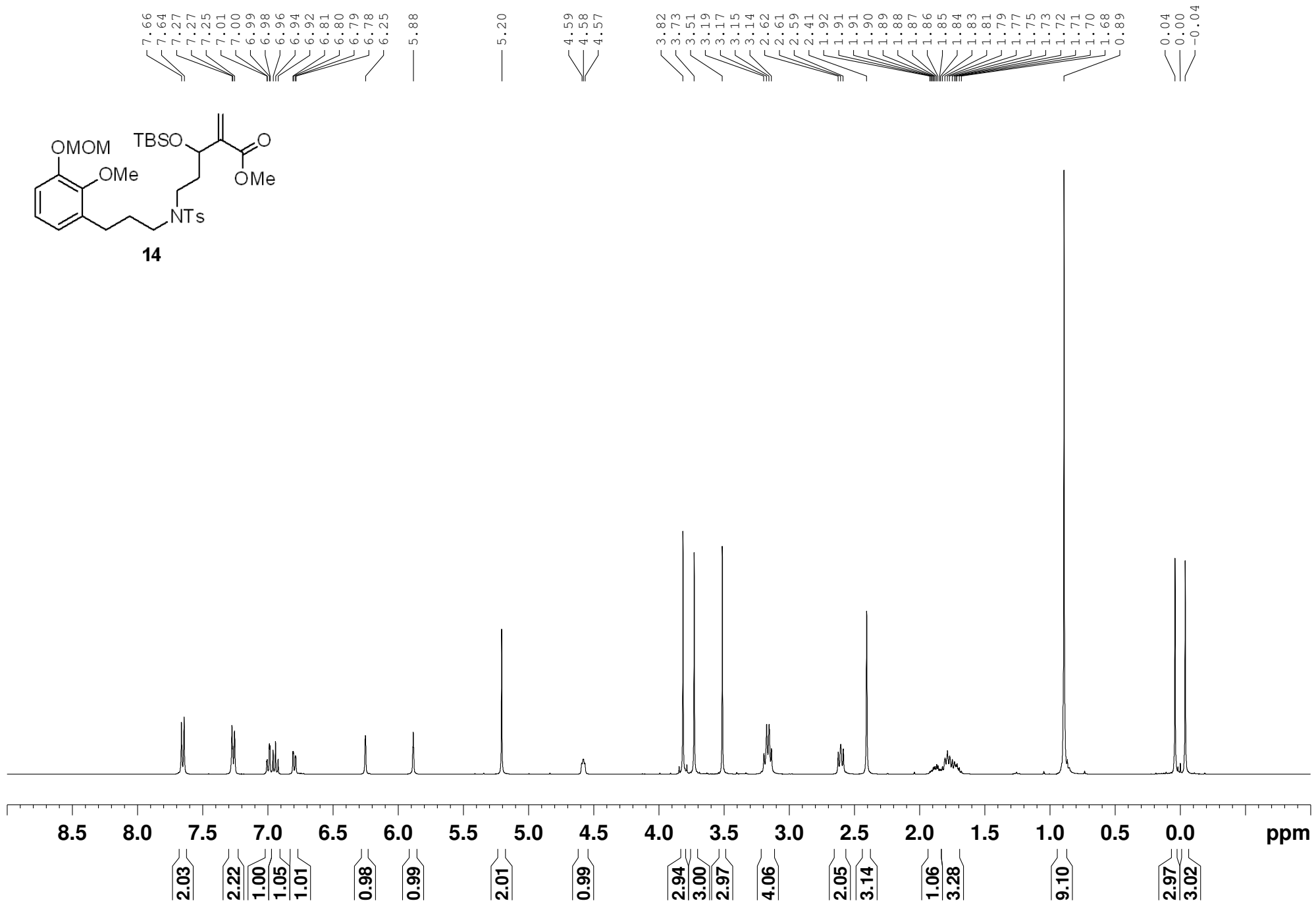


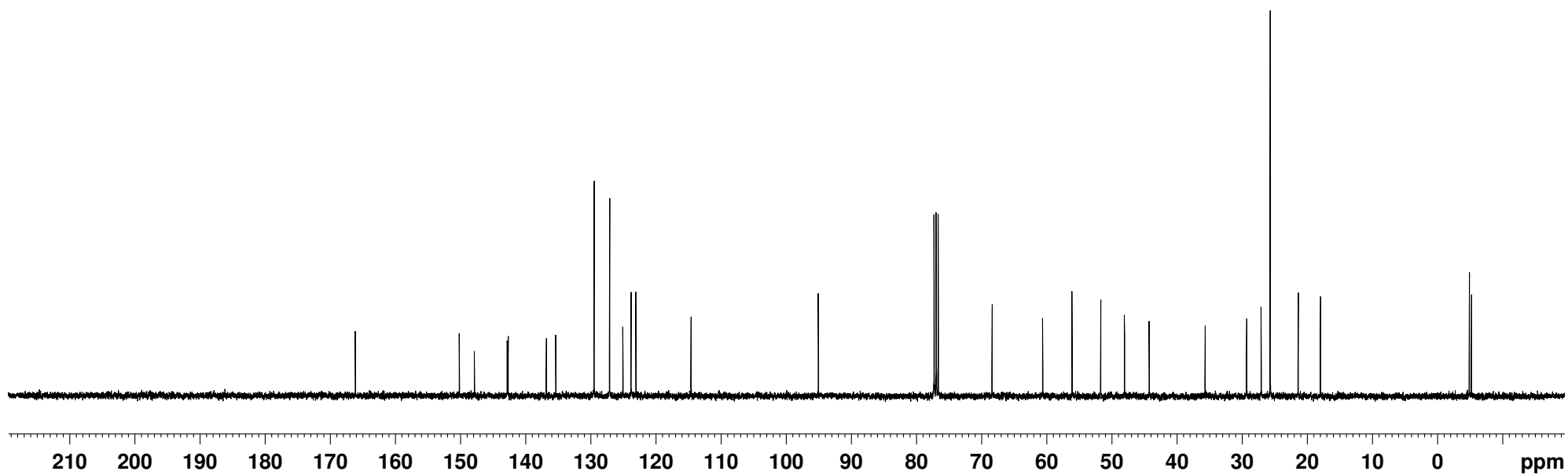
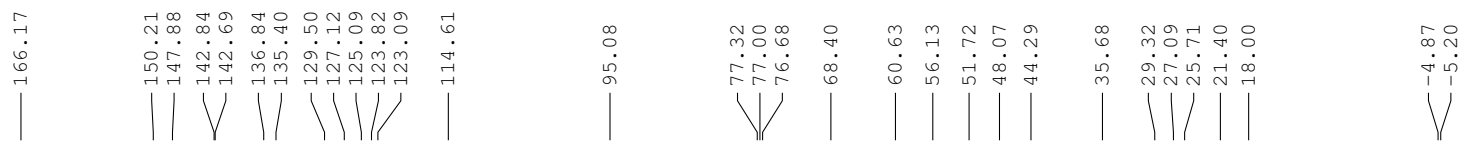
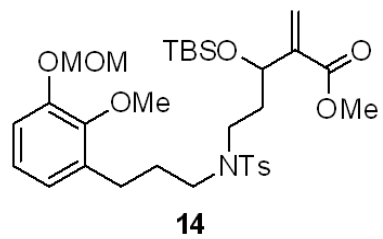


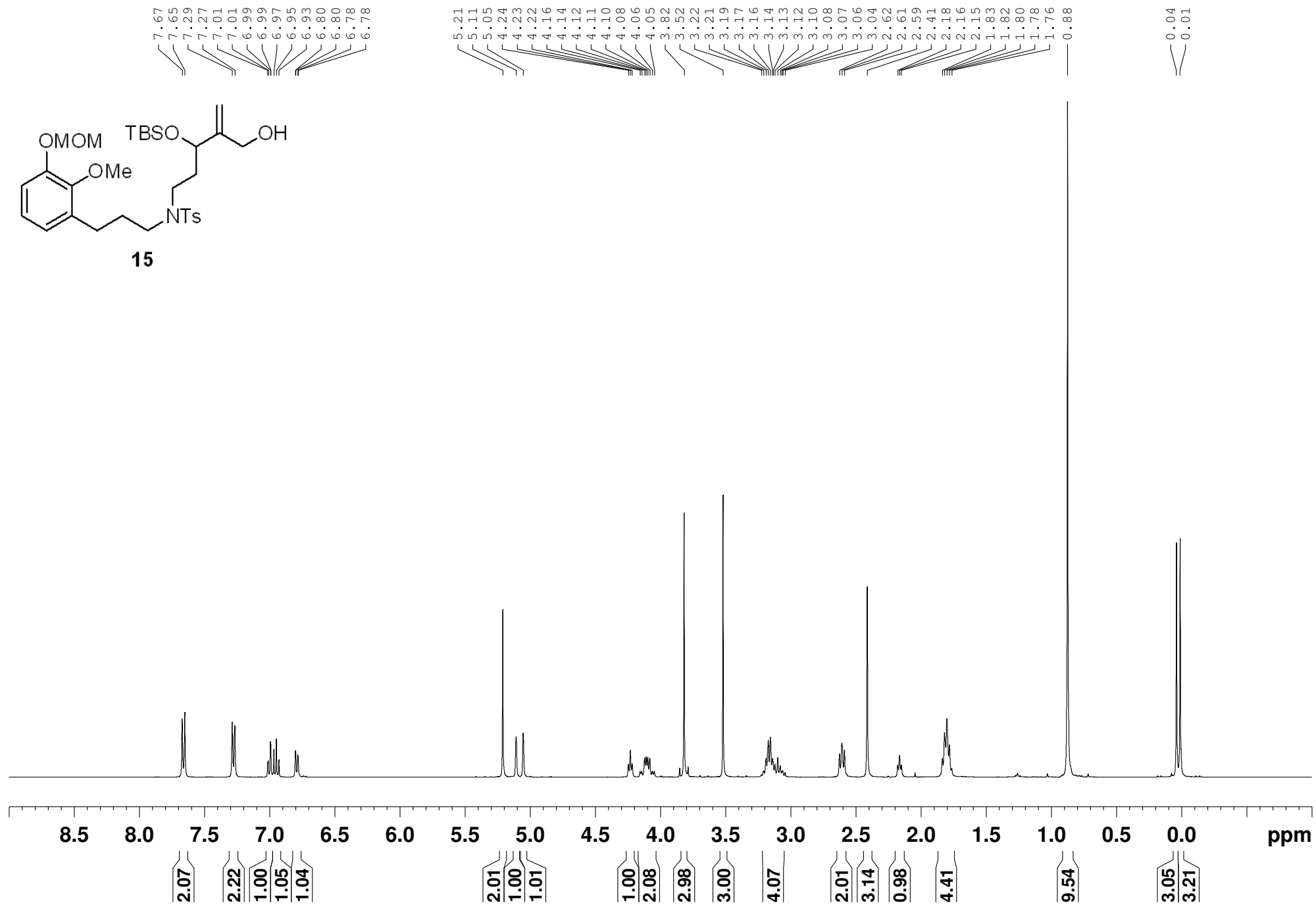
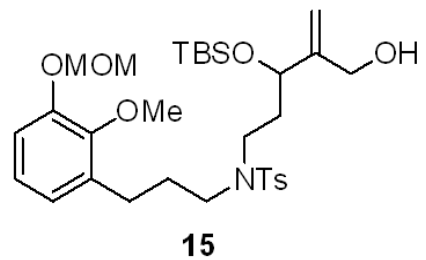


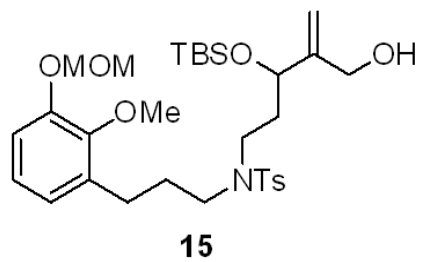
- 166.64
- 150.22
- 147.85
- 143.17
- 142.01
- 136.42
- 135.28
- 129.64
- 127.12
- 125.16
- 123.90
- 123.16
- 114.68
- 95.09
- 77.32
- 77.00
- 76.68
- 67.76
- 60.68
- 56.17
- 51.80
- 48.67
- 45.10
- 35.35
- 29.36
- 27.24
- 21.44



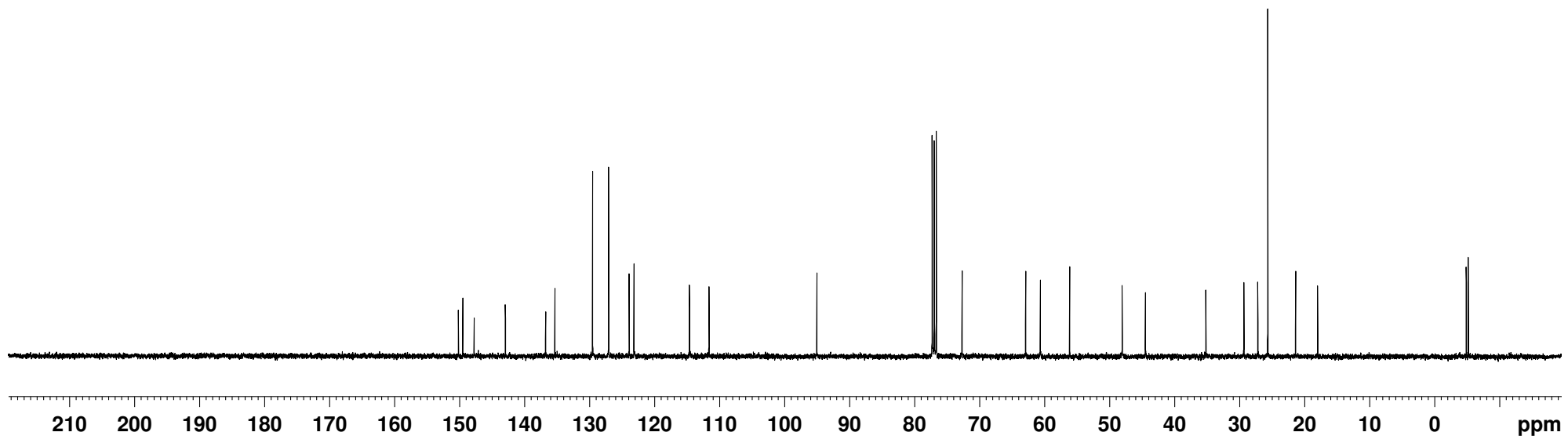


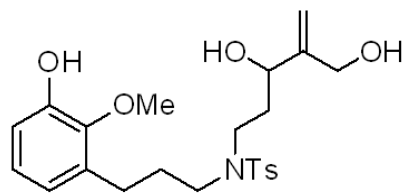




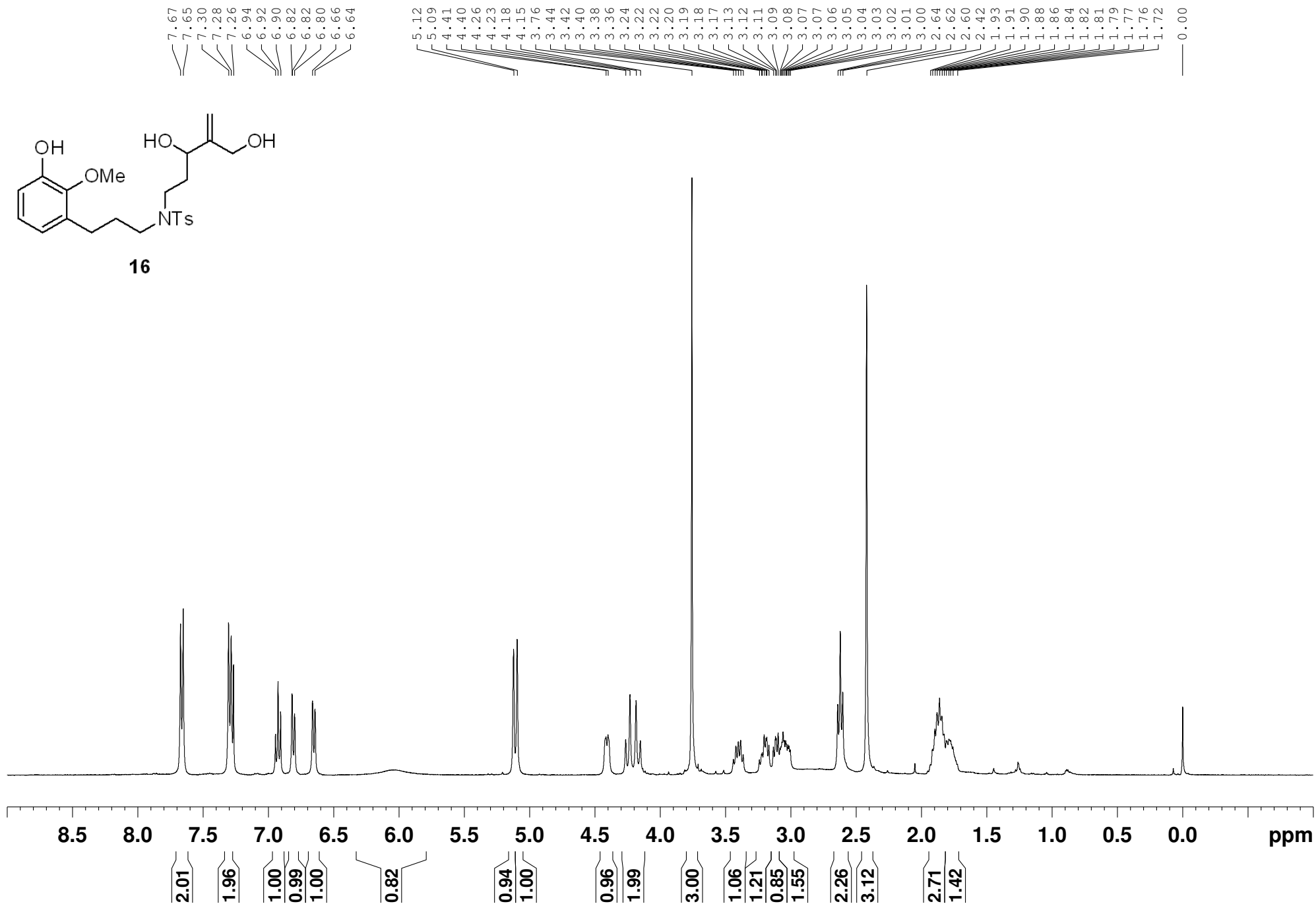


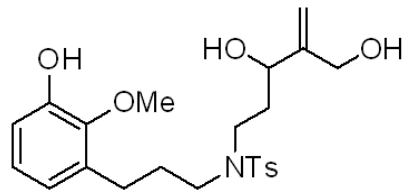
- 150.21
- 149.52
- 147.78
- 142.97
- 136.78
- 135.36
- 129.55
- 127.07
- 123.94
- 123.19
- 114.64
- 111.64
- 95.05
- 77.32
- 77.00
- 76.68
- 72.72
- 62.93
- 60.67
- 56.16
- 48.08
- 44.50
- 35.22
- 29.36
- 27.22
- 25.69
- 21.40
- 18.00
- 4.86
- 5.17





16

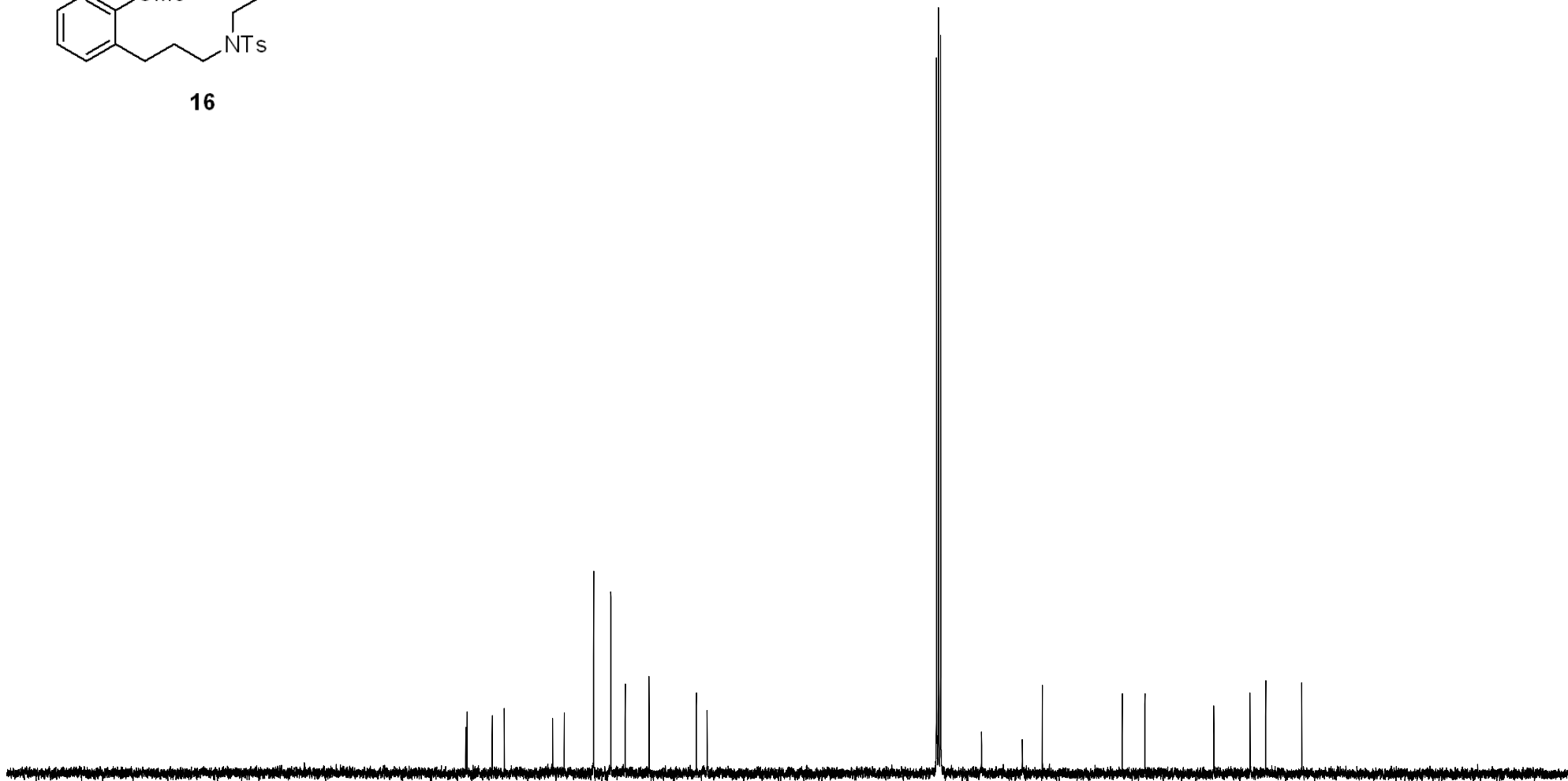




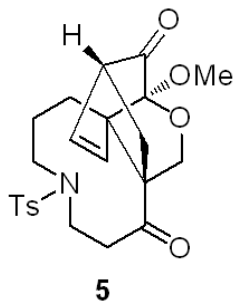
16

149.28
149.07
145.23
143.40
136.00
134.23
129.73
127.10
124.90
121.25
114.04
112.37

77.32
77.00
76.68
70.44
64.20
61.13
48.92
45.45
34.91
29.39
26.99
21.48



210 200 190 180 170 160 150 140 130 120 110 100 90 80 70 60 50 40 30 20 10 0 ppm



7.68
7.66
7.34
7.32
7.29

6.46
6.45
6.43
6.36

4.81

3.88
3.86
3.61
3.44
3.43
3.29
3.28
3.13
2.44
2.27
2.26
2.25
2.23
2.22
2.21
2.20
2.18
2.14
2.04
2.03
2.01
2.00
1.98
1.97
1.96
1.94
1.88
1.79
1.63

0.00

