

**Phenolic Metabolites from Mangrove-Associated *Penicillium pinophilum* Fungus
with Lipid-Lowering Effects**

Supporting Information

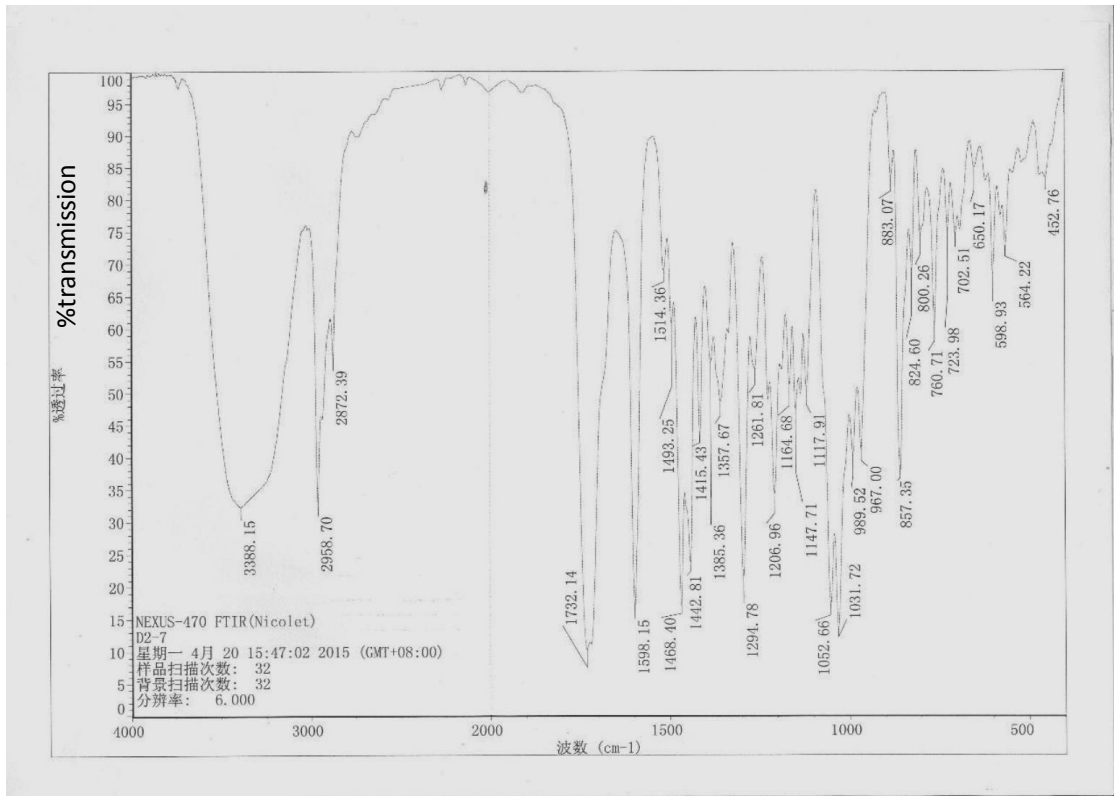


Fig. S1 IR spectrum of compound 1

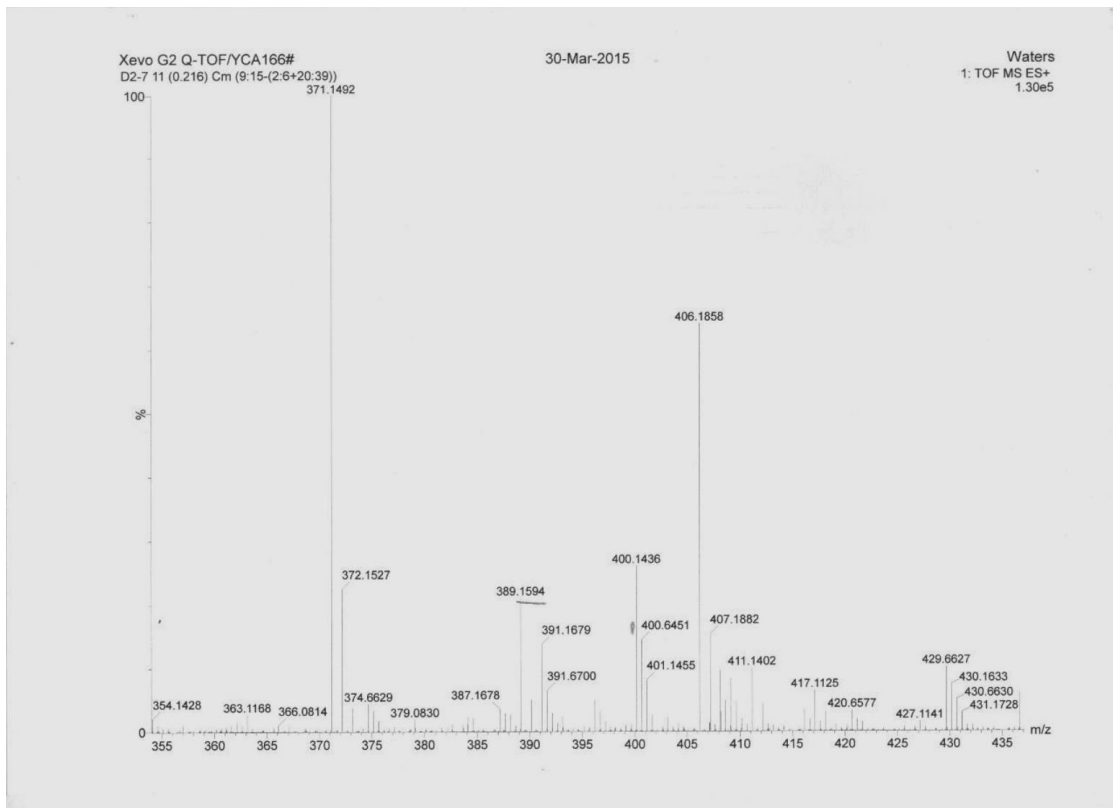


Fig. S2. HRESIMS spectrum of compound 1

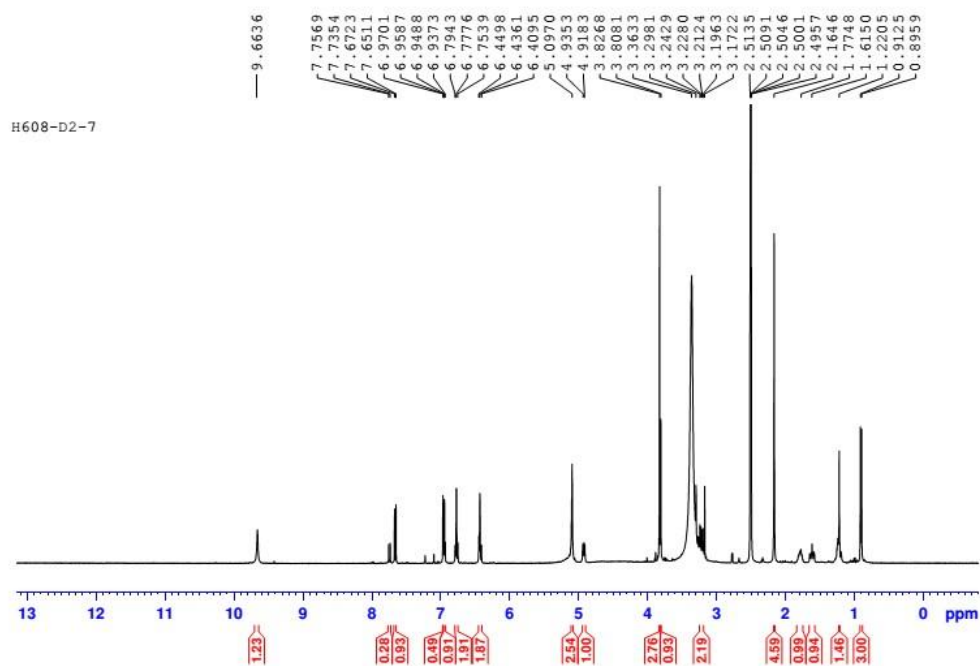


Fig. S3. ^1H NMR spectrum of compound **1**

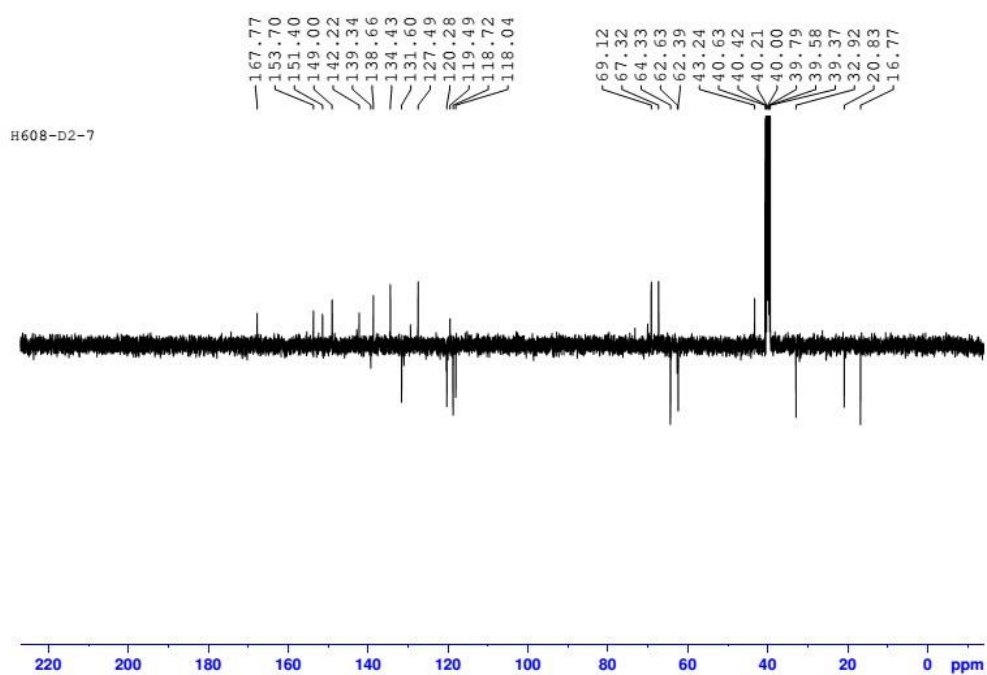


Fig. S4. ^{13}C NMR (APT) spectrum of compound **1**

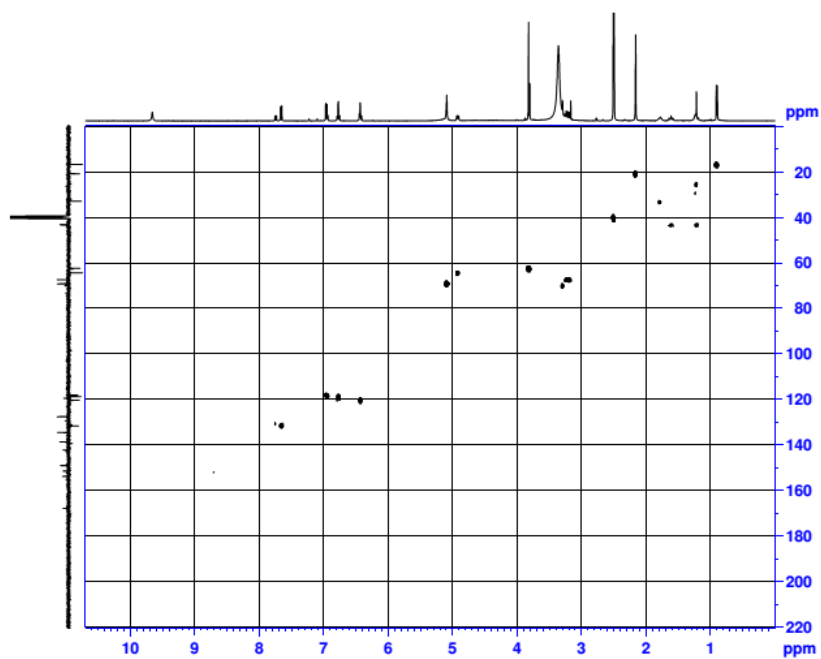


Fig. S5. HMBC spectrum of compound **1**

H608-D2-7

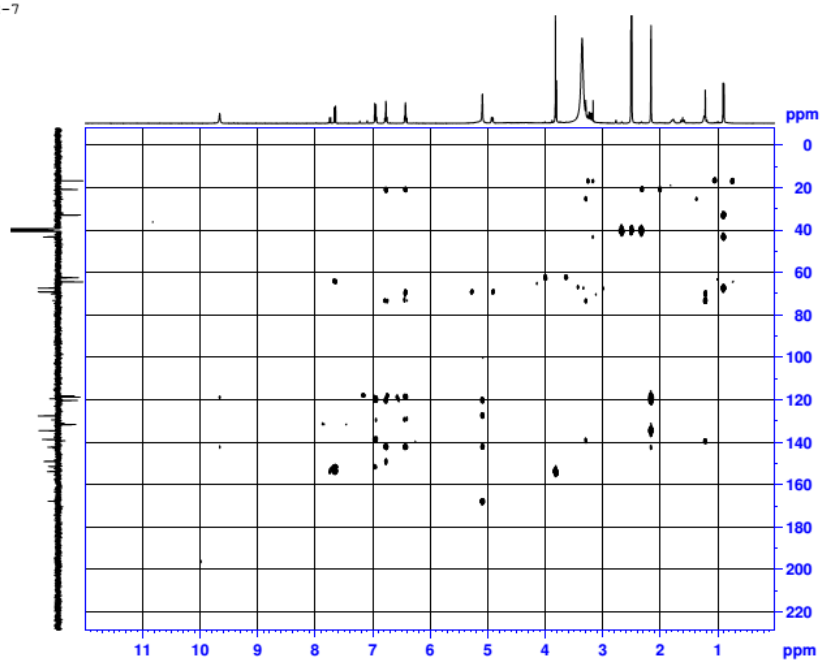


Fig. S6. HMBC spectrum of compound **1**

Table S1. Spectrophotometry at 358 nm after Oil Red O staining for HepG2 cells.

	blk	nc	simv	1	2	3	4	5	6	7	8	9	10	11	12	13	14	15	16
Average	0.252	0.284	0.260	0.275	0.274	0.274	0.269	0.274	0.274	0.271	0.267	0.278	0.276	0.265	0.272	0.271	0.269	0.272	0.275
SEM	0.003	0.002	0.002	0.004	0.003	0.004	0.007	0.004	0.003	0.004	0.003	0.003	0.008	0.003	0.004	0.003	0.004	0.003	0.001

Table S2. Intracellular levels of total cholesterol (TC) for HepG2 cells.

	blk	nc	simv	4	7	8	11	12	13	14	15
Average	57.98	64.92	58.60	52.87	61.77	60.54	57.60	63.60	51.68	49.50	52.68
SEM	1.98	0.91	1.35	1.07	0.87	0.57	3.08	1.15	2.22	3.34	2.01

Table S3. Intracellular levels of total cholesterol (TG) for HepG2 cells.

	blk	nc	simv	4	7	8	11	12	13	14	15
Average	52.98	64.92	58.60	52.87	61.77	60.54	57.60	63.60	51.68	49.50	52.68
SEM	1.98	0.91	1.35	1.07	0.87	0.97	3.08	1.15	2.22	3.34	2.01

Table S4. Spectrophotometry at 358 nm after Oil Red O staining for RAW264.7 macrophages.

	blk	nc	simv	1	2	3	4	5	6	7	8	9	10	11	12	13	14	15	16
Average	0.235	0.273	0.254	0.265	0.261	0.268	0.244	0.265	0.274	0.271	0.260	0.272	0.269	0.256	0.263	0.238	0.246	0.252	0.268
SEM	0.006	0.007	0.006	0.006	0.004	0.005	0.006	0.006	0.007	0.005	0.005	0.005	0.009	0.008	0.007	0.004	0.010	0.006	0.006

Table S5. Intracellular levels of total cholesterol (TC) for RAW264.7 macrophages.

	Blk	NC	Rosig	4	8	11	13	14	15	16
Average	8.72	14.40	10.19	9.23	12.32	11.02	12.45	11.00	9.26	11.24
SEM	0.59	1.00	0.22	0.04	1.18	0.81	0.66	1.25	0.14	0.19

Table S6. Cholesterol efflux rate to HDL.

	Blk	NC	Rosig	4	11	14	15	16
Average	45.28	58.86	63.38	63.92	61.27	62.39	64.88	60.26
SEM	0.82	0.93	0.30	0.13	2.05	0.37	1.08	0.68