

Supplementary Information

Tunable room temperature magnetoelectric response of SmFeO₃/poly (vinylidene fluoride) nanocomposite films

Anju Ahlawat,^{1} Srinibas Satapathy,^{1*} Ram J. Choudhary,² Mandar M. Shirolkar,³ Mrigendra K. Singh¹ and Pradeep K. Gupta¹*

¹Nano-Functional Materials Laboratory, Laser Materials Development & Devices Division, Raja Ramanna Centre for Advanced Technology, Indore 452013, India

²UGC-DAE Consortium for Scientific Research, Indore 452017, India

³Hefei National Laboratory for Physical Sciences at the Microscale, University of Science and Technology of China, Hefei, Anhui 230026, People's Republic of China

Email: anju@rrcat.gov.in; srinu73@rrcat.gov.in

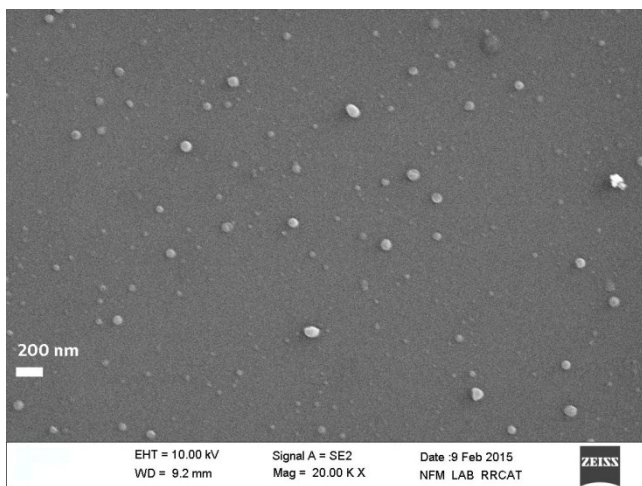


Figure S1. SEM image of SmFeO_3 nanoparticles.

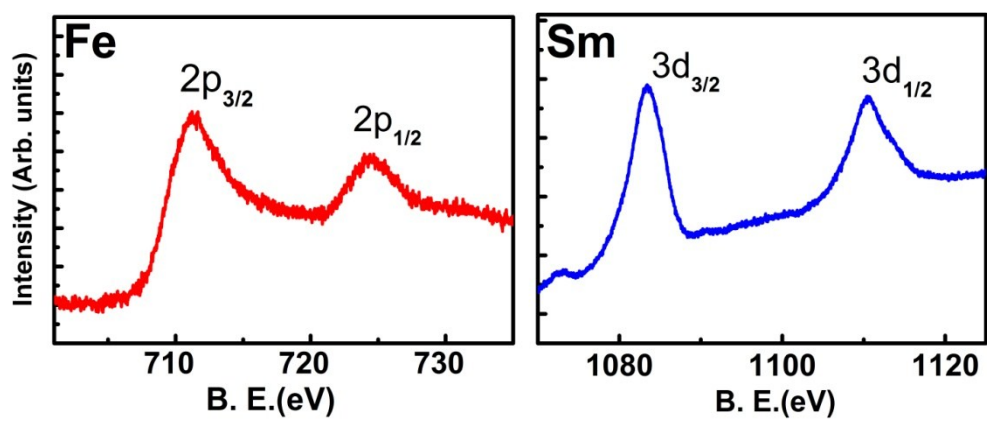


Figure S2. Fe - 2p and Sm - 3d core level spectra of SmFeO_3 nanoparticles.