

Supplementary Information

Influence of over-discharge on the lifetime and performance of

LiFePO₄/graphite batteries

Yong Zheng ^a, Yan-Bing He ^b, Kun Qian ^b, Dan Luo ^b, Yiyang Li ^b, Qingwen Lu ^b,

Baohua Li ^{b,*}, Xindong Wang ^a, Jianling Li ^{a,*}, Feiyu Kang ^b

^a *State Key Laboratory of Advanced Metallurgy, University of Science and Technology Beijing,*

Beijing 100083, China

^b *Engineering Laboratory for Next Generation Power and Energy Storage Batteries, Graduate*

School at Shenzhen, Tsinghua University, Shenzhen 518055, China

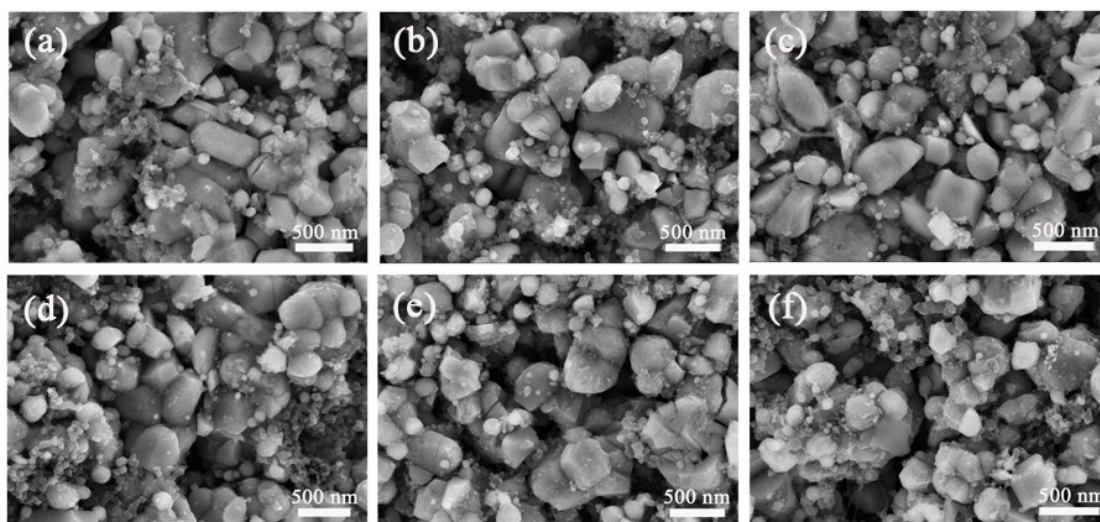


Fig. S1 SEM images of LiFePO₄ electrodes before and after cycling: (a) Fresh LiFePO₄, and aged at (b) 2.0 V; (c) 1.5 V; (d) 1.0 V; (e) 0.5 V and (f) 0.0 V.

*Corresponding author: Baohua Li . Tel. / fax.: +86 755 26036419. E-mail address: libh@mail.sz.tsinghua.edu.cn.
Jianling Li . Tel. / fax.: +86 10 62332651. E-mail address: lijianling@ustb.edu.cn.

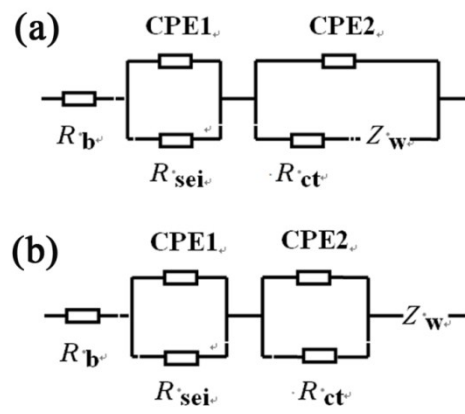


Fig. S2 Equivalent circuit models for fitting the LiFePO₄/graphite power batteries.