

SUPPORTING INFORMATION

Rheological Property and Crystallization Behavior of Comb-like Graft Poly(L-lactide): Influences of Graft Length and Graft Density

Xuefei Leng, Zhiyong Wei, Yufei Bian, Yingying Ren, Yurong Wang, Qinyi Wang, Yang Li*

State Key Laboratory of Fine Chemicals, Department of Polymer Science and Engineering, School of Chemical Engineering, Dalian University of Technology, Dalian 116024, Liaoning, China

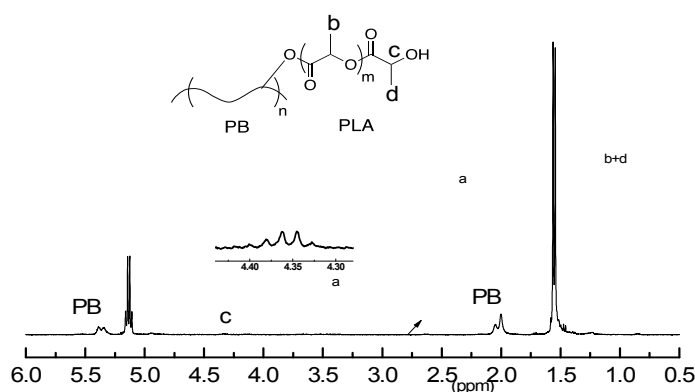


Figure S1. ^1H NMR spectra of comb-like graft PLLA.

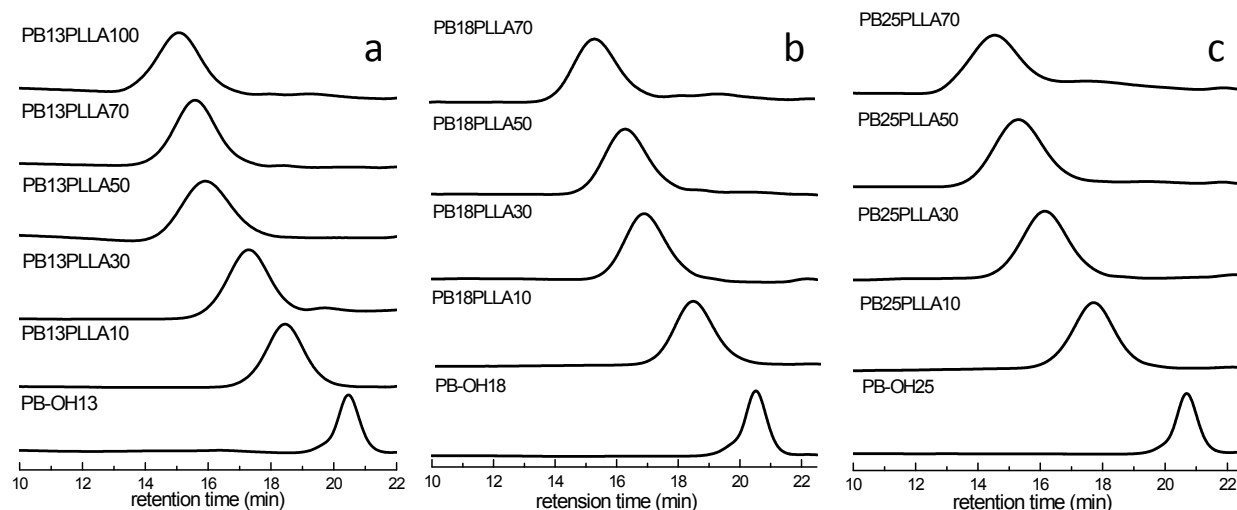


Figure S2. GPC spectrum of comb-like graft PLLA: (a) PB13PLLA, initiated by PB-OH13; (b) PB18PLLA, initiated by PB-OH18; (c) PB25PLLA, initiated by PB-OH25.

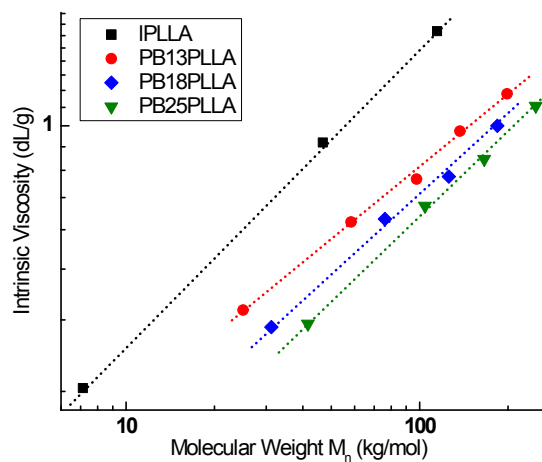


Figure S3. Intrinsic viscosities versus molecular weight of the linear PLLA (IPLLA) and graft PLLA (PB13PLLA, PB18PLLA and PB25PLLA).

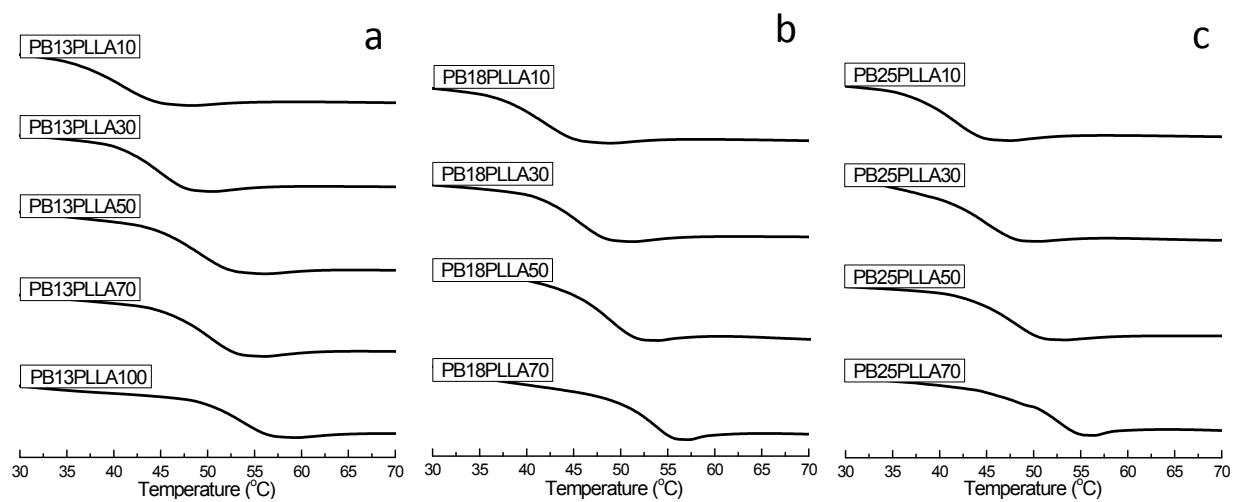


Figure S4. DSC curves of comb-like PLLA: (a) PB13PLLA; (b) PB18PLLA; (c) PB25PLLA.