

Electronic Supplementary Information (ESI)

Nonclassical from-Shell-to-Core Growth of Hierarchically Organized SAPO-11 with Enhanced Catalytic Performance in Hydroisomerization of n-Heptane

Dongliang Jin^a, Zhiting Liu^a, Jingwei Zheng^a, Weiming Hua^{b*}, Jiao Chen^a, Kake Zhu^{a*} and Xinggui Zhou^a

^aUNILAB, State Key Laboratory of Chemical Engineering, East China University of Science and Technology, 130 Meilong road, Shanghai 200237, P. R. China

^bShanghai Key Laboratory of Molecular Catalysis and Innovative Materials, Department of Chemistry, Fudan University, Shanghai 200433, P. R. China

E-mail: kakezhu@ecust.edu.cn, wmhua@fudan.edu.cn

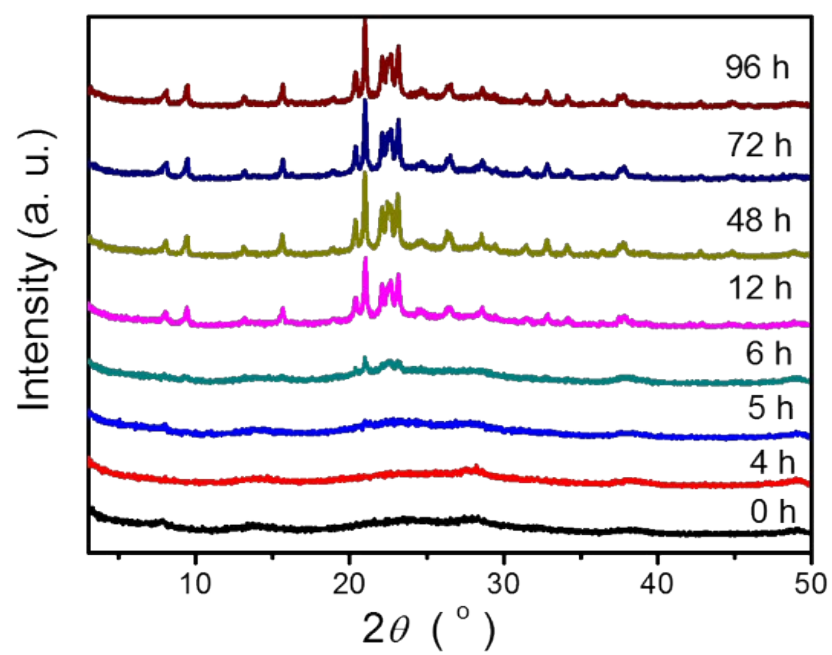


Fig. S1 Time-dependent XRD patterns in the synthesis of SAPO-11-C.

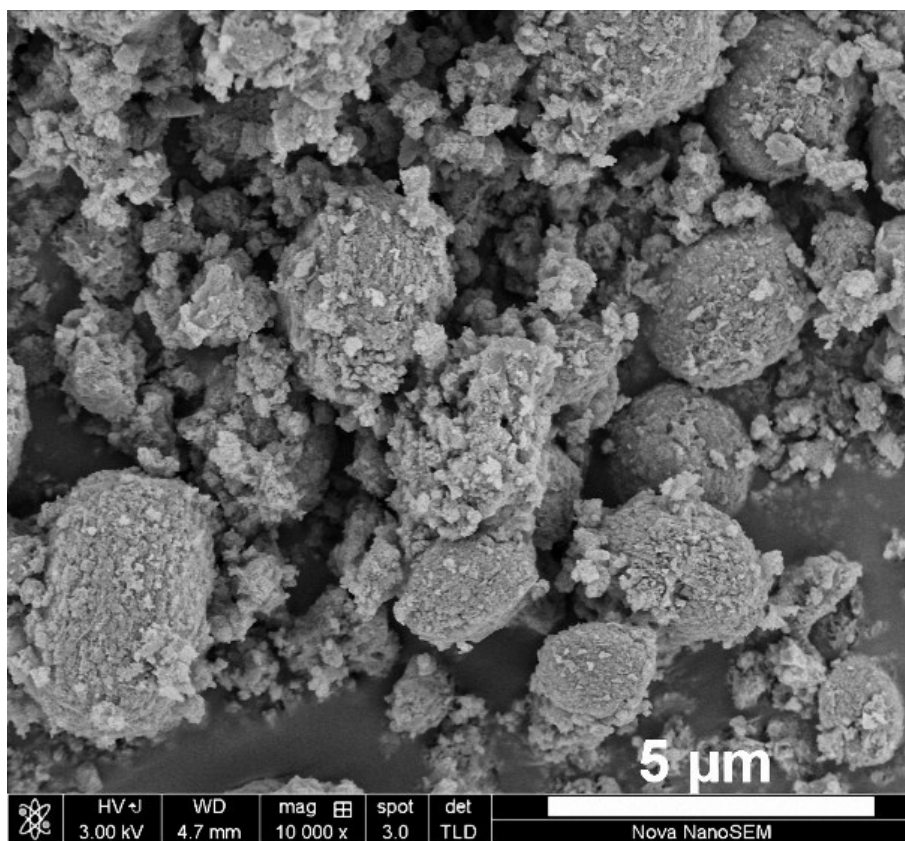


Fig. S2 The panoramic SEM image for crystallization of SAPO-11-H after crystallization of 1 h.

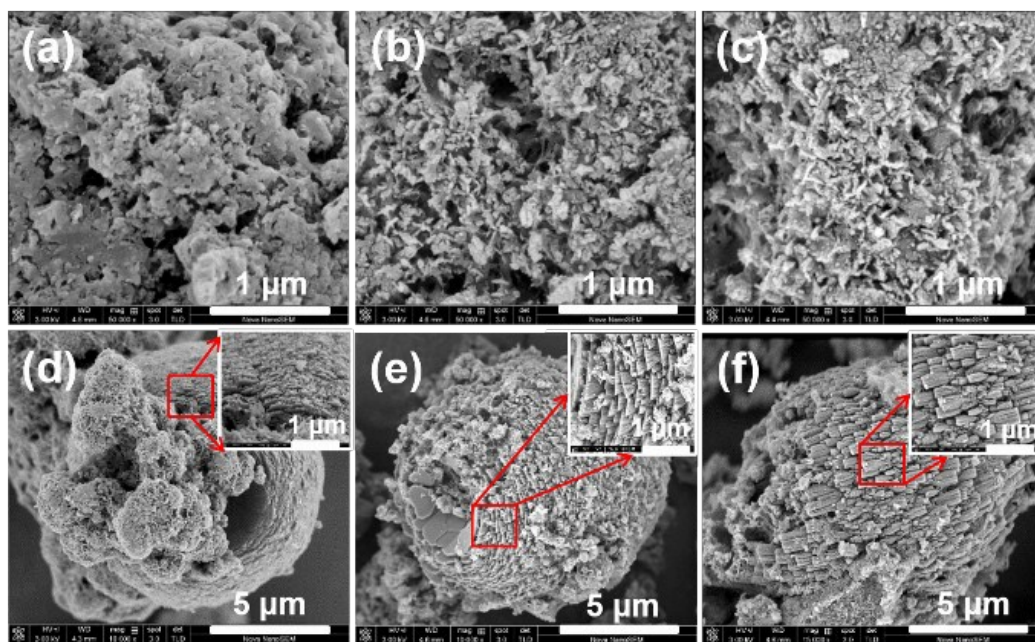


Fig. S3 The SEM images for samples crystallized for varied time duration in the synthesis of SAPO-11-C. (a) 0 h, (b) 4 h, (c) 5 h, (d) 6 h, (e) 12 h, (f) 96 h.

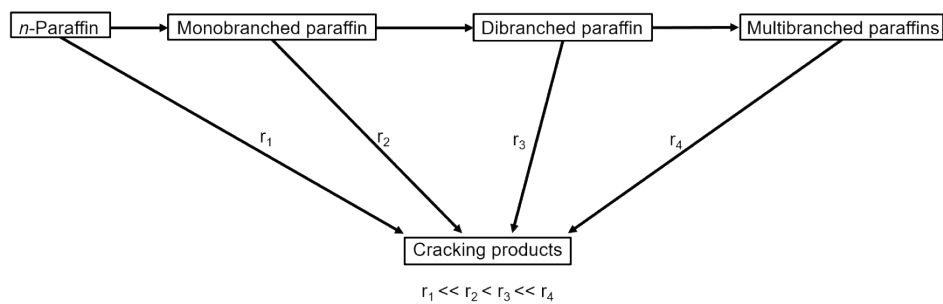


Fig. S4 Reaction scheme for the formation of isomers and cracking products. r represents the cracking rate constants (modified from ref. 1, page 609.).