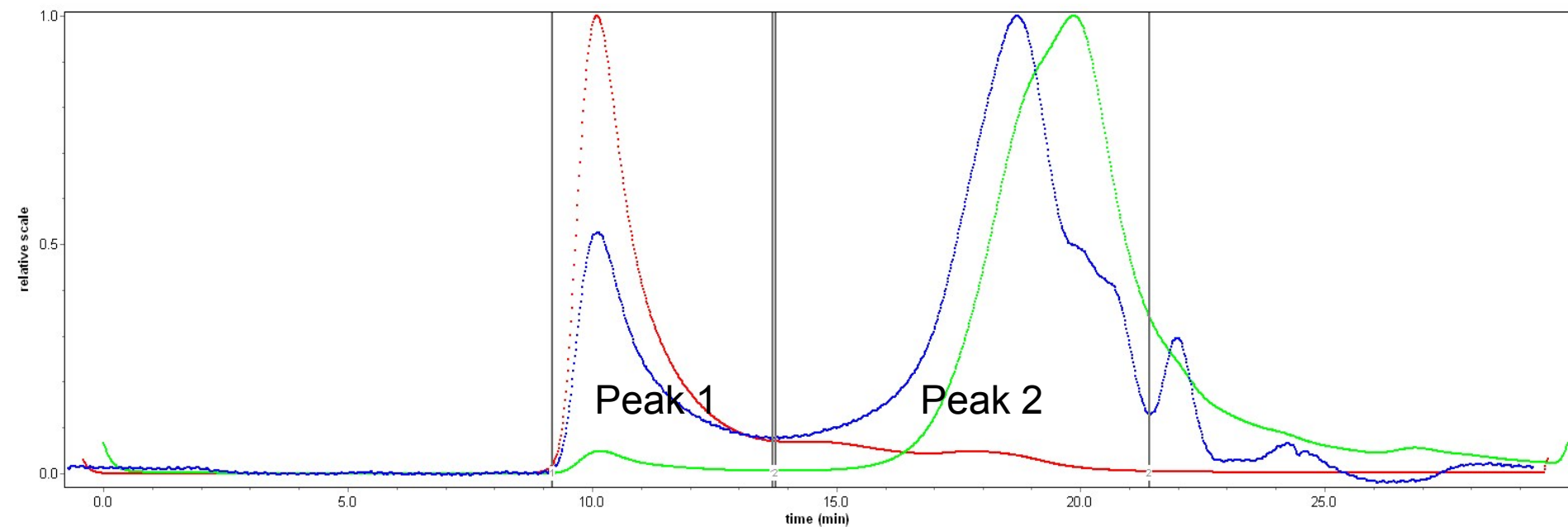


GLP



## Supplementary material 2.

Antitumor test of DDP and GLP in Caco-2 and S180 cells *in vitro*

		DDP	GLP
		Inhibition rate (%)	
Caco-2 cells			
Sample concentrations (μg/mL)			
10		-2.37±2.41	-1.11±1.45
50		1.69±2.02	-0.98±1.09
100		-1.64±1.95	-0.68±1.53
200		0.07±1.18	1.07±2.01
500		-2.42±2.19	1.37±1.82
S180 cells			
Sample concentrations (μg/mL)			
10		1.25±1.23	-1.25±1.84
50		-1.38±0.98	-2.08±2.02
100		-0.78±1.66	1.17±1.64
200		-1.08±1.47	-1.07±1.11
500		2.04±2.15	2.14±1.91

Means expressed with SD were determined in triplicate for each cultivar.