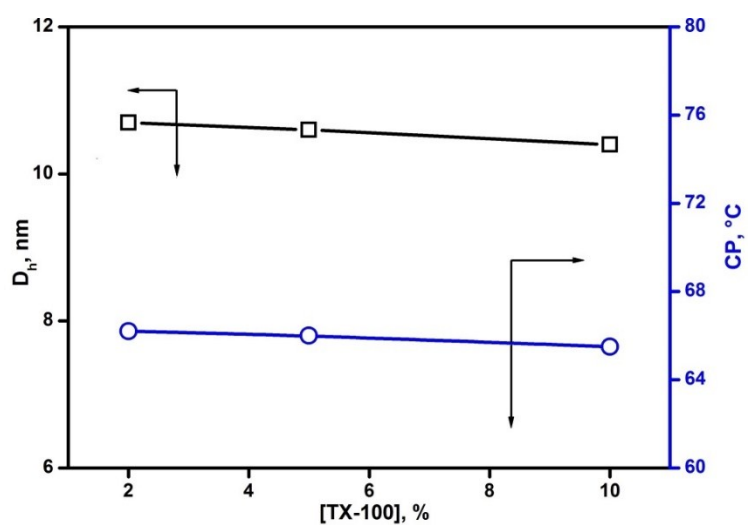
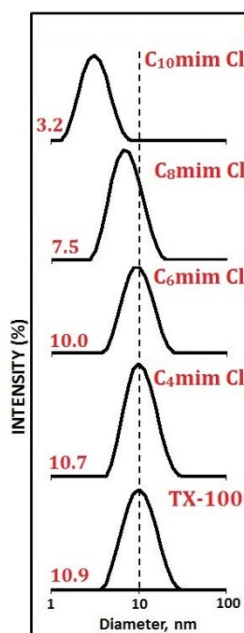


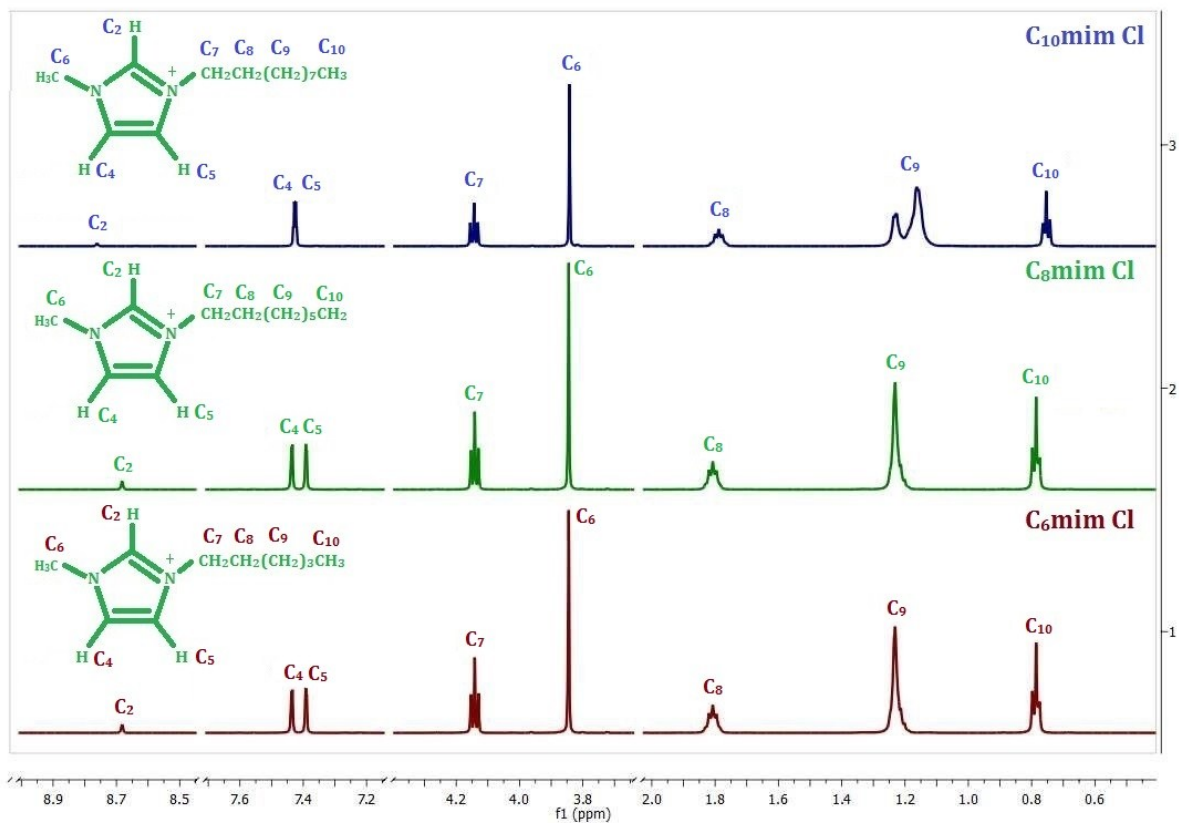
Supplementary material:



SM1: Effect of concentration on (○) CP and (□) D_h of TX-100 micelles



SM2: Size distribution curve for 5% TX-100 in the presence of 20 mM C_nmim Cl (n=4,6,8 and 10) ILs at 30°C



SM3: ^1H NMR Spectra of $\text{C}_n\text{mim Cl}$ in D_2O at $30\text{ }^\circ\text{C}$