

Supplementary Figure S1: Comparison of the static contact angles on the titanium samples: (a) untreated-Ti, $88\pm 5.3^\circ$; (b) Micro-Ti, $81\pm 4.9^\circ$; (c) Nano-Ti, $27\pm 2.6^\circ$; and (d) Micro/Nano-Ti, $21\pm 2.1^\circ$.

Supplementary Figure S2: The alkaline phosphatase (ALP) staining of cells on titanium samples at 14 days: (a) Group A, untreated-Ti; (b) Group b, Micro-Ti; (c) Group C, Nano-Ti; and (d) Group D.

Supplementary Figure S3: The expression of integrin $\beta 1$ was detected by immunofluorescence assay. “Merge” represent the merged images of actin, integrin $\beta 1$ and nuclei.

Supplementary Figure S4: The expression of vinculin was detected by immunofluorescence assay. “Merge” represent the merged images of actin, vinculin and nuclei.

Supplementary Figure S5: The expression of OCN and OPN were detected by immunofluorescence assay. “Merge” represent the merged images of OCN, OPN and nuclei.



(a) Untreated-Ti



(b) Micro-Ti

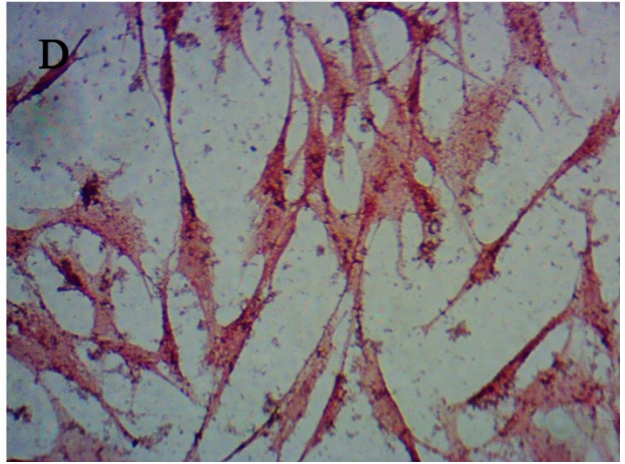
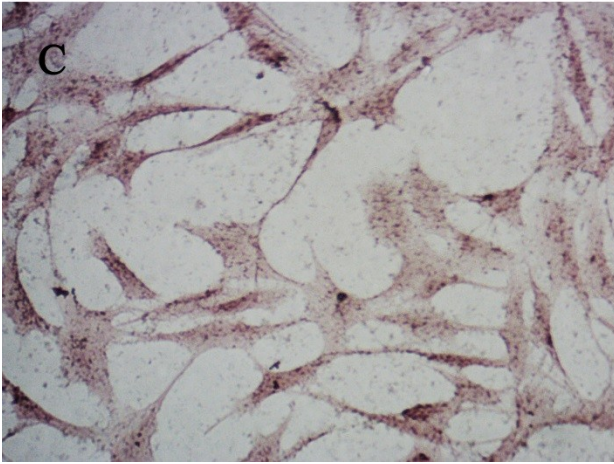
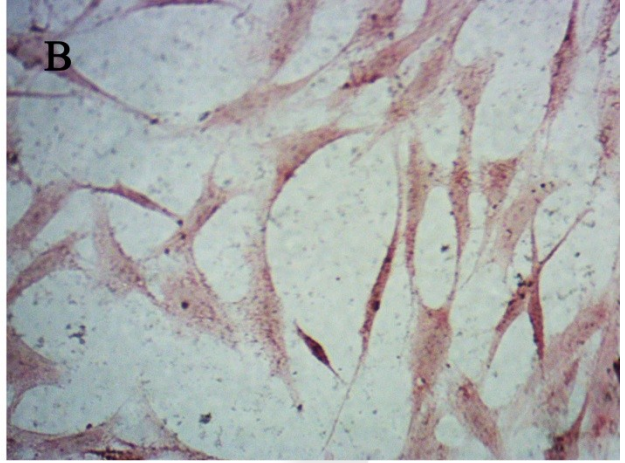
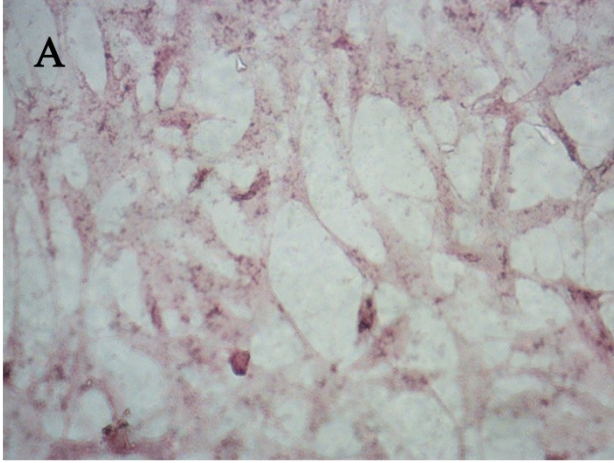


(c) Nano-Ti

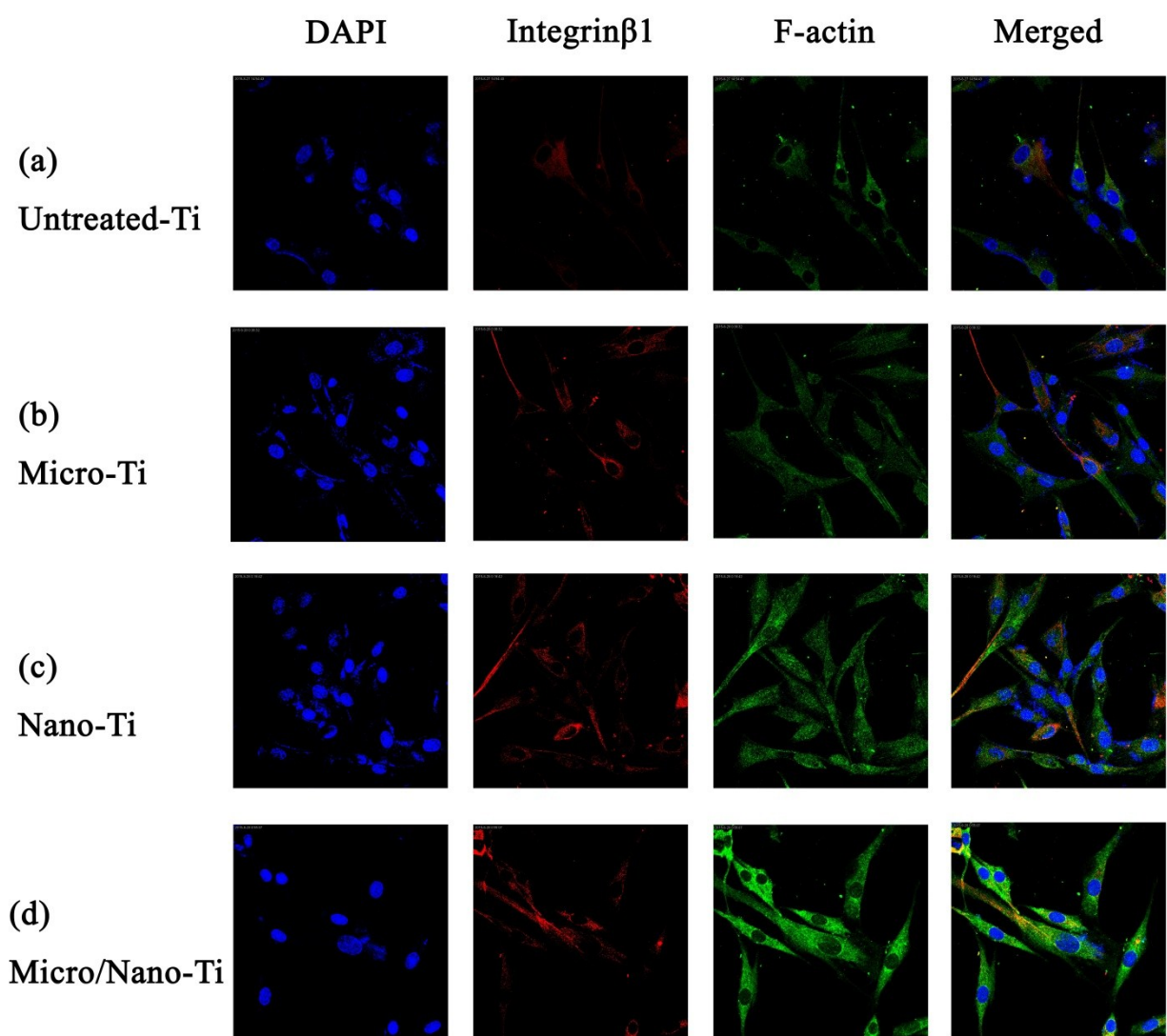


(d) Micro/Nano-Ti

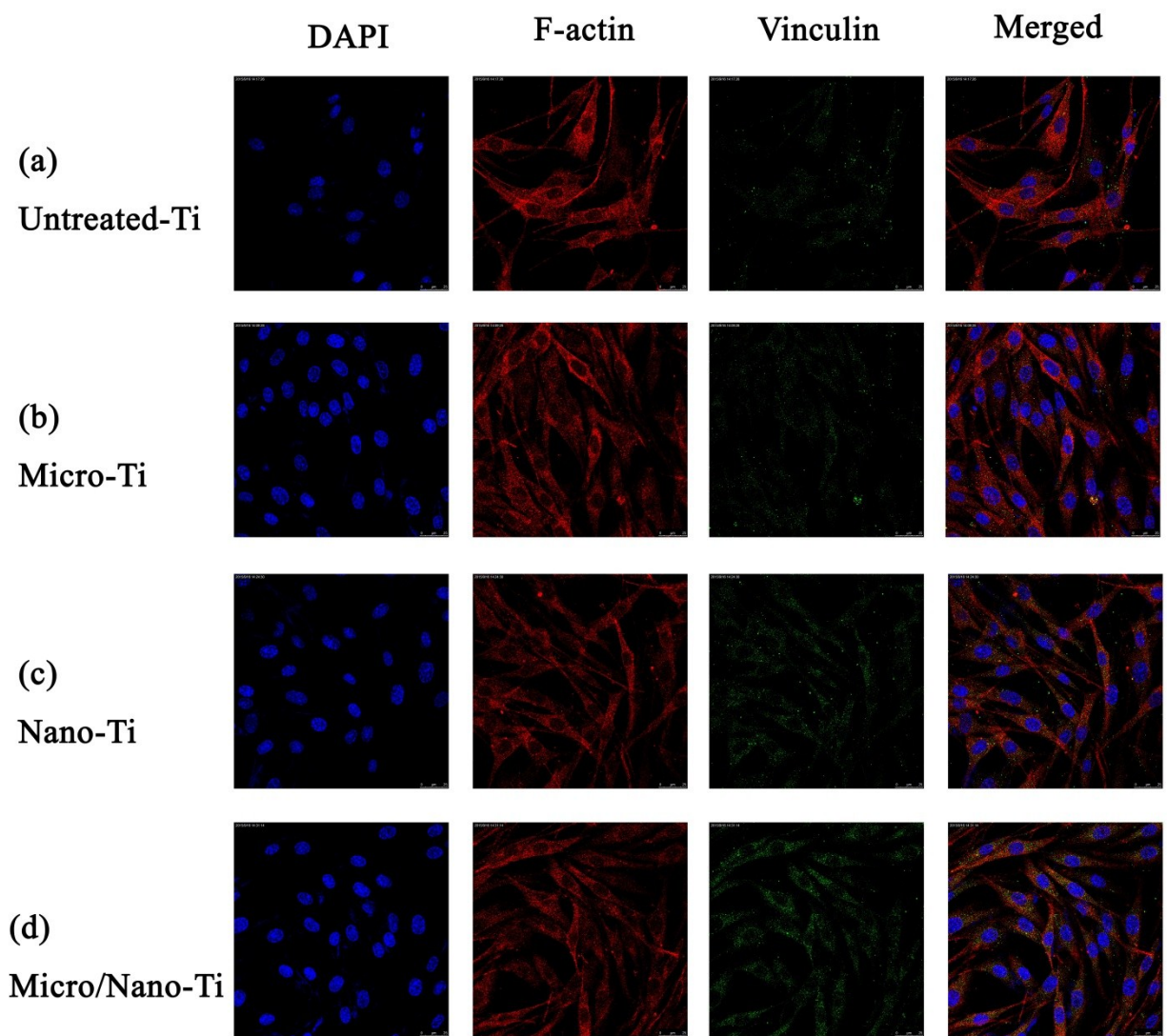
Supplementary_Fig._S1



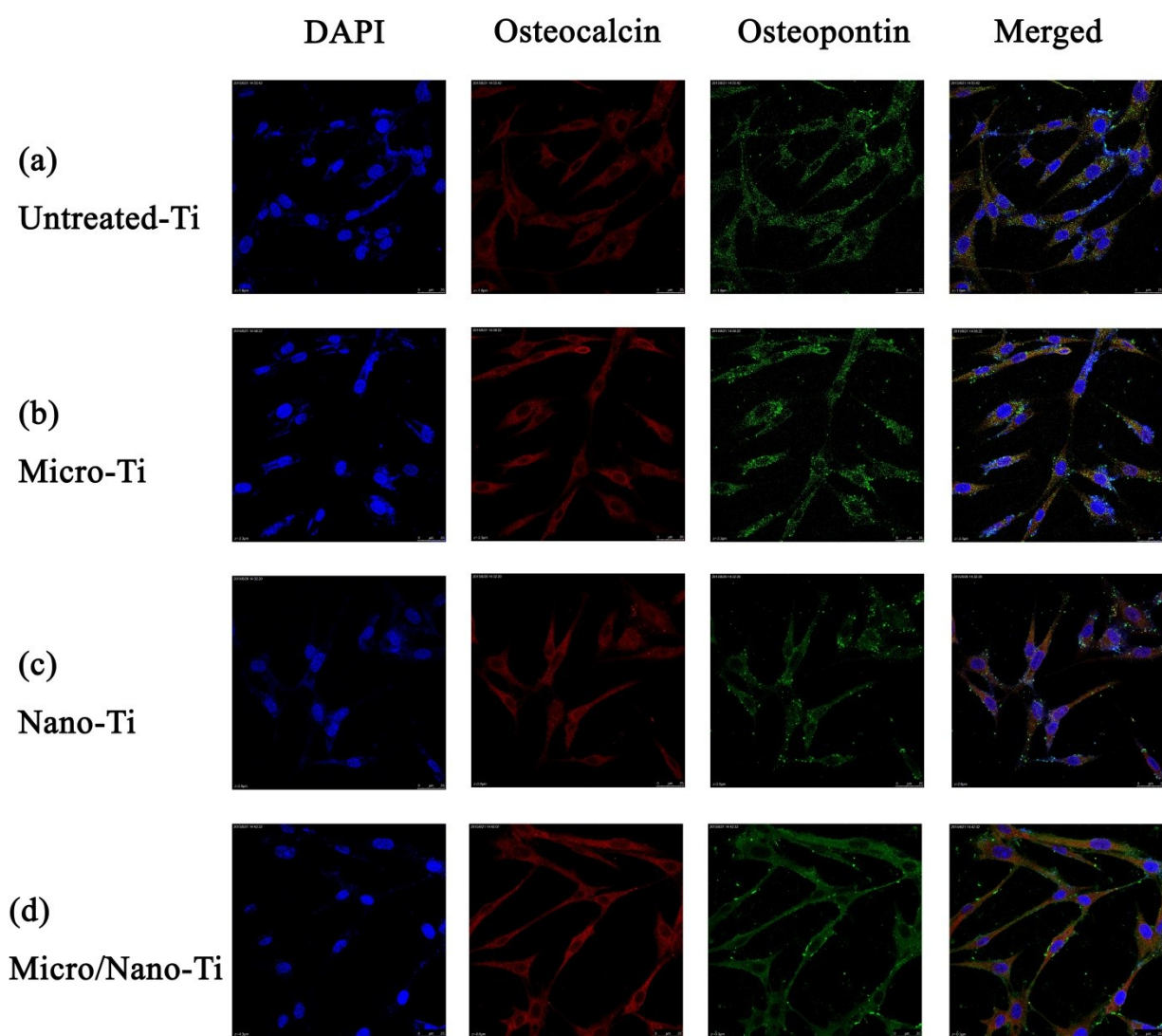
Supplementary_Fig._S2



Supplementary_Fig._S3



Supplementary_Fig._S4



Supplementary_Fig._S5